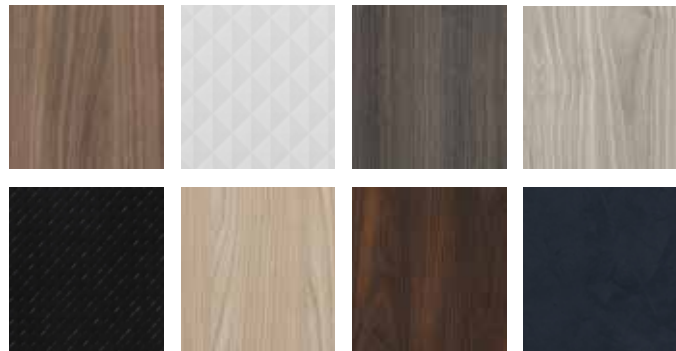




NATURE+

by CLEAF

Thermo-Structured Surface



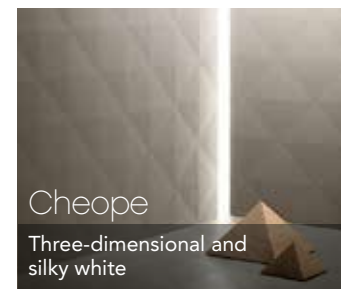
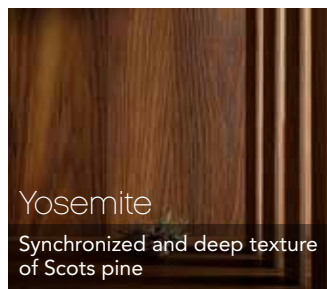
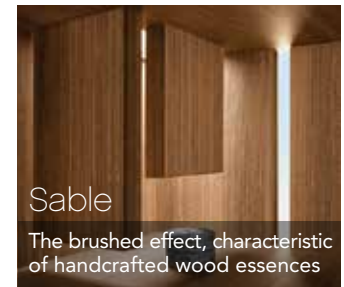
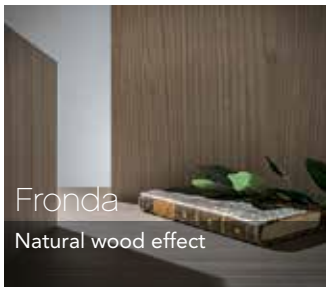
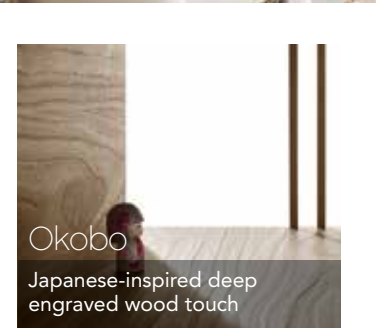

Richelieu

With the Italian know-how of Cleaf, the Nature+ collection creates and enhances your decor with style using natural wood grains and distinguished abstracts.

A Thermo-Structured Surface is a decorative panel pressed at high pressure with a layer of kraft paper between the board and the decorative surface. This provides increased texture depth without affecting the structure nor the stability of the panel, improved scratch and abrasion resistance.



Textures





MATRIX
LM08

Collection

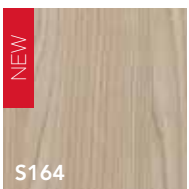
Remarkable tones and textures offering a complete variety of fashionable designs. Ideal for all types of projects: residential, commercial, hospitality, restaurants, bars and more!

Wood Grains

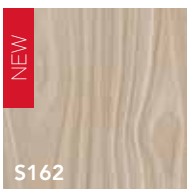
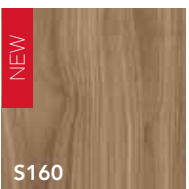
Matrix



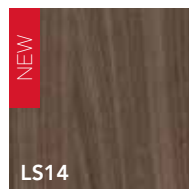
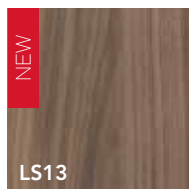
Fronda



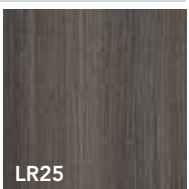
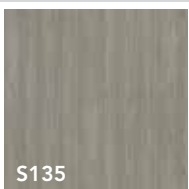
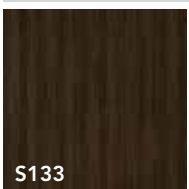
Okobo



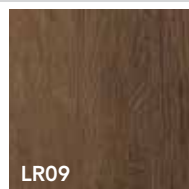
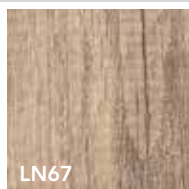
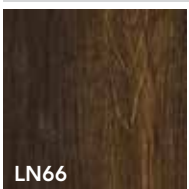
Poro Noce



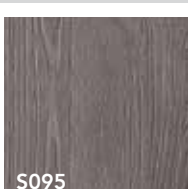
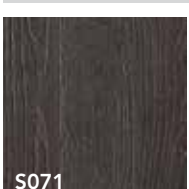
Sable



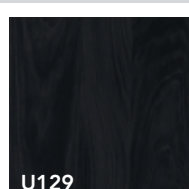
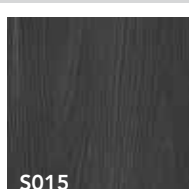
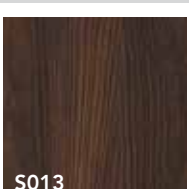
Sherwood



Sherwood

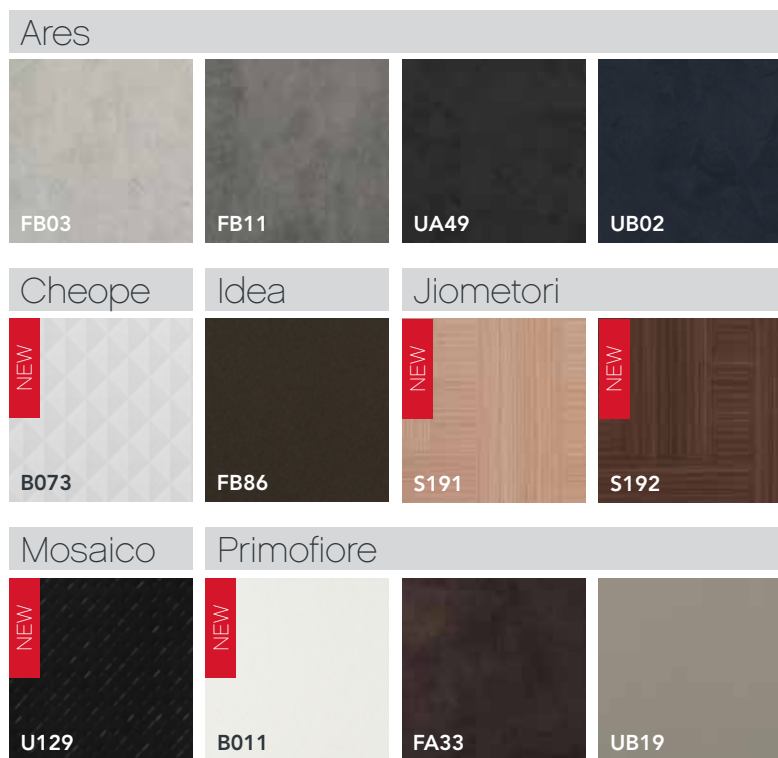


Yosemite



Collection

Abstracts



APPLICATIONS

Nature+ Thermo-Structured Surfaces offer exclusive patterns that create sophisticated and elegant environments. Ideal for commercial and residential applications:

- Kitchen doors and cabinets
- Counters
- Furniture
- Closets
- Bookcases
- Trade show booths
- Wall coverings
- Offices
- And much more

ADVANTAGES

- High quality and highly durable
- Superior scratch and abrasion resistance
- Resistant to fading in the sun – color does not change over time
- No surface treatment required
- Made in Italy using modern technologies
- Replicates both the look and feel of deep textures
- Consistent designs and patterns from panel to panel

SHERWOOD
S071

Complementary Products

Edgebanding



Panels



Laminates



The texture and finish of the laminate sheets may differ slightly from the laminated panels.

Make sure to request your sample.

Check for product availability with your Richelieu distributor or at www.richelieu.com

Our cut-to-size panels and components are manufactured to your specifications. They can be edgebanded on all sides with 1 mm ABS matching edgeband or have unfinished designated edges. These components are ideal for use as end panels, island panels, fillers and accessory parts.

Thickness	Minimum Height	Minimum Width	Maximum Height	Maximum Width	Maximum (for warranty)
3/4" (19 mm) Horizontal grain	5" (127 mm)	5" (127 mm)	70" (1.178 mm)	108" (2.743 mm)	50" (1.270 mm)
3/4" (19 mm) Vertical grain	5" (127 mm)	5" (127 mm)	108" (2.743 mm)	70" (1.178 mm)	50" (1.270 mm)

Door Style Options

This product line offers custom-made cabinet doors and panels with a thermo-structured surface that replicates both the look and feel of natural decorative finishes.

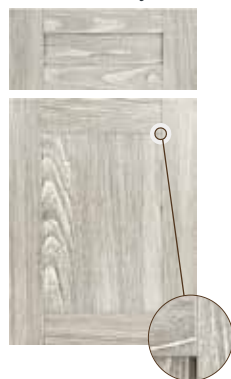
SLAB
Riviera



3-PIECE
Sienna
Euro Assembly



5-PIECE
Bellagio
Euro Assembly



Euro Assembly means that all components are edgebanded prior to assembly.

DRAWER
Bellagio



Frame door



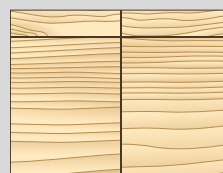
MULTIPLE PANELS
Bellagio



MULTIPLE PANELS
Bellagio



TYPES OF SEQUENCING FOR RIVIERA ONE-PIECE DOORS



Non-sequenced method

Doors will be fabricated at random, and each one will display its own characteristics (graining, shade, etc.). This method is the standard method of production in the industry.



Sequenced method *

The production of doors takes into account the exact position of each door relative to the next; each door becomes a visual extension of the adjacent doors. This method results in a harmonious look for the entire project.

- * Sequenced method cannot exceed size of one cabinet. Each cabinet needs to be sequenced individually.
- * Available only for the Riviera (slab) model.
- * A surcharge for this method is applied. Please use our Web program to order. Production plan required.

JPULL SLAB

Panels and custom-made cabinet doors

J handles (JPULL/J Profile) are integrated horizontally, at the bottom and the top of the 40" panels, and at the top of the 16" panels.

- Panels can be sold as is for door manufacturing, or you can take advantage of our custom-cutting service.
- JPULL is covered with edgebanding.
- Sequenced method* is available only with consecutive/side-by-side doors and drawers.



Contact the Doors Department

Canada Tel.: 1 866 979-5999
US Tel.: 1 877 556-5150

Visit our website and use our step-by-step quick and sample web module under the **Cabinet Doors Section**.



OKOBO
S162

Technical Data

MAINTENANCE

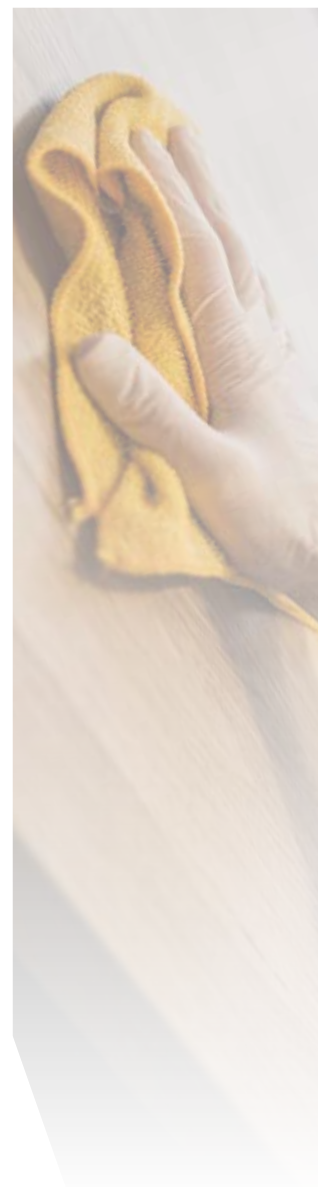
The melamine surfaces are the most resistant among those used in the furniture field. For cleaning, it is preferable to choose a detergent for domestic use. It is recommended that you avoid spraying products directly onto the surface, as this may leave stains and marks; instead, it is preferable to apply the detergent product with a soft damp cloth, clean the surface and then rinse it. Avoid using abrasive products, bleach or highly chlorinated products or acids.

STORAGE

Goods must be stored in a dry and ventilated place (relative air humidity 35%-65%). Do not store with inflammable substances. If exposed to direct sunlight, the laminate may deteriorate. Stacks should be stored correctly, at a manageable height to ensure stability. To avoid warping or damp stains, place the panels on pallets with adequate spacing. When handling the laminates, use suction pads or gloves.

TECHNICAL CHARACTERISTICS OF DECORATIVE SURFACE

Properties	Test method	Requirements met by Cleaf
Resistance to abrasion	EN 14323	Prints: Class 1, Solid colours: Class 3A
Resistance to water steam	EN 14323	> Level 4
Resistance to scratches	EN 14323	> 1.5N
Resistance to stains	EN 14323	Groups 1 and 2, class > 4
Resistance to light (UV)	EN 14323	> 4 grey scale
Resistance to cracks	EN 14323	Class > 3
Resistance to dry heat	EN 12722	Class B
Tendency to retain dirt	UNI 9300	Level > 4
Surface defects	EN 14323	Spots: < 2 mm ² /m ² Length: < 20 mm/m ²
Dimensional tolerances	EN 14323	Thickness: +/- 0.3 mm**
		Length and width : +/- 5 mm
Planarity (both sides melamine faced > 15 mm)	EN 14323	< 2mm/m
Formaldehyde release	ASTM E1333-96	< 0.09 ppm (CARB P2 – EPA TSCA Title VI)





PORO NOCE
LS14

Availability of Nature+ products by color

Code	Finish	PANELS			HPL LAMINATES		EDGE BANDING		CABINET DOORS				
		81.5" x 110.5" 19 mm	51" x 120" 0.8 mm	80" x 108" 0.8 mm	23 mm	43 mm	Slab	3-piece	5-piece	Framed door (Canopy)	JPull 2 sizes		
FB03	Ares	N74FB0362966750	NNTFB0362933543	N/D	WFB03A0123328	WFB03A0143328	•	N/A	N/A	•	•		
FB11	Ares	N74FB1162966750	NNTFB1162933543	N/D	WFB11A0123328	WFB11A0143328	•	N/A	N/A	•	•		
UA49	Ares	N74UA4962966750	NNTUA4962933543	N/D	WUA49A0123328	WUA49A0143328	•	N/A	N/A	•	N/A		
UB02	Ares	N74UB0262966750	NNTUB0262933543	N/D	WUB02A0123328	WUB02A0143328	•	N/A	N/A	N/A	N/A		
B073*	Cheope	N74B07364266750	N/D	NNTB07364233563	WB073A0123328	WB073A0143328	•	N/A	N/A	•	N/A		
S164	Fronda	N74S16464466750	N/D	NNTS16464433563	WS164A0123328	WS164A0143328	•	N/A	•	•	N/A		
FB86	Idea	N74FB8663666750	NNTFB8663633543	N/D	WFB86A0123328	WFB86A0143328	•	•	•	•	N/A		
S191*	Jiometori	N74S19164066750	N/D	N/D	WS191A0123328	WS191A0143328	•	N/A	N/A	•	N/A		
S192*	Jiometori	N74S19264066750	N/D	N/D	WS192A0123328	WS192A0143328	•	N/A	N/A	•	N/A		
B011	Matrix	N74B01162266750	NNTB01162433543	N/D	WB011A0123328	WB011A0143328	•	•	•	•	N/A		
LK84	Matrix	N74LK8462266750	NNTLK8462433543	N/D	WLK84A0123328	WLK84A0143328	•	•	•	•	N/A		
LM08	Matrix	N74LM0862266750	NNTLM0862433543	N/D	WLM08A0123328	WLM08A0143328	•	•	•	•	N/A		
LM67	Matrix	N74LM6762266750	NNTLM6762433543	N/D	WLM67A0123328	WLM67A0143328	•	•	•	•	N/A		
LM69	Matrix	N74LM6962266750	NNTLM6962433543	N/D	WLM69A0123328	WLM69A0143328	•	•	•	•	N/A		
LN27	Matrix	N74LN2762266750	NNTLN2762233543	N/D	WLN27A0123328	WLN27A0143328	•	•	•	•	N/A		
LN30	Matrix	N74LN3062266750	NNTLN3062233543	N/D	WLN30A0123328	WLN30A0143328	•	•	•	•	N/A		
U129*	Mosaico	N74U12964166750	N/D	NNTU12964133563	WU129A0123328M0	WU129A0143328M0	•	N/A	N/A	•	N/A		
S159	Okobo	N74S15964366750	N/D	NNTS15964333563	WS159A0123328	WS159A0143328	•	N/A	•	•	N/A		
S160	Okobo	N74S16064366750	N/D	NNTS16064333563	WS160A0123328	WS160A0143328	•	N/A	•	•	N/A		
S161	Okobo	N74S16164366750	N/D	NNTS16164333563	WS161A0123328	WS161A0143328	•	N/A	•	•	N/A		
S162	Okobo	N74S16264366750	N/D	NNTS16264333563	WS162A0123328	WS162A0143328	•	N/A	•	•	N/A		
LS13	Poro noce	N74LS1364566750	NNTLS1364533543	N/D	WLS13A0123328	WLS13A0143328	•	N/A	•	•	N/A		
LS14	Poro noce	N74LS1464566750	NNTLS1464533543	N/D	WLS14A0123328	WLS14A0143328	•	N/A	•	•	N/A		
B011	Primofiore	N74B01163566750	NNTB01163533543	N/D	WB011A0123328PF	WB011A0143328PF	•	N/A	N/A	•	N/A		
FA33	Primofiore	N74FA3363566750	NNTFA3363533543	N/D	WFA33A0123328	WFA33A0143328	•	•	•	•	N/A		
UB19	Primofiore	N74UB1963566750	NNTUB1963533543	N/D	WUB19A0123328	WUB19A0143328	•	•	•	•	N/A		
LR25	Sable	N74LR256366750	NNTLR256333543	N/D	WLR25A0123328	WLR25A0143328	•	•	•	•	N/A		
S133	Sable	N74S1336366750	NNTS1336333543	N/D	WS133A0123328	WS133A0143328	•	•	•	•	•		
S135	Sable	N74S1356366750	NNTS1356333543	N/D	WS135A0123328	WS135A0143328	•	•	•	•	•		
S138	Sable	N74S1386366750	NNTS1386333543	N/D	WS138A0123328	WS138A0143328	•	•	•	•	•		
LN66*	Sherwood	N74LN6663166750	NNTLN6662533543	N/D	WLN66A0123328	WLN66A0143328	•	•	•	•	N/A		
LN67*	Sherwood	N74LN6763166750	NNTLN6762533543	N/D	WLN67A0123328	WLN67A0143328	•	•	•	•	N/A		
LR09*	Sherwood	N74LR0963166750	NNTLR0962533543	N/D	WLR09A0123328	WLR09A0143328	•	•	•	•	N/A		
S071*	Sherwood	N74S07162566750	NNTS07162533543	N/D	WS071A0123328	WS071A0143328	•	•	•	•	N/A		
S095*	Sherwood	N74S09563166750	NNTS09562533543	N/D	WS095A0123328	WS095A0143328	•	•	•	•	N/A		
U129	Yosemite	N74U12962866750	NNTU12962333543	N/D	WU129A0123328	WU129A0143328	•	•	•	•	N/A		
S011	Yosemite	N74S01162866750	NNTS01162333543	N/D	WS011A0123328	WS011A0143328	•	•	•	•	N/A		
S012	Yosemite	N74S01262866750	NNTS01262333543	N/D	WS012A0123328	WS012A0143328	•	•	•	•	N/A		
S013	Yosemite	N74S01362866750	NNTS01362333543	N/D	WS013A0123328	WS013A0143328	•	•	•	•	N/A		
S015	Yosemite	N74S01562866750	NNTS01562333543	N/D	WS015A0123328	WS015A0143328	•	•	•	•	N/A		

NEW!

*Texture on 1 side only.



Serving you across North America

CANADA

Tel.: 1 844 433-3354
Fax: 1 844 433-3329

UNITED STATES

Tel.: 1 844 433-3354
Fax: 1 844 433-3329



Follow us on

