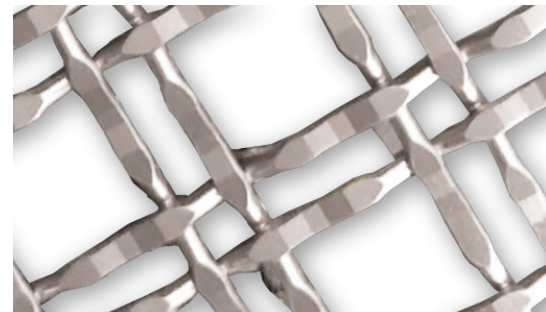




# Decorative Wire Mesh



*Versatile, elegant and timeless*

As an extremely versatile material, decorative wire mesh is ever-growing in popularity in various residential, commercial and architectural applications. From kitchen cabinets to space dividers, from hotel to restaurant decor, wire mesh's multifaceted nature establishes it as a favored material for any project: functional, aesthetic, creative or commercial.

- Available in multiple finishes and styles to get the perfect match for any project
- Every design of decorative wire mesh is woven, ensuring a strong and everlasting product
- Made from 80% post-consumer recycled content, that can contribute to LEED credits





140  
Chrome



195  
Brushed Nickel



BORB  
Brushed Oil-Rubbed Bronze



142  
Pewter



900  
Matte Black



M41  
Antique Copper



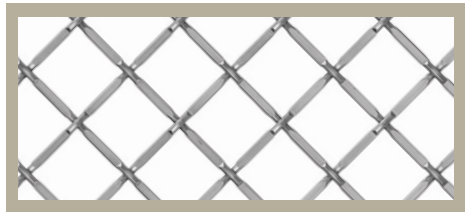
160  
Satin Brass



BB  
Burnished Brass

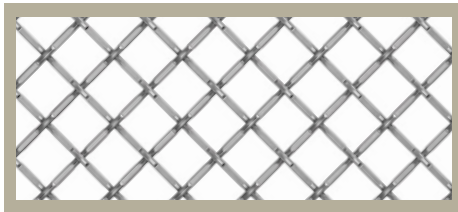
No.	Description
WIRESMESH3	Decorative wire mesh sample box

Samples are available for each wire mesh model. To order, simply add an S at the end of each product number.



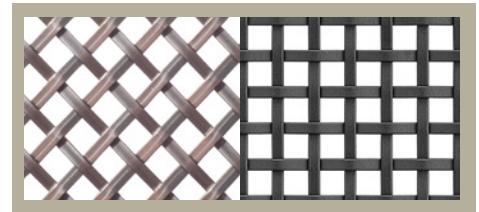
POA: High

No.	FINISH CODE	OVERALL DIMENSIONS (W x L)
881220	142, BB	36" x 48" (0.9 m x 1.2 m)
833234	195, BORB	36" x 48" (0.9 m x 1.2 m)
833246	142, 195, BORB	48" x 72" (1.2 m x 1.8 m)
88122048	BB	48" x 72" (1.2 m x 1.8 m)



POA: High

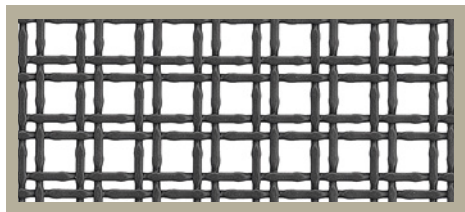
No.	FINISH CODE	OVERALL DIMENSIONS (W x L)
881214	140, 142, BB, M41	36" x 48" (0.9 m x 1.2 m)
8121434	195	36" x 48" (0.9 m x 1.2 m)
8121446	195, BORB	48" x 72" (1.2 m x 1.8 m)



POA: Medium

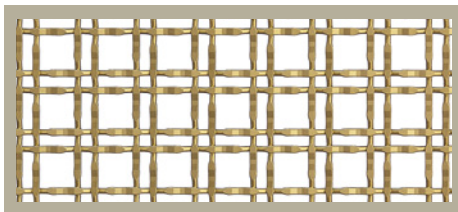
No.	FINISH CODE	OVERALL DIMENSIONS (W x L)
88286*	142, BB	36" x 48" (0.9 m x 1.2 m)
WMB504072	900	40" x 72" (1 m x 1.8 m)

\*88286 has a diamond orientation



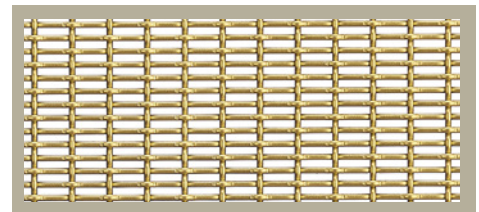
POA: Medium

No.	FINISH CODE	OVERALL DIMENSIONS (W x L)
WMB22184072	900	40" x 72" (1 m x 1.8 m)



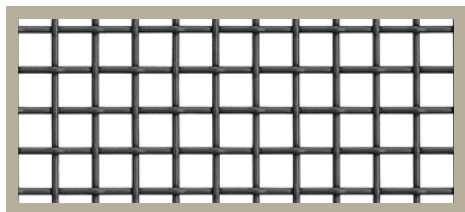
POA: Medium

No.	FINISH CODE	OVERALL DIMENSIONS (W x L)
WMB22224072	160	40" x 72" (1 m x 1.8 m)



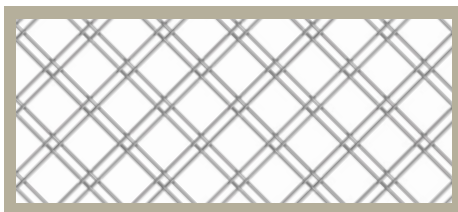
POA: Medium

No.	FINISH CODE	OVERALL DIMENSIONS (W x L)
WMB714072	160	40" x 72" (1 m x 1.8 m)



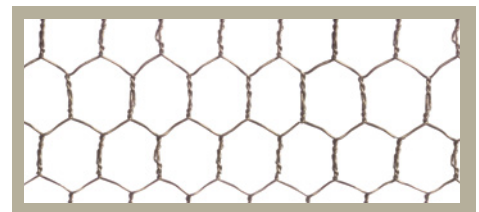
POA: High

No.	FINISH CODE	OVERALL DIMENSIONS (W x L)
WMB4414072	160, 900	40" x 72" (1 m x 1.8 m)



POA: High

No.	FINISH CODE	OVERALL DIMENSIONS (W x L)
88114	140	24" x 72" (0.6 m x 1.8 m)
88114	BB	36" x 48" (0.9 m x 1.2 m)



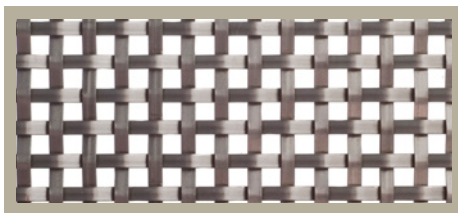
POA: High

No.	FINISH CODE	OVERALL DIMENSIONS (W x L)
88332	BB	36" x 48" (0.9 m x 1.2 m)



POA: High

No.	FINISH CODE	OVERALL DIMENSIONS (W x L)
88316	140, BB	36" x 48" (0.9 m x 1.2 m)

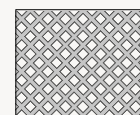


POA: Low

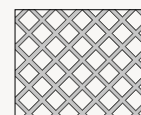
No.	FINISH CODE	OVERALL DIMENSIONS (W x L)
880025	142	36" x 48" (0.9 m x 1.2 m)

### PERCENT OPEN AREA (POA)

Defines the level of TRANSPARENCY, based on the ratio of open area to total screen area in a mesh product, expressed as a percentage.



Low  
(0-33%)



Medium  
(34-66%)



High  
(67-100%)

