

- 1** SCREWS AND FASTENERS
- 2** FURNITURE EQUIPMENT
- 3** HINGES
- 4** SLIDES
- 5** CASTERS AND LEGS
- 6** KITCHEN SOLUTIONS
- 7** CLOSET SOLUTIONS
- 8** LIGHTING SOLUTIONS
- 9** SINKS AND FAUCETS
- 10** OFFICE
- 11** SLIDING DOORS
- 12** GLASS HARDWARE
- 13** PANELS AND SURFACES
- 14** EDGE-BANDING
- 15** CABINET DOORS AND DRAWERS
- 16** CORBELS AND FLOOR REGISTERS
- 17** GLUES, SILICONES, CAULK AND INSULATING
- 18** TOOLS AND SECURITY
- 19** FINISHING PRODUCTS AND SHOP SUPPLIES
- 20** COMMERCIAL DISPLAY HARDWARE
- 21** MOLDING, RAILING AND BATHROOM HARDWARE

## STICKMAN SLIMLINE EDGE AND LONG-LASTING CORNER PROTECTION

Aluminum profiles for any joinery project.

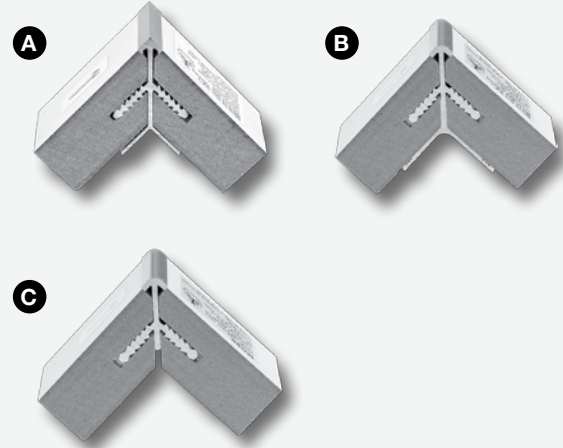
Stickman aluminum profiles have been engineered to increase strength and protection to edges.

Glue traps are incorporated to create a strong bond and hide any overflow. Do not require any screw fixings.

### CORNER PROTECTION MOLDINGS

- Material: Anodized aluminum
- Length: 8 linear foot (2.44 m)

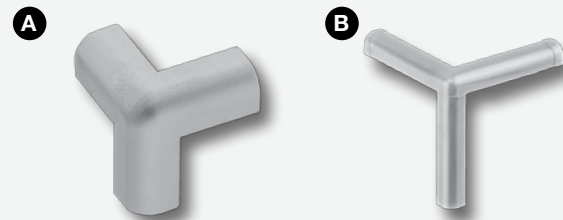
REF.	PRODUCT	FINISH	DESCRIPTION	THICKNESS	QTY/BOX
A	25MCS190810	Satin Aluminum	Mitre corner with square profile.	3/4" (19 mm)	6
	25MCS900810			5/8" to 3/4" (16 to 19 mm)	
B	25MC130810	Satin Aluminum	Mitre corner with round profile.	1/2" (13 mm)	
	25MC160810			5/8" (16 mm)	
	25MC190810			3/4" (19 mm)	
C	25MC900810	Satin Aluminum	Mitre corner with round profile.	5/8" to 3/4" (16 to 19 mm)	



### CORNERS FOR EDGE MOLDINGS

- Material: Plastic
- Injection molded corners
- Eliminates the need to mitre three way corners

REF.	PRODUCT	FINISH	SIZE	QTY/BOX
A	25MC3S10	Satin Aluminum	9/16" (15 mm)	120
B	25MC3	Light Gray	1 1/2" (38 mm)	40

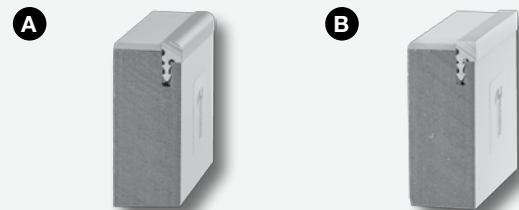


### EDGE PROTECTION MOLDINGS

For 1/2" (12 mm) to 3/4" (19 mm) panels.

- Material: Anodized aluminum
- Length: 8 linear foot (2.44 m)

REF.	PRODUCT	FINISH	DESCRIPTION	QTY/BOX
A	25MCED0810	Satin Aluminum	Round edge	20
B	25MCSED0810		Square edge	



### PANEL JOINING MOLDING

Used to join 5/8" (16 mm) and 3/4" (19 mm) panels.

- Material: Anodized aluminum
- Length: 8 linear foot (2.44 m)

PRODUCT	FINISH	THICKNESS	QTY/BOX
25MCBUT0810	Satin Aluminum	5/8" to 3/4" (16 to 19 mm)	6



### STICKMAN PNEUMATIC PUNCH GUN

A punch can be used to hold the Stickman profiles as the glue sets. It would avoid using masking tape and the time needed to remove and possibly clean where the tape has been.

PRODUCT	QTY/BOX
25MCPP	1

#### Specifications:

- Max. working pressure: 52 ~ 100psi (3.5 ~ 6.9 bar)
- Shank ø: 13/64" (5 mm) with top end big 5/64" (2 mm)
- Air inlet: 1/4" NPT
- Net weight: 1.5 lb (0.7 kg)



### MITRE CORNER CUTTER

Used for Stickman corner moldings 25MC, 25MCS, 25MC90 and 25MCS90.

- Feed rate: 15-18 rpm
- Spindle rate: 10.000 rpm max.

Sold by unit

PRODUCT	CUTTING Ø	SHANK Ø	QTY/BOX
25MCC	2 7/16" (62 mm)	1/2" (13 mm)	20



### CUTTER FOR MCED AND MCSED PROFILE

- Feed rate: 50 rpm
- Spindle rate: 15000 rpm max.

Sold by unit

PRODUCT	QTY/BOX
25MCEDCUT	20

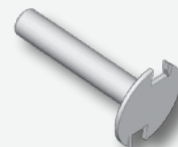


### HEAVY-DUTY SLOTTING CUTTER

Used in conjunction with MCV for volume machining.

Sold by unit

PRODUCT	CUTTING Ø	QTY/BOX
25MCHDC	51 mm	20



### V CUTTER FOR CNC

For volume machining on CNC. Use in conjunction with 25MCHDC to cut groove for Stickman's arms.

Sold by unit

PRODUCT	CUTTING Ø	SHANK Ø	QTY/BOX
25MVCNC	57 mm	1/2" (13 mm)	20



### DOOR GLASS RETAINER MOLDING

Door glass retainer molding to be designed for the Nature Plus and Synchron door collections.

It is inserted in the frame of the door and retains the glass at the back of the door.

PRODUCT	QTY/BOX
20038100	1

