

FULLY GROUND TAPER POINT DRILL

- High speed steel (HSS) M2 DIN 338 fully ground taper point drill
- Replacement drill bit for the countersink with taper point drill

Application: Excellent for drilling, natural woods, MDF, chipboard, plywood, aluminum/non-ferrous, aluminum composite material (acm), composites, and composite decking materials

PRODUCT	SHANK Ø	BIT LENGTH	FOR SCREW	CUTTING Ø	QTY/BOX
AT630260	5/64"	2 1/8"	#4	3/8" (9 mm)	1
AT630262	3/32"	2 1/4"	#6		
AT630264	7/64"	2 11/16"	#8		
AT630266	1/8"	2 3/4"	#10		
AT630268	9/64"	2 15/16"	#12	1/2" (13 mm)	

Suggested product(s):

PRODUCT	DESCRIPTION
AT55620	Hex shank countersink with taper point drill for wood screws



HEX SHANK COUNTERSINK WITH TAPER POINT DRILL FOR WOOD SCREWS

The 2-flute integral design ensures uniform concentric results each and every time. Drill pilot hole and tapered countersink for wood screws.

Replacement drill bits:

AT55620: AT630260

AT55622: AT630262

AT55624: AT630264

AT55626: AT630266

AT55628: AT630268

Application: Excellent for drilling, natural woods, MDF, chipboard, plywood, aluminum/non-ferrous, aluminum composite material (acm), composites, and composite decking materials

PRODUCT	SHANK Ø	DRILL BIT SIZE	FOR SCREW	CUTTING Ø	QTY/BOX
AT55620	1/4" (6 mm)	5/64"	#4	3/8" (10 mm)	1
AT55622		3/32"	#6		
AT55624		7/64"	#8		
AT55626		1/8"	#10		
AT55628		9/64"	#12	1/2" (13 mm)	

New!

Suggested product(s):

PRODUCT	DESCRIPTION
AT630262	Fully ground taper point drill



REPLACEMENT BIT FOR SELF-CENTERING DRILL BIT GUIDES

PRODUCT	DRILLING Ø	FOR SCREW	QTY/BOX
AT630520	5/64"	#6	1
AT630522	7/64"	#8	
AT630524	9/64"	#10	
AT630528	5 mm	#14	

Suggested product(s):

PRODUCT	DESCRIPTION
AT608520	Self-centering drill bit guides



LAMINATE TRIMMER WITH EURO SQUARE BEARING ROUTER BITS

Industrial quality carbide tipped laminate trim bit with the Euro™ Square Bearings. The bits are designed according to specifications with a slight taper allowing for adjustment up or down on the work edge to finish off the edge with a smooth and burr free cut. The square bearing is manufactured with a non-stick Teflon® which won't mark your edge so it can be easily wiped clean.

Needed replacement bearing:

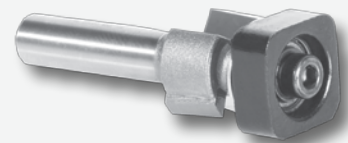
BITETHB (replacement bearing) for # BITETH

BITETTB (replacement bearing) for # BITETT and BITETT12

- Glue won't stick to bearing
- Beveled cutter means little or no hand filing
- Will not scratch high gloss laminates
- Beveled cutter can be resharpened

PRODUCT	LENGTH	SHANK Ø	CUT Ø	QTY/BOX
BITETH	1 3/4" (44 mm)	1/4"	1/2"	1
BITETH3			3/4"	3
BITETT	2 3/8" (60 mm)	1/2"	3/4"	1
BITETT12	2 5/8" (67 mm)		1"	1

New!



HIGH PRECISION STEEL ROUTER COLLET REDUCERS

This industrial high precision machined collet reduction sleeve enables collet sizes to be reduced to accept CNC and router bits with smaller shank sizes. Reduction sleeves are produced with high quality steel and precisely machined to limit the chance of run-out.

PRODUCT	INSIDE Ø	OUTSIDE Ø	LENGTH	QTY/BOX
ATRB102	1/8"	1/4"	1" (25 mm)	1
ATRB116	1/4"	1/2"		
ATRB122	3/8"		1 3/16" (30 mm)	



SOLID CARBIDE COMPRESSION SPIRAL CNC ROUTER BITS

Special unique carbide for longer lifetime in abrasive material. Designed for CNC applications requiring high feed rates and a clean finish.

Application: Particularly suitable for double-sided melamine or laminated material, MDF/HDF, Oriented Strand Board (OSB), softwood/hardwood, veneered plywood

PRODUCT	SHANK Ø	CUT Ø	LENGTH	QTY/BOX
AT46170	1/4"	1/4"	2 1/2" (64 mm)	1
AT46172	3/8"	3/8"	3" (76 mm)	
AT46180	1/8"	1/8"	2 1/2" (64 mm)	
AT46188	1/2"	1/2"	3" (76 mm)	



SOLID CARBIDE BALL NOSE SPIRAL UP-CUT ROUTER BITS

Used for carving decorative doors and sign manufacturing. Up-Cut design leaves an excellent finish and expels chips quickly.

Application: Excellent for cutting softwood/hardwood, aluminum, MDF, splastic, sign foam

PRODUCT	SHANK Ø	CUT Ø	LENGTH	QTY/BOX
AT46376	1/4" (6 mm)	1/4"	2 1/2" (64 mm)	1
AT46380	1/2" (13 mm)	1/2"	3" (76 mm)	
AT46384			4" (102 mm)	



SOLID CARBIDE UP-CUT SPIRAL CARVING TAPERED BALL NOSE CNC ROUTER BITS

This router bit is made with an extra-long reduced shank section for deeper reach and better chip clearance. Incorporates high shear, multi-flute and ZrN coating designed for the ultimate combination of finish and tool longevity. The simultaneous 3 axis motion with the appropriate software allows full 3D capability that provides sign and 3D model makers the ability to work with any material.

Benefits of Zirconium Nitride (ZrN) Coating:

- Provides high resistance to wear
- Sharper cutting edges
- Extended tool life
- Less friction and heat buildup
- Run/spin much faster than an uncoated tool
- High flute volume supports high feed rates and chip loads
- High aspect ratio for single pass deep-reach cutting

Application: Specially designed for 2D and 3D CNC profiling and carving of plastic aluminum, foam thermoplastics, softwood/hardwood and phenolic composites



PRODUCT	SHANK Ø	CUT Ø	LENGTH	ANGLE	QTY/BOX
AT46280	1/4"	1/32"	3" (76 mm)	6.2°	1
AT46282		1/16"		5.4°	
AT46284	1/4"	1/8"	3" (76 mm)	1°	
AT46286				3.6°	
AT46294	1/4"	1/4"	3" (76 mm)	10°	
AT46490			4" (102 mm)	10°	

HIGH MIRROR-FINISH SOLID CARBIDE UP-CUT SPIRAL BALL NOSE ROUTER BITS

High mirror-finish solid carbide up-cut spiral ball nose router bit is designed to eliminate tool marks that commonly appear when used with plastic and solid surface materials. Due to the highly polished finish and unique tool geometry the spiral ball nose router bit delivers superior surface finish of at least 28 RA (roughness average) in various materials.

Constructed of special grade solid carbide the spiral ball nose router bits last longer than traditional router bits and deliver superior cutting performance with plastics. The bits are ideal for use in a variety of applications spanning the mechanical, medical and woodworking industries.

Application: Excellent for cutting plastic, acrylic, acrylic stone, aluminum, Corian, high impact polystyrene (HIPS), low density polyethylene (LDPE), non-ferrous materials, plexiglas, polyethylene and much more



PRODUCT	SHANK Ø	CUT Ø	LENGTH	QTY/BOX
AT46424	1/4"	3/16"	2 1/2" (64 mm)	1
AT46426		1/4"		

EXTENSION ADAPTER FOR CNC

1/2" shank CNC extension adapter for 1/4" shank router bits.

- Total Indicated Run-out (TIR) is 0.00118" (0.03 mm)
- Max RPM = 18 000



PRODUCT	SHANK Ø	Ø	LENGTH	QTY/BOX
AT47640	1/2"	3/4"	3 7/16" (87 mm)	1

SOLID CARBIDE SPIRAL 'O' FLUTE CNC ROUTER BITS FOR PLASTIC

Produce super clean smooth cuts especially in acrylic materials (Plexiglas® Lucite®) other plastics and wood. Bits are made according to strict tolerances from an exclusive carbide grade and polished to a mirror finish. Designed to eject chips up. Ideal for industrial applications and CNC machines. Right hand helix right hand cut.

Application: Excellent for cutting plastic/acrylic, acetal and nylon, acrylic stone, acrylonitrile butadiene styrene (ABS), aluminum composite material (ACM), Alupanel®, Corian, laminate, wood, and more

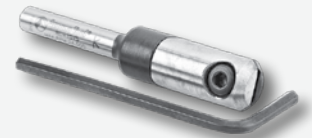


PRODUCT	SHANK Ø	CUT Ø	LENGTH	QTY/BOX
AT51404	1/4"	1/4"	2" (51 mm)	1
AT51411		1/8"		
AT51417		3/16"		
AT51410	1/8"	1/8"		

CNC IN-GROOVE INSERT ENGRAVING TOOL BODY

Solid carbide insert carbide knives produce crisp clean cuts and last at least twice as long as comparable solid carbide bits. This industrial engraving tool body was engineered to quickly interchange inserts while the tool body remains mounted in your CNC machine. This minimizes down-time and helps to maintain consistent cutting accuracy. Insert knives (ATRC360) sold separately.

Application: Designed for cutting and engraving laminated materials, veneers, MDF, plastics, hardwood/softwood, solid surface and more



PRODUCT	SHANK Ø	LENGTH	QTY/BOX
ATRC1075	1/4"	2 1/2" (64 mm)	1

SOLID CARBIDE INSERT V TIP ENGRAVING KNIFE FOR IN-GROOVE SYSTEM

Replacement V tip insert knife for in-groove system (ATRC1075).

Application: Signmaking, grooving, and carving

PRODUCT	CUTTING HEIGHT	TIP WIDTH	QTY/BOX
ATRC360	5/8" (16mm)	0.005"	1

Suggested product(s):

PRODUCT	DESCRIPTION
ATRC1075	CNC In-Groove Insert Engraving Tool Body



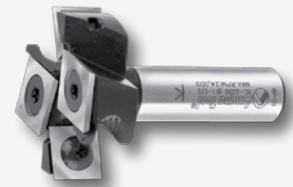
SOLID CARBIDE INSERT SPOILBOARD SURFACING AND RABBETING CNC ROUTER BIT

Mini insert solid carbide spoilboard surfacing & rabbeting with scorer great for cutting tight corners. Features unique 2+2 insert knife design that contains two cutting flutes and two up-shear scorers which provide a smoother finish at the bottom of the cut than traditional two-knife style router bits.

These industrial router bits feature solid carbide insert knives with four cutting edges that allow users to rotate the knife when one side becomes dull providing the highest-quality finish available on woodworking tools.

- 2+2 design
- Great for surface planing.
- 4-sided solid carbide insert knives
- Exclusive carbide grade for highest quality of cut
- Maximum cutting efficiency
- Faster material removal process

Application: Perfect for MDF, fiberboard, HDF/LDF, Balsa Core, hardwood/softwood, chipboard and plastic



PRODUCT	SHANK Ø	CUT Ø	LENGTH	QTY/BOX
ATRC2250	1/2"	1 1/2"	2 5/16" (59 mm)	1

V-GROOVE, MITER FOLD AND SIGNMAKING CNC ROUTER BITS

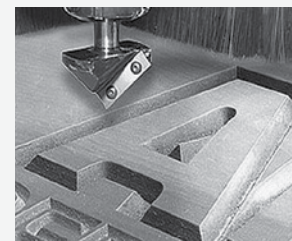
These industrial V-Groove insert router bits were especially designed for applications including:

- Miter Folds (create the perfect joint)
- Signmaking and Lettering

The innovative CNC tool design uses a high grade carbide insert knife which allows you to get two uses out of each insert. Once the insert knife shows signs of wear, you can rotate the insert for a brand new cutting edge. Secure locking screw system ensures maximum safety and maintains cutting accuracy.

- Long lasting insert knives provide superior smooth quality cuts every time
- Quick and precise replacements of dull knives
- Due to insert accuracy tool life is extended
- Insert tooling allows for harder grades of carbide
- Special carbide grades for special applications
- Knives can be re-sharpened multiple times without affecting the original profile
- Cost effective solution compared to replacing brazed router bits

Application: Excellent for cutting aluminum, brass, bronze, copper, gold, silver & carbon fiber, (Engraving Only), composites, foam, laminate, melamine, MDF/HDF, sign board, solid surface, veneered plywood, wood, xanita® board, 20lbs high density urethane



ATRC1045

PRODUCT	SHANK Ø	CUT Ø	LENGTH	ANGLE	QTY/BOX
ATRC1045	1/2"	13/16"	2 3/8"	45°	1
ATRC1102		1 1/2"	3"	90°	
ATRC1108		1 1/16"	2 15/32"	60°	

SOLID CARBIDE SINGLE 'O' FLUTE PLASTIC CUTTING ROUTER BIT

A solid carbide tool with unique circular 'O' flute design to eject chips more easily.

Application: Single flute for fast cutting in soft plastics such as acrylic, plastic, PVC, styrene, ABS, and more

PRODUCT	SHANK Ø	CUT Ø	LENGTH	QTY/BOX
AT43500	1/4"	1/8"	2"	1



SOLID CARBIDE CARVING LINER ROUTER BIT

For extra-fine carving and lettering details.

Application: Excellent for carving aluminum, brass, MDF/Laminates, plywood, silver and wood

PRODUCT	SHANK Ø	CUT Ø	LENGTH	ANGLE	QTY/BOX
AT45783	1/4"	1/4"	2 1/2" (64 mm)	18°	1



V-GROOVE, DOUBLE EDGE FOLDING ROUTER BITS FOR SHAPING ACM PANELS

Designed for shaping Aluminum Composite (sandwich) Materials (ACM) with angle V-grooves with flat bottoms. Routing V-shaped grooves, whereby the aluminum cover and a part of the polyethylene core is removed, allows folding/creasing the remaining material by hand. Ideal for wall panel fabrication.

Application: Designed for cutting and scoring aluminum sandwich materials including acetate, aluminum, brass, bronze, clay, zinc & wood compositepanels, aluminum composite materials (ACM), plastic, wood and more



PRODUCT	SHANK Ø	CUT Ø	LENGTH	ANGLE	QTY/BOX
AT45792	1/4"	1/2"	2" (51 m)	90°	1
AT45795				108°	
AT45798		3/4"	2 1/4" (57 mm)	135°	

SOLID CARBIDE SPIRAL COMPOSITE, FIBERGLASS AND PHENOLIC CUTTING ROUTER BIT

Modern-day materials present challenges to the fabricator using these special multi-flute edge tools featuring ZrN ceramic coating addresses these challenges with a winning geometry combination.

- Creates a harder and tougher cutting edge allows for a prolonged cutting edge life and helps to prevent the build-up of material in the flutes while cutting
- High resistance to wear
- Extended tool life
- Less friction and heat buildup

Application: Excellent for cutting plastic, acrylic stone, aluminum, acrylonitrile-butadiene-styrene (ABS), composite, Corian, fiberglass and much more



PRODUCT	SHANK Ø	CUT Ø	LENGTH	QTY/BOX
AT46094	1/4"	1/4"	2 1/2" (64 mm)	1

SOLID CARBIDE FOAM CUTTING SQUARE END SPIRAL ROUTER BITS

Ensure your foam projects are milled with unparalleled accuracy detail and clarity. Achieve both precision and depth for foam carving and milling applications. Provides deeper cuts and larger slices with fewer passes in thick materials resulting in improved productivity and less assembly. The up-cut spiral ejects chips away from the workpiece.

Application: Specifically designed for cutting and milling Polyurethane foam, Polyethylene foam, Extruded Polystyrene foam (XPS), Expanded Polystyrene (EPS) and Neopor®



PRODUCT	SHANK Ø	CUT Ø	LENGTH	QTY/BOX
AT46270	1/4"	1/8"	2 1/2" (64 mm)	1
AT46272		1/4"	4" (102 mm)	

SOLID CARBIDE SPIRAL HONEYCOMB HOGGER CNC ROUTER BITS

Designed to cut a large variety of honeycomb materials hogger geometry is excellent for shredding and chip evacuation while maintaining a smooth surface.

- Creates a harder and tougher cutting edge allows for a prolonged cutting edge life and helps to prevent the build-up of material in the flutes while cutting
- High resistance to wear
- Extended tool life
- Less friction and heat build

Application: Excellent for cutting honeycomb cardboard, composite materials, acrylonitrile-butadiene-styrene (ABS), Lexan™



PRODUCT	SHANK Ø	CUT Ø	LENGTH	QTY/BOX
AT46306	1/4"	1/4"	4" (102 mm)	1

SOLID CARBIDE SPIRAL HONEYCOMB CUTTING ROUTER BITS

Solid carbide honeycomb cutting router bits provide a burr-free top and bottom finish providing that the workpiece is thicker than 0.250".

- Creates a harder and tougher cutting edge allows for a prolonged cutting edge life and helps to prevent the build-up of material in the flutes while cutting
- High resistance to wear
- Extended tool life
- Less friction and heat buildup

Application: Designed for cutting Bioboard™ Falconboard® Aluminum Honeycomb (AHP) carbon fiber and honeycomb cardboard



PRODUCT	SHANK Ø	CUT Ø	LENGTH	QTY/BOX
AT46308	3/8"	3/8"	3" (76 mm)	1



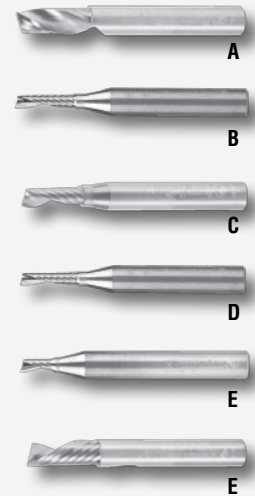
SOLID CARBIDE ALUMINUM SPIRAL 'O' FLUTE CNC ROUTER BITS

Ideal for industrial applications our spiral 'O' flute router bits are manufactured using innovative techniques and materials that yield superior results with each cut and help make aluminum projects less labor-intensive. An "up-cut" design expels chips away from the workpiece, while a "down-cut" design expels chips away from the router.

- Razor sharp cutting edge
- Effortless chip removal
- Helps prevent chip re-welding
- Superior cutting quality and extended tool life

Application: Designed for a variety CNC machining applications such as aluminum, brass, copper, plastic, solid surface, wood and more

REF.	PRODUCT	SHANK Ø	CUT Ø	CUT DEPTH	LENGTH	FEATURE PRODUCT	QTY/BOX
A	AT51402	1/4"	1/4"	5/8" (16 mm)	2" (51 mm)	Up-cut design	1
B	AT51406	1/8"	1/8"	5/16" (8 mm)	1 1/2" (38 mm)		
C	AT51408	1/4"	3/16"	1/2" (13 mm)	2" (51 mm)		
D	AT51454		1/8"				
E	AT51474		1/8"	1/4" (6 mm)			
F	AT51502		1/4"	5/8" (16 mm)		Down-cut design	



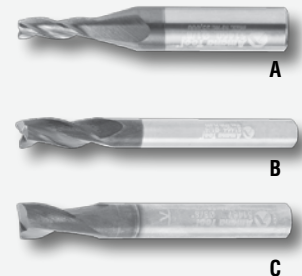
SOLID CARBIDE SPIRAL CNC ROUTER BITS

This router bit is manufactured from an ultra-fine micrograin carbide and feature a 30 degree Center Cutting Mill End with a 45 degree corner chamfer (for extra strength) up cut design and very importantly Aluminum Titanium Nitride (AlTiN) coating for superior cut quality.

- Extra wear resistance
- Faster feed and speed rates
- Cutting edge protected from wear
- Better chip evacuation
- Less heat build up
- Superior cutting quality and extended tool life

Application: Excellent for cutting stainless steel, steel, cast iron, composites, low carbon steel, magnesium, plastics, super alloys, titanium (up to 40HRc Hardness)

REF.	PRODUCT	SHANK Ø	CUT Ø	QTY/BOX
A	AT51460	1/4"	1/8"	1
B	AT51464		1/4"	
C	AT51467	3/8"	3/8"	



TITANIUM-COATED DRILL BIT SET

- Lasts longer and stays sharper due to gold oxide coating
- Precision ground 135° split point self centers on material and drills faster
- Coating provides added protection from heat buildup

Application: For wood, metal, PVC and non-ferrous materials

Included: 14 drill bits: 3/8", 5/16", 1/4", 7/32", 3/16", 5/32", 9/64", 1/8" (x2), 7/64", 3/32", 5/64", 1/16" (x2)

PRODUCT	QTY/BOX
AT616202	1





FLEXIBLE AIR HOSE WITH 1/4 INDUSTRIAL COUPLER AND PLUG

The GLL 30 Self-Leveling Cross-Line Laser projects two lines, making a cross-line projection for a wide array of leveling and alignment applications. This versatility makes it more valuable than a typical line laser. With top-notch accuracy and one-switch operation, leveling and alignment tasks are done quickly and correctly.

- Cross-line mode - projects two very bright lines that are perfectly level
- MM 2 Flexible Mounting Device - clamps to multiple surfaces and provides microfine height adjustment
- Smart Pendulum System - self-levels and indicates out-of-level conditions
- Secure transport - pendulum locks when switched off
- Manual mode - tilt the laser to use the lines at any angle
- Ergonomic, compact and lightweight - easy to use, easy to store
- Features 1/4 In.-20 tripod thread - for use with MM 2 mount, BM 3 magnetic mounting bracket or tripod
- Versatile clamp - stable grip on thin and thick surfaces (from 1/2" to 2-1/4" (13 to 57 mm) thick)
- Manual mode - locks line for use at any angle

Included:

- 1 x MM 2 Flexible Mounting Device
- 2 x AA Batteries

PRODUCT	QTY/BOX
BSGLL30	1

Specifications:

- Laser diode: Class II 635 nm, = 1 mW
- Laser line range: Up to 30' (9.14 m)
- Mount threading: 1/4-20
- Width: 2 3/16" (56 mm)
- Length: 2 13/16" (71 mm)
- Weight: 0.5 lb (0.22 kg)
- Accuracy: $\pm 5/16"$ @ 30'
- Leveling type: Self-leveling (up to 4°)



12V MAX FLEXICLICK 5-IN-1 DRILL/DRIVER SYSTEM

The Bosch 12V Max FlexiClick™ 5-In-1 Drill/Driver System is designed for professionals who want a high-quality tool that redefines their limits to get the tough jobs done.

- FlexiClick 5-in-1 design delivers outstanding versatility in a compact, high-quality drill/driver
- Keyless chuck attachment provides locked-in drilling for difficult materials
- Locking bit holder attachment locks hex bits for high-torque driving
- Right angle attachment designed for tight work spaces
- Offset angle attachment offers precise screwdriving very close to edges
- One-Click interface supplies secure, easy fit with included attachments
- LED light illuminates dark work areas effectively

Included:

- 12V Max drill/driver
- Keyless chuck attachment
- Locking bit holder attachment
- Right angle attachment
- Offset angle attachment
- 2 12V Max Lithium-ion batteries
- 12V Max fast charger
- Carrying bag

PRODUCT	QTY/BOX
BSGSR12V140FCB2	1

Specifications:

- Battery Amp Hour: 2
- Chuck Size: 1/4" Hex
- Height: 7" (178 mm)
- Length: 5 3/16" (132 mm)
- Width: 2" (50.8 mm)
- Weight: 1.4 lbs (0.45 kg)
- Rating: 12V Max
- Torque: 265 lb (120 kg)



FORSTNER BITS

Designed to produce perfectly smooth, flat-bottomed holes. With maximum precision drilling ideal for fine woodworking, the bits are also well suited for off-center or angled hole drilling. High-quality Bosch Forstner bits provide an exceptional finish for even the most meticulous professional.

Use Forstner bits to:

- Drill deeply into stock and stay on a true course
- Drill a hole that is flat on the bottom
- Drill through wood with uneven consistency from knots and other imperfections
- Drill through stock at angles, rather than perpendicular
- Drill a partial hole along the edge of a piece of stock
- Re-drill a hole to give it a bigger diameter

PRODUCT	Ø	QTY/BOX
BSFB004	1/4"	1
BSFB006	3/8"	
BSFB008	1/2"	
BSFB010	5/8"	
BSFB012	3/4"	
BSFB014	7/8"	
BSFB016	1"	
BSFB018	1 1/8"	
BSFB020	1 1/4"	
BSFB022	1 3/8"	
New! BSFB026	1 5/8"	

Suggested product(s):

PRODUCT	DESCRIPTION
AT670160	16-Piece forstner bit set

BOSCH



DYNORBITAL EXTREME 5" ORBITAL SANDER - NON-VACUUM

New motor design has the highest power-to-weight ratio in the industry, with 0.3 hp at 1.8 lbs. Most consistent speed under load in industry, running at 92% of rated tool speed. New rotor design enhances power with less friction.

- Recessed throttle lever eliminate's pressure-point on palm
- Comfort grip - tactile, ambidextrous design
- Lip seal shroud allows excellent visibility of work surface
- Weight-mated sanding pad for reduced vibration and consistent finish
- Integrated swivel cuff for secure vacuum coonection
- Increased port size for better vacuum capture rate

Application: Ideal for the finishing and deburring of metal, wood, composites, stone, marble, fillers, primers, and much more

PRODUCT	PAD	ORBIT DIAMETER	SANDING TYPE	QTY/BOX
914X51	Stick-On	3/16" (5 mm)	General sanding	1
914X51HL	Grip-On			
914X52	Stick-On	3/32" (2 mm)	Ultra-fine sanding	
914X52HL	Grip-On			

Suggested product(s):

PRODUCT	DESCRIPTION
91454325T	5" non-vacuum disc pad hook-face
91454334	5" multi-hole non-vacuum pad

Specifications:

- Backing Pad Ø: 5" (127 mm)
- Spindle thread size: 5/16"-24 Female
- Max. speed: 12,000 rpm
- Exhaust Type: Rear
- Length: 6.9" (176 mm)

DYNABRADE



1
SCREWS
AND
FASTENERS

2
FURNITURE
EQUIPMENT

3
HINGES

4
SLIDES

5
CASTERS
AND LEGS

6
KITCHEN
SOLUTIONS

7
CLOSET
SOLUTIONS

8
LIGHTING
SOLUTIONS

9
SINKS
AND
FAUCETS

10
OFFICE

11
SLIDING
DOORS

12
GLASS
HARDWARE

13
PANELS
AND
SURFACES

14
EDGE-
BANDING

15
CABINET
DOORS
AND
DRAWERS

16
CORBELS
AND FLOOR
REGISTERS

17
GLUES,
SILICONES,
CAULK AND
INSULATING

18
TOOLS
AND
SECURITY

19
FINISHING
PRODUCTS
AND SHOP
SUPPLIES

20
COMMERCIAL
DISPLAY
HARDWARE

21
MOLDING,
RAILING AND
BATHROOM
HARDWARE



5" NON-VACUUM DISC PAD - HOOK-FACE

- Exclusive single-piece hub design reduces pad vibration and ensures smooth performance
- Weight Mated - For reduced vibration and consistent finishes
- High quality backup pad for smooth running and minimal tool vibration
- Short nap pads for use with reattachable discs. Long nap pads for use with non-woven nylon discs

PRODUCT	PAD Ø	QTY/BOX
91454325T	5" (127 mm)	1

Suggested product(s):

PRODUCT	DESCRIPTION
914X51HL	Dynorbital extreme 5" (127 mm) orbital sander
914X52HL	non-vacuum

Specifications:

- Composition: Premium urethane
- Thickness: 3/8" (10 mm)
- Density: Medium
- Spindle thread size: 5/16"-24 Male
- Max. speed: 13,000 rpm



5" MULTI-HOLE NON-VACCUM PAD

- Weight Mated - For reduced vibration and consistent finishes
- Single-Piece Hub - Precise machining reduces pad vibration
- Vacuum Hub - Direct path for dust/debris extraction
- Multi-Hole Pad - Channels dust/debris to center for best capture

PRODUCT	PAD Ø	QTY/BOX
91454334	5" (127 mm)	1

Suggested product(s):

PRODUCT	DESCRIPTION
914X51HL	Dynorbital extreme 5" (127 mm) orbital sander
914X52HL	non-vacuum

Specifications:

- Composition: Premium urethane
- Thickness: 3/8" (10 mm)
- Density: Medium
- Spindle thread size: 5/16"-24 Male
- Max. speed: 13,000 rpm



5" NON-VACUUM DISC PAD - VINYL-FACE

- Exclusive single-piece hub design reduces pad vibration and ensures smooth performance
- Weight Mated - For reduced vibration and consistent finishes
- High quality backup pad for smooth running and minimal tool vibration
- Ideal for PSA-type disc adhesion
- Quick disc removal

PRODUCT	PAD Ø	QTY/BOX
91456106T	5" (127 mm)	1

Suggested product(s):

PRODUCT	DESCRIPTION
914X51	5" (127 mm) non-vacuum disc pad vinyl-face
914X52	

Specifications:

- Composition: Premium urethane
- Thickness: 3/8" (10 mm)
- Density: Medium
- Spindle thread size: 5/16"-24 Male
- Max. speed: 13,000 rpm





MULTIMASTER FMM 350 QSL LIMITED EDITION

Self-supporting motor with vibration decoupling for outstanding vibration and noise reduction.

- Powerful 350 Watt high-performance motor for optimal cutting speeds and maximum work progress
- Highest quality and stability thanks to metal gear case and consistent use of ball or needle bearings
- Convenient QuickIN rapid-clamping system
- Integrated interface for mounting additional system accessories
- Softgrip zone provides optimal handling
- StarlockPlus tool mount with outstanding torque transfer, fits all Starlock™ and StarlockPlus accessories

Applications: Interior construction and renovation such as door jambs, toe kicks and hardwood flooring, woodwork, cabinets, and more

Included:

- Systainer (Sys 1 + Sys 1) x 2
- Large triangular perforated backing pad (130 mm edge length) x 1
- Perforated sanding sheets (60, 80, 180 grit) x 2
- Triangular perforated backing pad (80 mm edge length) x 1
- Perforated sanding sheets (60, 80, 120, 180 grit) x 5
- Rigid scraper blade x 1
- Dust extraction assembly x 1
- Universal saw blade (44 mm) x 1
- E-Cut Long-Life saw blade (35 mm) x 1
- E-Cut Long-Life saw blade (65 mm) x 1
- E-Cut Precision bimetal saw blades (types 205, 208) x 2

PRODUCT	OPERATING POWER	QTY/BOX
D030317S	350 W	1

Specifications:

- Chuck: StarlockPlus
- Tool change: QuickIN
- Max. speed: 10,000-19,500 RPM
- Sanding pad, corner to corner: 3 1/8"
- Cable with plug: 16.4'
- Net weight: 3.1 lb (1.4 kg)



CORDLESS MULTITALENT QUICKSTART OSCILLATING MACHINE

This universal tool system provides almost total access to the Starlock™ and StarlockPlus accessory range and, with its wide selection of original accessories, sets standards for all oscillating tools on the market.

- Self-supporting motor with vibration decoupling for outstanding vibration and noise reduction
- Easy to handle due to its ergonomic design and light weight
- Convenient, tool-free accessory change, using the QuickIN rapid change system
- StarlockPlus tool mount with outstanding torque transfer, fits all Starlock™ and StarlockPlus accessories
- High-performance li-ion batteries with SafetyCell technology
- Capacity indicator on every battery

Application: Interior construction and renovation such as door jambs, toe kicks and hardwood flooring, and more

Included:

- FEIN cordless MultiTalent AFMT 12 QSL x 1
- Backing pad x 1
- Sanding sheet (grits 80, 120, 180) 3x
- Universal E-CUT saw blade 1 1/8" (29 mm) 1 x
- Rapid charger ALG 50 1 x
- Li-Ion batteries (2.5 Ah) 2x
- Tool case x1

PRODUCT	VOLTAGE TYPE	QTY/BOX
D030346S	12 V	1

Suggested product(s):

PRODUCT	DESCRIPTION
D060550S	Starlock™ Plus Ecut blade set

Specifications:

- Chuck: StarlockPlus
- Tool change: QuickIN
- Max. speed: 11,000-18,000 RPM
- Range: 2" x 1.6"
- Net weight (with battery): 3.3 lb (1.4 kg)



1
SCREWS
AND
FASTENERS

2
FURNITURE
EQUIPMENT

3
HINGES

4
SLIDES

5
CASTERS
AND LEGS

6
KITCHEN
SOLUTIONS

7
CLOSET
SOLUTIONS

8
LIGHTING
SOLUTIONS

9
SINKS
AND
FAUCETS

10
OFFICE

11
SLIDING
DOORS

12
GLASS
HARDWARE

13
PANELS
AND
SURFACES

14
EDGE-
BANDING

15
CABINET
DOORS
AND
DRAWERS

16
CORBELS
AND FLOOR
REGISTERS

17
GLUES,
SILICONES,
CAULK AND
INSULATING

18
TOOLS
AND
SECURITY

19
FINISHING
PRODUCTS
AND SHOP
SUPPLIES

20
COMMERCIAL
DISPLAY
HARDWARE

21
MOLDING,
RAILING AND
BATHROOM
HARDWARE



STARLOCK™ PLUS ECUT BLADE SET

Includes 6 different Starlock™ E-Cut saw blades with bi-metallic teeth, compatible with Starlock™ tools. Starlock™ blades are also backward compatible with standard OIS fitting tools.

Application: Cutting materials such as drywall, wood, plastics, light metal, non-ferrous metals, drywall and much more

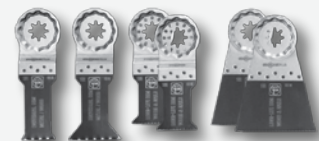
Included:

- 65 mm Long-Life blades (161) x 2
- 44 mm Universal blades (152) x 1
- 35 mm Long-Life blades (160) x 2
- 29 mm Universal E-Cut (151) x 1
- Plastic case x 1

PRODUCT	QTY/BOX
D060550S	1

Suggested product(s):

PRODUCT	DESCRIPTION
D030343S	Multimaster FMM 350 start Q set with Starlock™ Plus mount
D030344S	MultiMaster FMM 350 Q TOP set with Starlock™ Plus mount
D030346S	Cordless multitalent quickstart oscillating machine



STARLOCK™ MULTI-CUTTER BLADE

Because of the unique design of the blade, material can be cut by pressing, pulling or pushing the blade for maximum versatility.

- Three cutting surfaces for versatility
- Extremely flexible for a variety of applications and materials

Application: For cutting carpet, PVC flooring, cardboard, bitumen shingles and roofing paper

PRODUCT	QTY/BOX
D032511S	1
D032515S	5



STARLOCK™ PLUNGE CUT BLADES, 35 MM

Provides optimal plunge cutting and clean, precise cut edges, especially on smooth surfaces.

- Hooked cutting geometry
- Narrow, waisted shape for optimal cutting speed and good swarf removal

Application: For cutting all wood, drywall and plastic materials

PRODUCT	LENGTH	QTY/BOX
D060593S	2 5/32" (55 mm)	3
D0605910S		10



RANDOM ORBITAL FINISH SANDER - ETS 125 REQ

The versatile ETS 125 has the finest sanding stroke at 5/64" (2 mm), and is the ideal one-handed machine for maximum surface quality when finishing or pre-sanding.

- Ergonomically formed to fit comfortably in any size hand
- Step-less variable speed allows to adjust to the needs of the application
- Sanding pad brake for safe, faultless work
- Balanced vibration stop (VS) design delivers better finish results, and greater comfort
- Dual bearing for a long service life

Included:

- Long-life dust bag x 1
- StickFix sanding pad soft x 1
- Protector x 1
- Systainer SYS 2 T-LOC x 1

Application: Perfect for general sanding tasks, vertical surfaces and for overhead work

PRODUCT	Ø	QTY/BOX
FS574993	4 15/16" (125 mm)	1

Specifications:

- Dust extraction port: 1" (27 mm)
- Pad diameter: 5" (125 mm)
- Power consumption: 200 W / 120 V AC
- Sanding stroke: 5/64" (2 mm)
- Speed: 6,000 - 14,000 opm
- Weight: 2.65 lb (1.2 kg)



CARVEX ACCESSORY KIT

Compatible with all Festool CARVEX Jigsaw models

Included:

- Jigsaw Splinterguard (Pack of 5)
- StickFix baseplate
- Dimpled base insert
- Hard fiber base insert
- Steel base insert
- Angle base
- Guide rail base
- Circle cutter
- StickFix felt
- All accessories are organized in a T-LOC Systainer

PRODUCT	QTY/BOX
FS201186	1



DOMINO DF 700 CONNECTOR KIT

Break through the limits of shop-built pieces and on-site construction with the use of knock-down hardware. Create, build, and finish full-sized constructed pieces, then quickly disassemble, move, and then reassemble with only a hex wrench.

Domino fasteners work with the Domino XL (DF 700) Joiner to create flat or corner joints. Corner and flat connectors provide simple and quick connections without the need for templates or complex measuring. Colored cover caps provide high-quality corner connection appearance. Available as a set and individual components. Requires 35/64" (14 mm) cutter.

Included:

- Anchor bolts x 32
- Double-headed bolts x 16
- Split anchors, SV-SA D14 x 32
- Domino birch D 14 cm x 75 cm x 32
- Cross anchors 2 x 32
- SW 4 pin wrench for tightening the set screws x 1
- SV-V D14 widener for 32 cross anchors x 1
- Silver cover caps x 32
- Dark brown cover caps x 32
- Light brown cover caps x 32
- Systainer SYS 2 T-LOC x 1

PRODUCT	QTY/BOX
FS201353	1



1	SCREWS AND FASTENERS
2	FURNITURE EQUIPMENT
3	HINGES
4	SLIDES
5	CASTERS AND LEGS
6	KITCHEN SOLUTIONS
7	CLOSET SOLUTIONS
8	LIGHTING SOLUTIONS
9	SINKS AND FAUCETS
10	OFFICE
11	SLIDING DOORS
12	GLASS HARDWARE
13	PANELS AND SURFACES
14	EDGE-BANDING
15	CABINET DOORS AND DRAWERS
16	CORBELS AND FLOOR REGISTERS
17	GLUES, SILICONES, CAULK AND INSULATING
18	TOOLS AND SECURITY
19	FINISHING PRODUCTS AND SHOP SUPPLIES
20	COMMERCIAL DISPLAY HARDWARE
21	MOLDING, RAILING AND BATHROOM HARDWARE

DOMINO CONNECTOR EXTENSION SHELLS

Flexible, connect frames, panels, tops, and other large joints and pieces and easily disconnect and reconstruct as needed. Prevents the cross anchor being drawn into the material.

- For widening and pressure distribution when using Cross Anchors (FS201351) in materials such as particleboard and MDF
- For processing cross anchors for improved pressure distribution for applications in porous or soft materials such as kitchen worktops

Included: 64 half-shells for widening, 32 cross anchors

PRODUCT	QTY/BOX
FS201498	32

Suggested product(s):

PRODUCT	DESCRIPTION
FS201351	Cross Anchor for corners or flat connections



DOMINO COVER CAPS

Cosmetic plastic cover caps for closing exposed D14 mortise holes.

The corner and flat connector system for the DOMINO XL (DF 700) joining machine enables stable connections that can be separated again at a material thickness of 30 mm or higher. Create, build, and finish full-sized constructed pieces, then quickly disassemble, move, and then reassemble with only a hex wrench.

- Simple and quick connection - no template or other accessories required
- Colored cover caps provide high-quality corner connection appearance
- Extremely flexible and can be detached again quickly if necessary

PRODUCT	FINISH	QTY/BOX
FS201355	Brown	1
FS201354	Silver	
FS201356	Light Brown	



SPLIT ANCHOR FOR CORNERS CONNECTIONS

Split Anchor for creating detachable corner connections. For use with the DOMINO XL DF 700 joining machine (FS574432) Sold separately.

Application: For frame and rack joints at material thicknesses of 1 3/16" (30 mm) or higher

PRODUCT	QTY/BOX
FS201349	32

Suggested product(s):

PRODUCT	DESCRIPTION
FS201350	Connection anchor bolt for corners



ANCHOR BOLT FOR CORNER CONNECTIONS

Corner connectors provide simple and quick connections without the need for templates or complex measuring. For use with the DOMINO XL DF 700 joining machine (FS574432) Sold separately.

Application: For frame and rack joints at material thicknesses of 1 3/16" (30 mm) or higher

Included:

- Anchor bolts for corner connections x 32
- Half-shells x 64

PRODUCT	QTY/BOX
FS201350	32

Suggested product(s):

PRODUCT	DESCRIPTION
FS20135X	Domino cover caps



DOUBLE-HEADED ANCHOR BOLT FOR FLAT CONNECTIONS

Flat connectors provide simple and quick connections without the need for templates or complex measuring. The double-headed bolts can be clipped using 2 Half-Shells or (as shown) with 4 Half-Shells, depending on the required alignment. For use with the DOMINO XL DF 700 joining machine (FS574432) Sold separately.

Included:

- Double-headed bolts x 16
- Half-shells x 64

PRODUCT	QTY/BOX
FS201352	16

Required product(s):

PRODUCT	DESCRIPTION
FS201351	Cross Anchor for corners or flat connections

Suggested product(s):

PRODUCT	DESCRIPTION
FS20135X	Domino cover caps



CROSS ANCHOR FOR CORNERS OR FLAT CONNECTIONS

Acts as a counter bearing and tightening element for anchor bolts or double-headed bolts. For use with the DOMINO XL DF 700 joining machine (FS574432) Sold separately.

Included: 32 cross anchors including set screws

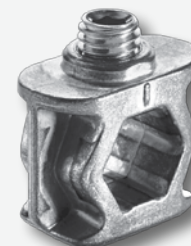
PRODUCT	QTY/BOX
FS201351	32

Required product(s):

PRODUCT	DESCRIPTION
FS201350	Connection anchor bolt for corners
FS201352	Double-Headed anchor bolt for flat connections

Suggested product(s):

PRODUCT	DESCRIPTION
FS201498	Domino connector extension shells
FS20135X	Domino cover caps



1
SCREWS
AND
FASTENERS

2
FURNITURE
EQUIPMENT

3
HINGES

4
SLIDES

5
CASTERS
AND LEGS

6
KITCHEN
SOLUTIONS

7
CLOSET
SOLUTIONS

8
LIGHTING
SOLUTIONS

9
SINKS
AND
FAUCETS

10
OFFICE

11
SLIDING
DOORS

12
GLASS
HARDWARE

13
PANELS
AND
SURFACES

14
EDGE-
BANDING

15
CABINET
DOORS
AND
DRAWERS

16
CORBELS
AND FLOOR
REGISTERS

17
GLUES,
SILICONES,
CAULK AND
INSULATING

18
TOOLS
AND
SECURITY

19
FINISHING
PRODUCTS
AND SHOP
SUPPLIES

20
COMMERCIAL
DISPLAY
HARDWARE

21
MOLDING,
RAILING AND
BATHROOM
HARDWARE

FESTOOL

REINFORCEMENT CROSS BARS FOR MULTIFUNCTION WORK TABLES MTF/3

These cross bars can be used to reinforce the MFT Multifunction Table, particularly when it is used for applications where significant lateral force is needed.

For use with the MFT/3 and the MFT 1080 Multifunction Tables.

- Connects the legs to the table top for added stability
- Folds down and attaches to the leg for transportation
- Very useful in applications where significant lateral force is needed

Included: 2 Cross Member supports

Sold by pair

PRODUCT	QTY/BOX
FS495502	1



KAPEX MOBILE BASE SET FOR MATERIAL PROCESSING

Practical and collapsible solution for transporting the Festool KAPEX radial miter saw.

- Supports material up to 94-1/2" (2.4 m) in length
- Integrated metric tape measure
- Attaches tool-free to Kapex UG stand
- Simple folding for transport
- Rugged, mobile base provides the foundation for precise and efficient material processing on the jobsite or in the shop
- Designed for fast and simple setup and breakdown, the UG stand is built for maximum mobility
- Provides stock support with integrated flip stop, measurement scale and adjustable leg
- Expands from 58-1/4" (1480 mm) to 94-1/2" (2400 mm)

Included:

- 2 folding extensions (left and right) with tool-free connection to the Kapex
- Metric scale x 1
- Flag stop for repeat cuts x 1

PRODUCT	QTY/BOX
FS497354	1

Suggested product(s):

PRODUCT	DESCRIPTION
FS561287	Kapex KS 120 sliding compound miter saw

Specifications:

- Weight: 46.3 lb (21 kg)
- Work height: 35 1/2" (900 mm)
- Overall Length:
11'5/16" (3360 mm)
- Fully extended length:
15'9-1/2" (4813 mm)





21-GAUGE BRAD NAILER - H850LX

The H850LX is equipped with all the newest features found in Grex tools including the first to include an integrated edge guide.

The 21-gauge nails offer a middle ground between the small hole size left by a 23-gauge pin and the holding strength of an 18-gauge brad nail.

- One-Touch Over-Ride button allows use of the 7 remaining "reserve" pins
- Large powerful motor for consistent drive power into hardwoods
- Auto Lock-Out prevents dry-firing and project damage
- On-Board adjustable Edge Guide to work faster and more precisely
- On-Board Edge Guide Holder for convenient storage when not in use
- Patented magazine self-adjusts for 14 different fastener lengths
- Narrow nose design for access to more tight areas and angles
- Drop-in fastener loading for quick and easy re-loading
- Fastener indicator window shows nail supply; alerting operator to reload
- Swivel air coupler helps keep air hose tangle-free
- No-mar guidelines for accurate nailing
- Rear magazine cap with hex wrench and spare no-mar tip storage
- Rubber handgrip for a firm comfortable grip

PRODUCT	QTY/BOX
9145H850LX	1

Suggested product(s):

PRODUCT	DESCRIPTION
9146P650LXKD	O-Ring kit for Grex nailers

Specifications:

- Operating pressure: 60 ~ 110 PSI (4 ~ 7.6 bars)
- Fastener range: 3/8" ~ 2" (10 ~ 50 mm)
- Fastener capacity: 1 strip (approx. 150 brad)
- Height: 9.75" (247.6 mm)
- Length: 9" (228.6 mm)
- Width: 2" (50.8 mm)
- Weight: 3.6 lb (1.6 kg)



O-RING KIT FOR GREX NAILERS

Grex nailers are designed for longevity and optimal performance. Over time, O-rings do fatigue and require replacement.

PRODUCT	MODEL	QTY/BOX
91461850GBKD	1850GB	1
914650ADKD	50AD	
91469032KD	9032, GSKV, 1850	
91469040KD	9040, 1664	
9146P630KD	P630	
9146P635KD	P635	
9146P650KD	P650	
9146P650LXKD	P650LX, H850LX	

Suggested product(s):

PRODUCT	DESCRIPTION
9145GSKV	Pilaster stapler
91459032	18-gauge narrow crown stapler (9032)
9145P1850	18-gauge brad nailer (1850)





REPLACEMENT SOFT TIP (5-PACK)

Replacement non-marking tips for Grex pinners.

PRODUCT	MODEL	QTY/BOX
914628813	1850GB	1
914663520	P635, P645L, P650L, P645, P650	
914668016	P650LX	



Required product(s):

PRODUCT	DESCRIPTION
9145P635	23-gauge headless pinner (P635)
9145P650L	23-gauge headless pinner (P650L)

DRIVER MAINTENANCE KIT FOR GREX NAILERS

Grex nailers are designed for longevity and optimal performance. Over time, drivers do fatigue and require replacement.

PRODUCT	MODEL	QTY/BOX
91461664KB	1664	1
91461850GBKB	1850GB	
91461850KB	1850	
914650ADKB	50AD	
91469032KB	GSKV, 9032	
91469040KB	9040	
9146H850LXKB	H850LX	
9146P630KB	P630	
9146P635KB	P635	
9146P650KB	P645, P645L, P650L, P650	
9146P650LXKB	P650LX	



Suggested product(s):

PRODUCT	DESCRIPTION
91451850GB	18-gauge brad nailer (1850) green buddy



CIRCULAR SAW GUIDE TRACK SYSTEM

Transform your circular saw into a high-performance, track-guided cutting system.

Start projects right by making straight, accurate, splinter-free cuts with your circular saw and the Accu-Cut Circular Saw Guide Track System.

The Accu-Cut is easy and intuitive for a novice to use, but robust enough for professionals. Because it eliminates the need to keep the saw straight and manually guide the saw along a cut line, the Accu-Cut is ideal for less-experienced users.

- No clamps are required to hold the track in place thanks to dual guide strips
- Anti-slip coating to prevent slipping, and an antichip feature to prevent splintered cuts
- Begin cuts easily with a Starting Block that the supports saw and allows normal blade guard operation
- Mount almost any circular saw--left or right blade--to the Universal Sled
- Universal Sled is compatible with the Kreg Rip-Cut

Application: Cuts in plywood, MDF, and panels

Included:

- Universal Saw Sled
- 2 26 1/2" (673 mm) Aluminum Guide Tracks
- 2 Track Connectors
- Starting Block
- Track Indicator Clip
- Detailed setup and usage instructions

PRODUCT	QTY/BOX
9132131	1

Suggested product(s):

PRODUCT	DESCRIPTION
9132132	Rip-cut circular saw edge guide

Specifications:

- Guide track: Aircraft-quality aluminum with dual anti-chip, anti-slip guide strips
- Saw sled: Accepts left- and right-blade saws: Built-in indexing stop and precision cursor
- Cut length: Maximum 48" (1220 mm)



RIP-CUT CIRCULAR SAW EDGE GUIDE

Turn an ordinary circular saw into a precision edge-guided cutting tool

The Kreg Rip-Cut turns your circular saw into a precision edge-guided cutting tool.

The Rip-Cut easily makes straight, accurate, repeatable cuts without measuring, marking, or having to keep the saw on the cut line. The Rip-Cut does this with a long edge guide that follows the straight edge of the sheet you are cutting.

- Make rip cuts and crosscuts up to 24" (610 mm) wide
- Cut multiple pieces to the same size with just one setup
- Use the oversize edge guide for precise control throughout the cut
- Eliminate need for marking, measuring, and layout lines
- Universal Sled accepts most circular saws--left or right blade
- Reversible edge guide for left- or right-handed use

Application: Cuts in plywood, MDF, and other large sheets

Included:

- Universal Saw Sled
- Aluminum Guide Rail
- Precision Edge Guide
- Detailed Setup and Usage Instructions

PRODUCT	QTY/BOX
9132132	1

Suggested product(s):

PRODUCT	DESCRIPTION
9132131	Circular saw guide track system

Specifications:

- Aluminum Rail: 3" (76.2 mm) wide x 30" (762 mm) long
- Materials: High-quality aluminum and impact-resistant plastic polymer
- Saw Sled: Accepts left- and right-blade saws, built-in indexing stop and precision cursor
- Cut Width: Maximum 24" (610 mm)



- 1 SCREWS AND FASTENERS
- 2 FURNITURE EQUIPMENT
- 3 HINGES
- 4 SLIDES
- 5 CASTERS AND LEGS
- 6 KITCHEN SOLUTIONS
- 7 CLOSET SOLUTIONS
- 8 LIGHTING SOLUTIONS
- 9 SINKS AND FAUCETS
- 10 OFFICE
- 11 SLIDING DOORS
- 12 GLASS HARDWARE
- 13 PANELS AND SURFACES
- 14 EDGE-BANDING
- 15 CABINET DOORS AND DRAWERS
- 16 CORBELS AND FLOOR REGISTERS
- 17 GLUES, SILICONES, CAULK AND INSULATING
- 18 TOOLS AND SECURITY
- 19 FINISHING PRODUCTS AND SHOP SUPPLIES
- 20 COMMERCIAL DISPLAY HARDWARE
- 21 MOLDING, RAILING AND BATHROOM HARDWARE



FOLDING WORK TABLE

The folding work table provides a portable workspace that can be used for a wide variety of project tasks. In one mode, it's a sturdy sawhorse that's great for supporting long boards as you cut. Flip the large tables into position and this product offers the features you'd expect to find in a high-end stationary workbench.

- Locking table supports with easy-release tabs
- Included Kreg Bench Clamp with Automaxx® clamps vertically and horizontally
- Built-in storage trays hold hardware and other parts
- Storage shelf holds up to 25 lb (11.3 kg)
- Folds down in seconds for work on the go and easy storage
- 6 1/2" (165 mm) thick when folded
- Expandable by pairing with a second folding work table
- Hole pattern on tables accept Kreg Bench Dogs and other accessories

Included:

- Kreg Bench Clamp with Automaxx® Technology
- 4 Kreg Bench Dogs
- 2 support brackets
- 2 Trak bushings
- 2 connection keys
- Owner's manual

PRODUCT	HEIGHT	LOAD CAPACITY	WEIGHT	QTY/BOX
9132138	31 1/2" (800 mm)	350 lbs. (158 kg)	40 lb (18 kg)	1



CONCEALED HINGE JIG

The Concealed Hinge Jig takes the guesswork out of installing cabinet doors using concealed hinges. This economical, easy-to-use jig ensures accurate hinge alignment, so you can install doors that fit great and work well. Plus, the Concealed Hinge Jig works with an ordinary drill and the included carbide tipped bit.

The Concealed Hinge Jig allows you to drill cup holes for concealed cabinet door hinges (sometimes called "Euro hinges") using just a drill. The jig positions an included carbide-tipped bit exactly at the proper position and offset, and drills to the perfect depth every time thanks to a depth stop collar. The jig is simple to use, and it ensures that you can mount cabinet doors that fit great and work properly.

Note: A 1/16" bit is required to drill for hinge-mounting screws. Not included

- Accurate hinge positioning with built-in indexing tabs
- Repeatable results with built-in measuring scales
- Reliable drilling with bit guide and stop collar
- Simple to use with any drill - no special tools needed
- Adjustable cams ensure proper hinge offset
- Durable carbide-tipped drill bit included
- Strong, lightweight materials for easy handling

Included:

- Jig base with index cams
- Drill guide
- 35 mm carbide-tipped drill bit
- Stop collar with Hex wrench
- Owner's manual

PRODUCT	QTY/BOX
9132134	1

Suggested product(s):

PRODUCT	DESCRIPTION
9132135	35 Mm concealed hinge jig bit

Specifications:

- Hinge Compatibility:
35 mm cup-style concealed hinges
- Construction:
Durable glass-filled nylon
- Hinge Offset:
3 mm, 4 mm, 5 mm, 6 mm
- Hinge Offset from Door End:
2" (50 mm) to unlimited





35 MM CONCEALED HINGE JIG BIT

The 35 mm Concealed Hinge Bit makes it possible to bore clean, perfect holes for concealed hinges. The bit is a direct replacement for the bit that's included in the Concealed Hinge Jig.

- Works with all 35 mm concealed hinges
- Shank fits perfectly in Concealed Hinge Jig drill guide
- Shoulder ensures accurate stop-collar positioning
- Stop collar with Concealed Hinge Jig (9132134) sold separately
- Spurs create clean hole edges without tearout
- Large carbide cutters bore a flat, smooth hole

Sold by unit

PRODUCT	Ø	QTY/BOX
9132135	1 3/8" (35 mm)	8



CUSTOM POCKET-HOLE PLUG CUTTER

The Custom Pocket-Hole Plug Cutter allows you to create face grain plugs that blend in amazingly well, whether the plugs are in line with the grain, or they run across the grain.

This high-performance bit features a specially designed cutting tip that shears cleanly for a smooth, consistent plug. Fluting reduces heat and friction for better plugs and longer bit life, while a positive stop collar ensures perfect depth every time to produce accurately sized plugs. Once the plugs are drilled, they can easily be cut free using a band saw or hand saw.

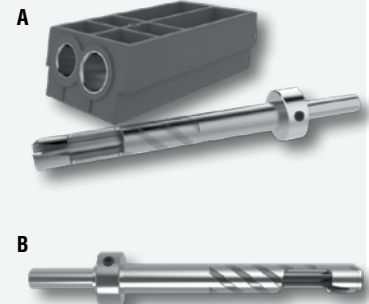
- Fits into any Kreg Jig® (K3, K4, or K5)
- Hardened-steel drill guides provide reliable drilling and feature a lifetime warranty
- Works with standard Plug Cutting Bit (included)
- Works with HD and Micro Bits (9132137) sold separately
- Bit tip shears wood fibers cleanly to create a smooth, consistent plug
- Special fluting reduces heat and friction for better plugs and longer bit life

Included:

- Custom Pocket-Hole Plug Cutter
- Custom Plug Cutting Bit for standard pocket-hole sizes
- Bit stop collar
- Hex wrench
- Owner's manual

Sold by unit

REF.	PRODUCT	DESCRIPTION	QTY/BOX
A	9132136	Custom pocket-hole plug cutter, custom plug cutting bit for standard pocket-hole sizes, bit stop collar, hex wrench, owner's manual	10
B	9132137	Custom 3/8" (9.5 mm) cutting bit	24



EXTREME CARBIDE TITANIUM STORM BLADES, 1-3/8" - T360

High performance carbide teeth, titanium coated, bi-metal STORM blades.

- 30x longer life than bi-metal blades
- Universal fitment for use on all major brands

Application: Cuts metal, hardened screws, wood, PVC, tile and drywall.

PRODUCT	WIDTH	QTY/BOX
IB36002	1 3/8" (35 mm)	2
IB36005		5
IB36010		10





36 V LXT® LI-ION CORDLESS PLUNGE CUT CIRCULAR SAW

This tool is engineered to deliver the power and performance of a corded jig saw without the hassles of a cord. Its high maneuverability delivers power and performance with up to 40% faster cutting rate.

- Blade starts slowly and builds up to speed to avoid damage
- Constant speed control maintains constant speed under heavy load
- Integrated battery level gauge
- Brushless motor is durable and efficient
- Overload protection prevents motor burnout due to current overload
- Ergonomic soft rubber grip design for vibration absorption and comfortable operation
- Automatic torque Drive Technology (ADT) feature adjusts the torque and speed according to the load condition
- Batteries recharge in just 25 minutes

Included: Tool only (batteries and charger sold separately)

Application: Perfect for fast cutting and ripping

PRODUCT	VOLTAGE TYPE	QTY/BOX
MKTDSP600ZJ	36 V (18 V x 2)	1

Specifications:

- Blade diameter: 6 1/2" (165 mm)
- Max. cutting depth:
0° = 2 3/16" (56 mm)
45° = 1-9/16" (40 mm)
50° = 1-1/2" (38 mm)
- Max. speed: 2,500 - 6,300 rpm
- Battery: Two 18 V Li-ion (not included)
- Vibration level: 2.5 m/s²
- Noise level: 92 dB(A)
- Overall length: 13 5/8" (346 mm)
- Net weight: 8.6 lb (3.9 kg)



12 V CXT® LI-ION CORDLESS IMPACT DRIVER/DRILL COMBO KIT

The Makita 12 V MAX lithium-ion Cordless 2-Piece combo kit delivers pro power and pro speed in an ultra-compact size.

- Built-in LED light illuminates the work area
- Compact design - Ideal in tight spaces
- Ergonomically designed handles with rubberized soft grips
- Battery charge time: 60 minutes

Included:

- 3/8" Drill/Driver x 1
- 1/4" Impact Driver x 1
- 12V Max (1.5 Ah) CXT batteries x 2
- Charger x 1
- Tool bag x 1

PRODUCT	VOLTAGE TYPE	QTY/BOX
MKTCLX201S	12 V	1

Specifications:

- 1/4" Impact Driver:
- Max. torque: 970 In. lbs
 - Variable speed: 0-2,600 rpm & 0-2,400 ipm
 - Length: 6 1/8" (155 mm)
 - Weight: 2.2 lb (1 kg)

- 3/8" Driver Drill:
- Max. torque: 210 in.lb
 - 2-Speed: 0-450 & 0-1,700 rpm
 - Length: 7 7/16" (189 mm)
 - Weight: 2.8 lb (1.3 kg)





18 V LXT® LI-ION BRUSHLESS CORDLESS JIG SAW

Makita's Cordless Jig Saw with a brushless motor delivers a powerful performance and features a rubberized soft grip handle for increased comfort and easy handling. Delivers the power and performance of a corded jig saw without the hassles of a cord.

- BL™ Brushless motor generates less heat buildup
- Push button lock-off switch prevents accidental startup
- Large variable speed trigger switch with lock-on button for maximum operational efficiency
- Built-in dust blower clears the line of cut for increased accuracy
- Three orbital settings and straight cutting
- Twin LED job light illuminates your work surface
- Rigid aluminium base bevels 0° to 45° left and right
- Compatible with Makita 18 V Li-ion batteries with a Star symbol (battery sold separately)

Included:

- Tool only
- Set of jigsaw blades (two each of B-10, BR-13, B-22)
- Hexagonal key 4 x 1
- Splash guard x 1

PRODUCT	VOLTAGE TYPE	QTY/BOX
MKTDJV181Z	18 V	1

Suggested product(s):

PRODUCT	DESCRIPTION
MKTY00309	18 V LXT® Li-ion Battery (5.0Ah) and Charger Starter Pack

Specifications:

- Length of stroke: 1" (25 mm)
- Max. cutting capacity at 90°:
Wood: 5 5/16" (135 mm)
Mild steel: 3/8" (10 mm)
Aluminum: 25/32" (20 mm)
- Max. speed: 800 - 3500 spm
- Battery: 18 V LXT® Li-ion (not included)
- Vibration level: 6.5 m/s²
- Noise level: 78 dB (A)
- Overall length: 10 1/2" (267 mm)



18 V LXT® LI-ION CORDLESS 3 1/4" (83 MM) PLANER

The XPK01Z combines the speed and capacity of a corded planer with the convenience of cordless. The result is fast and accurate stock removal, without the cord.

- 2-blade cutter head with double edge carbide blades for added performance and smooth finish
- High power-to-weight ratio; weighs only 7.4 lb (3.4 kg) with battery (battery not included)
- 14,000 RPM motor engineered for faster stock removal
- Spring-loaded stand elevates the base to protect the blades and workpiece
- Precision machined aluminum base for planing accuracy
- Easy blade setting system for fast blade installation
- Electric brake for maximum productivity
- Compatible with Makita 18V Lithium-Ion batteries with a Star symbol (battery sold separately)

Application: Engineered for door and window installers, finish carpenters, deck installers, remodelers, and general contractor.

Included:

- Tool
- 8-25 cm (3-1/4") planing carbide mini-blade x 1
- Blade installation template x 1
- Socket wrench 9 x 1
- Alignment guide x 1

PRODUCT	VOLTAGE TYPE	QTY/BOX
MKTDKP180Z	18 V	1

Suggested product(s):

PRODUCT	DESCRIPTION
MKTY00309	18V Li-ion battery pack (5.0Ah) and fast charger
ATICK100	Blade for portable planer - 3-1/4"

Specifications:

- Planing width: 3 1/4" (82 mm)
- Planing depth: 5/64" (2 mm)
- Shiplapping: 11/32" (9 mm)
- Max. speed: 14,000 rpm
- Battery: 18 V LXT® Li-ion (not included)
- Overall length: 13 -1/8" (333 mm)
- Net weight: 6.2 lb (2.8 kg)





18 V LXT® LI-ION BRUSHLESS CORDLESS COMPACT ROUTER

The 18 V LXT® Router has an efficient Makita BL™ Brushless Motor for up to 50% longer run time, increased power and speed, and longer tool life.

- Progressive start with gradual increase in speed to eliminate shock from starting
- Variable speed control dia to match the speed to the application
- Push-button ON/OFF and control of LOCK/UNLOCK
- Optional plunging base set with precise depth of cut for accurate cuts
- Optional misaligned base assembly allows cuts only 3/4" (19 mm) from walls
- Interchangeable bases offer maximum versatility, good visibility of the cutter
- Compatible with Makita 18 V LXT® Li-ion batteries (sold separately)

PRODUCT	VOLTAGE TYPE	QTY/BOX
MKTDRT50ZX4	18 V	1

Suggested product(s):

PRODUCT	DESCRIPTION
MKTY00309	18V Li-ion battery pack (5.0ah) and fast charger

Specifications:

- Clamp capacity:
1/4"- 3/8" (6.35 - 9.53 mm)
- Max. speed: 10,000 - 30,000 rpm
- Battery: 18 V Li-ion (not included)
- Vibration level: 4.5 m/s²
- Noise level: 78 dB (A)
- Overall height: 8 7/8" (226 mm)
- Net weight: 3.4 lb (1.5 kg)



12 V CXT® CORDLESS GLASS & CERAMIC TILE CIRCULAR SAW

Specifically designed for cutting glass and ceramic tile.

- Battery Protection System shuts tool off when overloaded or when battery capacity is low
- Left and Right Hand Lock-Off Lever for maximum operator safety
- Water Supply Tank (500 ml) features large cap for quick and easy refilling
- Nickel-plated base for rust prevention
- Bevel Capacity of 45°
- Blower function - Blows sawdust off the cut line ahead for a better cutting view
- On-tool storage for hex wrench

Application: Specifically designed for cutting glass and ceramic tile

Included:

- 12 V Max (1.5Ah) Li-Ion CXT® batteries x 2
- Charger x 1
- 3 3/8" (85 mm) Diamond blade x 1
- Hexagonal Wrench 4 x 1

PRODUCT	VOLTAGE TYPE	QTY/BOX
MKTCC301DSYE	12 V	1

Suggested product(s):

PRODUCT	DESCRIPTION
MKTA95722	3-3/8" replacement diamond blade for glass and tile

Specifications:

- Blade diameter: 3 3/8" (85 mm)
- Max. cutting depth:
0° - 1" (0 - 25 mm)
45° - 5/8" (16.5 mm)
- Max. speed: 1,600 rpm
- Overall length: 12 3/8" (313 mm)
- Net weight: 4 lb (1.8 kg)
- Fits biscuit sizes #0, #10, #20





18 V LXT® LI-ION CORDLESS PLATE JOINER

The Makita 18 V LXT® Lithium-Ion Cordless Plate Joiner provides portability and performance in the field or in the shop - without the cord.

- Provides up to 320 cuts or 160 joints on a single charge (18 V LXT® 3.0Ah battery, sold separately)
- Rack-and-pinion vertical fence system engineered for accurate fence adjustments
- Cast aluminum pivot fence with three positive stops at 0°, 45° and 90°, and easy centering on 3/4" (19 mm) material
- Six depth settings with one-touch stops for most common biscuits sizes
- Large and easy-to-operate cam locks for fence adjustments
- "Tool-less" blade cover and shaft lock for fast and easy blade changes
- Rapid Optimum Charger has a built-in fan to cool the battery for faster, more efficient charging
- Compatible with Makita 18 V Lithium-Ion batteries with a Star symbol

Specifications:

- Blade diameter: 4" (102 mm)
- Max. cutting depth: 3/4" (19 mm)
- Max. speed: 6500 rpm
- Battery: 18 V LXT® Li-ion (not included)
- Overall length: 13-3/4" (349 mm)
- Net weight (with battery): 6.7 lb (2.7 kg)
- Fits biscuit sizes #0, #10, #20



Application: Biscuit joints for furniture making, cabinet construction and fine woodworking applications

Included:

- Tool only
- 4" (102 mm) carbide blade x 1
- Six-tooth x 1
- Corner guide x 1
- Sawdust bag x 1
- Locknut wrench 20 x 1
- Adjustment plate x 1

PRODUCT	VOLTAGE TYPE	QTY/BOX
MKTXJP03Z	18 V	1

Required product(s):

PRODUCT	DESCRIPTION
MKTY00309	18 V LXT® lithium-ion battery and charger starter pack (4.0ah)

Suggested product(s):

PRODUCT	DESCRIPTION
MKTA95118	4" blade for MKTPJ7000 makita plate joiners

18 V LXT® LI-ION CORDLESS 3 1/4" (83 MM) PLANER

The Makita 18V LXT® Lithium-Ion Cordless Planer combines the speed and capacity of a corded planer with the convenience of cordless. The result is fast and accurate stock removal.

- 2-blade cutter head with double edge carbide blades for added performance and smooth finish
- High power-to-weight ratio; weighs only 7.4 lb (3.4 kg) with battery
- 14,000 RPM motor engineered for faster stock removal
- Spring-loaded stand elevates the base to protect the blades and workpiece
- Precision machined aluminum base for planing accuracy
- Easy blade setting system for fast blade installation
- Electric brake for maximum productivity
- Compatible with Makita 18 V Li-ion batteries with a Star symbol

Specifications:

- Planing width: 3 1/4" (82 mm)
- Planing depth: 5/64" (2 mm)
- Shiplapping: 11/32" (9 mm)
- Max. speed: 14,000 rpm
- Battery: 18 V LXT® Li-ion (not included)
- Overall length: 13 1/8" (333 mm)
- Net weight: 6.2 lb (2.8 kg)



Application: Engineered for door and window installers, finish carpenters, deck installers, remodelers, and general contractors.

Included:

- Tool
- Socket wrench x 1
- Blade set x 1
- Blade gauge x 1

PRODUCT	VOLTAGE TYPE	QTY/BOX
MKTXPK01Z	18 V	1

Required product(s):

PRODUCT	DESCRIPTION
MKTY00309	18 V LXT® lithium-ion battery and charger starter pack (4.0ah)



18 V LXT® LI-ION BRUSHLESS CORDLESS JIG SAW

The Makita 18V LXT® Lithium-Ion Brushless Cordless Jig Saw seamlessly combines precision and power with the efficiency of brushless. Delivers the power and performance of a corded jig saw without the hassles of a cord.

- BL™ Brushless motor generates less heat buildup
- Push button lock-off switch prevents accidental startup
- Large variable speed trigger switch with lock-on button for maximum operational efficiency
- Built-in dust blower clears the line of cut for increased accuracy
- Three orbital settings and straight cutting
- Twin LED job light illuminates your work surface
- Rigid aluminium base bevels 0° to 45° left and right
- Compatible with Makita 18 V Lithium-Ion batteries with a Star symbol (battery sold separately)

Included:

- Tool only (battery and charger sold separately)
- Blade set x 1
- Blade gauge x 1
- Socket wrench x 1

PRODUCT	VOLTAGE TYPE	QTY/BOX
MKTXP01Z	18 V	1

Required product(s):

PRODUCT	DESCRIPTION
MKTY00309	18 V LXT® lithium-ion battery and charger starter pack (4.0ah)

Specifications:

- Length of stroke: 1" (25 mm)
- Max. cutting capacity at 90°:
Wood: 5 5/16" (135 mm)
Mild steel: 3/8" (10 mm)
Aluminum: 25/32" (20 mm)
- Max. speed: 800 - 3,500 spm
- Battery: 18 V LXT® Li-ion (not included)
- Vibration level: 6.5 m/s²
- Noise level: 78 dB (A)
- Overall length: 10 1/2" (267 mm)



18 V LXT® LI-ION BATTERY (4.0AH) AND CHARGER STARTER PACK

Build your own Makita tool kit with the 18V Li-ion Battery and Charger Starter Pack. Makita offers over 100 cordless tools and most are available as "bare tools" (tool only, no batteries or charger included).

- Integrated LED battery charge level indicator allows user to monitor battery charge
- 18 V LXT® Li-ion 4.0Ah battery reaches a full charge in 40 minutes or less
- Battery delivers consistent power and run time in extreme temperatures, even in winter (-4°F/-20°C)
- Equipped with Star Protection Computer Controls™ to protect against overloading, over-discharging and over-heating
- Impact-resistant outer case and shock-absorbing inner-liner are engineered to protect the battery
- Battery resists self-discharge and remains ready for use even after long periods of storage

Included:

- 18 V LXT® Lithium-ion Rapid Optimum Charger (DC18RC) x 1
- 18 V LXT® Lithium-ion 4.0Ah Battery (BL1840B) x 1

PRODUCT	VOLTAGE TYPE	QTY/BOX
MKTBL1840BDC1	18 V	1

Suggested product(s):

PRODUCT	DESCRIPTION
MKTJVJ02Z	18V LXT® Li-ion brushless cordless jig saw
MKTJJP03Z	18V LXT® Li-ion cordless plate joiner
MKTXP01Z	18V LXT® Li-ion cordless 3-1/4" planer





ROTARY KNIFE

This rotary cutter can accommodate up to eight layers of material.

- Durable straight handle
- Blade cover for safety
- Blade width: 2 3/8" (60 mm)

Application: Ideal for medium- to heavy-duty projects

PRODUCT	QTY/BOX
90RTY3G	1



ROTARY BLADE

This blade is good for cutting strips and multiple layers at once. Made of tungsten tool steel.

Application: Cuts fabric, paper, tarp, vinyl, upholstery, and more

PRODUCT	FINISH	WIDTH	QTY/BOX
90RB601	Natural	1 3/8" (60 mm)	1

Suggested product(s):

PRODUCT	DESCRIPTION
90RTY3G	Rotary knife



SELF-RETRACTING CUTTER

- Semi-automatic blade retraction for greater user safety
- Fits comfortably in either right or left hand; rotate blade 180° for left-handed use
- Secure blade hold for ultimate cutting performance
- Rotate or change blades without the need for tools

Application: Ideal for cutting through light- to heavy-duty materials

PRODUCT	QTY/BOX
909048	1

Suggested product(s):

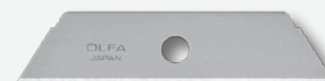
PRODUCT	DESCRIPTION
909613	Replacement blades for self-retracting cutter



REPLACEMENT BLADES FOR SELF-RETRACTING CUTTER

- Versatile heavy-duty blades
- Standard trapezoid blade design
- Made from high-quality carbon tool steel

PRODUCT	QTY/BOX
909613	10



1
SCREWS
AND
FASTENERS

2
FURNITURE
EQUIPMENT

3
HINGES

4
SLIDES

5
CASTERS
AND LEGS

6
KITCHEN
SOLUTIONS

7
CLOSET
SOLUTIONS

8
LIGHTING
SOLUTIONS

9
SINKS
AND
FAUCETS

10
OFFICE

11
SLIDING
DOORS

12
GLASS
HARDWARE

13
PANELS
AND
SURFACES

14
EDGE-
BANDING

15
CABINET
DOORS
AND
DRAWERS

16
CORBELS
AND FLOOR
REGISTERS

17
GLUES,
SILICONES,
CAULK AND
INSULATING

18
TOOLS
AND
SECURITY

19
FINISHING
PRODUCTS
AND SHOP
SUPPLIES

20
COMMERCIAL
DISPLAY
HARDWARE

21
MOLDING,
RAILING AND
BATHROOM
HARDWARE

LASER MEASURING SET

A three-beam automatic laser level set that includes:

- 1 tripod and wall mount
- 3 AA alkaline batteries
- 1 pair of tinted glasses
- 1 magnetic target
- 1 laser boom with carrying case
- 1 soft carrying case

Sold by unit

PRODUCT	FINISH	QTY/BOX
9126610	Yellow	4



EDGEBOARDING SYSTEM

The edgebanding system lets you apply wood and polyester edge finishes to veneered or plastic laminate boards quickly and easily. The hot melt adhesive on the edgebanding is softened and activated when it passes the hot air of the heat gun. A pinch roller then presses the edgebanding against the veneered or laminated board.

- Electronically controlled heat element offers infinitely variable heat for a wide range of edgebanding material up to 2 1/4" (57 mm) wide
- On / Off rocker switch and heat control dial are conveniently located for ease of use
- Built-in cut-off knife with palm-strike knob produces consistently accurate cuts
- 26 3/4" x 7 1/2" (679 x 191 mm) laminate covered table supports large workpieces
- Adjustable non-slip rubber feet

PRODUCT	QTY/BOX
REB100	1

Specifications:

- Temperature range: 212 °F - 392 °F (100 - 200° C)
- Max. tape width: 2-1/4" (57 mm)
- Voltage: 115 V AC
- Weight: 26 lb (11.8 kg)



HEATING GUN FOR EDGEBOARDING

A powerful heat gun with variable temperature and electronic thermocouple control for flexible use and maximum reliability. The heating element ensures long life and even heat.

- 3 stage switch
- Air filters
- DuraTherm™ ceramic heating element
- Barrel shape for optimum stationary use
- Double insulated

PRODUCT	QTY/BOX
RHG100	1

Specifications:

- Temperature range: 200°F - 1100°F (49°C - 593°C)
- Airflow: 14.8 cfm
- Output: 1500 watts
- Voltage: 120 VAC/60 Hz
- Weight: 2.1 lb (33.6 oz)



VACUUM LIFTER AND ROTATOR

Quadra-tilt rotator with dual vacuum system and intelli-grip technology that automatically monitors vacuum and power systems.

- Automatic self-testing ensures lifter is ready for use
- Color display provides critically relevant information at a glance
- Anticipates threats and alerts operator beforehand with clearly visible and audible warnings
- Battery energy gauge
- Smart power management enables lifter to work longer on a single charge
- Multiple alarm levels plainly identify the severity of hazards
- Green lift light
- Vacuum gauges, line filters and reserve tanks
- Spring-mounted vacuum pads
- Pad extension arms
- Two-action, push-button release

PRODUCT	LOAD CAPACITY	OPERATING POWER	QTY/BOX
914798760	1400 lb (635 kg)	12 V	1

Specifications:

- Load movement:
 - Manual rotation, 360° edgewise (automatic locking at each 1/4 revolution)
 - Assisted manual tilt (90° between upright and flat)
- Weight of lifter: 190 lbs (87 kg)
- Standard pad spread:
 - Min. width: 12 1/2" (318 mm)
 - Max. width: 58 11/16 (1490 mm)
 - Min. length: 47" (119 cm)
 - Max. length: 104 3/4 (2661 mm)
- Number/Size of vacuum pads: 8 Each 11" (279.4 mm) diameter (lipped pads)



1 HP ELECTRIC OIL-FREE AIR COMPRESSOR

A super-quiet trim and finishing oil-free air compressor.

- Start/Stop pressure switch
- Sturdy roll-cage design to protect pump/motor
- Sealed pump means less maintenance
- Safety relief valve
- Intake filter/silencer
- 7.5 Amp motor
- Top-mounted air Line regulator & pressure gauge are large and easy to read
- Integrated cord wrap

Application: Ideal for finish carpenters and woodworkers

PRODUCT	LENGTH	WIDTH	HEIGHT	QTY/BOX
91351010	16.5" (419 mm)	16.5" (419 mm)	14" (356 mm)	1

Specifications:

About the pump:

- Two cylinder - cast-aluminum cylinder
- Stainless steel reed valves
- Low RPM for quiet operation
- Decibel Rating: 60 dBA

About the motor:

- Horse power: 1 HP
- Pump/Motor RPM: 1700
- CFM delivered: 2.4 CFM @ 90 PSI
- Tank capacity: 2.5 Gallons
- Automatic Overload Protection
- Voltage: 115 VAC/60 Hz
- Weight: 50 lb (22.7 kg)



PILASTER STAPLER

Securely install pilasters quicker and more accurately. Easy-to-use positive positioning guide places staples perfectly every time. Uses standard 18 gauge 1/4" (6 mm) crown staples, includes inline regulator to set staples at the perfect depth.

Included:

- Carrying case
- Oil bottle
- Goggles
- Allen key
- Air coupler
- Inline regulator

PRODUCT	QTY/BOX
9145GSKV	1

Specifications:

- Max. working pressure: 70-100 psi (4.1-7 bars)
- Fastener range: 3/8" to 1 1/4" (10 to 32 mm)
- Fastener capacity: approx. 150 staples
- Air inlet: 1/4" (6 mm) NPT male plug
- Weight: 2.4 lb (1.1 kg)



FLEXIBLE AIR HOSEA WITH 1/4 INDUSTRIAL COUPLER AND PLUG

High quality technopolymer air hose with great flexibility with rubber guard at both ends to extend the life of the air hose.

- 35% lighter than rubber air hoses
- Non-marking outer cover
- Pin pricked outer cover prevents bursting
- Resistant to oils and abrasion
- Easily re-coiled/No memory

PRODUCT	LENGTH	Ø	QTY/BOX
911425	25'	1/4" (6 mm)	1
911450	50'		
913850		3/8" (10 mm)	

Specifications:

- Max. working pressure: 300 psi (20 bar)
- Temperature range: -40°C to 65°C
- Air inlet: 1/4"



1
SCREWS
AND
FASTENERS

2
FURNITURE
EQUIPMENT

3
HINGES

4
SLIDES

5
CASTERS
AND LEGS

6
KITCHEN
SOLUTIONS

7
CLOSET
SOLUTIONS

8
LIGHTING
SOLUTIONS

9
SINKS
AND
FAUCETS

10
OFFICE

11
SLIDING
DOORS

12
GLASS
HARDWARE

13
PANELS
AND
SURFACES

14
EDGE-
BANDING

15
CABINET
DOORS
AND
DRAWERS

16
CORBELS
AND FLOOR
REGISTERS

17
GLUES,
SILICONES,
CAULK AND
INSULATING

18
TOOLS
AND
SECURITY

19
FINISHING
PRODUCTS
AND SHOP
SUPPLIES

20
COMMERCIAL
DISPLAY
HARDWARE

21
MOLDING,
RAILING AND
BATHROOM
HARDWARE

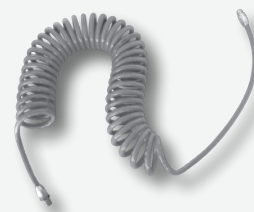
RECOIL AIR HOSE

Polyurethane Recoil Hose retains its self-coiling properties and stores itself when finished.

- Excellent memory, flexibility and kink resistance
- Lightweight: 25% lighter than rubber
- Superior elasticity and flexibility to nylon hose
- Straight 20" (508 mm) and 4" (102 mm) tails for tangle-free tool operation
- Highly abrasion resistant and non-marking
- Reusable heavy-duty nickel plated brass fittings at both ends
- Dependable, leak-tight seal and resistant to loosening caused by vibration
- Nickel plated brass construction
- Swivel fitting at supply connection allows maximum directional flexibility
- Rigid fitting at tool end to ensure a safer connection and better vibration resistance
- Good resistance in presence of oil

Specifications:

- Max. working pressure: 132 psi (9 bar) at 24°C
- Temperature range: -20°C to 70°C
- Durometer: Shore A 98
- Air inlet: 1/4" NPT



PRODUCT	LENGTH	HOSE Ø	QTY/BOX
9101425	25' (7.62 m)	1/4" (6 mm)	1

CAULKING TUBE SAVER

Caulking tube plug saver that prevents caulking tubes from drying out. Simply fill the tube with water and place open caulking tube down into the Sealant Saver tube.

- Creates an airtight seal that prevents caulk or silicone from drying out
- Easily mounts with screws to any surface

PRODUCT	QTY/BOX
916950	1



8" CABLE STRIPPER

- Built-in wire cutter and looping holes
- Strips 12/2 and 14/2 NM; #12 and #14 AWG wires
- Cuts 8-32 and M4 bolts to size and leaves perfect lead thread
- Convenient serrated plier nose jaws to bend, shape, or pull wire
- Comfortable handles
- Tough steel construction
- Non-insulated
- Spring loaded for self opening
- Locking pawl for safe storage

PRODUCT	QTY/BOX
991214	1



CENTER CUT BOLT CUTTER

18" center cut bolt cutter with screw-type adjustment for blade gap and alignment.

- PowerLink technology for superior cutting power
- Double compound cutting action
- Precision engineered induction hardened center cut blades
- Heat treated for wear resistance and long cutting life
- Tubular steel handles for ultimate strength and cutting support
- Screw-type adjustment for blade gap and alignment
- Maximum hardness of material to be cut: Brinell 455/Rockwell C48

NEVER use cutters on energized circuits, wire, or cable!

PRODUCT	QTY/BOX
910090MCD	1



SWAGING TOOL

25" swaging tool for crimping cable ferrules and stops.

- Includes sizes 1/16", 3/32", 1/8", 5/32", and 3/16" (1.6 mm, 2.4 mm, 3.2 mm, 3.9 mm and 4.7 mm)
- Strap cuts wire rope to 1/4" (6 mm)

NEVER use cutters on energized circuits, wire, or cable!

PRODUCT	QTY/BOX
910190NSL	1



SHEAR TYPE CABLE CUTTER FOR WIRE ROPE

14" (356 mm) shear type cable cutter for wire rope up to 1/4" (6 mm).

- Cuts wire rope with minimal distortion
- Toggle joints turn 50 lb (22.7 kg) hand pressure to 4000 lb (1814 kg) cutting pressure
- Screw-type adjustment realigns edges
- Notched, shear-cut blades hold and lock cable in cutting position
- Cuts steel cable, coarse or fine stranded cable with minimal distortion

NEVER use cutters on energized circuits, wire, or cable!

PRODUCT	QTY/BOX
911490MTN	1



CABLE-CUTTING PLIERS

Top-quality, pocket-size cutter for 3/16" (5 mm) hard wire rope or cable, and 1/4" (6 mm) soft wire rope or cable, piano wire and for cutting railing stainless steel cable.

PRODUCT	QTY/BOX
910690TN	1

Suggested product(s):

PRODUCT	DESCRIPTION
HR13790000312	Stainless steel railing cable
HR13790005312	
HR13790005312	
HR13790005312	



1
SCREWS
AND
FASTENERS

2
FURNITURE
EQUIPMENT

3
HINGES

4
SLIDES

5
CASTERS
AND LEGS

6
KITCHEN
SOLUTIONS

7
CLOSET
SOLUTIONS

8
LIGHTING
SOLUTIONS

9
SINKS
AND
FAUCETS

10
OFFICE

11
SLIDING
DOORS

12
GLASS
HARDWARE

13
PANELS
AND
SURFACES

14
EDGE-
BANDING

15
CABINET
DOORS
AND
DRAWERS

16
CORBELS
AND FLOOR
REGISTERS

17
GLUES,
SILICONES,
CAULK AND
INSULATING

18
TOOLS
AND
SECURITY

19
FINISHING
PRODUCTS
AND SHOP
SUPPLIES

20
COMMERCIAL
DISPLAY
HARDWARE

21
MOLDING,
RAILING AND
BATHROOM
HARDWARE

DRAWER FRONT CLAMP

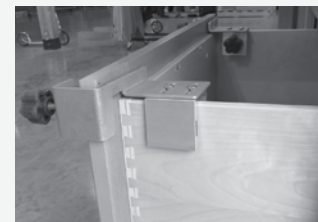
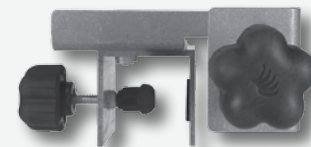
These drawer front clamps provide accurate drawer front installation every time. Simply place the clamps on the drawers, clamp, and adjust for the perfect alignment. The dual clamping allows any user to easily adjust a drawer front in seconds.

- Quick and easy to align and install
- Dual clamping pressure
- Easy turn adjustment knobs

Application: For cabinet makers, kitchens, offices and bathrooms

Sold in pairs (left and right)

PRODUCT	QTY/BOX
DRAWERCLAMP	1



STRIPLOX™ STARTER KIT

Striplox makes every unique joining application streamlined and concealed. Made from environmentally friendly, durable, heat stabilized glass reinforced nylon.

Application: For use on solid timber, MDF, composite panels, aluminium features, balsa wood, and more

- 43 piece set
- Comes with carry case
- Simple to use, fully adjustable and highly customisable

Included:

- Striplox™ Pro 55 (422205590) x 4
- Striplox™ Pro 23 (422202390) x 4
- Striplox™ Clip 50 (422205090) x 4
- Striplox™ 90D 98 mm (422209030) x 4
- Striplox™ Mini 60 mm (422206090) x 4
- Striplox™ Mini 120 mm (422212090) x 4
- Striplox™ Mega-Lox 241 mm/9.5"3/8" (422224190) x 4
- Striplox™ 180D 114 mm/4" (422218090) x 2
- Striplox™ Griplox No.20 Biscuits (422202090) x 10
- Striplox™ Pro 55 jig (4222055) x 1
- Striplox™ Clip 50 jig (4222050) x 1
- Striplox™ Pro 23 jig (4222023) x1
- Carry case x 1

PRODUCT	QTY/BOX
422202SK	1



STRIPLOX™ CLEAR MARK-OUT TEMPLATE

The Striplox™ Mark-Out Template speeds up the manufacturing processes by enabling the easy fitment of the Striplox™ range of joining solutions. The tough and durable clear plastic template features center points, markings, slot guides and can be used as a 3 mm packer for the following Striplox™ products:

- Striplox™ Pro 55 Concealed Connector (422205590)
- Striplox™ Pro 23 Concealed Connector (422202390)
- Striplox™ Clip 50 Connector (422205090)
- Striplox™ Mini 60 Invisible Joiner (422206090)
- Striplox™ Mini 120 Invisible Joiner (422212090)
- Striplox™ 90D Right Angle Joiner (422209090)
- Striplox™ 180D Joiner (422218090)

PRODUCT	QTY/BOX
4222001	1



STRIPLOX™ ROUTER BITS

Tungsten Carbide router bits produce an accurate and reliable positioning slot or cavity to suite the assembly of Striplox™ connectors.

PRODUCT	MATERIAL	CUTTING Ø	SHANK Ø	OVERALL LENGTH	CUT DEPTH	QTY/BOX
4222007	Tungsten Carbide	9/32" (7 mm)	1/4" (6 mm)	2 3/8" (60 mm)	25/32" (20 mm)	1
4222038	Tungsten Carbide	3/8" (10 mm)				

Suggested product(s):

PRODUCT	DESCRIPTION
422206090	Striplox™ Mini 60 invisible joiner
422212090	Striplox™ Mini 120 invisible joiner
422202SK	Striplox™ starter kit



STRIPLOX™ JIGS

The Striplox™ Jigs aid in the installation saving time during fitment.

Easily identifiable in red with hardened centre points in both components to mark all common substrates allowing for fast and efficient mounting of the Striplox™ products on the job site.

Sold by pair

PRODUCT	DESCRIPTION	QTY/BOX
4222023	Striplox™ Pro 23 Jig	48
4222050	Striplox™ Clip 50 Jig	
4222055	Striplox™ Pro 55 Jig	

Suggested product(s):

PRODUCT	DESCRIPTION
422202390	Striplox™ Pro 23 concealed connector
422205090	Striplox™ Clip 50 connector
422205590	Striplox™ Pro 55 concealed connector



HEAVY-DUTY ALUMINUM BOX BEAM LEVELS

- Aluminum box beam frame for durability
- Precision milled edge ensures frame accuracy
- Solid block acrylic vials won't fog, leak or break
- Ergonomic hand grips
- Anti-slip/anti-shock removable end caps protect the frame

PRODUCT	LENGTH	QTY/BOX
91260140	24" (610 mm)	5
New! 91260143	72" (1828 mm)	8



FOLDING HAND DOLLY

- Top handle bar folds down for traveling and tight spaces
- Takes only seconds to open and close
- Solid rubber wheels

PRODUCT	QTY/BOX
9129300	1

Specifications:

- Load capacity: 661 lb (300 kg)
- Measurements (L x W x H):
35 7/16" x 23 5/8" x 34 1/4"
(900 x 600 x 870 mm)
- Caster size: 13 cm (D)



"CHEM-PRO" SAFETY GOGGLES

- Soft, lightweight PVC frame
- 4 vents provide indirect ventilation
- Neoprene strap for better resistance to solvents and chemicals
- Lenses are protected with anti-fog, anti-static, anti-UV, anti-scratch coating
- CSA Z94.3-7 certified and meets and/or exceeds ANSI Z87.1 requirements

Sold by unit

PRODUCT	COLOR	QTY/BOX
DNEP30	Clear/Green	12



POLYURETHANE DIPPED ON INDUSTRIAL CUT-RESISTANT GLOVES

- Polyurethane dipped palm
- Salt and pepper Industrial cut resistant yarn liner
- Cut Protection Level 5

Sold by pair

PRODUCT	SIZE	QTY/BOX
D1261M	Medium	72
D1261L	Large	
D1261XL	X-Large	

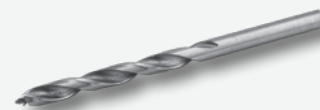


BRAD POINT TREATED HIGH SPEED STEEL DRILL BIT

Brad Point drill bits are the bits of choice for precision wood cutting. They overcome the tendency to walk at the start of a hole and reduce tear-out at the perimeter of the hole.

- Made from high speed steel (HSS)
- Fully ground and polished to provide superior chip clearance

PRODUCT	SHANK Ø	BIT LENGTH	DRILLING Ø	QTY/BOX
91156061175	5 mm	85 mm	5 mm	5



Suggested product(s):

PRODUCT	DESCRIPTION
9125TP1934	Jig system for handles and knobs
7001010	Assembly clip for aluminum profiles (2 pieces)
9125TP1935	Basic jig system and line boring extensions
AT606117	Brad point treated steel drill bit