

## WINE PEGS

Wall-mounted wine pegs are sold in modular systems for professional trades, interior designers and decorators, as well as homeowners. Add a modern look and high-quality finish to your wine cellar or wall.

- Freedom to design a cellar or wall to your exact specifications
- Combine racking systems to meet individual needs
- Easy to install
- High-quality finish
- Customizable configurations
- Silicone O-Rings provide no-slip stability
- No visible bolts
- Pre-oxidized aluminum

**Application:** Can be installed on panels made of acrylic, MDF, metal, stone and wood



## BETA BLOC WINE PEGS

Beta Bloc Wine Pegs have a wider diameter, allowing for two bottles to share the same rod and creating a more dense design. These thicker pegs require more space to install but reduce the amount of rods needed, meaning three bottles can be installed on four pegs instead of six pegs.

- Standard spacing for bottles up to 13 1/2" (343 mm) long and 3 3/4" (95 mm) in diameter
- Can hold 4 bottles with 2 pairs

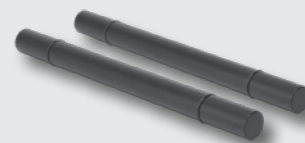
**Included:** 1 pair of aluminum pegs, 4 Silicone O-Rings

Sold by pair

PRODUCT	FINISH	LENGHT	DIAMETER	NUMBER OF BOTTLES	QTY/BOX
WPBB10	Brushed Aluminum	7" (178 mm)	1" (25 mm)	1	25
WPBB900	Matte Black				

**Suggested product(s):**

PRODUCT	DESCRIPTION
WPR486100	Wine Peg O-Rings
WPW11810	Washers for drywall installation
WPAK114900	Allen key screws for spacers



## XY WINE PEGS

XY Wine Pegs offer the highest capacity of individual bottle storage available. The sleek, solid aluminum rods make for refined yet functional cellars. Each bottle is stored on two rods perpendicular to the wall, with the cork facing outwards.

Standard spacing for bottles up to 13 1/2" (343 mm) long and 3 3/4" (95 mm) in diameter.

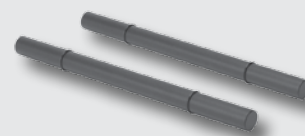
**Included:** 1 pair of aluminum pegs, 4 Silicone O-Rings

Sold by pair

PRODUCT	FINISH	LENGHT	DIAMETER	NUMBER OF BOTTLES	QTY/BOX
WPXY10	Brushed Aluminum	7" (178 mm)	1/2" (13 mm)	1	90
WPXY900	Matte Black				

**Suggested product(s):**

PRODUCT	DESCRIPTION
WPR486100	Wine Peg O-Rings
WPW11810	Washers for drywall installation
WPAK114900	Allen key screws for spacers



## NEK RITE WINE PEGS

Made of solid aluminum and are designed to hold the bottle at both the neck and the punt.

- Perfect for wine bottle displays with limited available depth. Each pair holds a single bottle parallel to the wall which is perfect for displaying labels
- Ideal for growing collections while still being able to display your best bottles. Each pair holds two bottles horizontally
- Perfect balance between storage capacity and label displaying. Able to hold three bottles per pair
- Standard spacing for bottles up to 13 1/2" (343 mm) long and 3 3/4" (95 mm) in diameter

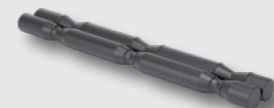
**Included:** 1 pair of aluminum pegs, 4 Silicone O-Rings

Sold by pair

PRODUCT	FINISH	LENGHT	DIAMETER	NUMBER OF BOTTLES	QTY/BOX
WPNR110	Brushed Aluminum	3 5/8" (92 mm)	3/4" (19 mm)	1	90
WPNR1900	Matte Black				
WPNR210	Brushed Aluminum	7 1/8" (181 mm)		2	45
WPNR2900	Matte Black				
WPNR310	Brushed Aluminum	10 7/8" (276 mm)		3	30
WPNR3900	Matte Black				

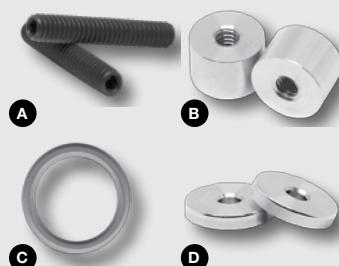
**Suggested product(s):**

PRODUCT	DESCRIPTION
WPR486100	Wine Peg O-Rings
WPW11810	Washers for drywall installation
WPAK114900	Allen key screws for spacers



## WINE PEG HARDWARE AND ACCESSORIES

REF.	PRODUCT	DESCRIPTION	FINISH	Ø	LENGHT	QTY/BOX
A	WPAK114900	Allen Key screws to install wine pegs spacers. • Sold in bag of 2 screws	Matte Black	1/4" (6.35 mm)	1 1/4" (32 mm)	100
	WPAK112900				1 1/2" (38 mm)	
	WPAK2900				2" (51 mm)	
	WPAK214900				2 1/4" (60 mm)	
B	WPS3810	Spacers to install wine pegs on heavy or textured panel installation • Sold in bag of 2 spacers	Brushed Aluminum	3/4" (19 mm)	3/8" (9 mm)	
	WPS1210				1/2" (13 mm)	
	WPS0110				1" (25 mm)	
C	WPR484100	Replacement silicone O-Rings for wine pegs • Sold in bag of 4 O-Rings	Gray	3/8" (10 mm)	-	
	WPR484900		Matte Black		-	
	WPR486100		Gray	5/8" (16 mm)	-	
	WPR486900		Matte Black		-	
REF.	PRODUCT	DESCRIPTION	FINISH	Ø	HEIGHT	QTY/BOX
D	WPW11810	Washers to install wine pegs to drywall • Sold in bag of 2 washers	Brushed Aluminum	1 1/8" (29 mm)	1/8" (3 mm)	100



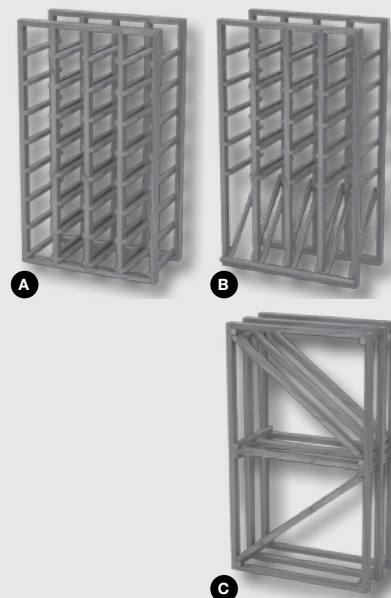
## WOOD WINE CELLAR RACKS

- Made from torrefied aspen poplar wood (against warping, cracking, mold and fungus)
- For standard 750 ml bottles
- Very robust
- Easy and ready to assemble - no cutting required
- Species: Torrefied trembling aspen (anti-moisture)
- Can be painted with a water-based product

REF.	PRODUCT	DESCRIPTION	HEIGHT	WIDTH	NUMBER OF BOTTLES	QTY/BOX
A	CCID323051	Classic racks for standard 750 ml bottles	30" (762 mm)	17 1/2" (444 mm)	32	1
	CCID484551		45" (1143 mm)		48	
	CCID643051		30" (762 mm)	35" (889 mm)	64	
	CCID964551		45" (1143 mm)		96	
B	CCIDI243051	Classic angled rack for standard 750 ml bottles	30" (762 mm)	17 1/2" (444 mm)	24	1
C	CDIA363051	Classic diamond racks for standard 750 ml, Magnum and oversized bottles	30" (762 mm)	17 1/2" (444 mm)	30	1
	CDIA544551		45" (1143 mm)		45	

Suggested product(s):

PRODUCT	DESCRIPTION
1081220109	LED folio 12V
MJ009651	Universal joint molding
MF009651	Crosspiece without grooves



## CORBELS

- Crafted after traditional styles
- Can be used on mantels, range hoods and more
- Material: Unfinished wood

Included: 1 corbel with 2 fasteners on the back

REF.	PRODUCT	DESCRIPTION	SPECIES	HEIGHT	WIDTH	DEPTH	QTY/BOX
A	15609815	Acanthus corbel #98	Maple	12" (305 mm)	5" (127 mm)	4 1/2" (114 mm)	1
	15609825		Red Oak				
	15609803		Yellow Birch				
B	15610715	Classic corbel #107	Maple	6 1/2" (165 mm)	3 3/4" (95 mm)	3 1/2" (89 mm)	1
	15610725		Red Oak				
	15610703		Yellow Birch				
C	15612515	Classic corbel #125	Maple	4 1/2" (114 mm)	3" (76 mm)	1 3/4" (44 mm)	1
	15612525		Red Oak				
	15612503		Yellow Birch				



## NOTES