

SLIDING STORAGE

Sliding wire basket for storage of sweaters, stockings, or other small items.

- Wire basket provides adequate ventilation for clothes
- Easy to install, the rails are easily screwed under the shelf, then insert the basket
- The basket comes with the rails
- Elegant gray finish that goes perfectly with all the other products in the Panasonic product line
- Convenient to store sweaters, stockings, underwear, or any other items

PRODUCT	FINISH	PRODUCT DIMENSIONS			QTY/BOX
		WIDTH	HEIGHT	DEPTH	
175580910	Dark Gray	22 5/16" (567 mm)	3 3/8" (85 mm)	10 5/8" (270 mm)	1



SHELF KITS

These aluminum standards are the basis of the structure. They allow the addition of options sold separately such as ABS shelf, wardrobe rod, valet rod and sliding basket.

- Sold in sets of 2 or 3 standards, which allows to have the number of desired sections
- Easy to install, simply screw on the wall
- An ABS silver gray strip is included to be placed on the front of the standard for a clean finish
- Flexible, it allows height adjustment of accessories
- Attached to the wall, the kit frees space on the floor for additional storage

PRODUCT	FINISH	PRODUCT DIMENSIONS			QTY/BOX
		WIDTH	HEIGHT	DEPTH	
17520010	Aluminum	1" (25 mm)	72 13/16" (1850 mm)	1" (25 mm)	2
17530010					3



SUPPORTS FOR WOOD SHELF

Sturdy steel supports designed specifically for use with the valet rod, sliding basket, or clothing rod.

PRODUCT	FINISH	QTY/BOX
17533190	Black	1 pair

Suggested product(s):

PRODUCT	DESCRIPTION
175330140	Valet rod
175580910	Sliding storage
17567510	Closet rod



ABS SHELF SUPPORTS

These brackets, delivered in pairs, hold the ABS shelves firmly in place. Their shape gives a uniform finish that provides simple elegance.

- Easy to install on the uprights with its side clips
- Retainers are included to stabilize and hold the shelf securely on the upright
- Elegant black finish that blends perfectly with shelf color
- Available in pairs or in packs of 3 pairs
- Weight capacity of 4 kg (9 lb) per shelf



PRODUCT	FINISH	PRODUCT DIMENSIONS			QTY/BOX
		WIDTH	HEIGHT	DEPTH	
17558190	Black	1" (25 mm)	1" (25 mm)	11 13/16" (300 mm)	1
17558390					3

ABS RESIN SHELVES

- Suitable for storing any type of items including shoes
- Made of non-polyvinyl chloride resin that is easy to clean
- Installs and removes easily

PRODUCT	FINISH	PRODUCT DIMENSIONS			QTY/BOX
		WIDTH	HEIGHT	DEPTH	
175726910	Dark Gray	28 9/16" (726 mm)	13/16" (21 mm)	11" (280 mm)	1
175729910					9



LOGO I SYSTEM

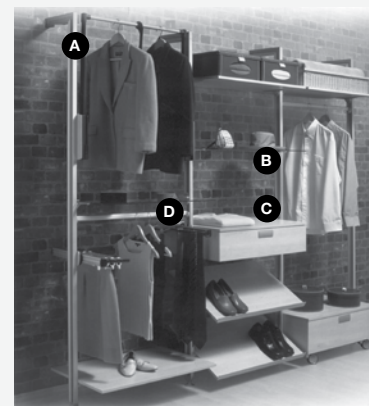
The versatility of Logo allows you to create a wide range of designs for closet, home entertainment, office, kitchen or retail displays.

This versatile system consists of solid aluminum extrusions that can be mounted from floor to ceiling or from floor to wall. Logo offers a range of brackets to mount shelves, case goods or closet rods. Adapters are also available for a great selection of closet accessories.

Different supports are available for any configuration needed :

- Closet rod
- Wood and/or glass shelves
- Complete drawer/cabinet
- Pull-out closet fit
- Pull-out racks

Important: At least 2 profiles are required to build a base unit section
Maximum weight capacity of 15kg (33 lbs) per pair of supports



LOGO I PROFILE FOR CEILING INSTALLATION

- Aluminum extrusion, straight
- Connector and leveler included

PRODUCT	FINISH	WIDTH	HEIGHT	DEPTH	QTY/BOX
871503010	Aluminum	1" (25 mm)	118 1/8" (3000 mm)	2 3/16" (55 mm)	1



A - LOGO I PROFILE FOR WALL FIXING INSTALLATION

- Aluminum extrusion, 90 degrees
- Connector and leveler included

PRODUCT	FINISH	WIDTH	HEIGHT	DEPTH	QTY/BOX
871532610	Aluminum	10 13/16" (275 mm)	102 3/8" (2600 mm)	2 3/16" (55 mm)	1



B - LOGO I SHELF SUPPORT

PRODUCT	FINISH	DESCRIPTION	WIDTH	HEIGHT	DEPTH	QTY/BOX
64019210	Aluminum	For glass shelf	1 9/16" (40 mm)	1 31/32" (50 mm)	8 1/4" (210 mm)	1
715450010		For wood shelf			7 9/16" (192 mm)	



C - LOGO I DRAWER/CABINET SUPPORT

Application: sweaters, t-shirts, underwears, socks, gloves and hats

PRODUCT	FINISH	WIDTH	HEIGHT	DEPTH	QTY/BOX
715840180	Aluminum	1 21/32" (42 mm)	2 11/16" (68 mm)	2 3/16" (55 mm)	1



LOGO I SYSTEM

D - LOGO I SUPPORT FOR OVAL RODS

PRODUCT	FINISH	WIDTH	HEIGHT	DEPTH	QTY/BOX
715915180	Aluminum	1 13/16" (46 mm)	1 7/8" (48 mm)	1 7/8" (48 mm)	1



LOGO I PULL-OUT WARDROBE LIFT ADAPTER

PRODUCT	FINISH	WIDTH	HEIGHT	DEPTH	QTY/BOX
716800180	Aluminum	5 1/2" (140 mm)	10 1/4" (260 mm)	5 11/16" (145 mm)	1



UNO PULL-OUT WARDROBE LIFTS

Pull-out wardrobe lift with smooth damping action.

Application: jackets, dresses, shirts, clothes hanging

PRODUCT	FINISH	PRODUCT DIMENSIONS - HEIGHT	MIN. INTERIOR DIMENSIONS REQUIRED		LOAD RATING	QTY/ BOX
			WIDTH	DEPTH		
938051100	Aluminum	29 1/2" (750 mm)	22 1/8" to 30 1/4" (562 to 768 mm)	20 1/4" (515 mm)	15.4 lb (7 kg)	3
938052100			30" to 42 1/16" (762 to 1068 mm)		26.4 lb (12 kg)	



SHELF AND ROD SUPPORTS

PRODUCT	FINISH	ROD Ø	PRODUCT DIMENSIONS			MIN. INTERIOR DIMENSIONS REQUIRED - DEPTH	QTY/BOX
			WIDTH	HEIGHT	DEPTH		
119430	White	1 1/4" (32 mm)	1" (25 mm)	8" (203 mm)	11" (279 mm)	12 to 14" (305 to 356 mm)	1
119530							

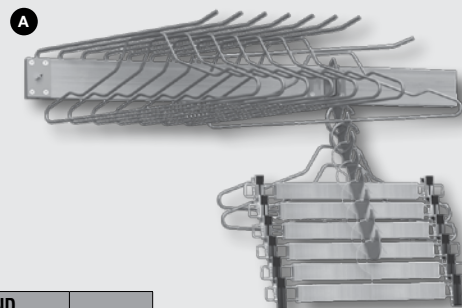


WALL-OUT SYSTEM

Customize your storage space with the Wall-Out system for narrow closets. This innovative concept requires only 8" (203 mm) deep.

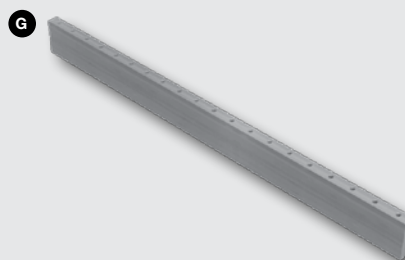
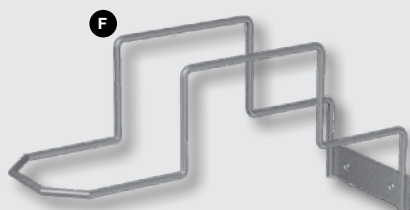
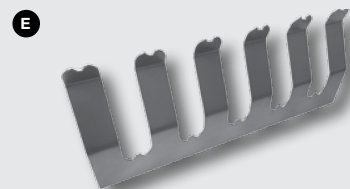
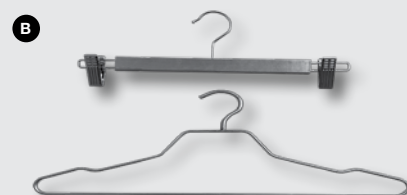
The WALL-OUT system offers more than just an alternative to storage, it's a new way to store your clothes.

- Ergonomic storage system
- Easy installation: attaches directly to the wall
- Quick storage and visibility of clothing
- Optimization of storage space
- Considerable space saving: 550 garments in less than 13 square feet
- Easy accessibility for people with reduced mobility



REF.	PRODUCT	DESCRIPTION	FINISH	LENGHT	HEIGHT	NUMBER OF HANGERS AND SUPPORT INCLUDED	QTY/BOX
A	53530100	«Wall-Out» Complete Kit	Silver	30" (762 mm)	-	8 #53510100 hangers, 2 regular hangers, and 6 clip holders	1
	53548100			48" (1219 mm)		20 #53510100 hangers, 2 regular hangers, and 6 clamp holders	
B	53510100	Hangers Set		18" (457 mm)		50 hangers	1*
	53529100					4 regular hangers 4 clip hangers	
C	53520100	Friction Plate		1 1/2" (38 mm)		-	1
D	53521100	Tilting Support		12" (305 mm)		-	
	53523100			13 5/8" (346 mm)		-	
	53522100			14 5/8" (371 mm)		-	
	53524100			14 7/8" (378 mm)		-	
E	53526100	Shoe Storage Support		24" (610 mm)	10 1/8" (257 mm)	-	
	53525100			70 3/4" (1797 mm)	-		
F	53527100	Hat Support		5 3/4" (146 mm)	3 1/2" (89 mm)	-	
	53528100			6 5/8" (169 mm)	5 5/8" (143 mm)	-	
REF.	PRODUCT	DESCRIPTION	FINISH	LENGHT	INCREMENT		QTY/BOX
G	535810150	Mounting Bars	Maple	8" (203 mm)	1" (25 mm)	-	1
	535815150				1 1/2" (38 mm)	-	

*Sold by box



ROUND CLOSET ROD SUPPORTS - 1" (25 MM)

REF.	PRODUCT	FINISH	MOUNTING	TYPE	QTY/BOX
A	3100140	Chrome	Screw Mount	Closed	50 pairs
	3200140				50 pairs
B	128WV	White	Screw Mount	Open	200 pairs
	128XV	Zinc			200 pairs
C	12BR*	Brass	Screw Mount	Open	50 pairs*
	12BV	Brass			50 pairs
D	2210002140	Chrome	Screw Mount	Open	50
E	2210012140	Chrome	Outside Screw Mount	Closed	50
	3625140	Chrome			100 pairs
F	3527140	Chrome	Inside Screw Mount	Closed	100 pairs
G	3201140	Chrome	Screw Mount	Central	10
-	352730	White	Inside Screw Mount	Closed	50 pairs
	642140	Chrome	Screw Mount	Open	1
	652140	Chrome	Screw Mount	Closed	1

*Min. 5


ROUND CLOSET RODS

PRODUCT	FINISH	GAUGE	Ø	LENGHT	QTY/BOX
010012140	Chrome	16	1" (25 mm)	12' (3.6 m)	5
43103140	Chrome	18	1" (25 mm)	3' (914 mm)	10
43104140				4' (1.2 m)	10
43106140				6' (1.8 m)	10
43108140					10
4310830	White	18	1" (25 mm)	6' (1.8 m)	10
770196	Chrome	12	1 1/16" (27 mm)	8' (2.4 m)	1
EP66072	Chrome	14	1 1/16" (27 mm)	6' (1.8 m)	10
122106140					6
122110140	Chrome	14	1 1/16" (27 mm)	10' (3 m)	1
EP66144	Chrome	14	1 1/16" (27 mm)	12' (3.6 m)	1
010508140	Chrome	16	1 1/4" (32 mm)	8' (2.4 m)	5
010512140				12' (3.6 m)	5
770596	Chrome	12	1 5/16" (33 mm)	8' (2.4 m)	1
122206140	Chrome	14	1 5/16" (33 mm)	6' (1.8 m)	6
122210140				10' (3 m)	5
49516144CV				12' (3.6 m)	

*Min. 5



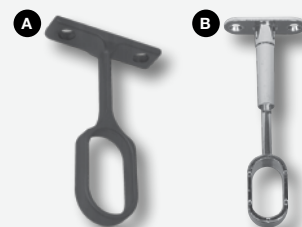
OPEN OVAL CLOSET ROD SUPPORTS

PRODUCT	FINISH	WIDTH	HEIGHT	MOUNTING	QTY/BOX
7837140	Chrome	5/8" (16 mm)	1 3/4" (45 mm)	Screw Mount	5000
7837180	Nickel				1000
3550140	Chrome	3/4" (19 mm)	1 3/4" (45 mm)		100 pairs
83390510	Aluminum	25/32" (20 mm)	1 3/4" (45 mm)		1000
7837130	Brass				
2123150140	Chrome	25/32" (20 mm)	1 3/4" (45 mm)		500
2123150900	Matte Black				
2123150160	Matte Brass				
2123150174	Matte Chrome				
2123150184	Matte Nickel				
21231500RB	Oil-Rubbed Bronze				



CENTRAL OVAL CLOSET ROD SUPPORTS

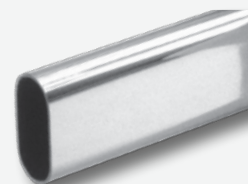
REF.	PRODUCT	FINISH	WIDTH	HEIGHT	MOUNTING	QTY/BOX
A	2333121060	Brown	15/32" (12 mm)	1 3/16" (30 mm)	Screw Mount	200
	3661140	Chrome	1 3/4" (44 mm)	2 15/16" (75 mm)		5
	2133150140	Chrome				500
	2133150900	Matte Black				
	2133150160	Matte Brass				
	2133150174	Matte Chrome				
	2133150184	Matte Nickel				
	21331500RB	Oil-Rubbed Bronze				
B	15104140	Chrome	1 3/4" (44 mm)	4 5/16" (110 mm)		25



OVAL RODS

We recommend using a central support for all lengths over 24" (610 mm)

	PRODUCT	FINISH	GAUGE	ROD THICKNESS	PRODUCT DIMENSIONS			QTY/BOX
					WIDTH	HEIGHT	LENGTH	
New!	43003140	Chrome	18	1/16" (1.2 mm)	19/32" (15 mm)	1-3/16" (30 mm)	3" (914 mm)	10
	43004140						4" (1219 mm)	
	43006140						6" (1829 mm)	
	D030201210	Satin Aluminum	18	1/16" (1.2 mm)	19/32" (15 mm)	1-3/16" (30 mm)	12" (3658 mm)	10
	1703140	Chrome	22	1/32" (0.8 mm)	19/32" (15 mm)	1-3/16" (30 mm)	118 1/8" (3 m)	36



For closet rod #D030201210, use supports #715915180 for application with LOGO profiles #871532610 or #871503010.

DECORATIVE VALET RODS

Decorative valet rod with 8 1/2" (216 mm) extension.

PRODUCT	FINISH	PRODUCT DIMENSIONS			OUTSIDE Ø	QTY/BOX
		WIDTH	HEIGHT	DEPTH		
28012130	Brass	1" (25 mm)	1 3/4" (44 mm)	12" (305 mm)	1/2" (13 mm)	48
28012140	Chrome					
28012160	Matte Brass					
28012174	Matte Chrome					
28012184	Matte Nickel					
280120RB	Oil-Rubbed Bronze					



DECORATIVE BELTS AND TIES RACKS

SQUARE BELT RACKS

PRODUCT	FINISH	PRODUCT DIMENSIONS			MIN. INTERIOR DIMENSIONS REQUIRED - DEPTH	QTY/BOX
		WIDTH	HEIGHT	DEPTH		
29212130	Brass	3" (76 mm)	2 1/2" (64 mm)	11 1/4" (286 mm)	12" (305 mm)	40
29212140	Chrome					
29212160	Matte Brass					
29212174	Matte Chrome					
29212184	Matte Nickel					
292120RB	Oil-Rubbed Bronze	3" (76 mm)	2 1/2" (64 mm)	13 1/4" (337 mm)	14" (356 mm)	40
29314130	Brass					
29314140	Chrome					
29314174	Matte Chrome					
29314184	Matte Nickel					



OVAL BELT RACKS

PRODUCT	FINISH	NUMBER OF HOOKS	PRODUCT DIMENSIONS			QTY/BOX
			WIDTH	HEIGHT	DEPTH	
49212130	Brass	7	2" (51 mm)	2 1/2" (64 mm)	12" (305 mm)	40
49212140	Chrome					
49212174	Matte Chrome					
49212184	Matte Nickel					
492120RB	Oil-Rubbed Bronze					
49314130	Brass	8	2" (51 mm)	2 1/2" (64 mm)	14" (356 mm)	32
49314140	Chrome					
49314174	Matte Chrome					
49314184	Matte Nickel					
493140RB	Oil-Rubbed Bronze					



SQUARE TIE RACKS

PRODUCT	FINISH	PRODUCT DIMENSIONS			MIN. INTERIOR DIMENSIONS REQUIRED - DEPTH	QTY/BOX
		WIDTH	HEIGHT	DEPTH		
29612130	Brass	2 1/2" (64 mm)	2 1/2" (64 mm)	11 1/4" (286 mm)	12" (305 mm)	40
29612140	Chrome					
29612160	Matte Brass					
29612174	Matte Chrome					
29612184	Matte Nickel					
296120RB	Oil-Rubbed Bronze	2 1/2" (64 mm)	2 1/2" (64 mm)	13 1/4" (337 mm)	14" (356 mm)	40
29714130	Brass					
29714140	Chrome					
29714160	Matte Brass					
29714174	Matte Chrome					
29714184	Matte Nickel					



OVAL TIE RACKS

PRODUCT	FINISH	NUMBER OF HOOKS	PRODUCT DIMENSIONS			QTY/BOX
			WIDTH	HEIGHT	DEPTH	
49612130	Brass	12	2" (51 mm)	2 1/2" (64 mm)	12" (305 mm)	40
49612140	Chrome					
49612174	Matte Chrome					
49612184	Matte Nickel					
496120RB	Oil-Rubbed Bronze					
49714130	Brass	13	2" (51 mm)	2 1/2" (64 mm)	14" (356 mm)	32
49714140	Chrome					
49714174	Matte Chrome					
49714184	Matte Nickel					
497140RB	Oil-Rubbed Bronze					



LINA PANT RACK

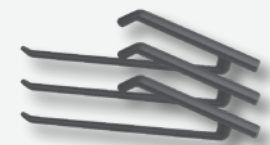
Pant rack with reversible hangers and a storage shelf. The Lina shelf system can be installed in your closet cabinet or alcove. The pant hanger at the bottom of the shelf can be turned around and becomes a "valet" when you have chosen your pants. Includes 9 hangers, but it can accommodate up to 15 hangers.

PRODUCT	FINISH	PRODUCT DIMENSIONS			MIN. INTERIOR DIMENSIONS REQUIRED - HEIGHT	QTY/BOX
		WIDTH	HEIGHT	DEPTH		
21430110	Aluminum Gray	17 5/16" (440 mm)	6 3/8" (162 mm)	20 7/8" (530 mm)	6 3/8" (162 mm)	1



SET OF 3 ADDITIONAL HANGERS FOR THE LINA SYSTEM

PRODUCT	FINISH	WIDTH	HEIGHT	DEPTH	QTY/BOX
6365110	Dark Gray	11/16" (17 mm)	3 15/16" (100 mm)	16 5/8" (423 mm)	24 sets



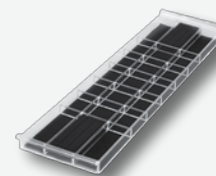
JEWELRY COMPARTMENTS

PRODUCT	FINISH	WIDTH	HEIGHT	DEPTH	QTY/BOX
11120190	Black	22" (559 mm)	2" (51 mm)	12 11/16" (322 mm)	12
17120190		28" (711 mm)			
11120270	Blue	22" (559 mm)			



SUSPENDED JEWELRY TRAYS

PRODUCT	FINISH	WIDTH	HEIGHT	DEPTH	QTY/BOX
12060690	Black	12 13/16" (325 mm)	1 3/8" (35 mm)	6 1/2" (165 mm)	12
21060690		21 3/4" (552 mm)			
21060870	Blue	21 3/4" (552 mm)			



DRAWER DIVIDERS

PRODUCT	FINISH	WIDTH	HEIGHT	QTY/BOX
14030111	Clear	14" (356 mm)	3" (76 mm)	12
14050111			5" (127 mm)	
18030111		18" (457 mm)	3" (76 mm)	
18050111			5" (127 mm)	



PARTITION HOLDERS

For 1/4" (6 mm) panels.

PRODUCT	FINISH	HEIGHT	QTY/BOX
0030160	Brown	3" (76 mm)	12 pairs
0030130	Euro White		
0050130		5" (127 mm)	

Required product(s):

PRODUCT	DESCRIPTION
14030111	Drawer Divider
18030111	



5-HOOK SUPPORTS

For 1/4" (6 mm) panels.

PRODUCT	FINISH	WIDTH	HEIGHT	DEPTH	QTY/BOX
1077140	Chrome	13 3/4"	2 1/8" (54 mm)	1 3/16" (30 mm)	200
1078140		(350 mm)	2 3/16" (55 mm)	1 1/8" (29 mm)	



PULL-OUT ALUMINUM CLOTHES RACKS

Ball-bearing slides extend 14 3/16" (360 mm).

Photos are for illustrative purposes only; note that the number of metal rods vary depending on the width of the frame.

PRODUCT	FINISH	PRODUCT DIMENSIONS			QTY/BOX
		WIDTH	HEIGHT	DEPTH	
93826010	Aluminum	22 3/16" (564 mm)	3 7/16" (87 mm)	20 1/16" (510 mm)	10
93829010		34" (864 mm)			



ALUMINUM RACKS FOR SKIRTS AND/OR PANTS

For interior height of 35-7/16" (900 mm).

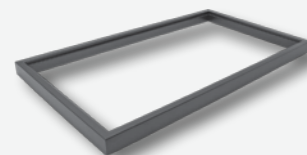
PRODUCT	FINISH	PRODUCT DIMENSIONS			MIN. INTERIOR DIMENSIONS REQUIRED			QTY/BOX
		WIDTH	HEIGHT	DEPTH	WIDTH	HEIGHT	DEPTH	
131100010	Aluminum	32 3/16" (817 mm)	25/32" (20 mm)	17 5/16" (440 mm)	35 7/16" (900 mm)	3" (76 mm)	20 11/16" (525 mm)	1
130100010						20 11/16" (525 mm)		
130136135	Bronze					20 11/16" (525 mm)		



SLIDING FRAMES FOR CABINET INTERIOR

Full-extension, soft-closing sliding closet frame. Slides included.

PRODUCT	FINISH	PRODUCT DIMENSIONS - HEIGHT	MIN. INTERIOR DIMENSIONS REQUIRED		QTY/BOX
			WIDTH	DEPTH	
130030010	Aluminum	1 11/16" (43 mm)	30" (762 mm)	21 3/4" (552 mm)	1
130030135	Bronze				



Suggested product(s):

PRODUCT	DESCRIPTION
130630010	Metal Drawers for a Cabinet Interior Width of 30" (762 mm)
130430010	Metal Drawers for a Cabinet Interior Width of 30" (762 mm)

WOOD PARTITIONS FOR 1304 DRAWERS

Wood dividers for 1304 drawers.

PRODUCT	FINISH	MIN. INTERIOR DIMENSIONS REQUIRED		QTY/BOX
		WIDTH	DEPTH	
130730010	Gray	30" (762 mm)	21 3/4" (552 mm)	1
130730032	Brown			
130736010	Gray	36" (914 mm)		
130736032	Brown			



METAL DRAWERS FOR CABINET INTERIOR

Can be fitted with an additional divider for better organization of your scarves, ties, and belts.

PRODUCT	FINISH	PRODUCT DIMENSIONS		MIN. INTERIOR DIMENSIONS REQUIRED			QTY/BOX
		HEIGHT	DEPTH	WIDTH	HEIGHT	DEPTH	
130430010	Aluminum	-	-	30" (762 mm)	3 1/4" (83 mm)	21 3/4" (552 mm)	1
130430135	Bronze						
130530010	Aluminum	-	-		4" (102 mm)		
130530135	Bronze						
130630010	Aluminum	-	-	6" (152 mm)			
130630135	Bronze						
PRODUCT	FINISH	PRODUCT DIMENSIONS		MIN. INTERIOR DIMENSIONS REQUIRED			QTY/BOX
		HEIGHT	DEPTH	WIDTH	HEIGHT	DEPTH	
130436010	Aluminum	3" (76 mm)	-	36" (914 mm)	-	21 3/4" (552 mm)	1
130436135	Bronze						
130536010	Aluminum	4" (102 mm)	-				
130536135	Bronze						
130636010	Aluminum	6" (152 mm)	-				
130636135	Bronze						
PRODUCT	FINISH	PRODUCT DIMENSIONS		MIN. INTERIOR DIMENSIONS REQUIRED			QTY/BOX
		HEIGHT	DEPTH	WIDTH	HEIGHT	DEPTH	
130400010	Aluminum	-	20 11/16" (525 mm)	32 3/16" (817 mm)	1 31/32" (50 mm)	17 5/16" (440 mm)	1
130500010					3 1/8" (80 mm)		
130600010					5 1/8" (130 mm)		

Suggested product(s):

PRODUCT	DESCRIPTION
130730010	Wood Partitions for 1304 drawers
130730032	
130736032	
130736010	
130000010	Sliding Frame for Cabinet Interior Width of 35 7/16" (900 mm)



FABRIC BASKET

Set of two washable gray fabric baskets.

PRODUCT	FINISH	PRODUCT DIMENSIONS			MIN. INTERIOR DIMENSIONS REQUIRED			QTY/BOX
		WIDTH	HEIGHT	DEPTH	WIDTH	HEIGHT	DEPTH	
130900100	Gray	17 5/16" (440 mm)	11 13/16" (300 mm)	16 1/16" (408 mm)	35 7/16" (900 mm)	15" (381 mm)	20 11/16" (525 mm)	1



RODS FOR MILANO ALUMINUM

Supports included.

PRODUCT	FINISH	OUTSIDE Ø	PRODUCT DIMENSIONS - WIDTH	MIN. INTERIOR DIMENSIONS REQUIRED - WIDTH	QTY/BOX
132130010	Aluminum	28 mm	29" (737 mm)	30" (762 mm)	50
132136010			35" (889 mm)	36" (914 mm)	
132230135	Bronze	28 mm	29" (737 mm)	30" (762 mm)	
132236135			35" (889 mm)	36" (914 mm)	



VERTIKO SYSTEM

A customizable, aesthetic and practical system.

A simple, versatile system comprised of:

- An aluminum load bearing support structure
- Brackets for cabinets, shelves, and closet rods

Attached to an existing wall, the components can be used in any combination to create:

- A walk-in closet in a bedroom
- Shelving in a home office
- An entertainment center in a living-room
- Functional pantry storage in the kitchen

The Vertiko system: useful for both residential and commercial projects.

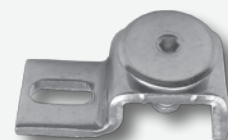
Use panels to build custom drawers and shelves. The adjustable shelf supports allow for maximum flexibility as needs change.

Highly flexible and practical, the Vertiko system can be complemented with lighting, decorative panels and decorative hardware to create simple designs with maximum style adaptable for every need.



VERTIKO WALL MOUNTING PLATE

PRODUCT	FINISH	QTY/BOX
678000010	Aluminum	20



VERTIKO MOUNTING POLE

PRODUCT	FINISH	LENGHT	QTY/BOX
678273010	Aluminum	92 7/16" (2 348 mm)	1



VERTIKO PANEL MOUNTING PLATE

PRODUCT	FINISH	QTY/BOX
678001090	Black	40



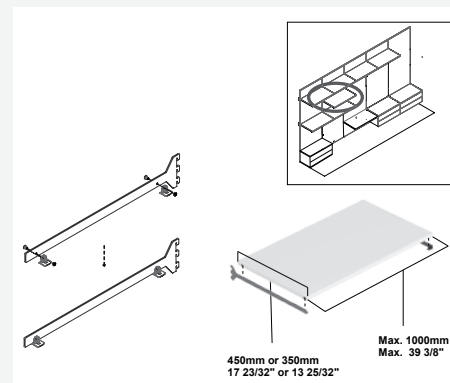
VERTIKO PRE-MOUNTING BRACKETS

PRODUCT	FINISH	SHELF THICKNESS	LENGHT	QTY/BOX
678301100	Gray	3/4" (19 mm)	15 1/4" (388 mm)	5
678299100			19 3/16" (488 mm)	
678300100		1" (25 mm)	15 1/4" (388 mm)	
678298100			19 3/16" (488 mm)	



VERTIKO WOOD SHELF BRACKETS

PRODUCT	FINISH	SHELF THICKNESS	LENGTH	QTY/BOX
6781277100	Gray	3/4" (19 mm)	15 1/4" (388 mm)	20
6781264100			19 3/16" (488 mm)	
6781275100		1" (25 mm)	15 1/4" (388 mm)	
6781265100			19 3/16" (488 mm)	



VERTIKO RECTANGULAR ROD AND BRACKETS

REF.	PRODUCT	FINISH	DESCRIPTION	PRODUCT DIMENSIONS			QTY/BOX
				LENGTH	HEIGHT	DEPTH	
A	678538100	Gray	Rod	39 3/8" (1 000 mm)	1 3/16" (30 mm)	5/16" (8 mm)	30

REF.	PRODUCT	FINISH	DESCRIPTION	TYPE	QTY/BOX
B	678446100	Gray	Bracket	Lateral	100
	678447100			Central	


1
SCREWS
AND
FASTENERS

2
FURNITURE
EQUIPMENT

3
HINGES

4
SLIDES

5
CASTERS
AND LEGS

6
KITCHEN
SOLUTIONS

7
CLOSET
SOLUTIONS

8
LIGHTING
SOLUTIONS

9
SINKS
AND
FAUCETS

10
OFFICE

11
SLIDING
DOORS

12
GLASS
HARDWARE

13
PANELS
AND
SURFACES

14
EDGE-
BANDING

15
CABINET
DOORS
AND
DRAWERS

16
CORBELS
AND FLOOR
REGISTERS

17
GLUES,
SILICONES,
CAULK AND
INSULATING

18
TOOLS
AND
SECURITY

19
FINISHING
PRODUCTS
AND SHOP
SUPPLIES

20
COMMERCIAL
DISPLAY
HARDWARE

21
MOLDING,
RAILING AND
BATHROOM
HARDWARE

FIT ART MODULAR SYSTEM

The new generation of modular furnishing systems that inspires creations built with design in mind!

There is room to be creative with the perfect organization system for furniture accessories, personalized walk-in closets, office furniture, wall units and partitions.

Whatever your needs are, the modular furnishing system offers you the possibility to create your own customized space management. Next stop: the perfect organization of space.

Vertical standards

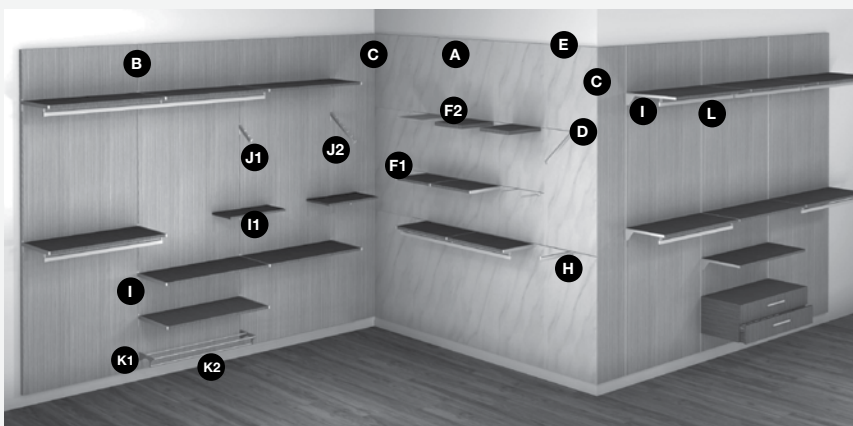
- A. Vertical concealed standard for decorative panelling
- B. Vertical double-slotted standard
- C. Vertical finishing standard

Horizontal profiles

- D. Horizontal customizable profile
- E. Horizontal finishing profile

Supports for customizable horizontal profiles

- F. Supports for wood shelves
- G. Support for glass shelves (not shown)
- H. Supports for hangers



Supports for vertical double-slotted standards

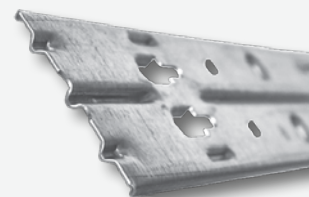
- I. Supports for wood shelves
- J. Supports for hangers
- K. Shoe rack
- L. Clothes hanging rail

A - VERTICAL CONCEALED STANDARD FOR DECORATIVE PANELLING

Designed so the profile is completely recessed onto the wall and only the decorative panel is visible, which makes the panel appear to float.

Minimalist design creating a decorative panel which appears to be completely frameless.

- The invisible and economical profile that speeds up paneling
- Fast assembly for removable wall paneling
- For any kind of panel and thickness

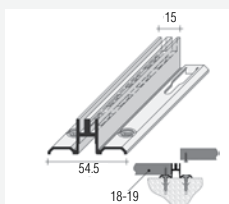
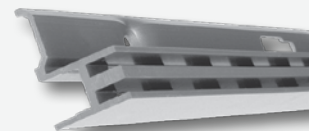


PRODUCT	FINISH	WIDTH	LENGHT	QTY/BOX
62NB028862G	Zinc	2 3/8" (60 mm)	113 1/2" (2 883 mm)	50

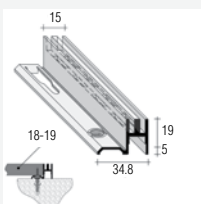
B - VERTICAL FINISHING PROFILES

Double slotted profile for panels from 6/8" to 3/4" (18 to 19 mm) (flush fit) to 1 3/16" (30 mm) thickness.

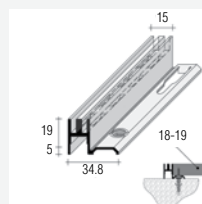
PRODUCT	FINISH	DESCRIPTION	POSITION	WIDTH	LENGHT	QTY/BOX
62NB2253110	Satin Aluminum	Vertical (Structure)	Central	2 1/8" (54 mm)	99 5/8" (2531 mm)	8
62NB325DX10			Right Side	1 3/8" (35 mm)		
62NB325SX10			Left Side			



62NB2253110



62NB325DX10

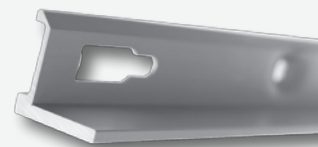


62NB325SX10

C - VERTICAL FINISHING STANDARDS

Vertical finishing profile for panels from 6/8"-3/4" (18-19 mm) (flush fit) to 1 3/16" (30 mm) thickness.

PRODUCT	FINISH	DESCRIPTION	POSITION	WIDTH	LENGHT	QTY/BOX
62NB630DX10	Satin Aluminum	Vertical (Structure)	Right Side	1" (25 mm)	118 9/16" (3012 mm)	8
62NB630SX10			Left Side			
62NB8301210			Central	1 7/8" (48 mm)		2
62NB9301210			Corner	2 1/4" (58 mm)		

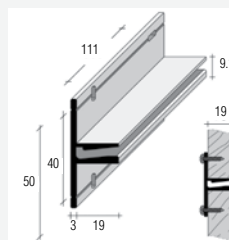


FIT ART MODULAR SYSTEM

D - HORIZONTAL CUSTOMIZABLE PROFILE

Horizontal profile for 6/8"-3/4" (18-19 mm) panel thickness.

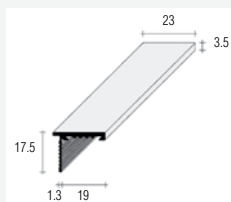
PRODUCT	FINISH	POSITION	WIDTH	LENGHT	QTY/BOX
62FMH301210	Satin Aluminum	Central	1 31/32" (50 mm)	118" (3012 mm)	8



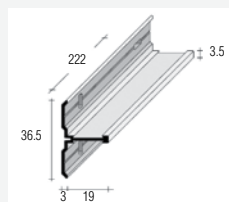
E - HORIZONTAL FINISHING PROFILES

Horizontal finishing profile for 6/8"-3/4" (18-19 mm) panel thickness.

PRODUCT	FINISH	DESCRIPTION	POSITION	WIDTH	LENGHT	QTY/BOX
62FM6301210	Satin Aluminum	Horizontal (Accessories Only)	Lateral Finishing	11/16" (17 mm)	118" (3012 mm)	8
62FM8301210			Central	1 7/16" (37 mm)		



62FM6301210



62FM8301210



F1 - UNDERMOUNT HORIZONTAL SHELF SUPPORT

Rectangular support for 7/8" (22 mm) thick wood shelves to be inserted into the horizontal customizable profile (62FMH301210).

PRODUCT	FINISH	DESCRIPTION	POSITION	LENGHT	LOAD CAPACITY	QTY/BOX
6222HC33010	Satin Aluminum	Without hangrail	Central	13" (330 mm)	33 lb (15 kg)	20
6222HC33A10		For hangrail				
6222HD33010		Without hangrail	Right Side			
6222HD33A10		For hangrail				
6222HS33010		Without hangrail	Left Side			
6222HS33A10		For hangrail				



F2 - HORIZONTAL UNIT FIXING SUPPORT

To be inserted into horizontal profile 62FMH301210.

- Load capacity depends upon shelf material (weak materials are not advised) and type of assembly (screw diameter and lenght)
- Load behaviour is optimal if supports are used for the whole lenght of the shelf

PRODUCT	FINISH	LENGHT	QTY/BOX
62H30300010	Satin Aluminum	118" (3 m)	8
62HS3300010*	Satin Aluminum	118" (3 m)	4

*with flange



62H30300010



62HS3300010

FIT ART MODULAR SYSTEM

F3 - HORIZONTAL PRE-DRILLED SUPPORTS WITH CONCEALED STEMS

To be inserted into horizontal profile 62FMH301210. Panel thickness: 1 3/16" (30 mm).

- Load capacity depends upon shelf material (weak materials are not advised) and type of assembly (screw diameter and length)
- Load behaviour is optimal if supports are used for the whole length of the shelf

PRODUCT	FINISH	LENGTH	QTY/BOX
62HS3CP0310	Satin Aluminum	11 13/16" (300 mm)	20
62HS3CP0610		23 5/8" (600 mm)	
62HS3CP0910		35 7/16" (900 mm)	



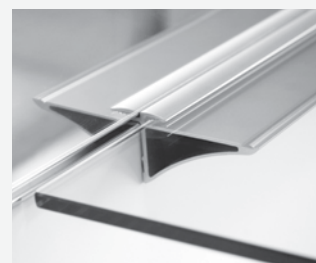
G - HORIZONTAL GLASS SHELF SUPPORT

Horizontal support for 5/16" (8 mm) thick glass shelves.

To be inserted into the horizontal equippable profile (62FMH301210).

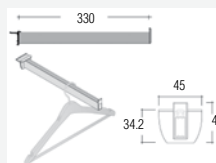
- Maximum glass shelf width: 15 3/4" (400 mm)
- Load capacity is optimal if supports are used for the whole length of the shelf

PRODUCT	FINISH	LENGTH	QTY/BOX
62HV8G30010	Satin Aluminum	118" (3012 mm)	1



H - HORIZONTAL SUPPORT WITH GASKET AND RAISED END CAP

PRODUCT	FINISH	DESCRIPTION	POSITION	LENGTH	LOAD CAPACITY	QTY/BOX
6228H033S10	Anodized Aluminum	Without hangrail	Horizontal	13" (330 mm)	39.6 lb (18 kg)	4



I1 - VERTICAL DOUBLE-INSERT MONO SUPPORTS

Rectangular wood shelf support to be used with vertical double-slotted profiles (62NB2253110).

- Minimum wood shelves thickness: 6/8" (18 mm)

PRODUCT	FINISH	LENGTH	LOAD CAPACITY	QTY/BOX
62MCT019010	Satin Aluminum	7 1/2" (190 mm)	132 lb (60 kg)	2
62MCT026010		10 1/4" (260 mm)	110 lb (50 kg)	



I2 - UNDERMOUNT VERTICAL DOUBLE-INSERT SHELF SUPPORTS

Rectangular support for 7/8" (22 mm) thick wood shelves to be installed on vertical slotted profiles.

PRODUCT	FINISH	DESCRIPTION	POSITION	LENGHT	LOAD CAPACITY	QTY/BOX
6222DC40010	Satin Aluminum	Without hangrail	Central	15 3/4" (400 mm)	132 lb (60 kg)	20
6222DC40A10		For hangrail				30
6222DD40010		Without hangrail	Right Side			10
6222DD40A10		For hangrail				40
6222DS40010		Without hangrail	Left Side			20
6222DS40A10		For hangrail				40



I3 - UNDERMOUNT VERTICAL SINGLE-INSERT SHELF SUPPORTS

PRODUCT	FINISH	DESCRIPTION	POSITION	LENGHT	LOAD CAPACITY	QTY/BOX
6222LD40010	Anodized Aluminum	Without hangrail	Right Side	15 3/4" (400 mm)	66 lb (30 kg)	30
6222LD40A10		For hangrail				15
6222LS40010		Without hangrail	Left Side			30
6222LS40A10		For hangrail				15



J - VERTICAL DOUBLE-INSERT SUPPORTS WITH PINS

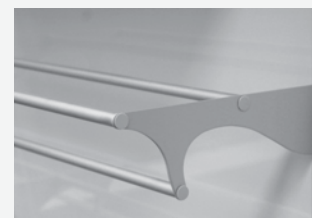
Rectangular 35° support with pins for double slotted vertical profiles.

REF.	PRODUCT	FINISH	DESCRIPTION	POSITION	LENGHT	LOAD CAPACITY	QTY/BOX
J1	6228DIN0310	Anodized Aluminum	Without hangrail	Vertical (Structure)	7 1/16" (180 mm)	132 lb (60 kg)	4
J2	6228DIN0610				13 3/8" (340 mm)	110 lb (50 kg)	



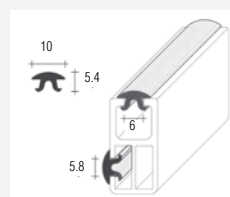
K - VERTICAL SHOE RACK SUPPORTS

REF.	PRODUCT	FINISH	DESCRIPTION	LENGHT	LOAD CAPACITY	QTY/BOX
K1	62SKADX0310	Satin Aluminum	Right Side Support	-	11 lb (5 kg)	10
	62SKASX0310		Left Side Support			
K2	62T12300010		Tube	118 1/8" (3 m)	-	



L1 - TRANSPARENT GASKET FOR RECTANGULAR HANGRAIL ROD

PRODUCT	FINISH	DESCRIPTION	LENGHT	QTY/BOX
62G3012MT11	Clear	For hangrail	47 1/4" (1200) mm	20



L2 - HANGRAIL ROD CONNECTOR

Inner joint for 62R30300010 rectangular hangrail connection.

PRODUCT	FINISH	DESCRIPTION	LENGHT	QTY/BOX
62GNTR3022G	Zinc	For hangrail	1 31/32" (50 mm)	40



FIT ART MODULAR SYSTEM ACCESSORIES

INSERT FOR SIDE-MILLED WOOD SHELF

PRODUCT	FINISH	DESCRIPTION	LENGHT	QTY/BOX
62CAVCLIP170	Stainless Steel	Vertical (Structure)	1 31/32" (50 mm)	160



HOLDING BRACKETS WITH CAM CONNECTORS

Panel Thickness: 3/4" to 7/8" (19 to 22 mm).

PRODUCT	FINISH	DESCRIPTION	POSITION	LENGHT	LOAD CAPACITY	QTY/BOX
62FFDX602G	Zinc	Vertical (Structure)	Right Side	2 3/8" (60 mm)	220 lb (100 kg)	20
62FFXS602G			Left Side			
62FFDX962G			Right Side	3 3/4" (95 mm)		
62FFXS962G			Left Side			



FINISHING GASKETS FOR VERTICAL SLOTTED STANDARD

5/32" (4 mm) gasket for vertical slotted profiles.

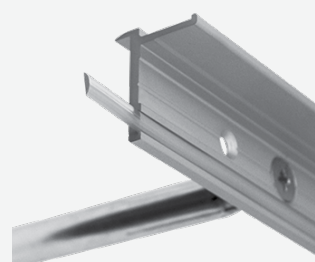
PRODUCT	FINISH	LENGHT	QTY/BOX
62GRN10MT90	Black	32' 9" (10 m)	1
62GRN10MT100	Gray		



TRANSPARENT REAR GASKET

To be used with: 62HS3300010, 62HS3CP0910, 62HS3CP0610, 62HS3CP0310.

PRODUCT	FINISH	LENGHT	QTY/BOX
62MZN6X15311	Clear	118" (3 m)	1



CAVARE PULL-OUT SHELF SYSTEM

For kitchens, living rooms, closets, offices.

The discreet and elegant Cavare sliding shelf system is designed for kitchens, offices, living rooms and closets. With simple access from the front and complete visibility of all the products inside, this is a unique storage solution to suit minimalist trends.

Large storage surface: the slim metal maximizes the available space

- Practical: provided with an adapter that enables installation on concealed slides (3/4 or full extension) with or without dampening
- Anti-slip: each shelf comes with a non-skid mat to prevent items from sliding, falling, or making noise
- The Cavare system includes 2 shelves with non-skid mats
- For a face frame cabinet application, use slides 562F4570, 563F4570B or 563H4570B
- Versatile: available in 2 widths of 23-5/8" and 35-7/16" (600 and 900 mm) for Cavare sliding shelves (#2131710 and #2132310)
- Optimize space: the shelf angle can be adjusted to 3 different positions for a multitude of uses in the kitchen, closet and other rooms of your home



PRODUCT	FINISH	PRODUCT DIMENSIONS		MIN. INTERIOR DIMENSIONS REQUIRED		QTY/BOX
		WIDTH	DEPTH	HEIGHT	DEPTH	
2131710	Aluminum Gray	22 1/8" to 22 3/8" (562 to 568 mm)	19 11/16" (500 mm)	5 1/8" (130 mm)	19 11/16" (500 mm)	2
2132310		33 15/16" to 34 3/16" (862 to 868 mm)				

Slides and dividers must be purchased separately.

Required product(s):

PRODUCT	DESCRIPTION
550H4500B	550H Concealed Single-Extension Drawer Runners
560H4500B	Full-Extension 560H Runner System - With Blumotion - 17 3/4" (450 mm)

ADDITIONAL CAVARE SHELVES

- Easy to use: this additional shelf is equipped with powerful magnets; simply place on the existing Cavare shelf and voila!
- Practical: the folded edge prevents items from falling

PRODUCT	FINISH	PRODUCT DIMENSIONS - HEIGHT	MIN. INTERIOR DIMENSIONS REQUIRED		QTY/BOX
			WIDTH	DEPTH	
21449110	Aluminum Gray	6 5/16" to 6 7/16" (160 to 164 mm)	21" (534 mm)	8 29/32" (226 mm)	1
21455110			32 7/8" (534 mm)	8 29/32" (226 mm)	



CAVARE MAGNETIC DIVIDERS

Magnetic dividers let you configure your storage as you wish.

- Versatile system: Various dimensions let you divide any 17 3/4", 23 5/8", or 35 7/16" (450, 600, or 900 mm) wide Cavare sliding shelf (#2131110, #2131710 or #2132310)
- Easy to use: No tools required. Simply place the dividers on the tray and the strong magnets will keep them in place

Application: Ideal organize space in the kitchen, living room, and closet

PRODUCT	FINISH	PRODUCT DIMENSIONS			QTY/BOX
		WIDTH	HEIGHT	DEPTH	
2130100	Gray	3 9/16" (90 mm)	3 3/8" (85 mm)	1" (25 mm)	4
21464110	Aluminum Gray	9 1/8" (232 mm)	1 1/2" (38 mm)		20
21470110	Aluminum Gray	15 1/16" (382 mm)			
21476110	Aluminum Gray	20 15/16" (532 mm)			
21482110	Aluminum Gray	32 3/4" (832 mm)			



NOTES