

SLIDING PANTRY WITH NON-SLIP BASKETS

This sliding pantry series is the answer to your full access (frameless) cabinetry needs.

- Full access (frameless) 24" (610 mm) deep cabinetry
- Baskets available in gray and maple solid bottoms
- Compliant with Carb II requirements
- Features micro-adjustment door mounting brackets
- Glides quietly on 250 lb (113 kg) rated full-extension, soft-close slide system

Included: Kit packaged with frame, baskets and hardware

PRODUCT	FINISH	PRODUCT DIMENSIONS		INTERIOR DIMENSIONS REQUIRED		MINIMUM OPENING WIDTH	INCLUDED BASKETS	INCLUDED DOOR BRACKETS	QTY/ BOX
		WIDTH	DEPTH	HEIGHT	DEPTH				
534308GR	Gray/Chrome	8" (203 mm)	21 11/16" (551 mm)	43 3/8 to 50 3/4" (1102 to 1289 mm)	22" (559 mm)	9" (229 mm)	4	2	1
534308MP	Maple/Chrome			50 3/4 to 58 1/4" (1289 to 1480 mm)			5	3	
535008GR	Gray/Chrome			58 1/4 to 65 3/4" (1480 to 1670 mm)			6	4	
535008MP	Maple/Chrome			73 5/8 to 80 3/4" (1870 to 2051 mm)					
535808GR	Gray/Chrome								
535808MP	Maple/Chrome								
537308GR	Gray/Chrome								
537308MP	Maple/Chrome								
534310GR	Gray/Chrome	10" (254 mm)	21 11/16" (551 mm)	43 3/8 to 50 3/4" (1102 to 1289 mm)	22" (559 mm)	11" (279 mm)	4	2	
534310MP	Maple/Chrome			50 3/4 to 58 1/4" (1289 to 1480 mm)			5	3	
535010GR	Gray/Chrome			58 1/4 to 65 3/4" (1480 to 1670 mm)			6	4	
535010MP	Maple/Chrome			73 5/8 to 80 3/4" (1870 to 2051 mm)					
535810GR	Gray/Chrome								
535810MP	Maple/Chrome								
537310GR	Gray/Chrome								
537310MP	Maple/Chrome								
534313GR	Gray/Chrome	13" (330 mm)	21 11/16" (551 mm)	43 3/8 to 50 3/4" (1102 to 1289 mm)	22" (559 mm)	14" (356 mm)	4	2	
534313MP	Maple/Chrome			50 3/4 to 58 1/4" (1289 to 1480 mm)			5	3	
535013GR	Gray/Chrome			58 1/4 to 65 3/4" (1480 to 1670 mm)			6	4	
535013MP	Maple/Chrome			73 5/8 to 80 3/4" (1870 to 2051 mm)					
535813GR	Gray/Chrome								
535813MP	Maple/Chrome								
537313GR	Gray/Chrome								
537313MP	Maple/Chrome								
534316GR	Gray/Chrome	16" (406 mm)	21 11/16" (551 mm)	43 3/8 to 50 3/4" (1102 to 1289 mm)	22" (559 mm)	17" (432 mm)	4	2	
534316MP	Maple/Chrome			50 3/4 to 58 1/4" (1289 to 1480 mm)			5	3	
535016GR	Gray/Chrome			58 1/4 to 65 3/4" (1480 to 1670 mm)			6	4	
535016MP	Maple/Chrome			73 5/8 to 80 3/4" (1870 to 2051 mm)					
535816GR	Gray/Chrome								
535816MP	Maple/Chrome								
537316GR	Gray/Chrome								
537316MP	Maple/Chrome								
534319GR	Gray/Chrome	19" (483 mm)	21 11/16" (551 mm)	43 3/8 to 50 3/4" (1102 to 1289 mm)	22" (559 mm)	20" (508 mm)	4	2	
534319MP	Maple/Chrome			50 3/4 to 58 1/4" (1289 to 1480 mm)			5	3	
535019GR	Gray/Chrome			58 1/4 to 65 3/4" (1480 to 1670 mm)			6	4	
535019MP	Maple/Chrome			73 5/8 to 80 3/4" (1870 to 2051 mm)					
535819GR	Gray/Chrome								
535819MP	Maple/Chrome								
537319GR	Gray/Chrome								
537319MP	Maple/Chrome								



1
SCREWS
AND
FASTENERS

2
FURNITURE
EQUIPMENT

3
HINGES

4
SLIDES

5
CASTERS
AND LEGS

6
KITCHEN
SOLUTIONS

7
CLOSET
SOLUTIONS

8
LIGHTING
SOLUTIONS

9
SINKS
AND
FAUCETS

10
OFFICE

11
SLIDING
DOORS

12
GLASS
HARDWARE

13
PANELS
AND
SURFACES

14
EDGE-
BANDING

15
CABINET
DOORS
AND
DRAWERS

16
CORBELS
AND FLOOR
REGISTERS

17
GLUES,
SILICONES,
CAULK AND
INSULATING

18
TOOLS
AND
SECURITY

19
FINISHING
PRODUCTS
AND SHOP
SUPPLIES

20
COMMERCIAL
DISPLAY
HARDWARE

21
MOLDING,
RAILING AND
BATHROOM
HARDWARE

PULL-OUT SHELVING SYSTEM

This solid wood pull-out system features shelves with chrome rails and a technologically advanced three-slide system for complete stability.

- Maximize space - adjustable shelves allow up to five storage surfaces
- Triple slide system offers additional support and stability
- Easy installation - simply screw the wood block to the bottom of the cabinet for complete stability
- Door mounting brackets allow up to 5" (127 mm) of flexibility during installation, ensuring trouble-free installation on any style of door

Included:

- 1 pull-out shelving system
- Full-extension tri-slides
- Chrome rails
- Adjustable door mounting brackets

	PRODUCT	FINISH	LOAD RATING	PRODUCT DIMENSIONS			MIN. INTERIOR DIMENSIONS REQUIRED			SOFT-CLOSE	QTY/BOX
				WIDTH	HEIGHT	DEPTH	WIDTH	HEIGHT	DEPTH		
New!	448BBSCWC5C	Maple	100 lb (45 kg)	5" (127 mm)	26 1/4" (667 mm)	10 3/4" (273 mm)	5 1/8" (130 mm)	26 3/8" (770 mm)	10 7/8" (276 mm)	With	1
	448WC5C			5" (127 mm)			5 1/8" (130 mm)			Without	
New!	448BBSCWC8C			8" (203 mm)			8 1/8" (206 mm)			With	
	448WC8C			8" (203 mm)			8 1/8" (206 mm)			Without	



TRIMMABLE WOOD UTILITY TRAYS

Hardwood drawer insert with compartments to store your kitchen utensils, vanity accessories, tools, or any other items needed. With a clear UV-cured finish, this tray will blends perfectly with any cabinet.

- Easy drop-in installation
- Reduces clutter while keeping the tools you need handy
- Can be customized to fit drawers of various dimensions
- More than one tray can be combined in a drawer

PRODUCT	FINISH	PRODUCT DIMENSIONS			QTY/BOX
		WIDTH	HEIGHT	DEPTH	
4WUT1	Natural	8 1/8" to 18 1/2" (206 to 470 mm)	2 7/8" (73 mm)	17" to 22" (432 to 559 mm)	1
4WUT1SH	Natural	18 1/2" (470 mm)	2 3/8" (60 mm)	22" (559 mm)	
4WUT3	Natural	12" to 24" (305 to 610 mm)	2 7/8" (73 mm)	17 5/8" to 22" (448 to 559 mm)	
4WUT3SH	Natural	24" (610 mm)	2 3/8" (60 mm)	22" (559 mm)	
4WUTWN1SH	Walnut	15 1/8" (384 mm)	2 7/8"		
4WUTWN3SH	Walnut	24" (610 mm)	(73 mm)		



SLIDING STORAGE SYSTEM FOR BASE CABINETS

Sliding storage system for base cabinets that integrates the Blum slide with a soft-close mechanism.

- Superior quality full extension Blum sliding system
- BLUMOTION soft-close mechanism eliminates noise when closing
- Suitable for frameless or face frame cabinets
- Designed for full height lower cabinets
- Height adjustable shelves
- Made of maple coated with UV protection
- Door mounted system - Included door brackets allow adjustment up to 5" (127 mm)
- Lateral felt protected bumper eliminates movement and protects the side of the frame load
- Load rating: 125 lb (23 kg)

PRODUCT	FINISH	PRODUCT DIMENSIONS			MIN. INTERIOR DIMENSIONS WITH FRAME REQUIRED			QTY/BOX
		WIDTH	HEIGHT	DEPTH	WIDTH	HEIGHT	DEPTH	
448BC19SC5C	Maple	6" (152 mm)	25 1/2" (648 mm)	19 1/2" (495 mm)	5 1/8" (130 mm)	25 5/8" (651 mm)	19 1/8" (486 mm)	1
448BCSC5C			25 1/2" to 29 1/2" (495 to 749 mm)	21 5/8" (549 mm)	5 1/2" (140 mm)		21 3/4" (552 mm)	
448BCSC6C		7 1/4" (184 mm)			7" (178 mm)			
448BC19SC8C		8 1/2" (216 mm)	25 1/2" (648 mm)		8 1/4" (210 mm)		19 1/4" (489 mm)	
448BDDSC8C		8 3/4" (222 mm)	19 3/8" to 23 5/16" (492 to 643 mm)	21 1/2" (546 mm)	8 1/2" (216 mm)	19 1/2" (495 mm)	22" (559 mm)	
448BCSC8C			25 1/2" to 29 1/2" (495 to 749 mm)	21 5/8" (549 mm)		10" (254 mm)	25 5/8" (651 mm)	
448BCSC9C		10 1/4" (260 mm)						
448BDDSC11C		11 3/4" (299 mm)	19 3/8" to 23 5/16" (492 to 643 mm)	21 1/2" (546 mm)	11 1/2" (292 mm)	19 1/2" (495 mm)	22" (559 mm)	
448BCSC11C			25 1/2" to 29 1/2" (495 to 749 mm)	21 5/8" (549 mm)		14 1/2" (368 mm)	25 5/8" (651 mm)	
448BCSC14C					14 3/4" (375 mm)			

Frameless dimensions also available on our website



TWO-TIER SLIDING STORAGE SYSTEM FOR BASE CABINETS

- Full extension slides provide complete access
- BLUMOTION soft-close mechanism eliminates noise when closing
- Trays are lined with rubber mat
- Door mounted system (door brackets included)

PRODUCT	FINISH	PRODUCT DIMENSIONS			MIN. INTERIOR DIMENSIONS REQUIRED			QTY/BOX
		WIDTH	HEIGHT	DEPTH	WIDTH	HEIGHT	DEPTH	
5322BCSC5GR	Chrome/Maple	6 1/4"	24 1/2" (622 mm)	19 3/8" (492 mm)	6 3/4" (172 mm)	25" (635 mm)	19 5/8" (499 mm)	1
5322BCSC5MP	Chrome/Maple	(159 mm)						
5322BCSC6FOG	Orion Gray	6 1/2" (165 mm)			7" (178 mm)			
5322BCSC8GR	Chrome/Gray	8"			8 1/2" (216 mm)			
5322BCSC8MP	Chrome/Maple	(203 mm)						
5322BCSC9FOG	Orion Gray	9 1/2" (241 mm)			10" (254 mm)			
532211GR	Chrome/Gray	9 7/8" (251 mm)	21" (533 mm)	19 3/8" (492 mm)	10 1/8" (257 mm)	25" (635 mm)	19 5/8" (499 mm)	
5322BCSC11GR	Chrome/Maple	11"	24 1/2" (622 mm)		11 1/2" (292 mm)			
5322BCSC11MP	Chrome/Maple	(279 mm)						
532216GR	Chrome/Gray	15 7/8" (403 mm)	21" (533 mm)		16" (406 mm)			
532216MP	Chrome/Maple							



TWO-TIER PULL-OUT CABINET UTENSILS AND KNIVES ORGANIZER

- Easy bottom mounting installation
- Equipped with Blum Tandem heavy-duty full-extension runners with BLUMOTION soft-close mechanism
- Door mount brackets allow adjustment up to 5" (127 mm) (2 1/2" (64 mm) on each side
- Chrome accents Gray or Maple shelving
- Knife inserts feature movable flex rods that adjust to hold a multitude of knives
- Stainless steel bin and insert are removable for cleaning
- 5322KBBSC8GR and 5322KBBSC8MP include 1 stainless steel bin
- 5322KBBSC11GR and 5322KB BCSC11MP include 2 stainless steel bins
- Load rating : 110 lb (50 kg)



	PRODUCT	FINISH	PRODUCT DIMENSIONS			MIN. INTERIOR DIMENSIONS REQUIRED		QTY/BOX
			WIDTH	HEIGHT	DEPTH	WIDTH	HEIGHT	
New!	5322KBBSC6FOG	Orion Gray	6 1/2" (165 mm)	24 1/2" (622 mm)	22 3/8" (568 mm)	7" (178 mm)	25" (635 mm)	1
	5322KBBSC8GR	Gray/Chrome	8" (203 mm)			8 1/2" (216 mm)		
	5322KBBSC8MP	Maple/Chrome						
	5322KBBSC11GR	Gray/Chrome	11" (279 mm)			11 1/2" (292 mm)		
	5322KBBSC11MP	Maple/Chrome						

TWO-TIER PULL-OUT CABINET UTENSILS ORGANIZER

- Easy bottom mounting installation
- Equipped with Blum Tandem heavy-duty full-extension runners with BLUMOTION soft-close mechanism
- Door mount brackets allow adjustment up to 5" (127 mm) (2 1/2" (64 mm) on each side
- Chrome accents Gray, Maple or Orion Gray shelving
- Includes three stainless steel bins on top shelf
- Load rating : 110 lb (50 kg)



	PRODUCT	FINISH	PRODUCT DIMENSIONS			MIN. INTERIOR DIMENSIONS REQUIRED			QTY/BOX
			WIDTH	HEIGHT	DEPTH	WIDTH	HEIGHT	DEPTH	
New!	5322UTBCSC6FOG	Orion Gray	6 1/2" (165 mm)	24 1/2" (622 mm)	22 3/8" (568 mm)	7" (178 mm)	25" (635 mm)	23" (584 mm)	1
	5322UTBCSC8GR	Gray/Chrome	8" (203 mm)			8 1/2" (216 mm)			
	5322UTBCSC8MP	Maple/Chrome							

U-SHAPED PULL-OUT BASKETS

This unique U-shaped under sink pull-out is the ideal option for storing cleaning accessories.

- Designed to fit around obtrusive plumbing under the kitchen sink
- Full-extension slides provide easy access to all of your items
- The soft-close system prevents damage from heavy loads
- Slides can support up to 75 lb (34 kg)

Included: Under sink pull-out, soft-close full-extension slides and bottom mounting brackets



	PRODUCT	FINISH	PRODUCT DIMENSIONS			MIN. INTERIOR DIMENSIONS REQUIRED			QTY/BOX
			WIDTH	HEIGHT	DEPTH	WIDTH	HEIGHT	DEPTH	
New!	578630CR	Chrome	29 1/2" to 31 3/4" (737 to 787 mm)	5 1/4" (133 mm)	21 7/8" (556 mm)	29 5/8" (752 mm)	5 5/8" (143 mm)	22 1/8" (562 mm)	1
	538630BCSCGR	Gray			22" (559 mm)	31 3/4" (806 mm)			
	578633CR	Chrome	32 1/2" to 34 3/4" (813 to 864 mm)		21 7/8" (556 mm)	32 5/8" (829 mm)			
New!	538630BCSCMP	Maple			22" (559 mm)	34 1/4" (870 mm)			
	538633BCSCGR	Gray							
	538633BCSCMP	Maple							

DOOR STORAGE TRAYS

Convenient and practical storage tray set for a variety of applications.

- Increases storage options by making use of cabinet door space
- Includes screw-in clips for easy installation

Application: Perfect to organize under the sink cleaning supplies, spices in upper cabinet, or accessories in vanity

PRODUCT	FINISH	PRODUCT DIMENSIONS			QTY/BOX
		WIDTH	HEIGHT	DEPTH	
62350840	Almond	7 1/2" (191 mm)	3 9/16" (90 mm)	4 1/4" (108 mm)	5
6235830	White	7 7/8" (200 mm)			
6235081552	Almond	8" (203 mm)			1
6235081152	White				
62351430	White	13 3/4" (349 mm)			5
6235141552	Almond	14" (356 mm)			1
6235141152	White				
62322030	White	19 3/4" (502 mm)			
6235201152	White	20" (508 mm)			

Suggested product(s):

PRODUCT	DESCRIPTION
623530	Clip for storage bin 6235
62304330	Clips for door storage bin
62322XXX	Aluminum standard and clips for cabinet doors



BOTTOM-MOUNT WOOD BASE RECYCLING CENTERS WITH COMPOST BIN

Innovative no-mess trash carriage that opens when the lid is raised and seals when the lid is closed.

- Sliding system equipped with a soft-close mechanism
- Bottom mount, which is suitable for framed or frameless cabinets
- 12-liter green compost bin included
- A carbon filter integrated into the lid that eliminates odor
- Air vents to help speed the compost process
- Elegant wood base
- Load rating: 100 lb (45.4 kg)

PRODUCT	CAPACITY	FINISH	PRODUCT DIMENSIONS			MIN. INTERIOR DIMENSIONS REQUIRED			QTY/BOX
			WIDTH	HEIGHT	DEPTH	WIDTH	HEIGHT	DEPTH	
4WCSCCP1	12 qt (13.6 L)	Green	15" (381 mm)	20 3/8" (518 mm)	21 11/16" (533 mm)	15 1/2" (394 mm)	20 5/8" (524 mm)	21 3/4" (552 mm)	1
4WCSC1835CP2	47 qt (53.4 L)		18" (457 mm)	18 5/8" (473 mm)	12" (305 mm)	12 1/2" (318 mm)	19" (483 mm)	18 3/4" (476 mm)	

*Covers are included



BOTTOM-MOUNT WOODEN RECYCLING CENTERS – SINGLE AND DOUBLE BIN

With a base in refined solid wood, this recycling system is designed to perfectly complement your cabinetry while being durable and practical.

- Designed for full access (frameless) cabinets
- Concealed full-extension, ball-bearing slides
- Pre-assembled wall-mounted brackets for quick installation
- Easy-to-clean walnut with UV cured satin finish insert securely holds the waste bin(s)
- Load rating: 330 lb (150 kg)



PRODUCT	CAPACITY	FINISH	PRODUCT DIMENSIONS			SOFT-MOTION SYSTEM	QTY/BOX
			WIDTH	HEIGHT	DEPTH		
4WC15DM1	1 x 35 qt (33.1 L)	Maple/White	11 1/4" (286 mm)	19 1/4" (489 mm)	21 3/4" (552 mm)	Without	1
4WC18DM2	2 x 35 qt (33.1 L)	White/Maple	14 1/4" (362 mm)			Without	
4WC24DM2SC	2 x 30 qt (28.4 L)	Silver Gray/Maple	21" (533 mm)			With	
4WCWN1550DM1SC	1 x 50 qt (47.3 L)	Dark Gray/Walnut	12" (305 mm)			With	
4WCWN15DM1SC	1 x 35 qt (33.1 L)	Dark Gray/Walnut				With	
4WCWN18DM2SC	2 x 35 qt (33.1 L)	Dark Gray/Walnut	15" (381 mm)			With	
4WCWN2150DM2SC	2 x 50 qt (47.3 L)	Dark Gray/Walnut				With	

Suggested product(s):

PRODUCT	DESCRIPTION
5LBSDKIT1	Servo-Drive System for LEGRABOX

BOTTOM-MOUNT RECYCLING CENTERS WITH COMPOST BIN

Innovative no-mess trash carriage that opens when the lid is raised and seals when the lid is closed.

- Designed for framed or frameless cabinets
- Heavy-duty, brushed aluminum, soft-close mechanism
- 12-liter green compost bin included
- A carbon filter integrated into the lid that eliminates odor
- Air vents to help speed the compost process
- Load rating: 100 lb (45 kg)

PRODUCT	CAPACITY	FINISH	PRODUCT DIMENSIONS			MIN. INTERIOR DIMENSIONS REQUIRED			QTY/BOX
			WIDTH	HEIGHT	DEPTH	WIDTH	HEIGHT	DEPTH	
5349CP1	1 x 12 qt (11,3 L)	Green	10 13/16" (275 mm)	18 1/2" (470 mm)	18" (457 mm)	11" (279 mm)	18 3/4" (476 mm)	18 1/8" (460 mm)	1
534918CP2	1 x 35 qt (33 L) + 1 x 12 qt (11,3 L)		14 13/16" (376 mm)	19 1/16" (484 mm)	22 3/16" (564 mm)	15" (381 mm)	19 5/16" (491 mm)	22 5/16" (567 mm)	



BOTTOM-MOUNT UNDER-SINK SLIDING COMPOST BIN

Innovative no-mess trash carriage that opens when the lid is raised and seals when the lid is closed.

- Designed to be mounted in a cabinet with a hinged door, it also converts to be door-mounted using door mounting kit (RVDM117KIT), sold separately
- Heavy-duty wire frame construction
- Bottom-mount system; therefore, without restriction of box width requirements
- 8-liter green tray with lid included
- A carbon filter that eliminates odors
- Air vents to help speed the compost process
- Load rating: 100 lb (45 kg)

PRODUCT	CAPACITY	FINISH	PRODUCT DIMENSIONS			MIN. INTERIOR DIMENSIONS REQUIRED			SOFT-MOTION SYSTEM	QTY/BOX
			WIDTH	HEIGHT	DEPTH	WIDTH	HEIGHT	DEPTH		
RV1216CP1	8,4 qt (8 L)	Green	12" (305 mm)	18 3/4" (476 mm)	16" (406 mm)	12 1/2" (318 mm)	19" (483 mm)	16 1/2" (419 mm)	Without	1

Suggested product(s):

PRODUCT	DESCRIPTION
RVDM117KIT	Door mounting kit



BOTTOM-MOUNT UNDER-SINK RECYCLING CENTERS

- Designed to be mounted in a cabinet with a hinged door, it also converts to be door-mounted using door mounting kit (RVDM117KIT), sold separately
- Bottom-mount system; therefore, without restriction of box width requirements
- 2 versions available:
 - 1 with 1 15-liter bin and white lid for organic waste and 1 8-liter bin with green cover for recycling
 - with 1 8-liter tray and a green lid and clipper dividers to organize and keep cleaning products in place
- Full extension slides with soft-close mechanism
- Bins equipped with handles for easy removal
- Load rating: 75 lb (34 kg)

Application: Ideal recycling center for under-sink cabinet or vanity unit

PRODUCT	CAPACITY	FINISH	PRODUCT DIMENSIONS			MIN. INTERIOR DIMENSIONS REQUIRED			QTY/BOX
			WIDTH	HEIGHT	DEPTH	WIDTH	HEIGHT	DEPTH	
5SBWCC8S1	1 x 18,8 qt (15 L)	Silver Gray	8 15/16" (227 mm)	14 1/4" (362 mm)	16 5/8" (422 mm)	9" (229 mm)	14 1/4" (362 mm)	17" (432 mm)	1
5SBWC815S1	1 x 18,8 qt (15 L) + 1 x 8,4 qt (8 L)								

Suggested product(s):

PRODUCT	DESCRIPTION
RVDM117KIT	Door mounting kit



RECYCLING CENTERS WITH BLUM LEGRABOX MECHANISM

- Designed for 15" (381 mm) and 18" (457 mm) frameless cabinets with 3/4" (19 mm) side panels
- Full extension slide with BLUMOTION soft closing mechanism
- Fully assembled, only the door must be added
- Sleek Orion gray LEGRABOX frame of 9 1/2" (241 mm) high
- Available in Orion gray, with wood, walnut, or stainless steel insert with black insert
- Easy door mounting with three-dimensional height, side, and tilt adjustments
- Matching color lid included with all models; however, two-bin models include only one lid
- Compatible with with TIP-ON (5LBTKIT15 and 5LBTKIT18) or SERVO-DRIVE (5LBSDKIT1) systems (sold separately)
- Load rating: 135 lb (61 kg)



PRODUCT	CAPACITY	FINISH	PRODUCT DIMENSIONS			MIN. INTERIOR DIMENSIONS REQUIRED			QTY/BOX
			WIDTH	HEIGHT	DEPTH	WIDTH	HEIGHT	DEPTH	
5LB15350GWN113	1 x 35 qt (33 L)	Dark Gray/ Walnut	13 1/2" (343 mm)	19 1/2" (495 mm)	21 3/4" (552 mm)	13 1/2" (343 mm)	20" (508 mm)	22" (559 mm)	1
5LB1535SSBL118		Steel/Black		(495 mm)			(508 mm)		
5LB15500GWN113	1 x 50 qt (47 L)	Dark Gray/ Walnut	13 1/2" (343 mm)	23 3/8" (594 mm)		13 1/2" (343 mm)	24" (610 mm)		
5LB1550SSBL118		Steel/Black		(594 mm)			(610 mm)		
5LB18350GWN213	2 x 35 qt (33 L)	Dark Gray/ Walnut	16 1/2" (419 mm)	19 1/2" (495 mm)		16 1/2" (419 mm)	20" (508 mm)		
5LB1835SSBL218		Steel/Black		(495 mm)			(508 mm)		
5LB18500GWN213	2 x 50 qt (47 L)	Dark Gray/ Walnut		23 3/8" (594 mm)			24" (610 mm)		
5LB1850SSBL218		Steel/Black		(594 mm)			(610 mm)		

Suggested product(s):

PRODUCT	DESCRIPTION
5LBSDKIT1	Servo-Drive System for LEGRABOX
RV35LID171	Lid for 35-L Silver gray bin
RV35LIG131	Lid for 35-L Orion gray bin
RV50LID171	Lid for 50-L Silver gray bin
RV50LID131	Lid for 50-L Orion gray bin
5LBTKIT15	LEGRABOX Insert System
5LBTKIT18	

TOP-MOUNT WALNUT RECYCLING CENTERS

- Features Rev-A-Motion Soft-Open/Soft-Close slide system
- Concealed full-extension, ball-bearing slides
- Pre-assembled door mount brackets
- Rear adjustable mounting brackets for variances in cabinet depth
- Solid walnut dovetail constructed frame with UV cured satin finish
- Load rating: 150 lb (68 kg)



PRODUCT	CAPACITY	FINISH	PRODUCT DIMENSIONS		MIN. INTERIOR DIMENSIONS REQUIRED - WIDTH	QTY/BOX
			WIDTH	DEPTH		
4WCTMWNRM1850DM	1 x 50 qt (56.8 L)	Dark Gray/ Walnut	15 1/4" (387 mm)	21 3/4" (552 mm)	15 1/2" (394 mm)	1
4WCTMWNRM2150DM	2 x 50 qt (56.8 L)		18 1/4" (464 mm)		18 1/2" (470 mm)	

TOP-MOUNT STEEL RECYCLING CENTER FOR FRAMELESS CABINETS

- Designed for 18" (457 mm) wide frameless cabinets
- Works with both 5/8" (16 mm) and 3/4" (19 mm) side walls
- Full-extension with 1-1/2" (13 mm) over-travel, Grass, 90 lb (40.8 kg) rated slides with soft-close
- Double 50 qt. (47.3 L) waste containers with a metal lid included
- Built-in metal lid inside the cabinet for extra storage space
- Door mountable frame (door mounting brackets included)
- Load rating: 90 lb (40.8 kg)

PRODUCT	CAPACITY	FINISH	PRODUCT DIMENSIONS			MIN. INTERIOR DIMENSIONS REQUIRED			QTY/BOX
			WIDTH	HEIGHT	DEPTH	WIDTH	HEIGHT	DEPTH	
53TM1850GSCDM2F	2 x 50 qt (47,3 L)	Silver Gray	16" (406 mm)	23" (584 mm)	21 11/16" (551 mm)	16 1/2" (419 mm)	25" (635 mm)	22" (559 mm)	1



INDIVIDUAL SHELF SYSTEM FOR CORNER CABINET

- Bottom mounting rail system
- Opens to the left or to the right
- Base in gray or maple finish
- Soft-close mechanism # 5371SCKIT1 sold separately

PRODUCT	FINISH	PRODUCT DIMENSIONS			MIN. INTERIOR DIMENSIONS REQUIRED -WIDTH	HANDED	OPENING WIDTH	QTY/ BOX				
		WIDTH	HEIGHT	DEPTH								
537115GRL	Gray/	33" (838 mm)	5 5/8" (143 mm)	21 7/8" (556 mm)	33 1/2" (851 mm)	Left Hand	15" (381 mm)	1				
537115GRR	Chrome					Right Hand						
537115MPL	Maple/					Left Hand						
537115MPR	Chrome					Right Hand						
537115FOGL	Orion Gray				34" (863 mm)	Left Hand						
537115FOGR						Right Hand						
537118FOGL	Orion Gray	37 5/8" (956 mm)	5 5/8" (143 mm)	21 9/16" (548 mm)	38" (965 mm)	Left Hand	18" (457 mm)					
537118FOGR						Right Hand						
537118GRL	Gray/	37 5/8" (956 mm)	5 5/8" (143 mm)	21 9/16" (548 mm)	38 1/8" (968 mm)	Left Hand	18" (457 mm)					
537118GRR	Chrome					Right Hand						
537118MPL	Maple/					Left Hand						
537118MPR	Chrome					Right Hand						
537121GRL	Gray/	39" (991 mm)	5 5/8" (143 mm)	21 3/4" (552 mm)	39 1/2" (1003 mm)	Left Hand	21" (533 mm)					
537121GRR	Chrome					Right Hand	21" (533 mm)					
537121MPL	Maple/					Left Hand	21" (533 mm)					
537121MPR	Maple/					Right Hand	21" (533 mm)					
537121FOGL	Orion Gray					39" (991 mm)	5 5/8" (143 mm)		21 3/4" (552 mm)	40" (1016 mm)	Left Hand	21" (533 mm)
537121FOGR	Orion Gray										Right Hand	21" (533 mm)



Suggested product(s):

PRODUCT	DESCRIPTION
5371SCKIT1	Soft-close mechanism kit/single shelf

- 1 SCREWS AND FASTENERS
- 2 FURNITURE EQUIPMENT
- 3 HINGES
- 4 SLIDES
- 5 CASTERS AND LEGS
- 6 KITCHEN SOLUTIONS
- 7 CLOSET SOLUTIONS
- 8 LIGHTING SOLUTIONS
- 9 SINKS AND FAUCETS
- 10 OFFICE
- 11 SLIDING DOORS
- 12 GLASS HARDWARE
- 13 PANELS AND SURFACES
- 14 EDGE-BANDING
- 15 CABINET DOORS AND DRAWERS
- 16 CORBELS AND FLOOR REGISTERS
- 17 GLUES, SILICONES, CAULK AND INSULATING
- 18 TOOLS AND SECURITY
- 19 FINISHING PRODUCTS AND SHOP SUPPLIES
- 20 COMMERCIAL DISPLAY HARDWARE
- 21 MOLDING, RAILING AND BATHROOM HARDWARE

NOT SO LAZY SUSAN

- Cleverly stores your pans and skillets
- Handle on the upper tray to spin to see and have immediate access to your pans
- 3/4 shaped Susan in varnished maple
- Delivered with 7 metal hooks but can take up to 17 hooks. Additional hooks (10988908) sold separately
- Assembled in minutes - drilling template included
- Model provided also without lower table to install or make your own table

PRODUCT	FINISH	DESCRIPTION	TRAY Ø	MIN. INTERIOR DIMENSIONS REQUIRED -HEIGHT	OPENING WIDTH	QTY/BOX
14007100	Maple	Tray not included	32" (813 mm)	28 3/8" to 29 1/4" (721 to 743 mm)	14" (356 mm)	1
14287150		1 tray	28" (711 mm)		11 1/2" (292 mm)	
14327150			32" (813 mm)		14" (356 mm)	

Suggested product(s):

PRODUCT	DESCRIPTION
10988150	Universal wood pull-out pot rack
10988908	Additional storage hooks



THREE-TIER BLIND CORNER OPTIMIZER

The first Three-Tier blind corner pull-out unit

- Fit most 45" (1143 mm) and 48" (1219 mm) base blind corner cabinets
- Designed for 15" (381 mm) and 18" (452 mm) door opening full height blind corner cabinets
- Full-extension ball-bearing soft-close slide system
- Non-handed, can be installed for right or left blind corner cabinets
- First set of baskets slide out and over, allowing access to the rear baskets that also pull out
- Three levels of elegant chrome shelves to store many pantry items, specialty cookware, and small appliances
- Load rating: 100 lb (45.4 kg)

PRODUCT	FINISH	PRODUCT DIMENSIONS			MIN. INTERIOR DIMENSIONS REQUIRED			OPENING WIDTH	QTY/ BOX
		WIDTH	HEIGHT	DEPTH	WIDTH	HEIGHT	DEPTH		
5PSP315SCCR	Chrome	26 1/4" (667 mm)	24" (610 mm)	20 1/4" (514 mm)	26 1/2" (673 mm)	24 1/2" (622 mm)	20 1/2" (521 mm)	15" (381 mm)	1
53PSP315SCGR	Gray								
53PSP315SCMP	Maple								
5PSP318SCCR	Chrome	32 1/4" (819 mm)	24" (610 mm)	20 1/4" (514 mm)	32 1/2" (826 mm)	24 1/2" (622 mm)	20 1/2" (521 mm)	18" (457 mm)	
53PSP318SCGR	Gray								
53PSP318SCMP	Maple								



TWO-TIER BLIND CORNER OPTIMIZER

- Designed for full access (frameless) blind corner cabinets with 15" (381 mm), 18" (457 mm) or 21" (533 mm) openings
- Soft-close mechanism (5372SCKIT2) sold separately
- Opens to the left or to the right
- Shelves rotate and slide on a telescopic post system
- Base in orion gray or maple finish and chrome gallery
- Solid bottom features a textured linen finish



PRODUCT	FINISH	PRODUCT DIMENSIONS			MIN. INTERIOR DIMENSIONS REQUIRED			HANDED	OPENING WIDTH	QTY/ BOX
		WIDTH	HEIGHT	DEPTH	WIDTH	HEIGHT	DEPTH			
537215FOGL	Orion Gray	33"	24 1/2"	21 3/8"	34"	26"	22 13/16"	Left Hand	15"	1
537215FOGR		(838 mm)	(622 mm)	(543 mm)	(864 mm)	(660 mm)	(579 mm)	Right Hand	(381 mm)	
537215GRL	Gray/ Chrome	33" (838 mm)	24 7/16" to 30 1/4" (621 to 768 mm)	21 7/8" (556 mm)	34 9/16" (878 mm)	26" (660 mm)	22 7/8" (581 mm)	Left Hand	15" (381 mm)	
537215GRR	Gray/ Chrome							Right Hand		
537215MPL	Maple/Chrome							Left Hand		
537215MPR	Maple/Chrome							Right Hand		
537218FOGL	Orion Gray	37 5/8"	24 1/2"	21 3/8"	38"	26"	22 13/16"	Left Hand	18"	
537218FOGR	Orion Gray	(956 mm)	(622 mm)	(543 mm)	(965 mm)	(660 mm)	(580 mm)	Right Hand	(457 mm)	
537218GRL	Gray/ Chrome	37 5/8" (956 mm)	24 7/16" to 30 1/4" (621 to 768 mm)	21 9/16" (548 mm)	39 9/16" (1005 mm)	26" (660 mm)	22 7/8" (581 mm)	Left Hand	18" (457 mm)	
537218GRR	Gray/ Chrome							Right Hand		
537218MPL	Maple/Chrome							Left Hand		
537218MPR	Maple/Chrome							Right Hand		
537221FOGL	Orion Gray	39"	24 1/2"	21 3/8"	40"	26"	22 13/16"	Left Hand	21"	
537221FOGR	Orion Gray	(991 mm)	(622 mm)	(543 mm)	(1016 mm)	(660 mm)	(579 mm)	Right Hand	(533 mm)	
537221GRL	Gray/Chrome	39" (991 mm)	24 7/16" to 30 1/4" (621 to 768 mm)	21 3/4 " (552 mm)	40 9/16" (1031 mm)	26" (660 mm)	22 7/8" (581 mm)	Left Hand	21" (533 mm)	
537221GRR	Gray/ Chrome							Right Hand		
537221MPR	Maple/Chrome							Right Hand		
537221MPL	Maple/Chrome							Left Hand		

Suggested product(s):

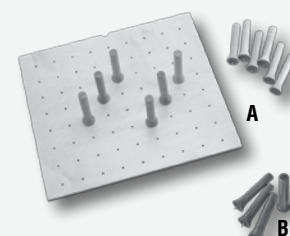
PRODUCT	DESCRIPTION
5372SCKIT2	Soft-close mechanism kit/double shelf

CUT-TO-SIZE DRAWER PEG SYSTEM

Pegboard system designed to create storage space for all kinds of items, from dinner plates to plastic containers and more.

- Constructed of maple that is UV cured
- Can be trimmed to exact drawer size with table saw
- Push-in removable pegs to create a personalized organization system

REF.	PRODUCT	FINISH	DESCRIPTION	PRODUCT DIMENSIONS			QTY/BOX
				WIDTH	HEIGHT	DEPTH	
A	4DPS2421	Maple	Includes 9 pegs	24 1/4" (616 mm)	6 5/8" (169 mm)	21 1/4" (540 mm)	1
	4DPSWN2421	Walnut					
	4DPS3021	Maple	Includes 12 pegs				
	4DPSWN3021	Walnut					
	4DPS3921	Maple	Includes 16 pegs	39 1/4" (997 mm)			
	4DPSWN3921	Walnut					
PEGS FOR PEGBOARD SYSTEM							
B	4DPSPEG4	Maple	Set of extra pegs for pegboard drawer inserts	1 1/4" (32 mm)	6" (152 mm)	1 1/4" (32 mm)	4
	4DPSPEGWN4	Walnut					4
	DPSPEG4SS	Stainless Steel					1



CUT-TO-SIZE WOOD CUTLERY TRAY FOR DRAWERS

Maple hardwood drawer insert with compartments to store kitchen cutlery. Blend perfectly with any cabinet and can be customized to fit drawers of various dimensions.

- Easy drop-in installation
- Constructed of maple that is UV cured
- Can be trimmed to exact drawer size with table saw
- Reduces clutter and keeps your cutlery tidy

PRODUCT	FINISH	PRODUCT DIMENSIONS			QTY/BOX
		WIDTH	HEIGHT	DEPTH	
4WCTWN1SH	Walnut	8 5/8" to 15 1/8" (219 to 384 mm)	2 7/8" (73 mm)	15 1/2" to 22" (394 to 559 mm)	1
4WCT1	Maple	8 3/4" to 14 5/8" (222 to 371 mm)			
4WCTWN3SH	Walnut	14 1/8" to 21" (359 to 533)			
4WCT3	Maple	14 1/4" to 20 5/8" (362 to 524 mm)			
4WCT1SH	Clear	14 5/8" (371 mm)		22" (559 mm)	
4WCT3SH	Clear	20 5/8" (524 mm)			



CUT-TO-SIZE WOOD DOUBLE KNIFE BLOCK INSERT FOR DRAWERS

- Designed for use in drawers from 12 1/2" to 18 1/2" (318 to 470 mm)
- Can also be used in wider drawers to add other cutlery or utensils inserts
- Offers 2 rows of slots and handle rest that keeps knives straight and provides ample finger space for easy removal
- Include 55 slots to store multiple sizes of knives and a separate compartment for cleavers and other utensils
- Solid walnut construction with UV cured satin finish

PRODUCT	FINISH	PRODUCT DIMENSIONS			MIN. INTERIOR DIMENSIONS REQUIRED			QTY/BOX
		WIDTH	HEIGHT	DEPTH	WIDTH	HEIGHT	DEPTH	
4WDKB1	Maple	18 1/2" (470 mm)	2" (51 mm)	22" (559 mm)	12 1/2" to 18 1/2" (318 to 470 mm)	2 5/16 (59 mm)	18" to 22" (457 to 559)	1
4WDKBWN1	Walnut							



WOOD DIVIDER FOR DRAWER ORGANISERS

Drawer divider for utensils suitable for drawers from series 4WCT, 4WUT, 4WKB and 4SDI.

PRODUCT	FINISH	PRODUCT DIMENSIONS			QTY/BOX
		WIDTH	HEIGHT	DEPTH	
4WD221	Natural	1/2" (13 mm)	2 3/8" (60 mm)	22" (559 mm)	1
4WD22SHWN1	Walnut				

Suggested product(s):

PRODUCT	DESCRIPTION
4WUTWN1SH	Trimmable wood utility tray



TWO-TIER DRAWER CUTLERY ORGANIZER FOR FRAMELESS CABINETS

- Designed for 15", 18", 21" and 24" (381, 457, 533 and 610 mm) wide cabinets without frame and 3/4" (19 mm) side panels
- The upper tray slides into the cabinet to give an immediate access to the bottom tray
- Pre-assembled drawer available with (codes with an *) or without Blum slides with soft-close mechanism
- Easy to install, simply add the drawer front to match the style of your other drawers
- Front bracket pre-mounted on the drawer front



PRODUCT	FINISH	PRODUCT DIMENSIONS			MIN. INTERIOR DIMENSIONS REQUIRED			QTY/BOX
		WIDTH	HEIGHT	DEPTH	WIDTH	HEIGHT	DEPTH	
4WTCD343FL1	Maple	12 15/16" (329 mm)	3 3/4" (95 mm)	21" to 38 11/16" (533 to 983 mm)	13 1/2" (343 mm)	4 1/2" (114 mm)	21 3/4" (552 mm)	1
4WTCD343FLSC1*		13 1/2" (343 mm)		21 11/16" to 38 11/16" (551 to 983 mm)				
4WTCD419FL1		15 15/16" (405 mm)		21 to 38 11/16" (533 to 983 mm)	16 1/2" (419 mm)			
4WTCD419FLSC1*		16 1/2" (419 mm)		21 11/16" to 38 11/16" (551 to 983 mm)				
4WTCD495FL1		18 15/16" (481 mm)		21" to 38 11/16" (533 to 983 mm)	19 1/2" (495 mm)			
4WTCD495FLSC1*		19 1/2" (495 mm)		21 11/16" to 38 11/16" (551 to 983 mm)				
4WTCD572FL1		21 15/16" (557 mm)		21 to 38 11/16" (533 to 983 mm)	22 1/2" (571 mm)			
4WTCD572FLSC1*		22 1/2" (571 mm)		21 11/16" to 38 11/16" (551 to 983 mm)				
4WTCD724FLSC1*		28 1/2" (724 mm)		22 3/16" (564 mm)	29" (737 mm)			
4WTCD876FLSC1*		34 1/2" (876 mm)			35" (889 mm)			

COMBINATION KNIFE/CUTTING BOARD DRAWER

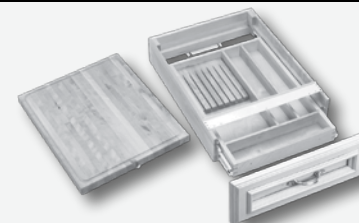
State-of-the-art combination knife drawer and cutting board holder. Features a 7-slot knife holder, accessory compartments, and a removable cutting board treated with mineral oil. Simply attach your own drawer front to create a convenient, user-friendly organizer.

- Arrives as a full set: all you need is a drawer front
- Glides easily on full-extension ball bearing slides
- Unique combined drawer provides easy access to your essential tools

Included:

- 7-slot knife rest
- Cutting board with metal pull
- Full extension slides
- Mounting hardware

PRODUCT	FINISH	PRODUCT DIMENSIONS			QTY/BOX
		WIDTH	HEIGHT	DEPTH	
4KCB24SC1	Natural	15 1/2" (394 mm)	5" (127 mm)	22 1/4" (565 mm)	1
4KCB18SC1		18 1/2" (470 mm)			
4KCB21SC1		21 1/2" (546 mm)			



STAINLESS STEEL BIN

- Multi-use stainless-steel bin
- Can be put on a counter to store, for example, large utensils
- Can be put integrated into a wooden shelf (drilling of shelf required)

PRODUCT	CAPACITY	FINISH	PRODUCT DIMENSIONS			MIN. INTERIOR DIMENSIONS REQUIRED - WIDTH	QTY/BOX
			WIDTH	HEIGHT	DEPTH		
448UTBM1251	1.25 qt (1 L)	Stainless	5" (127 mm)	5 3/4" (146 mm)	5" (127 mm)	4 3/4" (121 mm)	1
448UTBM2001	2 qt (1.9 L)	Steel	5 3/4" (146 mm)	6 3/4" (172 mm)	5 3/4" (146 mm)	5" (127 mm)	



SLIDING PANTRY SYSTEM

System with 5 height-adjustable shelves.

- Orion gray non-slip coating
- Designed for frameless cabinet widths of 18" (457 mm) or 24" (610 mm)
- Delivered with 2 door supports
- System automatically slides from the pantry providing full access to stored products
- Compliant with CARB II requirements
- Load rating: 150 lb (68 kg)

PRODUCT	FINISH	PRODUCT DIMENSIONS			INTERIOR DIMENSIONS REQUIRED			QTY/BOX
		WIDTH	HEIGHT	DEPTH	WIDTH	HEIGHT	DEPTH	
537418FLFOG	Orion Gray	14 1/4" (362 mm)	74 1/16" (1881 mm)	18 1/2" (470 mm)	14 1/2" (368 mm)	75" (1905 mm)	19" (483 mm)	1
537424FLFOG		22 11/16" (576 mm)			22 15/16" (583 mm)			



BOTTOM-MOUNT SOFT-CLOSE RECYCLING CENTER

- 1 or 2 bin recycling center with soft-close mechanism
- Easy bottom mounting with just a few screws. Convenient for both frame and frameless cabinets
- Can be mounted on a door (supports included)
- Also convenient for applications with door hinges, since the handle, located on the front, easily slides the system out
- Load rating: 77 lb (35 kg), except 66 lb (30 kg) for 12216100

PRODUCT	CAPACITY	FINISH	PRODUCT DIMENSIONS			MIN. INTERIOR DIMENSIONS REQUIRED			QTY/BOX
			WIDTH	HEIGHT	DEPTH	WIDTH	HEIGHT	DEPTH	
12216100*	2 x 15.8 qt (15 L)	Gray	11 3/4" (299 mm)	15 1/16" (383 mm)	19 5/8" (499 mm)	12" (305 mm)	16" (406 mm)	20" (508 mm)	1
13512100	1 x 37 qt (35 L)		12" (305 mm)	19 1/2" (495 mm)		12 1/2" (318 mm)	20" (508 mm)		
23215100	2 x 31.7 qt (30 L)		15" (381 mm)			15 1/2" (394 mm)			
23218100			18" (457 mm)			18 1/2" (470 mm)			

*Covers are included



BOTTOM-MOUNT RECYCLING CENTERS

- 1 or 2 bin recycling center with soft-close mechanism
- Convenient for both frame and frameless cabinets
- Easy bottom mounting with just a few screws
- Can be mounted on a door (supports included)
- Also convenient for applications with door hinges, since the handle, located on the front, easily slides the system out

PRODUCT	CAPACITY	FINISH	LOAD RATING	PRODUCT DIMENSIONS			MIN. INTERIOR DIMENSIONS REQUIRED			QTY/BOX
				WIDTH	HEIGHT	DEPTH	WIDTH	HEIGHT	DEPTH	
12216100*	2 x 15.8 qt (15 L)	Gray	Max. 66 lb (30 kg)	11 3/4" (299 mm)	15 1/16" (383 mm)	19 5/8" (499 mm)	12" (305 mm)	16" (406 mm)	20" (508 mm)	1
13512100	1 x 37 qt (35 L)		Max. 77 lb (35 kg)	12" (305 mm)	19 1/2" (495 mm)		15" (381 mm)	20" (508 mm)		
23215100	2 x 31.7 qt (30 L)			15" (381 mm)						
23218100				18" (457 mm)						

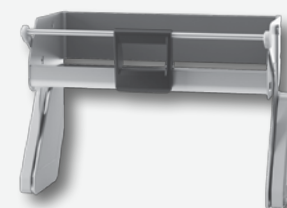
*Covers are included



I-MOVE RETRACTABLE UPPER CABINETS STORAGE SYSTEM

iMove is the intelligent pull-down system that facilitates access to usually hard-to-reach objects at the top of cabinets.

- Fits kitchen wall cabinet widths from 21" to 30" (533 to 762 mm)
- Effortless opening and closing system
- Increases view on stored products
- Optimal access and silent function



I-MOVE RETRACTABLE SYSTEM FOR FRAMED CABINET

PRODUCT	FINISH	PRODUCT DIMENSIONS			MIN. INTERIOR DIMENSIONS REQUIRED		MINIMUM OPENING WIDTH	NUMBER OF SHELVES	QTY. BOX
		WIDTH	HEIGHT	DEPTH	HEIGHT	DEPTH			
2115155150	Champagne, Maple	18" (457 mm)	15" (381 mm)	10 3/4" (273 mm)	16" (406 mm)	11" (279 mm)	18" (457 mm)	1	1
2115100150	Gray, Maple		22 1/4" (565 mm)						
2115100100	Gray, Gray								
2125155150	Champagne, Maple	18" (457 mm)	22 1/4" (565 mm)	10 3/4" (273 mm)	23" (584 mm)	11" (279 mm)	18" (457 mm)	2	
2125100100	Gray, Gray								
2125100150	Gray, Maple								
2415155150	Champagne, Maple	21" (533 mm)	15" (381 mm)	10 3/4" (273 mm)	16" (406 mm)	11" (279 mm)	21" (533 mm)	1	
2415110100	Gray, Gray								
2415100150	Gray, Maple								
2425155150	Champagne, Maple	21" (533 mm)	22 1/4" (565 mm)	10 3/4" (273 mm)	23" (584 mm)	11" (279 mm)	21" (533 mm)	2	
2425100100	Gray, Gray								
2425100150	Gray, Maple								
2715155150	Champagne, Maple	24" (610 mm)	15" (381 mm)	10 3/4" (273 mm)	16" (406 mm)	11" (279 mm)	24" (610 mm)	1	
2715100150	Gray, Maple								
2715100100	Gray, Gray								
3015155150	Champagne, Maple	27" (686 mm)	15" (381 mm)	10 3/4" (273 mm)	16" (406 mm)	11" (279 mm)	27" (686 mm)	1	
3015100100	Gray, Gray								
3015100150	Gray, Maple								

I-MOVE RETRACTABLE SYSTEM FOR FRAMELESS CABINET

PRODUCT	FINISH	PRODUCT DIMENSIONS			MIN. INTERIOR DIMENSIONS REQUIRED		NUMBER OF SHELVES	QTY. BOX
		WIDTH	HEIGHT	DEPTH	HEIGHT	DEPTH		
2410100100	Gray, Gray	22 1/2" to 22 3/4" (571 to 578 mm)	15"	10 3/4" (273 mm)	16"	11" (279 mm)	1	1
2410100150	Gray, Maple		(381 mm)		(406 mm)		1	
2420100100	Gray, Gray		22 1/4"		23"		2	
2420100150	Gray, Maple		(565 mm)		(584 mm)		2	
3010100100	Gray, Gray	28 1/2" to 28 3/4"	15"	10 3/4"	16"	11"	1	
3010100150	Gray, Maple	(724 to 730 mm)	(381 mm)	(273 mm)	(406 mm)	(279 mm)	1	

DOOR FRAMES FOR TOP CUPBOARD

Door basket system for storing spices.

- Provides immediate access to the most frequently used products
- Clever assembly that releases the weight on the hinges
- Can be installed with a recessed door as well as a surface door
- Removable and height adjustable baskets (baskets sold separately in sets of three)
- Available in three widths suitable for the majority of cabinet sizes

PRODUCT	FINISH	PRODUCT DIMENSIONS - DEPTH	INTERIOR DIMENSIONS REQUIRED			QTY/BOX
			WIDTH	HEIGHT	DEPTH	
2411155	Champagne	6 3/4" (172 mm)	11 5/8" (295 mm)	27 1/2" (699 mm)	8 1/2" (216 mm)	1
2414155			14 5/8" (371 mm)			
2417155			17 5/8" (448 mm)			

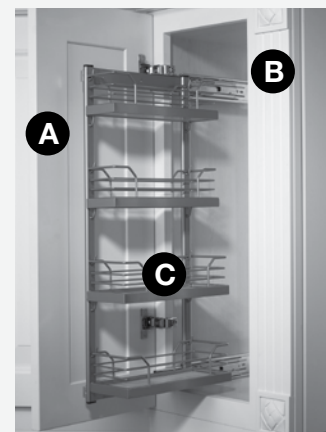
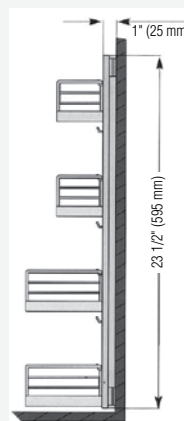


DREAM MAPLE UPPER CABINET PULL-OUT

This sliding basket system is ideal for storing spices, oils, cans, and bottles. Mounting easily to the side of the cabinet, this frame can incorporate up to four Arena shelves for maximum storage.

- Shelves can be adjusted in height
- Each shelf features a non-slip melamine surface in maple finish
- Chrome railing offers great visibility
- Interior dimensions required
- Load rating: up to 55 lb (25 kg)

Important: For face frame cabinets, order two spacers (458240100 or 455670100)



REF.	PRODUCT	DESCRIPTION	FINISH	PRODUCT DIMENSIONS			MIN. INTERIOR DIMENSIONS REQUIRED			QTY/BOX
				WIDTH	HEIGHT	DEPTH	WIDTH	HEIGHT	DEPTH	
New! A	2579100	Frame-Reversible	Maple/Chrome	-	-	-	4 1/2" (114 mm)	23 1/2" (596 mm)	10 1/4" (260 mm)	1
	2579155		Maple/Champagne	-	-	-				
B	2578100	Slides for Upper Pull-Out	Maple/Chrome	-	-	-				1 pair
New! C	2581140150	Arena Baskets	Maple/Chrome	3"	2 3/4"	9 7/8"				2
	2581155150		Maple/Champagne	(76 mm)	(69 mm)	(250 mm)				
	2582140150		Maple/Chrome	5"	2 3/4"	9 7/8"				
	2582155150		Maple/Champagne	(127 mm)	(69 mm)	(250 mm)				

Suggested product(s):

PRODUCT	DESCRIPTION
60285012	Drawer slide Side Spacer (25 mm)
458240100	Spacer for framed cabinets

PILASTER FOR DRAWER SYSTEM

- Equipped with BLUMOTION soft-close mechanism slides
- Easily adjustable drawer height locations for storing tall and short items
- Stackable for use in a pantry applications
- Tall drawer features pegboard bottom

Application:

- Designed to fit into 18" (457 mm) or 24" (610 mm) wide cabinets
- For base cabinets or full height cabinets
- Can be stacked in a pantry unit application

Important: pull-out wood drawers sold separately to be mounted on pilasters

PRODUCT	FINISH	PRODUCT DIMENSIONS			MIN. INTERIOR DIMENSIONS REQUIRED			QTY/BOX
		WIDTH	HEIGHT	DEPTH	WIDTH	HEIGHT	DEPTH	
4PIL211	Brown	1" (25 mm)	21" (533 mm)	1" (25 mm)	3/8" (10 mm)	21 1/4" (540 mm)	3/8" (10 mm)	1
4PIL2110								10
4PIL21SV1	Silver	1" (25 mm)	21" (533 mm)	1" (25 mm)	3/8" (10 mm)	21 1/4" (540 mm)	3/8" (10 mm)	1
4PIL21SV10								10

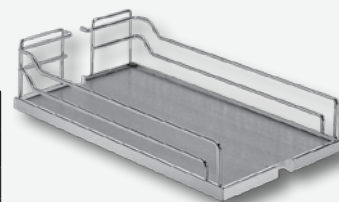
Required product(s):

PRODUCT	DESCRIPTION
4PIL18SC2	Complete pull-out drawer system
4WDB4PIL18SC1	Wood drawers and slides for drawer system



ARENA BASKETS FOR DISPENSA ARENA US SYSTEM

- Arena anti-slip baskets available in a maple or gray finish with a high-quality chrome or champagne frame
- The structure is perfectly sealed to the shelf, providing protection against water penetration and humidity
- Depending on the opening width, these baskets can be adapted to framed or frameless cabinets



	PRODUCT	FINISH	PRODUCT DIMENSIONS			INTERIOR DIMENSIONS REQUIRED - DEPTH	MINIMUM OPENING WIDTH	QTY/BOX
			WIDTH	HEIGHT	DEPTH			
	33140100	Gray, Chrome						
New!	33155150	Maple, Champagne	4" (102 mm)	4 1/8" (105 mm)	20 3/8" (518 mm)	22 1/16" (560 mm)	4 1/2" (114 mm)	1
	33140150	Maple, Chrome						
	24140100	Gray, Chrome						
New!	24155150	Maple, Champagne	5" (127 mm)	4 1/8" (105 mm)	20 3/8" (518 mm)	22 1/16" (560 mm)	4 1/2" (114 mm)	
	24140150	Maple, Chrome						
	34140100	Gray, Chrome						
New!	34155150	Maple, Champagne	7" (178 mm)	4 1/8" (105 mm)	20 3/8" (518 mm)	22 1/16" (560 mm)	4 1/2" (114 mm)	
	34140150	Maple, Chrome						
	25140100	Gray, Chrome						
New!	25155150	Maple, Champagne	8" (203 mm)	4 1/8" (105 mm)	20 3/8" (518 mm)	22 1/16" (560 mm)	4 1/2" (114 mm)	
	25140150	Maple, Chrome						
	35140100	Gray, Chrome						
New!	35155150	Maple, Champagne	10" (254 mm)	4 1/8" (105 mm)	20 3/8" (518 mm)	22 1/16" (560 mm)	4 1/2" (114 mm)	
	35140150	Maple, Chrome						
	26140100	Gray, Chrome						
New!	26155150	Maple, Champagne	11" (279 mm)	4 1/8" (105 mm)	20 3/8" (518 mm)	22 1/16" (560 mm)	4 1/2" (114 mm)	
	26140150	Maple, Chrome						
	241155150	Maple, Champagne	11 1/8" (283 mm)	3 1/2" (89 mm)	6 3/4" (172 mm)	8 1/2" (216 mm)	11 5/8" (295 mm)	
	36140100	Gray, Chrome						
New!	36155150	Maple, Champagne	13" (330 mm)	4 1/8" (105 mm)	20 3/8" (518 mm)	22 1/16" (560 mm)	4 1/2" (114 mm)	
	36140150	Maple, Chrome						
	27140100	Gray, Chrome						
New!	27155150	Maple, Champagne	14" (356 mm)	4 1/8" (105 mm)	20 3/8" (518 mm)	22 1/16" (560 mm)	4 1/2" (114 mm)	
	27140150	Maple, Chrome						
	242155150	Maple, Champagne	14 1/8" (359 mm)	3 1/2" (89 mm)	6 3/4" (172 mm)	8 1/2" (216 mm)	14 5/8" (371 mm)	
	37140100	Gray, Chrome						
New!	37155150	Maple, Champagne	16" (406 mm)	4 1/8" (105 mm)	20 3/8" (518 mm)	22 1/16" (560 mm)	4 1/2" (114 mm)	
	37140150	Maple, Chrome						
	28140100	Gray, Chrome						
New!	28155150	Maple, Champagne	17" (432 mm)	4 1/8" (105 mm)	20 3/8" (518 mm)	22 1/16" (560 mm)	4 1/2" (114 mm)	
	28140150	Maple, Chrome						
	38140100	Gray, Chrome						
New!	38155150	Maple, Champagne	19" (483 mm)	4 1/8" (105 mm)	20 3/8" (518 mm)	22 1/16" (560 mm)	4 1/2" (114 mm)	
	38140150	Maple, Chrome						
	39140100	Gray, Chrome						
New!	39155150	Maple, Champagne	20" (508 mm)	4 1/8" (105 mm)	20 3/8" (518 mm)	22 1/16" (560 mm)	4 1/2" (114 mm)	
	39140150	Maple, Chrome						
	40140100	Gray, Chrome						
New!	40155150	Maple, Champagne	22" (559 mm)	4 1/8" (105 mm)	20 3/8" (518 mm)	22 1/16" (560 mm)	4 1/2" (114 mm)	
	40140150	Maple, Chrome						

Required product(s):

PRODUCT	DESCRIPTION
24160100	Frames for Dream Maple Dispensa system

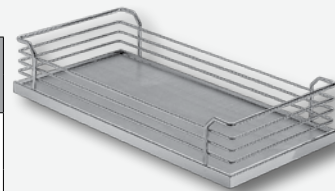
Suggested product(s):

PRODUCT	DESCRIPTION
74260100	Frame, Door Mounting Brackets, and Slides for Dispensa system

ARENA BASKETS FOR DREAM MAPLE TANDEM DEPOT SYSTEM

Set of 4 Arena anti-slip baskets for Tandem Depot systems.

PRODUCT	FINISH	PRODUCT DIMENSIONS			INTERIOR DIMENSIONS REQUIRED			MINIMUM OPENING WIDTH	QTY/ BOX
		WIDTH	HEIGHT	DEPTH	WIDTH	HEIGHT	DEPTH		
2527140100	Gray, Chrome	14 7/8"	3"	12"	16 1/2"	45 1/2"	22 1/2 to 24"	15"	4
2527140150	Maple, Chrome	(378 mm)	(76 mm)	(305 mm)	(419 mm)	(1143 mm)	(571 to 610 mm)	(381 mm)	
2528140100	Chrome, Gray	17 7/8"	3"	12"	19 1/2"	45 1/2"	22 1/2 to 24"	18"	
2528140150	Maple, Chrome	(454 mm)	(76 mm)	(305 mm)	(495 mm)	(1143 mm)	(571 to 610 mm)	(457 mm)	
2529140100	Chrome, Gray	20 7/8"	3"	12"	22 1/2"	45 1/2"	22 1/2 to 24"	21"	
2529140150	Maple, Chrome	(530 mm)	(76 mm)	(305 mm)	(571 mm)	(1143 mm)	(571 to 610 mm)	(533 mm)	



Required product(s):

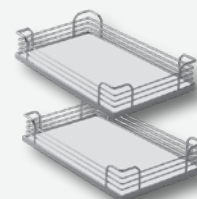
PRODUCT	DESCRIPTION
2663100	Frame for Dispensa Junior base cabinet system
24160100	Frames for Dream Maple Dispensa system

ARENA BASKETS FOR MAGIC CORNER

Set of 2 Arena anti-slip baskets for the Magic Corner system. Melamine with maple or gray finish and chrome or champagne railing.

- 2556140150 is a set of 2 baskets for the front
- 2557140150 is a set of 2 baskets for the back

PRODUCT	FINISH	PRODUCT DIMENSIONS			MIN. INTERIOR DIMENSIONS REQUIRED			OPENING WIDTH	QTY/ BOX
		WIDTH	HEIGHT	DEPTH	WIDTH	HEIGHT	DEPTH		
2556140100	Gray, Chrome	18 1/2"	3 1/2"	12"	38 9/16" to 43 7/8"	21 1/16"	21 9/16"	17 3/4" to 23 5/8"	1
2556140150	Maple, Chrome	(470 mm)	(89 mm)	(305 mm)	(979 to 1115 mm)	(535 mm)	(548 mm)	(451 to 600 mm)	
2556155150	Maple, Champagne								
2557140100	Gray, Chrome	18 1/2"	3 1/2"	15 3/8"	38 9/16" to 43 7/8"	21 1/16"	21 9/16"	17 3/4" to 23 5/8"	
2557140150	Maple, Chrome	(470 mm)	(89 mm)	(391 mm)	(979 to 1115 mm)	(535 mm)	(548 mm)	(451 to 600 mm)	
2557155150	Maple, Champagne								

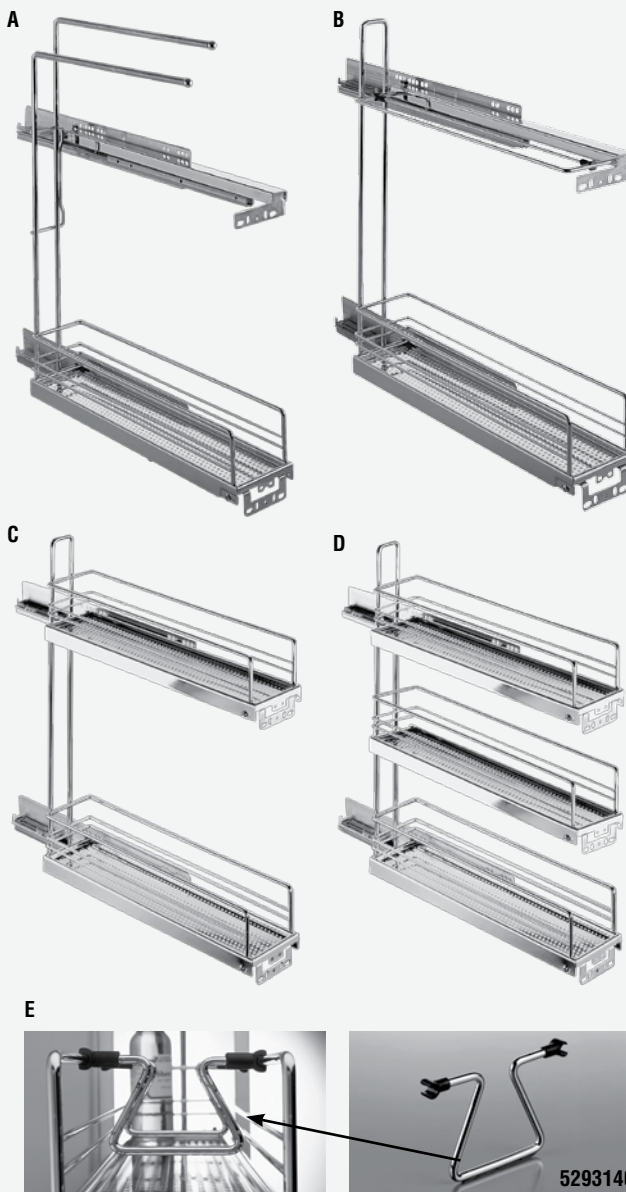


METAL SLIDING BASKETS FOR BASE CABINETS

- Ideal for narrow cabinet
- Full extension - reaches to right side of cabinet and to the cabinet door
- Pulls out with cabinet door
- Equipped with Softstop system (shock-absorbing mechanism) for a smooth and silent closing
- The towel bar comes with a non-skid coating to keep towels in place

REF.	PRODUCT	DESCRIPTION	FINISH	MIN. INTERIOR DIMENSIONS REQUIRED			QTY/BOX
				WIDTH	HEIGHT	DEPTH	
A	115399140	Sliding basket with towel bar	Chrome	4 7/16" (112 mm)	23 1/4" (590 mm)	19" (481 mm)	1
B	115400140	Sliding basket with plate div.			23 1/4" (590 mm)		
C	15297140	Sliding basket with 2 shelves	Gray		21 1/4" (540 mm)		
	15297100						
D	15298140	Sliding basket with 3 shelves	Chrome	29 3/4" (755 mm)			
E	5293140	Divider for basket		-	-	-	

New!



15297140



115399140



115400140

1
SCREWS
AND
FASTENERS

2
FURNITURE
EQUIPMENT

3
HINGES

4
SLIDES

5
CASTERS
AND LEGS

6
KITCHEN
SOLUTIONS

7
CLOSET
SOLUTIONS

8
LIGHTING
SOLUTIONS

9
SINKS
AND
FAUCETS

10
OFFICE

11
SLIDING
DOORS

12
GLASS
HARDWARE

13
PANELS
AND
SURFACES

14
EDGE-
BANDING

15
CABINET
DOORS
AND
DRAWERS

16
CORBELS
AND FLOOR
REGISTERS

17
GLUES,
SILICONES,
CAULK AND
INSULATING

18
TOOLS
AND
SECURITY

19
FINISHING
PRODUCTS
AND SHOP
SUPPLIES

20
COMMERCIAL
DISPLAY
HARDWARE

21
MOLDING,
RAILING AND
BATHROOM
HARDWARE

FASTENING BUTTONS FOR 4PIL SERIES

Metal Fastener Pilaster Button Set for 4PIL series slides.

Sold in set of 4

PRODUCT	QTY/BOX
4PILBUTTON12	1

Suggested product(s):

PRODUCT	DESCRIPTION
4PIL21SV1	Pilaster for drawer system



FRAME WITH BRACKET FOR METAL BASKET AT 90°

Side-mount pull-out frame equipped with an integrated soft-close device.

Included: Frame and two 90° door brackets

Sold by unit

PRODUCT	CAPACITY	FINISH	MIN. INTERIOR DIMENSIONS REQUIRED		OPENING	QTY/BOX
			HEIGHT	DEPTH		
517165100	53 lb (24 kg)	Gray	19 5/8" (499 mm)	19 1/16" (485 mm)	Left Side	20
517166100					Right Side	1
517169100			23 1/2" (597 mm)	19 1/16" (485 mm)	Left Side	1
517170100					Right Side	
517173100			26 1/8" (663 mm)	19 1/16" (485 mm)	Left Side	20
517174100					Right Side	

New!

Requires ONE of the following products:

PRODUCT	DESCRIPTION
6085140	Standard basket in thick wire
6085140	Arena basket for base cabinet sliding system
6085140	Standard basket

Suggested product(s):

PRODUCT	DESCRIPTION
60285012	Drawer slide side spacer
458240100	Spacer for framed cabinets



WATER LEAK DETECTOR

Ideal for under-sink cabinets, this device triggers an audible signal whenever there is a water leak.

- Powerful alarm signal of 95 dB that sounds up to 24 hours
- Activates automatically when in contact with water
- Fully automatic operation, no wiring required
- Internal battery that lasts up to 3 years after which the complete unit must be replaced

Applications: sink base cabinets, toilet bases, behind dishwashers, refrigerators and washing machines, near water heaters, sump pumps and more...

Sold by unit

PRODUCT	FINISH	WIDTH	HEIGHT	QTY/BOX
1219930	White	1 25/32" (45 mm)	1 3/8" (35 mm)	144



K-WASTE BIN

PRODUCT	CAPACITY	FINISH	PRODUCT DIMENSIONS			INTERIOR DIMENSIONS REQUIRED - HEIGHT	QTY/BOX
			WIDTH	HEIGHT	DEPTH		
51012155	36 qt (34 L)	Champagne	14 1/2" (368 mm)	17 1/2" (444 mm)	11" (279 mm)	18" 457 mm)	1
51012100		Gray					
5101230		White					
51052155	52 qt (49.2 L)	Champagne	14 1/2" (368 mm)	22 7/8" (581 mm)	11" (279 mm)	23" (584 mm)	
51052100		Gray					
5105230		White					



TWISTER DREAM SHELF KIT

Weight capacity per shelf: 18 lb (8.2 kg)

PRODUCT	FINISH	Ø	MIN. INTERIOR DIMENSIONS REQUIRED		NUMBER OF SHELVES	QTY/BOX
			HEIGHT	DEPTH		
2561140100	Chrome/Gray	19 11/16" (500 mm)	25 15/16" to 28 7/8" (659 to 734 mm)	22 1/8" (562 mm)	2	1
2561155150	Maple/Champagne	19 11/16" (500 mm)	25 15/16" to 30 1/2" (659 to 775 mm)	22 1/8" (562 mm)	2	
2562140100	Chrome/Gray	19 11/16" (500 mm)	32" to 36 1/2" (813 to 927 mm)	22 1/8" (562 mm)	3	
2562155150	Maple/Champagne	19 11/16" (500 mm)	32" to 36 1/2" (813 to 927 mm)	22 1/8" (562 mm)	3	
2591140100	Chrome/Gray	19 11/16" (500 mm)	38 to 42 1/2" (965 to 1080 mm)	22 1/8" (562 mm)	3	
2591155150	Maple/Champagne	19 11/16" (500 mm)	38 to 42 1/2" (965 to 1080 mm)	22 1/8" (562 mm)	3	



FOODWRAP DISPENSER

Dispensing system that keeps plastic or foil wrap ready at your finger tips. Distributor allows you to access your aluminum foil with ease by having it at the tip of your fingers in the blink of an eye.

PRODUCT	FINISH	PRODUCT DIMENSIONS			QTY/BOX
		WIDTH	HEIGHT	DEPTH	
4FWI16SS1	Stainless Steel	3 7/16" (87 mm)	2 5/8" (67 mm)	16" (406 mm)	1



EURO-CARGO RECYCLING CENTERS

The Euro-Cargo pull-out sliding wastebin system is designed to be removed from the cabinet while the lid remains inside for use as a shelf.

- Full-extension slides with soft-motion system
- Designed for cabinets with sides either 5/8" or 3/4" (16 or 19 mm) in thickness
- Bin equipped with handles for easy removal and cleaning (lid included)
- Very sturdy-slides are tested to 100,000 openings
- Mounting brackets included allow to open cabinet door and pull out the recycling center in a single motion
- Load Rating: 110 lb (50 kg)

32 QT (30L) SIDE-MOUNT EURO-CARGO RECYCLING CENTERS

PRODUCT	CAPACITY	FINISH	MIN. INTERIOR DIMENSIONS REQUIRED			SOFT-MOTION SYSTEM	QTY/ BOX
			WIDTH	HEIGHT	DEPTH		
361412100	32 qt (30 L)	Gray	Min. 10 1/2 to 10 3/4" (267 to 273 mm)	Min. 17-5/8" (447 mm)	Min. 17" (433 mm)	With	1
461912100			Min. 10 3/8 to 10 1/2" (262 to 268 mm)	Min. 21-1/2" (545 mm)	Min. 20 3/4" (528 mm)		

Suggested product(s):

PRODUCT	DESCRIPTION
361330100	Euro-Cargo bins



47.6 QT (45 L) TOP-MOUNT EURO-CARGO RECYCLING CENTERS

PRODUCT	CAPACITY	FINISH	MIN. INTERIOR DIMENSIONS REQUIRED			SOFT-MOTION SYSTEM	QTY/ BOX
			WIDTH	HEIGHT	DEPTH		
361430100	1 x 40 qt (38 L) +1 x 7 qt (7 L)	Gray	10 1/2" (268 mm)	22" (559 mm)	18 3/4" (477 mm)	Without	1
461435100			12 1/4 to 12 1/2" (312 to 318 mm)	Min. 21 1/2" (546 mm)	Min. 20 7/8" (530 mm)	With	
461440100			14 1/4 to 14 1/2" (362 to 368 mm)			With	
461935100			12 1/4 to 12 1/2" (312 to 318 mm)	21 1/2" (545 mm)	20 3/4" (528 mm)	With	
461940100			14 1/4 to 14 1/2" (362 to 368 mm)			With	

Suggested product(s):

PRODUCT	DESCRIPTION
361330100	Euro-Cargo bins
361407100	



64 QT (60 L) SIDE-MOUNT EURO-CARGO RECYCLING CENTER

PRODUCT	CAPACITY	FINISH	MIN. INTERIOR DIMENSIONS REQUIRED			SOFT-MOTION SYSTEM	QTY/ BOX
			WIDTH	HEIGHT	DEPTH		
461062100	2 x 32 qt (30 L)	Gray	Min. 22 3/8" (568 mm)	16 3/4" (427 mm)	17 5/8" (448 mm)	With	1



80.3 QT (76 L) TOP-MOUNT EURO-CARGO RECYCLING CENTERS

PRODUCT	CAPACITY	FINISH	MIN. INTERIOR DIMENSIONS REQUIRED			SOFT-MOTION SYSTEM	QTY/ BOX
			WIDTH	HEIGHT	DEPTH		
361450100	2 x 40.1 qt (38 L)	Gray	18 1/4 to 18 3/8" (462 mm to 468 mm)	Min. 21 1/2" (545 mm)	Min. 20 3/4" (528 mm)	Without	1
3614100						Without	
4614910		Dark Gray	16 1/4 to 16 1/2" (412 to 418 mm)	21 1/2" (545 mm)	20 7/8" (530 mm)	With	
4614100		Gray	18 1/4 to 18 3/8" (462 to 468 mm)				
461450100		Dark Gray	16 1/4 to 16 1/2" (412 to 468 mm)			With	
4619910						With	
4619100		Gray	18 1/4 to 18 3/8" (462 to 468 mm)		20 3/4" (528 mm)	With	
461950100						Without	
3619100	Gray	16 1/4 to 16 1/2" (412 to 418 mm)					



95.6 QT (90.5 L) TOP-MOUNT EURO-CARGO RECYCLING CENTERS

PRODUCT	CAPACITY	FINISH	MIN. INTERIOR DIMENSIONS REQUIRED			SOFT-MOTION SYSTEM	QTY/ BOX
			WIDTH	HEIGHT	DEPTH		
461960100	2 x 37 qt (38 L), 1 x 13 qt (12 L), 1 x 3 qt (2.5 L)	Gray	22 1/8 to 22 3/8" (562 to 568 mm)	21 1/2" (545 mm)	20 3/4" (528 mm)	With	1
New! 461960910		Dark Gray					
361960100		Gray				Without	



98.3 QT (93 L) TOP-MOUNT EURO-CARGO RECYCLING CENTERS

PRODUCT	CAPACITY	FINISH	MIN. INTERIOR DIMENSIONS REQUIRED			SOFT-MOTION SYSTEM	QTY/ BOX
			WIDTH	HEIGHT	DEPTH		
461460100	2 x 38 qt (38 L)	Gray	22 1/8 to 22 3/8" (562 to 568 mm)	Min. 21 1/2" (545 mm)	20 3/4" (528 mm)	With	1
361460100	2 x 9 qt (8.5 L)					Without	



MAXI METAL WASTEBIN

- Easy to install starting from an interior width clearance of 16 3/8" (415 mm)
- Metal edge with clip-on allowing to remain firmly in place the plastic bag
- Once the door opens, the lid remains and makes the container entirely accessible
- Reversible container settles either on the left or on the right side

Application: Ideal for base and under-sink cabinets

PRODUCT	CAPACITY	FINISH	MIN. INTERIOR DIMENSIONS REQUIRED			OPENING TYPE	QTY/BOX
			WIDTH	HEIGHT	DEPTH		
24335110	34 qt (32 L)	Dark Gray	16 3/8" (415 mm)	19 5/8" (500 mm)	13 3/8" (340 mm)	With the door	1



MULTI-USE WHITE BINS

Versatile plastic bins that allow you to design your own sliding recycling center, or simply place them in your under-sink cabinet and even in a deep drawer.

- Used for storage organization or waste management
- Perfect for a drawer with a depth of 12" (305 mm) min.
- Available in 3 dimensions: 7, 11 or 30 liters
- 7-liter bin cover (971730) is available and sold separately, making it an ideal compost bin

Sold by unit

PRODUCT	CAPACITY	FINISH	PRODUCT DIMENSIONS			QTY/BOX
			WIDTH	HEIGHT	DEPTH	
970730	7.4 qt (7 L)	White	8 1/2" (216 mm)	12 1/4" (311 mm)	6 1/4" (159 mm)	10
971130	11.6 qt (11 L)		9 1/2" (241 mm)	12 1/2" (318 mm)	8 3/4" (222 mm)	
970030	31.7 qt (30 L)		16 3/4" (426 mm)	12" (305 mm)	11 1/2" (292 mm)	

Suggested product(s):

PRODUCT	DESCRIPTION
971730	Cover for 7-Liter bin



RICHELIEU OIL AND CONDITIONER FOR WOOD SURFACES

Ideal for conditioning and maintaining all wooden butcher blocks, cutting boards, wooden bowls, and utensils.

- Protects and enhances the wood's natural grain
- Made of 100% natural and pure mineral oil
- Odorless
- No aftertaste
- Safe for food preparations
- Easy wiping method application
- Restores the wood's humidity
- Prolongs the life of your cutting boards and counters

Sold by unit

PRODUCT	FINISH	QTY/BOX
1050000	16.9 oz (500 ml)	12



APPLICATION KIT FOR WOOD SURFACES

Protective oil application kit for wood surfaces such as cutting boards, butcher's blocks, wood utensils, etc.

- The lint-free cloths ensure an even application
- Allows for a maximum absorption of the wood
- Creates a superior finish

Included: 2 lint-free cloths, 1 sponge, and 1 pair of vinyl gloves

Sold by unit

PRODUCT	PRODUCT DIMENSIONS			QTY/BOX
	WIDTH	HEIGHT	DEPTH	
1224000	5 1/2" (140 mm)	7" (178 mm)	1" (25 mm)	48

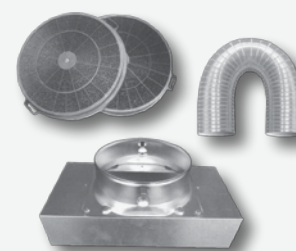


INTERNAL CONVERSION KIT

Non-ducted models require no external exhaust duct assembly, as the air is recycled into the room through a metallic filter that retains grease and a charcoal filter that purifies the air. Once the odor is removed, air is released into the room. Perfect for apartments.

Included: Internal conversion box, a pipe, and 2 charcoal filters

PRODUCT	DESCRIPTION	QTY/BOX
5251181100	Inside Conversion Kit	1
5601143100	Inside Conversion Kit	
52010100	Inside Conversion Kit/Wall Pyramid	
52020100	Inside Conversion Kit Hood with Glass	



ALUMINIUM REPLACEMENT FILTER FOR RANGE HOOD

- Charcoal and fiberglass filter captures and retains airborne grease
- Absorbs unpleasant odours to neutralize them
- Dishwasher safe

PRODUCT	FINISH	PRODUCT DIMENSIONS		QTY/BOX
		WIDTH	DEPTH	
54007100	Aluminum	7 1/8" (181 mm)	9 7/8" (251 mm)	1
5252141100	Aluminum	9" (229 mm)	10 1/8" (257 mm)	
5252181100			10 1/8" (257 mm)	
56004100			10 3/16" (259 mm)	
56503100			10 3/16" (259 mm)	
5602143100	Aluminum	10 5/8" (270 mm)	12 1/2" (318 mm)	
53009100			13 1/4" (337 mm)	
52608100	Aluminum	11" (279 mm)	13 3/8" (340 mm)	
54010100			13 3/8" (340 mm)	
52005100	Aluminum	12 1/2" (318 mm)	13" (330 mm)	
52905100	Aluminum	13 1/4" (337 mm)	12 5/8" (321 mm)	
5502280100	Aluminum	13 5/8" (346 mm)	13 3/4" (349 mm)	
55002100			13 3/4" (349 mm)	
5502215100	Aluminum	13 3/4" (349 mm)	13 1/16" (332 mm)	
55627100			13 7/8" (353 mm)	

Suggested product(s):

PRODUCT	DESCRIPTION
5251141170	Stainless steel pyramid-style hood with electronic control



CHIMNEY EXTENSIONS FOR HOOD

Chimney extension designed for use where a ceiling reaches 10' (3.05 m) in height.

PRODUCT	DESCRIPTION	QTY/BOX
50436170	Chimney Extension Rectangular	1
5252181170	Chimney Extension Rectangular	
5602143170	Chimney Extension Rectangular	
50130170	Chimney Extension Narrow	
50236170	Chimney Extension Wide	
50336170	Chimney Extension Island	



Suggested product(s):

PRODUCT	DESCRIPTION
53036170	Stainless Steel Rectangular Hood - 36" (914 mm)

30' RETRACTABLE HOSE KIT

Compatible with most central vacuum units available on the market.

Now you can eliminate carrying a bulky hose up and down stairs or from room to room. (No storing it either!) Simply pull out the length of hose needed for the job, connect your choice of attachment and begin vacuuming.

- System hides the hose in your wall; it is just that easy
- No carrying or storing a bulky hose again
- Elbows (90 & 45 degree)
- Horse hair tools
- Air driven brush
- Regular HAH handle

Included:

- Retractable hose system with air driven carpet beater and installation kit
- 30' (9.14 m) length hose
- Low voltage wire
- Telescopic wand
- Deluxe accessories bag
- Upholstery brush
- Floor brush
- Crevices tool
- Valve rough-in installation kit
- Valve glue



PRODUCT	QTY/BOX
16110530	1

Suggested product(s):

PRODUCT	DESCRIPTION
1613130	Padded zippered hose cover

30' ELECTRIC HOSE CENTRAL VACUUM KIT

Compatible with most central vacuum units available on the market.

High-voltage stainless-steel telescopic wand with a direct-connect system. Additional adjustable stainless-steel wand with button lock.

- Can be used on linoleum, ceramic, wood and carpet
- Auto-stop clogging technology
- German-made carpet beater with slim profile
- Slim Profile carpet beater made for cleaning under low furniture

Included:

- 30' (9.14 m) Electric hose
- ON-OFF high-voltage carrying hose with pigtail
- 12" horsehair brush, with straight cut bristles
- Deluxe horsehair dusting brush
- Upholstery brush
- Tool for cleaning cracks and crannies
- Deluxe accessory holder bag
- Chrome hose hanger



PRODUCT	QTY/BOX
16110630280	1

PADDED ZIPPERED HOSE COVER

The hose cover slips over your vacuum hose to protect your hose and home from any damages while vacuuming. Available in 30' and 35' (9.14 and 10.67 m) length.

- Machine washable
- The hose cover protects your furniture, floors, walls, and molding from scratches, chips, and dents while using your central vacuum hose
- Easy to keep clean
- Easy to install
- Universal

PRODUCT	LENGHT	QTY/BOX
1613130	30' (9.14 m)	1
1613135	35' (10.67 m)	



30' ELECTRIC REPLACEMENT HOSE

Compatible with most central vacuum unit available on the market.

Tired of lugging your hose up and down flights of stairs? Add Richelieu's 30' (9.14 m) electric hose to one of your floors and save yourself the time and hassle.

- 110-120V, on-off hose
- Fits into most inlets
- 30' (9.14 m) hose can cover up to 950 square feet
- Optional accessory item 1613130 vacuum hose cover, gray with zipper for ease of installation

PRODUCT	LENGHT	QTY/BOX
16120330	30' (9.14 m)	1

Also available in 35' and 40' lengths on special order



T-TABLE XL TABLE EXTENSION MECHANISM

Functional side table, ready instantly.

- Optimizes space in a small kitchen
- Hidden in a cabinet when not in use (takes the space normally used by a drawer)
- Double solution when combined with the extensible T-Bench (4117194510)
- Designed to be installed in a cabinet with an exterior width of 23 5/8" (600 mm)
- Sturdy, extensible, and collapsible steel legs
- The back panel is fixed
- Convenient for widths of 23 5/8" (600 mm)
- Approximate total extension of the table: 51 9/16" (1310 mm)

Lateral panel thickness varies between 19/32" (15 mm) and 25/32" (20 mm), spacers are included to adjust the mechanism to the interior width.

PRODUCT	FINISH	MIN. INTERIOR DIMENSIONS REQUIRED				LOAD CAPACITY	QTY/BOX
		WIDTH	HEIGHT	DEPTH	EXTENSION		
4119292210	Anodized	22 1/8" to 22 3/8" (562 to 568 mm)	4 23/32" (120 mm)	21 1/4" (540 mm)	31 1/8" (789 mm mm)	220 lb (100 kg)	1
4119192210	Aluminium			20 1/2" (520 mm)	51 5/8" (1 310 mm)		

The top panel of the table must be made by the client.



T BENCH

Extendable bench with T-shaped foldable leg.

- There is no better way to optimize space in a smaller kitchen
- Easy-to-use: pull it out, unfold the leg and you're all set
- Interesting solution for an entry hall, and will make your life easier when putting on or removing shoes

PRODUCT	FINISH	MIN. INTERIOR DIMENSIONS REQUIRED				LOAD CAPACITY	QTY/BOX
		WIDTH	HEIGHT	DEPTH	EXTENSION		
4119194510	Anodized Aluminium	16 1/8" to 16 1/2" (410 to 420 mm)	4 11/32" (110 mm)	21 1/4" (540 mm)	34 1/4" (870 mm)	220 lb (100 kg)	1



VERSOTO EXTENDING TABLE MECHANISM

When closed, this set is contained inside a suspended cabinet. When opened, it creates a 63" (1600 mm) table. The integrated telescopic leg ensures a load capacity of 220 lb (100 kg).

PRODUCT	FINISH	MIN. INTERIOR DIMENSIONS REQUIRED				LOAD CAPACITY	QTY/BOX
		WIDTH	HEIGHT	DEPTH	EXTENSION		
4119412010	Anodized Aluminium	44 1/2" (1 131 mm)	6 7/8" (175 mm)	20 1/8" (510 mm)	61 1/2" (1 562 mm)	220 lb (100 kg)	1

Mechanism only; wood parts are not included and must be provided by the user.



PARTY SLIDING TABLE MECHANISM FOR DRAWER

This extension table is a revolutionnary solution in the small spaces organization.

- Suitable for 24" (610 mm) or 36" (915 mm) cabinet width
- Aluminum slides with a high weight capacity of 220 lbs (100 kg) evenly distributed
- Sturdy aluminum leg, extendable and foldable
- The 3 top panels fold on themselves with hidden hinges included
- Total extension reaching approximately 57" (1446 mm)

PRODUCT	FINISH	PRODUCT DIMENSIONS - HEIGHT	INTERIOR DIMENSIONS REQUIRED				QTY/BOX
			WIDTH	HEIGHT	DEPTH	EXTENSION	
411952410	Anodized Aluminium	28 9/16" to 32 1/4" (725 to 820 mm)	22 1/2" (572 mm)	5 15/16" (150 mm)	22 1/16" (560 mm)	54 5/16" (1380 mm)	1
411953610	Anodized Aluminium		34 1/2" (876 mm)				



BUILT-IN ELECTRIC SWIVELING IRONING BOARDS

Rotatable inset ironing board in birch.

- Board measures 42" (1066 mm) in length
- Board cover and electrical plug and switch included (requires 115-120 V, 15 amps)

PRODUCT	FINISH	PRODUCT DIMENSIONS			MIN. INTERIOR DIMENSIONS REQUIRED			OPENING	QTY/ BOX
		WIDTH	HEIGHT	DEPTH	WIDTH	HEIGHT	DEPTH		
E42	Door - Birch	15" (381 mm)	47 7/8" (1216 mm)	7 3/4" (197 mm)	14 3/8" (365 mm)	47 1/8" (1197 mm)	3 7/8" (98 mm)	Right Hand	1
AE42	Maple Plating		52" (1321 mm)			51 1/4" (1302 mm)		Right Hand	
AE423								Left Hand	
E460325	Door - Oak		60 5/8" (1540 mm)			59 7/8" (1521 mm)		Left Hand	



BUILT-IN ELECTRIC IRONING BOARDS

- Installation dimensions: 14 1/4" x 3 7/8" x 47 1/8" (362 x 99 x 1196 mm)

PRODUCT	FINISH	PRODUCT DIMENSIONS			MIN. INTERIOR DIMENSIONS REQUIRED			OPENING	QTY/BOX
		WIDTH	HEIGHT	DEPTH	WIDTH	HEIGHT	DEPTH		
E4213	Maple Plating	15" (381 mm)	47 7/8" (1216 mm)	7 7/8" (200 mm)	14 1/4" (362 mm)	47 3/32" (1196 mm)	7 7/8" (200 mm)	Left Hand	1
E421	Maple Plating							Right Hand	
E342	Birch, Door - Birch							Right Hand	
E460203	Door - Birch, Cool Gray, Birch							Right Hand	

Suggested product(s):

PRODUCT	DESCRIPTION
001500	Cover and Pad for E342 Ironing Board



NON-ELECTRIC BUILT-IN IRONING BOARD

Built-in ironing board without light or electrical device.

- Installation dimensions: 14 1/4" x 4" x 51 1/4" (362 x 102 x 1302 mm)

PRODUCT	FINISH	PRODUCT DIMENSIONS				OPENING	QTY/BOX
		WIDTH	HEIGHT	DEPTH	BOARD LENGTH		
NE42	Maple Plating	15" (381 mm)	52" (1321 mm)	3 3/4" (95 mm)	42" (1067 mm)	Right Hand	1



ECONOMICAL IRONING BOARD

Economical wall-mounting ironing center. Ironing board measures 42" long.

- Mounts to the wall surface
- Birch veneer door comes unfinished so that you can apply the finish of your choice
- Installation dimensions: 14 1/4" x 4" x 51 1/4" (362 x 102 x 1302 mm)

PRODUCT	FINISH	PRODUCT DIMENSIONS				OPENING	QTY/BOX
		WIDTH	HEIGHT	DEPTH	BOARD LENGTH		
4242100	Maple Plating	15" (381 mm)	52" (1321 mm)	3 3/4" (95 mm)	42" (1067 mm)	Right Hand	1

Suggested product(s):

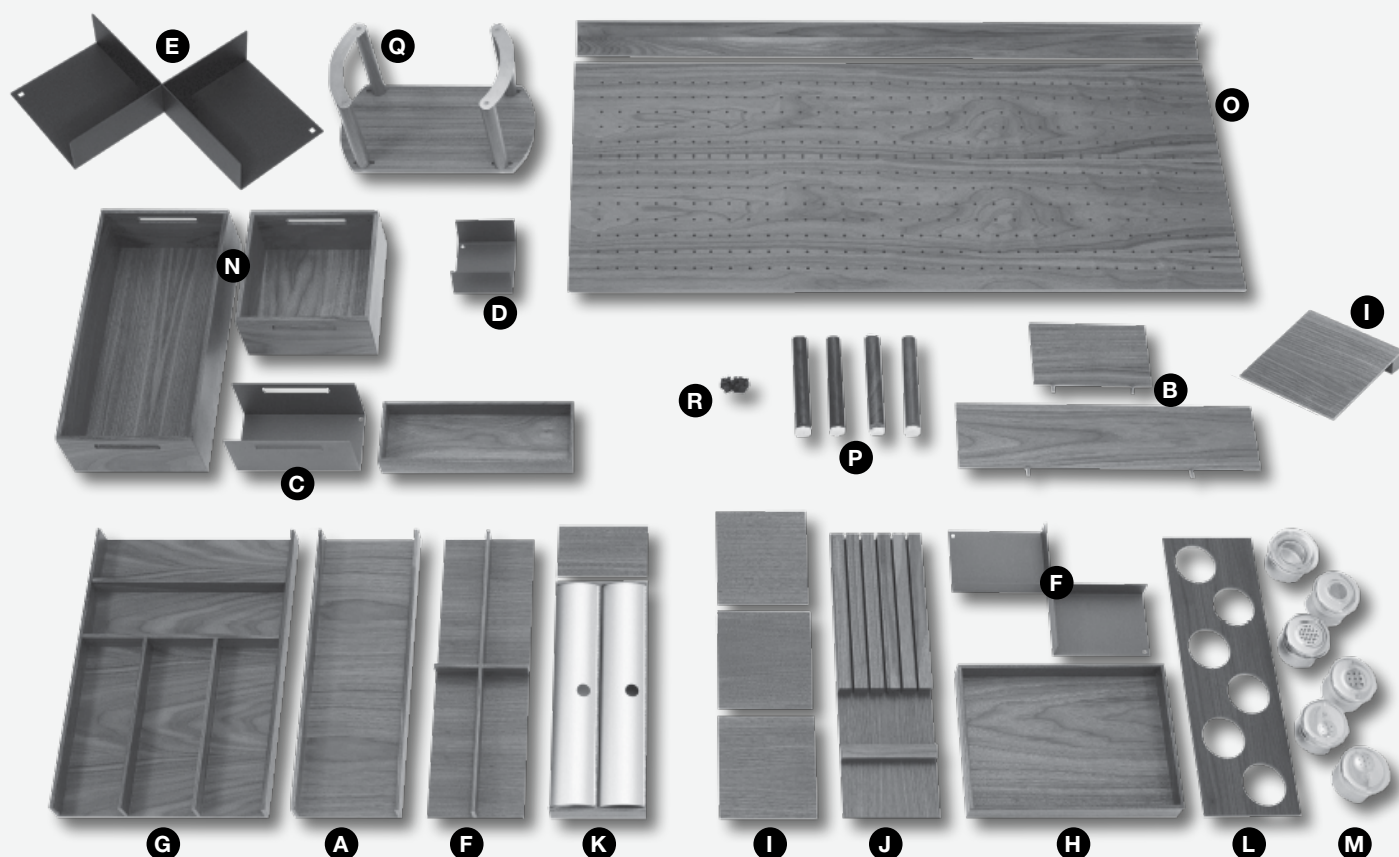
PRODUCT	DESCRIPTION
001500	Cover and Pad for 4242100 Ironing Board



STRAIGHTLINE MODULAR WOOD DIVIDER SYSTEM

Straightline offers versatile handcrafted products. They are elegant, but also the ideal products for any drawer organization. The best feature of Straightline is that these modular and variable elements can be combined in many different ways and fit into both straight and slanted drawer boxes.

- Countless possible combinations suitable for organization of any drawer size
- Accommodates variable drawer depths
- Most components are cuttable to size so adapts perfectly to any drawer sizes
- Connection clips secure dividers in place
- Easy installation
- Available in 2 trendy wood species; Walnut and Birch
- Also compatible with our Dispensa and Convoy Lavido pantry systems



REF.	PRODUCT	DESCRIPTION	FINISH	PRODUCT DIMENSIONS			QTY/BOX
				WIDTH	HEIGHT	DEPTH	
A	250530031	Multifunctional dividers	Birch	6"	1 11/16"	16 11/16"	91
	250530161		Walnut	(152 mm)	(43 mm)	(424 mm)	
B	250545031	Deep drawer dividers	Birch	7 1/2"	4 3/4"	15/32"	1
	250545161		Walnut	(190 mm)			
	250546031		Birch	18 13/16"			
	250546161		Walnut	(478 mm)			
C	250548910	Metal divider with handle	Graphite	7 5/8"	4"	3 7/8"	1
				(194 mm)	(102 mm)	(98 mm)	
D	250547910	Flat metal divider	Graphite	3 5/8"	1 7/16"	3 7/8"	1
				(92 mm)	(37 mm)	(98 mm)	
E	250549910	Metal cross divider	-	11 1/4"	1 7/16"	7 3/4"	1
				(286 mm)	(37 mm)	(197 mm)	
F	250532031	Cross-cut multifunctional divider inserts	Birch	5 3/8"	1 1/2"	16 11/16"	98
	250532161		Walnut	(137 mm)	(38 mm)	(424 mm)	
G	250526031	Custom cut-out divider for utensils	Birch	11 3/4"	1 11/16"	16 3/4"	39
	250526161		Walnut	(299 mm)	(43 mm)	(426 mm)	
H	250531031	Multifunctional wood trays	Birch	11 13/16"	1 11/16"	4 3/16"	72
	250531161		Walnut			(106 mm)	
	250540031		Birch			8 5/16"	
	250540161		Walnut			(211 mm)	
I	250533031	Inclined split dividers for spices	Birch	5 3/8"	5 1/32"	16 11/16"	50
	250533161		Walnut	(137 mm)	(26 mm)	(424 mm)	
J	250534031	Knife block inserts	Birch	5 3/8"	5 1/32"	16 11/16"	64
	250534161		Walnut	(137 mm)	(26 mm)	(424 mm)	
K	250535031	Stainless steel foodwrap dispenser	Birch	5 3/8"	1 1/2"	16 11/16"	120
	250535161		Walnut	(137 mm)	(38 mm)	(424 mm)	
L	250536031	Spice container inserts	Birch	5 3/8"	15/32"	16 11/16"	210
	250536161		Walnut	(137 mm)	(12 mm)	(424 mm)	
M	250537170	Spice container set (set of 6 with lids)	Stainless Steel	2 3/8"	2"	2 3/8"	
				(60 mm)	(50 mm)	(60 mm)	
N	250539031	Multifunctional wood boxes with ideal-sized handle Dispensa cupboards	Birch	8 3/8"	4 5/16"	8 3/8"	60
	250539161		Walnut			(212 mm)	
	250538031		Birch			16 11/16"	30
	250538161		Walnut			(424 mm)	
O	250541031	Perforated custom cut panels	Birch	33 5/8"	3/8"	22"	1
	250541161		Walnut	(854 mm)			
	250542031		Birch	40"			16
	250542161		Walnut	(1016 mm)			
P	250544031	Pegs for perforated panels and wooden dividers (set of 4)	Birch	1"	6 5/16"	1"	300
	250544161		Walnut	(25 mm)	(160 mm)	(25 mm)	
Q	009197031	Plate holders	Birch	13 3/8"	7 1/2"	7 1/16"	50
	009197161		Walnut	(340 mm)	(191 mm)	(180 mm)	
R	250543990	Non-slip bumper (bag of 25) Holds the assembly firmly in place in the drawer	Black	-	-	-	25
-	250528031	Extensions to fills remaining space in drawer	Birch	47 1/4"	1 11/16"	4 1/8"	48
	250528161		Walnut	(1 200 mm)	(43 mm)	(105 mm)	
-	250529010	Aluminum connection clip to hold dividers together	Aluminium	1 9/16"	3/8"	9/16"	100
				(40 mm)	(10 mm)	(14 mm)	

1
SCREWS
AND
FASTENERS

2
FURNITURE
EQUIPMENT

3
HINGES

4
SLIDES

5
CASTERS
AND LEGS

6
KITCHEN
SOLUTIONS

7
CLOSET
SOLUTIONS

8
LIGHTING
SOLUTIONS

9
SINKS
AND
FAUCETS

10
OFFICE

11
SLIDING
DOORS

12
GLASS
HARDWARE

13
PANELS
AND
SURFACES

14
EDGE-
BANDING

15
CABINET
DOORS
AND
DRAWERS

16
CORBELS
AND FLOOR
REGISTERS

17
GLUES,
SILICONES,
CAULK AND
INSULATING

18
TOOLS
AND
SECURITY

19
FINISHING
PRODUCTS
AND SHOP
SUPPLIES

20
COMMERCIAL
DISPLAY
HARDWARE

21
MOLDING,
RAILING AND
BATHROOM
HARDWARE

NOTES