

- 1 SCREWS AND FASTENERS
- 2 FURNITURE EQUIPMENT
- 3 HINGES
- 4 SLIDES
- 5 CASTERS AND LEGS
- 6 KITCHEN SOLUTIONS
- 7 CLOSET SOLUTIONS
- 8 LIGHTING SOLUTIONS
- 9 SINKS AND FAUCETS
- 10 OFFICE
- 11 SLIDING DOORS
- 12 GLASS HARDWARE
- 13 PANELS AND SURFACES
- 14 EDGE-BANDING
- 15 CABINET DOORS AND DRAWERS
- 16 CORBELS AND FLOOR REGISTERS
- 17 GLUES, SILICONES, CAULK AND INSULATING
- 18 TOOLS AND SECURITY
- 19 FINISHING PRODUCTS AND SHOP SUPPLIES
- 20 COMMERCIAL DISPLAY HARDWARE
- 21 MOLDING, RAILING AND BATHROOM HARDWARE

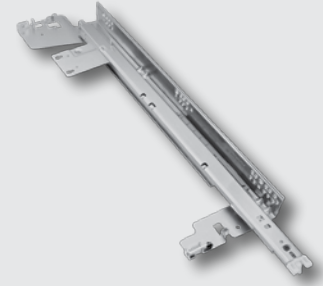
## 3160EC ECLIPSE EASY-CLOSE UNDERMOUNT SLIDES

Engineered specifically for commercial grade applications that require an undermount slide with flawless movement and superior soft-close action.

- Provides the flexibility to construct drawers up to 60" (1524 mm) wide
- Easy to install and adjust
- Bottom-mounted installation
- Full extension with soft-close mechanism
- Minimized drawer sagging and migration produces a consistent, reliable experience time after time

**Application:** Ideal for retail fixtures, hospitals, medical facilities, institutional casework or high-End residential.

*Accuride*



PRODUCT	LOAD CAPACITY	SLIDE LENGTH	QTY/BOX
T3160EC2G14	100 lb (45 kg)	14" (356 mm)	1 pair
T3160EC2G15		15" (381 mm)	
T3160EC2G16		16" (406 mm)	
T3160EC2G18		18" (457 mm)	
T3160EC2G20		20" (508 mm)	
T3160EC2G21		21" (533 mm)	
T3160EC2G22		22" (559 mm)	

## REAR MOUNT FACE FRAME BRACKET FOR 3135EC SLIDES

Bag of 2 brackets

PRODUCT	QTY/BOX
41800656	60

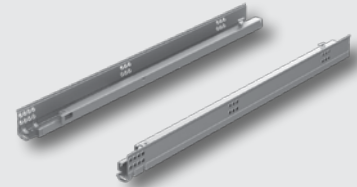
*Accuride*



## TANDEM EDGE 7/8 EXTENSION UNDERMOUNT SLIDE WITH BLUMOTION

- With BLUMOTION
- For 1/2" (13 mm) to 5/8" (16 mm) drawer thickness
- 7/8 extension
- Face frame or frameless cabinets
- Smooth running action
- Required locking devices enable easy drawer insertion and removal
- Dynamic load capacity: 75 lb (34 kg)
- Static load capacity 100 lb (45 kg)

*blum*



PRODUCT	LOAD CAPACITY	SLIDE LENGTH	QTY/BOX
554H2290B01	75 lb (34 kg)	9" (229 mm)	8
554H3050B01		12" (305 mm)	
554H3810B01		15" (381 mm)	
554H4570B01		18" (457 mm)	
554H5330B01		21" (533 mm)	

**Required product(s):**

PRODUCT	DESCRIPTION
T51170402	Locking device - Right
T51170403	Locking device - Left

**Suggested product(s):**

PRODUCT	DESCRIPTION
2953750	Rear mounting bracket TANDEM slides
2956510	Rear plug socket for face framing TANDEM drawer slide

## MOVENTO 769 CONCEALED UNDERMOUNT SLIDES - HEAVY-DUTY

Designed to be used with TIP-ON BLUMOTION touch-to-open system.

- Designed for frameless or blocked-out face frame cabinets
- 5/8" (16 mm) drawer thickness
- Four-dimensional adjustment
- Elongated holes for depth adjustment
- Bottom mount holes
- BLUMOTION soft-closing
- Smooth running action
- Load rating: 170 lb (77 kg) static



PRODUCT	SLIDE LENGTH	QTY/BOX
7694570M	18" (457 mm)	6 pairs
7695330M	21" (533 mm)	
7696100M	24" (610 mm)	
7696860M	27" (686 mm)	4 pairs
7697620M	30" (762 mm)	

### Important Information

To choose the right TIP-ON BLUMOTION unit, see chart for "TIP-ON BLUMOTION for movento"

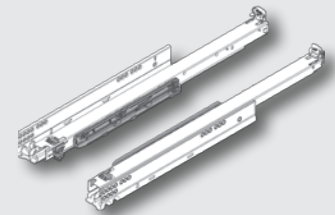
#### Required product(s):

PRODUCT	DESCRIPTION
T51760102	Movento Slide Bracket - Right
T51760103	Movento Slide Bracket - Left

## MOVENTO 763 CONCEALED UNDERMOUNT SLIDES

Designed to be used with TIP-ON BLUMOTION touch-to-open system.

- Designed for frameless or blocked-out face frame cabinets
- 5/8" (16 mm) drawer thickness
- Four-dimensional adjustment
- Elongated holes for depth adjustment
- Bottom mount holes
- BLUMOTION soft-closing
- Smooth running action
- Load rating: 125 lb (56.7 kg) static



PRODUCT	SLIDE LENGTH	QTY/BOX
7633050M	12" (305 mm)	6 pair
7633810M	15" (381 mm)	
7634570M	18" (457 mm)	
7635330M	21" (533 mm)	

#### Required product(s):

PRODUCT	DESCRIPTION
T51760102	Front locking device - Right
T51760103	Front locking device - Left

#### TIP-ON BLUMOTION for MOVENTO

Sets include:

- ▣ Left and right MOVENTO runners
- ▣ Left and right TIP-ON units and triggers

1 Left and right MOVENTO runners



2 Left and right TIP-ON unit and trigger



For overall cabinet depth	Drawer length	Dynamic load capacity		S1	L1	L3	L5
		110 lb	155 lb	0 - 44 lb	0 - 44 lb	44 - 88 lb	88 - 155 lb
686 (27")	610 (24")		7696100M				T60L7570
	610 (24")	7635330M	7695330M		T60L7340	T60L7540	T60L7570
	533 (21")	7634570M	7694570M		T60L7340	T60L7540	T60L7570
	457 (18")	7633810M			T60L7340	T60L7540	
	381 (15")	7633050M		T60L7140			

- 1 SCREWS AND FASTENERS
- 2 FURNITURE EQUIPMENT
- 3 HINGES
- 4 SLIDES
- 5 CASTERS AND LEGS
- 6 KITCHEN SOLUTIONS
- 7 CLOSET SOLUTIONS
- 8 LIGHTING SOLUTIONS
- 9 SINKS AND FAUCETS
- 10 OFFICE
- 11 SLIDING DOORS
- 12 GLASS HARDWARE
- 13 PANELS AND SURFACES
- 14 EDGE-BANDING
- 15 CABINET DOORS AND DRAWERS
- 16 CORBELS AND FLOOR REGISTERS
- 17 GLUES, SILICONES, CAULK AND INSULATING
- 18 TOOLS AND SECURITY
- 19 FINISHING PRODUCTS AND SHOP SUPPLIES
- 20 COMMERCIAL DISPLAY HARDWARE
- 21 MOLDING, RAILING AND BATHROOM HARDWARE

## MOVENTO WASTE/RECYCLE SETS

Designed to be used with SERVO-DRIVE or TIP-ON BLUMOTION.

- Pre-assembled bottom mount set
- MOVENTO heavy-duty full extension concealed runners with BLUMOTION
- For 12" (305 mm), 15" (381 mm), and 18" (457 mm) minimum opening widths
- For 1/2" (13 mm) drawer side thickness
- 3/4" (19 mm) over extension
- For face frame and frameless applications
- Tool-free side-to-side, height, and tilt adjustment
- Maximum 1/4" (6 mm) cabinet bottom recess
- Load rating: 135 lb (61.2 kg) static

**Included:** MOVENTO heavy-duty runner set with 8 pre-mounted #6 x 1" wood screws for installation, 2 standard locking device with 4 #6 x 5/8" wood screws for installation, installation template and instructions



PRODUCT	LENGTH	QTY/BOX
769R5337MB	12" (305 mm)	1
769R5337MD	15" (381 mm)	
769R5337MF	18" (457 mm)	

### Important Information

One set required per drawer

## MOVENTO 760H FULL EXTENSION CONCEALED SLIDE FOR SLIDING SHELF

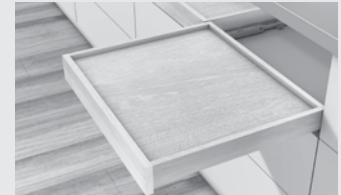
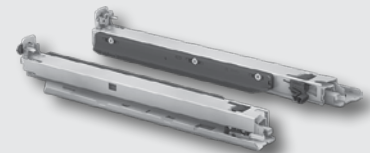
MOVENTO slide with BLUMOTION, for assembly to cabinet base panel/shelf.

- Concealed full extension with integrated BLUMOTION for silent and effortless closing action
- Synchronized feather-light glide
- For assembly to cabinet base panel/shelf
- BLUMATIC self-closing feature
- Tool-free side, height, and tilt adjustment
- Optional tool-free depth adjustment
- Built-in width depth tolerance compensation

PRODUCT	SLIDE LENGTH	QTY/BOX
760H5000BU	19 5/8" (500 mm)	4

Required product(s):

PRODUCT	DESCRIPTION
T51760102	Front locking device - Right
T51760103	Front locking device - Left
T51700001	MOVENTO/TANDEM fixing bracket for sliding shelf



## MOVENTO LOCKING DEVICE FOR NARROW DRAWER

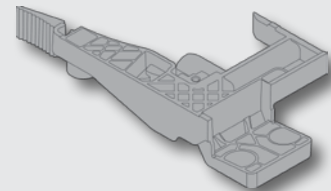
For use with narrow drawers.

- Captive right device and self-aligning left device
- Self-adjusting drawer length tolerance
- Vertical mount, two-piece nylon
- Minimum inside drawer width 3-3/4" (95 mm) without TIP-ON BLUMOTION
- Minimum sub-front thickness 5/8" (16 mm)
- Designed for 1/2" (13 mm) drawer bottom recess
- Maximum dynamic load capacity: 25 lb (11.3 kg)
- One right and one left is required per drawer

PRODUCT	POSITION	QTY/BOX
T5105012002	Right	100
T5105012003	Left	

### Important Information

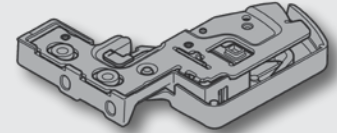
One right and one left is required per drawer



## MOVENTO VERTICAL MOUNTING LOCKING DEVICES

Vertical mount locking device used to minimize sub-front splitting

- Captive right device and self-aligning left device
- Self-adjusting drawer length tolerance
- Steel base with synthetic, spring-loaded release levers
- Minimum inside drawer width 6 11/16" (170 mm)
- Side-to-side adjustment +/- 1/16" (1.5 mm)
- Minimum sub-front thickness 5/8" (16 mm)
- Designed for 1/2" (13 mm) drawer bottom recess



PRODUCT	POSITION	QTY/BOX
T5176012002	Right	100
T5176012003	Left	

### Important Information

One right and one left is required per drawer

## LATERAL STABILIZER FOR MOVENTO 763/769

Synchronizes left and right runners to prevent drawer racking.

- Increases lateral stability
- Ideal for wide applications using MOVENTO
- Frameless and blocked-out face frame applications 12" to 24" (305 mm to 610 mm)
- Recommend for opening widths 24" (610 mm) and wider

**Included:** 2 pinion housings, 2 gear racks with locating tabs, 1 Linkage rod length 41 3/8" (1051 mm), 2 pinion adapters (qty 2), 2 locking clips, installation instructions



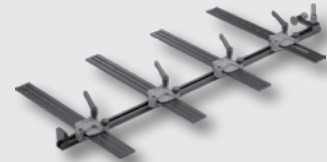
PRODUCT	QTY/BOX
ZS7M686MU	1

## CABINET PROFILE TEMPLATE SET

Uses to pre-bore holes for MOVENTO and TANDEM runners.

Also used for marking/pre-boring other Blum drawer systems, AVENTOS locating pins, and hinge mounting plates.

PRODUCT	QTY/BOX
65100001	1



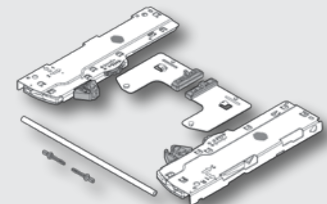
## TIP-ON BLUMOTION FOR MOVENTO WASTE/RECYCLE SET

- Heavy-duty L5 TIP-ON BLUMOTION units and triggers
- TIP-ON BLUMOTION synchronization rod, pre-cut per width
- TIP-ON BLUMOTION synchronization adapters (T60L7570B does not use TIP-ON BLUMOTION synchronization adapters)
- Instruction sheet

PRODUCT	QTY/BOX
T60L7570B	1
T60L7570D	
T60L7570F	

### Important Information

T60L7570B does not use TIP-ON BLUMOTION synchronization adapters

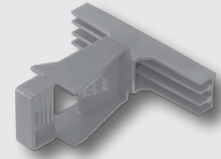


- 1 SCREWS AND FASTENERS
- 2 FURNITURE EQUIPMENT
- 3 HINGES
- 4 SLIDES
- 5 CASTERS AND LEGS
- 6 KITCHEN SOLUTIONS
- 7 CLOSET SOLUTIONS
- 8 LIGHTING SOLUTIONS
- 9 SINKS AND FAUCETS
- 10 OFFICE
- 11 SLIDING DOORS
- 12 GLASS HARDWARE
- 13 PANELS AND SURFACES
- 14 EDGE-BANDING
- 15 CABINET DOORS AND DRAWERS
- 16 CORBELS AND FLOOR REGISTERS
- 17 GLUES, SILICONES, CAULK AND INSULATING
- 18 TOOLS AND SECURITY
- 19 FINISHING PRODUCTS AND SHOP SUPPLIES
- 20 COMMERCIAL DISPLAY HARDWARE
- 21 MOLDING, RAILING AND BATHROOM HARDWARE

## TIP-ON BLUMOTION FOR MOVENTO FRONT GAP TEMPLATE

For creating a 1/8" (3.5 mm) front gap.

PRODUCT	QTY/BOX
655632US	1

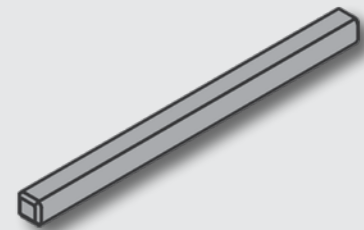


## TIP-ON BLUMOTION SYNCHRONIZATION ROD FOR NARROW APPLICATIONS

A synchronization rod is recommended for all cabinet widths for optimal function.

- Opening width: minimum = 11 11/16" (281 mm), maximum = 12" (305 mm)
- Length 2 1/2" (64 mm), cut to size

PRODUCT	QTY/BOX
T60300D22	80



## HEAVY-DUTY BALL BEARING DRAWERS SLIDES

A butterfly lever disconnect allows for easy drawer removal and a hold-in detent ensures effective closure without bounce back.

- Designed for wider and heavier drawers - up to 36" (914 mm) wide
- 1/2" (13 mm) side clearance
- Meets/exceeds performance standards as established by KCMA, BIFMA, and BHMA
- Limited lifetime warranty

**Application:** For residential and commercial furniture, commercial storage and retail store displays



PRODUCT	DESCRIPTION	LOAD RATING	SLIDE LENGTH	QTY/BOX
8600B2G12	8600 full extension drawer slides	150 lb (68 kg)	12" (305 mm)	5 pairs
8600B2G14			14" (356 mm)	
8600B2G16			16" (406 mm)	
8600B2G18			18" (457 mm)	
8600B2G20			20" (508 mm)	
8600B2G22			22" (559 mm)	
8600B2G24			24" (610 mm)	
8600B2G26			26" (660 mm)	
8600B2G28	28" (711 mm)			
8605B2G12	8605 over-travel drawer slides	140 lb (63.5 kg)	12" (305 mm)	
8605B2G14			14" (356 mm)	
8605B2G16			16" (406 mm)	
8605B2G18			18" (457 mm)	
8605B2G20			20" (508 mm)	
8605B2G22			22" (559 mm)	
8605B2G24			24" (610 mm)	
8605B2G26			26" (660 mm)	
8605B2G28	28" (711 mm)			



KNAPE & VOGT

## MEDIUM-DUTY BALL BEARING DRAWER SLIDES

Full extension drawer slide is a favorite of cabinet makers with cost sensitive projects who are looking for high-quality, consistent performance. With a 1/2" (13 mm) side profile, these slides easily adapt to standard drawer construction side clearances, resulting in minimal to no set-up changes.

GS4260 push-open drawer slides are ideal for drawer fronts where no knobs, handles or pulls are desired.

- Recommended maximum drawer width: 24" (609 mm)
- 1 1/4" (32 mm) hole pattern
- Meets/exceeds performance standards as established by KCMA, BIFMA, and BHMA
- Limited lifetime warranty
- Load rating : 100 lb (45 kg)

**Application:** For residential and commercial wood furniture, architectural, laboratory and school casework, store fixtures and displays and storage drawers

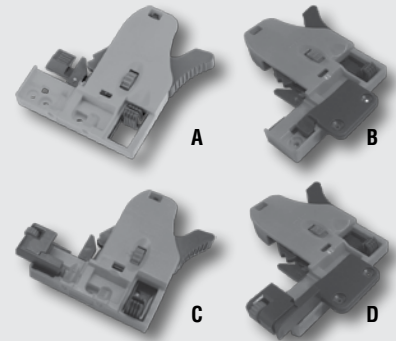
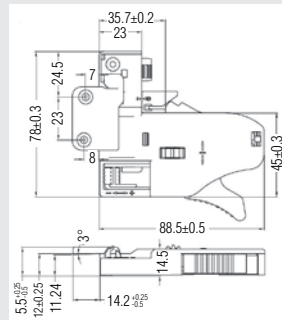


PRODUCT	DESCRIPTION	SLIDE LENGTH	QTY/BOX
GS4200EB14	GS4200 full extension drawer slides	14" (356 mm)	10 pairs
GS4200EB18		18" (457 mm)	
GS4200EB24		24" (610 mm)	
GS426010	GS4260 push-open, full extension drawer slides	10" (254 mm)	
GS426012		12" (305 mm)	
GS426014		14" (356 mm)	
GS426016		16" (406 mm)	
GS426018		18" (457 mm)	
GS426020		20" (508 mm)	
GS426022		22" (559 mm)	
GS426024		24" (610 mm)	
GS426026		26" (660 mm)	
GS426028		28" (711 mm)	

## LOCKING DEVICES WITH LIP AND ADJUSTMENTS

Locking devices with adjustments for Series 828 and 825.

REF.	PRODUCT	DESCRIPTION	MOUNTING	QTY/BOX
A	8284103	4 adjustments -	Left	60
	8284102	Frameless	Right	
B	8280303	4 adjustments -	Left	
	8280302	Face frame	Right	
C	8286103	6 adjustments -	Left	
	8286102	Frameless	Right	
D	8280403	6 adjustments -	Left	
	8280402	Face frame	Right	



## FUTURA SMOVE BOTTOM MOUNT CONCEALED SHELF SLIDE

Provides convenient and simple access to stored items that don't need a drawer.

- Easy to mount to fixed open shelves, fixed shelves behind doors or on the cabinet floor
- Smove soft-close system
- Safety system that prevents the shelves from turning over
- Shelf height adjustment +2.5 mm with clip 10710
- Shelf height adjustment +2.5 mm, side adjustment ±1.5 mm
- depth adjustment ±2 mm with clip 10750
- Load capacity: 100 lb (45 kg) static / 75 lb (34 kg) dynamic

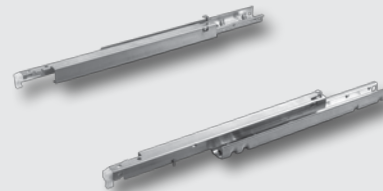
**Application:** Ideal for kitchens, shop display stands, living rooms, and office furniture.

PRODUCT	FINISH	SLIDE LENGTH	QTY/BOX
A6555935	Bright zinc-plated	14" (350 mm)	6
A6555940		16" (400 mm)	
A6555945		18" (450 mm)	
A6555950		20" (500 mm)	
A6555955		22" (550 mm)	
A6555960		24" (600 mm)	

**Required product(s):**

PRODUCT	DESCRIPTION
A7106100	Futura front clip for undermount slide
A750011	Locking device 6-way adjustable - right
A750013	Locking device 6-way adjustable - left

**SALICE**

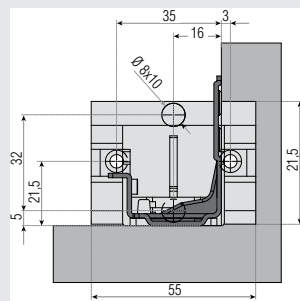


## REAR PLASTIC MOUNTING BRACKET FOR FUTURA SLIDES

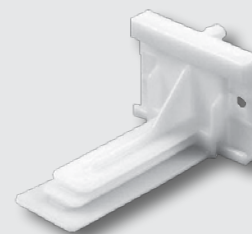
For Futura full extension slides.

- Lateral self-alignment feature
- Two synthetic pieces, natural colour
- Non-handed
- Non-detachable 5/16" (8 mm) dowels

PRODUCT	QTY/BOX
AS0755AJYD	100



**SALICE**



- 1 SCREWS AND FASTENERS
- 2 FURNITURE EQUIPMENT
- 3 HINGES
- 4 SLIDES
- 5 CASTERS AND LEGS
- 6 KITCHEN SOLUTIONS
- 7 CLOSET SOLUTIONS
- 8 LIGHTING SOLUTIONS
- 9 SINKS AND FAUCETS
- 10 OFFICE
- 11 SLIDING DOORS
- 12 GLASS HARDWARE
- 13 PANELS AND SURFACES
- 14 EDGE-BANDING
- 15 CABINET DOORS AND DRAWERS
- 16 CORBELS AND FLOOR REGISTERS
- 17 GLUES, SILICONES, CAULK AND INSULATING
- 18 TOOLS AND SECURITY
- 19 FINISHING PRODUCTS AND SHOP SUPPLIES
- 20 COMMERCIAL DISPLAY HARDWARE
- 21 MOLDING, RAILING AND BATHROOM HARDWARE

## STAINLESS STEEL DRAWER SLIDES

- Front disconnection by disconnection lever
- Low profile
- Bilateral installation - can be installed on both the right and left side
- 304 stainless steel - corrosion and oxidation resistant
- Positive stop - the drawer stops in the open position, but does not lock or snap

Sold by unit



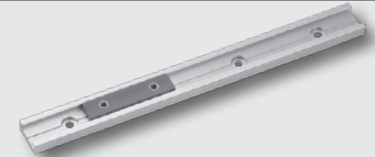
PRODUCT	DESCRIPTION	LENGTH	LOAD RATING	QTY/BOX
<b>2021170400</b>	Light-duty 3/4 extension drawer slide	15 3/4" (400 mm)	33 lb (15 kg)	100
<b>2031170400</b>	Light-duty full extension drawer slide		37 lb (16.7 kg)	48
<b>381317016</b>	Medium-duty full extension slide		79 lb (35.8 kg)	1 pair
<b>4513SC17016</b>	Medium-duty, soft-close full extension drawer slide		82 lb (37.2 kg)	
<b>750117016</b>	Medium-duty 3/4 extension drawer slide		94 lb (42.6 kg)	
<b>750617016</b>	Heavy-duty full extension drawer slide		126 (57.2 kg)	

## LINEAR SLIDES

Perfect for small stroke applications in electronic equipment or point of purchase displays.

No lubrication required.

Sold by unit



PRODUCT	FINISH	LENGTH	LOAD CAPACITY	QTY/BOX
<b>75200090</b>	Stainless Steel	15 3/4" (400 mm)	39.2 lb (17.7 kg)	50
<b>7520400180</b>				100
<b>7530400180</b>			21.6 lb (9.5 kg)	50



## SERIES 828 SYNCHRONIZED AND UNDERMOUNT SLIDES

Synchronized full extension soft-close concealed undermount slide.



PRODUCT	FINISH	LENGTH	LOAD CAPACITY	QTY/BOX
<b>New!</b> 828270	Zinc	10 5/8" (270 mm)	99.2 lb (45 kg)	10 pairs
828300		11 3/4" (300 mm)		
828350		13 3/4" (350 mm)		
828400		15 3/4" (400 mm)		
828450		17 3/4" (450 mm)		
828500		19 5/8" (500 mm)		
828550		21 5/8" (550 mm)		

Required product(s):

PRODUCT	DESCRIPTION
8284103	Locking device with 4 adjustments for Series 828 and 825 - Left
8284102	Locking device with 4 adjustments for Series 828 and 825 - Right
8286103	Locking device with 6 adjustments for Series 828 and 825 - Left
8286102	Locking device with 6 adjustments for Series 828 and 825 - Right

## FULL EXTENSION BALL BEARING DRAWER SLIDES

- Non-handed, slides can be used interchangeably either on the left or right side
- 304 stainless steel is corrosion and oxidation resistant, which makes it ideal for outdoor use
- Full extension provides free and easy access to the drawer



**Important:** Screws not included, load capacity is calculated for a pair of slides

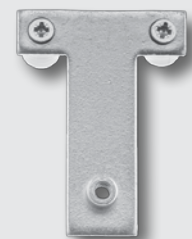
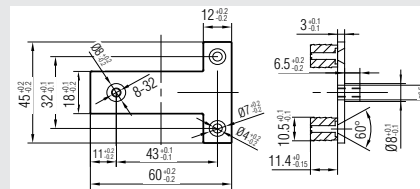
PRODUCT	FINISH	LENGTH	LOAD CAPACITY	QTY/BOX
4513DC17016	Stainless Steel	16" (406 mm)	103.6 lb (47 kg)	10 pairs
4513DC17018		18" (457 mm)	101.4 lb (46 kg)	
4513DC17020		20" (508 mm)	97 lb (44 kg)	
4513DC17022		22" (559 mm)	94.8 lb (43 kg)	

## T-DRAWER FRONT ADJUSTER

T-plate with pre-mounted 2 plastic dowels and 2 euro flat screws and a 8-32 riveted nut.

Sold by unit

PRODUCT	QTY/BOX
42196452G	200



- 1 SCREWS AND FASTENERS
- 2 FURNITURE EQUIPMENT
- 3 HINGES
- 4 SLIDES
- 5 CASTERS AND LEGS
- 6 KITCHEN SOLUTIONS
- 7 CLOSET SOLUTIONS
- 8 LIGHTING SOLUTIONS
- 9 SINKS AND FAUCETS
- 10 OFFICE
- 11 SLIDING DOORS
- 12 GLASS HARDWARE
- 13 PANELS AND SURFACES
- 14 EDGE-BANDING
- 15 CABINET DOORS AND DRAWERS
- 16 CORBELS AND FLOOR REGISTERS
- 17 GLUES, SILICONES, CAULK AND INSULATING
- 18 TOOLS AND SECURITY
- 19 FINISHING PRODUCTS AND SHOP SUPPLIES
- 20 COMMERCIAL DISPLAY HARDWARE
- 21 MOLDING, RAILING AND BATHROOM HARDWARE

### RECTANGULAR FRONT RAIL FOR 908 INNER DRAWER SYSTEM

Sold by unit

PRODUCT	FINISH	LENGTH	QTY/BOX
908RT1100106	Gray	43 5/16" (1100 mm)	50
908RT110030	White Finish		



### UPPER RECTANGULAR SIDE TUBE FOR 908 DRAWER SYSTEM

To be used for creating a 908 inner drawer.

Sold by unit

PRODUCT	FINISH	LENGTH	QTY/BOX
908T270106	Gray	10 5/8" (270 mm)	50
908T27030	White Finish		
908T300106	Gray	11 13/16" (300 mm)	50
908T30030	White Finish		
908T350106	Gray	13 3/4" (350 mm)	50
908T35030	White Finish		
908T400106	Gray	15 3/4" (400 mm)	50
908T40030	White Finish		
908T450106	Gray	17 3/4" (450 mm)	50
908T45030	White Finish		
908T500106	Gray	19 5/8" (500 mm)	50
908T50030	White Finish		
908T550106	Gray	21 5/8" (550 mm)	50
908T55030	White Finish		



### MID RECTANGULAR LATERAL TUBE FOR 908 DRAWER SYSTEM

To be used for creating a 908 inner drawer.

PRODUCT	FINISH	LENGTH	QTY/BOX
908M270106	Anthracite	10 5/8" (270 mm)	50
908M300106		11 3/4" (300 mm)	
908M350106		13 3/4" (350 mm)	
908M400106		15 3/4" (400 mm)	
908M450106		17 3/4" (450 mm)	
908M500106		19 5/8" (500 mm)	
908M550106		21 5/8" (550 mm)	
908M27030	White	10 5/8" (270 mm)	
908M30030		11 3/4" (300 mm)	
908M35030		13 3/4" (350 mm)	
908M40030		15 3/4" (400 mm)	
908M45030		17 3/4" (450 mm)	
908M50030		19 5/8" (500 mm)	
908M55030		21 5/8" (550 mm)	



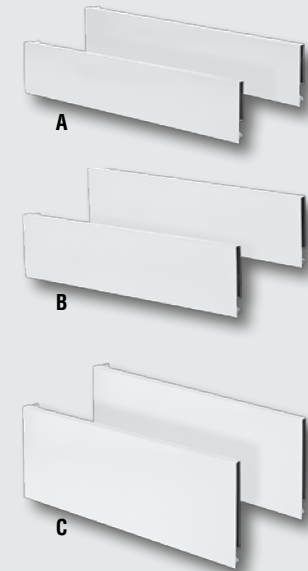
## RICHELIEU 808 DRAWER SIDES

**Included:**

- Double sided metal sides with pre-mounted rear brackets
- Plastic cover caps
- Doweled front brackets

Sold by pair

REF.	PRODUCT	FINISH	LENGTH	HEIGHT	QTY/BOX
A	8088927100	Gray	10 5/8" (270 mm)	3 1/2" (89 mm)	10
	808892730	White			
	8088930100	Gray	11 3/4" (300 mm)	3 1/2" (89 mm)	
	808893030	White			
	8088935100	Gray	13 3/4" (350 mm)	3 1/2" (89 mm)	
	808893530	White			
	8088940100	Gray	15 3/4" (400 mm)	3 1/2" (89 mm)	
	808894030	White			
	8088945100	Gray	17 3/4" (450 mm)	3 1/2" (89 mm)	
	808894530	White			
	8088950100	Gray	19 5/8" (500 mm)	3 1/2" (89 mm)	
	808895030	White			
8088955100	Gray	21 5/8" (550 mm)	3 1/2" (89 mm)		
808895530	White				
B	80812127100	Gray	10 5/8" (270 mm)	4 3/4" (121 mm)	10
	8081212730	White			
	80812130100	Gray	11 3/4" (300 mm)	4 3/4" (121 mm)	
	8081213030	White			
	80812135100	Gray	13 3/4" (350 mm)	4 3/4" (121 mm)	
	8081213530	White			
	80812140100	Gray	15 3/4" (400 mm)	4 3/4" (121 mm)	
	8081214030	White			
	80812145100	Gray	17 3/4" (450 mm)	4 3/4" (121 mm)	
	8081214530	White			
	80812150100	Gray	19 5/8" (500 mm)	4 3/4" (121 mm)	
	8081215030	White			
80812155100	Gray	21 5/8" (550 mm)	4 3/4" (121 mm)		
8081215530	White				
C	80818527100	Gray	10 5/8" (270 mm)	7 1/4" (185 mm)	5
	8081852730	White			
	80818530100	Gray	11 3/4" (300 mm)	7 1/4" (185 mm)	
	8081853030	White			
	80818535100	Gray	13 3/4" (350 mm)	7 1/4" (185 mm)	
	8081853530	White			
	80818540100	Gray	15 3/4" (400 mm)	7 1/4" (185 mm)	
	8081854030	White			
	80818545100	Gray	17 3/4" (450 mm)	7 1/4" (185 mm)	
	8081854530	White			
	80818550100	Gray	19 5/8" (500 mm)	7 1/4" (185 mm)	
	8081855030	White			
80818555100	Gray	21 5/8" (550 mm)	7 1/4" (185 mm)		
8081855530	White				



- 1** SCREWS AND FASTENERS
- 2** FURNITURE EQUIPMENT
- 3** HINGES
- 4** SLIDES
- 5** CASTERS AND LEGS
- 6** KITCHEN SOLUTIONS
- 7** CLOSET SOLUTIONS
- 8** LIGHTING SOLUTIONS
- 9** SINKS AND FAUCETS
- 10** OFFICE
- 11** SLIDING DOORS
- 12** GLASS HARDWARE
- 13** PANELS AND SURFACES
- 14** EDGE-BANDING
- 15** CABINET DOORS AND DRAWERS
- 16** CORBELS AND FLOOR REGISTERS
- 17** GLUES, SILICONES, CAULK AND INSULATING
- 18** TOOLS AND SECURITY
- 19** FINISHING PRODUCTS AND SHOP SUPPLIES
- 20** COMMERCIAL DISPLAY HARDWARE
- 21** MOLDING, RAILING AND BATHROOM HARDWARE

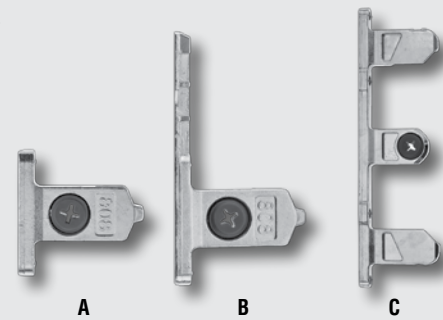
Richelieu  
Slides

### FRONT BRACKETS FOR STANDARD 808 SERIES DRAWER

808 drawers series come standard with doweled brackets. These screw-on bracket versions are also available.

Sold by unit

REF.	PRODUCT	MOUNTING	DRAWER HEIGHT	QTY/BOX
A	8088918912G	Screw-On	3 1/2" (89 mm)	600
B	80812112G		4 3/4" (121 mm)	400
C	80818512G		7 1/4" (185 mm)	200



### BOTTOM SUPPORT FOR 808 DRAWER BACK

PRODUCT	QTY/BOX
808DBHDJ	400



### BOTTOM FIXING FOR 808 DRAWER FRONT

PRODUCT	QTY/BOX
808JG160	400



### RECTANGULAR FRONT RAILS FOR 808 SERIES INNER DRAWER

PRODUCT	FINISH	LENGTH	QTY/BOX
808800100	Gray	800 mm	50
80880030	White		
8081200100	Gray	1200 mm	
808120030	White		

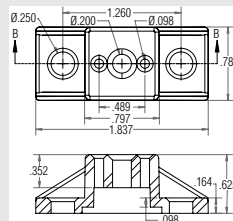


- 1 SCREWS AND FASTENERS
- 2 FURNITURE EQUIPMENT
- 3 HINGES
- 4 SLIDES
- 5 CASTERS AND LEGS
- 6 KITCHEN SOLUTIONS
- 7 CLOSET SOLUTIONS
- 8 LIGHTING SOLUTIONS
- 9 SINKS AND FAUCETS
- 10 OFFICE
- 11 SLIDING DOORS
- 12 GLASS HARDWARE
- 13 PANELS AND SURFACES
- 14 EDGE-BANDING
- 15 CABINET DOORS AND DRAWERS
- 16 CORBELS AND FLOOR REGISTERS
- 17 GLUES, SILICONES, CAULK AND INSULATING
- 18 TOOLS AND SECURITY
- 19 FINISHING PRODUCTS AND SHOP SUPPLIES
- 20 COMMERCIAL DISPLAY HARDWARE
- 21 MOLDING, RAILING AND BATHROOM HARDWARE

### DRAWER SLIDE SPACER - 5/8"

Spacer with holes that are 1 1/4" (32 mm) apart.

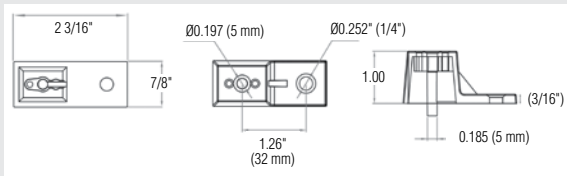
PRODUCT	FINISH	WIDTH	HEIGHT	DEPTH	QTY/BOX
362630	White	25/32" (20 mm)	1 7/8" (48 mm)	5/8" (16 mm)	1000



### DRAWER SLIDE SPACER - 1"

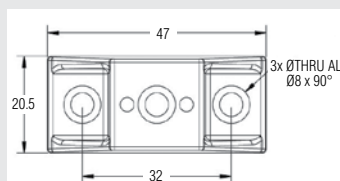
Spacer with 1/4" (6 mm) Hole & 3/16" (5 mm) Peg.

PRODUCT	FINISH	WIDTH	HEIGHT	DEPTH	QTY/BOX
362730	White	7/8" (22 mm)	2 3/16" (55 mm)	1" (25 mm)	1000



### LATERAL SPACER

PRODUCT	FINISH	WIDTH	HEIGHT	DEPTH	QTY/BOX
601916030	White	1 27/32" (47 mm)	5/8" (16 mm)	13/16" (21 mm)	1000
601963530			1/4" (6 mm)		



### ADJUSTABLE BRACKET FOR BALL BEARING SLIDES

Adjustable bracket with 10 mm dowels.

PRODUCT	POSITION	QTY/BOX
6270230	Right	50
6270330	Left	

