

THIN MAGNETIC CATCH

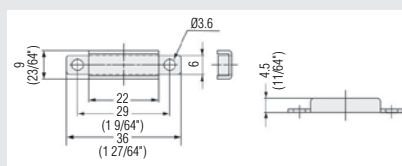
Thickness: only 4.5 mm

PRODUCT	FINISH	HOLDING POWER	QTY/BOX
75003180	Nickel	3.7 lb (1.7 kg)	500



Required product(s):

PRODUCT	DESCRIPTION
755049170	Plate for 755021xx



STAINLESS STEEL MAGNETIC CATCH

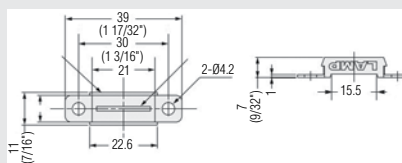
Thin magnetic catch ideal for tight spaces.

PRODUCT	FINISH	HOLDING POWER	QTY/BOX
75005170	Stainless Steel	6.6 lb (3 kg)	200



Required product(s):

PRODUCT	DESCRIPTION
755049170	Stainless steel plate for magnetic catches 75502130 and 75502190



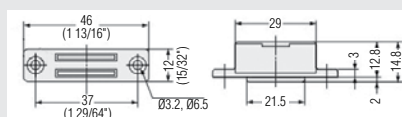
MAGNETIC CATCH - 0051

PRODUCT	FINISH	HOLDING POWER	QTY/BOX
75005190	Black	12 lb (5.5 kg)	50



Suggested product(s):

PRODUCT	DESCRIPTION
5526B2G	Plate for roller latch
55212G	Self-adhesive plate
50102G	Screw-in plate
55202G	Round plate
7822G	Striker plate

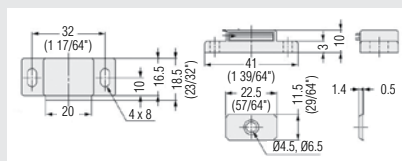


MAGNETIC CATCH - MC0097

PRODUCT	FINISH	HOLDING POWER	QTY/BOX
75009790	Black	3.3 lb (1.5 kg)	100
750097190	Black	7.7 lb (3.5 kg)	

Suggested product(s):

PRODUCT	DESCRIPTION
50102G	Screw-in plate



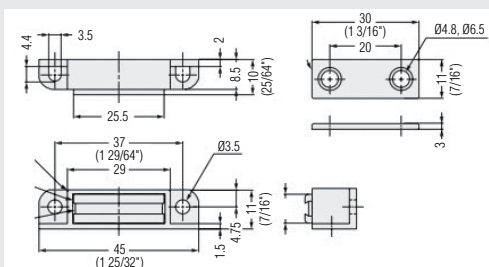
STRONG MAGNETIC CATCH

- Special design provides screw mounting options in 2 different planes
- Strong magnetic force in a small casing

PRODUCT	FINISH	HOLDING POWER	QTY/BOX
75011030	White	17.6 lb (8 kg)	100

Suggested product(s):

PRODUCT	DESCRIPTION
50102G	Screw-in plate



ULTRA THIN AND STRONG MAGNETIC CATCH

Unique ultra thin magnetic catch design with extra strong magnetic force.

- Suitable for high temperature environments up to 80°C (176°F)

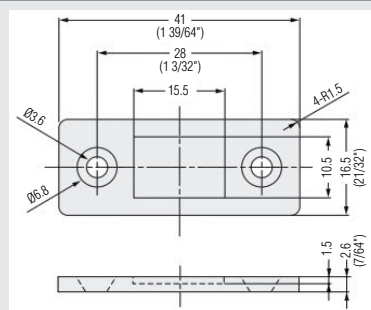
Important:

- To avoid breakage, counterplate should not hit magnet
- Screw heads should not protrude above the base plate
- Counterplate and fasteners not included. use M3 Flat head or equivalent

PRODUCT	FINISH	HOLDING POWER	QTY/BOX
750159180	Steel	8.8 lb (4 kg)	200

Suggested product(s):

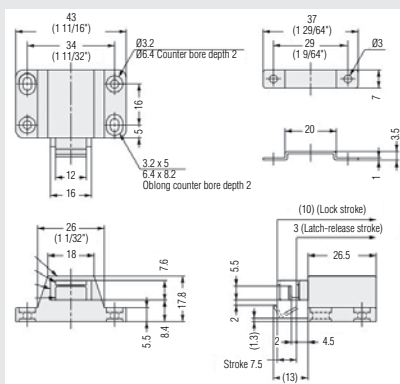
PRODUCT	DESCRIPTION
55162G	Rectangular plates
5516M41	
50102G	Screw-in plate
50132G	Strike Plate



NON-MAGNETIC TOUCH LATCH - PR21

- Strong retaining force
- Push to latch/unlatch

PRODUCT	FINISH	HOLDING POWER	QTY/BOX
7502190	Black	22 lb (10 kg)	100

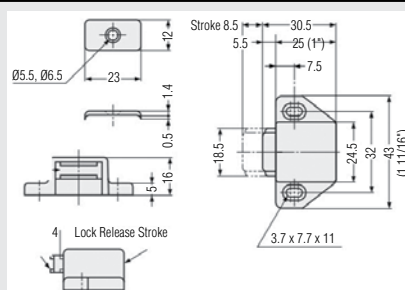


MAGNETIC TOUCH LATCH - 30S

Push to open/close door.

Note: for overlay door, allow a 4 mm (5/32") gap between door and cabinet frame for pushing room.

PRODUCT	FINISH	HOLDING POWER	QTY/BOX
7503030	White	2.6 lb (1.2 kg)	50



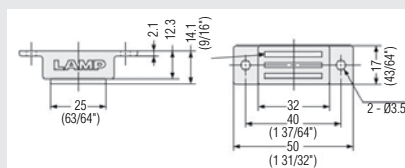
HIGH TEMPERATURE MAGNETIC CATCH

- Suitable for high temperature environments up to 250°C (482°F)
- Strong magnetic force

PRODUCT	FINISH	HOLDING POWER	QTY/BOX
7508370170	Stainless Steel	15.4 lb (7 kg)	40

Suggested product(s):

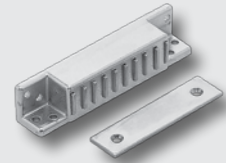
PRODUCT	DESCRIPTION
7550494170	Screw-in plate



HEAVY-DUTY MAGNETIC CATCHES

- Special design provides screw mounting options in 2 different planes
- Strong and heavy-duty magnetic catch

PRODUCT	FINISH	HOLDING POWER	WIDTH - OVERALL DIMENSIONS	HEIGHT	CENTER TO CENTER	QTY/BOX
753940180	Zinc	6.6 lb (3 kg)	40 mm	25/32" (20 mm)	15/32" (12 mm)	60
753950180		15.4 lb (7 kg)	50 mm		6/8" (18 mm)	50
753961180		24.2 lb (11 kg)	61 mm		1 1/16" (27 mm)	40
753980180		30.8 (14 kg)	80 mm	13/16" (21 mm)	1 9/16" (40 mm)	30
7539105180		33 lb (15 kg)	105 mm		2 3/16" (55 mm)	24

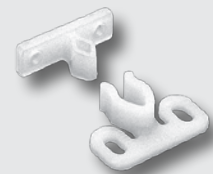
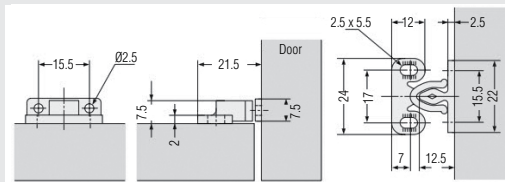


KNUCKLE CATCH

Knuckle catch with a simple mechanism for keeping furniture doors closed.

- Small, strong and durable plastic catch
- Grabs and holds doors tightly

PRODUCT	FINISH	HOLDING POWER	QTY/BOX
752430	White	5.9 lb (2.7 kg)	100

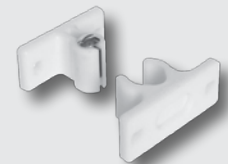
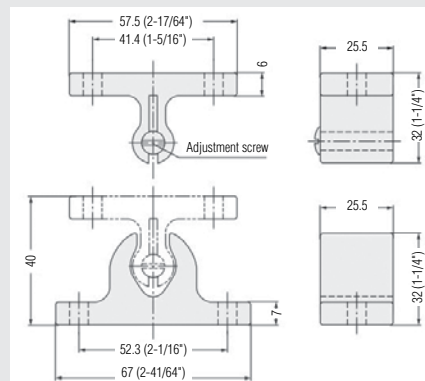


ADJUSTABLE KNUCKLE CATCHES

Grabs and holds doors tightly.

- Strong catch force
- Catch force is adjustable by turning adjustment screw
- Push in force: 28.7 to 57.3 lb (13 to 26 kg)
- Pulling force: 17.6 to 44.1 lb (8 to 20 kg)

PRODUCT	FINISH	QTY/BOX
75673290	Black	100
75673230	White	



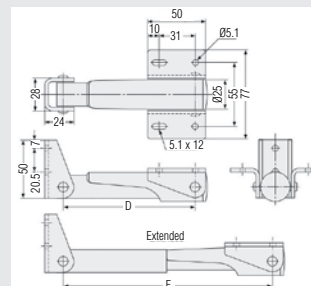
FOLDING ARM WITH LOCKING DEVICES

- Automatically locks when flap is in open position
- Press lever to release the lock
- For panel thickness 15~35 mm (19/32"~1-3/8")

Required Quantity:

- Width up to 23-5/8" (600 mm) 1 pc
- Width 23-5/8"~51-3/16" (600~1300 mm) 2 pcs

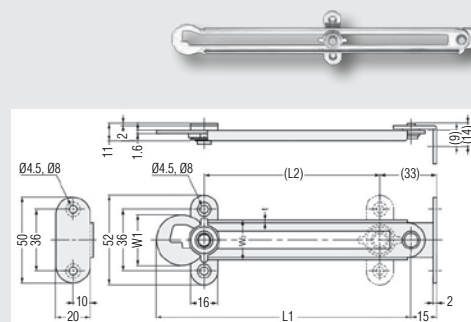
PRODUCT	FINISH	LOAD CAPACITY	QTY/BOX
753882010	Aluminum	77.2 lb (35 kg)	5
753883010		121.3 lb (55 kg)	
753884510		132.3 lb (60 kg)	
753886010		176.4 lb (80 kg)	



HEAVY-DUTY LID STAYS FOR TOY CHEST

- Lift up lid to release
- Can be installed individually or in pairs

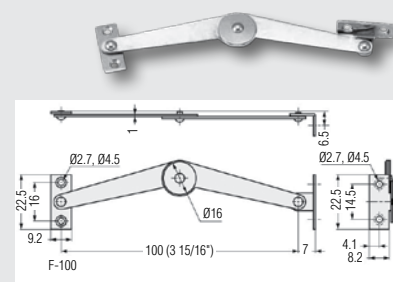
PRODUCT	FINISH	LOAD CAPACITY	LENGTH	POSITION	QTY/BOX
759303171	Stainless Steel	66.1 lb (30 kg)	63 5/8" (150 mm)	Left	60
759302171				Right	
759103171		88.2 lb (40 kg)	10 15/16" (277 mm)	Left	100
759102171				Right	



SUSPENSION ARMS - 751000

- Keeps lids from over extending
- Can be installed individually or in pairs
- Handed: specific left-hand and right-hand mounting

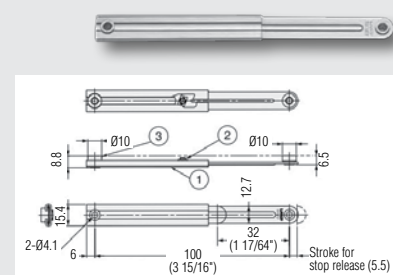
PRODUCT	FINISH	POSITION	QTY/BOX
7510003170	Stainless Steel	Left	50
7510002170		Right	



ULTRA MINI LID STAYS

- Holds lid or panel in open position
- Lift up lid to release
- Compact design
- Can be installed individually or in pairs
- Non-handed: can be installed on left or right side

PRODUCT	FINISH	LOAD CAPACITY	LENGTH	POSITION	QTY/BOX
7510006171	Stainless Steel	13.2 lb (6 kg)	3 15/16" (100 mm)	Left/Right	30
7514006171			5 1/2" (140 mm)		



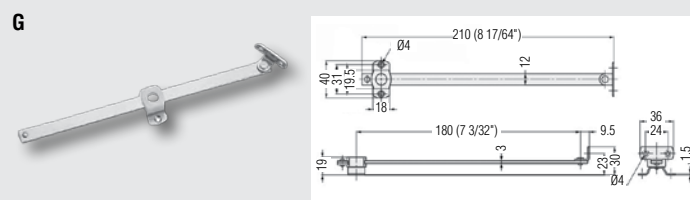
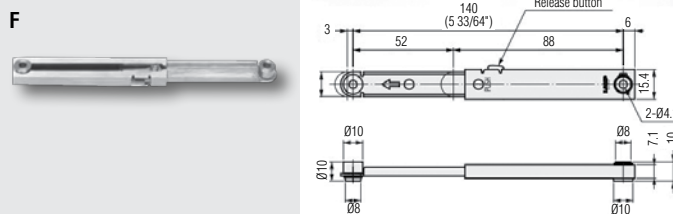
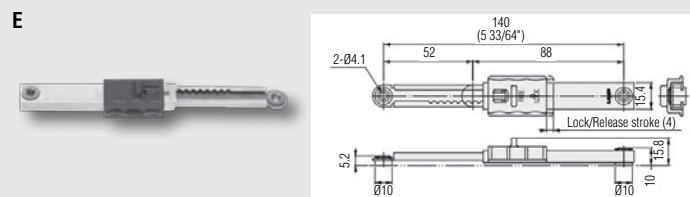
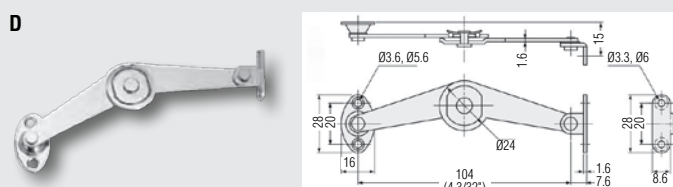
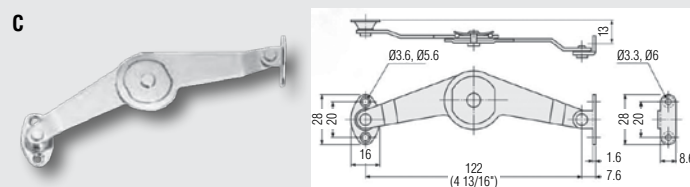
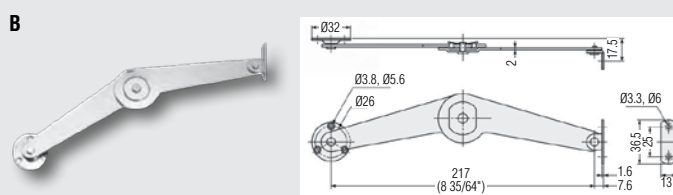
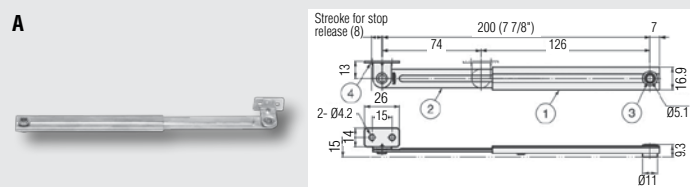
Required product(s):

PRODUCT	DESCRIPTION
LSBT	Mounting bracket

LID STAYS

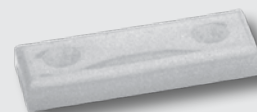
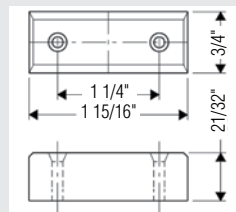
- Holds lid or panel in fully open position
- Can be installed individually or in pairs

REF.	PRODUCT	FINISH	DESCRIPTION	LENGTH	POSITION	QTY/BOX
A	75200171	Stainless Steel	Low profile lid stay, slightly lift up the lid to release stopper	7 7/8" (200 mm)	-	30
B	752003140		Lid stay with catch for toy chest, ideal for lightweight doors	8 9/16" (217 mm)	Left	40
	752002140				Right	
C	752103140		Short lid stay with catch for toy chest Ideal for lightweight doors	4 13/16" (122 mm)	Left	50
	752102140				Right	
D	752303140		Very short lid stay with catch for toy chest	4 1/16" (104 mm)	Left	50
	752302140				Right	
E	75614006171		Mini lid stay with lock Locks lid/panel in multiple positions by manually sliding lock lever	5 1/2" (140 mm)	Left/Right	1
F	75614015171		Mini lid stay with locking device, push button release, 80-degree opening	5 1/2" (140 mm)	-	20
G	75180171		For downward-opening flap doors	8 1/4" (210 mm)	Left/Right	20



BAR STRIKE

PRODUCT	THICKNESS	QTY/BOX
OL10057	5/8" (16 mm)	1

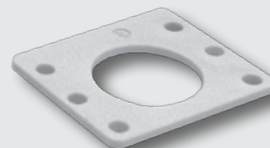
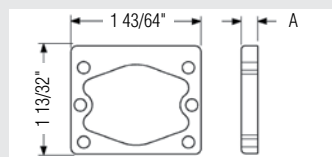


OLYMPUS SPACER FOR 7/8" CYLINDER DIAMETER LOCKS

Furniture pin lock spacer.

New!

PRODUCT	FINISH	THICKNESS (A)	QTY/BOX
OL10349	White	1/2" (13 mm)	1
OLWP23		1/2" (13 mm)	
OLWP21		3/32" (2 mm)	
OLWP22		1/4" (6 mm)	



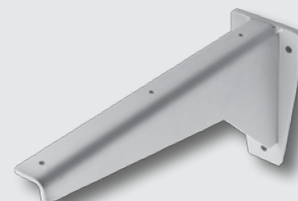
INDUSTRIAL HEAVY-DUTY BRACKETS

The industrial heavy-duty bracket is perfect for the workshop, home office, living room, kitchen, garage, or anywhere extra space is needed.

Sold by unit

New!

PRODUCT	FINISH	HEIGHT	WIDTH	PROJECTION	QTY/BOX
624038000	Steel	7 1/16" (180 mm)	3 1/8" (80 mm)	14 15/16" (380 mm)	10
624048000				18 7/8" (480 mm)	
624058000				22 13/16" (580 mm)	



ALUMINUM COUNTERTOP BRACKETS

- Provides reliable support and functionality
- Used to brace countertops, shelving, cabinetry applications and more
- Installation is a breeze with predrilled holes

Sold by unit

PRODUCT	FINISH	HEIGHT	PROJECTION	QTY/BOX
40121210	Mill Finish	12" (305 mm)	12" (305 mm)	10
40121230	White			
40121290	Black			
40181810	Mill Finish	18" (457 mm)	18" (457 mm)	
40181830	White			
40181890	Black			
40182410	Mill Finish		24" (610 mm)	
40182430	White			
40182490	Black			



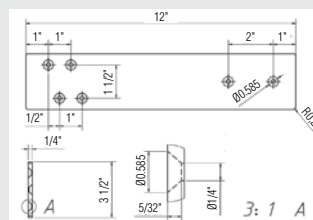
COUNTERTOP SUPPORT BRACKETS

- Nearly invisible, gives your countertop the appearance of floating
- Easy to install
- No special hardware or tools required
- Screw holes are countersunk into the brace for a flush installation

Application: For countertops, bars and extra bracing

Sold by unit

PRODUCT	FINISH	LENGTH	SHELF THICKNESS	QTY/BOX
62141290	Black	12" (305 mm)	1/4" (6 mm)	10
623161290			3/16 (5 mm)	
623161690		16" (406 mm)	3/8 (9 mm)	5
62381690			3/16 (5 mm)	10
623162490		24" (610 mm)	3/8 (9 mm)	5
62382490		30" (762 mm)		
62383090				



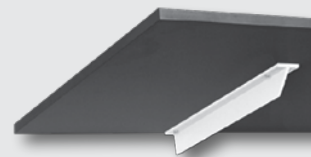
62141290



HEAVY-DUTY FLUSH MOUNT BRACKETS

These brackets use an L-shaped vertical leg flange that screws to the right side of the bare stud. After installation of the brackets, drywall is installed around the bracket to hide the vertical support. Only the shelf bracket is visible.

- Construction: TIG (tungsten inert gas) welded along both 45° mitered sides and across the back all sharp edges ground and deburred
- Hardware: 5/16" holes accept 1/4" screws
- Installation: 48" maximum spacing into studs or blocking or as specified by counter top supplier



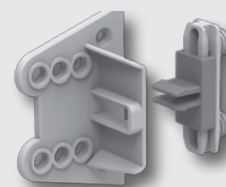
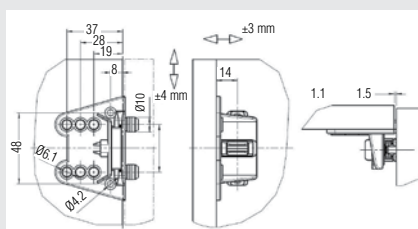
PRODUCT	FINISH	HEIGHT	PROJECTION	"T-BAR" DIMENSION	SHELF THICKNESS	QTY/BOX
EH1209	Mill Finish	9" (229 mm)	12" (305 mm)	2" x 2" (51 x 51 mm)	—	1
EH1209P	White Primer					
EH1209FM	Mill Finish	9" (229 mm)	12" (305 mm)	2" x 3" (51 x 76 mm)	—	1
EH1209FMP	White Primer					
EH1212FM	Mill Finish	12" (305 mm)	12" (305 mm)	2" x 2" (51 x 51 mm)	—	1
EH1212FPM	White Primer					
EH1818FM	Mill Finish	18" (457 mm)	18" (457 mm)	2" x 3" (51 x 76 mm)	1/4" (6 mm)	1
EH1818FMP	White Primer					
EH1824FM	Mill Finish	18" (457 mm)	24" (610 mm)	2" x 2" (51 x 51 mm)	3/16" (5 mm)	1
EH1824FMP	White Primer					

ADJUSTABLE FIXING BRACKET - PRE-MOUNTED

For lateral adjustment: ± 3 mm and
Height adjustment: ± 4 mm

- Made of sturdy plastic
- Designed for panel assembly

PRODUCT	FINISH	QTY/BOX
60609030	White	100

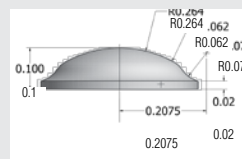


SELF-ADHESIVE ACRYLIC BUMPERS - 9.5 MM X 2.5 MM

Bumper especially designed for soft-close drawers and soft-close cabinet doors thanks to its shape (slightly curved) and its depth (2.5 mm // 7/64").

Also, after many years of use, the hardness of the bumper will help avoid:

- peeling
- yellowing
- turning soft and jelly



PRODUCT	FINISH	Ø	QTY/BOX
CP530911	Clear	3/8"	112
MP530911			1008
530911			3024

PVC TOE KICK

Richelieu's toe kick comes in three different sizes and are 13' 1/8" (4 m) in length. The back is manufactured in PVC making this toe kick highly durable. Each toe kick comes with a soft transparent sealing lip that creates a barrier to prevent dirt and moisture from infiltrating.

- For kitchen and bathroom installations
- Prevents the penetration of moisture and dust
- Can be cut to any length
- Easy installation
- Accessories pieces available
- Shipped with a protective film on the visible part

Sold by length of 13' 1/8" (4 m)



PRODUCT	FINISH	HEIGHT	LENGTH	QTY/BOX
7204100174	Polished Aluminum	3 15/16" (100 mm)	13' 1/8" (4 m)	15
7204100170	Stainless Steel			
7204120174	Polished Aluminum	4 3/4" (120 mm)		
7204120170	Stainless Steel			
7204150174	Polished Aluminum	5 15/16" (150 mm)		
7204150170	Stainless Steel			

STEALTHLOCK® CABINET ELECTRONIC LOCKING SYSTEM

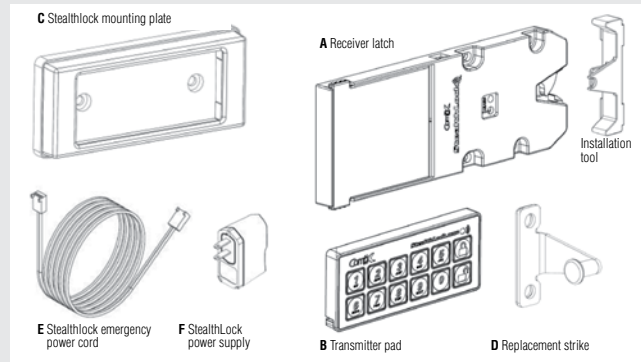
An innovative keyless cabinet lock operated by radio frequency technology.

- Transmitter pad operates within a 15 ft. range
- One transmitter pad can activate an unlimited number of receiver latches
- Separate user and supervisor codes (four to eight digits) to operate the lock(s)
- Receiver latch is easily programmed by user through the transmitter pad
- Receiver latch mounts within ½" drawer suspension clearance
- Uses readily available batteries: 4-AAA (not included) for the receiver latch and a CR2032 coin battery (included) for the transmitter pad
- Low battery indicator on transmitter pad
- For interior use only – recommended temperature range of 50°F to 120°F

Important Information:

- Batteries should be replaced on an annual basis to insure continued reliability

REF.	PRODUCT	DESCRIPTION	FINISH	QTY/BOX
-	LOCSL100	Stealthlock system kit	Black	1
A	LOCRL110	Stealthlock receiver latch kit	Black	1
B	LOCTP100	Stealthlock transmitter pad	Black	1
C	LOCMP300	Stealthlock mounting plate	Black	1
	LOCMP0700		Satin Nickel	1
D	LOCSP600	Stealthlock replacement strike	Black	1
E	LOCRLAPC9VJ10	Stealthlock emergency power cord	Black	1
F	LOCRLAP1	Stealthlock power supply	Black	1



STEALTHLOCK® CABINET ELECTRONIC LOCKING SYSTEM KIT

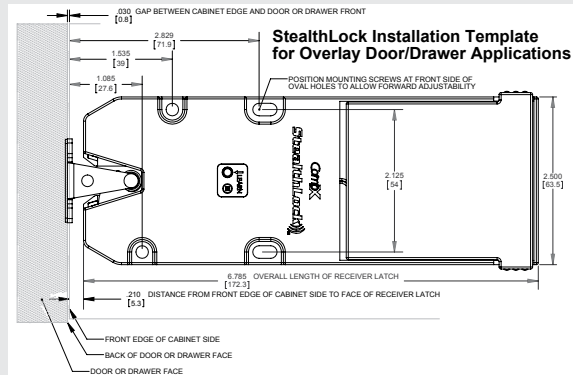
Contains all parts necessary to lock one door or drawer.

Applications: Lockers, closet cabinets and storage, kitchen cabinets, liquor cabinets, entertainment units, audio visual cabinets, office furniture, reception and conference furniture, healthcare cabinetry, retail display cabinets

Included:

- 1 receiver latch kit
- 1 transmitter pad
- 1 cabinet strike
- 1 installation tool

PRODUCT	QTY/BOX
LOCSL100	1



STEALTHLOCK® RECEIVER LATCH KIT

Replaces existing cabinet locks. Receiver latch kit needed to lock each additional door or drawer operated by existing transmitter pad.

Receiver kit needed to lock each additional door or drawer operated by existing transmitter pad.**

** For example: To lock a two-door system using one transmitter pad, one LOCSL100 and one LOCRL100 are needed

Included:

- 1 receiver latch
- 1 cabinet strike
- 1 installation tool

PRODUCT	WIDTH	HEIGHT	DEPTH	QTY/BOX
LOCRL110	6 13/16" (173 mm)	2 11/16" (68 mm)	7/16" (11 mm)	1



STEALTHLOCK® TRANSMITTER PAD

Radio frequency technology permits the transmitter pad to be stored anywhere, leaving no trace of visible hardware or signs of being secured.

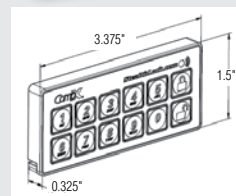
One transmitter pad can operate a single or multiple receiver latches.

- Transmitter pad operates within a 15 ft range
- Operates with separate and programmable user and supervisor codes
- User programmable with optional modes of operation for single use or self lock

PRODUCT	MATERIAL	WIDTH	HEIGHT	QTY/BOX
LOCTP100	Plastic	3 3/8" (86 mm)	1 1/2" (38 mm)	1

Suggested product(s):

PRODUCT	DESCRIPTION
LOCRL110	Stealthlock® receiver latch kit
LOCMP300	Stealthlock® mounting plate – black
LOCMO700	Stealthlock® mounting plate – satin nickel



STEALTHLOCK® MOUNTING PLATE

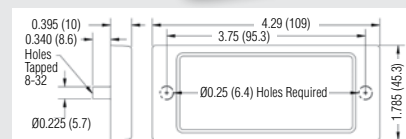
Optimal mounting plate for transmitter pad. 5/8" to 7/8" material thickness.

Mounting screws and template included.

PRODUCT	FINISH	WIDTH	HEIGHT	DEPTH	QTY/BOX
LOCMP300	Black	4 5/16" (109 mm)	1 13/16" (45 mm)	3/8" (10 mm)	1
LOCMO700	Satin Nickel				

Suggested product(s):

PRODUCT	DESCRIPTION
LOCSL100	Stealthlock® system kit



STEALTHLOCK® EMERGENCY POWER CORD

Provides emergency power to receiver latch using a 9 volt battery. Can power up to 10 receiver latches using the extension cords.

PRODUCT	LENGTH	QTY/BOX
LOCRLAPC9VJ10	10' (3.05 m)	1

Suggested product(s):

PRODUCT	DESCRIPTION
LOCSL100	Stealthlock® system kit



STEALTHLOCK® POWER SUPPLY

Connects receiver latch to 120 VAC power.

- One power supply can support/power 10 locks
- Includes 5-1/2 foot cord

PRODUCT	MATERIAL	VOLTAGE	QTY/BOX
LOCRLAP1	Plastic	7.5 V	1

Suggested product(s):

PRODUCT	DESCRIPTION
LOCSL100	Stealthlock® system kit



STEALTHLOCK® REPLACEMENT STRIKE PLATE

Replacement cabinet strike plate for the StealthLock System.

PRODUCT	MATERIAL	WIDTH	HEIGHT	DEPTH	QTY/BOX
LOCSP600	Plastic	3/8" (10 mm)	1 1/4" (32 mm)	1-3/16" (30 mm)	1

Suggested product(s):

PRODUCT	DESCRIPTION
LOC SL100	Stealthlock® system kit

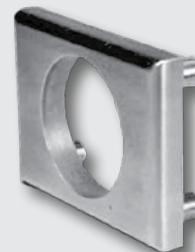
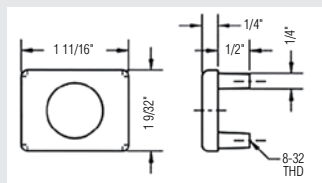


REINFORCING TRIM RING

1/4" (6 mm) thick exterior through-bolt plate.

- Attractive mounting: External metal throughbolt plate allows for flush mounting of the cabinet lock face with face of cabinet
- Increases security: Reinforces the cabinet face by direct connection of lock mounting screws to through-bolt plate's binder posts
- For large pin series locks 1/4" thick through-bolt plate

PRODUCT	QTY/BOX
OLETS25026D	1



ADJUSTABLE LEVELER SET

For small toe kicks.

The kit is composed of 4 legs:

- 2 front legs (black)
- 2 back legs (red)

The front legs regulation is made at the base of the leg with a standard screwdriver.

Due to the lack of height, the regulation of the back legs is made with specific screwdriver #4370180.

The adjustment is made by inserting the screwdriver from the front head. Slide it up to the back head then regulate the leg.

Use dedicated head #4370090 for the 4 legs.

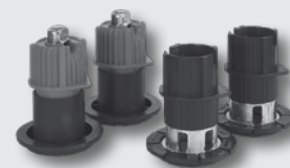
PRODUCT	FINISH	ADJUSTMENT	TOTAL HEIGHT	QTY/BOX
4370690	Black	+ 25 mm	60 mm	50
4370890		+ 20 mm, - 5 mm	80 mm	
4371090		+ 20 mm, - 5 mm	100 mm	

Required product(s):

PRODUCT	DESCRIPTION
4370090	Leveler Head with Dowels

Suggested product(s):

PRODUCT	DESCRIPTION
4370180	Allen Key Screwdriver 4 mm Red



ALLEN KEY SCREWDRIVER 4 MM RED

Long reach and greater torque.

Easier to use than standard Allen wrenches and make tightening hard to reach screws simple.

Sold by unit

PRODUCT	QTY/BOX
4370180	50



LIBERTA MODULAR SYSTEM

Liberta, as its name suggests, is the freedom to design highly versatile and modular systems based on easy-to-assemble connectors and profiles. You can quickly build customized, convertible structures and furniture for a variety of applications in the home or business.

- Easy and simultaneous adjustment
- Easy to mount and remove
- Highly stable structures
- Cut-to-size profiles
- No risk of altering robustness of profiles or deforming them



Versatile modular structures and configurations



LIBERTA 20 ALUMINUM PROFILE

Square profile measuring 20 x 20 x 3,000 mm

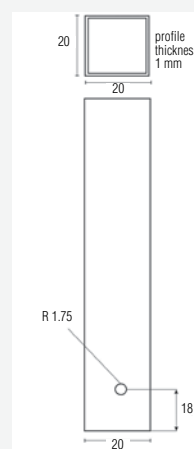
- Can be easily cut to size
- Cutting speed for a perfect cut: 2000 r/min
- Maximum distance between 2 connectors cannot exceed 80 cm (31-1/2")
- Weight capacity at 31-1/2" (80 cm) = 88 lb (40 kg)

Sold by length of 9'10" (3 m)

PRODUCT	FINISH	WIDTH	HEIGHT	LENGTH	QTY/BOX
6020030906	Black Anthracite	25/32" (20 mm)	25/32" (20 mm)	9' 10" (3 m)	1
602002010	Satin Aluminum				

Required product(s):

PRODUCT	DESCRIPTION
BSCM8S	8 1/2" (216 mm) Single bevel compound miter saw
FS561287	Kapex KS 120 sliding compound miter saw



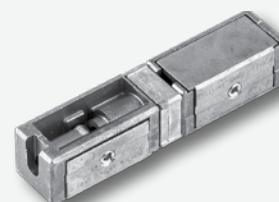
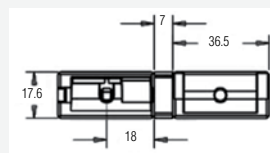
LIBERTA 20 2-WAY CONCEALED LINEAR CONNECTOR

Concealed connector to join 2 square profiles of 20 x 20 mm in a straight line. It's typically used to join profiles within a structure.

PRODUCT	QTY/BOX
60202312	100

Required product(s):

PRODUCT	DESCRIPTION
6020030906	Liberta 20 profile
60209252G	Allen key for Liberta



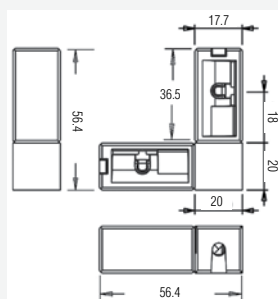
LIBERTA 20 2-WAY L-SHAPED CONNECTOR

Connector to join 2 square profiles of 20 x 20 mm in an L-shaped pattern. It's typically used to join 2 profiles in a corner.

PRODUCT	FINISH	DESCRIPTION	QTY/BOX
602022906	Black Anthracite	Visible	50
60202210	Satin Aluminum		
60202512	Zamak	Concealed	100

Required product(s):

PRODUCT	DESCRIPTION
6020030906	Liberta 20 profile
60209252G	Allen key for Liberta



Visible



Concealed

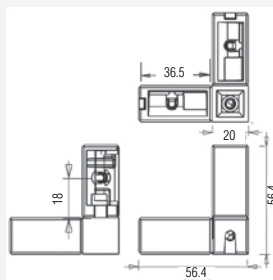
LIBERTA 20 3-WAY VISIBLE CONNECTOR

Visible connector to join 3 square profiles of 20 x 20 mm. This connector is typically used to create a cabinet corner.

PRODUCT	FINISH	QTY/BOX
602032906	Black Anthracite	40
60203210	Satin Aluminum	

Required product(s):

PRODUCT	DESCRIPTION
6020030906	Liberta 20 profile
60209252G	Allen key for Liberta



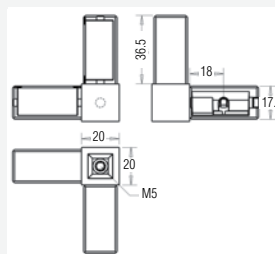
LIBERTA 20 3-WAY VISIBLE CONNECTOR WITH THREADED HOLE

Visible connector to join 3 square profiles of 20 x 20 mm, equipped with a threaded hole compatible with Liberta levelers. This connector is typically used to create a cabinet corner.

PRODUCT	FINISH	QTY/BOX
602034906	Black Anthracite	40
60203410	Satin Aluminum	

Required product(s):

PRODUCT	DESCRIPTION
602090590	Leveler for Liberta 20
6020030906	Liberta 20 profile
60209252G	Allen key for Liberta



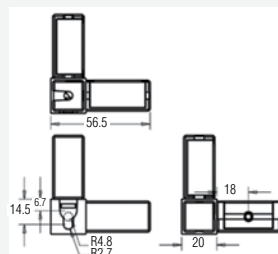
LIBERTA 20 3-WAY VISIBLE AND DIRECT WALL CONNECTORS

Visible and direct wall connector to join 3 square profiles of 20 x 20 mm. This connector is typically used to create a cabinet corner.

PRODUCT	FINISH	DESCRIPTION	QTY/BOX
6020312906	Black Anthracite	3-way wall mount connector for suspended cabinet - Right	40
602031210	Satin Aluminum	3-way wall mount connector for suspended cabinet - Right	
6020313906	Black Anthracite	3-way wall mount connector for suspended cabinet - Left	
602031310	Satin Aluminum	3-way wall mount connector for suspended cabinet - Left	

Required product(s):

PRODUCT	DESCRIPTION
6020030906	Liberta 20 profile
60209252G	Allen key for Liberta



LIBERTA MODULAR SYSTEM

LIBERTA 20 4-WAY CONNECTOR

PRODUCT	FINISH	M5 THREAD HOLE	STYLE	QTY/BOX
602042906	Black Anthracite	Without	Angular	30
60204210	Satin Aluminum			
602043906	Black Anthracite	Without	Linear	30
60204310	Satin Aluminum			
602044906*	Black Anthracite	With	Angular	30
60204410*	Satin Aluminum			

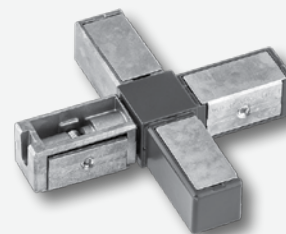
*Requires leveler

Required product(s):

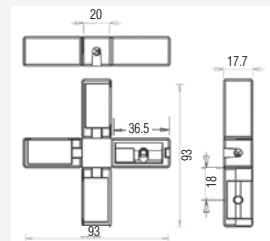
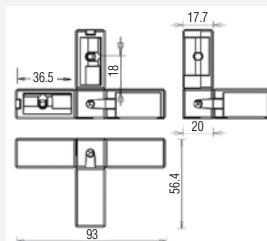
PRODUCT	DESCRIPTION
6020030906	Liberta 20 profile
60209252G	Allen key for Liberta
602090590	Leveler for Liberta 20



Angular



Linear



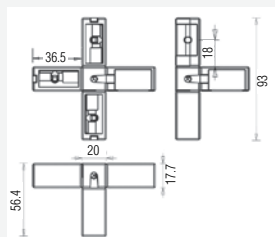
LIBERTA 20 5-WAY CONNECTOR

PRODUCT	FINISH	M5 THREAD HOLE	STYLE	QTY/BOX
602052906	Black Anthracite	Without	Angular	20
60205210	Satin Aluminum			
602054906*	Black Anthracite	With	Angular	20
60205410*	Satin Aluminum			

*Requires leveler

Required product(s):

PRODUCT	DESCRIPTION
6020030906	Liberta 20 profile
60209252G	Allen key for Liberta
602090590	Leveler for Liberta 20

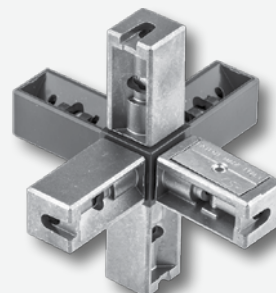
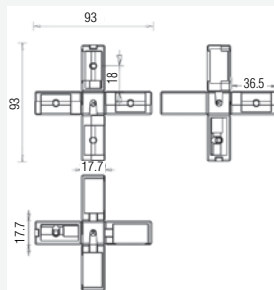


LIBERTA 20 6-WAY CONNECTOR

PRODUCT	FINISH	M5 THREAD HOLE	STYLE	QTY/BOX
602062906	Black Anthracite	Without	Angular	20
60206210	Satin Aluminum			

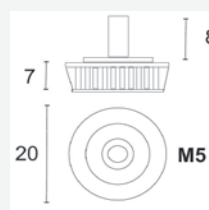
Required product(s):

PRODUCT	DESCRIPTION
6020030906	Liberta 20 profile
60209252G	Allen key for Liberta



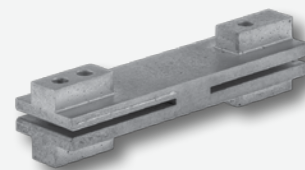
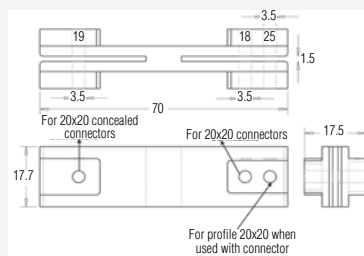
LEVELER FOR LIBERTA 20

PRODUCT	FINISH	THREAD	STEM LENGTH	TOTAL HEIGHT	QTY/BOX
602090590	Black	M5 (0.5 mm)	25/32" (20 mm)	1" (25 mm)	100



TEMPLATE JIG FOR LIBERTA 20

PRODUCT	WIDTH	HEIGHT	LENGTH	QTY/BOX
602092012	6/8" (18 mm)	6/8" (18 mm)	2 3/4" (70 mm)	1



ALLEN KEY FOR LIBERTA 20

PRODUCT	WIDTH	HEIGHT	LENGTH	QTY/BOX
60209252G	2.5 mm	55 mm	20 mm	1



LIBERTA 25 ALUMINUM PROFILE

Square profile - 25 x 25 x 3000 mm

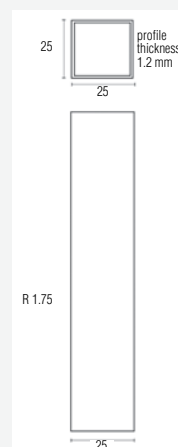
- Can be cut to size without problem
- Cutting speed in order to have a perfect cut: 2000 r/min
- Maximum distance between 2 connectors cannot exceed 63" (160 cm).
- Weight capacity at 63" (160 cm) = 132 lb (60 kg)

Sold by length of 9'10" (3 m)

PRODUCT	FINISH	WIDTH	HEIGHT	LENGTH	QTY/BOX
6025030906	Black Anthracite	1" (25 mm)	1" (25 mm)	9' 10" (3 m)	1
602502010	Satin Aluminum				

Required product(s):

PRODUCT	DESCRIPTION
BSCM8S	8-1/2" single bevel compound miter saw
FS561287	Kapex KS 120 sliding compound miter saw

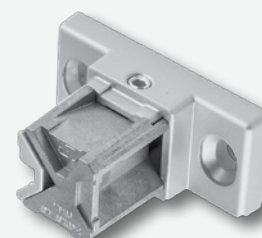
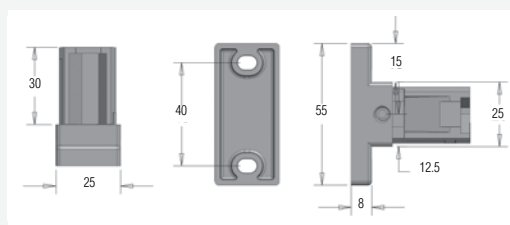


LIBERTA 25 1-WAY VISIBLE WALL CONNECTOR

PRODUCT	FINISH	QTY/BOX
602511906	Black Anthracite	50
60251110	Satin Aluminum	

Required product(s):

PRODUCT	DESCRIPTION
602593012	Allen key for Liberta



LIBERTA MODULAR SYSTEM

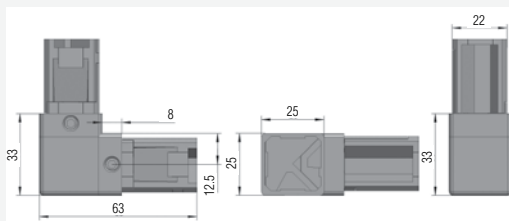
LIBERTA 25 2-WAY L-SHAPED VISIBLE CONNECTOR

Visible connector to join 2 square profiles of 25 x 25 mm in an L-shaped pattern.
This connector is typically used to join 2 profiles in a corner.

PRODUCT	FINISH	QTY/BOX
602522906	Black Anthracite	40
60252210	Satin Aluminum	

Required product(s):

PRODUCT	DESCRIPTION
6025030906	Liberta 25 profile
602593012	Allen key for Liberta



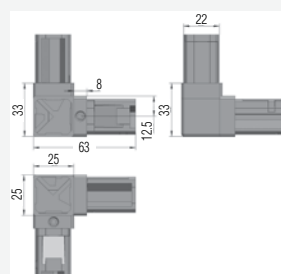
LIBERTA 25 3-WAY VISIBLE CONNECTOR

Visible connector to join 3 square profiles of 25 x 25 mm.
This connector is typically used to create a cabinet corner.

PRODUCT	FINISH	QTY/BOX
602532906	Black Anthracite	24
60253210	Satin Aluminum	

Required product(s):

PRODUCT	DESCRIPTION
6025030906	Liberta 25 profile
602593012	Allen key for Liberta



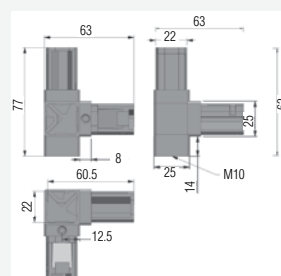
LIBERTA 25 3-WAY VISIBLE CONNECTOR WITH THREADED HOLE

Visible connector to join 3 square profiles of 25 x 25 mm, equipped with a threaded hole compatible with Liberta levelers. This connector is typically used to create a cabinet corner in a bottom cabinet.

PRODUCT	FINISH	QTY/BOX
602534906	Black Anthracite	30
60253410	Satin Aluminum	

Required product(s):

PRODUCT	DESCRIPTION
6025030906	Liberta 25 profile
602593012	Allen key for Liberta
602591090	Leveler for Liberta - Black finish
6025910140	Leveler for Liberta - Chrome finish



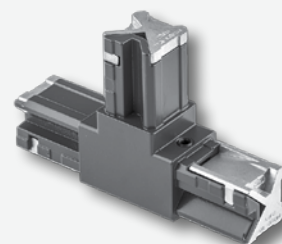
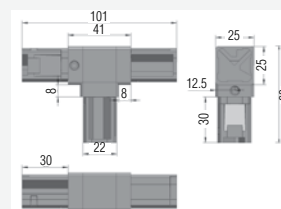
LIBERTA 25 3-WAY VISIBLE T-SHAPED CONNECTOR

Visible connector to join 3 square profiles measuring 25 x 25 mm in a T-shaped pattern.
This connector is used to connect two frames.

PRODUCT	FINISH	QTY/BOX
602533906	Black Anthracite	30
60253310	Satin Aluminum	

Required product(s):

PRODUCT	DESCRIPTION
6025030906	Liberta 25 profile
602593012	Allen key for Liberta



LIBERTA 25 4-WAY VISIBLE CONNECTOR

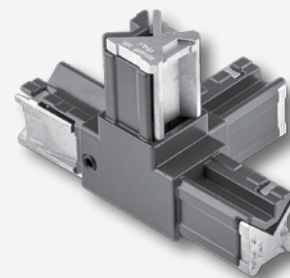
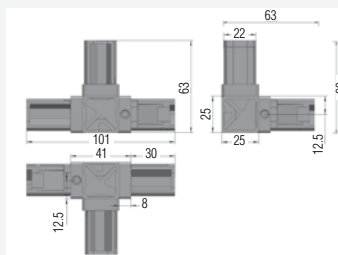
Visible connector to join 4 square profiles of 25 x 25 mm.

This connector is typically used to join 2 cubic structures at the top and side ends of a cabinet.

PRODUCT	FINISH	QTY/BOX
602542906	Black Anthracite	20
60254210	Satin Aluminum	

Required product(s):

PRODUCT	DESCRIPTION
6025030906	Liberta 25 profile
602593012	Allen key for Liberta



LIBERTA 25 4-WAY VISIBLE CONNECTOR WITH THREADED HOLE

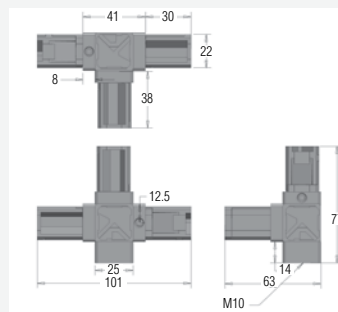
Visible connector to join 4 square profiles of 25 x 25 mm, equipped with a threaded hole compatible with Liberta

levelers. This connector is typically used to join two cubic structures in the middle of a bottom cabinet.

PRODUCT	FINISH	QTY/BOX
602545906	Black Anthracite	20
60254510	Satin Aluminum	

Required product(s):

PRODUCT	DESCRIPTION
6025030906	Liberta 25 profile
602593012	Allen key for Liberta
602591090	Leveler for Liberta - Black finish
6025910140	Leveler for Liberta - Chrome finish



LIBERTA 25 4-WAY VISIBLE X-SHAPED CONNECTOR

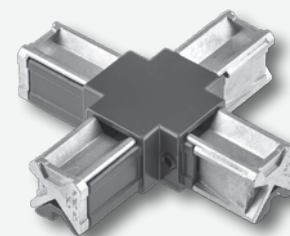
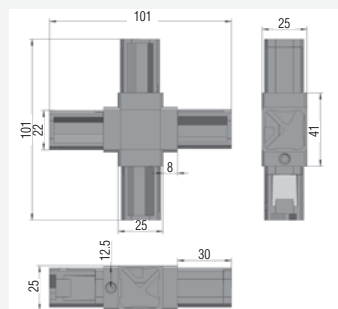
Visible connector to join 4 square profiles of 25 x 25 mm in an X-shaped pattern.

This connector is typically used to join 4 frames.

PRODUCT	FINISH	QTY/BOX
602543906	Black Anthracite	24
60254310	Satin Aluminum	

Required product(s):

PRODUCT	DESCRIPTION
6025030906	Liberta 25 profile
602593012	Allen key for Liberta



LIBERTA 25 5-WAY VISIBLE CONNECTOR

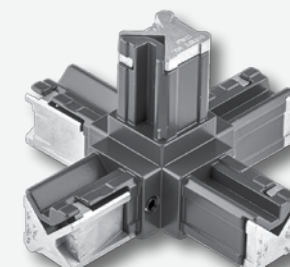
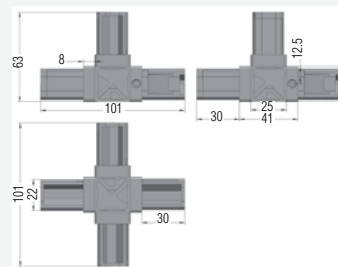
Visible connector to join 5 square profiles of 25 x 25 mm.

This connector is typically used to join 4 cubic structures.

PRODUCT	FINISH	QTY/BOX
602552906	Black Anthracite	20
60255210	Satin Aluminum	

Required product(s):

PRODUCT	DESCRIPTION
602502010	Liberta 25 profile
602593012	Allen key for Liberta



PINS FOR GLASS & WOOD SHELF

For lateral adjustment: +/- 3 mm and Height adjustment: +/- 4 mm

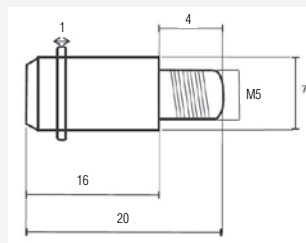
- Made of sturdy plastic
- Designed for panel assembly

Sold by unit

PRODUCT	FINISH	DESCRIPTION	QTY/BOX
60109012G	Black, Zinc	For Glass Shelf	100
60109022G	Zinc	For Wood Shelf	1000

Required product(s):

PRODUCT	DESCRIPTION
601090312	M5 rivet for liberta shelf pin support



M5 RIVET FOR LIBERTA PIN SUPPORT

For Liberta 20 and Liberta 25 -

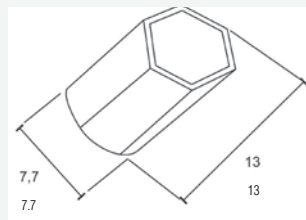
Add an intermediary shelf (glass or wood) by installing rivets on the aluminum profile.

Sold by unit

PRODUCT	FINISH	QTY/BOX
601090312	Zinc	1000

Required product(s):

PRODUCT	DESCRIPTION
60109012G	Pins for Glass Shelf
60109022G	Pins for Wood Shelf
700017	Riveting Tool
601090412	Bit for Rivet M5



BIT FOR RIVET M5

Sold by unit

PRODUCT	FINISH	WIDTH	LENGHT	QTY/BOX
601090412	Zinc	7.5 mm	120 mm	500

Required product(s):

PRODUCT	DESCRIPTION
601090312	M5 rivet for liberta shelf pin support



NOTES