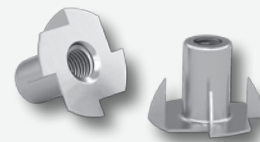


## 4-PRONG T-NUTS

T-Nuts are used in wood to wood and metal to wood applications.



PRODUCT	BOLT Ø	THREAD COUNT	FINISH	QTY/BOX
TNZ1024VP	#10	24	Zinc	25
TNZ1024				3800
TNZ1032VP		32		25
TNZ1032				3800
26112	M10-1.50	1.50	Zinc	25
70212	5/16	18	Zinc	25
TNZ51618MR				25
TNZ51618VP				25
CP70212				100
TNZ51618M1				1000
MP70212				1000
TNZ51618				2400
72212				25
TNZ3816MR	3/8	16	Zinc	25
TNZ3816VP				25
TNZ3816M1				1000
TNZ3816				1500
TNZ1420MR	1/4	20	Zinc	25
TNZ1420VP				25
CP72112				100
TNZ1420M1				1000
MP72112				4000
TNZ1420				25
72112				25
TNZ1024MR				#10
TNZ1032M1	32	1000		
9142G	M12	1.75	Zinc	25
<b>New!</b> 9082G	M8-1.25	16	Zinc	25

## SELF DRILLING CABINET INSTALLATION SCREWS, TYPE 17 POINT

The type 17 point eliminates predrilling and prevents the wood from cracking and splitting.

- Drive type: Square
- Screw head size: No. 8
- Head type: Pan washer
- Thread type: Coarse



NO. 8			
PRODUCT	LENGHT	FINISH	QTY/BOX
<b>New!</b> PWKC17M8118PRM1	1 1/8" (29 mm)	Maple Painted Head	1000
PWKC17M8118PR			6000
<b>New!</b> PWKC17W8118PRM1		White Painted Head	1000
PWKC17W8118PR			6000
PWKC17Z82PR	2" (51 mm)	Zinc	3000
<b>New!</b> PWKC17M8212PRM1	2 1/2" (64 mm)	Maple Painted Head	1000
PWKC17M8212PR			2000
<b>New!</b> PWKC17W8212PRM1		White Painted Head	1000
PWKC17W8212PR			2000
PWKC17Z8212PR		Zinc	2000
<b>New!</b> PWKC17M83PRC5		3" (76 mm)	Maple Painted Head
PWKC17M83PR	1500		
<b>New!</b> PWKC17W83PRC5	White Painted Head		500
PWKC17W83PR			1500

NO. 10			
PRODUCT	LENGHT	FINISH	QTY/BOX
PWKC17Z103	3" (76 mm)	Zinc	1500

### FLAT HEAD ASSEMBLY SCREWS, TYPE S POINT

- Drive type: Quadrex
- Screw head size: No. 8
- Head type: Flat
- Thread type: Hi-Low



NO. 8			
PRODUCT	LENGHT	FINISH	QTY/BOX
FLQBLKS850M1	1 31/32" (50 mm)	Black Zinc	1000
FLQBLKS850			3000

### POST MOUNTING ANCHOR

Solid and robust, this product is designed to anchor posts on terraces, porches and verandas.

- Provides five anchor points - the longer center screw allows to secure the post to the surface of the terrace
- Additionally secured with 4 construction screws
- The 3 1/2" (89 mm) square base plate is perfect for common post sizes
- The plate is flush with the post making it perfect for slipping PVC sleeving straight over the post
- The base plate can be routed into the base of larger posts thereby completely hiding the base plate permitting indoors use
- Epoxy coated and acrylic finish for maximum protection



Sold by unit

PRODUCT	FINISH	QTY/BOX
423517800	Black	10

### VELCRO® ONE WRAP® SELF-GRIPPING TAPE

Back-to-back fastener laminated without glue - no chemical residue. Designed for durability - ONE-WRAP® fasteners can be used over and over again.

- Base Materials: Polyethylene hook and nylon loop
- Average Shear: 23 PSI
- Average Peel: 0.5 PIW
- Rated Load: 18 lb
- Operating Temperature Range: 0-220° F

Sold by roll of 75 linear foot



PRODUCT	WIDTH	FINISH	QTY/BOX
V189755	1/2" (13 mm)	Black	20

### VELCRO® COINS FASTENERS WITH PEEL AND STICK ADHESIVE

Suitable for a wide range of applications thanks to the versatility and durability of synthetic nylon yarns.

- Adhesive type: Rubber based
- Average peel: 1.2 PIW
- Average shear: 14.0 PSI
- Operating temperature range: -70°F to 200°F (-56.7°C to 93.3°C)
- 1028 velcro coins per roll

Note: Hook and loop sold separately

Sold by roll

PRODUCT	TYPE	WIDTH	QTY/BOX
V151678	Hook	3/4" (19 mm)	20 rolls
V151679	Loop		

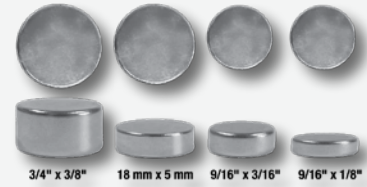


## NEODYMIUM DISC MAGNETS

High-performance N38 neodymium magnets. Ideal for door catches.

Sold by box

PRODUCT	Ø	THICKNESS	HOLDING POWER	QTY/BOX
423438	3/4"	3/8" (10 mm)	19 lb (8.6 kg)	12
421805	18 mm	5 mm (3/16")	11 lb (5 kg)	
42916316	9/16"	3/16" (5 mm)	6 lb (2.7 kg)	27
4291618		1/8" (3 mm)	4.5 lb (1.8 kg)	45



3/4" x 3/8"    18 mm x 5 mm    9/16" x 3/16"    9/16" x 1/8"



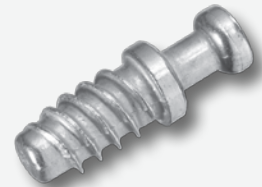
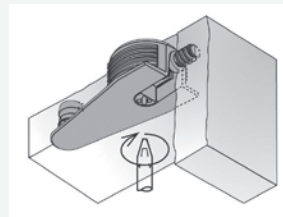
## SCREW-IN DOWELS

Screw-in dowel featuring an integral skirt which acts as a positive stop during insertion. KliX locking feature creates a strong, vibration-proof connection.

**Application:** For panel-to-panel, and back-to-back applications.

Sold by minimum of 100 units

PRODUCT	DRILLING LENGTH FOR DOWEL THREAD	MATERIAL	QTY/BOX
640283	5/16" (8 mm)	Steel	5000
6402		Zinc	
6401	11/32" (9 mm)	Steel	4500
<b>New!</b> 640683	7/16" (11.5 mm)		
6406			5000

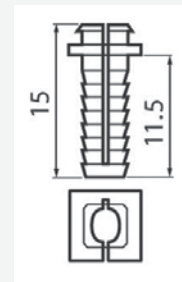


**Titus**

## EXPANDO SPLIT DOWELS

For Blum expando cam mounting plates.

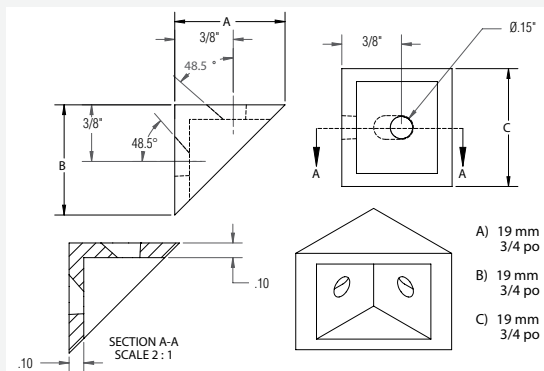
PRODUCT	BORING Ø	LENGTH	QTY/BOX
174H710E8	5 mm	19/32" (15 mm)	100
<b>New!</b> CP174H710E8			100



## PLASTIC CORNERS

Plastic corner for furniture assembly.

PRODUCT	FINISH	QTY/BOX
MP903490	Black	1000
MP903430	White	1000



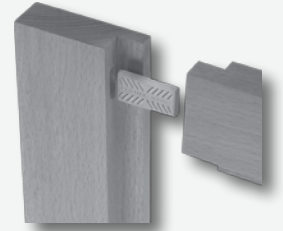
## BEECH DOMINO TENONS

Festool Beech Tenons are made from all-natural, solid beech hardwood for strength and stability.

- The flat, elongated design will not rotate, ensuring perfect alignment for both edge and face gluing
- Suitable for both plywood and solid wood applications, the dense beech tenon will not expand or telegraph through material, leaving a clean, flat, and consistent surfaces

**Application:** The beech tenon serves as a true floating tenon in mortise and tenon applications such as furniture, cabinetmaking, casing and frame work.

**FESTOOL**



PRODUCT	THICKNESS	LENGTH - OVERALL DIMENSIONS	WIDTH - OVERALL DIMENSIONS	FOR TOOL	QTY/BOX
FS495661	5/32" (4 mm)	25/32" (20 mm)	11/16" (17 mm)	Domino DF500	450
FS493296	3/16" (5 mm)	1 3/16" (30 mm)	3/4" (19 mm)	Domino DF500	1800
FS494938					300
FS494939	1/4" (6 mm)	1 9/16" (40 mm)	25/32" (20 mm)	Domino DF500	190
FS493297					1140
FS494940	5/16" (8 mm)	1 9/16" (40 mm)	7/8" (22 mm)	Domino DF500, DominoXL DF700	130
FS493298					780
FS494941		1 31/32" (50 mm)	7/8" (22 mm)	Domino DF500, DominoXL DF700	100
FS493299					600
<b>New!</b> FS498212					3 1/8" (80 mm)
FS498213	3 15/16" (100 mm)	7/8" (22 mm)	DominoXL DF700	150	
FS493300	3/8" (10 mm)	1 31/32" (50 mm)	15/16" (24 mm)	DominoXL DF700, Domino DF500	510
FS494942					85
<b>New!</b> FS498214	15/32" (12 mm)	3 1/8" (80 mm)	1 1/32" (26 mm)	DominoXL DF700	150
FS498215		3 15/16" (100 mm)			120
FS498216		3 15/16" (100 mm)			100
FS498217	5 1/2" (140 mm)	1 1/32" (26 mm)	DominoXL DF700	90	
<b>New!</b> FS201499	9/16" (14 mm)	2 15/16" (75 mm)	1 3/32" (28 mm)	DominoXL DF700	104
FS498218		3 15/16" (100 mm)			80
FS498219		5 1/2" (140 mm)			70

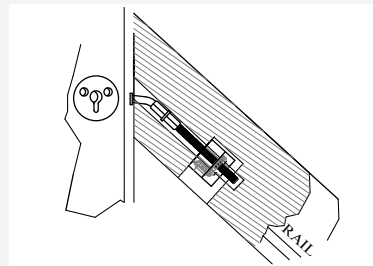
## ANGLED SLIPFIX RAILBOLT

Angled Slipfix Railbolt is the latest product for the stair industry and is the sister product to the Slipfix Railbolt, this connector particularly designed for joining handrail to a post at an acute angle (upstairs joint).

The angled shaft is preinstalled into the rail with a slight protrusion then can be engaged to the fitted keyhole disc in the post. Once the connection is made tightening takes place using the Zipbolt gear drive system and a side ratchet tool or Allen key providing a perfect joint.

Sold by unit

PRODUCT	MATERIAL	QTY/BOX
423513950	Steel	300

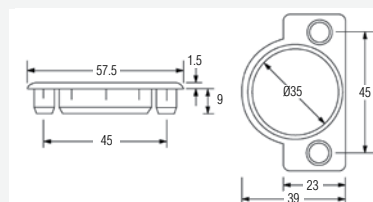


## COVER PLUGS FOR HINGE HOLE

Material: Plastic

Sold by unit

PRODUCT	Ø	FINISH	QTY/BOX
<b>New!</b> 33006090	35 mm	Black	2000
330060992		Maple	
33006030		White	



## STRIPLOX JOINING SYSTEM

Aesthetically, Striplox replaces visible screws, brackets, fittings, connectors, latches, cam and dowels, mounting blocks and other mechanical components providing leading edge design solutions.

- No visible fixings - Fully concealed joint
- Eliminates damage - Install panels during final build
- Reduces labor costs with fast on site assembly
- No tools or trade skills required for assembly
- Delivers strength, durability and versatility in one action by transferring load capacities evenly over the entire joint
- Can be surface or rebate mounted in either vertical or horizontal positions
- Variety of mounting options glue and or screw fix
- Designed using the internationally recognized 32 system

*Striplox Connectors and Joiners are a fast, reusable, scalable and adaptable to provide a permanent or temporary joint for a range of applications such as: wall and ceiling panels, cabinetry, commercial design, wardrobes and closets.*

### STRIPLOX PRO 23 CONCEALED CONNECTOR

For narrow profile for easier concealment

The Striplox Pro 23 is ideal for installing hanging cabinets, floating shelves, bookcases, artwork frames, mirrors and feature panels.

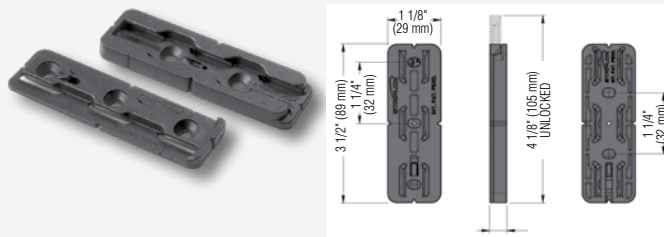
Sold by pair

PRODUCT	WIDTH	LENGHT	THICKNESS	LOAD CAPACITY (UP TO)	QTY/BOX
422202390	1 1/8" (28 mm)	3 1/4" (83 mm)	3/8" (9 mm)	350 lb (160 kg)	100 pairs

Suggested product(s):

PRODUCT	DESCRIPTION
4222023	Pro23 jig
4222001	Mark out template
422202SK	Striplox starter kit

New!



### STRIPLOX PRO 55 CONCEALED CONNECTOR

For extra heavy-duty applications

The Striplox Pro 55 connectors are the same design as the Pro 23 but with a larger size for extra heavy-duty requirements.

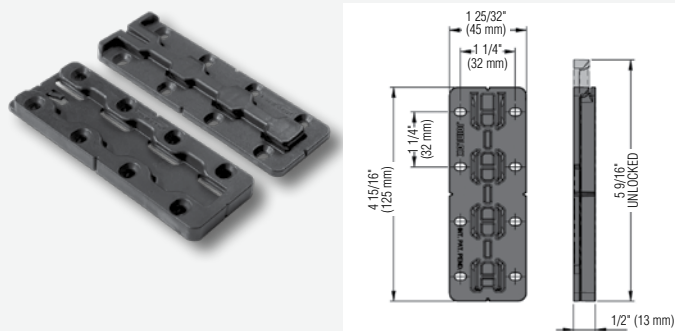
Sold by pair

PRODUCT	WIDTH	LENGHT	THICKNESS	LOAD CAPACITY (UP TO)	QTY/BOX
422205590	1 25/32" (45 mm)	4 15/16" (125 mm)	1/2" (13 mm)	440 lb (200 kg)	50 pairs

Suggested product(s):

PRODUCT	DESCRIPTION
4222055	Pro55 jig
4222001	Mark out template
422202SK	Striplox starter kit

New!



## STRIPLOX JOINING SYSTEM

### STRIPLOX CLIP 50 CONNECTOR

Small footprint for precise applications

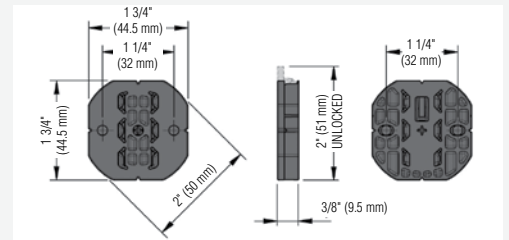
Striplox Clip 50 Connector system offers a simple yet effective solution to fixing furniture, panels, cabinetry and interior fittings. Easy assembly with swiveling lock key.

Sold by pair

PRODUCT	WIDTH	Ø	THICKNESS	LOAD CAPACITY (UP TO)	QTY/BOX
422205090	1 3/4" (44 mm)	1 15/16" (50 mm)	3/8" (9 mm)	275 lb (125 kg)	100 pairs

#### Suggested product(s):

PRODUCT	DESCRIPTION
4222055	Pro55 jig
4222001	Mark out template
<b>New!</b> 422202SK	Striplox starter kit



### STRIPLOX MEGALOX CONNECTOR

For bench and table top installations of mitre joint, "T" joint or box joints

The Striplox Megalox is the perfect solution for office, bathroom, furniture, toilet partitions and locker room installations and manufacturing. Ideal in mitre joints subject to substrate thickness.

Sold by pair

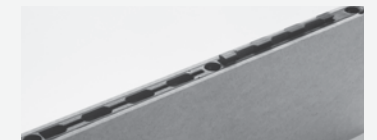
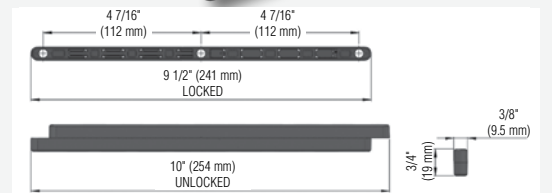
PRODUCT	WIDTH	LENGHT	THICKNESS	LOAD CAPACITY (UP TO)	QTY/BOX
422224190	1 1/8" (28 mm)	3 1/2" (90 mm)	3/8" (9 mm)	352 lb (160 kg)	50 pairs

#### Required product(s):

PRODUCT	DESCRIPTION
4222010	Router bit 13/32"

#### Suggested product(s):

PRODUCT	DESCRIPTION
4222002	Adhesive
<b>New!</b> 422202SK	Striplox starter kit



### STRIPLOX SHELFLOX EXTENDABLE CONNECTOR

Shelves can be mounted parallel to each other, reducing materials such as end panels

- Quick, easy and strong
- 5/8" (16 mm) compatible
- Shelf Depth: 8 1/2" (220 mm) to 24" (600 mm)

Sold by set

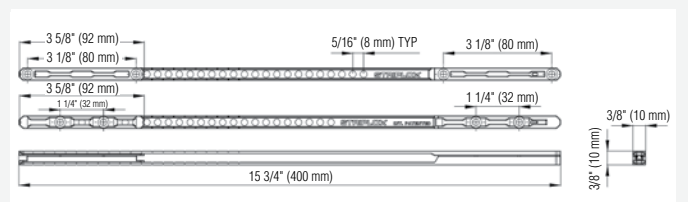
PRODUCT	WIDTH	LENGHT	THICKNESS	LOAD CAPACITY (UP TO)	QTY/BOX
<b>New!</b> 422240090	1 3/4" (44 mm)	16" (400 mm)	3/8" (9 mm)	275 lb (125 kg)	20 sets

#### Required product(s):

PRODUCT	DESCRIPTION
4222010	Router bit 13/32"

#### Suggested product(s):

PRODUCT	DESCRIPTION
4222002	Adhesive
<b>New!</b> 422202SK	Striplox starter kit



## STRIPLOX MINI 60 INVISIBLE JOINER

Invisible joining solutions

The Striplox Mini 60 connectors are an invisible joiner suited to everyday builds, custom cabinets, wood joints and anywhere else you commonly use biscuit joints, fasteners or cam and dowel products.

- Assembly with standard 100 mm biscuit cutter
- Can be used in substrates of 12 mm thickness and upwards
- Joining will not interfere with substrate finish

Sold by pair

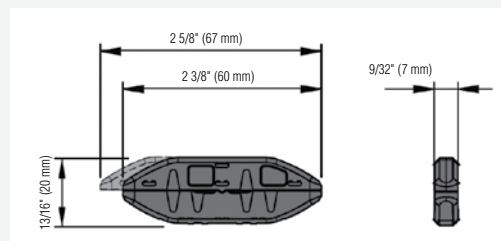
PRODUCT	WIDTH	LENGHT	THICKNESS	LOAD CAPACITY (UP TO)	QTY/BOX
422206090	3/4" (20 mm)	2 3/8" (60 mm)	1/4" (7 mm)	175 lb (80 kg)	200 pairs

### Required product(s):

PRODUCT	DESCRIPTION
4222007	Router bit 9/32"

### Suggested product(s):

PRODUCT	DESCRIPTION
4222002	Adhesive
4222001	Mark out template
<b>New!</b> 422202SK	Striplox starter kit



## STRIPLOX MINI 120 INVISIBLE JOINER

Invisible joining solutions

The Striplox Mini 120 connectors enable a rapid assembly with a fully concealed joining and fastening solution to any piece of cabinetry, furniture or design application.

- Joining will not interfere with substrate finish
- Can be used in substrates of 12 mm thickness and upwards

Sold by pair

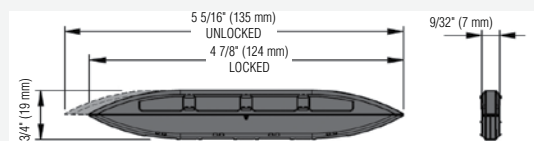
PRODUCT	WIDTH	LENGHT	THICKNESS	LOAD CAPACITY (UP TO)	QTY/BOX
422212090	3/4" (20 mm)	4 7/8" (124 mm)	1/4" (7 mm)	260 lb (119 kg)	100 pairs

### Required product(s):

PRODUCT	DESCRIPTION
4222007	Router bit 9/32"

### Suggested product(s):

PRODUCT	DESCRIPTION
4222002	Adhesive
4222001	Mark out template
<b>New!</b> 422202SK	Striplox starter kit



# STRIPLOX JOINING SYSTEM

## STRIPLOX 90° RIGHT ANGLE JOINER

Rigid and strong 90° angle connector

Striplox 90D is an innovative engineered solution designed to quickly and easily connect any right angle joints. Ideal for common joints, including mitre joints, butt joints, tee joints, square joints, frame joints and flush joints. Striplox 90D is the must use connector for achieving the highest level of satisfaction. The Striplox patented design pulls the substrates firmly together to form a strong and tight joint in one simple action by distributing the loads evenly over the entire connector and joint.

The advantages of the Striplox 90° Right Angle Joiner over conventional fasteners and connectors include unmatched cost savings in transportation, assembly and labour. These savings are achieved by enabling rapid assembly times and an effortless joining operation.

These connectors require no tools or loose fasteners on site or point of use during assembly. Unlike other 90 degree products on the market, Striplox 90D offers a more stable positioning of the joint as the length of the product produces a perfect 90 degree joint every time.

The Striplox 90D connectors are suited for a range of building materials including timber, medium density fibreboard (MDF), particleboard, plastic, lightweight sandwich, composites and more.

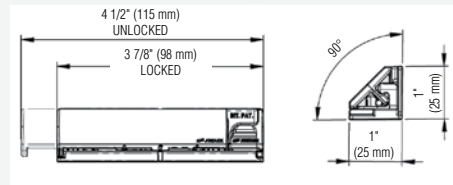
Available in Polypropylene (PP) and Glass Reinforced Nylon (GRN) for jobs that require increased strength, stiffness and abrasion resistance.

Sold by set

PRODUCT	MATERIAL	WIDTH	LENGHT	LOAD CAPACITY (UP TO)	FINISH	QTY/BOX
422209090	Glass Reinforced	1" (25 mm)	3 13/16" (98 mm)	440 lb (200 kg)	Black	50 sets
422209030	Nylon (GRN)				White	
4222905190	Polypropylene (PP)	1" (25 mm)	2" (51 mm)		Black	250 sets

### Suggested product(s):

PRODUCT	DESCRIPTION
4222001	Mark out template
<b>New!</b> 422202SK	Striplox starter kit



## STRIPLOX 180° JOINER

Joins almost any 180° joint in numerous applications

Create custom made boardroom, conference, kitchen and benchtop tables, workstations, retail fixtures and large scale exhibition displays.

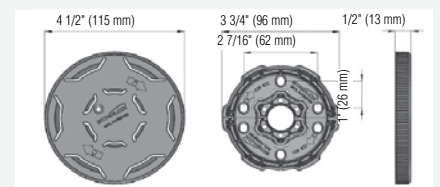
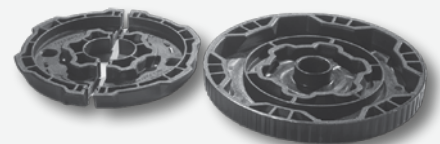
- Striplox 180° can be concealed and orientated for vertical, horizontal or under mount assembly
- Variety of mounting options glue and or screw fix (8G/Euro)

Sold by set

PRODUCT	DEPTH	Ø	LOAD CAPACITY (UP TO)	FINISH	QTY/BOX
422218090	1/2" (13 mm)	4 1/2" (115 mm)	352 lb (160 kg)	Black	20 sets
422218030				White	

### Suggested product(s):

PRODUCT	DESCRIPTION
4222001	Mark out template
<b>New!</b> 422202SK	Striplox starter kit





## STRIPLOX GRIPLOX #20 BISCUIT

Doesn't require glue to grip

Traditional wood biscuits lose their shape and swell up in atmospheric conditions, resulting in substrate blowout. The Striplox grip biscuit is the new solution. It will never lose shape, and its innovative gripping spikes secure your project in place, providing a superior result every time.

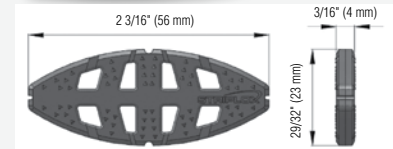
- Quick and easy applications
- Removes the need to use clamps
- No drying time
- Flush finish every time

Sold by minimum of 50 units

PRODUCT	NUMBER	QTY/BOX
422202090	#20	200

Suggested product(s):

PRODUCT	DESCRIPTION
<b>New!</b> 422202SK	Striplox starter kit



## CLEAR MARK OUT TEMPLATE

The Striplox Mark out template speeds up the manufacturing processes by enabling the easy fitment of the Striplox range of joining solutions. The tough and durable clear plastic template features center points, markings, slot guides and can be used as a 3 mm packer for the following Striplox products:

- Striplox Pro 23 concealed connector
- Striplox Pro 55 concealed connector
- Striplox Clip 50 connector
- Striplox Mini 60 invisible joiner
- Striplox Mini 120 invisible joiner
- Striplox 90° right angle joiner
- Striplox 180° joiner

Sold by unit

PRODUCT	QTY/BOX
4222001	48



## ROUTER BITS FOR STRIPLOX

Tungsten Carbide router bits produce an accurate and reliable positioning slot or cavity to suite the assembly of Striplox connectors.

Sold by unit

PRODUCT	MATERIAL	CUTTING Ø	SHANK Ø	OVERALL LENGTH	CUT DEPTH	QTY/BOX
4222007	Tungsten Carbide	9/32" (7 mm)	1/4" (6 mm)	2 3/8" (60 mm)	25/32" (20 mm)	48
4222010		3/8" (10 mm)				



## LIQUIDLOX ADHESIVE

Liquidlox is a general purpose, middle viscosity, high strength fast cure adhesive.

- Ethyl cyanoacrylate adhesive
- Color: colorless transparent
- Service temperature range: -50 to 80° C
- 15 second quick cure

Sold by unit

PRODUCT	WEIGHT	FINISH	QTY/BOX
4222002	20 g	Transparent / Clear	48



