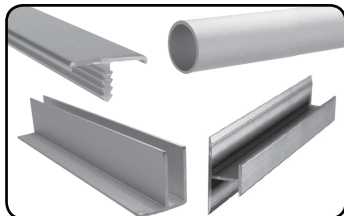


Molding, Railing and Bathroom Partition Hardware

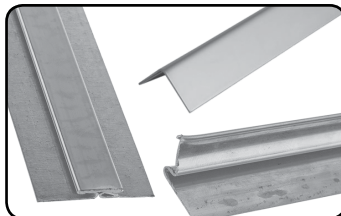
Aluminum Moldings

Section 21A



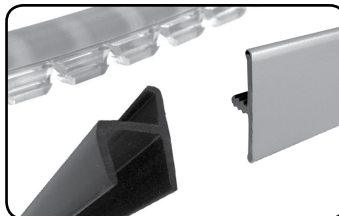
Stainless Steel Moldings

Section 21B



Functional Moldings

Section 21C



Tubular Hardware

Section 21D



Bathroom Partition Hardware

Section 21E



SECTION 21

SCREWS AND FASTENERS	1
FURNITURE EQUIPMENT	2
HINGES	3
SLIDES	4
CASTERS AND LEGS	5
KITCHEN SOLUTIONS	6
CLOSET SOLUTIONS	7
LIGHTING SOLUTIONS	8
SINKS AND FAUCETS	9
OFFICE	10
SLIDING DOORS SYSTEMS	11
GLASS HARDWARE	12
PANELS AND SURFACES	13
EDGEBANDING	14
CABINET DOORS AND DRAWERS	15
CORBELS, FLOOR REGISTERS AND WINE CELLARS	16
GLUES, SILICONES, CAULK AND INSULATING	17
TOOLS AND SECURITY	18
FINISHING PRODUCTS, ABRASIVES AND SHOP SUPPLIES	19
COMMERCIAL DISPLAY HARDWARE	20
MOLDING, RAILING AND BATHROOM PARTITION HARDWARE	21

I Molding, Railing and Bathroom Hardware I

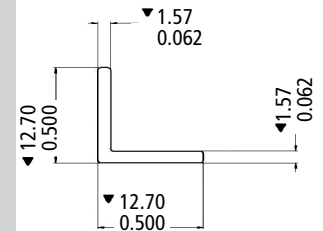
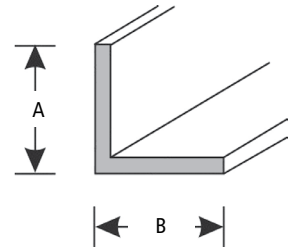
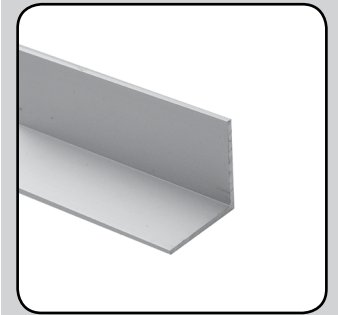
Aluminum Moldings

Richelieu Section 21A

90° Angle Molding, 2 Equal Sides

Sold by length

PRODUCT	FINISH	HEIGHT (A)	WIDTH (B)	THICKNESS	LENGTH
D010057	Satin Aluminum (VC)	1/2"	1/2"	1/16"	12'
D010063	Chrome (140)	1/2"	1/2"	5/64"	12'
D010065	Satin Aluminum (VC)	3/4"	3/4"	1/16"	12'
D010069	Gold (130)	3/4"	3/4"	1/16"	12'
D010071	Chrome (140)	3/4"	3/4"	1/16"	12'
D010072	Satin Aluminum (VC)	1"	1"	1/16"	12'
D010076	Chrome (140)	1"	1"	1/16"	12'
D011073	Satin Aluminum (VC)	1-1/2"	1-1/2"	7/64"	12'
D01271312	Satin Aluminum (VC)	1"	1"	1/8"	12'
D011072	Chrome (140)	1-1/2"	1-1/2"	7/64"	12'
D010064	Black (90)	3/4"	3/4"	3/32"	12'
D300083	Mill Finish (M)	3/4"	3/4"	1/8"	12'
D010074	Gold (130)	1"	1"	1/16"	12'
D0100570810	Satin Aluminum (VC)	1/2"	1/2"	1/16"	8'
D0100650810	Satin Aluminum (VC)	3/4"	3/4"	3/32"	8'
D01007108140	Chrome (140)	3/4"	3/4"	3/32"	8'
D0100720810	Satin Aluminum (VC)	1"	1"	1/16"	8'
D01007608140	Chrome (140)	1"	1"	1/16"	8'
D0110730810	Satin Aluminum (VC)	1-1/2"	1-1/2"	7/64"	8'
D0127130810	Satin Aluminum (VC)	1"	1"	1/8"	8'
MRB449M	Mill Finish (M)	3/4"	3/4"	1/8"	12'
MRBNYM613M	Mill Finish (M)	3"	3"	1/8"	12'
12321210	Satin Aluminum (VC)	3/4"	3/4"	1/8"	12'
MRB1569M	Mill Finish (M)	1-1/2"	1-1/2"	1/16"	12'
MRB269M	Mill Finish (M)	1/2"	1/2"	1/16"	12'
MRB469S	Brushed Aluminum Texture (S)	1"	1"	1/16"	12'
MRB369S	Brushed Aluminum Texture (S)	3/4"	3/4"	1/16"	12'
MRB469M	Mill Finish (M)	1"	1"	1/16"	12'
MRB1569VC	Satin Aluminum (VC)	1-1/2"	1-1/2"	1/16"	12'
MRB156918M	Mill Finish (M)	1-1/2"	1-1/2"	1/8"	12'
MRB749M	Mill Finish (M)	1"	1"	1/8"	12'
MRB8469M	Mill Finish (M)	2"	2"	1/8"	12'
MRB5569M	Mill Finish (M)	1-1/4"	1-1/4"	1/8"	12'
MRB26918M	Mill Finish (M)	1/2"	1/2"	1/8"	12'
MRB4469VC	Satin Aluminum (VC)	2"	2"	1/16"	12'
MRB369M	Mill Finish (M)	3/4"	3/4"	1/16"	12'
MRB8469VC	Satin Aluminum (VC)	2"	2"	1/8"	12'
MRB749S	Brushed Aluminum Texture (S)	1"	1"	1/8"	12'
MRB26918S	Brushed Aluminum Texture (S)	1/2"	1/2"	1/8"	12'
12141210	Satin Aluminum (VC)	1"	1"	3/64"	12'
12161210	Satin Aluminum (VC)	1-1/4"	1-1/4"	1/16"	12'



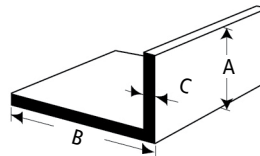
Molding, Railing and Bathroom Hardware |

Aluminum Moldings

90° Angle Aluminum Molding, 2 Unequal Sides

Sold by length

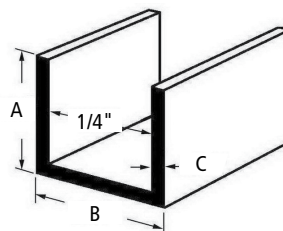
PRODUCT	FINISH	HEIGHT (A)	WIDTH (B)	THICKNESS (C)	LENGTH
D010054	Chrome (140)	1/2"	3/4"	1/8"	12'
D010055	Satin Aluminum (VC)	1/2"	3/4"	1/8"	12'
D014111210	Satin Aluminum (VC)	1/2"	1"	1/16"	12'
D0141112140	Chrome (140)	1/2"	1"	1/16"	12'
D0141112170	Stainless Steel (170)	1/2"	1"	1/16"	12'
D0100550810	Satin Aluminum (VC)	1/2"	3/4"	1/16"	8'
D014110810	Satin Aluminum (VC)	1/2"	1"	1/16"	8'
D014351210	Satin Aluminum (VC)	3/4"	1-1/2"	1/8"	12'
D0143512140	Chrome (140)	3/4"	1-1/2"	1/8"	12'
D0143512170	Stainless Steel (170)	3/4"	1-1/2"	1/8"	12'
D014350810	Satin Aluminum (VC)	3/4"	1-1/2"	1/8"	8'



1/4" U-Shaped Aluminum Molding

Sold by length

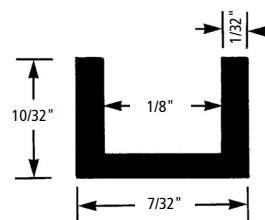
PRODUCT	FINISH	HEIGHT (A)	WIDTH (B)	THICKNESS (C)	LENGTH
D010078	Chrome (140)	3/8"	3/8"	1/16"	12'
D010079	Satin Aluminum (VC)	3/8"	3/8"	1/16"	12'
D010077	Gold (130)	3/8"	3/8"	1/16"	12'
D01007808170	Stainless Steel (170)	3/8"	3/8"	1/16"	8'
D0100790810	Satin Aluminum (VC)	3/8"	3/8"	1/16"	8'
MRB257S	Brushed Aluminum Texture (S)	3/8"	3/8"	1/16"	12'
MRB757S	Brushed Aluminum Texture (S)	10/32"	7/32"	1/32"	12'



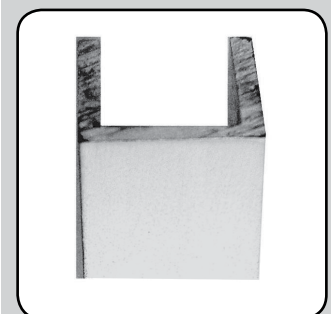
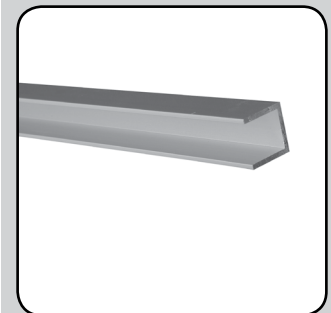
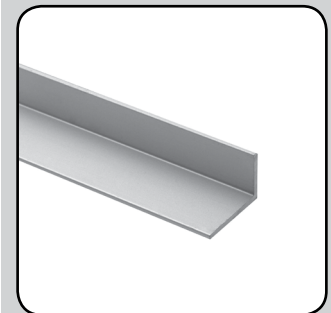
1/8" U-Shaped Aluminum Molding

Sold by length

PRODUCT	FINISH	HEIGHT	WIDTH	THICKNESS	LENGTH
MRB757S	Brushed Aluminum Texture (S)	10/32"	7/32"	1/32"	12'



Richelieu Section 21A



- 1 SCREWS AND FASTENERS
- 2 FURNITURE EQUIPMENT
- 3 HINGES
- 4 SLIDES
- 5 CASTERS AND LEGS
- 6 KITCHEN SOLUTIONS
- 7 CLOSET SOLUTIONS
- 8 LIGHTING SOLUTIONS
- 9 SINKS AND FAUCETS
- 10 OFFICE
- 11 SLIDING DOORS
- 12 GLASS HARDWARE
- 13 PANELS AND SURFACES
- 14 EDGE-BANDING
- 15 CABINET DOORS AND DRAWERS
- 16 CORBELS AND FLOOR REGISTERS
- 17 GLUES, SILICONES, CAULK AND INSULATING
- 18 TOOLS AND SECURITY
- 19 FINISHING PRODUCTS AND SHOP SUPPLIES
- 20 COMMERCIAL DISPLAY HARDWARE
- 21 MOLDING, RAILING AND BATHROOM HARDWARE

Molding, Railing and Bathroom Hardware |

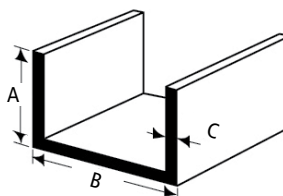
Aluminum Moldings

Richelieu Section 21A

3/8" U-Shaped Aluminum Molding

Sold by length

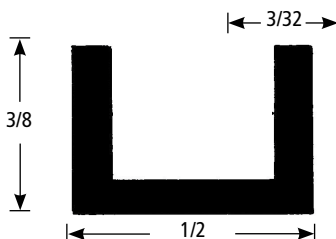
PRODUCT	FINISH	HEIGHT (A)	WIDTH (B)	THICKNESS (C)	LENGTH
1614010	Satin Aluminum (VC)	1/2"	1/2"	1/16"	12'
1614140	Chrome (140)	1/2"	1/2"	1/16"	12'
16140810	Satin Aluminum (VC)	1/2"	1/2"	1/16"	8'
MRB57M	Mill Finish (M)	5/16"	1/2"	1/16"	12'



5/16" U-Shaped Aluminum Molding

Sold by length

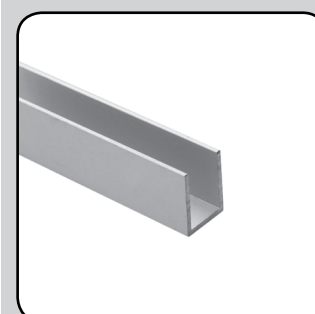
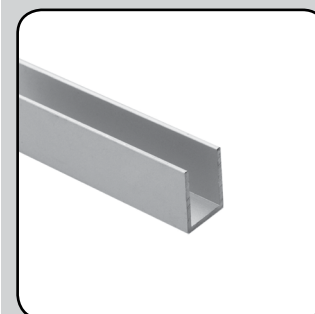
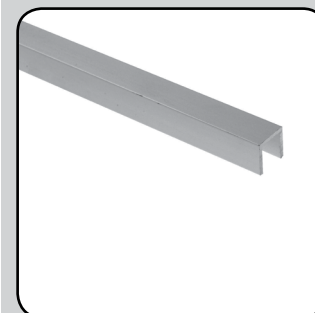
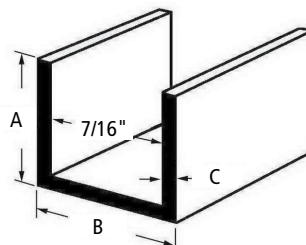
PRODUCT	FINISH	HEIGHT	WIDTH	THICKNESS	LENGTH
MRB148S	Brushed (S)	3/8"	1/2"	3/32"	12'
MRB148M	Mill Finish (M)	3/8"	1/2"	3/32"	12'



7/16" U-Shaped Aluminum Molding

Sold by length

PRODUCT	FINISH	HEIGHT (A)	WIDTH (B)	THICKNESS (C)	LENGTH
D012181	Satin (10)	3/4"	9/16"	1/16"	12'
D012182	Chrome (140)	3/4"	9/16"	1/16"	12'
D012183	Gold (130)	3/4"	9/16"	1/16"	12'
D012184	Black (90)	3/4"	9/16"	1/16"	12'
D0121810810	Satin (10)	3/4"	9/16"	1/16"	8'
D01218208170	Stainless Steel (170)	3/4"	9/16"	1/16"	8'
MRB547S	Brushed Aluminum (S)	9/16"	9/16"	1/16"	12'



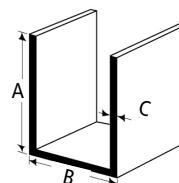
Molding, Railing and Bathroom Hardware |

Aluminum Moldings

1/2" U-Shaped Aluminum Molding

Sold by length

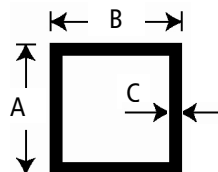
PRODUCT	FINISH	HEIGHT (A)	WIDTH (B)	THICKNESS (C)	LENGTH
D010058	Satin (10)	1"	5/8"	1/16"	12'
D010066	Chrome (140)	1"	5/8"	1/16"	12'
D010081	Chrome (140)	5/8"	5/8"	1/16"	12'
D010082	Satin (10)	5/8"	5/8"	1/16"	12'
D016411210	Satin (10)	1/2"	3/4"	1/8"	12'
D0164112140	Chrome (140)	1/2"	3/4"	1/8"	12'
D0100580810	Satin (10)	1"	5/8"	1/16"	8'
D01008108140	Chrome (140)	5/8"	5/8"	1/16"	8'
D0100820810	Satin (10)	5/8"	5/8"	1/16"	8'
MRBNYM143M	Mill Finish (M)	3/4"	3/4"	1/8"	12'
MRB847S	Brushed Aluminum (S)	9/16"	5/8"	1/16"	12'



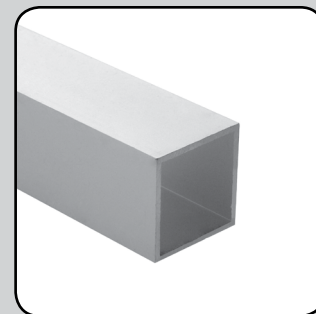
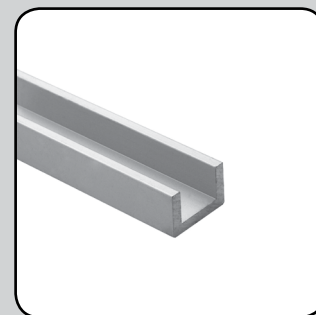
Aluminum Square Tube

Sold by length

PRODUCT	FINISH	HEIGHT (A)	WIDTH (B)	THICKNESS (C)	LENGTH
D0126391210	Satin (10)	2"	2"	1/8"	12'
D01263912140	Chrome (140)	2"	2"	1/8"	12'
D0126941210	Satin (10)	1/2"	1/2"	3/64"	12'
D0126951210	Satin (10)	1"	1"	1/16"	12'
D01269512140	Chrome (140)	1"	1"	1/16"	12'
D032121210	Satin (10)	3/4"	3/4"	1/32"	12'
D0321212140	Chrome (140)	3/4"	3/4"	1/32"	12'
D032161210	Satin (10)	1-1/2"	1-1/2"	1/16"	12'
D0321612140	Chrome (140)	1-1/2"	1-1/2"	1/16"	12'
MRBX213M	Mill Finish (M)	1"	1"	1/16"	12'



Richelieu Section 21A



- 1 SCREWS AND FASTENERS
- 2 FURNITURE EQUIPMENT
- 3 HINGES
- 4 SLIDES
- 5 CASTERS AND LEGS
- 6 KITCHEN SOLUTIONS
- 7 CLOSET SOLUTIONS
- 8 LIGHTING SOLUTIONS
- 9 SINKS AND FAUCETS
- 10 OFFICE
- 11 SLIDING DOORS
- 12 GLASS HARDWARE
- 13 PANELS AND SURFACES
- 14 EDGE-BANDING
- 15 CABINET DOORS AND DRAWERS
- 16 CORBELS AND FLOOR REGISTERS
- 17 GLUES, SILICONES, CAULK AND INSULATING
- 18 TOOLS AND SECURITY
- 19 FINISHING PRODUCTS AND SHOP SUPPLIES
- 20 COMMERCIAL DISPLAY HARDWARE
- 21 MOLDING, RAILING AND BATHROOM HARDWARE

Molding, Railing and Bathroom Hardware |

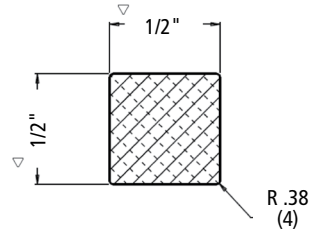
Aluminum Moldings

Richelieu Section 21A

Solid Square Bar

Sold by length

PRODUCT	FINISH	HEIGHT	WIDTH	LENGTH
24081210	Satin (10)	1/2"	1/2"	12'



Aluminum Round Tube

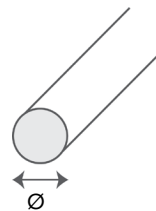
Sold by length

PRODUCT	FINISH	Ø	THICKNESS	LENGTH
D030121210	Satin (10)	1/2"	1/32"	12'
D0301212140	Chrome (140)	1/2"	1/32"	12'
D030161210	Satin (10)	3/4"	1/32"	12'
D030301210	Satin (10)	1"	1/16"	12'
D0303012140	Chrome (140)	1"	1/16"	12'

Aluminum Rod

Sold by length

PRODUCT	FINISH	Ø	LENGTH
28101210	Satin (10)	1/4"	12'
28121210	Satin (10)	3/8"	12'
28141210	Satin (10)	1/2"	12'

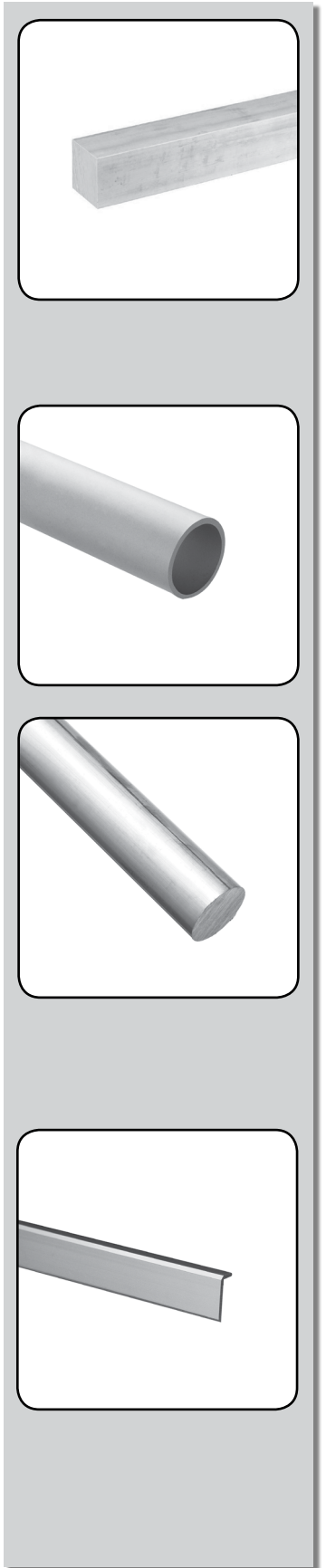
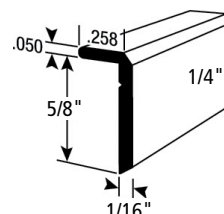


5/8" L-Shaped Finishing Aluminum Molding

- Finishing moulding for mirrors. Easy to install

Sold by length

PRODUCT	FINISH	HEIGHT	WIDTH	THICKNESS	LENGTH
D010048	Gold (130)	1/4"	1/4"	1/16"	12'
D010049	Chrome (140)	1/4"	1/4"	1/16"	8'
D010050	Chrome (140)	1/4"	1/4"	1/16"	12'
D01005010	Satin (10)	1/4"	1/4"	1/16"	12'



CCRMUS 2017

Molding, Railing and Bathroom Hardware |

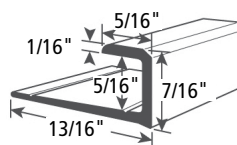
Aluminum Moldings

5/16" J-Shaped Bottom Finishing Aluminum Molding

- For mirrors. Easy to install

Sold by length

PRODUCT	FINISH	HEIGHT	WIDTH	THICKNESS	LENGTH
D010031	Gold (130)	13/16"	7/16"	1/16"	12'
D010032	Chrome (140)	13/16"	7/16"	1/16"	8'
D010033	Chrome (140)	13/16"	7/16"	1/16"	12'
D01003310	Satin (10)	13/16"	7/16"	1/16"	12'
D010029	Bronze (164)	13/16"	7/16"	1/16"	12'
D010027	Black (90)	13/16"	7/16"	1/16"	12'

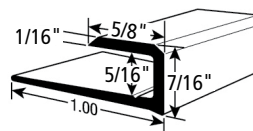


5/16" J-Shaped Top Finishing Aluminum Molding

- For mirrors. Easy to install

Sold by length

PRODUCT	FINISH	HEIGHT	WIDTH	THICKNESS	LENGTH
D010040	Chrome (140)	1"	7/16"	1/16"	8'
D010039	Gold (130)	1"	7/16"	1/16"	12'
D010041	Chrome (140)	1"	7/16"	1/16"	12'
D01004110	Satin (10)	1"	7/16"	1/16"	12'
D010035	Black (90)	1"	7/16"	1/16"	12'
D010037	Bronze (164)	1"	7/16"	1/16"	12'

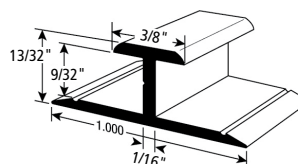


9/32" H-Finishing Aluminum Molding

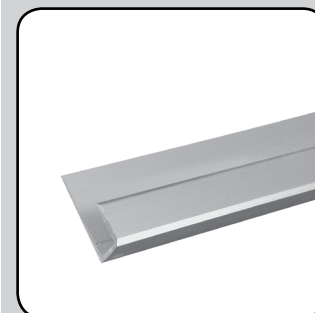
- Easy-to-install, 180° finishing molding for joining two pieces

Sold by length

PRODUCT	FINISH	FRONT FACING HEIGHT	HEIGHT	WIDTH	THICKNESS	LENGTH
D010026	Chrome (140)	3/8"	13/32"	1"	1/16"	8'
MRB850P	Chrome (140)	1/2"	13/32"	1-1/4"	1/16"	8'



Richelieu Section 21A



CCRMUS 2017

Page 21A7

Molding, Railing and Bathroom Hardware |

Aluminum Moldings

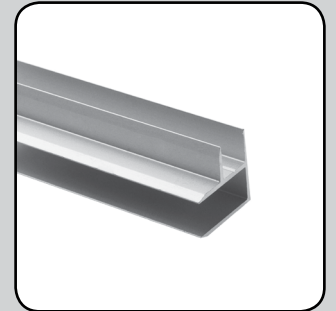
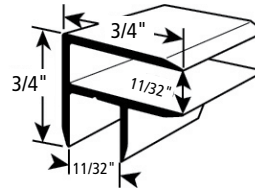
Richelieu Section 21A

11/32" 90° Corner Finishing Aluminum Molding

- For mirrors. Easy to install

Sold by length

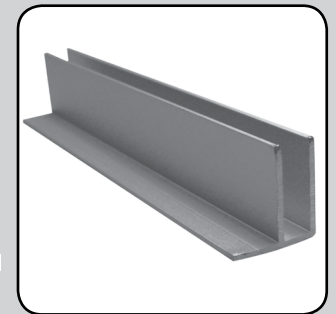
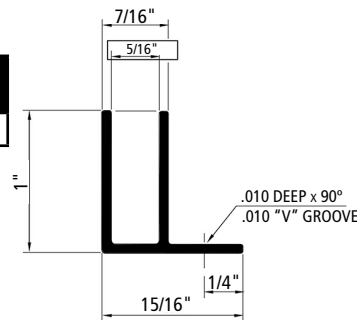
PRODUCT	FINISH	HEIGHT	WIDTH	THICKNESS	LENGTH
D051401210	Satin (10)	3/4"	3/4"	1/16"	12'
D0514012140	Chrome (140)	3/4"	3/4"	1/16"	12'



F-Channel Aluminum Molding – 12' x 1/4" x 1" 1/2" Lip

Sold by length

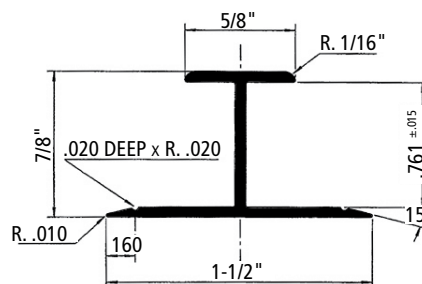
PRODUCT	FINISH	HEIGHT	WIDTH	INTERIOR MEASUREMENT	LENGTH
71301210	Satin (10)	1"	15/16"	1/4"	12'



H-Aluminum Molding

Sold by length

PRODUCT	FINISH	HEIGHT	WIDTH	FRONT FACING HEIGHT	INTERIOR MEASUREMENT	BORED	LENGTH
31311210	Satin (10)	29/32"	1-1/2"	5/8"	25/32"	No	12'



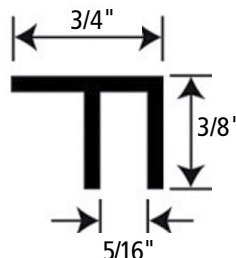
Molding, Railing and Bathroom Hardware |

Aluminum Moldings

F-Aluminum Molding

Sold by length

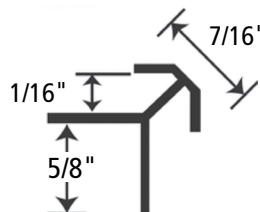
PRODUCT	FINISH	HEIGHT	WIDTH	LENGTH
MRBNYM235BC	Chrome (140)	3/8"	3/4"	12'



Corner Aluminum Molding

Sold by length

PRODUCT	FINISH	HEIGHT	WIDTH	THICKNESS	PANEL THICKNESS	BORED	LENGTH
MRB252P	Polished	57/64"	7/16"	5/8"	1/16"	No	12'

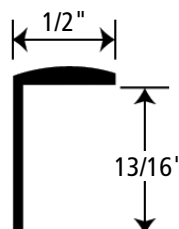


Corner Aluminum Molding

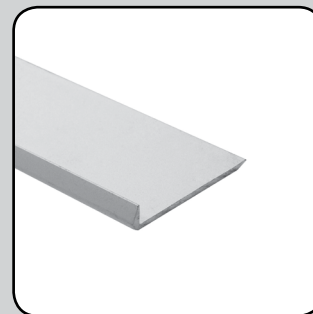
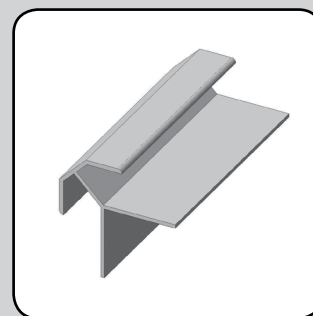
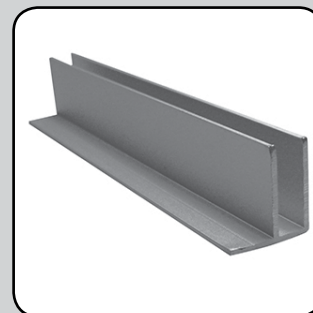
• Finishing molding for mirrors, furniture and counters. Easy to install. Perfect for protecting front facades of commercial counters

Sold by length

PRODUCT	FINISH	WIDTH	THICKNESS	OVERALL DIMENSIONS – HEIGHT	LENGTH
MRB669BCH	Chrome (140)	13/16"	1/2"	1/2"	12'
MRB128PH	Polished	7/8"	1/4"	15/16"	12'
MRBY968BCH	Chrome (140)	11/16"	1/4"	5/8"	12'



Richelieu Section 21A



- 1 SCREWS AND FASTENERS
- 2 FURNITURE EQUIPMENT
- 3 HINGES
- 4 SLIDES
- 5 CASTERS AND LEGS
- 6 KITCHEN SOLUTIONS
- 7 CLOSET SOLUTIONS
- 8 LIGHTING SOLUTIONS
- 9 SINKS AND FAUCETS
- 10 OFFICE
- 11 SLIDING DOORS
- 12 GLASS HARDWARE
- 13 PANELS AND SURFACES
- 14 EDGE-BANDING
- 15 CABINET DOORS AND DRAWERS
- 16 CORBELS AND FLOOR REGISTERS
- 17 GLUES, SILICONES, CAULK AND INSULATING
- 18 TOOLS AND SECURITY
- 19 FINISHING PRODUCTS AND SHOP SUPPLIES
- 20 COMMERCIAL DISPLAY HARDWARE
- 21 MOLDING, RAILING AND BATHROOM HARDWARE

CCRMUS 2017

Molding, Railing and Bathroom Hardware |

Aluminum Moldings

Richelieu Section 21A

Aluminum Z-Bar Hanger

- Can be used to hang panels, mirrors, cabinets, or speakers. Mill finish

Sold by length

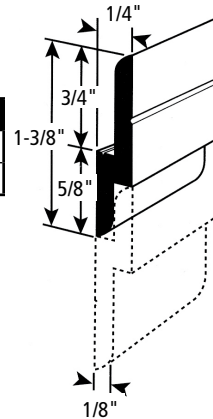
PRODUCT	FINISH	SPEC.	HEIGHT	WIDTH	THICKNESS	BORED	LENGTH
5075070	Mill Finish (M)	Pre-Drilled	1-25/32"	3/16"	3/32"	Yes	2-1/2"
5075080	Mill Finish (M)	Pre-Drilled	1-25/32"	3/16"	3/32"	Yes	10'
MRBNYM111M	Mill Finish (M)	—	1-25/32"	3/16"	3/32"	No	10'

Z-Shaped Aluminum Molding

- Solid aluminum Z-shaped molding. Ideal for cabinets, panels, and furniture for showrooms

Sold by length

PRODUCT	FINISH	HEIGHT	WIDTH	THICKNESS	LENGTH
318712D10	Mill Finish (M)	1-3/8"	1/4"	1/8"	12'
318708D10	Mill Finish (M)	1-3/8"	1/4"	1/8"	8'

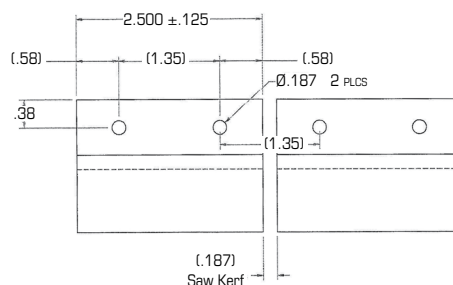


Z-Bar Aluminum Hanger

Can be used to hang panels, mirrors, cabinets, or speakers. Mill finish.

We strongly recommend that you order the products TUBECART and CAP (two CAPs per TUBECART) to package this product. Please note that if you do not, returns or claims for packaging defects will not be accepted. Feel free to contact us at info@richelieu.com with questions.

PRODUCT	FINISH	HEIGHT	WIDTH	THICKNESS	LENGTH
5075070	Mill Finish (M)	1-25/32"	3/16"	2-1/2"	250
5075080	Mill Finish (M)	1-25/32"	3/16"	120"	50

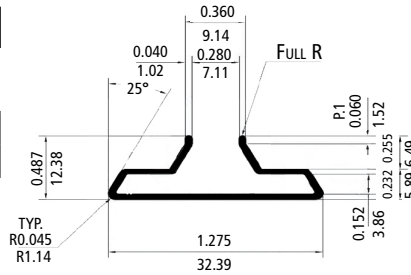


Molding, Railing and Bathroom Hardware | Aluminum Moldings

Slot Wall Aluminum Insert

Sold by length

PRODUCT	FINISH	LENGTH
20608D10	Mill Finish (M)	8'

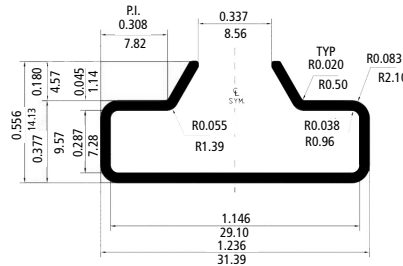


Slot Wall Aluminum Insert

- This insert makes your slot wall panels stronger

Sold by length

PRODUCT	FINISH	LENGTH
N960010	Mill Finish (M)	8'

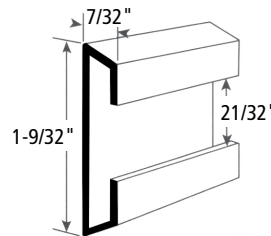


Slot Wall Aluminum Insert

- This insert strengthens your slot wall panels

Sold by length

PRODUCT	FINISH	HEIGHT	WIDTH	THICKNESS	LENGTH
19508D10	Mill Finish (M)	1-9/32"	7/32"	21/32"	8'

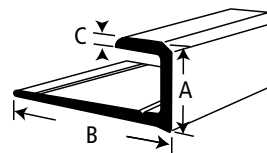


J-Finishing Aluminum Molding

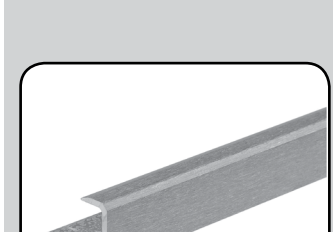
Sold by length

PRODUCT	FINISH	HEIGHT (A)	WIDTH (B)	THICKNESS (C)	LENGTH
MRB551VCH	Satin (10)	3/8"	7/8"	1/4"	12'
MRB251PH	Polished	1/4"	3/4"	13/64"	12'
MRB1851M*	Mill Finish (M)	3/8"	1"	5/8"	12'
MRB1851S*	Brushed Aluminum (S)	3/8"	7/8"	5/8"	12'
MRB851PH	Polished	3/8"	7/8"	3/8"	12'
MRB1851P*	Polished	3/8"	1"	5/8"	12'

* Undrilled



Richelieu Section 21A



- 1 SCREWS AND FASTENERS
- 2 FURNITURE EQUIPMENT
- 3 HINGES
- 4 SLIDES
- 5 CASTERS AND LEGS
- 6 KITCHEN SOLUTIONS
- 7 CLOSET SOLUTIONS
- 8 LIGHTING SOLUTIONS
- 9 SINKS AND FAUCETS
- 10 OFFICE
- 11 SLIDING DOORS
- 12 GLASS HARDWARE
- 13 PANELS AND SURFACES
- 14 EDGE-BANDING
- 15 CABINET DOORS AND DRAWERS
- 16 CORBELS AND FLOOR REGISTERS
- 17 GLUES, SILICONES, CAULK AND INSULATING
- 18 TOOLS AND SECURITY
- 19 FINISHING PRODUCTS AND SHOP SUPPLIES
- 20 COMMERCIAL DISPLAY HARDWARE
- 21 MOLDING, RAILING AND BATHROOM HARDWARE

CCRMUS 2017

Molding, Railing and Bathroom Hardware |

Aluminum Moldings

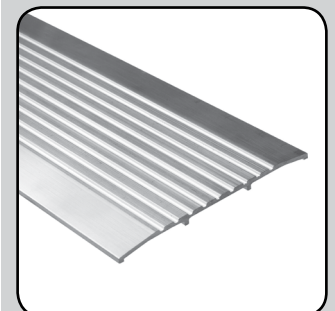
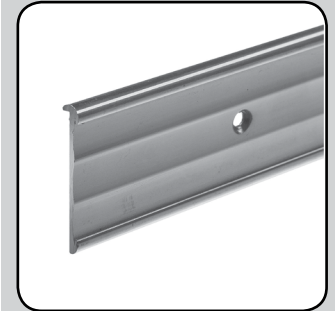
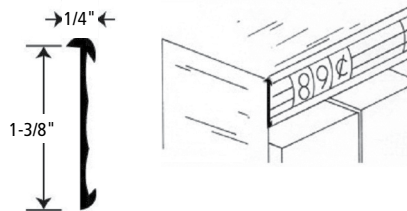
Richelieu Section 21A

1-1/4" Price Tag Aluminum Molding

- Moldings for 1-1/4" price tags, made with 6063 alloy
- With holes

Sold by length

PRODUCT	FINISH	HEIGHT	WIDTH	THICKNESS	LENGTH
MRBA154PH	Polished	1-3/8"	1-3/8"	1/4"	12'
MRBA154SH	Satin (10)	1-3/8"	1-3/8"	1/4"	12'



1-1/4" Price Tag Aluminum Molding

Sold by length

PRODUCT	FINISH	WIDTH	LENGTH
MRB618P	Polished	1-1/4"	12'

Aluminum Commercial Door Threshold

- Threshold door molding for floor

Sold by length

PRODUCT	FINISH	HEIGHT	WIDTH	LENGTH
D0582412D10	Mill Finish (M)	1/4"	4"	12'
D0582512D10	Mill Finish (M)	1/4"	5"	12'
D0582612D10	Mill Finish (M)	1/4"	6"	12'

Molding, Railing and Bathroom Hardware |

Aluminum Moldings

Aluminum Commercial Door Threshold

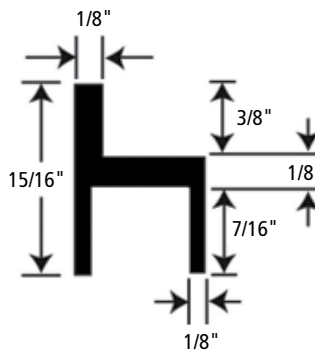
Sold by length

PRODUCT	FINISH	HEIGHT	WIDTH	LENGTH
D0583412D10	Mill Finish (M)	1/2"	4"	12'-1"
D0583512D10	Mill Finish (M)	1/2"	5"	12'-1"
D0583612D10	Mill Finish (M)	1/2"	6"	12'-1"

Velo Clear Hang File Extrusion

Sold by length

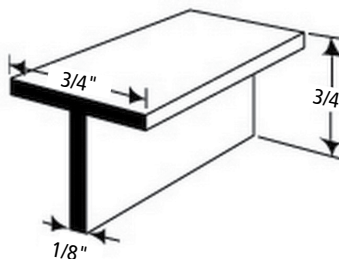
PRODUCT	FINISH	LENGTH
MRBNYM120VC	Satin (10)	12'



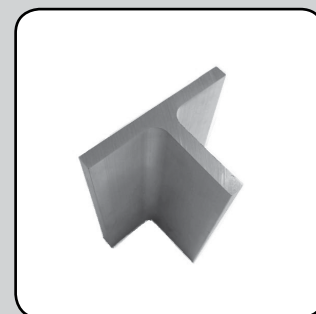
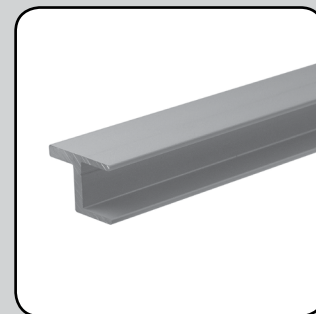
T-Rod Aluminum Molding

Sold by length

PRODUCT	FINISH	HEIGHT	WIDTH	THICKNESS	LENGTH
18301210	Satin (10)	3/4"	3/4"	1/8"	12'



Richelieu Section 21A



- 1 SCREWS AND FASTENERS
- 2 FURNITURE EQUIPMENT
- 3 HINGES
- 4 SLIDES
- 5 CASTERS AND LEGS
- 6 KITCHEN SOLUTIONS
- 7 CLOSET SOLUTIONS
- 8 LIGHTING SOLUTIONS
- 9 SINKS AND FAUCETS
- 10 OFFICE
- 11 SLIDING DOORS
- 12 GLASS HARDWARE
- 13 PANELS AND SURFACES
- 14 EDGE-BANDING
- 15 CABINET DOORS AND DRAWERS
- 16 CORBELS AND FLOOR REGISTERS
- 17 GLUES, SILICONES, CAULK AND INSULATING
- 18 TOOLS AND SECURITY
- 19 FINISHING PRODUCTS AND SHOP SUPPLIES
- 20 COMMERCIAL DISPLAY HARDWARE
- 21 MOLDING, RAILING AND BATHROOM HARDWARE

CCRMUS 2017

I Molding, Railing and Bathroom Hardware I

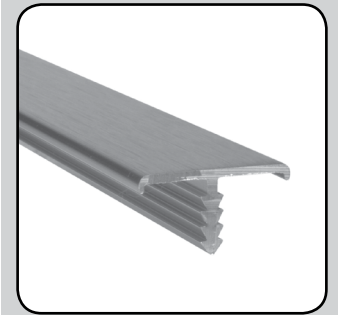
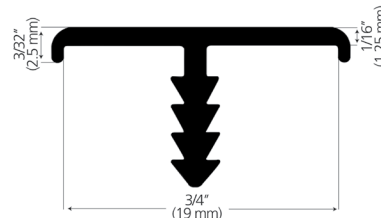
Aluminum Moldings

Richelieu Section 21A

T Edge Finishing Aluminum Molding

Sold by length

PRODUCT	FINISH	HEIGHT	WIDTH	DEPTH OF GROOVE	BARB THICKNESS	LENGTH
31941210	Satin (10)	15/32"	27/ 32"	13/32"	1/8"	12'
319412140	Chrome (140)	15/32"	27/ 32"	13/32"	1/8"	12'
319412170	Stainless Steel (170)	15/32"	27/ 32"	13/32"	1/8"	12'

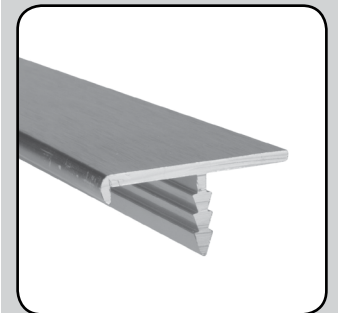
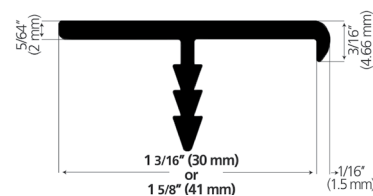


T Edge Finishing Aluminum Molding

- T-shaped aluminum edge profile for 1-3/16" panels
- The perfect protection for counter edges

Sold by length

PRODUCT	FINISH	HEIGHT	WIDTH	THICKNESS	DEPTH OF GROOVE	BARB THICKNESS	LENGTH
31951210	Satin (10)	1/4"	1-1/4"	3/32"	1/2"	1/8"	12'
319512170	Stainless Steel (170)	1/4"	1-1/4"	3/32"	1/2"	1/8"	12'



Molding, Railing and Bathroom Hardware |

Aluminum Moldings

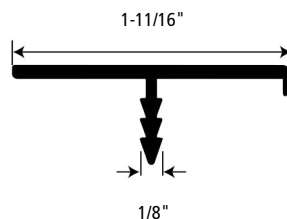
Richelieu Section 21A

T Edge Finishing Aluminum Molding

- T-shaped aluminum edge profile for 1-5/8" panels
- Protection for counter edges

Sold by length

PRODUCT	FINISH	HEIGHT	WIDTH	THICKNESS	DEPTH OF GROOVE	BARB THICKNESS	LENGTH
31961210	Satin (10)	1-11/16"	3/32"	3/32"	1/2"	1/8"	12'
319612170	Stainless Steel (170)	1-11/16"	3/32"	3/32"	1/2"	1/8"	12'

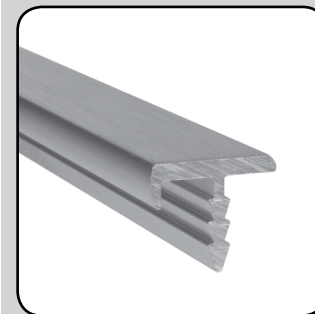
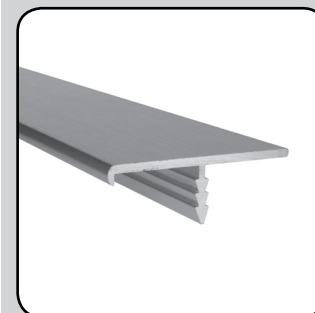
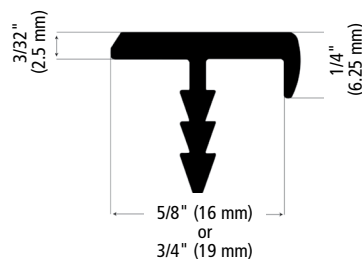


T Edge Finishing Aluminum Molding

- T-shaped aluminum edge profile for 5/8" panel
- Superior protection for panel edges

Sold by length

PRODUCT	FINISH	HEIGHT	WIDTH	THICKNESS	DEPTH OF GROOVE	BARB THICKNESS	LENGTH
32921210	Satin (10)	5/8"	23/32"	3/32"	1/2"	1/8"	12'
329212170	Stainless Steel (170)	5/8"	23/32"	3/32"	1/2"	1/8"	12'



- 1 SCREWS AND FASTENERS
- 2 FURNITURE EQUIPMENT
- 3 HINGES
- 4 SLIDES
- 5 CASTERS AND LEGS
- 6 KITCHEN SOLUTIONS
- 7 CLOSET SOLUTIONS
- 8 LIGHTING SOLUTIONS
- 9 SINKS AND FAUCETS
- 10 OFFICE
- 11 SLIDING DOORS
- 12 GLASS HARDWARE
- 13 PANELS AND SURFACES
- 14 EDGE-BANDING
- 15 CABINET DOORS AND DRAWERS
- 16 CORBELS AND FLOOR REGISTERS
- 17 GLUES, SILICONES, CAULK AND INSULATING
- 18 TOOLS AND SECURITY
- 19 FINISHING PRODUCTS AND SHOP SUPPLIES
- 20 COMMERCIAL DISPLAY HARDWARE
- 21 MOLDING, RAILING AND BATHROOM HARDWARE

I Molding, Railing and Bathroom Hardware I

Aluminum Moldings

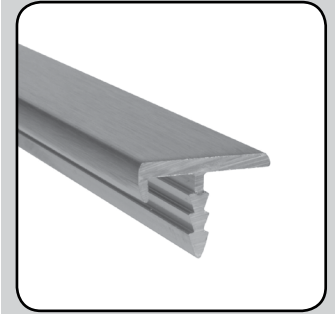
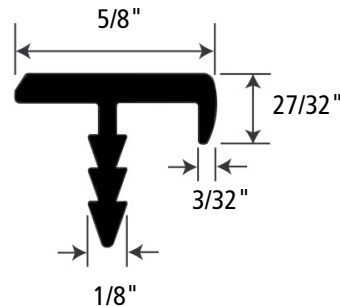
Richelieu Section 21A

T Edge Finishing Aluminum Molding

- T-shaped molding for 3/4" panels
- Easy to install
- Gives perfect edge protection

Sold by length

PRODUCT	FINISH	HEIGHT	WIDTH	THICKNESS	DEPTH OF GROOVE	BARB THICKNESS	LENGTH
31931210	Satin (10)	5/8"	27/32"	3/32"	1/2"	1/8"	12'
319312170	Stainless Steel (170)	5/8"	27/32"	3/32"	1/2"	1/8"	12'

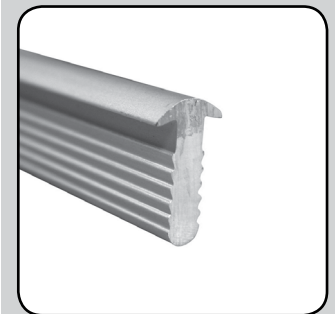


T-Finishing Molding

Application: This molding allows you to protect solid surfaces when used as a trivet. It can also be used for finishing doors, front counter tops and wall panels.

Sold by length

PRODUCT	FINISH	HEIGHT	WIDTH	THICKNESS	PANEL THICKNESS	DEPTH OF GROOVE	BARB THICKNESS	LENGTH
54311210	Satin (10)	19/32"	5/16"	3/32"	5/8"	15/32"	5/32"	12'
54310810	Satin (10)	19/32"	5/16"	3/32"	5/8"	15/32"	5/32"	8'



Molding, Railing and Bathroom Hardware |

Aluminum Moldings

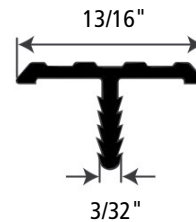
T-Finishing Molding

- T-shaped molding for 3/4" panels
- Easy to install

Application: Ideal for tables or counter contours where two combined moldings are used.

Sold by length

PRODUCT	FINISH	HEIGHT	WIDTH	THICKNESS	PANEL THICKNESS	DEPTH OF GROOVE	BARB THICKNESS	LENGTH
54821210	Satin (10)	15/32"	13/16"	3/32"	3/4"	3/8"	3/32"	12'
548212140	Chrome (140)	15/32"	13/16"	3/32"	3/4"	3/8"	3/32"	12'

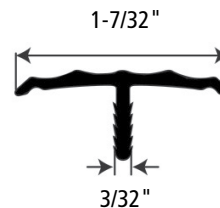


T-Finishing Aluminum Molding

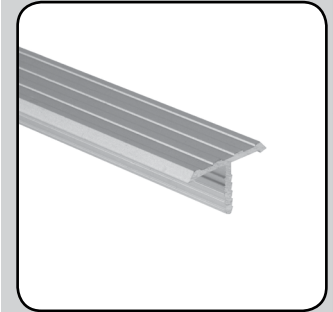
- Easy-to-install, T-shaped finishing molding for panels from 1" to 1-3/16". Requires groove for notched center rod. This molding is ideal for table or counter contours

Sold by length

PRODUCT	FINISH	HEIGHT	WIDTH	THICKNESS	DEPTH OF GROOVE	BARB THICKNESS	LENGTH
54841210	Satin (10)	1/2"	1-7/32"	3/32"	11/32"	3/32"	12'
548412140	Chrome (140)	1/2"	1-7/32"	3/32"	11/32"	3/32"	12'



Richelieu Section 21A



- 1 SCREWS AND FASTENERS
- 2 FURNITURE EQUIPMENT
- 3 HINGES
- 4 SLIDES
- 5 CASTERS AND LEGS
- 6 KITCHEN SOLUTIONS
- 7 CLOSET SOLUTIONS
- 8 LIGHTING SOLUTIONS
- 9 SINKS AND FAUCETS
- 10 OFFICE
- 11 SLIDING DOORS
- 12 GLASS HARDWARE
- 13 PANELS AND SURFACES
- 14 EDGE-BANDING
- 15 CABINET DOORS AND DRAWERS
- 16 CORBELS AND FLOOR REGISTERS
- 17 GLUES, SILICONES, CAULK AND INSULATING
- 18 TOOLS AND SECURITY
- 19 FINISHING PRODUCTS AND SHOP SUPPLIES
- 20 COMMERCIAL DISPLAY HARDWARE
- 21 MOLDING, RAILING AND BATHROOM HARDWARE

Molding, Railing and Bathroom Hardware |

Aluminum Moldings

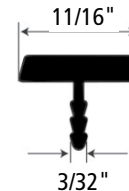
Richelieu Section 21A

T-Finishing Aluminum Molding

- T-shaped molding for 5/8" panels

Sold by length

PRODUCT	FINISH	HEIGHT	WIDTH	THICKNESS	DEPTH OF GROOVE	BARB THICKNESS	LENGTH
31621210	Satin (10)	17/32"	11/16"	1/8"	3/8"	3/32"	12'
31620810	Satin (10)	17/32"	11/16"	1/8"	3/8"	3/32"	8'

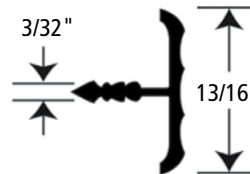


T-Finishing Aluminum Molding

- T-shaped molding for 3/4" panels

Sold by length

PRODUCT	FINISH	WIDTH	BARB THICKNESS	LENGTH
MRB1029NS	Brushed Aluminum (S)	13/16"	3/32"	12'

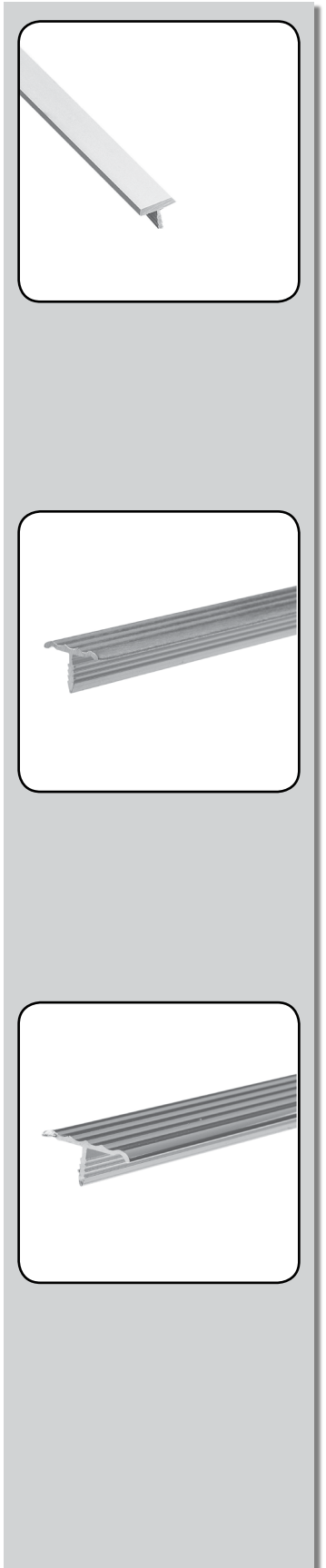
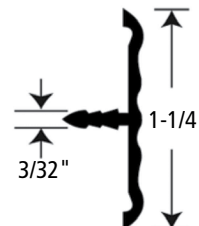


T-Finishing Aluminum Molding

- T-shaped molding for 1-1/4" panels

Sold by length

PRODUCT	FINISH	HEIGHT	WIDTH	BARB THICKNESS	LENGTH
MRB968NVC	Satin (10)	1/2"	1-1/4"	3/32"	12'
MRB968NS	Brushed Aluminum (S)	1/2"	1-1/4"	3/32"	12'
MRB968NBC	Chrome (140)	1/2"	1-1/4"	3/32"	12'



Molding, Railing and Bathroom Hardware |

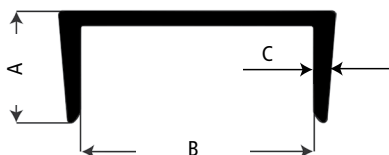
Aluminum Moldings

U-Shaped Edge Finishing Aluminum Molding

- Protective molding for covering the edge of a door or the front of a shelf. The molding is tapered so that it fits tightly against your material and stays in place
- Easy to install with a rubber mallet

Sold by length

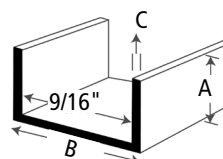
PRODUCT	FINISH	HEIGHT (A)	WIDTH (B)	THICKNESS (C)	PANEL THICKNESS	LENGTH
31971210	Satin (10)	11/32"	7/8"	1/16"	3/4"	12'
319712170	Stainless Steel (170)	11/32"	7/8"	1/16"	3/4"	12'
31981210	Satin (10)	11/32"	3/4"	1/16"	5/8"	12'
319812170	Stainless Steel (170)	11/32"	3/4"	1/16"	5/8"	12'



9/16" U-Shaped Aluminum Molding

Sold by length

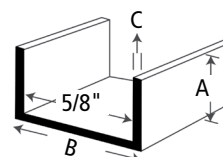
PRODUCT	FINISH	HEIGHT (A)	WIDTH (B)	THICKNESS (C)	INTERIOR MEASUREMENTS	LENGTH
D016331210	Satin (10)	3/4"	3/4"	3/32"	9/16"	12'
D0163312140	Chrome (140)	3/4"	3/4"	3/32"	9/16"	12'
D016330810	Satin (10)	3/4"	3/4"	3/32"	9/16"	8'



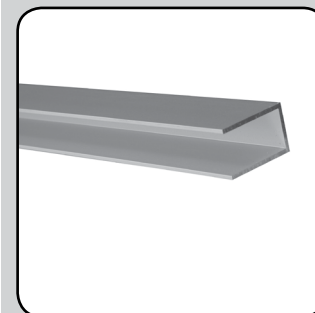
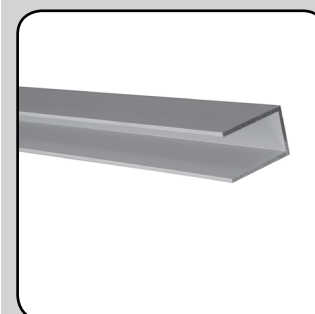
5/8" U-Shaped Aluminum Molding

Sold by length

PRODUCT	FINISH	HEIGHT (A)	WIDTH (B)	THICKNESS (C)	INTERIOR MEASUREMENTS	LENGTH
D016171210	Satin (10)	5/8"	3/4"	1/16"	5/8"	12'
D0161712140	Chrome (140)	5/8"	3/4"	1/16"	5/8"	12'
D016170810	Satin (10)	5/8"	3/4"	1/16"	5/8"	8'
MRBNYM134M	Mill Finish (M)	3/4"	3/4"	1/16"	5/8"	12'



Richelieu Section 21A



- 1 SCREWS AND FASTENERS
- 2 FURNITURE EQUIPMENT
- 3 HINGES
- 4 SLIDES
- 5 CASTERS AND LEGS
- 6 KITCHEN SOLUTIONS
- 7 CLOSET SOLUTIONS
- 8 LIGHTING SOLUTIONS
- 9 SINKS AND FAUCETS
- 10 OFFICE
- 11 SLIDING DOORS
- 12 GLASS HARDWARE
- 13 PANELS AND SURFACES
- 14 EDGE-BANDING
- 15 CABINET DOORS AND DRAWERS
- 16 CORBELS AND FLOOR REGISTERS
- 17 GLUES, SILICONES, CAULK AND INSULATING
- 18 TOOLS AND SECURITY
- 19 FINISHING PRODUCTS AND SHOP SUPPLIES
- 20 COMMERCIAL DISPLAY HARDWARE
- 21 MOLDING, RAILING AND BATHROOM HARDWARE

I Molding, Railing and Bathroom Hardware I

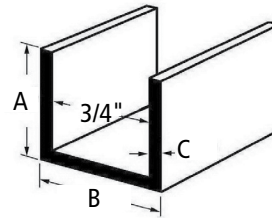
Aluminum Moldings

Richelieu Section 21A

3/4" U-Shaped Aluminum Molding

Sold by length

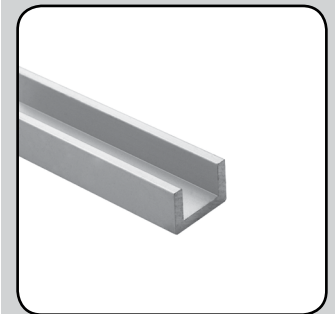
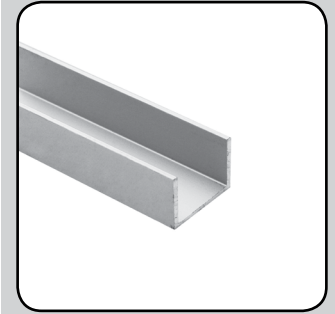
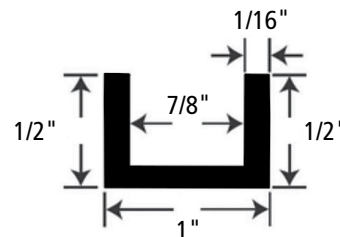
PRODUCT	FINISH	HEIGHT (A)	WIDTH (B)	THICKNESS (C)	INTERIOR MEASUREMENTS	LENGTH
D010084	Chrome (140)	5/8"	7/8"	1/16"	3/4"	12'
D010085	Satin (10)	5/8"	7/8"	1/16"	3/4"	12'
D010083	Gold (130)	5/8"	7/8"	1/16"	3/4"	12'
D016381210	Satin (10)	1/2"	1"	1/8"	3/4"	12'
D0163812140	Chrome (140)	1/2"	1"	1/8"	3/4"	12'
D0100850810	Satin (10)	5/8"	7/8"	1/16"	3/4"	8'
MRB947M	Mill Finish (M)	3/4"	7/8"	1/16"	3/4"	12'
MRBNYM109M	Mill Finish (M)	1"	1"	1/8"	3/4"	12'
MRBNYM109VC	Satin (10)	1"	1"	1/8"	3/4"	12'
MRB247S	Brushed	1/2"	1"	1/8"	3/4"	12'
MRB447M	Mill Finish (M)	1/2"	27/32"	3/64"	3/4"	12'
MRBNYM109S	Brushed	1"	1"	1/8"	3/4"	12'



7/8" U-Shaped Aluminum Molding

Sold by length

PRODUCT	FINISH	HEIGHT	WIDTH	THICKNESS	INTERIOR MEASUREMENTS	LENGTH
MRBNYM148M	Mill Finish (M)	1/2"	1"	1/16"	7/8"	12'



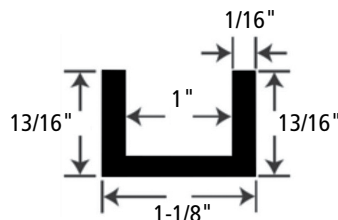
Molding, Railing and Bathroom Hardware |

Aluminum Moldings

1" U-Shaped Aluminum Molding

Sold by length

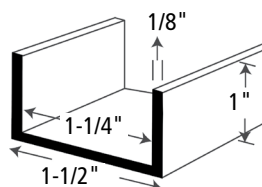
PRODUCT	FINISH	HEIGHT	WIDTH	THICKNESS	INTERIOR MEASUREMENTS	LENGTH
MRB448M	Mill Finish (M)	13/16"	1-1/8"	1/16"	1"	12'
MRB448S	Brushed	13/16"	1-1/8"	1/16"	1"	12'



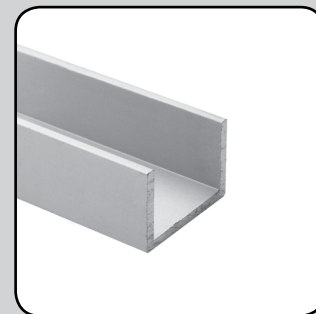
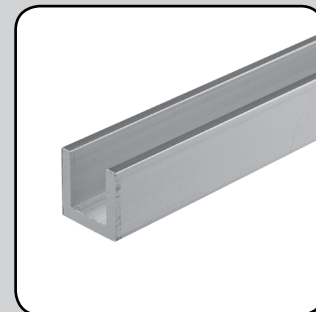
1-1/4" U-Shaped Aluminum Molding

Sold by length

PRODUCT	FINISH	HEIGHT	WIDTH	THICKNESS	INTERIOR MEASUREMENTS	LENGTH
D016441210	Satin (10)	1"	1-1/2"	1/8"	1-1/4"	12'
D0164412140	Chrome (140)	1"	1-1/2"	1/8"	1-1/4"	12'
D016440810	Satin (10)	1"	1-1/2"	1/8"	1-1/4"	8'



Richelieu Section 21A



- 1 SCREWS AND FASTENERS
- 2 FURNITURE EQUIPMENT
- 3 HINGES
- 4 SLIDES
- 5 CASTERS AND LEGS
- 6 KITCHEN SOLUTIONS
- 7 CLOSET SOLUTIONS
- 8 LIGHTING SOLUTIONS
- 9 SINKS AND FAUCETS
- 10 OFFICE
- 11 SLIDING DOORS
- 12 GLASS HARDWARE
- 13 PANELS AND SURFACES
- 14 EDGE-BANDING
- 15 CABINET DOORS AND DRAWERS
- 16 CORBELS AND FLOOR REGISTERS
- 17 GLUES, SILICONES, CAULK AND INSULATING
- 18 TOOLS AND SECURITY
- 19 FINISHING PRODUCTS AND SHOP SUPPLIES
- 20 COMMERCIAL DISPLAY HARDWARE
- 21 MOLDING, RAILING AND BATHROOM HARDWARE

NOTES

I Molding, Railing and Bathroom Hardware I

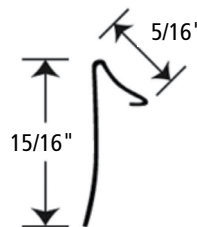
Stainless Steel Moldings

Stainless Steel Finishing Molding

- This molding can be used for a counter top backsplash or a 90 degree inside corner

Sold by length

PRODUCT	FINISH	HEIGHT	WIDTH	LENGTH
MRBSS799B	Polished	15/16"	5/16"	12'

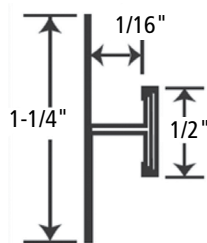


Stainless Steel Separation Bar

- Separation bar designed for materials 1/16"

Sold by length

PRODUCT	FINISH	LENGTH
MRBSS1450B	Polished	12'
MRBSS1450B8	Polished	8'

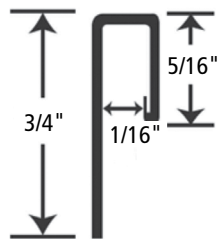


Stainless Steel J-Trim Finishing Molding

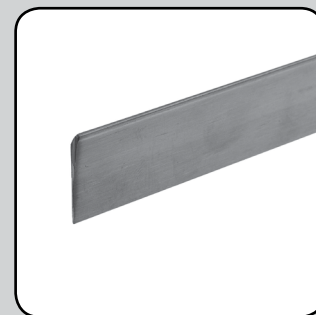
- J-Molding for materials 1/16"

Sold by length

PRODUCT	FINISH	LENGTH
MRBSS1451B8	Polished	8'
MRBSS1451B	Polished	12'



Richelieu Section 21B



1	SCREWS AND FASTENERS
2	FURNITURE EQUIPMENT
3	HINGES
4	SLIDES
5	CASTERS AND LEGS
6	KITCHEN SOLUTIONS
7	CLOSET SOLUTIONS
8	LIGHTING SOLUTIONS
9	SINKS AND FAUCETS
10	OFFICE
11	SLIDING DOORS
12	GLASS HARDWARE
13	PANELS AND SURFACES
14	EDGE-BANDING
15	CABINET DOORS AND DRAWERS
16	CORBELS AND FLOOR REGISTERS
17	GLUES, SILICONES, CAULK AND INSULATING
18	TOOLS AND SECURITY
19	FINISHING PRODUCTS AND SHOP SUPPLIES
20	COMMERCIAL DISPLAY HARDWARE
21	MOLDING, RAILING AND BATHROOM HARDWARE

CCRMUS 2017

I Molding, Railing and Bathroom Hardware I

Stainless Steel Moldings

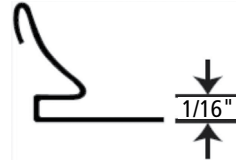
Richelieu Section 21B

Stainless Steel Finishing Molding for Inside Corner

- Inside corner molding for 1/16" coating. Use as a cove or an inside corner molding. Used with metal or laminate sheets where a corner or seam needs to be concealed

Sold by length

PRODUCT	FINISH	THICKNESS	LENGTH
MRBSS1442B	Polished	1/16"	12'

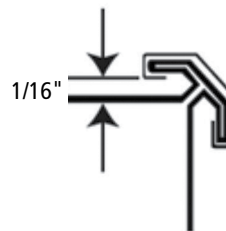


Stainless Steel Outside Corner Finishing Molding

- Outside corner trim finish for materials 1/16"

Sold by length

PRODUCT	FINISH	THICKNESS	LENGTH
MRBSS1452B	Polished	1/16"	12'

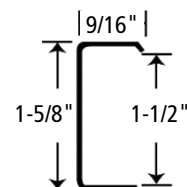


Stainless Steel Snap-On Molding

- Snap-on countertop moulding fits on the front of a countertop or shelf for a clean finished look

Sold by length

PRODUCT	FINISH	HEIGHT	WIDTH	LENGTH
MRBSS806B	Polished	1-5/8"	9/16"	12'



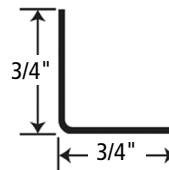
Molding, Railing and Bathroom Hardware |

Stainless Steel Moldings

Stainless Steel Angle

Sold by length

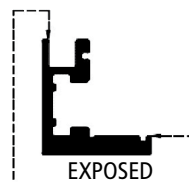
PRODUCT	FINISH	HEIGHT	WIDTH	THICKNESS	LENGTH
MRBSS369B	Polished	3/4"	3/4"	1/16"	12'



Door Frame Aluminum Molding

Sold by length

PRODUCT	FINISH	HEIGHT	WIDTH	LENGTH
35041210	Satin (10)	29/32"	13/16"	12'

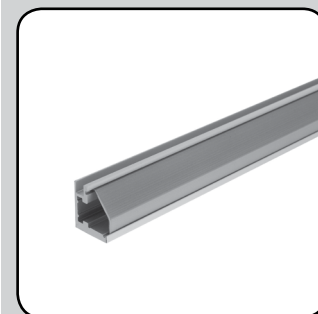
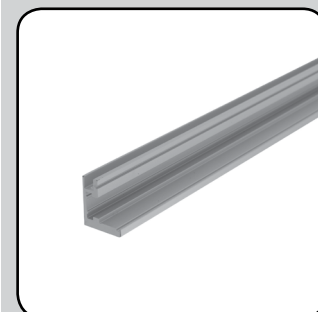
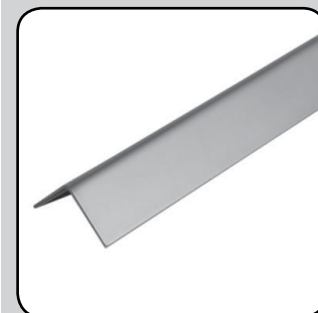


3/4" Silver Glass Aluminum Molding

Sold by length

PRODUCT	LENGTH
10034100	12'

Richelieu Section 21B



- 1 SCREWS AND FASTENERS
- 2 FURNITURE EQUIPMENT
- 3 HINGES
- 4 SLIDES
- 5 CASTERS AND LEGS
- 6 KITCHEN SOLUTIONS
- 7 CLOSET SOLUTIONS
- 8 LIGHTING SOLUTIONS
- 9 SINKS AND FAUCETS
- 10 OFFICE
- 11 SLIDING DOORS
- 12 GLASS HARDWARE
- 13 PANELS AND SURFACES
- 14 EDGE-BANDING
- 15 CABINET DOORS AND DRAWERS
- 16 CORBELS AND FLOOR REGISTERS
- 17 GLUES, SILICONES, CAULK AND INSULATING
- 18 TOOLS AND SECURITY
- 19 FINISHING PRODUCTS AND SHOP SUPPLIES
- 20 COMMERCIAL DISPLAY HARDWARE
- 21 MOLDING, RAILING AND BATHROOM HARDWARE

CCRMUS 2017

NOTES

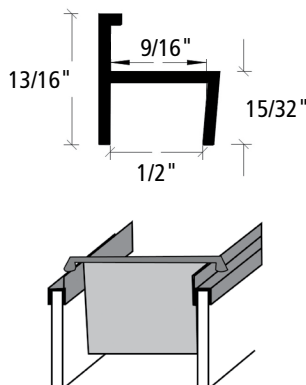
Molding, Railing and Bathroom Hardware |

Functional Moldings

Plastic File Holder Molding

Sold by length

PRODUCT	FINISH	WIDTH	LENGTH
124230	White	1/2"	8'
124290	Black	1/2"	8'
141230	White	5/8"	8'
141290	Black	5/8"	8'
58890	Black	5/8"	8'



PVC Drawer Molding Support

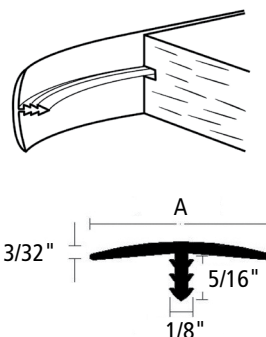
Sold by length

PRODUCT	FINISH	WIDTH	LENGTH
1371890	Black	1/2"	8'

Flexible PVC T-Molding

Sold by roll

PRODUCT	FINISH	WIDTH (A)	LENGTH
114125105	Light Gray	1-1/4"	125 linear foot
11412530	White	1-1/4"	125 linear foot
11412590	Black	1-1/4"	125 linear foot
34125105	Light Gray	3/4"	175 linear foot
3412530	White	3/4"	175 linear foot
3412560	Brown	3/4"	175 linear foot
3412590	Black	3/4"	175 linear foot
58125105	Light Gray	5/8"	175 linear foot
5812530	White	5/8"	175 linear foot
5812590	Black	5/8"	175 linear foot

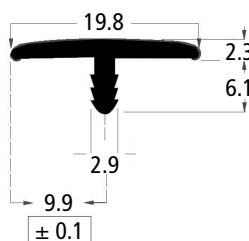


Aluminum PVC T-Molding

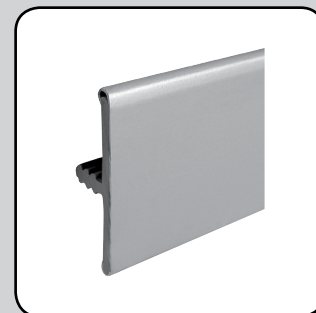
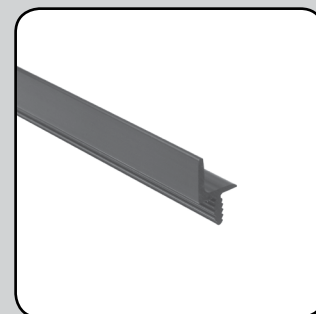
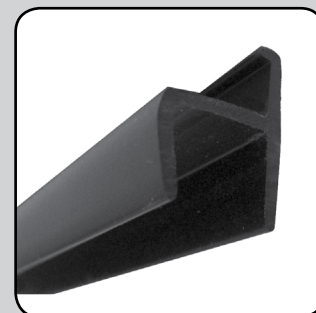
- Rigid PVC covered with anodized aluminum sheet

Sold by length

PRODUCT	WIDTH	LENGTH
88816510	5/8"	8'



Richelieu Section 21C



CCRMUS 2017

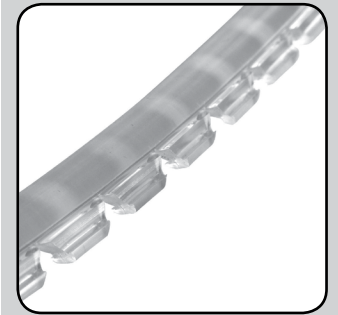
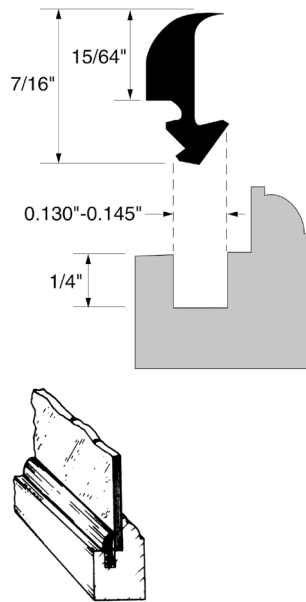
Page 21C1

Glass Door Retainer Molding

- Made of flexible vinyl. Supplied in continuous rolls. May be mitered with standard tools
- Cuts easily with knife or shears
- No nails or touch-ups required
- Holds and cushions glass panel; eliminates rattling

Sold by roll

PRODUCT	FINISH	LENGTH
1001711	Clear	500 linear foot
1001760	Dark Brown	500 linear foot
1021511	Clear	1000 linear foot
1021534	Off White	1000 linear foot
1021560	Dark Brown	1000 linear foot
1021590	Black	1000 linear foot
1021500	Fruitwood	1000 linear foot





Molding, Railing and Bathroom Hardware | Tubular Hardware

Tubing

- Ideal for handrails, footrails, curtain rods, etc
- Each unit covered with a protective coating


Sold by length

	PRODUCT	FINISH	Ø	MATERIAL	LENGTH
	01106130	Brass	1-1/2"	Solid Brass	6'
	01108130		1-1/2"	Solid Brass	8'
	01206130		2"	Solid Brass	6'
	01208130		2"	Solid Brass	8'
	01106170	Brushed Stainless Steel	1-1/2"	Stainless Steel	6'
	01108170		1-1/2"	Stainless Steel	8'
	01208170		2"	Stainless Steel	8'

Standard Handrail Brackets

- Fittings are supplied with self-drilling, self-tapping hardware
- Mount brackets to stud in wall
- Maximum spacing between brackets is 4 feet
- Material: Solid Brass
- Finish: Brass (except 301112170 and 3012170 - Brushed Stainless Steel)



Sold by unit

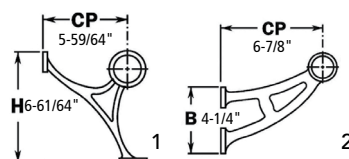
	PRODUCT	DESCRIPTION	APPLICATION	WIDTH	HEIGHT
	301112130	Standard Handrail Bracket	For 1-1/2" Diameter Tubes	2-1/2"	2-1/2"
	301112170		For 1-1/2" Diameter Tubes	2-1/2"	2-1/2"
	3012130		For 2" Diameter Tubes	2-1/2"	2-1/2"
	3012170		For 2" Diameter Tubes	2-1/2"	2-1/2"

Combination Brackets

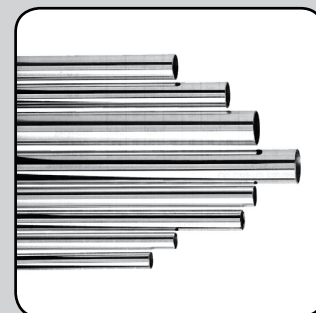
- Fittings are supplied with self-drilling, self-tapping hardware
- Maximum spacing between brackets is 4 feet
- Material: Solid Brass and Stainless Steel*
- Finish: Brass and Brushed Stainless Steel*

Sold by unit

	PRODUCT	DESCRIPTION	APPLICATION	WIDTH	HEIGHT
	400112130	Combination Bracket	For 1-1/2" Diameter Tubes	6-1/4"	6-7/32"
	400112170*		For 1-1/2" Diameter Tubes	6-7/16"	6-5/8"
	4002130		For 2" Diameter Tubes	5-29/32"	6-30/32"
	4002170*		For 2" Diameter Tubes	6-1/8"	7-1/32"
	402112130	Bar Mount Bracket	For 1-1/2" Diameter Tubes	6-1/16"	3-7/8"
	402112170*		For 1-1/2" Diameter Tubes	6-1/16"	3-7/8"
	4022130		For 2" Diameter Tubes	6-7/8"	4-1/4"
	4022170*		For 2" Diameter Tubes	6-7/8"	4-1/4"



Richelieu Section 21D






- 1
SCREWS
AND
FASTENERS
- 2
FURNITURE
EQUIPMENT
- 3
HINGES
- 4
SLIDES
- 5
CASTERS
AND LEGS
- 6
KITCHEN
SOLUTIONS
- 7
CLOSET
SOLUTIONS
- 8
LIGHTING
SOLUTIONS
- 9
SINKS
AND
FAUCETS
- 10
OFFICE
- 11
SLIDING
DOORS
- 12
GLASS
HARDWARE
- 13
PANELS
AND
SURFACES
- 14
EDGE-
BANDING
- 15
CABINET
DOORS
AND
DRAWERS
- 16
CORBELS
AND FLOOR
REGISTERS
- 17
GLUES,
SILICONES,
CAULK AND
INSULATING
- 18
TOOLS
AND
SECURITY
- 19
FINISHING
PRODUCTS
AND SHOP
SUPPLIES
- 20
COMMERCIAL
DISPLAY
HARDWARE
- 21
MOLDING,
RAILING AND
BATHROOM
HARDWARE

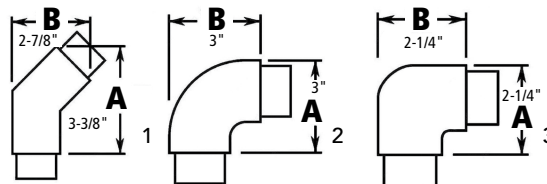
Flush Radius Elbows

Get a streamlined look with flush handrail fittings. These components ensure simple assembly and enough flexibility to suit any project. Our line of flush handrail fittings features a 1" sleeve the longest in the industry for added strength and adhesive coverage. Note: Handrail fittings come with self-drilling/self-tapping hardware.

- Material: Solid Brass and Stainless Steel*
- Finish: Solid Brass and Brushed Stainless Steel

Sold by unit



	PRODUCT	DESCRIPTION	APPLICATION	HEIGHT (A)	WIDTH (B)
 1	730112130	135° Flush Elbow	For 1-1/2" Diameter Tubes	3"	2-15/16"
	730112170*		For 1-1/2" Diameter Tubes	3"	2-15/16"
	7302130		For 2" Diameter Tubes	3-3/8"	2-7/8"
 2	731112130	90° Flush Radius Elbow	For 1-1/2" Diameter Tubes	2-7/8"	2-7/8"
	7312130		For 2" Diameter Tubes	3"	3"
 3	732112130	90° Flush Elbow	For 1-1/2" Diameter Tubes	2-1/4"	2-1/4"
	732112170*		For 1-1/2" Diameter Tubes	2-1/4"	2-1/4"
	7322170		For 2" Diameter Tubes	2-1/2"	2-1/2"

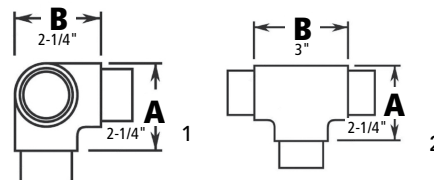


Outlet Tee

- Handrail fittings come with self-drilling/self-tapping hardware
- Material: Solid Brass and Stainless Steel*
- Finish: Brass and Brushed Stainless Steel*

Sold by unit

	PRODUCT	DESCRIPTION	APPLICATION	HEIGHT (A)	WIDTH (B)
 1	733112130	Flush Side Outlet Elbow	For 1-1/2" Diameter Tubes	2 1/4"	2 1/4"
 2	734112130	Flush Tee	For 1-1/2" Diameter Tubes	2 1/4"	3"
	734112170*		For 1-1/2" Diameter Tubes	2 1/4"	3"









Molding, Railing and Bathroom Hardware | Tubular Hardware

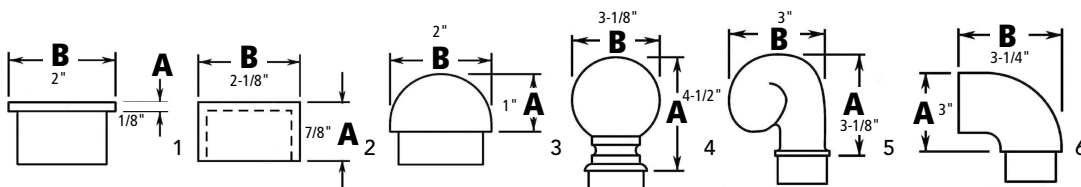
Finials

Features a variety of decorative and functional rail end caps and finials to complete your railing project. Our end caps and finials are designed to provide a beautiful finishing touch.

- Fittings come with self-drilling/self-tapping hardware
- Material: Solid Brass and Stainless Steel*
- Finish: Brass and Brushed Stainless Steel*

Sold by unit



	PRODUCT	DESCRIPTION	APPLICATION	HEIGHT (A)	WIDTH (B)
	048112130	Flush End Cap	For 1-1/2" Diameter Tubes	1/8"	1-1/2"
	048112170*		For 1-1/2" Diameter Tubes	1/8"	1-1/2"
	0482130		For 2" Diameter Tubes	1/8"	2"
	600112130	Flush End Cap for Wood Rail	For 1-1/2" Diameter Tubes	7/8"	1-5/8"
	6002130		For 2" Diameter Tubes	7/8"	2-1/8"
	602112130	Half-Ball End Cap	For 1-1/2" Diameter Tubes	3/4"	1-1/2"
	602112170*		For 1-1/2" Diameter Tubes	3/4"	1-1/2"
	6022130		For 2" Diameter Tubes	1"	2"
	604112130	Ball Finial	For 1-1/2" Diameter Tubes	3-1/4"	2-3/8"
	604112170*		For 1-1/2" Diameter Tubes	3-1/4"	2-3/8"
	6042130		For 2" Diameter Tubes	4-1/2"	3-1/8"
	606112130	Scroll Finial	For 1-1/2" Diameter Tubes	2-7/8"	2-3/4"
	6062130		For 2" Diameter Tubes	3-1/8"	3"
	608112130	Radius Wall Return	For 1-1/2" Diameter Tubes	2-3/4"	3"
	608112170		For 1-1/2" Diameter Tubes	2-3/4"	3"
	6082130		For 2" Diameter Tubes	3"	3-1/4"

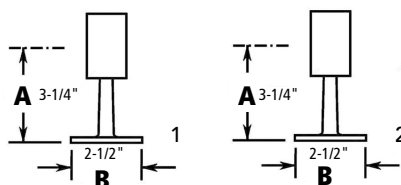


Flush and Ball Posts

- Fittings are supplied with self-drilling, self-tapping hardware. – Mount brackets to stud in wall. – Maximum spacing between brackets is 4 feet
- Material: Solid Brass and Stainless Steel*
- Finish: Brass and Brushed Stainless Steel*

Sold by unit

	PRODUCT	DESCRIPTION	APPLICATION	HEIGHT (A)	WIDTH (B)
	340112130	Flush End Post	For 1-1/2" Diameter Tubes	2-7/16"	2-5/16"
	3402130		For 2" Diameter Tubes	3-1/4"	2-1/2"
	340112170	Brushed	For 1-1/2" Diameter Tubes	2-7/16"	2-5/16"
	342112130	Flush Center Post	For 1-1/2" Diameter Tubes	2-7/16"	2-5/16"
	342112170*		For 1-1/2" Diameter Tubes	2-7/16"	2-5/16"
	3422130		For 2" Diameter Tubes	3-1/4"	2-1/2"



Richelieu Section 21D



CCRMUS 2017

I Molding, Railing and Bathroom Hardware I

Tubular Hardware



Richelieu Section 21D

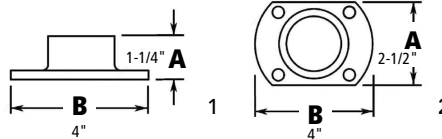
Wall Flanges

Flanges provide numerous mounting solutions for railing projects including wall mounting handrails, floor mounting footrails, as well as angle, adjustable, socket, square, cut and cubicle mounting for special architectural railing projects.

- Material: Solid Brass and Stainless Steel*
- Finish: Brass and Brushed Stainless Steel*

Sold by unit


	PRODUCT	DESCRIPTION	APPLICATION	HEIGHT (A)	WIDTH (B)
	510112130	Wall Flange	For 1-1/2" Diameter Tubes	1-1/16"	3"
	510112170*		For 1-1/2" Diameter Tubes	1-1/16"	3"
	5302130		For 2" Diameter Tubes	1-1/4"	4"
	5302170*		For 2" Diameter Tubes	1-1/4"	4"
	511112130	Cut Wall Flange	For 1-1/2" Diameter Tubes	2"	3"
	5312130		For 2" Diameter Tubes	2-1/2"	4"

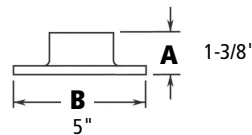


Floor Flanges

- Material: Solid Brass and Stainless Steel*
- Finish: Brass and Brushed Stainless Steel*

Sold by unit

	PRODUCT	DESCRIPTION	APPLICATION	HEIGHT (A)	WIDTH (B)
	532112130	Floor Flange	For 1-1/2" Diameter Tubes	1-3/8"	5"
	5322130		For 2" Diameter Tubes	1 -3/8"	5"

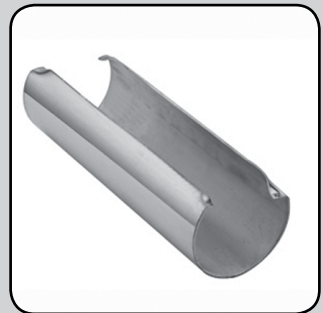


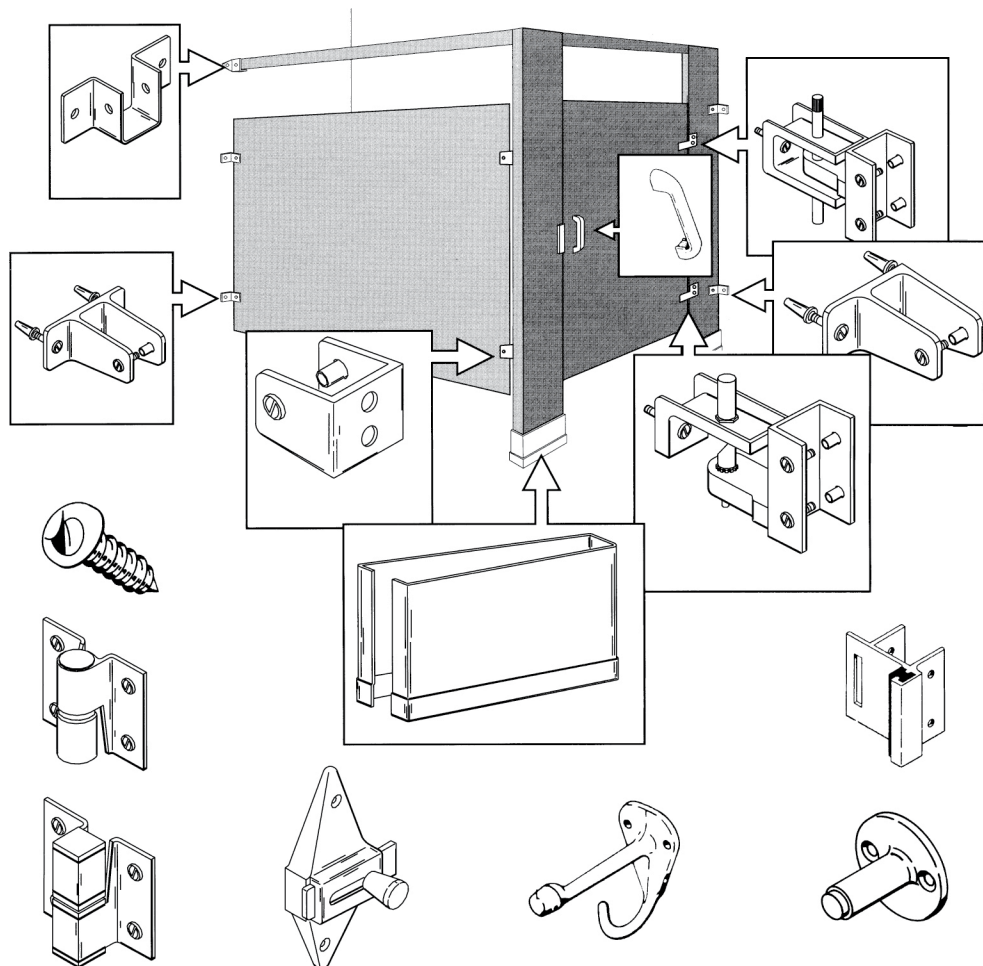
Steel Sleeve

- Material: Brass
- Finish: Brass

Sold by unit

PRODUCT	APPLICATION
830112130	For 1-1/2" diameter tube
8302130	For 2" diameter tube





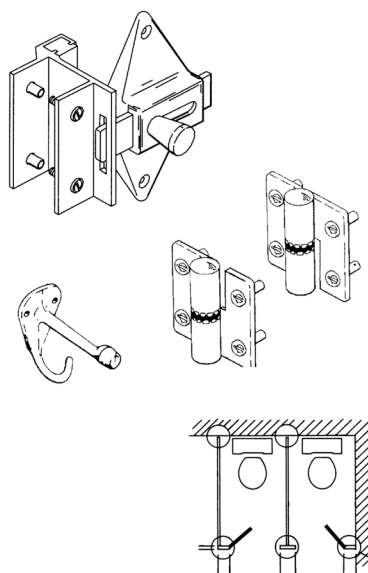
Surface Hinge Kit for Inswing Door

Products included in kit:

- Surface hinges
- Strike keeper
- Surface latch
- All screws required for door installation
- Hook-bumper combination

Sold by kit

PRODUCT	DOOR THICKNESS	PILASTER THICKNESS	DOOR SIDE
201000140	7/8"	1-1/4"	Left
201100140	7/8"	1-1/4"	Right
204500140	3/4"	3/4"	Left
204600140	3/4"	3/4"	Right



1	SCREWS AND FASTENERS
2	FURNITURE EQUIPMENT
3	HINGES
4	SLIDES
5	CASTERS AND LEGS
6	KITCHEN SOLUTIONS
7	CLOSET SOLUTIONS
8	LIGHTING SOLUTIONS
9	SINKS AND FAUCETS
10	OFFICE
11	SLIDING DOORS
12	GLASS HARDWARE
13	PANELS AND SURFACES
14	EDGE-BANDING
15	CABINET DOORS AND DRAWERS
16	CORBELS AND FLOOR REGISTERS
17	GLUES, SILICONES, CAULK AND INSULATING
18	TOOLS AND SECURITY
19	FINISHING PRODUCTS AND SHOP SUPPLIES
20	COMMERCIAL DISPLAY HARDWARE
21	MOLDING, RAILING AND BATHROOM HARDWARE

I Molding, Railing and Bathroom Hardware I

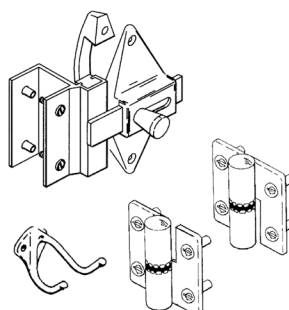
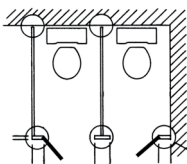
Bathroom Partition Hardware

Richelieu Section 21E

Surface Hinge Hardware Kit for Outswing Door

Products included in kit:

- Surface hinges
- Strike keeper
- Surface latch
- All screws required for door installation
- Hook
- Door pull



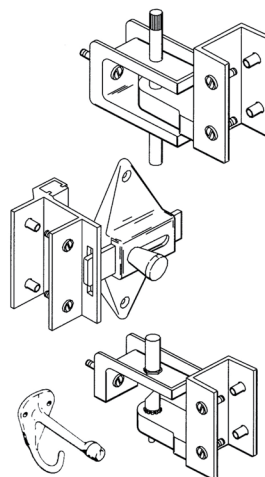
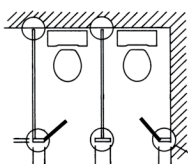
Sold by kit

PRODUCT	DOOR THICKNESS	PILASTER THICKNESS	DOOR SIDE
202000140	7/8"	1-1/4"	Left
202100140	7/8"	1-1/4"	Right
204700140	3/4"	3/4"	Left
204800140	3/4"	3/4"	Right

Hardware Kit for Inswing Door

Products included in kit:

- Pivot hinge
- Strike keeper
- Surface latch
- All screws required for door installation
- Hook-bumper combination



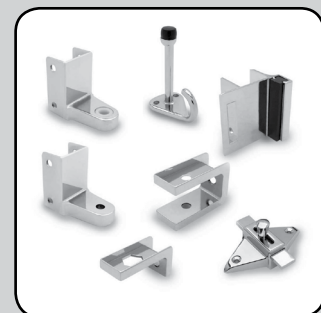
Sold by kit

PRODUCT
178000140

Door Pull 4-3/4"

Sold by unit

PRODUCT	CENTER TO CENTER
54000140	3-1/2"



Molding, Railing and Bathroom Hardware | Bathroom Partition Hardware

Stainless Steel Door Handle

- Rear fastened door handel. 4" long x 2-3/4" centers

Sold by unit

PRODUCT	HEIGHT	CENTER TO CENTER
54003170	4"	2-3/4"

Hardware Kit for Plaster

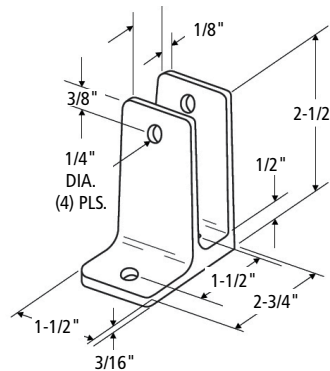
- Kit with two pilaster supports and all needed screws for pilaster installation

Products included in kit:

- 2 one-ear wall brackets (3/4")
- 4 anchors (plastic) for #14-16 screws
- 2 one-way barrel nuts (5/8", chrome)
- 2 one-way shoulder screws (3/4", chrome)
- 4 Phillips Pan-A Chrome (12" x 1-1/2")

Sold by kit

PRODUCT	PILASTER THICKNESS
152300140	1-1/4"
158100140	3/4"

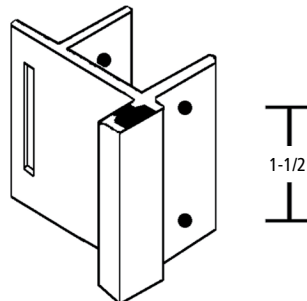


Strike Keeper for Inswing Door

- For 1-1/4" square-edged pilasters

Sold by unit

PRODUCT	CENTER TO CENTER
51100140	1-1/2"

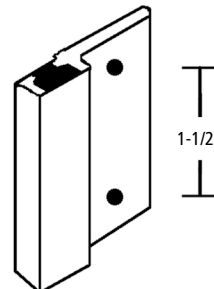


Door Strike

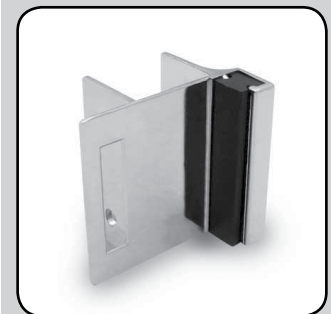
- For pilasters of any thickness. Allows emergency access when properly installed

Sold by unit

PRODUCT	CENTER TO CENTER
51700140	1-1/2"



Richelieu Section 21E



- 1 SCREWS AND FASTENERS
- 2 FURNITURE EQUIPMENT
- 3 HINGES
- 4 SLIDES
- 5 CASTERS AND LEGS
- 6 KITCHEN SOLUTIONS
- 7 CLOSET SOLUTIONS
- 8 LIGHTING SOLUTIONS
- 9 SINKS AND FAUCETS
- 10 OFFICE
- 11 SLIDING DOORS
- 12 GLASS HARDWARE
- 13 PANELS AND SURFACES
- 14 EDGE-BANDING
- 15 CABINET DOORS AND DRAWERS
- 16 CORBELS AND FLOOR REGISTERS
- 17 GLUES, SILICONES, CAULK AND INSULATING
- 18 TOOLS AND SECURITY
- 19 FINISHING PRODUCTS AND SHOP SUPPLIES
- 20 COMMERCIAL DISPLAY HARDWARE
- 21 MOLDING, RAILING AND BATHROOM HARDWARE

I Molding, Railing and Bathroom Hardware I

Bathroom Partition Hardware

Richelieu Section 21E

Single Tissue Holder

Sold by unit

PRODUCT	FINISH
73590140	Chrome



Stainless Steel Door Bumper – 2" Projection

Sold by unit

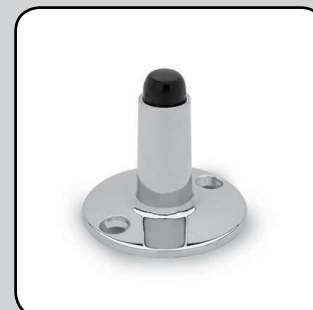
PRODUCT	FINISH
41230170	Stainless Steel



Door Stop – 2" Projection

Sold by unit

PRODUCT	MATERIAL	CENTER TO CENTER
41200140	Solid Brass	1-19/32"



Coat Hook and Door Bumper

Sold by unit

PRODUCT	FINISH
40030170	Stainless Steel



Slide Latch Mounting Surface

Sold by unit

PRODUCT	FINISH	HEIGHT	CENTER TO CENTER
50200140	Chrome	4"	2-3/4"



Molding, Railing and Bathroom Hardware | Bathroom Partition Hardware

Pilaster Shoe Kit

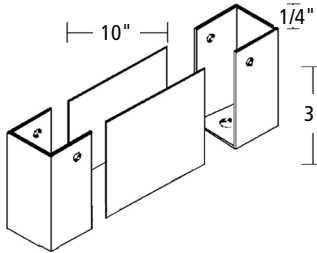
- Includes two pilaster shoes and all screws necessary for pilaster installation

Products included in kit:

- 2 pilaster post shoes (split)
- 2 floor anchors (3/8"), double expansion
- 2 one-way barrel nuts (5/8", chrome)
- 2 one-way shoulder screws (1-3/16", chrome)
- 3 hex tap bolts (3/8-16" x 2-1/2")
- 1 finished hex nut (3/8"-16 Finished Hex-Zinc)
- 1 four-prong T-nut (3/8"-16 x 7/16", zinc)
- 1 flat washer (3/8", zinc plated)

Sold by kit

PRODUCT	PANEL THICKNESS
308100140	1-1/4"

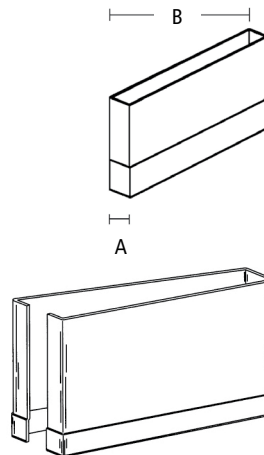


Plaster Shoe Kit

- 22-gauge #304 stainless steel

Sold by kit

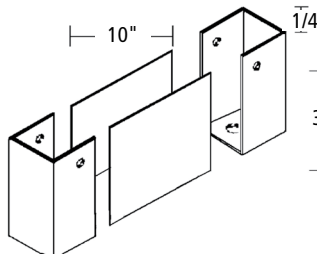
PRODUCT	DESCRIPTION	WIDTH (A)	LENGTH (B)
370690140	kit includes: - 1 anchor pack for pilaster shoe - 1 pilaster shoe (6" x 1-1/4", stainless)	1-1/4"	6"
371090140	kit includes: - 1 anchor pack for pilaster shoe - 1 pilaster shoe (10" x 1-1/4", stainless)	1-1/4"	10"
400490140	kit includes: - 1 anchor pack for pilaster shoe - 1 pilaster shoe (4" x 3/4", stainless)	3/4"	4"
400690140	kit includes: - 1 anchor pack for pilaster shoe - 1 pilaster shoe (6" x 3/4", stainless)	3/4"	6"



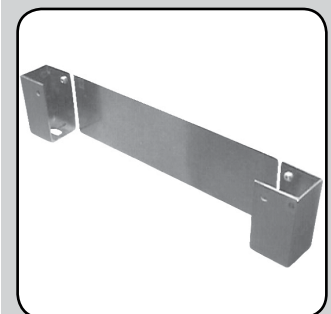
3" x 10" Spacer Plate Pack

- 3" x 10" spacer plate kit for 1-1/4" (32 mm)-thick pilaster posts

PRODUCT	QTY/BOX
309990140	2



Richelieu Section 21E



- SCREWS AND FASTENERS
- FURNITURE EQUIPMENT
- HINGES
- SLIDES
- CASTERS AND LEGS
- KITCHEN SOLUTIONS
- CLOSET SOLUTIONS
- LIGHTING SOLUTIONS
- SINKS AND FAUCETS
- OFFICE
- SLIDING DOORS
- GLASS HARDWARE
- PANELS AND SURFACES
- EDGE-BANDING
- CABINET DOORS AND DRAWERS
- CORBELS AND FLOOR REGISTERS
- GLUES, SILICONES, CAULK AND INSULATING
- TOOLS AND SECURITY
- FINISHING PRODUCTS AND SHOP SUPPLIES
- COMMERCIAL DISPLAY HARDWARE
- MOLDING, RAILING AND BATHROOM HARDWARE

I Molding, Railing and Bathroom Hardware I

Bathroom Partition Hardware

Richelieu Section 21E

Hardware Kit for Panel (double bracket)

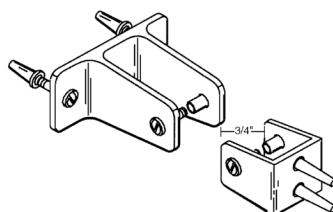
- Kit with two pilaster supports, two panel supports, and all necessary screws for pilaster installation

Products included in kit:

- 2 two-ear wall brackets (3/4")
- 2 U-brackets (3/4")
- 4 anchors (plastic) for #14-16 screws
- 4 one-way barrel nuts (5/8", chrome)
- 4 one-way shoulder screws (3/4", chrome)
- 4 Phillips Pan-A Chrome (12" x 5/8")
- 4 Phillips Pan-A Chrome (14" x 1-3/4")

Sold by kit

PRODUCT	PANEL THICKNESS
150100140	3/4"
150200140	7/8"



U-Shaped Chrome Bracket

Sold by unit

PRODUCT	DIMENSION
18900140	3/4"
19000140	7/8"
19100140	1"

Two Ear Wall Chrome Bracket

Sold by unit

PRODUCT	DIMENSION
16200140	3/4"
16300140	7/8"
17500140	1"

Urinal Screen Chrome Bracket

Sold by unit

PRODUCT	DIMENSION
12800140	1"
15900140	3/4"



Molding, Railing and Bathroom Hardware | Bathroom Partition Hardware

One Ear Wall Chrome Bracket

Sold by unit

PRODUCT	DIMENSION
16400140	3/4"
18400140	1-1/4"

Headrail Wall Chrome Bracket

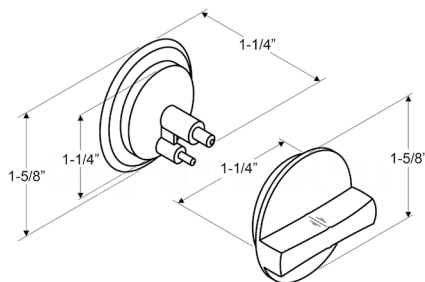
Sold by unit

PRODUCT	WIDTH
21500140	3/4" to 1
21700140	1-1/4"

Knob Set for Concealed Latch

Sold by unit

PRODUCT	DRILLING Ø
13800140	1-5/8" (41 mm)

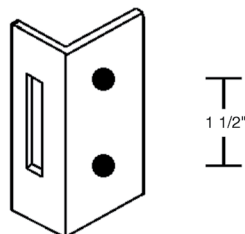


Keeper Latch for Surface Mounting

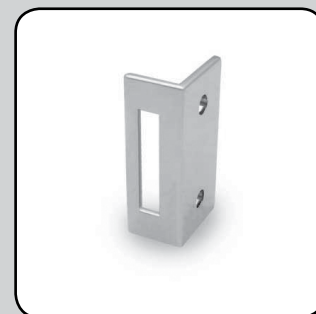
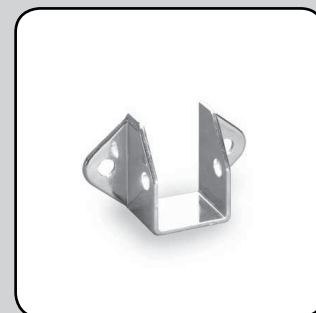
- For pilasters of any thickness

Sold by unit

PRODUCT	CENTER TO CENTER
51600140	1-1/2"



Richelieu Section 21E



- 1 SCREWS AND FASTENERS
- 2 FURNITURE EQUIPMENT
- 3 HINGES
- 4 SLIDES
- 5 CASTERS AND LEGS
- 6 KITCHEN SOLUTIONS
- 7 CLOSET SOLUTIONS
- 8 LIGHTING SOLUTIONS
- 9 SINKS AND FAUCETS
- 10 OFFICE
- 11 SLIDING DOORS
- 12 GLASS HARDWARE
- 13 PANELS AND SURFACES
- 14 EDGE-BANDING
- 15 CABINET DOORS AND DRAWERS
- 16 CORBELS AND FLOOR REGISTERS
- 17 GLUES, SILICONES, CAULK AND INSULATING
- 18 TOOLS AND SECURITY
- 19 FINISHING PRODUCTS AND SHOP SUPPLIES
- 20 COMMERCIAL DISPLAY HARDWARE
- 21 MOLDING, RAILING AND BATHROOM HARDWARE

CCRMUS 2017

Molding, Railing and Bathroom Hardware |

Bathroom Partition Hardware

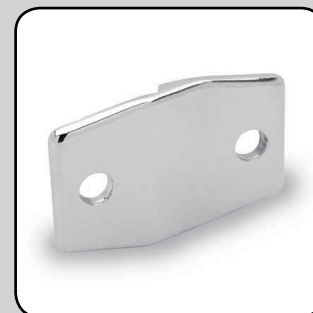
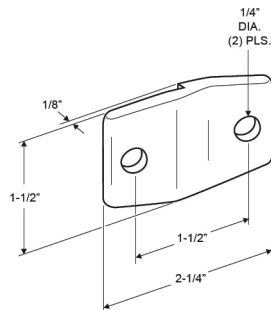
Richelieu Section 21E

Alcove Clip

- Built to join panels and pilasters of different thicknesses. Each clip 1/8" (3 mm)

Sold by unit

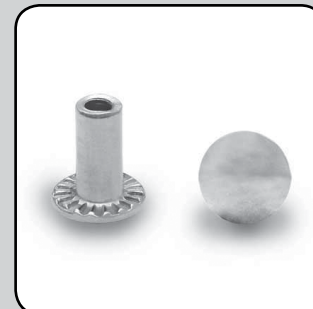
PRODUCT	CENTER TO CENTER
83400140	1-1/2"



Barrel Nut – Unslotted

Sold by unit

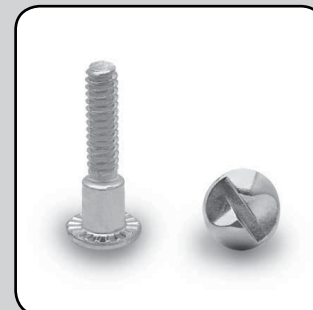
PRODUCT	LENGTH
97130140	5/8"
97630140	1/2"



One Way Shoulder Screw

Sold by unit

PRODUCT	LENGTH
97830140	3/4"
97930140	1-5/16"
98130140	1-3/16"



One Way Screw Remover – #8-10

- One-way screw remover (#8-10)

Sold by unit

PRODUCT
89250



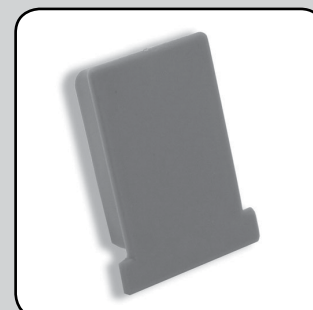
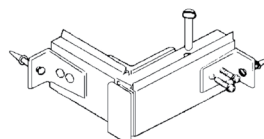
Headrail Wall Chrome Bracket

Products included in kit:

- 3 angle brackets (1-1/2" x 3-1/2")
- 2 headrail end plugs (plastic)
- 2 anchors (plastic) for #14-16 screws
- 2 Phillips Pan-A Chrome (12 x 1-1/2")
- 7 Phillips Pan-A Chrome (14 x 1")
- 7 Phillips Pan-A Chrome (14 x 3")

Sold by kit

PRODUCT
157000140



I Molding, Railing and Bathroom Hardware I

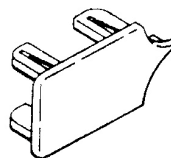
Bathroom Partition Hardware

Plug for Headrail

- 3/4" (19 mm) gray plastic headrail plug

Sold by unit

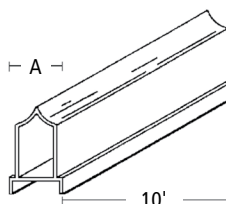
PRODUCT	QTY/BOX
67450100	1



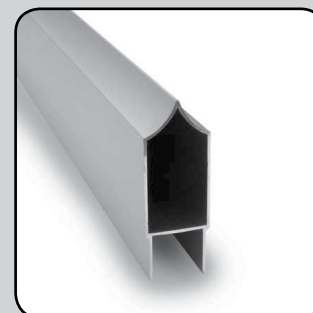
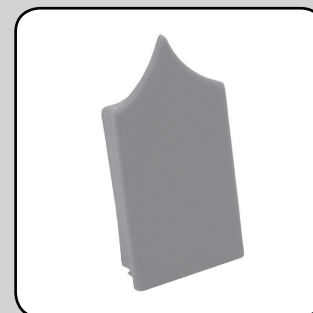
Aluminum Headrail

Sold by length

PRODUCT	WIDTH (A)	LENGTH
80132010	3/4"	10'
80152010	1-1/4"	10'



Richelieu Section 21E



- 1 SCREWS AND FASTENERS
- 2 FURNITURE EQUIPMENT
- 3 HINGES
- 4 SLIDES
- 5 CASTERS AND LEGS
- 6 KITCHEN SOLUTIONS
- 7 CLOSET SOLUTIONS
- 8 LIGHTING SOLUTIONS
- 9 SINKS AND FAUCETS
- 10 OFFICE
- 11 SLIDING DOORS
- 12 GLASS HARDWARE
- 13 PANELS AND SURFACES
- 14 EDGE-BANDING
- 15 CABINET DOORS AND DRAWERS
- 16 CORBELS AND FLOOR REGISTERS
- 17 GLUES, SILICONES, CAULK AND INSULATING
- 18 TOOLS AND SECURITY
- 19 FINISHING PRODUCTS AND SHOP SUPPLIES
- 20 COMMERCIAL DISPLAY HARDWARE
- 21 MOLDING, RAILING AND BATHROOM HARDWARE

NOTES