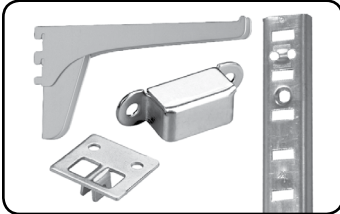


Commercial Display Hardware

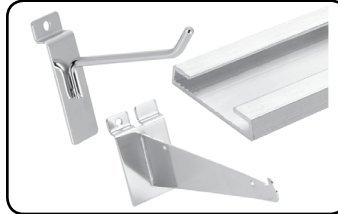
Pilasters, Standards, Brackets and Accessories

Section 20A



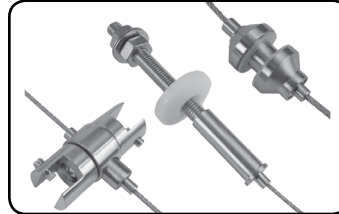
Slatwalls, Grid Walls and Accessories

Section 20B



Display Systems

Section 20C



SECTION 20

SCREWS AND FASTENERS	1
FURNITURE EQUIPMENT	2
HINGES	3
SLIDES	4
CASTERS AND LEGS	5
KITCHEN SOLUTIONS	6
CLOSET SOLUTIONS	7
LIGHTING SOLUTIONS	8
SINKS AND FAUCETS	9
OFFICE	10
SLIDING DOORS SYSTEMS	11
GLASS HARDWARE	12
PANELS AND SURFACES	13
EDGEBANDING	14
CABINET DOORS AND DRAWERS	15
CORBELS, FLOOR REGISTERS AND WINE CELLARS	16
GLUES, SILICONES, CAULK AND INSULATING	17
TOOLS AND SECURITY	18
FINISHING PRODUCTS, ABRASIVES AND SHOP SUPPLIES	19
COMMERCIAL DISPLAY HARDWARE	20
MOLDING, RAILING AND BATHROOM PARTITION HARDWARE	21

5/8" Steel Pilaster – 19 ga

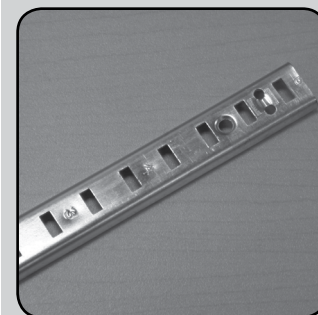
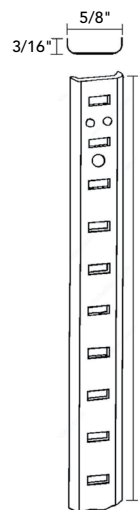
Compatible with pilaster shelf clips on page 20A4.

Sold by unit

PRODUCT	FINISH	HEIGHT	WIDTH	LENGTH	QTY/BOX
62162552G12	Zinc	3/16"	5/8"	12"	10
62162552G18	Zinc	3/16"	5/8"	18"	10
62162552G24	Zinc	3/16"	5/8"	24"	10
62162552G30	Zinc	3/16"	5/8"	30"	10
62162552G36	Zinc	3/16"	5/8"	36"	10
62162552G48	Zinc	3/16"	5/8"	48"	10
62162552G60	Zinc	3/16"	5/8"	60"	10
62162552G72	Zinc	3/16"	5/8"	72"	10
62162552G84	Zinc	3/16"	5/8"	84"	10
62162552G96	Zinc	3/16"	5/8"	96"	10

Suggested Product(s):

6216256R26, CP2562G, CP256130, CP25630 – Pilaster Shelf Clip



3/4" Surface Mount Pilaster – 19 ga

Compatible with pilaster shelf clips on page 20A5.

Sold by unit

PRODUCT	FINISH	HEIGHT	WIDTH	LENGTH	QTY/BOX
2332G36	Zinc	3/16"	13/16"	36"	100
2332G48	Zinc	3/16"	13/16"	48"	100
2332G60	Zinc	3/16"	13/16"	60"	100
2332G72	Zinc	3/16"	13/16"	72"	50
2332G96	Zinc	3/16"	13/16"	96"	50

Suggested Product(s):

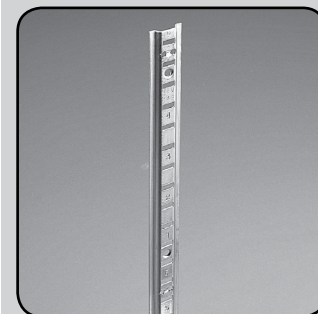
2432G – Pilaster Shelf Clip with Support

757143 – Support for Tubing

CP2562G – Pilaster Shelf Clip

CP256R2G – Pilaster Shelf Clip with Bumper, Anchors

CP2392G – Pilaster Shelf Clip



Commercial Display Hardware | Pilasters and Accessories

5/8" U-Shaped Aluminum Pilaster – 17 ga

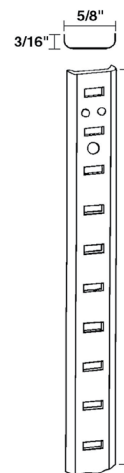
Compatible with pilaster shelf clips on page 20A5.

Sold by unit

PRODUCT	FINISH	HEIGHT	WIDTH	LENGTH	QTY/BOX
2551012	Unfinished	3/16"	5/8"	12"	100
2551018	Unfinished	3/16"	5/8"	18"	100
2551024	Unfinished	3/16"	5/8"	24"	100
2551030	Unfinished	3/16"	5/8"	30"	100
2551036	Unfinished	3/16"	5/8"	36"	100
2551048	Unfinished	3/16"	5/8"	48"	100
2551060	Unfinished	3/16"	5/8"	60"	100
2551072	Unfinished	3/16"	5/8"	72"	50
2551084	Unfinished	3/16"	5/8"	84"	50
2551096	Unfinished	3/16"	5/8"	96"	50

Suggested Product(s):

2552G – Pilaster Nails, 757143 – Support for Tubing, CP2562G – Pilaster Shelf Clip,
CP256R2G – Pilaster Shelf Clip with Bumper, 2432G – Pilaster Shelf Clip with Support



5/8" U-Shaped Steel Pilaster – 23 ga

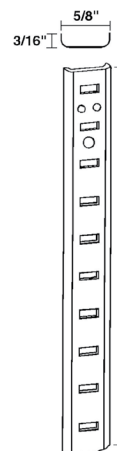
Compatible with pilaster shelf clips on page 20A5.

Sold by unit

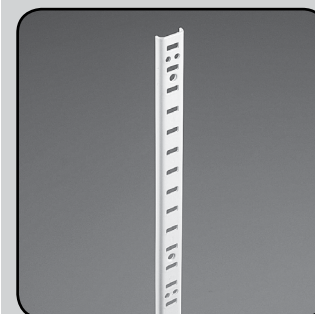
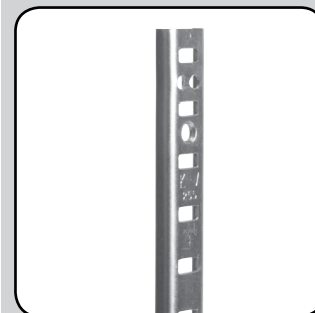
BRASS	ZINC	WHITE	BROWN	HEIGHT	WIDTH	LENGTH	QTY/BOX
–	2552G12	2553012	–	3/16"	5/8"	12"	100
25513018	2552G18	2553018	2556018	3/16"	5/8"	18"	100
25513024	2552G24	2553024	2556024	3/16"	5/8"	24"	100
–	2552G30	2553030	2556030	3/16"	5/8"	30"	100
25513036	2552G36	2553036	2556036	3/16"	5/8"	36"	100
25513048	2552G48	2553048	2556048	3/16"	5/8"	48"	100
25513060	2552G60	2553060	2556060	3/16"	5/8"	60"	100
25513072	2552G72	2553072	2556072	3/16"	5/8"	72"	50
25513084	2552G84	2553084	2556084	3/16"	5/8"	84"	50
25513096	2552G96	2553096	2556096	3/16"	5/8"	96"	50

Suggested Product(s):

757143 – Support for Tubing,
CP2392G – Pilaster Shelf Clip,
CP256R2G – Pilaster Shelf Clip with Bumper,
2432G – Pilaster Shelf Clip with Support



Richelieu Section 20A



- 1 SCREWS AND FASTENERS
- 2 FURNITURE EQUIPMENT
- 3 HINGES
- 4 SLIDES
- 5 CASTERS AND LEGS
- 6 KITCHEN SOLUTIONS
- 7 CLOSET SOLUTIONS
- 8 LIGHTING SOLUTIONS
- 9 SINKS AND FAUCETS
- 10 OFFICE
- 11 SLIDING DOORS
- 12 GLASS HARDWARE
- 13 PANELS AND SURFACES
- 14 EDGE-BANDING
- 15 CABINET DOORS AND DRAWERS
- 16 CORBELS AND FLOOR REGISTERS
- 17 GLUES, SILICONES, CAULK AND INSULATING
- 18 TOOLS AND SECURITY
- 19 FINISHING PRODUCTS AND SHOP SUPPLIES
- 20 COMMERCIAL DISPLAY HARDWARE
- 21 MOLDING, RAILING AND BATHROOM HARDWARE

5/8" Stainless Steel Pilaster SPE-1820

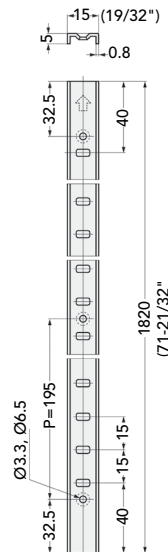
Compatible with pilaster shelf clips on page 20A7.

Sold by unit

PRODUCT	WIDTH	LENGTH	COMPATIBLE CLIP	QTY/BOX
751872170	19/32"	71-5/8"	751820170	60
751972170	15/32"	71-5/8"	75192030	60

Suggested Product(s):

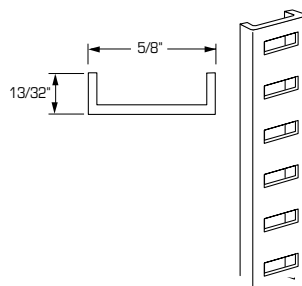
75192030 – Shelf Support for Standard



5/8" U-Shaped Metal Pilaster

Sold by unit

PRODUCT	FINISH	LENGTH	QTY/BOX
2552G12	Zinc	12"	100
2552G18	Zinc	18"	100
2552G24	Zinc	24"	100
2552G30	Zinc	30"	100
2552G36	Zinc	36"	100
2552G48	Zinc	48"	100
2552G60	Zinc	60"	100
2552G72	Zinc	72"	50
2552G84	Zinc	84"	50
2552G96	Zinc	96"	50



Suggested Product(s):

25630 – White Pilaster Shelf Support

CP2562G – Zinc Pilaster Shelf Support

256130 – Brass Pilaster Shelf Support

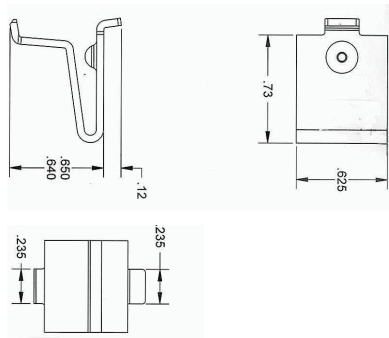
Pilaster Shelf Clips

Sold by box of 10

PRODUCT	FINISH	QTY/BOX
CP622562G	Zinc	100
6216256R2G	Zinc	100

Suggested Product(s):

62162 – Pilasters



CCRMUS 2017

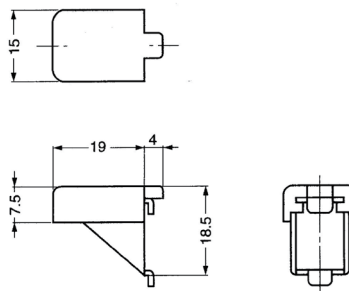
Commercial Display Hardware | Pilasters and Accessories

Pilaster Clip – Stainless Steel with Rubber Pad

Stainless steel clip with black rubber pad fits stainless steel pilasters.
Sold individually (minimum = 25 pieces).

Sold by unit

PRODUCT	WIDTH	LENGTH	QTY/BOX
751815170	3/4"	19/32"	300

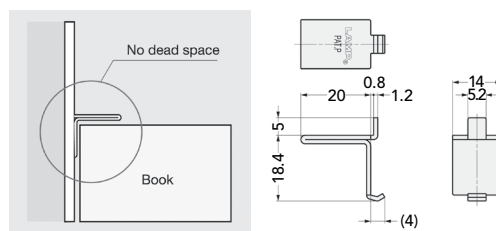


Shelf Support for Standard

Sold by unit

PRODUCT	FINISH	QTY/BOX
751820170	Stainless Steel	300

Suggested Product(s):
751872170 – Pilasters

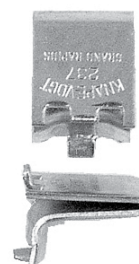


Pilaster Clip – Series 233

Zinc pilaster clips specifically designed to fit and wrap around the center channel of Series 233 pilasters.

PRODUCT	QTY/BOX
2372G	1

Suggested Product(s):
23326 – Pilasters



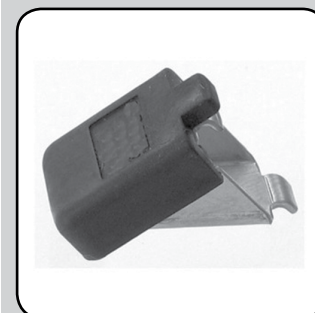
Pilaster Shelf Clip with Support

- Plate Dimension: 3/4" x 3"
- Load Rating: 60 lbs/unit

PRODUCT	FINISH	QTY/BOX
2432G	Zinc	1

Suggested Product(s):
23326 – Pilasters

Richelieu Section 20A



- 1 SCREWS AND FASTENERS
- 2 FURNITURE EQUIPMENT
- 3 HINGES
- 4 SLIDES
- 5 CASTERS AND LEGS
- 6 KITCHEN SOLUTIONS
- 7 CLOSET SOLUTIONS
- 8 LIGHTING SOLUTIONS
- 9 SINKS AND FAUCETS
- 10 OFFICE
- 11 SLIDING DOORS
- 12 GLASS HARDWARE
- 13 PANELS AND SURFACES
- 14 EDGE-BANDING
- 15 CABINET DOORS AND DRAWERS
- 16 CORBELS AND FLOOR REGISTERS
- 17 GLUES, SILICONES, CAULK AND INSULATING
- 18 TOOLS AND SECURITY
- 19 FINISHING PRODUCTS AND SHOP SUPPLIES
- 20 COMMERCIAL DISPLAY HARDWARE
- 21 MOLDING, RAILING AND BATHROOM HARDWARE

Heavy Duty Pilaster Clip Series 256

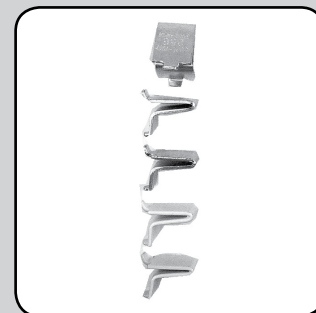
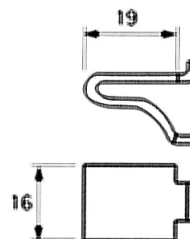
Load rating: 60 lb per unit.

Sold by unit

PRODUCT	FINISH	WIDTH	LENGTH	QTY/BOX
25622G	Zinc	5/8"	3/4"	1000
25630	White	5/8"	3/4"	100
256130	Brass	5/8"	3/4"	100
256BBLZC	Zinc	5/8"	3/4"	9000
256SALM	Almond	5/8"	3/4"	100
CP2562G	Zinc	5/8"	3/4"	100

Suggested Product(s):

62162 – Pilasters
 23326 – Pilasters
 2551 – Pilasters
 2552 – Pilasters



Heavy Duty Pilaster Shelf Clip

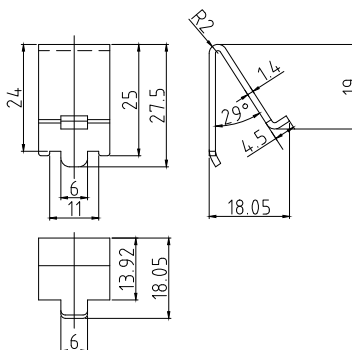
Load rating: 60 lb per unit.

Sold by unit

PRODUCT	FINISH	WIDTH	LENGTH	QTY/BOX
CP2392G	Zinc	3/4"	3"	100

Suggested Product(s):

23326 – Pilasters
 2551 – Pilasters
 25526 – Pilasters



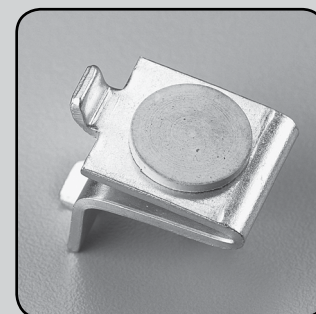
Pilaster Shelf Clip with Bumper

Sold by unit

PRODUCT	FINISH	QTY/BOX
CP256R2G	Zinc	100

Suggested Product(s):

2332 – Pilasters
 2551 – Pilasters



Commercial Display Hardware | Pilasters and Accessories

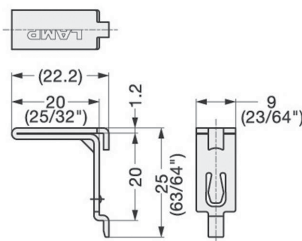
Stainless Steel Shelf Support for SPE-1820

Sold by unit

PRODUCT	QTY/BOX
75192030	100



Required Product(s): Stainless Steel Thin Profile Shelf Pilaster
SPE-1820 - 751972170



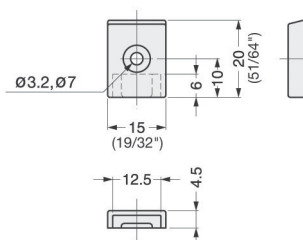
End Cap for SPE-1820

Sold by unit

PRODUCT	FINISH	QTY/BOX
751820105	Light Gray	100



Required Product(s): Stainless Steel Thin Profile Shelf Pilaster
SPE-1820 - 751972170



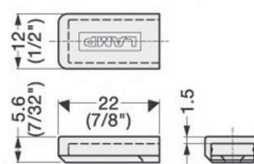
Cap for SPE-FB20S

Sold by unit

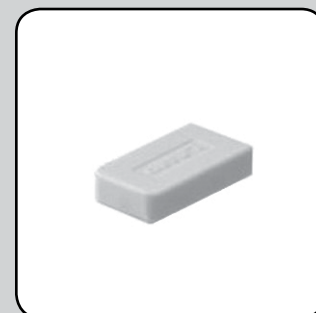
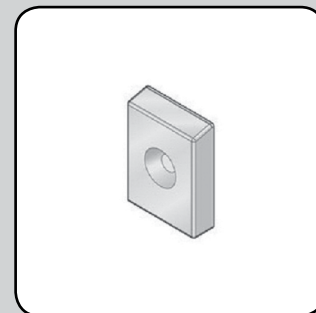
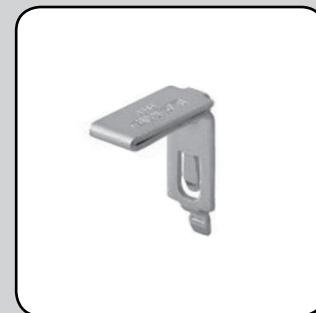
PRODUCT	FINISH	QTY/BOX
751920105	White	100



Required Product(s): Stainless Steel Shelf Support for SPE-1820 (751972170)
Pilaster - 75192030



Richelieu Section 20A



- 1 SCREWS AND FASTENERS
- 2 FURNITURE EQUIPMENT
- 3 HINGES
- 4 SLIDES
- 5 CASTERS AND LEGS
- 6 KITCHEN SOLUTIONS
- 7 CLOSET SOLUTIONS
- 8 LIGHTING SOLUTIONS
- 9 SINKS AND FAUCETS
- 10 OFFICE
- 11 SLIDING DOORS
- 12 GLASS HARDWARE
- 13 PANELS AND SURFACES
- 14 EDGE-BANDING
- 15 CABINET DOORS AND DRAWERS
- 16 CORBELS AND FLOOR REGISTERS
- 17 GLUES, SILICONES, CAULK AND INSULATING
- 18 TOOLS AND SECURITY
- 19 FINISHING PRODUCTS AND SHOP SUPPLIES
- 20 COMMERCIAL DISPLAY HARDWARE
- 21 MOLDING, RAILING AND BATHROOM HARDWARE

Pilaster Nails

- Light Duty

PRODUCT	FINISH	QTY/BOX
2552G	Zinc	650

Support for Tubing

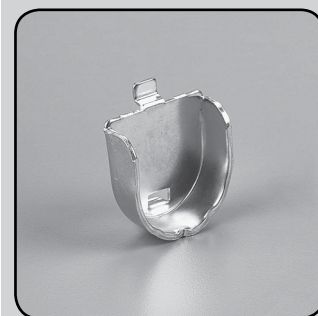
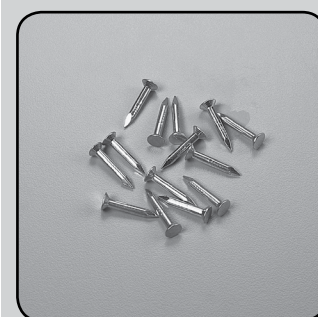
For 1-1/16" total diameter zinc rod.

Sold by unit

PRODUCT	FINISH	QTY/BOX
757143	Anochrome	100

Suggested Product(s):

2332G, 25510, 2552G, 2553 – Pilasters



Commercial Display Hardware | Standards, Brackets and Accessories

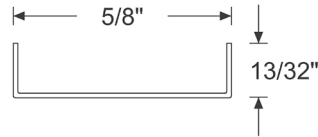
Richelieu Section 20A

5/8" U-Shaped Metal Standard, Series #80

Compatible with bracket series #160, #161, #179, #180 and #183.

- Thickness: 13/32"
- Gauge: 16
- Slot Adjustment: 1"

Sold by unit



PRODUCT		LENGTH	QTY/BOX
ANOCHROME			
8012143		12 "	10
8024143		24 "	10
8036143		36 "	10
8048143		48 "	10
8060143		60 "	10
8072143		72 "	10
8084143		84 "	10
8096143		96 "	10
80B24143		24 "	25
80B36143		36 "	25
80B48143		48 "	25
80B60143		60 "	25
80B72143		72 "	25
80B84143		84 "	25
80B96143		96 "	25

PRODUCT			LENGTH	QTY/BOX
WHITE	BLACK	MATTE BRASS		
802430	802490	—	24"	10
803630	803690	8036130	36"	10
804830	804890	8048130	48"	10
806030	806090	—	60"	10
807230	807290	—	72"	10
—	—	8096130	96"	10



- 1 SCREWS AND FASTENERS
- 2 FURNITURE EQUIPMENT
- 3 HINGES
- 4 SLIDES
- 5 CASTERS AND LEGS
- 6 KITCHEN SOLUTIONS
- 7 CLOSET SOLUTIONS
- 8 LIGHTING SOLUTIONS
- 9 SINKS AND FAUCETS
- 10 OFFICE
- 11 SLIDING DOORS
- 12 GLASS HARDWARE
- 13 PANELS AND SURFACES
- 14 EDGE-BANDING
- 15 CABINET DOORS AND DRAWERS
- 16 CORBELS AND FLOOR REGISTERS
- 17 GLUES, SILICONES, CAULK AND INSULATING
- 18 TOOLS AND SECURITY
- 19 FINISHING PRODUCTS AND SHOP SUPPLIES
- 20 COMMERCIAL DISPLAY HARDWARE
- 21 MOLDING, RAILING AND BATHROOM HARDWARE

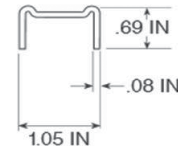
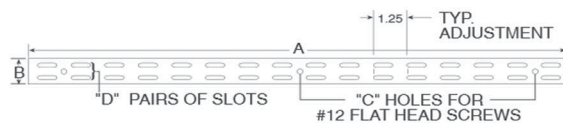
1 3/64" Heavy-Duty Double Standard, Series #82

Compatible only with bracket series #182 on page 20A15.

- Thickness: 11/16"
- Gauge: 14
- Slot Adjustment: 1-1/4"

Sold by unit

PRODUCT		LENGTH	QTY/BOX
BLACK	WHITE		
821690	821630	16-1/2"	10
822890	822830	28"	10
823990	823930	39"	10
824890	824830	48"	10
826390	826330	63"	10
827890	827830	78"	10
829490	829430	94"	10



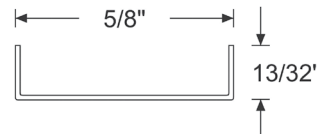
5/8" U-Shaped Single Standard

General Duty Richelieu Bracket on page 20A16.

- Thickness: 13/32"
- Gauge: 16
- Slot Adjustment: 1"

Sold by unit

PRODUCT	FINISH	LENGTH	QTY/BOX
6280242G	Zinc	24"	10
6280482G	Zinc	48"	50
6280602G	Zinc	60"	10
6280722G	Zinc	72"	50
6280842G	Zinc	84"	50
6280962G	Zinc	96"	10



Suggested Product(s): 6218006144, 6218008144, 621810144, 6218012144, 6218014144, 6218016144, 6218018144, 6218020144 – Bracket

Commercial Display Hardware | Standards, Brackets and Accessories

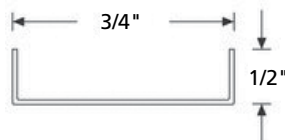
3/4" Single Metal Standard, Series #83

Compatible with bracket series #160, 161, 179, 180 and 183 on page 20A13. Can also be used with #85 standards in long shelving runs for additional support.

- Thickness: 1/2"
- Gauge: 16
- Slot Adjustment: 1"

Sold by unit

PRODUCT	FINISH	LENGTH	QTY/BOX
8324143	Anochrome	24"	10
8336143	Anochrome	36"	10
8348143	Anochrome	48"	10
8360143	Anochrome	60"	10
8372143	Anochrome	72"	10
8384143	Anochrome	84"	10
8396143	Anochrome	96"	10



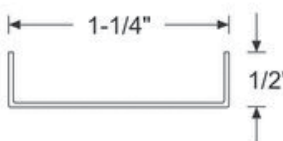
Double Slot 1-1/4" Standard, Series #85

Compatible with bracket series #183 and #185. Designed for long runs of shelving.

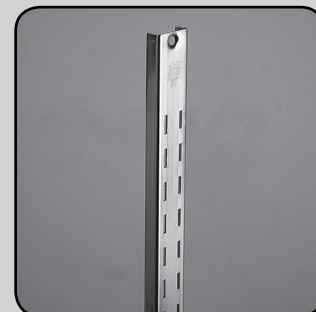
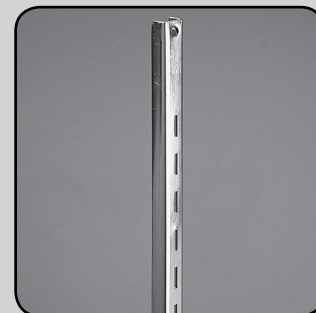
- Thickness: 1/2"
- Gauge: 16
- Width: 1-1/4"
- Slot Adjustment: 1-1/4"
- Mounting: Double
- Material: Electro-Plated Steel

Sold by unit

PRODUCT		LENGTH	QTY/BOX
ANOCHROME	WHITE		
8524143	852430	24"	1
8536143	8503630	36"	1
8548143	854830	48"	1
8560143	856030	60"	1
8572143	857230	72"	1
8584143	858430	84"	1
8596143	859630	96"	1



Richelieu Section 20A



1	SCREWS AND FASTENERS
2	FURNITURE EQUIPMENT
3	HINGES
4	SLIDES
5	CASTERS AND LEGS
6	KITCHEN SOLUTIONS
7	CLOSET SOLUTIONS
8	LIGHTING SOLUTIONS
9	SINKS AND FAUCETS
10	OFFICE
11	SLIDING DOORS
12	GLASS HARDWARE
13	PANELS AND SURFACES
14	EDGE-BANDING
15	CABINET DOORS AND DRAWERS
16	CORBELS AND FLOOR REGISTERS
17	GLUES, SILICONES, CAULK AND INSULATING
18	TOOLS AND SECURITY
19	FINISHING PRODUCTS AND SHOP SUPPLIES
20	COMMERCIAL DISPLAY HARDWARE
21	MOLDING, RAILING AND BATHROOM HARDWARE

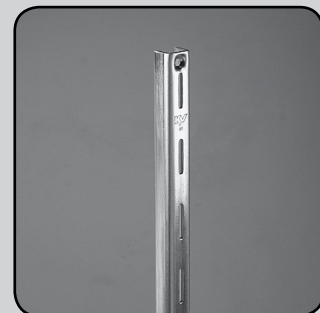
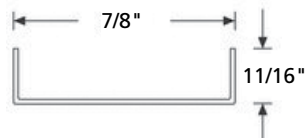
7/8" Heavy-Duty Standard, Series #87

Compatible with bracket series #186 and #187 on page 20A18.

- Thickness: 11/16"
- Gauge: 12
- Slot Adjustment: 2"

Sold by unit

PRODUCT		LENGTH	QTY/BOX
ANOCROME	WHITE		
8724143	872430	24"	5
8736143	873630	36"	5
8748143	874830	48"	5
8760143	876030	60"	5
8772143	877230	72"	5
8784143	878430	84"	5
8796143	879630	96"	5



7/8" Standard for Heavy-Duty Loads – #710 Series

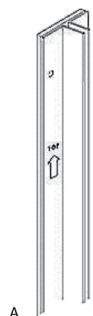
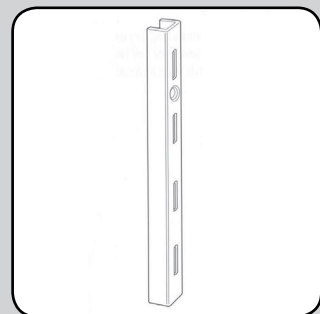
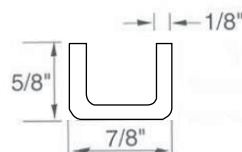
Compatible with bracket series #723, #742, #765, #766 on page 20A18.

1/8" thick steel. On center dimension from counter-sunk screw hole to counter-sunk screw hole is 12". Use 14 screws. Requires screw number #10.

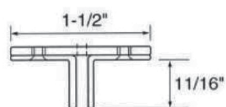
- Thickness: 5/8"
- Gauge: 11

Sold by unit

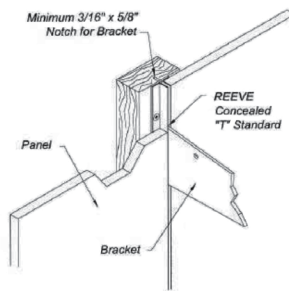
PRODUCT	FINISH	WIDTH	LENGTH	QTY/BOX
710042G	Zinc and Polished Chrome	7/8"	48"	10
710052G	Zinc and Polished Chrome	7/8"	60"	10
710062G	Zinc and Polished Chrome	7/8"	72"	10
710072G	Zinc and Polished Chrome	7/8"	84"	10
710082G	Zinc and Polished Chrome	7/8"	96"	10



B



C



All recessed/ concealed « T » standards should be mounted right side up as shown by the "top" stamp (A). Before mounting, line up each standard using the bottom of each bottom slot as the guide. Once aligned, make sure to fasten to a secure wall stud (or equivalent blocking) using appropriate screws (C). Make sure to utilize each screw hole. Please note that a minimum 3/16" by 5/8" notch is required in the stud or blocking to allow installation of brackets.

Commercial Display Hardware | Standards, Brackets and Accessories

Concealed "T" Standard – #704 and 705 Series

1/8" thick steel. On center dimension from counter-sunk screw hole to counter-sunk screw hole is 6" staggered side to side. Requires screw #10. Compatible with bracket series #742 on page 20A19.

- Gauge: 14

Sold by unit

PRODUCT	FINISH	WIDTH	LENGTH	"T" HEIGHT	QTY/BOX
704062G	Zinc and Black Powder Coat	1-1/2"	72"	11/16"	10
704082G	Zinc and Black Powder Coat	1-1/2"	96"	11/16"	10
705062G	Zinc and Black Powder Coat	1-1/2"	72"	13/16"	8
705082G	Zinc and Black Powder Coat	1-1/2"	96"	13/16"	8

Bracket with Lever Lock #160

For mounting on series #80 and #83. Bracket with single molded nylon Cam Lock® lever to quickly and firmly secure the bracket in place, minimizing the risk of disengagement.

- Adjustment: 1"

Sold by unit

PRODUCT	FINISH	LENGTH	QTY/BOX
16006143	Anochrome	6"	10
16008143	Anochrome	8"	10
16010143	Anochrome	10"	10
16012143	Anochrome	12"	10
16014143	Anochrome	14"	10
16016143	Anochrome	16"	10
16018143	Anochrome	18"	10

Suggested Product(s):

Standards #80 and #83 series

Adjustable Slanting Bracket #179

For mounting on #80 and #83 series. Adjustable to 15°, 30°, 45°, or level positions. Use with 1" adjustable standards.

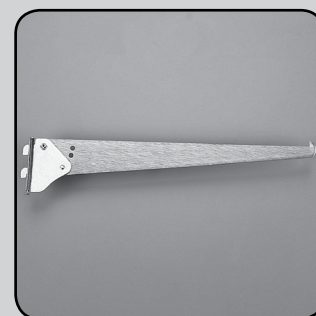
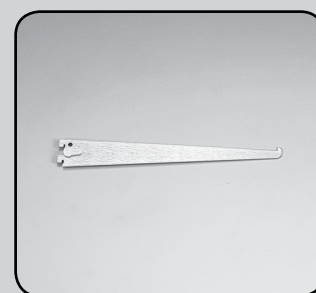
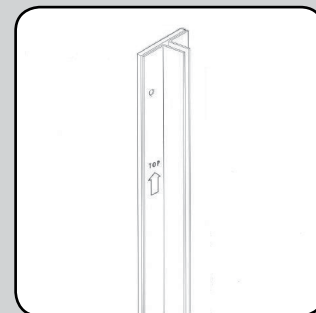
Sold by unit

PRODUCT	FINISH	LENGTH	QTY/BOX
17910143	Anochrome	10"	10
17912143	Anochrome	12"	10
17914143	Anochrome	14"	10

Suggested Product(s):

Standards #80 and #83 series

Richelieu Section 20A



1	SCREWS AND FASTENERS
2	FURNITURE EQUIPMENT
3	HINGES
4	SLIDES
5	CASTERS AND LEGS
6	KITCHEN SOLUTIONS
7	CLOSET SOLUTIONS
8	LIGHTING SOLUTIONS
9	SINKS AND FAUCETS
10	OFFICE
11	SLIDING DOORS
12	GLASS HARDWARE
13	PANELS AND SURFACES
14	EDGE-BANDING
15	CABINET DOORS AND DRAWERS
16	CORBELS AND FLOOR REGISTERS
17	GLUES, SILICONES, CAULK AND INSULATING
18	TOOLS AND SECURITY
19	FINISHING PRODUCTS AND SHOP SUPPLIES
20	COMMERCIAL DISPLAY HARDWARE
21	MOLDING, RAILING AND BATHROOM HARDWARE

CCRMUS 2017

Heavy-Duty Bracket with Lock Lever #161

Bracket with single molded nylon Cam Lock® lever to quickly and firmly secure the bracket in place, minimizing the risk of disengagement.

Sold by unit

PRODUCT	FINISH	LENGTH	QTY/BOX
16114143	Anochrome	14"	10
16116143	Anochrome	16"	10
16118143	Anochrome	18"	10
16120143	Anochrome	20"	10
16124143	Anochrome	24"	10

Suggested Product(s):

Standards #80, #83 and #85 series

General Duty Bracket #180

Compatible with #80 and #83 standards.

- Gauge: 16

Sold by unit

PRODUCT				LENGTH	QTY/BOX
ANOCHROME	WHITE	BLACK	MATTE BRASS		
18006143	1800630	1800690	–	6"	10
18008143	1800830	1800890	18008130	8"	10
18010143	1801030	1801090	18010130	10"	10
18012143	1801230	1801290	18012130	12"	10
18014143	1801430	–	–	14"	10
18016143	1801630	1801690	18016130	16"	10
18018143	1801830	–	–	18"	10

Suggested Product(s):

Standards #80 and #83 series



Commercial Display Hardware | Standards, Brackets and Accessories

Richelieu Section 20A

Heavy-Duty Bracket #182

Compatible only with #82-series standards.

Sold by unit

PRODUCT		LENGTH	QTY/BOX
WHITE	BLACK		
1820530	—	5"	10
1820730	1820790	7"	10
1820930	1820990	9"	10
1821030	1821090	10 1/2"	10
1821230	1821290	12 1/2"	10
1821430	1821490	14 1/2"	10
1821830	1821890	18 1/2"	10
1822430	1822490	24"	10

Suggested Product(s):
Standards #82 series

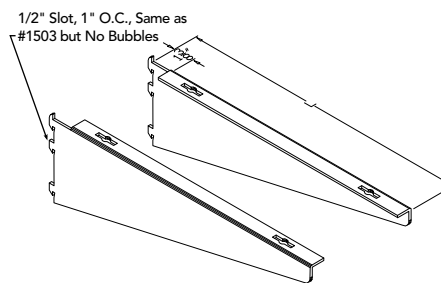
Left and Right Bracket #183

Left and right bracket compatible with #80, #83, and #85-series brackets. Adjustable 2" on 1" standard. Screws to edge of shelf.

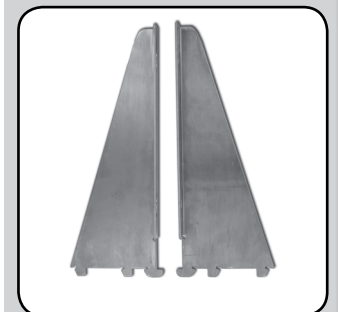
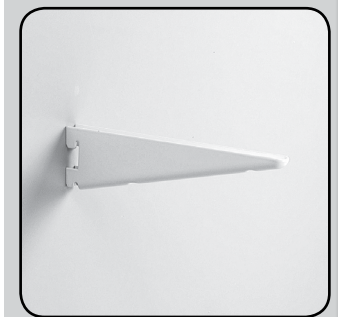
Sold by pair

PRODUCT	FINISH	LENGTH	QTY/BOX
18308143	Anochrome	8"	25 pairs
18310143	Anochrome	10"	25 pairs
18312143	Anochrome	12"	25 pairs
18314143	Anochrome	14"	25 pairs
18316143	Anochrome	16"	25 pairs
18318143	Anochrome	18"	15 pairs
18320143	Anochrome	20"	15 pairs
18322143	Anochrome	22"	10 pairs
18324143	Anochrome	24"	10 pairs

Suggested Product(s):
Standards #80, #83 and #85 series



Material and Other Dimensions are same as #1503.



- 1 SCREWS AND FASTENERS
- 2 FURNITURE EQUIPMENT
- 3 HINGES
- 4 SLIDES
- 5 CASTERS AND LEGS
- 6 KITCHEN SOLUTIONS
- 7 CLOSET SOLUTIONS
- 8 LIGHTING SOLUTIONS
- 9 SINKS AND FAUCETS
- 10 OFFICE
- 11 SLIDING DOORS
- 12 GLASS HARDWARE
- 13 PANELS AND SURFACES
- 14 EDGE-BANDING
- 15 CABINET DOORS AND DRAWERS
- 16 CORBELS AND FLOOR REGISTERS
- 17 GLUES, SILICONES, CAULK AND INSULATING
- 18 TOOLS AND SECURITY
- 19 FINISHING PRODUCTS AND SHOP SUPPLIES
- 20 COMMERCIAL DISPLAY HARDWARE
- 21 MOLDING, RAILING AND BATHROOM HARDWARE

Central Bracket #183

Compatible with series #80, #83 and #85 adjustable brackets. Adjustable 2" on 1" standard. Use with 1" adjustable standards to join two shelves.

Sold by unit

PRODUCT	FINISH	LENGTH	QTY/BOX
183C08143	Anochrome	8"	10
183C10143	Anochrome	10"	10
183C12143	Anochrome	12"	10
183C14143	Anochrome	14"	10
183C16143	Anochrome	16"	10
183C18143	Anochrome	18"	10
183C20143	Anochrome	20"	10

Suggested Product(s):
Standards #80, #83 and #85 series

General Duty Bracket

Recommended for use with #83 standards.

Sold by unit

PRODUCT	FINISH	LENGTH	QTY/BOX
588122G	Zinc	12"	50
588142G	Zinc	14"	50
588162G	Zinc	16"	50

Suggested Product(s):
Standards #83 series

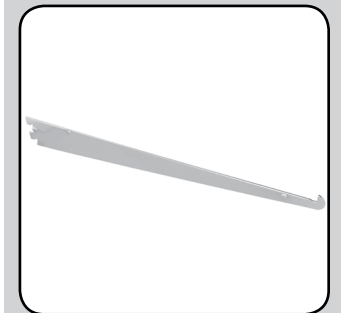
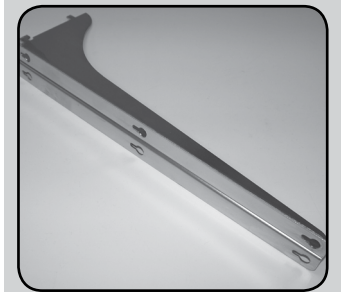
General Duty Bracket

• Gauge: 16

Sold by unit

PRODUCT	FINISH	LENGTH	QTY/BOX
6218006144	Brushed Steel	6"	10
6218008144	Brushed Steel	8"	10
6218010144	Brushed Steel	10"	10
6218012144	Brushed Steel	12"	10
6218014144	Brushed Steel	14"	10
6218016144	Brushed Steel	16"	10
6218018144	Brushed Steel	18"	10
6218020144	Brushed Steel	20"	10

Suggested Product(s):
Standards 5/8" – #6280XXX



Commercial Display Hardware | Standards, Brackets and Accessories

Hangrail Chrome Bracket

Recommended for use with series #83, #85 and #185 standards.

- Gauge: 12

Sold by unit

PRODUCT	QTY/BOX
9160212140	50

Clamp for Round Rod

For use with #9160212 bracket.

- Tube Dimensions: 1-1/4" and 1-5/16"

Sold by unit

PRODUCT	FINISH	QTY/BOX
92015140	Chrome	100

Suggested Product(s):
9160212 – Brackets

Double Bracket #185

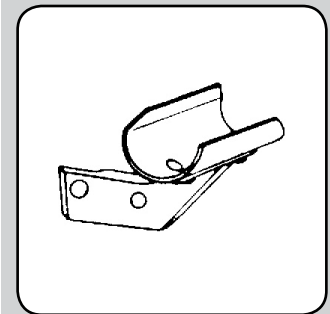
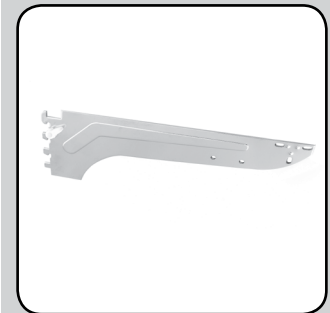
To be mounted on the #85 1-1/4" double standard.

Sold by unit

PRODUCT	FINISH	LENGTH	GAUGE	QTY/BOX
185008143	Anochrome	8"	16	10
18500830	White	8"	16	10
185010143	Anochrome	10"	16	10
185012143	Anochrome	12"	16	10
185014143	Anochrome	14"	14	10
185016143	Anochrome	16"	14	10
185018143	Anochrome	18"	14	10
185020143	Anochrome	20"	14	10
185022143	Anochrome	22"	14	10
185024143	Anochrome	24"	14	10

Suggested Product(s):
Standards #85 series

Richelieu Section 20A



- 1 SCREWS AND FASTENERS
- 2 FURNITURE EQUIPMENT
- 3 HINGES
- 4 SLIDES
- 5 CASTERS AND LEGS
- 6 KITCHEN SOLUTIONS
- 7 CLOSET SOLUTIONS
- 8 LIGHTING SOLUTIONS
- 9 SINKS AND FAUCETS
- 10 OFFICE
- 11 SLIDING DOORS
- 12 GLASS HARDWARE
- 13 PANELS AND SURFACES
- 14 EDGE-BANDING
- 15 CABINET DOORS AND DRAWERS
- 16 CORBELS AND FLOOR REGISTERS
- 17 GLUES, SILICONES, CAULK AND INSULATING
- 18 TOOLS AND SECURITY
- 19 FINISHING PRODUCTS AND SHOP SUPPLIES
- 20 COMMERCIAL DISPLAY HARDWARE
- 21 MOLDING, RAILING AND BATHROOM HARDWARE

CCRMUS 2017

Commercial Display Hardware | Standards, Brackets and Accessories

Richelieu Section 20A

Heavy-Duty Bracket with Lock Lever #186

Bracket with single molded nylon Cam Lock® lever to quickly and firmly secure the bracket in place, minimizing the risk of disengagement. Use with #87-series standards.

- Gauge: 12

Sold by unit

PRODUCT				
ANOCHROME	WHITE	HEIGHT	LENGTH	QTY/BOX
18608143	1860830	4-5/16"	8"	10
18610143	1861030	4-5/16"	10"	10

Suggested Product(s):

Standards #87 series

Heavy-Duty Bracket with Lock Lever #187

Bracket with single molded nylon Cam Lock® lever to quickly and firmly secure the bracket in place, minimizing the risk of disengagement. Use with #87-series standards.

- Gauge: 12

Sold by unit

PRODUCT				
ANOCHROME	WHITE	HEIGHT	LENGTH	QTY/BOX
18712143	1871230	5-1/2"	12"	10
18714143	1871430	5-1/2"	14"	10
18716143	1871630	5-1/2"	16"	10
18718143	1871830	5-1/2"	18"	10
18720143	1872030	6-1/2"	20"	10
18722143	1872230	6-1/2"	22"	10
18724143	1872430	6-1/2"	24"	10

* Adjustment: 2"

Suggested Product(s):

Standards #87 series

Wood Shelf Bracket – #723

Keyhole slots for wood shelf mounting. Stabilizer reduces sway. Bracket is made of .085" thick medium-duty tempered steel.

- Gauge: 13

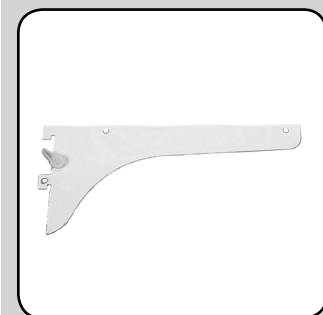
Sold by unit

RIGHT BRACKET	LEFT BRACKET	FINISH	HEIGHT	LENGTH	QTY/BOX
7232102G	7233102G	Zinc	4"	10"	12
7232122G	7233122G	Zinc	4"	12"	12
7232142G	7233142G	Zinc	4"	14"	12
7232162G	7233162G	Zinc	4"	16"	12
7232182G	7233182G	Zinc	4"	18"	12
7232202G	7233202G	Zinc	4"	20"	12

Required Product(s):

Standard #710

CCRMUS 2017



Commercial Display Hardware | Standards, Brackets and Accessories

Richelieu Section 20A

Shelf Bracket for Concealed Standard – #742

1/8" thick tempered steel.

- Gauge: 11

Application: For use with concealed/recessed/"T" standards, and glass or wood shelves.

Sold by unit

PRODUCT	FINISH	HEIGHT	LENGTH	QTY/BOX
742102G	Zinc and Polished Chrome	1-1/2"	10"	24
742122G	Zinc and Polished Chrome	1-1/2"	12"	24
742142G	Zinc and Polished Chrome	1-1/2"	14"	24
742162G	Zinc and Polished Chrome	1-1/2"	16"	24
742182G	Zinc and Polished Chrome	1-1/2"	18"	12

Suggested Product(s):

Standards #704, #705 and #710 series

Shelf/Hangrod Bracket – #766

1/8" thick tempered steel. Locknut thumb screw reduces sway. Uphook for additional stability and safety.

Use for the heaviest loads. Use with surface mounted wall standards on perimeters, loose fixtures, shelving, and hangrods.

Application: Retail stores, warehouses, grocery stores, repair garages, maintenance garages, business office storage, residential storage, and other heavy-duty load situations.

- Thickness: 1/8"
- Gauge: 11

Sold by unit

PRODUCT	FINISH	HEIGHT	LENGTH	QTY/BOX
766102G	Zinc	3-1/4"	10"	12
766122G	Zinc	3-1/4"	12"	12
766142G	Zinc	3-1/4"	14"	12
766162G	Zinc	3-1/4"	16"	12
766182G	Zinc	3-1/4"	18"	12
766202G	Zinc	3-1/4"	20"	12

Required Product(s):

Standard #710



1	SCREWS AND FASTENERS
2	FURNITURE EQUIPMENT
3	HINGES
4	SLIDES
5	CASTERS AND LEGS
6	KITCHEN SOLUTIONS
7	CLOSET SOLUTIONS
8	LIGHTING SOLUTIONS
9	SINKS AND FAUCETS
10	OFFICE
11	SLIDING DOORS
12	GLASS HARDWARE
13	PANELS AND SURFACES
14	EDGE-BANDING
15	CABINET DOORS AND DRAWERS
16	CORBELS AND FLOOR REGISTERS
17	GLUES, SILICONES, CAULK AND INSULATING
18	TOOLS AND SECURITY
19	FINISHING PRODUCTS AND SHOP SUPPLIES
20	COMMERCIAL DISPLAY HARDWARE
21	MOLDING, RAILING AND BATHROOM HARDWARE

CCRMUS 2017

Shelf/Hangrod Bracket – #767

1/8" thick tempered steel. Uphook for additional stability and safety.

Use for the heaviest loads. Use with concealed/recessed/ "T" standards on perimeters, loose fixtures, shelving, and hangrods.

Application: Retail stores, warehouses, grocery stores, repair garages, maintenance garages, business office storage, residential storage, and other heavy-duty load situations.

- Gauge: 11

Sold by unit

PRODUCT	FINISH	HEIGHT	LENGTH	QTY/BOX
767102G	Zinc and Polished Chrome	3-1/4"	10"	12
767122G	Zinc and Polished Chrome	3-1/4"	12"	12
767142G	Zinc and Polished Chrome	3-1/4"	14"	12
767162G	Zinc and Polished Chrome	3-1/4"	16"	12
767182G	Zinc and Polished Chrome	3-1/4"	18"	12

Suggested Product(s):

Standards #704, #705 and #710 series

Heavy-Duty Bookend Bracket

Compatible only with #82-series standards.

Sold by unit

PRODUCT	FINISH	LENGTH	QTY/BOX
182BE0730	White	7"	10
182BE0930	White	9"	10
182BE1030	White	10-1/2"	10

Suggested Product(s):

Standards #82 series

Hangrod Steel Bracket

For use with #225 Hangrod and #700 Series Standards

Included Product(s):

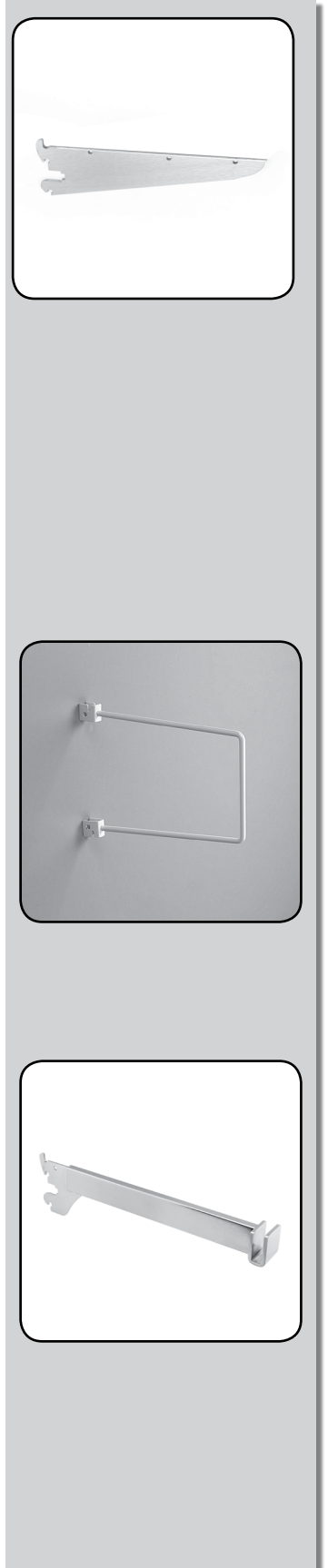
3/16" thick saddle. 1/2" x 1-1/2" tube.

Sold by unit

PRODUCT	FINISH	QTY/BOX
76512140	Chrome	12

Suggested Product(s):

Hangrod #225 (p. 20A22) concealed T Standard #704 and #705



Commercial Display Hardware | Standards, Brackets and Accessories

Folding Support

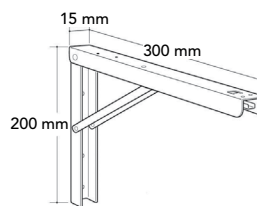
These sturdy folding L-brackets allow you to create a work surface that can be quickly folded away when no longer needed. The bracket's convenient one-hand release mechanism makes the bracket easy to open, close, or adjust without the danger of getting hands caught in a folding crossbar. Brackets can be mounted to any type of wall. Adjustable to four positions: 90°, 80°, 70°, and 0° (closed position). Durable zinc-coated steel construction with spring-loaded release lever. - Exceeds BHMA static load testing requirements.

- Material: Cold Rolled Steel

Application: Heavy-duty storage and work surface applications where limitations and/or flexibility in space is critical. Retail/grocery stores, warehouses, industrial garages, maintenance storage, office/residential storage.

Sold by unit

PRODUCT	HEIGHT	LENGTH	WIDTH	QTY/BOX
206122G	200 mm	300 mm	15 mm	10
206162G	270 mm	400 mm	20 mm	10



Workstation Heavy-Duty Brackets

1/8" steel construction. 1,000-lb load capacity (per pair). Textured powder-coat finish. Brackets are reversible. Sizes 12" x 18" to 24" x 29" with 3" x 3" (45° notch) to allow for a wall cleat and wiring.

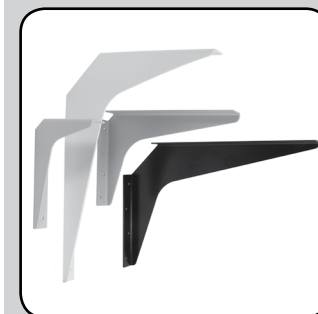
Application: Counter tops, work surfaces, book shelves, closet shelves, training areas, benches.

Sold by unit

PRODUCT		HEIGHT	LENGTH	QTY/BOX
WHITE	BLACK			
9910081230	9910081290	8"	12"	10
9910121830	9910121890	12"	18"	6
9910152130	9910152190	15"	21"	6
9910182430	9910182490	18"	24"	6
9910242430	9910242490	24"	24"	6
9910242930	9910242990	24"	29"	4

PRODUCT		HEIGHT	LENGTH	QTY/BOX
GRAY	ALMOND			
620812100	—	8"	12"	10
621824100	62182440	18"	24"	6
622424100	62242440	24"	24"	6

Richelieu Section 20A



1
SCREWS
AND
FASTENERS

2
FURNITURE
EQUIPMENT

3
HINGES

4
SLIDES

5
CASTERS
AND LEGS

6
KITCHEN
SOLUTIONS

7
CLOSET
SOLUTIONS

8
LIGHTING
SOLUTIONS

9
SINKS
AND
FAUCETS

10
OFFICE

11
SLIDING
DOORS

12
GLASS
HARDWARE

13
PANELS
AND
SURFACES

14
EDGE-
BANDING

15
CABINET
DOORS
AND
DRAWERS

16
CORBELS
AND FLOOR
REGISTERS

17
GLUES,
SILICONES,
CAULK AND
INSULATING

18
TOOLS
AND
SECURITY

19
FINISHING
PRODUCTS
AND SHOP
SUPPLIES

20
COMMERCIAL
DISPLAY
HARDWARE

21
MOLDING,
RAILING AND
BATHROOM
HARDWARE

CCRMUS 2017

Hangrod Steel Bracket

Designed for use with any 1/2" x 1" hangrod bracket.

- 1/2" x 1-1/2" tube
- 16-gauge wall thickness

Sold by unit

PRODUCT	FINISH	LENGTH	QTY/BOX
22524140	Polished Chrome	24"	10
22536140	Polished Chrome	36"	10
22548140	Polished Chrome	48"	10

Suggested Product(s):

86900140 – Hangrod Saddle, 32 mm, 76512140 – Hangrod Bracket

Hangrod Steel Saddle - 1-1/4"

Designed to hold #225 Hangrod. Use with 1-1/4" drilled fixtures.

- Die cast, 3/16" long pins

Sold by unit

PRODUCT	FINISH	QTY/BOX
86900140	Chrome	24

Required Product(s):

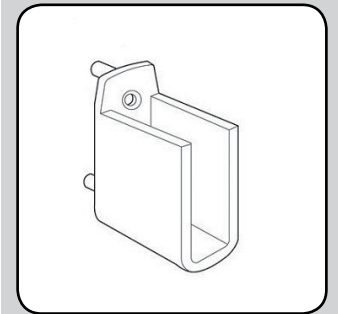
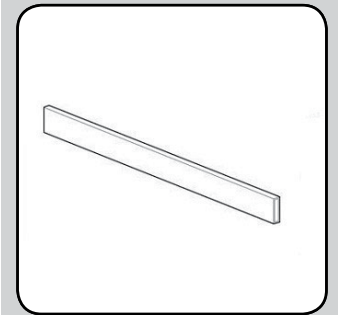
Hangrod #225 series

Standard Socket for Series #80

For series #80 (5/8").

Sold by unit

PRODUCT	FINISH	QTY/BOX
136143	Anochrome	100
137143	Anochrome	100



Commercial Display Hardware | Standards, Brackets and Accessories

Standard Socket for Series #83

For series #83 (3/4").

Sold by unit

PRODUCT	FINISH	QTY/BOX
0612G	Zinc	100
0622G	Zinc	100

Center Shelf Rest

Recommended for use with series #186 and #187 brackets. For anchoring shelf to bracket and for joining two shelves on a single bracket. Screws included.

Sold by unit

PRODUCT	FINISH	QTY/BOX
211143	Anochrome	100
21130	White	100

Front Shelf Rest

For anchoring shelf to bracket and for joining two shelves on a single bracket. Screws included.

Sold by unit

PRODUCT	FINISH	QTY/BOX
212143	Anochrome	100
21230	White	100

Suggested Product(s):

Brackets #186 and # 187 series

Clear Plastic Front Rest

Screws included.

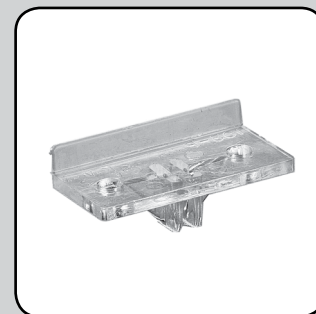
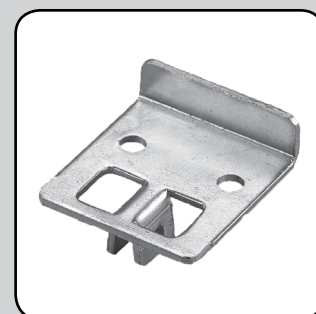
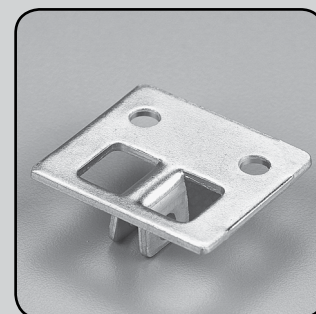
Sold by unit

PRODUCT	QTY/BOX
10311	100

Suggested Product(s):

Brackets #186 and # 187 series

Richelieu Section 20A



- 1 SCREWS AND FASTENERS
- 2 FURNITURE EQUIPMENT
- 3 HINGES
- 4 SLIDES
- 5 CASTERS AND LEGS
- 6 KITCHEN SOLUTIONS
- 7 CLOSET SOLUTIONS
- 8 LIGHTING SOLUTIONS
- 9 SINKS AND FAUCETS
- 10 OFFICE
- 11 SLIDING DOORS
- 12 GLASS HARDWARE
- 13 PANELS AND SURFACES
- 14 EDGE-BANDING
- 15 CABINET DOORS AND DRAWERS
- 16 CORBELS AND FLOOR REGISTERS
- 17 GLUES, SILICONES, CAULK AND INSULATING
- 18 TOOLS AND SECURITY
- 19 FINISHING PRODUCTS AND SHOP SUPPLIES
- 20 COMMERCIAL DISPLAY HARDWARE
- 21 MOLDING, RAILING AND BATHROOM HARDWARE

Shelf End Rest

For anchoring shelf to bracket and for joining two shelves on a single bracket.
Screws included.

Sold by unit

PRODUCT	FINISH	QTY/BOX
210030	White	100
210143	Anochrome	100

Suggested Product(s):
Brackets #186 and # 187 series

Rubber Cushion

Sold by unit

PRODUCT	FINISH	QTY/BOX
CP129105	Gray	100

Suggested Product(s):
Shelfrest #210, #211 and # 212 series

Rubber Cushion for Glass Shelf

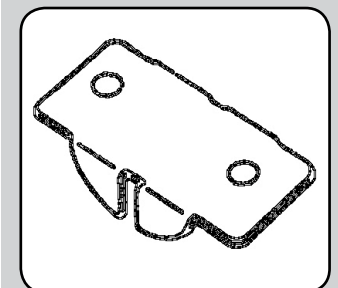
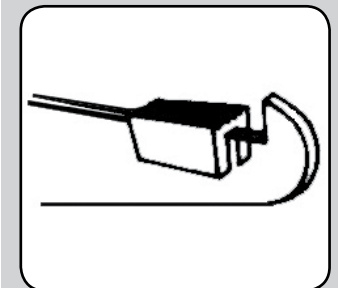
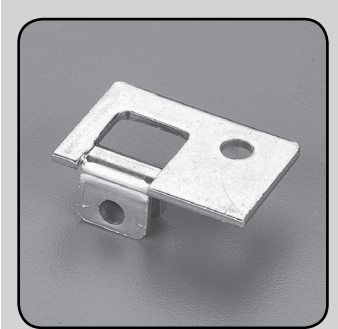
Sold by unit

PRODUCT	FINISH	QTY/BOX
109100	Gray	1000

Central Shelf Rest

Sold by unit

PRODUCT	FINISH	QTY/BOX
91714140	Chrome	100



Commercial Display Hardware | Standards, Brackets and Accessories

Clamp Shelf Fastener

Sold by unit

PRODUCT	FINISH	QTY/BOX
154143	Anochrome	100

Cushion Rest

Gray rubber cushion rest. Concave type.

Sold by unit

PRODUCT	FINISH	QTY/BOX
91717100	Gray	1000

Hang Rod Clamp for Double Bracket

Clamps to the center of a double bracket to hold a tube securely in position. Fits round hang rod tubes with the specified diameter.

Sold by unit

PRODUCT	Ø	QTY/BOX
107140	7/8 to 1 1/16"	20

Suggested Product(s):
Bracket #185 series

Shelf Rest for Double Bracket

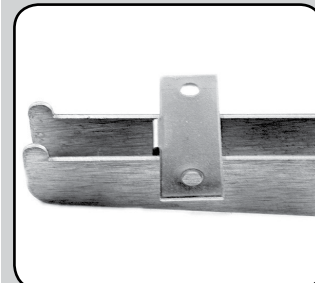
Fastens to center of a double bracket without screws in order to mount a shelf. Can be used with rubber cushions when using glass shelves

Sold by unit

PRODUCT	QTY/BOX
106143	100

Suggested Product(s):
Bracket #185 series

Richelieu Section 20A



- 1 SCREWS AND FASTENERS
- 2 FURNITURE EQUIPMENT
- 3 HINGES
- 4 SLIDES
- 5 CASTERS AND LEGS
- 6 KITCHEN SOLUTIONS
- 7 CLOSET SOLUTIONS
- 8 LIGHTING SOLUTIONS
- 9 SINKS AND FAUCETS
- 10 OFFICE
- 11 SLIDING DOORS
- 12 GLASS HARDWARE
- 13 PANELS AND SURFACES
- 14 EDGE-BANDING
- 15 CABINET DOORS AND DRAWERS
- 16 CORBELS AND FLOOR REGISTERS
- 17 GLUES, SILICONES, CAULK AND INSULATING
- 18 TOOLS AND SECURITY
- 19 FINISHING PRODUCTS AND SHOP SUPPLIES
- 20 COMMERCIAL DISPLAY HARDWARE
- 21 MOLDING, RAILING AND BATHROOM HARDWARE

CCRMUS 2017

Standards, Brackets and Accessories

Rakk Shelf System

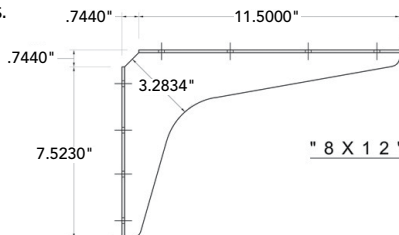
Stainless Steel Bracket, Right and Left Side

Multiple 1/4" mounting holes per side (mounting hardware not included). Reversible design makes brackets versatile and easy to use. 1/8" steel construction. Very strong: Load limit range of 1420 lb to 2920 lb per pair. 1-1/2" forms with multiple 1/4" mounting holes per side. All 3 sizes have a 3" x 3", 45° notch that allows for wall cleat and wire run clearance. Packaged in equal quantities of right and left components

Application: Workbenches, office workstations, garage storage, computer stations.

Sold by pair

PRODUCT	HEIGHT	LENGTH	QTY/BOX
62400812170	8"	12"	2
62401521170	15"	21"	2
62401824170	18"	24"	2



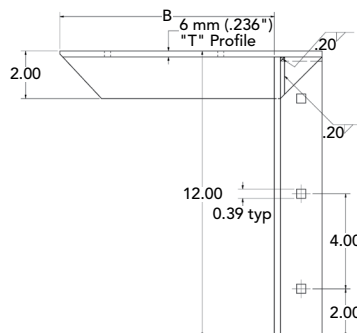
Steel Concealed Bracket, Black Powder Coat

Load limit range of 2900 lb to 7360 lb per pair. Mounting hardware included (3/8" – 16 x 3" bolt assemblies). All welds on reverse for easy, clean installation. Thickness: 1/4".

Application: Workbenches, office workstations, garage storage, computer stations.

Sold by unit

PRODUCT	LENGTH	QTY/BOX
6240141290	12"	2
6240141890	18"	2
6240142490	24"	2

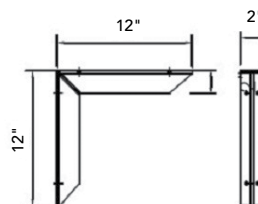


Extra-Heavy-Duty Countertop Brackets

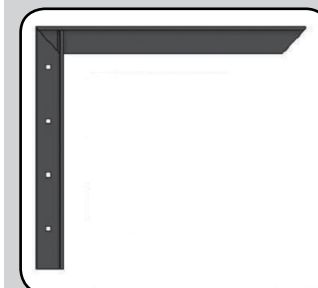
Counter support brackets provide a low-cost and easy-to-install alternative to full-height laminated panel supports. Construction: TIG (tungsten inert gas) welded along both 45° mitered sides and across the back. All sharp edges ground and deburred. Hardware: 5/16" holes accept 1/4" screws. Installation: 48" maximum spacing into studs or blocking, or as specified by countertop supplier.

Sold by unit

PRODUCT	FINISH	"T-BAR" DIMENSION	THICKNESS	QTY/BOX
EH1212	Mill Finish	2" x 2"	3/16" Top and 1/4" Vertical	20
EH1818	Mill Finish	2" x 2"	1/4"	20
EH1212P	Off-White	2" x 2"	3/16" Top and 1/4" Vertical	20
EH1824	Mill Finish	2" x 3"	3/16"	10
EH1818P	Off-White	2" x 2"	1/4"	10
EH1824P	Off-White	2" x 3"	3/16"	10



Richelieu Section 20A



Standards, Brackets and Accessories

Rakks Shelf System

Heavy-Duty Flush Mount Bracket

These brackets use an L-shaped vertical leg flange that screws to the right side of the bare stud. After installation of the brackets, drywall is installed around the bracket to hide the vertical support. Only the shelf bracket is visible. Construction: TIG (tungsten inert gas) welded along both 45° mitered sides and across the back. All sharp edges ground and deburred. Hardware: 5/16" holes accept 1/4" screws. Installation: 48" maximum spacing into studs or blocking or as specified by counter top supplier.

- Material: 6063-T6 Extruded Aluminum
- Leg Dimension: 2" x 2"

Sold by unit

PRODUCT	FINISH	HEIGHT	LENGTH	"T-BAR" DIMENSION	THICKNESS	QTY/BOX
EH1824FMP	Off-White	18"	24"	2" x 3"	3/16" Top and 1/4" Vertical	10
EH1818FMP	Off-White	18"	18"	2" x 2"	1/4"	10
EH1824FM	Mill Finish	18"	24"	2" x 3"	3/16" Top and 1/4" Vertical	10
EH1818FM	Mill Finish	18"	18"	2" x 2"	1/4"	10

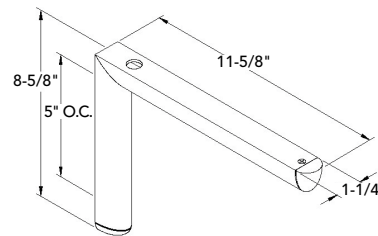
Decorative Eclipse Support Bracket

Rakks Eclipse Brackets can support counters or shelves up to 12" and 18" deep. This attractive low-profile design is easy to install with no visible hardware. Machined aluminum ends provide a smooth and near-seamless termination. Eclipse brackets can support loads up to 250 pounds per pair. If your cantilevered counter has already been installed, you can order a face plate mounting kit. This factory-installed option allows you to screw the bracket to the wall using four #8 x 2" color-matched screws.

- Material: Clear Anodized
- Thickness: 1/8"

Sold by unit

PRODUCT	HEIGHT	LENGTH	T-BAR	QTY/BOX
EC081210	8-5/8"	11-5/8"	1-1/4"	16



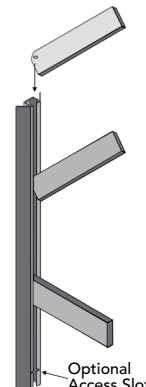
Rakks Shelf Support Brackets

Designed for maximum functionality, Rakks shelf support brackets feature infinite adjustability. Manufactured from extruded aluminum with an attractive clear anodized finish, they are designed to attach to Rakks standards and pole supports without slots or visible hardware. The signature Rakks Style bracket features a distinctive rectangular bar design that can support shelves up to 24" deep. Rakks Style brackets have excellent lateral support and work well as bookends. Rakks shelf support brackets protect your laminate panels and others from all forms of damage during handling thanks to their ingenious system.

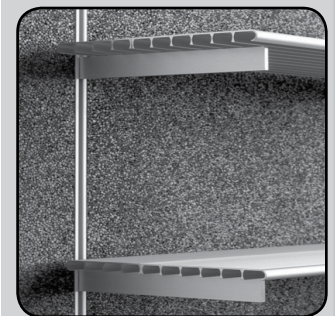
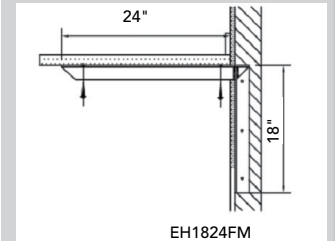
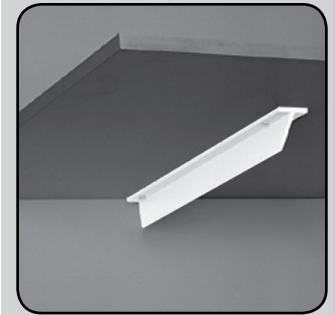
- Material: Extruded Aluminum
- Thickness: 1/4"

Sold by unit

PRODUCT	HEIGHT	LENGTH	USEABLE LENGTH	QTY/BOX
BR012C	1-1/4"	12"	11-1/4"	46
BR010C	1-1/4"	10"	9-1/4"	46



Richelieu Section 20A



1	SCREWS AND FASTENERS
2	FURNITURE EQUIPMENT
3	HINGES
4	SLIDES
5	CASTERS AND LEGS
6	KITCHEN SOLUTIONS
7	CLOSET SOLUTIONS
8	LIGHTING SOLUTIONS
9	SINKS AND FAUCETS
10	OFFICE
11	SLIDING DOORS
12	GLASS HARDWARE
13	PANELS AND SURFACES
14	EDGE-BANDING
15	CABINET DOORS AND DRAWERS
16	CORBELS AND FLOOR REGISTERS
17	GLUES, SILICONES, CAULK AND INSULATING
18	TOOLS AND SECURITY
19	FINISHING PRODUCTS AND SHOP SUPPLIES
20	COMMERCIAL DISPLAY HARDWARE
21	MOLDING, RAILING AND BATHROOM HARDWARE

Standards, Brackets and Accessories

Rakks Shelf System

Mounting Bracket for Protection Rail

Handrail Mounting Brackets consist of two heavy-gauge aluminum parts; one is attached to the wall and the other to the handrail prior to installation. The unique design of this bracket system compensates for a wide margin of installation errors and wall irregularities. Slots, in perpendicular axes to each other, provide an automatic adjustment of up 1/2" to assure a quality installation.

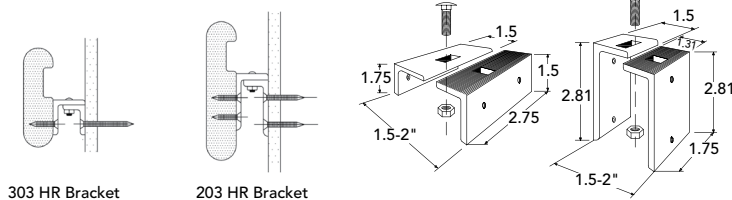
Included Product(s):

Handrail brackets are packed as follows:

- 1 box with parts for wall
- 1 box with parts for rail
- 1 box with mounting hardware

Sold by bags of 2 units

PRODUCT	DISTANCE BETWEEN THE WALL AND THE RAIL	QTY/BOX
HR203CS	1-1/2"	50
HR303CS	2"	50

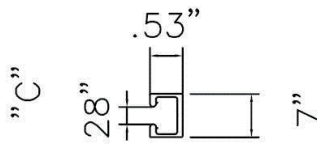


Rakks Shelf Support Brackets

The wall-mounting standards come with drilled and countersunk holes to accept color-matched mounting screws (no. 6 x 1-1/4" Phillips flat head), included. Standards must be screwed into studs, blocking, or into wall anchors sized for no. 6 screws.

- Thickness: 0.535"

PRODUCT	LENGTH	QTY/BOX
SC300C	36"	1
SC600C	72"	1



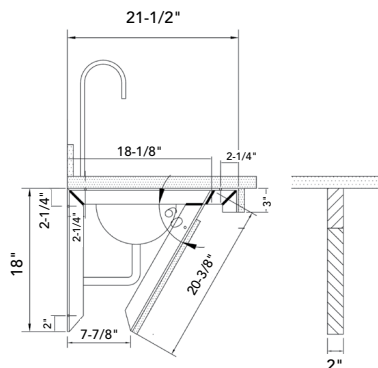
Vanity Support Bracket with Wood Mounting Face

A convenient and easy way to install sinks with millwork enclosures. Vanity Brackets provide a stable mounting surface for counters up to 24" deep and can support up to 450 pounds per bracket. Brackets are supplied with wooden strips on the front face to provide convenient mounting or removal of laminated or solid surface panels. Support size: 18" x 21-1/2". Capacity per bracket: 450 lb.

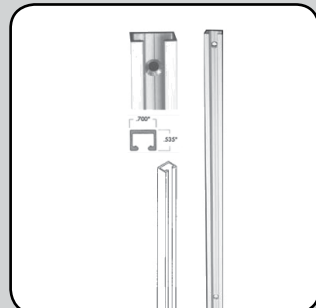
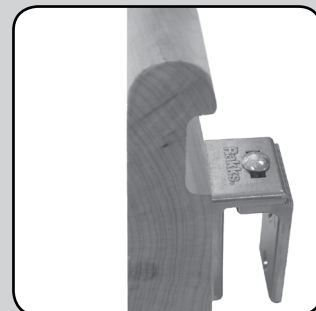
- Material: Aluminum

Sold by unit

PRODUCT	FINISH	HEIGHT	LENGTH	QTY/BOX
EH1818LV10	Mill Finish	18"	21-1/2"	6



Richelieu Section 20A



Commercial Display Hardware | Slatwalls, Grid Walls and Accessories

Slatwall Panel

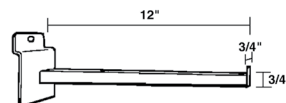
• Panel Thickness: 3/4"

PRODUCT	FINISH	HEIGHT	WIDTH	MATERIAL	QTY/BOX
N100065484	Rough MDF	8'	4'	Rough MDF	1
N100065488	Rough MDF	4'	8'	Rough MDF	1
N101065488	Maple	4'	8'	Maple Veneer	1

Garment Bracket for Slatwall

Sold by unit

PRODUCT	FINISH	HEIGHT	WIDTH	LENGTH	QTY/BOX
92800140	Chrome	3/4"	3/4"	12"	25
92806140	Chrome	1-1/2"	1/2"	12"	25

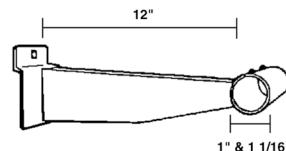


Hangrail Bracket for Slatwall

Tube diameter: 1" interior and 1-1/16" exterior.

Sold by unit

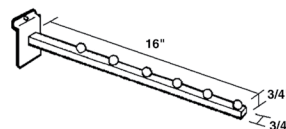
PRODUCT	FINISH	LENGTH	QTY/BOX
92804140	Chrome	12"	25



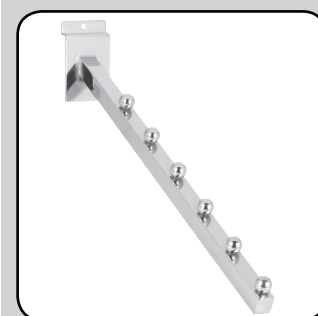
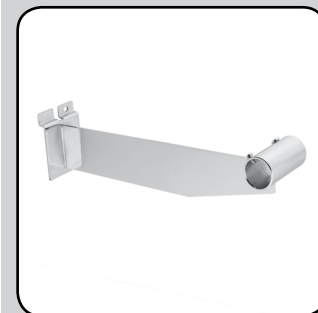
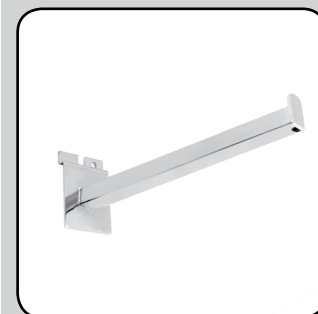
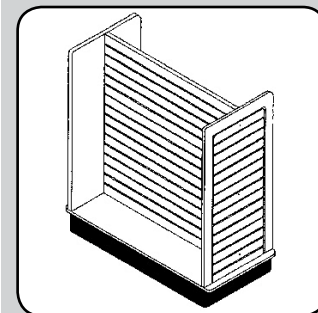
Waterfall Bracket for Slatwall

Sold by unit

PRODUCT	FINISH	HEIGHT	WIDTH	LENGTH	QTY/BOX
92802140	Chrome	3/4"	3/4"	16"	25
92803140	Chrome	3/4"	3/4"	16"	25
92807140	Chrome	1-1/2"	1/2"	16"	25
92808140	Chrome	1-1/2"	1/2"	16"	25



Richelieu Section 20B



- 1 SCREWS AND FASTENERS
- 2 FURNITURE EQUIPMENT
- 3 HINGES
- 4 SLIDES
- 5 CASTERS AND LEGS
- 6 KITCHEN SOLUTIONS
- 7 CLOSET SOLUTIONS
- 8 LIGHTING SOLUTIONS
- 9 SINKS AND FAUCETS
- 10 OFFICE
- 11 SLIDING DOORS
- 12 GLASS HARDWARE
- 13 PANELS AND SURFACES
- 14 EDGE-BANDING
- 15 CABINET DOORS AND DRAWERS
- 16 CORBELS AND FLOOR REGISTERS
- 17 GLUES, SILICONES, CAULK AND INSULATING
- 18 TOOLS AND SECURITY
- 19 FINISHING PRODUCTS AND SHOP SUPPLIES
- 20 COMMERCIAL DISPLAY HARDWARE
- 21 MOLDING, RAILING AND BATHROOM HARDWARE

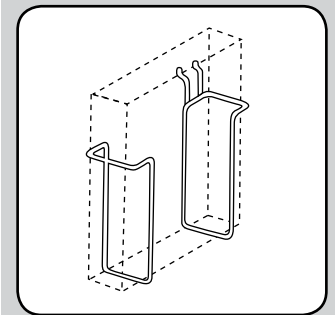
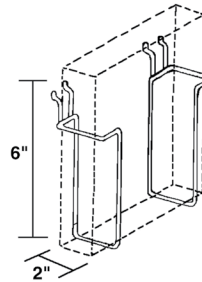
Commercial Display Hardware | Slatwalls, Grid Walls and Accessories

Richelieu Section 20B

Adjustable Literature Holder for Slatwall

Sold by unit

PRODUCT	FINISH	HEIGHT	DEPTH	QTY/BOX
92912140	Chrome	6"	2"	10



Shelf Bracket for Slatwall

Sold by unit

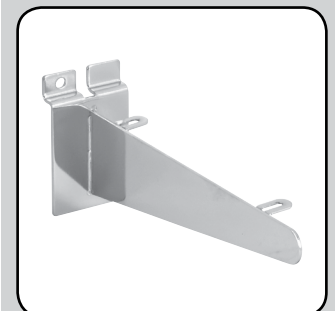
PRODUCT	FINISH	LENGTH	QTY/BOX
9281008140	Chrome	8"	25
9281010140	Chrome	10"	25
9281012140	Chrome	12"	25
9281014140	Chrome	14"	25



Wood Shelf Bracket for Slatwall

Sold by pair

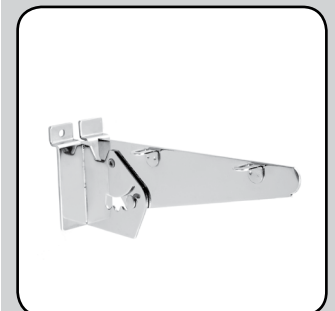
PRODUCT	FINISH	LENGTH	QTY/BOX
92812082G	Zinc	8"	25 pairs
92812102G	Zinc	10"	25 pairs
92812122G	Zinc	12"	25 pairs
92812142G	Zinc	14"	25 pairs



Adjustable Bracket for Wood Shelf (5 Positions) for Slatwall

Sold by pair

PRODUCT	FINISH	LENGTH	QTY/BOX
92813082G	Zinc	8"	25 pairs
92813102G	Zinc	10"	25 pairs
92813122G	Zinc	12"	25 pairs
92813142G	Zinc	14"	25 pairs

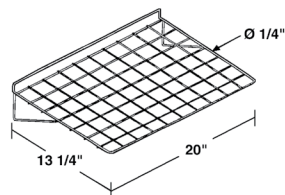


Commercial Display Hardware | Slatwalls, Grid Walls and Accessories

Slatwall Wire Shelf

Sold by unit

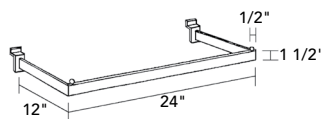
PRODUCT	FINISH	WIDTH	LENGTH	DEPTH	QTY/BOX
92907140	Chrome	20" (3/16" wire)	20"	13-1/4"	10



U Hang Tube for Slatwall

Sold by unit

PRODUCT	FINISH	WIDTH	DEPTH	QTY/BOX
9290124140	Chrome	24"	12"	10



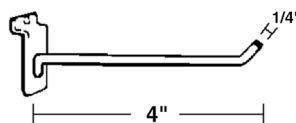
Wire Hook for Slatwall

Bracket plate dimensions: 1" width x 3-1/8" height.

- Ball Tip: 1/4"

Sold by unit

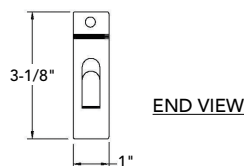
PRODUCT	FINISH	LENGTH	QTY/BOX
9281404140	Chrome	4"	100
9281406140	Chrome	6"	100
9281408140	Chrome	8"	100
9281410140	Chrome	10"	100
9281412140	Chrome	12"	100



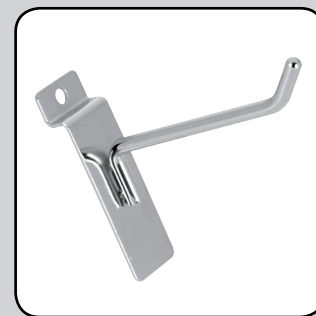
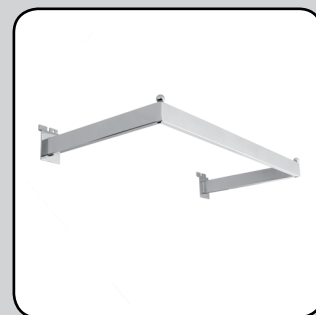
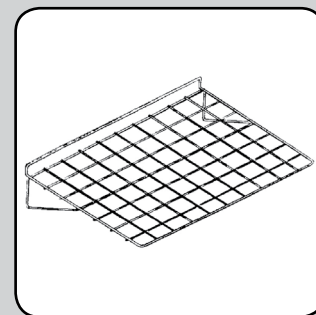
Frame Hook for Slatwall

Sold by unit

PRODUCT	FINISH	QTY/BOX
92816140	Chrome	100



Richelieu Section 20B



- 1 SCREWS AND FASTENERS
- 2 FURNITURE EQUIPMENT
- 3 HINGES
- 4 SLIDES
- 5 CASTERS AND LEGS
- 6 KITCHEN SOLUTIONS
- 7 CLOSET SOLUTIONS
- 8 LIGHTING SOLUTIONS
- 9 SINKS AND FAUCETS
- 10 OFFICE
- 11 SLIDING DOORS
- 12 GLASS HARDWARE
- 13 PANELS AND SURFACES
- 14 EDGE-BANDING
- 15 CABINET DOORS AND DRAWERS
- 16 CORBELS AND FLOOR REGISTERS
- 17 GLUES, SILICONES, CAULK AND INSULATING
- 18 TOOLS AND SECURITY
- 19 FINISHING PRODUCTS AND SHOP SUPPLIES
- 20 COMMERCIAL DISPLAY HARDWARE
- 21 MOLDING, RAILING AND BATHROOM HARDWARE

Commercial Display Hardware | Slatwalls, Grid Walls and Accessories

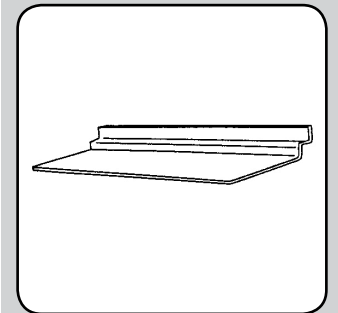
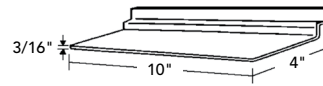
Richelieu Section 20B

Clear Shoe Shelf for Slatwall

- Shoe Shelf: 10"
- Thickness: 3/16"

Sold by unit

PRODUCT	DEPTH	LOAD CAPACITY	QTY/BOX
9121311	4"	10 lb	50

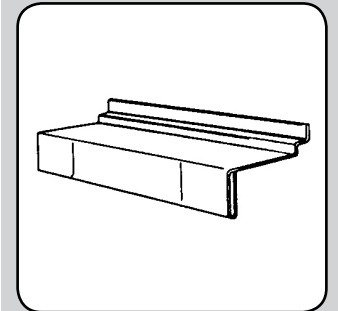
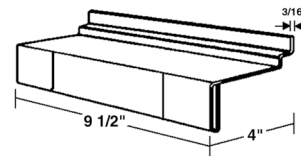


Clear Shoe Shelf for Slatwall

- Shoe Shelf: 9-1/2"
- Thickness: 3/16"

Sold by unit

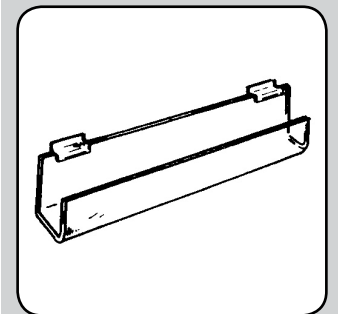
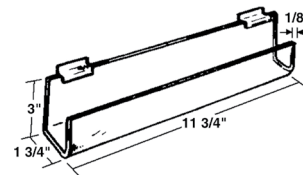
PRODUCT	DEPTH	LOAD CAPACITY	QTY/BOX
9014611	4"	10 lb	10



Clear Card Holder for Slatwall

- Thickness: 1/8"

PRODUCT	HEIGHT	DEPTH	LOAD CAPACITY	QTY/BOX
9012611	3"	1-3/4"	15 lb	1

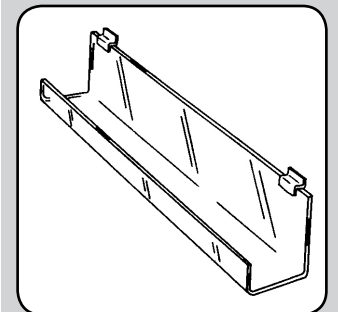
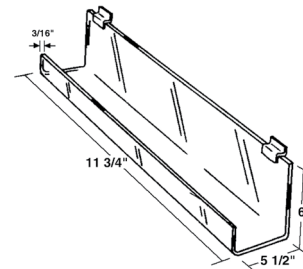


Clear Large Card Holder for Slatwall

- Thickness: 3/16"

Sold by unit

PRODUCT	WIDTH	HEIGHT	DEPTH	LOAD CAPACITY	QTY/BOX
9013411	11-3/4"	6"	5-1/2"	20 lb	10
9013511	23-3/4"	6"	5-1/2"	24 lb	10

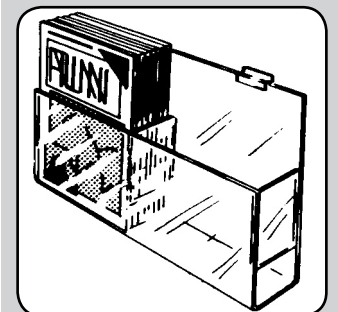


Clear Magazine Display for Slatwall

- Thickness: 1/8"

Sold by unit

PRODUCT	HEIGHT	WIDTH	DEPTH	LOAD CAPACITY	QTY/BOX
9013811	11"	9"	3"	15 lb	10
9014011	11"	18"	3"	30 lb	10



Commercial Display Hardware | Slatwalls, Grid Walls and Accessories

Clear CD Display for Slatwall

- Thickness: 3/16"

Sold by unit

PRODUCT	WIDTH	DEPTH	LOAD CAPACITY	QTY/BOX
9016911	18-3/4"	2-1/2"	25 lb	10

Clear Slatwall Shelf for Slatwall

- Thickness: 1/8"

Sold by unit

PRODUCT	WIDTH	DEPTH	LOAD CAPACITY	QTY/BOX
9010511	12"	6"	10 lb	10
9010911	16"	12"	12 lb	10

Clear Shelf with Lip for Slatwall

- Thickness: 3/16"

Sold by unit

PRODUCT	WIDTH	DEPTH	LOAD CAPACITY	QTY/BOX
9011911	16"	12"	20 lb	10

Clear Brochure Holder for Slatwall

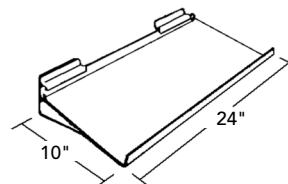
- Thickness: 1/8"

Sold by unit

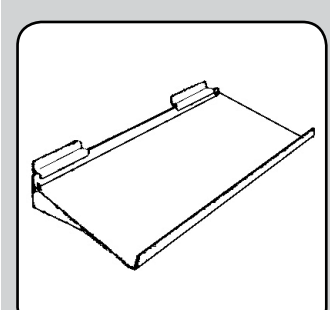
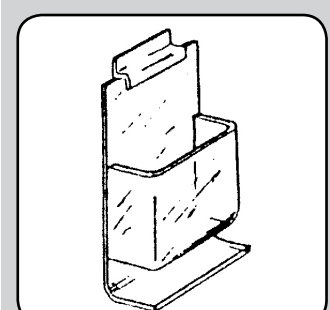
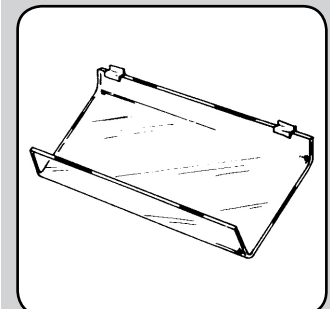
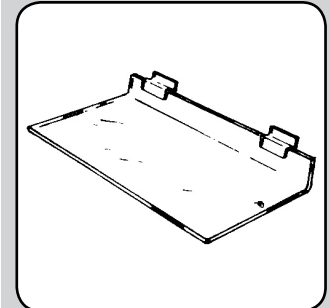
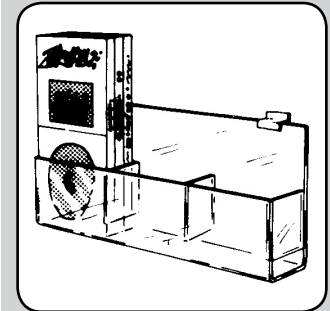
PRODUCT	HEIGHT	WIDTH	LOAD CAPACITY	QTY/BOX
9029011	9"	4"	10 lb	10
9029211	9"	8-1/2"	15 lb	10

Clear Reinforced Shelf with Lip for Slatwall

PRODUCT	WIDTH	DEPTH	LOAD CAPACITY	QTY/BOX
9015511	24"	10"	25 lb	1



Richelieu Section 20B



- 1 SCREWS AND FASTENERS
- 2 FURNITURE EQUIPMENT
- 3 HINGES
- 4 SLIDES
- 5 CASTERS AND LEGS
- 6 KITCHEN SOLUTIONS
- 7 CLOSET SOLUTIONS
- 8 LIGHTING SOLUTIONS
- 9 SINKS AND FAUCETS
- 10 OFFICE
- 11 SLIDING DOORS
- 12 GLASS HARDWARE
- 13 PANELS AND SURFACES
- 14 EDGE-BANDING
- 15 CABINET DOORS AND DRAWERS
- 16 CORBELS AND FLOOR REGISTERS
- 17 GLUES, SILICONES, CAULK AND INSULATING
- 18 TOOLS AND SECURITY
- 19 FINISHING PRODUCTS AND SHOP SUPPLIES
- 20 COMMERCIAL DISPLAY HARDWARE
- 21 MOLDING, RAILING AND BATHROOM HARDWARE

Commercial Display Hardware |

Slatwalls, Grid Walls and Accessories

Richelieu Section 20B

Wall Bracket for Grid Wall

3" projection.

Sold by unit

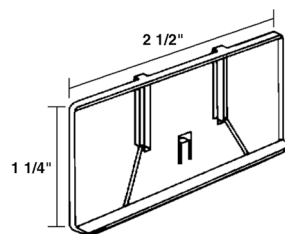
PRODUCT	FINISH	QTY/BOX
92505140	Chrome	100

Clear Label Holder for Grid Wall

Sold by unit

PRODUCT*	HEIGHT	WIDTH	QTY/BOX
931142510	1-1/4"	2-1/2"	100

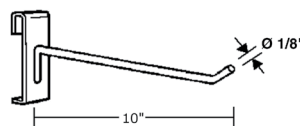
* Other sizes available by special order.



Hook for Grid Wall

Sold by unit

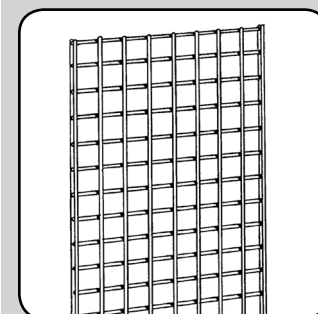
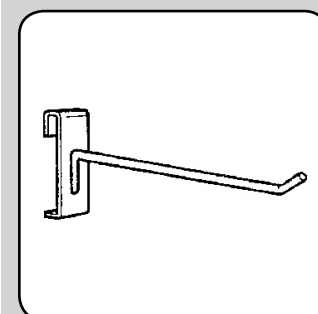
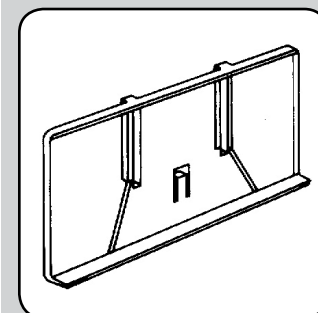
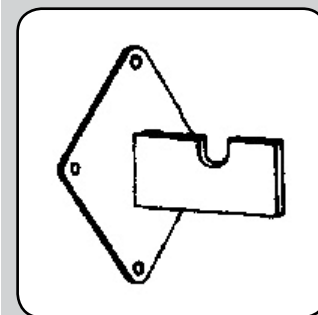
PRODUCT	Ø	LENGTH	QTY/BOX
9261010140	1/8"	10"	100
9261004140	1/8"	4"	100
9261006140	1/8"	6"	100
9261008140	1/8"	8"	100



Grid Wall Steel Panel

Sold in multiples of 2

PRODUCT	FINISH	HEIGHT	WIDTH	QTY/BOX
9240030	White	4'	2'	2
9240230	White	6'	2'	2



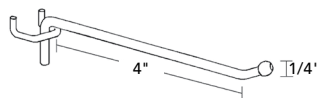
Commercial Display Hardware | Slatwalls, Grid Walls and Accessories

Richelieu Section 20B

Single Hook for Grid Wall

Sold by unit

PRODUCT	FINISH	LENGTH	USABLE	BALL TIP	QTY/BOX
9301042G	Zinc	4"	4"	1/4"	500
9301062G	Zinc	6"	6"	1/4"	500
9301082G	Zinc	8"	8"	1/4"	250
9301102G	Zinc	10"	10"	1/4"	250
9301122G	Zinc	12"	12"	1/4"	250
9302042G	Zinc	4"	4"	5/16"	250
9302062G	Zinc	6"	6"	5/16"	250
9302082G	Zinc	8"	8"	5/16"	250
9302102G	Zinc	10"	10"	5/16"	250
9302122G	Zinc	12"	12"	5/16"	250

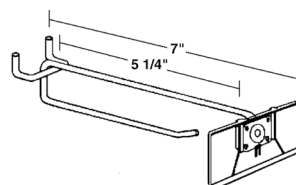


Label Holder Hook for Grid Wall

Label holder not included.

Sold by unit

PRODUCT	FINISH	LENGTH	USABLE	QTY/BOX
9305062G	Zinc	7"	5-1/4"	100
9305082G	Zinc	9"	7-1/4"	100



Single Plastic Hook for Grid Wall

Sold by unit

PRODUCT*	FINISH	LENGTH	QTY/BOX
93400430	White	4"	100
93400830	White	8"	100

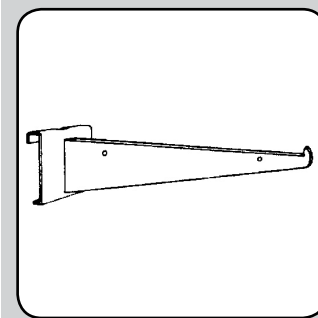
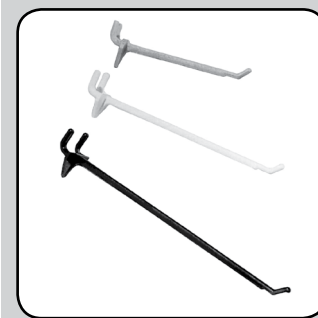
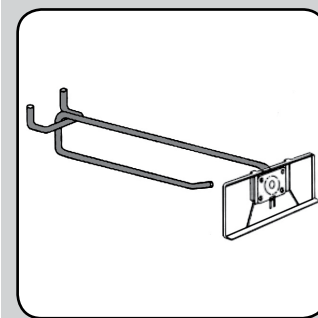
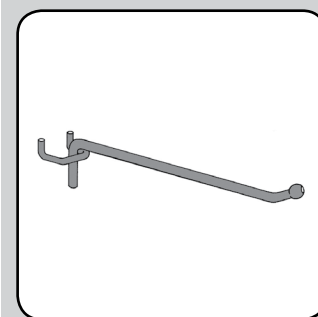
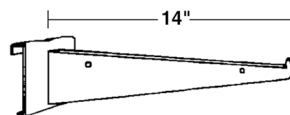
*Other finishes available on special order.

Shelf Support for Grid Panel

Load capacity of approximately 50 lb

Sold by unit

PRODUCT	FINISH	LENGTH	QTY/BOX
9260612140	Chrome	12"	25
9260614140	Chrome	14"	25



- 1 SCREWS AND FASTENERS
- 2 FURNITURE EQUIPMENT
- 3 HINGES
- 4 SLIDES
- 5 CASTERS AND LEGS
- 6 KITCHEN SOLUTIONS
- 7 CLOSET SOLUTIONS
- 8 LIGHTING SOLUTIONS
- 9 SINKS AND FAUCETS
- 10 OFFICE
- 11 SLIDING DOORS
- 12 GLASS HARDWARE
- 13 PANELS AND SURFACES
- 14 EDGE-BANDING
- 15 CABINET DOORS AND DRAWERS
- 16 CORBELS AND FLOOR REGISTERS
- 17 GLUES, SILICONES, CAULK AND INSULATING
- 18 TOOLS AND SECURITY
- 19 FINISHING PRODUCTS AND SHOP SUPPLIES
- 20 COMMERCIAL DISPLAY HARDWARE
- 21 MOLDING, RAILING AND BATHROOM HARDWARE

I Commercial Display Hardware I

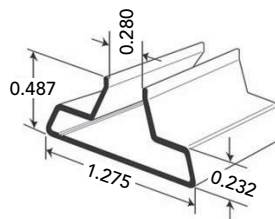
Slatwalls, Grid Walls and Accessories

Richelieu Section 20B

Slot Wall Aluminum Insert

Sold by unit

PRODUCT	FINISH	LENGTH	QTY/BOX
20608D10	Mill Finish (M)	97"	25



Heavy-Duty Slot Wall Aluminum Insert

This insert makes your slot wall panels stronger.

Sold by unit

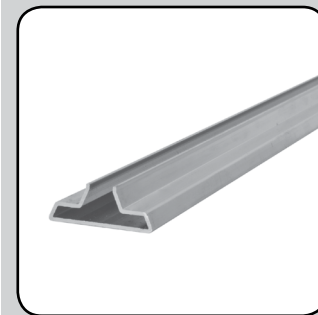
PRODUCT	FINISH	LENGTH	QTY/BOX
N960010	Mill Finish (M)	Max. 96"	25

Slot Wall Aluminum Insert

This insert strengthens your slot wall panels.

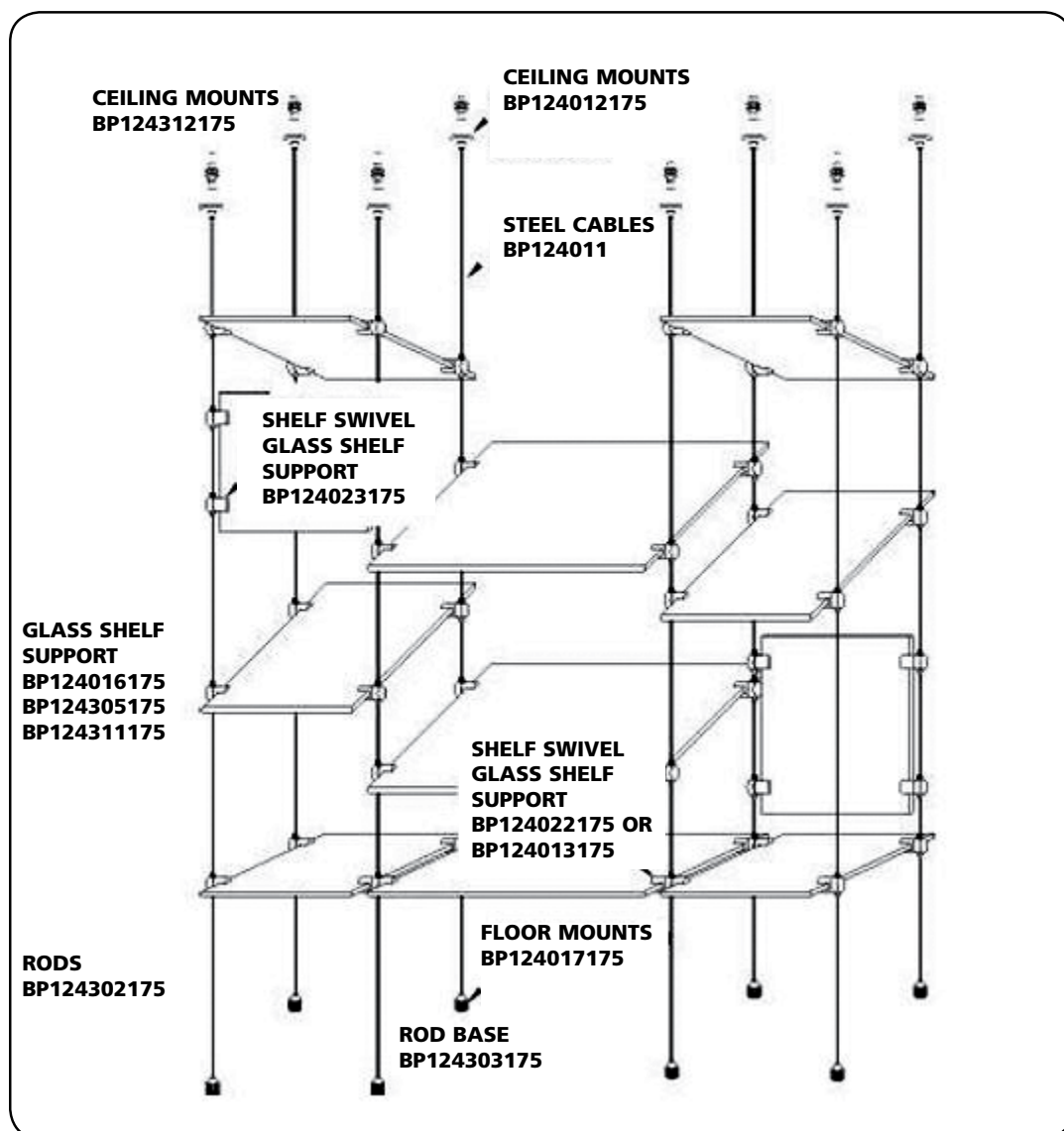
Sold by unit

PRODUCT	FINISH	LENGTH	QTY/BOX
19508D10	Mill Finish (M)	96"	25



Wire Display Cable System

- Maximum capacity: 26.5 lb (12kg) per shelf;
 79.4 lb (36 kg) per column
- Suspended shelving, open frameless concept
- Easy to adjust without tools; shelves will be held at any height level along cable thanks to the built-in mechanism inside the connector
- Variety of applications such as hanging of posters, display shelving in a frameless environment
- Finish: Brushed Chrome
- Material: Zinc Alloy

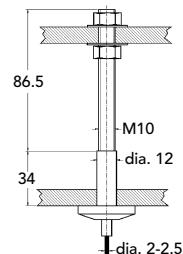


* **BORED SHELF SUPPORTS FOR GLASS (NOT SHOWN)**
BP1240115175

1	SCREWS AND FASTENERS
2	FURNITURE EQUIPMENT
3	HINGES
4	SLIDES
5	CASTERS AND LEGS
6	KITCHEN SOLUTIONS
7	CLOSET SOLUTIONS
8	LIGHTING SOLUTIONS
9	SINKS AND FAUCETS
10	OFFICE
11	SLIDING DOORS
12	GLASS HARDWARE
13	PANELS AND SURFACES
14	EDGE-BANDING
15	CABINET DOORS AND DRAWERS
16	CORBELS AND FLOOR REGISTERS
17	GLUES, SILICONES, CAULK AND INSULATING
18	TOOLS AND SECURITY
19	FINISHING PRODUCTS AND SHOP SUPPLIES
20	COMMERCIAL DISPLAY HARDWARE
21	MOLDING, RAILING AND BATHROOM HARDWARE

Set of 4 Ceiling Mounts

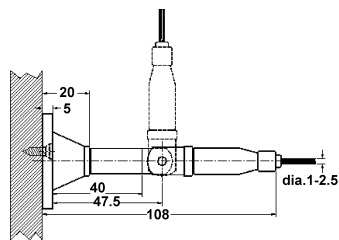
PRODUCT	FINISH	MATERIAL	CAPACITY	QTY/BOX
BP124012175	Brushed Chrome	Zinc Alloy	79.4 lb (36 kg)	1 set



Set of 4 Ceiling Mounts

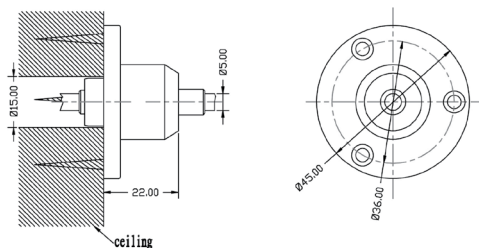
• Screws not included

PRODUCT	FINISH	MATERIAL	CAPACITY	QTY/BOX
BP124024175	Brushed Chrome	Brass and Zinc	26.5 lb (12 kg) per shelf	1 set



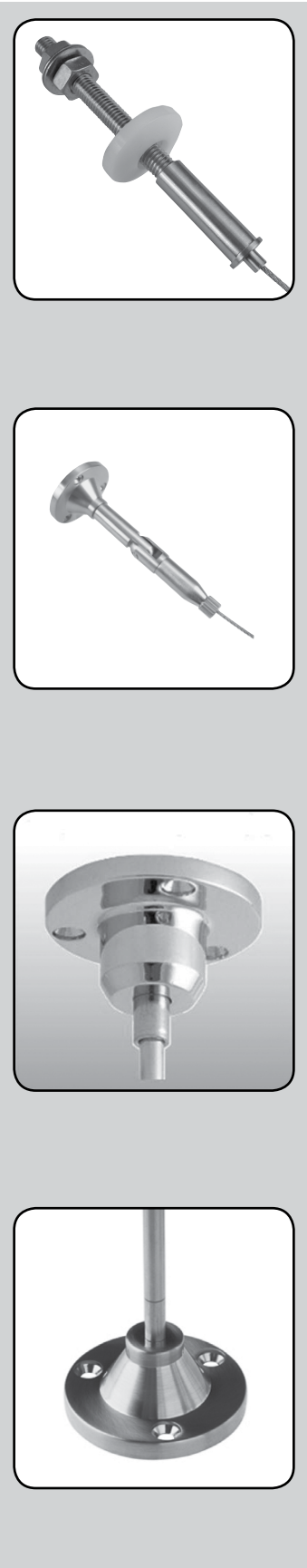
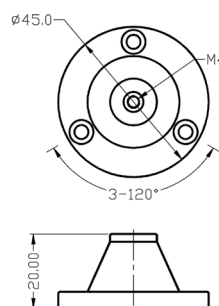
Set of 4 Ceiling Mounting Units

PRODUCT	FINISH	MATERIAL	CAPACITY	QTY/BOX
BP124312175	Brushed Chrome	Zinc Alloy	74.6 lb (36 kg)	1 set



Set of 4 Rod Bases

PRODUCT	FINISH	MATERIAL	QTY/BOX
BP124303175	Brushed Chrome	Zinc Alloy	1 set

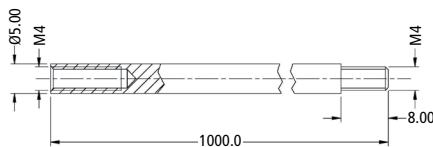


Commercial Display Hardware |

Display Systems

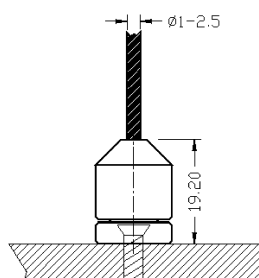
Set of 4 Stainless Steel Rods

PRODUCT	FINISH	MATERIAL	QTY/BOX
BP124302175	Brushed Chrome	Zinc Alloy	1 set



Set of 4 Floor Mounts

PRODUCT	FINISH	MATERIAL	QTY/BOX
BP124017175	Brushed Chrome	Zinc	1 set



Set of 4 Steel Cables

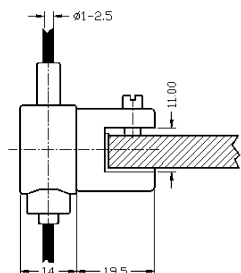
- Length: 16.4' (5 m)
- Diameter: 3/32" (2.5 mm)

PRODUCT	FINISH	CAPACITY	QTY/BOX
BP124011	Natural Steel	79.4 lb (36 kg)	1 set

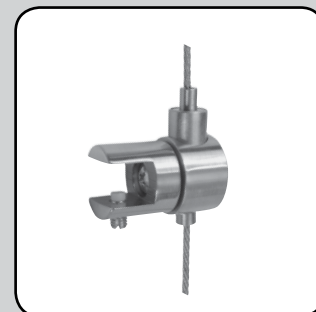
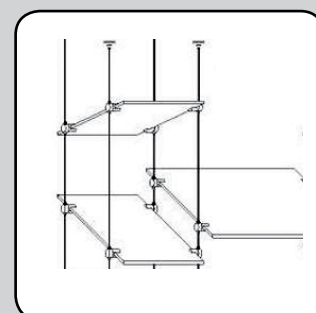
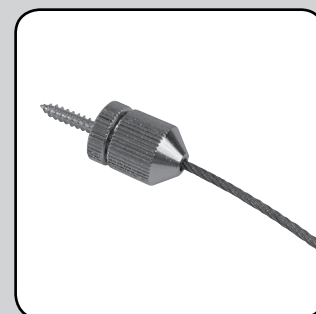
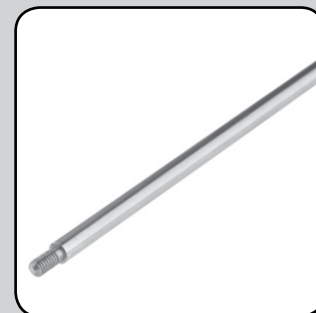
Set of 4 Swivel Glass Shelf Supports

- Thickness: 3/16 to 5/16" (5 to 8 mm)

PRODUCT	FINISH	MATERIAL	CAPACITY	QTY/BOX
BP124023175	Brushed Chrome	Brass and Zinc	26.5 lb (12 kg)	1 set



Richelieu Section 20C



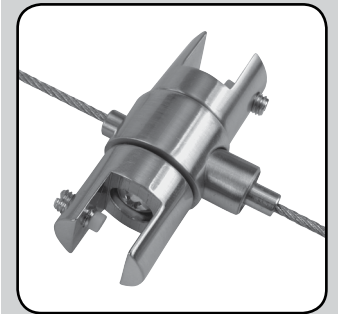
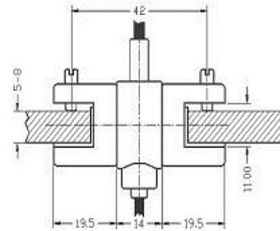
- 1 SCREWS AND FASTENERS
- 2 FURNITURE EQUIPMENT
- 3 HINGES
- 4 SLIDES
- 5 CASTERS AND LEGS
- 6 KITCHEN SOLUTIONS
- 7 CLOSET SOLUTIONS
- 8 LIGHTING SOLUTIONS
- 9 SINKS AND FAUCETS
- 10 OFFICE
- 11 SLIDING DOORS
- 12 GLASS HARDWARE
- 13 PANELS AND SURFACES
- 14 EDGE-BANDING
- 15 CABINET DOORS AND DRAWERS
- 16 CORBELS AND FLOOR REGISTERS
- 17 GLUES, SILICONES, CAULK AND INSULATING
- 18 TOOLS AND SECURITY
- 19 FINISHING PRODUCTS AND SHOP SUPPLIES
- 20 COMMERCIAL DISPLAY HARDWARE
- 21 MOLDING, RAILING AND BATHROOM HARDWARE

CCRMUS 2017

Set of 4 Swivel Glass Shelf Supports

- Thickness: 3/16 to 5/16" (5 to 8 mm)

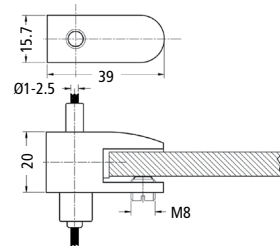
PRODUCT	FINISH	MATERIAL	CAPACITY	QTY/BOX
BP124022175	Brushed Chrome	Zinc Alloy	26.5 lb (12 kg)	1 set



Set of 4 Glass Shelf Supports

- Thickness: 3/16 to 5/16" (5 to 8 mm)

PRODUCT	FINISH	MATERIAL	CAPACITY	QTY/BOX
BP124016175	Brushed Chrome	Zinc Alloy	26.5 lb (12 kg)	1 set



Set of 4 Glass Shelf Supports

- For 6 to 8 mm shelves
- Shelf Thickness: 1/4" to 5/16" (6 to 8 mm)

PRODUCT	FINISH	MATERIAL	CAPACITY	QTY/BOX
BP124305175	Brushed Chrome	Zinc alloy	26.5 lb (12 kg)	1 set



Set of 4 Glass Shelf Supports (without perforation)

- For 6 to 8 mm shelves

PRODUCT	FINISH	MATERIAL	QTY / BOX
BP124311175	Brushed Chrome	Zinc alloy	1 set

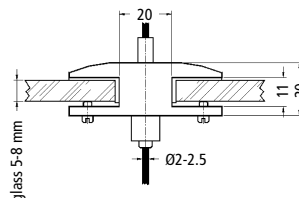


Commercial Display Hardware | Display Systems

Set of 4 Middle Glass Supports

- Thickness: 3/16 to 5/16" (5 to 8 mm)

PRODUCT	FINISH	MATERIAL	CAPACITY	QTY/BOX
BP124013175	Brushed Chrome	Zinc	26.5 lb (12 kg)	1 set

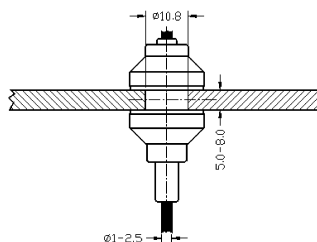


Set of 4 Bored Shelf Supports for Glass

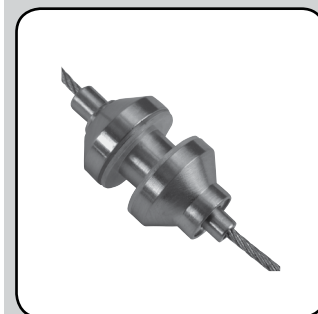
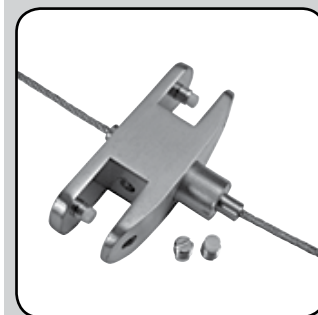
10 mm bored hole.

- Thickness: 3/16 to 5/16" (5 to 8 mm)

PRODUCT	FINISH	MATERIAL	CAPACITY	QTY/BOX
BP124015175	Brushed Chrome	Zinc	26.5 lb (12 kg)	1 set



Richelieu Section 20C



- 1 SCREWS AND FASTENERS
- 2 FURNITURE EQUIPMENT
- 3 HINGES
- 4 SLIDES
- 5 CASTERS AND LEGS
- 6 KITCHEN SOLUTIONS
- 7 CLOSET SOLUTIONS
- 8 LIGHTING SOLUTIONS
- 9 SINKS AND FAUCETS
- 10 OFFICE
- 11 SLIDING DOORS
- 12 GLASS HARDWARE
- 13 PANELS AND SURFACES
- 14 EDGE-BANDING
- 15 CABINET DOORS AND DRAWERS
- 16 CORBELS AND FLOOR REGISTERS
- 17 GLUES, SILICONES, CAULK AND INSULATING
- 18 TOOLS AND SECURITY
- 19 FINISHING PRODUCTS AND SHOP SUPPLIES
- 20 COMMERCIAL DISPLAY HARDWARE
- 21 MOLDING, RAILING AND BATHROOM HARDWARE

NOTES