

Glues, Silicones, Caulk and Insulating

Glues, Adhesives and Accessories

Section 17A



Silicone and Paintable Latex

Section 17D



Cyanoacrylate Products and Accessories

Section 17B



2P-10 Instant Glues

Section 17C



SECTION 17

SCREWS AND FASTENERS	1
FURNITURE EQUIPMENT	2
HINGES	3
SLIDES	4
CASTERS AND LEGS	5
KITCHEN SOLUTIONS	6
CLOSET SOLUTIONS	7
LIGHTING SOLUTIONS	8
SINKS AND FAUCETS	9
OFFICE	10
SLIDING DOORS SYSTEMS	11
GLASS HARDWARE	12
PANELS AND SURFACES	13
EDGEBANDING	14
CABINET DOORS AND DRAWERS	15
CORBELS, FLOOR REGISTERS AND WINE CELLARS	16
GLUES, SILICONES, CAULK AND INSULATING	17
TOOLS AND SECURITY	18
FINISHING PRODUCTS, ABRASIVES AND SHOP SUPPLIES	19
COMMERCIAL DISPLAY HARDWARE	20
MOLDING, RAILING AND BATHROOM PARTITION HARDWARE	21

Glues, Adhesives and Accessories

PVA Glues

White Glue - LIONGRIP 1000

LIONGRIP 1000 is a general purpose woodworking adhesive for general wood assembly and edge gluing of soft and hard wood species.

- Fast gripping action
- Less slippage
- Robust and durable adhesion
- Excellent sandability
- Well suited for roller, brush, and squeeze bottle applications
- Tight and aesthetic glue lines
- Forgiving in production environment
- Less rejects due to adhesive pre-cure
- Good gap filling properties
- Strong wet tack
- 3500 PSI block shear values
- Contains UV fluorescent tracer

Sold by unit

PRODUCT	VOLUME	QTY/BOX
R1000130	1 gal.	4
R1000530	5 gal.	1
R10004530	45 gal.	1

Characteristics

Recommended for: Indoor

Color before Application: White

Open Time Under Pressure: 5 minutes

Dried Film: Translucent

Material: Resin Emulsion

Moisture Resistant Glue - LIONGRIP 2000

LIONGRIP 2000 is a high performance millwork adhesive specifically formulated for applications where Type II water resistant bonds are required. Its viscosity is well suited for automated finger jointers and all roll coaters for flat laminations of veneer or High Pressure laminates (HPL). Also recommended for edge-gluing on Radio Frequency Presses (RF).

- Resilient and moisture resistant bonds
- Fire rated
- 12°C film forming temperature
- Self X- Linking emulsion
- NSF51 certified for food contact
- Easy-clean emulsion
- More forgiving in production environment
- No catalyst required
- Recommended for finger jointing, flush door assembly, hot-Press veneering and RF gluing
- Contains UV fluorescent tracer

Sold by unit

PRODUCT	VOLUME	QTY/BOX
R2000130	1 gal.	4
R2000530	5 gal.	1
R20004530	45 gal.	1

Characteristics

Recommended for: Indoor

Color before Application: White

Open Time Under Pressure: 5 minutes

Dried Film: Translucent

Material: Aliphatic Resin Emulsion

Richelieu Section 17A



Glues, Adhesives and Accessories

PVA Glues

Yellow Glue - LIONGRIP 3000

LIONGRIP 3000 is a general purpose yellow carpenters glue specifically formulated for cabinet and furniture assembly and panel edge gluing.

- Fast gripping action
- Less slippage
- Reduction in clamp times
- Excellent sandability
- Less glue sagging
- Strong wet tack
- Fast drying time
- Very hard glue line
- High viscosity
- Contains UV fluorescent tracer

Sold by unit

PRODUCT	VOLUME	QTY/BOX
R3000111	1 gal.	4
R3000511	5 gal.	1
R30004511	45 gal.	1

Characteristics

Recommended for: Indoor

Color before Application: Yellow

Open Time Under Pressure: 5 minutes

Dried Film: Translucent

Material: Self Cross-Linking Resin Emulsion

High Performance Hardwood Glue - LIONGRIP 5000

LIONGRIP 5000 is a high performance millwork adhesive specially formulated for the manufacturing of edge and faced glued panels where extremely strong and resilient bonds on hardwoods are required.

- Fast gripping action
- Less slippage
- Superior bonds
- More forgiving in production environment
- Superior adhesion characteristics on hard woods
- Better and deeper wood penetration
- Strong wet tack
- Very hard glue line
- 4500 PSI block shear values
- 12°C film forming temperature
- Contains UV fluorescent tracer

Sold by unit

PRODUCT	VOLUME	QTY/BOX
R5000130	1 gal.	4
R5000530	5 gal.	1
R50004530	45 gal.	1

Characteristics

Recommended for: Indoor

Color before Application: White

Open Time Under Pressure: 5 minutes

Dried Film: Translucent

Material: Resin Emulsion

Richelieu Section 17A



1	SCREWS AND FASTENERS
2	FURNITURE EQUIPMENT
3	HINGES
4	SLIDES
5	CASTERS AND LEGS
6	KITCHEN SOLUTIONS
7	CLOSET SOLUTIONS
8	LIGHTING SOLUTIONS
9	SINKS AND FAUCETS
10	OFFICE
11	SLIDING DOORS
12	GLASS HARDWARE
13	PANELS AND SURFACES
14	EDGE-BANDING
15	CABINET DOORS AND DRAWERS
16	CORBELS AND FLOOR REGISTERS
17	GLUES, SILICONES, CAULK AND INSULATING
18	TOOLS AND SECURITY
19	FINISHING PRODUCTS AND SHOP SUPPLIES
20	COMMERCIAL DISPLAY HARDWARE
21	MOLDING, RAILING AND BATHROOM HARDWARE

Glues, Adhesives and Accessories

PVA Glues

Richelieu Section 17A

Titebond III Ultimate Wood Glue

- Waterproof formula that cleans up with water
- Complies with ANSI/HPVA Type I water-resistance standards
- Superior strength
- Strong initial tack
- Longer open assembly time
- Lower application temperature
- Unaffected by finishes
- FDA approved for indirect food contact
- Application: Ideal for wood projects, Indoor and outdoor applications

Sold by unit

PRODUCT	VOLUME	QTY/BOX
15001414	16 oz	12
15001415	32 oz	6
15001416	1 gal.	2
15001417	5 gal.	1
15001418	55 gal.	1

Characteristics

Recommended for: Exterior, Indoor

Color before Application: Havana

Open Assembly Time: 6-10 min.

Open Time Under Pressure: Normal (11-20 min.)

Dried Film: Light Brown

Water Resistant



Titebond II Extend Wood Glue

- Meets ANSI Type II water-resistance standards
- Slower set speed, longer open time
- Hot press and R-F compatible
- Heat and solvent-resistant
- Excellent sandability
- Application: All types of wood, agglomerate, MDF, plywood, and other porous material

Sold by unit

PRODUCT	VOLUME	QTY/BOX
15004136	1 gal.	2
15004137	5 gal.	1

Characteristics

Recommended for: Indoor

Color before Application: Off White

Open Assembly Time: 11-30 min.

Open Time Under Pressure: Very Long (30 min.)

Material: Cross-Linking Polyvinyl Emulsion

Dried Film: White

Slow Drying



Titebond II Fluorescent Wood Glue

- Visible under black light, enabling detection and removal of dried glue before finishing
- Passes ANSI Type II water resistance
- Excellent heat and solvent resistance
- Fast-setting, shortening clamp time
- Ideal for radio frequency (R-F) gluing systems
- Easy cleanup with water
- Application: Bonds wood, hardboard, high pressure laminates, and particleboard

Sold by unit

PRODUCT	VOLUME	QTY/BOX
15002316	1 gal.	2
15002317	5 gal.	1
15002318	55 gal.	1

Characteristics

Recommended for: Indoor, Exterior

Color before Application: Yellow

Open Assembly Time: 6-10 min.

Open Time Under Pressure: Normal (11-20 min.)

Material: Aliphatic Resin Emulsion

Dried Film: Translucent Yellow

Fluorescent



Glues, Adhesives and Accessories

PVA Glues

Titebond II Premium Wood Glue

- First single-component wood glue to meet ANSI Type II water-resistance standards
- Excellent sandability
- Unaffected by finishes
- Ideal for radio frequency (R-F) and hot press gluing systems
- FDA approved for indirect food contact
- Easy clean-up with water
- Application: Ideal for outdoor projects

Sold by unit

PRODUCT	VOLUME	QTY/BOX
15005004	16 oz	12
15005006	1 gal.	2
15005007	5 gal.	1
15005008	55 gal.	1

Characteristics

Recommended for: Exterior, Indoor

Color before Application: Cream

Open Assembly Time: 1-5 min.

Open Time Under Pressure: Normal (11-20 min.)

Material: Cross-Linking Polyvinyl Acetate/Cross-Linking

Dried Film: Clear

Cold-Pressed Glue

Titebond Original Wood Glue

- Fast setting to shorten clamp time
- Bonds stronger than wood
- Excellent heat and solvent resistance
- Excellent sandability
- Unaffected by finishes
- Easy clean-up with water
- Application: All common wood species, particleboard, MDF, plywood, and other porous materials

Sold by unit

PRODUCT	VOLUME	QTY/BOX
15005065	32 oz	6
15005066	1 gal.	2
15005067	5 gal.	1
15005068	55 gal.	1

Characteristics

Recommended for: Indoor

Color before Application: Yellow

Open Assembly Time: 1-5 min.

Material: Aliphatic Resin Emulsion

Dried Film: Clear

General-Use Glue

Titebond White Glue

- Fast setting
- Strong bond
- Excellent heat resistance
- Safe: No solvent vapors
- Non-toxic; cleans up with water
- Dries clear and colorless
- Sets faster than most other white glues
- Application: General woodworking applications, as well as many other porous and semi-porous materials

Sold by unit

PRODUCT	VOLUME	QTY/BOX
150015026	1 gal.	2
15005027	5 gal.	1
15005028	55 gal.	1

Characteristics

Recommended for: Indoor

Color before Application: White

Open Assembly Time: 1-5 min.

Dried Film: Clear

General-Use Glue

Richelieu Section 17A



- 1 SCREWS AND FASTENERS
- 2 FURNITURE EQUIPMENT
- 3 HINGES
- 4 SLIDES
- 5 CASTERS AND LEGS
- 6 KITCHEN SOLUTIONS
- 7 CLOSET SOLUTIONS
- 8 LIGHTING SOLUTIONS
- 9 SINKS AND FAUCETS
- 10 OFFICE
- 11 SLIDING DOORS
- 12 GLASS HARDWARE
- 13 PANELS AND SURFACES
- 14 EDGE-BANDING
- 15 CABINET DOORS AND DRAWERS
- 16 CORBELS AND FLOOR REGISTERS
- 17 GLUES, SILICONES, CAULK AND INSULATING
- 18 TOOLS AND SECURITY
- 19 FINISHING PRODUCTS AND SHOP SUPPLIES
- 20 COMMERCIAL DISPLAY HARDWARE
- 21 MOLDING, RAILING AND BATHROOM HARDWARE

CCRMUS 2017

Glues, Adhesives and Accessories

PVA Glues

Titebond Molding and Trim Wood Glue

Bonds most porous and semi-porous materials. An extra-thick formula helps fill small cracks and gaps.

- No runs, no drips
- Strong initial tack
- Excellent sandability
- Easy cleanup with water
- Nonflammable
- No offensive odor
- Application: Use with porous and semi-porous materials. Ideal for finish trim, crown molding, baseboards, window casings, and other applications requiring a professional-strength, no-run wood glue

Sold by unit

PRODUCT	VOLUME	QTY/BOX
15002404	16 oz	12

Characteristics

Recommended for: Indoor
Color before Application: Havana
Open Assembly Time: 1-5 min.
Open Time Under Pressure: Short (5-10 min.)
Material: Thixotropic Polyvinyl Acetate
Dried Film: Beige
 Water Resistant, Cold-Pressed Glue



Titebond Liquid Hide Wood Glue

- Ready-to-use form
- Ideal for fine furniture repair
- Excellent sandability
- Unaffected by finishes
- Excellent creep-resistance
- Can be used to create a "crackling effect" on wood
- Slow set allows precise assembly
- Application: Disassembly of parts, antique restoration, or repair of musical instruments

Sold by unit

PRODUCT	VOLUME	QTY/BOX
15005014	16 oz	12

Characteristics

Recommended for: Indoor
Color before Application: Cream
Open Assembly Time: 6-10 min.
Open Time Under Pressure: Normal (11-20 min.)
Material: Natural Protein Emulsion
Dried Film: Clear
 Ideal for Fine Furniture Repair



Titebond Dark Wood Glue

- Meets ANSI Type II water-resistance standards
- Designed for interior and exterior applications
- Excellent sandability
- Unaffected by finishes
- Ideal for radio frequency (R-F) gluing systems
- Easy clean-up with water
- Application: Ideal for wood, hardboard, particleboard, leather, cloth, and most other porous materials

Sold by unit

PRODUCT	VOLUME	QTY/BOX
15003706	1 gal.	2

Characteristics

Recommended for: Indoor
Color before Application: Brown
Open Assembly Time: 1-5 min.
Open Time Under Pressure: Very Long (30 min.)
Material: Aliphatic Resin Emulsion
Dried Film: Light Brown
 Water Resistant



Richelieu Section 17A

Glues, Adhesives and Accessories

PVA Glues

Titebond Doweling Glue L.V.

- Very low viscosity for better flow
- Excellent flow characteristics
- Dries translucent
- Excellent strength
- Fast setting
- Easy to clean with water
- Application: Use on solid woods, particleboard, MDF, plywood, and other porous materials

Sold by unit

PRODUCT	VOLUME	QTY/BOX
15003817	5 gal.	1

Characteristics

Recommended for: Indoor
Color before Application: White
Open Assembly Time: 1-5 min.
Material: Aliphatic Resin Emulsion
Dried Film: Clear
 Dowel Glue

Titebond Melamine Glue

- Bonds melamine, vinyl coated products, and HPL to porous materials
- Thicker formulation: Fewer runs and drips
- Fast-setting
- Excellent strength
- Dries clear
- Long open time
- Fast initial tack
- Application: Bonding wood, particleboard, MDF and other porous substrates to synthetic materials such as melamine, vinyl, HPL and metals

Sold by unit

PRODUCT	VOLUME	QTY/BOX
15004014	16 oz	12
15004016	1 gal.	2
15004017	5 gal.	1

Characteristics

Recommended for: Indoor
Color before Application: White
Open Assembly Time: 11-30 min.
Material: Specialized Vinyl Acetate Emulsion
Dried Film: Clear

Titebond Cold Press HPL

- Moderate set speed
 - Economical alternative to contact cement
 - Suitable for large-scale flat laminating
 - Dries translucent
 - Non-toxic, cleans up with water
 - Suitable for panel-on-frame cold press applications
 - Application: Specifically formulated for cold press laminating of High Pressure Laminates and backed veneers to solid woods, particleboard, MDF, plywood, and other porous materials.
- Also suitable for most veneer and panel-on-frame applications

Sold by unit

PRODUCT	VOLUME	QTY/BOX
15004617	5 gal.	1
15004618	55 gal.	1

Characteristics

Recommended for: Indoor
Color before Application: White
Open Assembly Time: 11-30 min.
Material: Polyvinyl Acetate Emulsion
Dried Film: Clear
 Cold-Pressed Glue

Richelieu Section 17A



- 1 SCREWS AND FASTENERS
- 2 FURNITURE EQUIPMENT
- 3 HINGES
- 4 SLIDES
- 5 CASTERS AND LEGS
- 6 KITCHEN SOLUTIONS
- 7 CLOSET SOLUTIONS
- 8 LIGHTING SOLUTIONS
- 9 SINKS AND FAUCETS
- 10 OFFICE
- 11 SLIDING DOORS
- 12 GLASS HARDWARE
- 13 PANELS AND SURFACES
- 14 EDGE-BANDING
- 15 CABINET DOORS AND DRAWERS
- 16 CORBELS AND FLOOR REGISTERS
- 17 GLUES, SILICONES, CAULK AND INSULATING
- 18 TOOLS AND SECURITY
- 19 FINISHING PRODUCTS AND SHOP SUPPLIES
- 20 COMMERCIAL DISPLAY HARDWARE
- 21 MOLDING, RAILING AND BATHROOM HARDWARE

CCRMUS 2017

Glues, Adhesives and Accessories

PVA Glues

Titebond Doweling Glue

- Excellent strength
- Fast-setting
- Low viscosity for better flow
- Dries translucent
- Application: For use on solid woods, particleboard, MDF, plywood, and other porous materials

Sold by unit

PRODUCT	VOLUME	QTY/BOX
15002207	5 gal.	1

Characteristics

Recommended for: Indoor

Color before Application: White

Open Assembly Time: 1-5 min.

Open Time Under Pressure: Short (5-10 min.)

Dried Film: Clear

Dowel Glue

Richelieu Section 17A



Titebond Super Wood Glue

- Firm, strong bond
- Excellent heat-resistance
- Longer working time
- Easily sanded
- Easy cleanup with water
- Application: Ideal choice for edge and face gluing as well as other woodworking operations

Sold by unit

PRODUCT	VOLUME	QTY/BOX
15005077	5 gal.	1

Characteristics

Recommended for: Indoor

Color before Application: White

Open Assembly Time: 1-5 min.

Material: Aliphatic Resin Emulsion

Dried Film: Clear

Cold-Pressed Glue



Titebond Cold Press for Veneer

- Economical alternative to contact cement
- Formulated to minimize bleed-through
- Moderate set speed
- No harmful vapors
- Safe, nonflammable
- Application: Formulated for cold press laminating of wood to solid woods, particleboard, MDF, plywood and other porous materials

Sold by unit

PRODUCT	VOLUME	QTY/BOX
15005176	1 gal.	2
15005177	5 gal.	1

Characteristics

Recommended for: Indoor

Color before Application: Havana

Open Assembly Time: 11-30 min.

Open Time Under Pressure: Normal (11-20 min.)

Material: Polyvinyl Acetate Emulsion

Dried Film: Light Brown

Cold-Pressed Glue



Glues, Adhesives and Accessories

PVA Glues

Titebond Extend Wood Glue

- Slower set speed for longer working time
- Excellent heat resistance
- Non-toxic, cleans up with water
- Application: All common species of wood, particleboard, MDF, plywood and other porous materials. Ideal for complex assemblies and bent laminations

Sold by unit

PRODUCT	VOLUME	QTY/BOX
15009106	1 gal.	2
15009107	5 gal.	1

Characteristics

Recommended for: Indoor

Color before Application: Yellow

Open Assembly Time: 11-30 min.

Material: Aliphatic Resin Emulsion

Dried Film: Yellow

Slow Drying

Titebond Carpenter's Glue

- Application: Can be used on a variety of materials including paper, leather, hardboard, particleboard, high-pressure laminates and many other porous and semi-porous surfaces

Sold by unit

PRODUCT	VOLUME	QTY/BOX
15002826	1 gal.	2
15002827	5 gal.	1

Characteristics

Recommended for: Indoor

Color before Application: Yellow

Open Assembly Time: 1-5 min.

Material: Polyvinyl Acetate

Dried Film: Clear

Resists Heat and Solvents

DAP Weldwood Yellow Carpenter's Wood Glue

- Professional quality aliphatic resin wood and multi-purpose glue providing a high-strength bond

PRODUCT	QTY/BOX
GLU493	1

Richelieu Section 17A



- 1 SCREWS AND FASTENERS
- 2 FURNITURE EQUIPMENT
- 3 HINGES
- 4 SLIDES
- 5 CASTERS AND LEGS
- 6 KITCHEN SOLUTIONS
- 7 CLOSET SOLUTIONS
- 8 LIGHTING SOLUTIONS
- 9 SINKS AND FAUCETS
- 10 OFFICE
- 11 SLIDING DOORS
- 12 GLASS HARDWARE
- 13 PANELS AND SURFACES
- 14 EDGE-BANDING
- 15 CABINET DOORS AND DRAWERS
- 16 CORBELS AND FLOOR REGISTERS
- 17 GLUES, SILICONES, CAULK AND INSULATING
- 18 TOOLS AND SECURITY
- 19 FINISHING PRODUCTS AND SHOP SUPPLIES
- 20 COMMERCIAL DISPLAY HARDWARE
- 21 MOLDING, RAILING AND BATHROOM HARDWARE

Glues, Adhesives and Accessories

Contact Glues

Titebond Post-Forming Neoprene Plus

Titebond Post-forming Neoprene Plus contact cement is a high-quality, fast-drying, heat-resistant adhesive that allows post-forming. It creates an immediate strong bond that permits immediate machining. Titebond Neoprene Plus Contact Cement is environmentally-friendly and contains no ozone-depleting chemicals. Unlike solvent-based contact cements, it is nonflammable, VOC compliant, has no offensive odor, and cleans up with water. Neoprene Plus is the ideal choice in response to local fire codes, insurance requirements, and general risk of fire.

- Application: Bonds decorative plastic laminates and veneers, hardboard, leather, rubber, and flexible metal to most common building materials

Sold by unit

PRODUCT	VOLUME	QTY/BOX
15003556	1 gal.	2
15003557	5 gal.	1

Characteristics

Special Characteristics: Non-Flammable

Color: Clear

DAP Weldwood Contact Cement – Non Flammable

- High solids polychroprene, waterbased contact cement that meets stringent requirements
- Water resistant when dry

PRODUCT	QTY/BOX
GLU25336	1

Water-Based Contact Cement – LIONGRIP R500

LIONGRIP R500 is a water-based, high-solids contact cement low in VOCs.

- Ideal for postforming high-pressure laminate
- Non-flammable
- Strong initial tack
- High bond strength
- High solids
- Resistant to high temperatures
- Strongly resistant to tearing and shearing

Important Information(s):

The low VOC content conforms to use in OTC (Ozone Transport Commission) states. R500 is certified GreenGuard, allowing its use in all LEED-certified projects.

- Application: LIONGRIP R500 water-based contact glue is an excellent choice for permanent bonding applications. This product can be sprayed or applied by brush or roller

- Plastic laminate, Drywall, Metals (excluding copper), Wood
To clean excess glue, use hot soapy water

Sold by unit

PRODUCT	COLOR	VOLUME	QTY/BOX
R500411L	Natural	1 gal.	2
R500471L	Green	1 gal.	1
R5002011L	Natural	5 gal.	1
R5002071L	Green	5 gal.	1

Characteristics

Special Characteristics: Low VOC – Less than 250 grams per liter, High Solids, Non-Flammable

Solid Content (approx.): 51%

Viscosity: 600 cps

Flash Point: None

Dry Time: 30 minutes

Open Time: 60 minutes

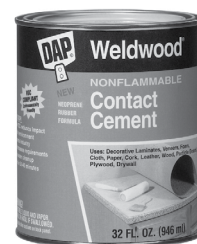
Recommended Coverage: 335 sq. ft. per gallon

Product Density: 9.1 lb per gallon

Neoprene

VOC Concentration (EPA Method 24): 53 grams per liter

Richelieu Section 17A



Glues, Adhesives and Accessories

Contact Glues

Brush/Roller Grade Contact Cement – LIONGRIP R505

LIONGRIP R505 is a high-temperature contact cement particularly suitable for environments where climatic conditions and ambient temperatures normally make bonding difficult.

- Dries quickly
- Long open time
- Strong initial tack
- High bond strength
- Resistant to high temperatures
- Multipurpose
- Application: Decorative laminate, Plywood, Chipboard, Metals (excluding copper), Wood, Leather, Polyurethane foam, Hard plastics
- To clean excess glue, use LIONGRIP cleaner RS02020

Sold by unit

PRODUCT	VOLUME	QTY/BOX
R505411L	1 gal.	2
R5052011L	5 gal.	1

Characteristics

Special Characteristics: Flammable
Solvent: Blend of Hydrocarbons and Ketones
Color: Natural
Solid Content (approx.): 21%
Viscosity: 1200 cps
Flash Point: -20 °C (-4 °F)
Dry Time: 5 to 10 minutes
Open Time: 60 minutes
Recommended Coverage: 210 sq. ft per gallon
Product Density: 6.9 lb per gallon
 Neoprene
VOC Concentration (EPA Method 24): 602 grams per liter

High-Solids, Low-VOC Contact Cement – LIONGRIP R250

LIONGRIP R250 is a unique high-solids contact glue can be used to adhere high-pressure laminates.

- Non-flammable
- Quick drying
- Strong initial tack
- High bond strength
- Low VOC
- High solids
- Resistant to high temperatures
- Can be sprayed or applied by brush or roller
- Application: Plastic laminates, Insulation, Metals, Wood, Polyurethane foam, Fabrics, Some automobile trim materials
- To clean excess glue, use LIONGRIP cleaner RS02020

Important Information(s):

The low VOC content conforms to use in OTC (Ozone Transport Commission) states. R250 is certified GreenGuard, allowing its use in all LEED-certified projects.

Sold by unit

PRODUCT	COLOR	VOLUME	QTY/BOX
R2502011L	Natural	5 gal.	1
R2502080L	Red	5 gal.	1
R2505411L	Natural	54 gal.	1
R2505480L	Red	54 gal.	1

Characteristics

Special Characteristics: Flammable, High Solids, Low VOC
 – Less than 250 grams per liter
Solvent: Blend of Hydrocarbons and Ketones
Solid Content (approx.): 36%
Viscosity: 120 cps
Flash Point: -29 °C (-20 °F)
Dry Time: 4 to 6 minutes
Open Time: 60 minutes
Recommended Coverage: 275 sq. ft. per gallon
Product Density: 7.5 lb per gallon
 Synthetic Rubber
VOC Concentration (EPA Method 24): 241 grams per liter

Richelieu Section 17A



- 1 SCREWS AND FASTENERS
- 2 FURNITURE EQUIPMENT
- 3 HINGES
- 4 SLIDES
- 5 CASTERS AND LEGS
- 6 KITCHEN SOLUTIONS
- 7 CLOSET SOLUTIONS
- 8 LIGHTING SOLUTIONS
- 9 SINKS AND FAUCETS
- 10 OFFICE
- 11 SLIDING DOORS
- 12 GLASS HARDWARE
- 13 PANELS AND SURFACES
- 14 EDGE-BANDING
- 15 CABINET DOORS AND DRAWERS
- 16 CORBELS AND FLOOR REGISTERS
- 17 GLUES, SILICONES, CAULK AND INSULATING
- 18 TOOLS AND SECURITY
- 19 FINISHING PRODUCTS AND SHOP SUPPLIES
- 20 COMMERCIAL DISPLAY HARDWARE
- 21 MOLDING, RAILING AND BATHROOM HARDWARE

Glues, Adhesives and Accessories

Contact Glues

High-Performance Spray Grade Contact Cement – LIONGRIP R517

- Can be postformed
- Dries rapidly
- High open time
- Resistant to high temperatures
- Highly resistant to tearing and shearing
- Waterproof
- Flexible
- Application: Plastic laminate, Decorative laminate, Drywall, Edgebanding, Veneer, Metals (excluding copper), Wood, Fiberglass, Polyurethane foam, Rigid plastics
- To clean excess glue, use LIONGRIP cleaner RS02020L

Sold by unit

PRODUCT	COLOR	VOLUME	QTY/BOX
R5172011L	Natural	5 gal.	1
R5172080L	Red	5 gal.	1
R5175411L	Natural	54 gal.	1
R5175480L	Red	54 gal.	1

Characteristics

Special Characteristics: Flammable, Postforming

Solvent: Blend of Hydrocarbons and Ketones

Solid Content (approx.): 18.5%

Viscosity: 175 cps

Flash Point: -29 °C (-20 °F)

Dry Time: 3 to 5 minutes

Open Time: 60 minutes

Recommended Coverage: 155 sq. ft per gallon

Product Density: 6.6 lb per gallon

Neoprene

VOC Concentration (EPA Method 24): 599 grams per liter

Richelieu Section 17A



High-Heat-Resistant Contact Cement – LIONGRIP R570

- No VOCs
- Non-flammable
- Quick drying
- Long open time
- High initial tack
- Resistant to high temperatures
- Sprays easily

Important Information(s):

Zero-VOC rating conforms to use in OTC (Ozone Transport Commission) states. R570 is GreenGuard certified, permitting use in all LEED-certified projects.

- Application: Decorative laminates, Plywood and Metals (excluding copper), Polyurethane foam, Rigid plastics, Expanded polystyrene (by dry spraying)
- To clean excess glue, use Lion Grip cleaner RS02020L

Sold by unit

PRODUCT	COLOR	VOLUME	QTY/BOX
R5702080L	Red	5 gal.	1
R5702011L	Natural	5 gal.	1
R5705411L	Natural	54 gal.	1

Characteristics

Special Characteristics: Non-Flammable, GREEN Product

Solvent: Dichloromethane

Solid Content (approx.): 26%

Viscosity: 350 cps

Flash Point: None

Dry Time: 2 to 5 minutes

Open Time: 30 minutes

Recommended Coverage: 225 sq. ft. per gallon

Product Density: 10.1 lb per gallon

Synthetic Rubber

VOC Concentration (EPA Method 24): 0 grams per liter



Glues, Adhesives and Accessories

Contact Glues

High Strength Low VOC Adhesive Spray – LIONGRIP R013

This glue is a low VOC contact adhesive, packaged in a convenient and easy to use canister.

- Excellent heat resistance
- Easy to use
- Low VOC
- Uniform coverage
- Portability
- Application: Particleboard, Laminates, Plywood, Hardwood, Leather, Rubber, Metal, Etc
- To clean excess glue, use LIONGRIP cleaner RS02020

Sold by unit

PRODUCT	PACKING	WEIGHT	COLOR	QTY/BOX
R01313C	Aerosol	13 oz	Clear	1
R01323C	Canister	23 lb	Clear	1
R01323R	Canister	23 lb	Red	1
R013124C	Canister	124 lb	Clear	1
R013124R	Canister	124 lb	Red	1
R013252C	Canister	252 lb	Clear	1
R013252R	Canister	252 lb	Red	1

Characteristics

Dry Time: 2 to 3 minutes

Open Time: 30 minutes

VOC Concentration

(EPA Method 24): 141.5 grams per liter

Flash Point: -25 °C (-13 °F)

Special Characteristics:
GREEN Product

High-Temperature, High-Strength Adhesive – LIONGRIP R015

This glue provides high tack, excellent contactability, and green strength provide uniform, high-strength bonds under a wide variety of laminating conditions.

- OTC qualifies for LEED, NC and CI EQ Credit 4.4: Laminating adhesives shall contain no urea formaldehyde resins
- Fast drying
- Easy to use
- High heat resistance
- High performance
- Application: Particleboard, Laminates, Plywood, Hardwood, Leather, Rubber, Metal
- To clean excess glue, use LIONGRIP cleaner RS02020L

Sold by unit

PRODUCT	PACKING	WEIGHT	COLOR	QTY/BOX
R01516C	Aerosol	16 oz	Clear	1
R01511C	Canister	11 lb	Clear	1
R01511R	Canister	11 lb	Red	1
R01538C	Canister	38 lb	Clear	1
R01538R	Canister	38 lb	Red	1
R015177C	Canister	177 lb	Clear	1
R015177R	Canister	177 lb	Red	1
R015355C	Canister	355 lb	Clear	1
R015355R	Canister	355 lb	Red	1

Characteristics

Special Characteristics: High Heat Resistance

Solvent: Hydrocarbon Propellant, Methylene Chloride

Flash Point: -104 °C (-156 °F)

Dry Time: 2 to 3 minutes

Open Time: 30 minutes

Solvent

VOC Concentration (EPA

Method 24): 426 grams per liter

Richelieu Section 17A



- 1 SCREWS AND FASTENERS
- 2 FURNITURE EQUIPMENT
- 3 HINGES
- 4 SLIDES
- 5 CASTERS AND LEGS
- 6 KITCHEN SOLUTIONS
- 7 CLOSET SOLUTIONS
- 8 LIGHTING SOLUTIONS
- 9 SINKS AND FAUCETS
- 10 OFFICE
- 11 SLIDING DOORS
- 12 GLASS HARDWARE
- 13 PANELS AND SURFACES
- 14 EDGE-BANDING
- 15 CABINET DOORS AND DRAWERS
- 16 CORBELS AND FLOOR REGISTERS
- 17 GLUES, SILICONES, CAULK AND INSULATING
- 18 TOOLS AND SECURITY
- 19 FINISHING PRODUCTS AND SHOP SUPPLIES
- 20 COMMERCIAL DISPLAY HARDWARE
- 21 MOLDING, RAILING AND BATHROOM HARDWARE

Glues, Adhesives and Accessories

Contact Glues

High Temperature and Non-Methylene Chloride Adhesive Spray – LIONGRIP R051

- High heat resistance
- Fast drying
- Excellent room temperature contactability in a portable system
- Easy to use
- Uniform coverage
- Portability
- Application: Particleboard, Laminates, Plywood, Hardwood, Leather, Rubber, Metal, Etc
- To clean excess glue, use LIONGRIP cleaner RS02020

Sold by unit

PRODUCT	PACKING	WEIGHT	QTY/BOX
R05138C	Canister	38 lb	1
R051177C	Canister	177 lb	1
R051355C	Canister	355 lb	1

Characteristics

Special Characteristics: High Heat Resistance

Color: Clear

Flash Point: -91.29 °C (-132.32 °F)

Dry Time: 2 to 3 minutes

Open Time: 30 minutes

VOC Concentration (EPA Method 24): 732 grams per liter

High-Temperature Adhesive Spray – LIONGRIP R661

- Easy to use
- High heat resistance
- High performance
- Application: Particleboard, Laminates, Plywood, Hardwood, Leather, Rubber, Metal
- To clean excess glue, use LIONGRIP cleaner RS02020

Sold by unit

PRODUCT	PACKING	WEIGHT	COLOR	QTY/BOX
R66130C	Canister	30 lb	Clear	1
R66130R	Canister	30 lb	Red	1
R661300C	Canister	300 lb	Clear	1
R661300R	Canister	300 lb	Red	1
R661140C	Canister	140 lb	Clear	1
R661140R	Canister	140 lb	Red	1

Characteristics

Flash Point: -25 °C (-13 °F)

Dry Time: 3 to 5 minutes

Open Time: 30 minutes

Solvent

VOC Concentration (EPA Method 24): 651 grams per liter

Non-Flammable Adhesive Spray – LIONGRIP R004NF

- Easy to use
- Excellent heat resistance
- Non-flammable
- Uniform coverage
- Portability
- Application: Particleboard, Laminates, Plywood, Hardwood, Leather, Rubber, Metal, Etc
- To clean excess glue, use LIONGRIP cleaner RS02020

Sold by unit

PRODUCT	PACKING	WEIGHT	COLOR	QTY/BOX
R004NF35C	Canister	35 lb	Clear	1
R004NF35R	Canister	35 lb	Red	1
R004NF162C	Canister	162 lb	Clear	1
R004NF162R	Canister	162 lb	Red	1
R004NF326C	Canister	326 lb	Clear	1
R004NF326R	Canister	326 lb	Red	1

Characteristics

Special Characteristics: Non-Flammable

Dry Time: 3 to 5 minutes

Open Time: 60 minutes

VOC Concentration (EPA Method 24): 23.5 grams per liter

Richelieu Section 17A



Glues, Adhesives and Accessories

Contact Glues

Non-Flammable Adhesive Spray with Compressed Air System – LIONGRIP R980NF

- Easy to use
- Excellent heat resistance
- Non-flammable
- Uniform coverage
- Portability
- Application: Particleboard, Laminates, Plywood, Hardwood, Leather, Rubber, Metal, Etc
- To clean excess glue, use LIONGRIP cleaner RS02020

Sold by unit

PRODUCT	PACKING	WEIGHT	COLOR	QTY/BOX
R980NF28C	Canister	28 lb	Clear	1
R980NF28R	Canister	28 lb	Red	1
R980NF117C	Canister	117 lb	Clear	1
R980NF117R	Canister	117 lb	Red	1
R980NF235C	Canister	235 lb	Clear	1

EPS Spray Adhesive – LIONGRIP R023

- Fast drying
- Easy to use
- Excellent heat resistance
- Uniform coverage
- Portability
- Application: Designed for use with laminates. To clean excess adhesive, use LIONGRIP cleaner RS02020

Sold by unit

PRODUCT	PACKING	VOLUME	QTY/BOX
R02330C	Canister	30 lb	1
R02411C	Canister	30 lb	1
R02438C	Canister	30 lb	1
R024177C	Canister	30 lb	1

Characteristics

Color: Natural

Dry Time: 2 to 3 minutes

Open Time: 30 minutes

Recommended Coverage: 1275 sq. ft. per 30 lb canister

VOC Concentration (EPA Method 24): 245 grams per liter

3M Hi-Strength 90 Spray Adhesive

- High-strength bonding for decorative laminate
- One-minute drying time
- Adjustable spray pattern
- Our most popular aerosol product
- Application: Most woods, Particleboard, SBR rubber, decorative laminate, many plastics including polyethylene, metal

Sold by unit

PRODUCT	VOLUME	QTY/BOX
20232	24 oz	12

Characteristics

Special Characteristics: Flammable

Solvent: Polychloroprene

Color: Clear

Solvent

Richelieu Section 17A



1
SCREWS
AND
FASTENERS

2
FURNITURE
EQUIPMENT

3
HINGES

4
SLIDES

5
CASTERS
AND LEGS

6
KITCHEN
SOLUTIONS

7
CLOSET
SOLUTIONS

8
LIGHTING
SOLUTIONS

9
SINKS
AND
FAUCETS

10
OFFICE

11
SLIDING
DOORS

12
GLASS
HARDWARE

13
PANELS
AND
SURFACES

14
EDGE-
BANDING

15
CABINET
DOORS
AND
DRAWERS

16
CORBELS
AND FLOOR
REGISTERS

17
GLUES,
SILICONES,
CAULK AND
INSULATING

18
TOOLS
AND
SECURITY

19
FINISHING
PRODUCTS
AND SHOP
SUPPLIES

20
COMMERCIAL
DISPLAY
HARDWARE

21
MOLDING,
RAILING AND
BATHROOM
HARDWARE

CCRMUS 2017

Glues, Adhesives and Accessories

Contact Glues – Accessories

Richelieu Section 17A

Westech Glue Flat Spray Nozzle

Spray tip with a flat fan spray, tapered toward the edges. This allows adjacent spray tips and provide uniform coverage across the total sprayed width.

Sold by unit

PRODUCT	FINISH	SPRAY ANGLE	CAPACITY (GPM)	QTY/BOX
TPU9501	Brass	95°	0.10	1
TIP6501	n/a	65°	1	1
TIP80015E	Brass	80°	1.5	1

Adjustable Flow Spray Gun for Glue Canisters

Adjustable flow spray gun for glue canisters.

Important Information(s):

We recommend that you use the 6 ft hose WSB06, 9 ft WSB09, 12 ft WSB12 or the 25 ft hose WSB25.

Sold by unit

PRODUCT	QTY/BOX
AA23L45885	1

Characteristics

Pressure (psi): 250
Capacity (gpm): 0.7
Inlet Connection: 1/4"
Length: 6"
Width: 1-1/16"
Height: 7-1/4"

Hoses

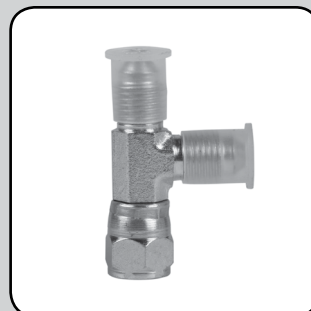
Sold by unit

PRODUCT	LENGTH	QTY/BOX
WSB06	6'	1
WSB09	9'	1
WSB12	12'	1
WSB18	18'	1
WSB25	25'	1

T-Fitting for Two Flow Spray Guns

Sold by unit

PRODUCT	QTY/BOX
TFIT2GUNS	1



Glues, Adhesives and Accessories

Liquid Polyurethane Glues

Titebond Polyurethane Liquid Glue

- 100% waterproof (passes ANSI Type I and II water-resistance testing)
- Bonds virtually everything
- Epoxy-like strength with no mixing
- Short clamp and fast cure
- Excellent sandability
- 100% solids
- Solvent-free
- Application: Ideal for metals, ceramics, most plastics, HPL, Gibraltar stone and other porous and non-porous materials

Sold by unit

PRODUCT	VOLUME	QTY/BOX
15002303	237 ml	12
15002300	355 ml	12

Characteristics

Finish: Brown

Material: Polyurethane

Foams when Drying: No

Special Application: Humidity Resistant

Working time: 20 minutes

Clamp time: 45 minutes

Titebond Solvent Free Construction Adhesive

- Environmentally safe, contains no solvents
- Cleans easily with water in wet state
- Highly water-resistant when dry
- Offers freeze/thaw stability
- Exceeds the requirements of the APA's AFG-01 specification and ASTM C557
- Nonflammable
- Emits no harmful fumes
- Application: Bonds wood, paneling, plywood, wet and frozen lumber, metal, plastics, and more

Sold by unit

PRODUCT	VOLUME	QTY/BOX
15007471	10.5 oz	12
15007472	29 oz	12

Characteristics

Finish: Beige

Material: Polymer

Foams when Drying: No

Special Application: Humidity Resistant

Richelieu Section 17A



- 1 SCREWS AND FASTENERS
- 2 FURNITURE EQUIPMENT
- 3 HINGES
- 4 SLIDES
- 5 CASTERS AND LEGS
- 6 KITCHEN SOLUTIONS
- 7 CLOSET SOLUTIONS
- 8 LIGHTING SOLUTIONS
- 9 SINKS AND FAUCETS
- 10 OFFICE
- 11 SLIDING DOORS
- 12 GLASS HARDWARE
- 13 PANELS AND SURFACES
- 14 EDGE-BANDING
- 15 CABINET DOORS AND DRAWERS
- 16 CORBELS AND FLOOR REGISTERS
- 17 GLUES, SILICONES, CAULK AND INSULATING
- 18 TOOLS AND SECURITY
- 19 FINISHING PRODUCTS AND SHOP SUPPLIES
- 20 COMMERCIAL DISPLAY HARDWARE
- 21 MOLDING, RAILING AND BATHROOM HARDWARE

CCRMUS 2017

Glues, Adhesives and Accessories

Edgebanding Glues

Kleiberit 782.0

Hot-melt glue cartridges for automatic edgebander.

- Increased flow capacity
- Trouble-free melting without any residue
- Film protects against dust and keeps the cartridge from deformation
- No melting problems
- High-flow glue

Important Information(s):

Do not remove the protective film before putting the cartridge in the edgebander.

- Application: Polyester and decorative laminate edges, Veneer and solid wood edges, Synthetic resin edges, PVC and ABS edges

Sold by unit

PRODUCT	FINISH	WEIGHT	QTY/BOX
78211	Natural	15 kg	45

Characteristics

Volume: Cartridges

Material: EVA Copolymer

Line Speed: 8-20 m/min

Working Temperature: 200-220 °C

For Thick PVC or ABS Edgebanding

EVA Copolymer

Jowatherm Hot Melt Glue Cartridge

Medium-viscosity hot melt cartridge with high heat resistance and good cold flexibility. Excellent color and heat stability.

- Application: Hot melt for automatic edgebanding. Suitable for solid wood, veneer, primed HPL, PVC and resinated paper edgebands

Sold by unit

PRODUCT	FINISH	WEIGHT	QTY/BOX
JW28630	Natural	26 lb	48
JW28680	Natural	35 lb	48
JW28681	White	35 lb	48
JW2886244	Brown	44 lb	48
JW28683	Black	26 lb	48

Characteristics

Volume: Cartridges

Material: EVA Copolymer

Line Speed: 18-60 m/min

Working Temperature: 180-200 °C

For Thick PVC or ABS Edgebanding

EVA Copolymer

Directions for use

– Application temperature: 180-200 °C (356-392 °F)

– Feed Speed: Roller application: 18-60 m/min (50-180 ft/min)

– Nozzle application: 10-40 m/min (30-120 ft/min)

Kleiberit 773.3

Thermoplastic artificial resin adhesive for use with edgebanding machines.

- Excellent dosing
- High-strength
- No fillers
- Good melting properties
- Application: Bonding polyester edges, CPL and melamine resin edges, PVC and ABS edges, uncompressed resin-impregnated paper edges, veneer and plastic edges with machining centers

Sold by unit

PRODUCT	FINISH	WEIGHT	QTY/BOX
773311	Clear Amber	20 kg	Bag

Characteristics

Volume: Granular

Material: Thermoplastic Resin

Line Speed: 10-30 m/min

Working Temperature: 180-200 °C

For Thick PVC or ABS Edgebanding

EVA Copolymer

Richelieu Section 17A



Glues, Adhesives and Accessories

Edgebanding Glues

Kleiberit 779.6

Thermoplastic synthetic resin adhesive for bonding and pre-coating edges.

- Suitable for pre-coating of edges
- Universal application
- Good re-melting properties
- Application: Polyester edges, Melamine resin edges, PVC and ABS edge backs, Uncompressed resin-impregnated paper edgebanding, Solid wood and multi-layered veneer edgebanding

Sold by unit

PRODUCT	FINISH	WEIGHT	QTY/BOX
77911	Natural	25 kg	Bag

Characteristics

Volume: Granular

Material: EVA Copolymer

Line Speed: 20-40 m/min

Working Temperature: 200-210 °C

For Thick PVC or ABS Edgebanding

EVA Copolymer

ClearMelt High-Viscosity Hot Melt

- High heat resistance and good cold flexibility
- Excellent color and heat stability
- Application: Automatic edgebanding, solid wood, veneer, PVC and resinated paper edgebands, also suitable for softforming applications

Directions for use:

- Application temperature: 190-210 °C (374-410 °F)
- Feed speed: Roller application: 18-60 m/min (50-180 ft/min)
- Nozzle application: 10-40 m/min (30-120 ft/min)

Sold by unit

PRODUCT	WEIGHT	WORKING TEMPERATURE	QTY/BOX
JW2803044	44 lb	180-200 °C	Bag
JW2809044	44 lb	190-210 °C	Bag

Characteristics

Volume: Granular

Material: EVA Copolymer

Line Speed: 18-60 m/min

For Thick PVC or ABS Edgebanding

Finish: Clear

EVA Copolymer

Low-Viscosity Granular Edgebanding Hot Melt

- Fast melting properties
- Long open time
- Good color and heat stability
- Application: Contour edgebanding of PVC, paper and polyester at low application temperatures and at very slow feed speeds, also suitable for softforming PVC edges

Sold by unit

PRODUCT	WEIGHT	QTY/BOX
JW2822044	44 lb	Bag

Characteristics

Material: EVA Copolymer

Line Speed: 5-20 m/min

Working Temperature: 130-160 °C

For Thick PVC or ABS Edgebanding

Finish: Natural

EVA Copolymer

Medium-High Viscosity Granular Edgebanding Hot Melt

- Economical with good color and heat stability
- Application: Edgebanding veneer, solid wood, resin-impregnated paper, PVC, ABS, and primed HPL, can also be used for precoating and softforming applications
- Good moistening and adhesive properties

Directions for use:

- Application temperature: 190-210 °C (374-410 °F)
- Feed speed: 12-60 m/min (30-120 ft/min)

Sold by unit

PRODUCT	FINISH	WEIGHT	QTY/BOX
JW2886044	Natural	44 lb	Bag
JW2886144	White	44 lb	Bag
JW2886244	Brown	44 lb	Bag

Characteristics

Volume: Granular

Material: EVA Copolymer

Line Speed: 18-50 m/min

Working Temperature: 190-210 °C

For Thick PVC or ABS Edgebanding

EVA Copolymer

Richelieu Section 17A



- 1 SCREWS AND FASTENERS
- 2 FURNITURE EQUIPMENT
- 3 HINGES
- 4 SLIDES
- 5 CASTERS AND LEGS
- 6 KITCHEN SOLUTIONS
- 7 CLOSET SOLUTIONS
- 8 LIGHTING SOLUTIONS
- 9 SINKS AND FAUCETS
- 10 OFFICE
- 11 SLIDING DOORS
- 12 GLASS HARDWARE
- 13 PANELS AND SURFACES
- 14 EDGE-BANDING
- 15 CABINET DOORS AND DRAWERS
- 16 CORBELS AND FLOOR REGISTERS
- 17 GLUES, SILICONES, CAULK AND INSULATING
- 18 TOOLS AND SECURITY
- 19 FINISHING PRODUCTS AND SHOP SUPPLIES
- 20 COMMERCIAL DISPLAY HARDWARE
- 21 MOLDING, RAILING AND BATHROOM HARDWARE

Glues, Adhesives and Accessories

Hot Melt Glue Sticks

Electric Glue Gun

This electric glue gun has a powerful 220W heating element (ACNOR approval). The temperature is factory preset at 193 °C (379 °F).

- The insulated nozzle minimizes surface burns and damage
- The handle is specifically designed to accommodate small hands
- Detachable handle
- Bright switch

PRODUCT	QTY/BOX
110400	1

LIONGRIP 6363 Hot-melt Glue Stick

UltraStix UHD is a colorless and translucent high-quality adhesive for high-resistance adhesion of very diverse materials. It is designed for use with gun spray 110400.

PRODUCT	FINISH	QTY/BOX
6363305	Transparent / Clear	16
636330	Transparent / Clear	16

Characteristics

Diameter: 1/2"

Length: 10"

Finish: Clear

3M Industrial Hot Melt Gun

PRODUCT	QTY/BOX
99303	1

Suggested Product(s):

91327 – Hot Melt Gluestick – White

91308 – Hot Melt Gluestick – Yellow

3M Scotch-Weld Hot Melt Adhesive 3738

- 3M hot melt adhesive in stick form
- For use with glue gun – 99303

PRODUCT	LENGTH	FINISH	QTY/BOX
91308	2"	Yellowish	650
91327	8"	White	168
JW26900	10"	Whitish	10

Richelieu Section 17A



Glues, Adhesives and Accessories

Hot Melt Glue Sticks

3M Scotch-Weld Hot Melt Adhesive 3792 Q Clear – 5/8" x 8"

- 100% solids, solvent-free hot melt resin adhesive
- Bond strength normally achieved in seconds
- Line includes low temperature 265 °F (129 °C) hot melt adhesives in stick, cartridge and bulk form
- Recommended for: Upholstered/reupholstered furniture, Corner spacer blocks, Drawer bottom stiffeners, Wood drawer guides, V-groove bonding, Fabric bonding
- Application: Wood, plastics, foam, fabric, cardboard and many other surfaces

PRODUCT	LENGTH	QTY/BOX
379211	8"	160

Characteristics

Diameter: 5/8"
Application Tool: 3M 5/8"
Weight: 11 lb
Finish: Clear

3M Scotch-Weld Application AE II

PRODUCT	QTY/BOX
99305	1

Suggested Product(s):

375012 – HotMelt Gluestick

3M Hot Melt Glue Stick

- General purpose adhesive for woodworking chipboard packaging and other lightweight materials
- Quickly bonds soft and hard woods, particle board and chipboard
- Also bonds corrugated and wax-coated cartons and cushioning foams
- 50 seconds open time between time glue is applied and parts are joined

PRODUCT	LENGTH	FINISH	QTY/BOX
375012	12"	Tan	350

Characteristics

Diameter: 1/2"
Application Tool: AE Jet Melt Gun TC (99305)
Weight: 25 lb
Bonding Strength: 500 PSI

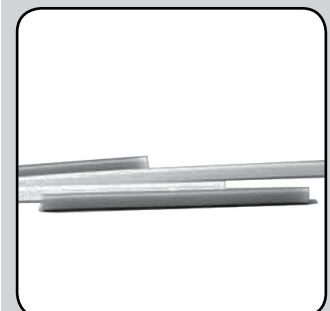
TCQ Accessories

Gun and components.

Sold by unit

PRODUCT	DESCRIPTION	QTY/BOX
99307	Trigger	1
99308	Converter	1

Richelieu Section 17A



- 1 SCREWS AND FASTENERS
- 2 FURNITURE EQUIPMENT
- 3 HINGES
- 4 SLIDES
- 5 CASTERS AND LEGS
- 6 KITCHEN SOLUTIONS
- 7 CLOSET SOLUTIONS
- 8 LIGHTING SOLUTIONS
- 9 SINKS AND FAUCETS
- 10 OFFICE
- 11 SLIDING DOORS
- 12 GLASS HARDWARE
- 13 PANELS AND SURFACES
- 14 EDGE-BANDING
- 15 CABINET DOORS AND DRAWERS
- 16 CORBELS AND FLOOR REGISTERS
- 17 GLUES, SILICONES, CAULK AND INSULATING
- 18 TOOLS AND SECURITY
- 19 FINISHING PRODUCTS AND SHOP SUPPLIES
- 20 COMMERCIAL DISPLAY HARDWARE
- 21 MOLDING, RAILING AND BATHROOM HARDWARE

CCRMUS 2017

Glues, Adhesives and Accessories

Polyurethane Construction Adhesive Cartridges

Richelieu Section 17A

Construction Adhesive LIONGRIP PU Plus

- VOC compliant
- Contributes to LEED credit
- Excellent adhesion strength
- Nonfreezing
- Waterproof
- Quick setup
- Adheres to dry, wet, or frozen wood
- Application: Wood, Hardwood flooring, Concrete, Stone, Marble, Slate, Masonry, Brick, Foam insulation, Carpets, Metal, Lead, Cement-based products, Ceramics, Mirrors, Drywall, Fiberglass, Any interior and exterior projects

Sold by unit

PRODUCT	VOLUME	QTY/BOX
R519300PU	10 oz	12
R519828PU	29 oz	12

Characteristics

Finish: Clear Brown

Material: Polyurethane

Special Application: Eco-Friendly (Low-VOC) , Construction Grade

Application Temperature: 4 °C (40 °F)

Open Time: 30 minutes

Viscosity: 160 000 cps

Slab Temperature: 10 to 38 °C (50 to 100 °F)

Freeze/Thaw Stability: Does not freeze

Solid Content (approx.): 90%

Flash Point: 121 °C (250 °F)



Pro Heavy-Duty Construction Adhesive

- Superior force
- Conforms to VOC standards
- Water-resistant
- Application: Wood, Metal, Brick, Marble, Ceramic, Concrete, Drywall, Frozen and treated wood

Sold by unit

PRODUCT	VOLUME	QTY/BOX
15005252	28 oz	12
15005251	10 oz	12

Characteristics

Finish: Brown

Special Application: Eco-Friendly (Low-VOC)

Application Temperature: -17 °C to 38 °C (0 °F to 100 °F)

Viscosity: 160 000 cps

Freeze/Thaw Stability: Does not freeze

Solid Content (approx.): 66%

Flash Point: <-17 °C (0 °F)



Titebond Interior/Exterior Adhesive (Multi-Purpose)

- Works extremely well in colder temperatures
- Ideal for wood, paneling, foamboard, tub surrounds, metal and much more
- Exceeds ASTM C557 specifications
- Application: Wood, paneling, drywall, ceramic tile, metal, foamboard and tub surrounds.
Effective for installing foam insulation and panels to most building materials

Sold by unit

PRODUCT	VOLUME	QTY/BOX
15003451	10 oz	12

Characteristics

Finish: Tan

Material: Synthetic Elastomeric Polymer

Special Application: Construction Grade

Working time: 30 minutes



Glues, Adhesives and Accessories

Polyurethane Construction Adhesive Cartridges

Titebond Heavy Duty Adhesive

- Extremely versatile bonds most common building materials
- Fills gaps and irregularities between materials and provides a more solid backup surface
- Exceeds the performance requirements of the American Plywood Association's AFG-01 specification, ASTM D3498 and ASTM C557, HUD/FHA Use of Materials Bulletin #60
- Reduces amount of nailing required and helps eliminate squeaky floors
- Offers excellent water-resistance and remains permanently flexible
- Application: Construction applications including wet, frozen and treated lumber. Ideal for metal, brick, concrete, ceramics and most large panel-type substrates

Sold by unit

PRODUCT	VOLUME	QTY/BOX
15005261	10.5 oz	12
15005262	29 oz	12

Characteristics

Finish: Light Tan

Material: Synthetic Elastomeric Polymer

Special Application: Construction Grade

Not available in the following OTC states: VT, NY, MA, VA, CT, PA, MT, NH, MD, ME, DE, DC, RI, NJ

Titebond HiPURformer

- For interior/exterior use
- Waterproof
- Versatile performance
- Greatly reduces or eliminates mechanical fasteners in many applications
- Solvent free and nonflammable
- Trim and molding, chair rails, cabinetry and case goods
- Birdhouses, planters, furniture and other outdoor applications
- UV indicator for easy cleanup
- Application: Wood and wood-composite applications

Sold by unit

PRODUCT	VOLUME	QTY/BOX
15001301	1.76 oz	10
15001311	1.76 oz	10
15001321	1.76 oz	10

Characteristics

Finish: Clear

Material: Polyurethane

Special Application: Eco-Friendly (Low-VOC)

Construction Glues and Adhesives

Fast Grab FRP Adhesive

- Environmentally safe: VOC-compliant
- Quick grab: Minimal bracing
- Nonflammable: No offensive odor
- Cleans easily with water in wet state
- Application: Many common porous building materials including drywall and non-treated plywood

Sold by unit

PRODUCT	VOLUME	QTY/BOX
15004056	1 gal.	1
150094054	4 gal.	1

Characteristics

Recommended for: Exterior

Special Application: Fast-Drying

Color before Application: Light Beige

Open Assembly Time: 20 min.

Material: Proprietary Emulsion Polymer

Characteristics: Eco-Friendly (VOC and HAP)

Base: Polymer

Application temperature: Over 50 °F and below 90 °F for adhesive and substrates.

Service temperatures: 0 °F to 110 °F.

Method of application: V-notched trowel, 3/16" wide x 1/4" deep, spaced 1/2" c.c.

Coverage: 50 sq. ft. per gallon.

Working time: 20 minutes at 70 °F.

Richelieu Section 17A



1
SCREWS
AND
FASTENERS

2
FURNITURE
EQUIPMENT

3
HINGES

4
SLIDES

5
CASTERS
AND LEGS

6
KITCHEN
SOLUTIONS

7
CLOSET
SOLUTIONS

8
LIGHTING
SOLUTIONS

9
SINKS
AND
FAUCETS

10
OFFICE

11
SLIDING
DOORS

12
GLASS
HARDWARE

13
PANELS
AND
SURFACES

14
EDGE-
BANDING

15
CABINET
DOORS
AND
DRAWERS

16
CORBELS
AND FLOOR
REGISTERS

17
GLUES,
SILICONES,
CAULK AND
INSULATING

18
TOOLS
AND
SECURITY

19
FINISHING
PRODUCTS
AND SHOP
SUPPLIES

20
COMMERCIAL
DISPLAY
HARDWARE

21
MOLDING,
RAILING AND
BATHROOM
HARDWARE

Glues, Adhesives and Accessories

Construction Glues and Adhesives

Richelieu Section 17A

Panel Adhesive

Titebond® GREEN choice Advanced Polymer Panel Adhesive is a professional-strength adhesive specifically formulated for use with most types of paneling installations. This high-performance adhesive has a rapid cure rate, trowels easily, contains no water, and is resistant to moisture, mold and mildew. This adhesive provides as much strength in four hours as its urethane or solvent-based counterparts do in 24 hours.

- Environmentally safe and VOC-compliant
- Fast strength development
- Nonflammable
- No offensive odor
- Bonds non-porous surfaces
- Resistant to moisture, mold and mildew
- Application : Ultra-quick development of adhesive strength enables contractors to install virtually any type of paneling on porous or non-porous substrates without using fasteners

Sold by unit

PRODUCT	VOLUME	QTY/BOX
15004319	3.5 gal.	1

Characteristics

Material: Polyether
Characteristics: Non-Flammable
Base: Solvent
Application Color: Light Tan
Packing: Bulk/Liquid
Finish: Light Tan



Titebond All Weather Subfloor Adhesive

Ideal for plywood, particleboard, OSB, and wet, frozen and ACA and CCA treated lumber.

- Works extremely well in colder temperatures
- Fills gaps and irregularities between materials to provide a more solid backup surface
- Exceeds the performance requirements of the American Plywood Association AFG-01 specification, ASTM D3498, ASTM C557, CAN/CGSB-71.26M and CAN/CGSB-71.25M

Sold by unit

PRODUCT	VOLUME	QTY/BOX
150095492	29 oz	12

Characteristics

Recommended for: Indoor
Special Application: All-Weather Subfloor Adhesive
Color before Application: Tan
Open Assembly Time: 10-20 min.
Material: Synthetic Elastomeric Polymer
Characteristics: Flammable
Base: Polymer



Cleaners for Glue and Adhesives

LIONGRIP Citrus Cleaner CCAR

Adhesive remover and cleaner. Green product.

- 100% natural; no petroleum distillates
- Fresh, citrus scent
- Non-corrosive, biodegradable
- Cleans a variety of surfaces, including laminate countertops, metals, flooring, motors, concrete, and printing equipment
- Application: Laminate removal, Flushing hose/gun between applications, Removes scuff marks, graffiti, grease and tar

Sold by unit

PRODUCT	VOLUME	QTY/BOX
RCCAR09C	9 lb	12
RCCAR13C	13 oz	12

Characteristics

Base: Solvent
Characteristics: Eco-Friendly (Low VOC and HAP)
Finish: Clear
Solvent: Isopropyl Alcohol



Glues, Adhesives and Accessories

Cleaners for Glue and Adhesives

Cleaner for Hot Melt Equipment

This product is designed to clean edgebanding equipment.

Sold by unit

PRODUCT	WEIGHT	QTY/BOX
82711	4.5 kg	1

Characteristics

Finish: Clear

Adhesive Cleaner – LIONGRIP RS020

LIONGRIP RS020 is ideal for cleaning and diluting all Richelieu LIONGRIP contact cements.

This product features a special formula that performs excellently on adhesive residue.

- Application: Effectively dissolves fresh or dry adhesive from laminates or other surfaces. Can also be used to clean tools and equipment such as sprayers, brushes, rollers, and containers. Before use, test the surface to be cleaned to ensure compatibility with product

Sold by unit

PRODUCT	VOLUME	QTY/BOX
RS02020L	5 gal.	1

Characteristics

Finish: Clear

Drying Time: 2 to 4 Minutes

VOC Concentration

(EPA Methode 24): 761 grams per liter

Flash Point: -29 °C (-20 °F)

Product Density: 6.4 lb per gallon

Multi-Purpose Citrus Adhesive Remover

LIONGRIP R009 is a natural solvent cleaner and adhesive remover. It can be used to remove adhesives, grease, decal residue, soap film, and much more.

- Fast drying with minimal residue
- Non-corrosive
- Application: Can be used safely on most surfaces including: Glass, Painted surface, Porcelain, Plastic

Sold by unit

PRODUCT	VOLUME	QTY/BOX
R00909C	9 lb	1
R00913C	13 oz	12

Characteristics

Base: Solvent

Finish: Clear

Product Density: 6.84 lb per gallon

Richelieu Section 17A



- 1 SCREWS AND FASTENERS
- 2 FURNITURE EQUIPMENT
- 3 HINGES
- 4 SLIDES
- 5 CASTERS AND LEGS
- 6 KITCHEN SOLUTIONS
- 7 CLOSET SOLUTIONS
- 8 LIGHTING SOLUTIONS
- 9 SINKS AND FAUCETS
- 10 OFFICE
- 11 SLIDING DOORS
- 12 GLASS HARDWARE
- 13 PANELS AND SURFACES
- 14 EDGE-BANDING
- 15 CABINET DOORS AND DRAWERS
- 16 CORBELS AND FLOOR REGISTERS
- 17 GLUES, SILICONES, CAULK AND INSULATING
- 18 TOOLS AND SECURITY
- 19 FINISHING PRODUCTS AND SHOP SUPPLIES
- 20 COMMERCIAL DISPLAY HARDWARE
- 21 MOLDING, RAILING AND BATHROOM HARDWARE

CCRMUS 2017

Glues, Adhesives and Accessories

Adhesive Accessories

Bottle

Empty glue bottle with cap. Large (25 mm) neck.

Sold by unit

PRODUCT	VOLUME	QTY/BOX
B001	500 ml	150

Characteristics

Finish: Clear

Cap for B001 Glue Bottle

Replacement cap for Richelieu glue bottle B001.

Sold by unit

PRODUCT	QTY/BOX
B002	250

Characteristics

Material: Plastic

Glü-Bot Plastic Bottles

Unique design that sucks the glue back inside for a clean tip every time! The GlüBot is designed with a 2-chamber system that pushes glue from the bottom up through the secondary side chamber. When you stop squeezing, the GlüBot sucks the glue back inside and leaves a clean, clog free tip. Great for: – Yellow glue – Wood glue – Paint thinner – Lacquer thinner – Alcohol – Solvents – Water

PRODUCT	SIZE	QTY/BOX
916433	16 oz	1
916434	4 oz	1

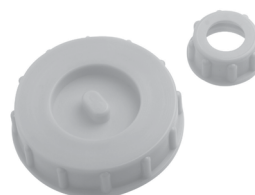
Glü-Bot Lids and Retaining Rings

PRODUCT	DETAILS	QTY/BOX
918017	For 16 oz. bottle	1
918018	For 4 oz. bottle	1

Richelieu Section 17A



 **FastCap**



 **FastCap**

Replacement Tips for Glü-Bot

PRODUCT	FINISH	DETAILS	QTY/BOX
916426	White	For 16 oz. bottle	1

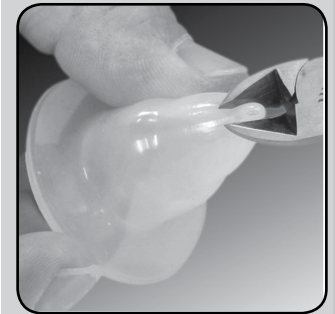
Universal Glue Bottle Tip (2-Pack)

FastCap's new GluNip stretches to fit any bottle of glue. The supple, durable silicone tip is the perfect no-clog solution for keeping your glue fresh and ready to use. Nothing sticks to it!

Specification(s):

- Material: Silicone
- Details: Any Glue Bottle

PRODUCT	FINISH	LENGTH	WIDTH	WEIGHT	HEIGHT	QTY/BOX
919084	Clear White	1"	3"	0.05 lb	13/64"	2



1	SCREWS AND FASTENERS
2	FURNITURE EQUIPMENT
3	HINGES
4	SLIDES
5	CASTERS AND LEGS
6	KITCHEN SOLUTIONS
7	CLOSET SOLUTIONS
8	LIGHTING SOLUTIONS
9	SINKS AND FAUCETS
10	OFFICE
11	SLIDING DOORS
12	GLASS HARDWARE
13	PANELS AND SURFACES
14	EDGE-BANDING
15	CABINET DOORS AND DRAWERS
16	CORBELS AND FLOOR REGISTERS
17	GLUES, SILICONES, CAULK AND INSULATING
18	TOOLS AND SECURITY
19	FINISHING PRODUCTS AND SHOP SUPPLIES
20	COMMERCIAL DISPLAY HARDWARE
21	MOLDING, RAILING AND BATHROOM HARDWARE

NOTES

Cyanoacrylate Products and Accessories

Industrial Grade Instant Adhesive Cyanoacrylate Glue

- Industrial grade for maximum bonding strength
- The thin version wicks into tight places where flowing into and under is essential
- Medium and Heavy are for semi-smooth surfaces
- Gel viscosity is for filling and bonding porous surfaces.
- Non whitening activator accelerates your curing time
- De-bonder removes unwanted and excess glue
- Application: Glue any combination of wood, naugahyde, plastic, veneers, cardboard, rubber, ceramics, leather or vinyl

Sold by unit

PRODUCT	DESCRIPTION	QTY/BOX
M745-1001	De-bonder, 2 oz	12
M745-1005	Thin adhesive, 2 oz	15
M745-1241	Thin adhesive, 1 oz	12
M745-1242	Medium adhesive, 1 oz	24
M745-1243	Heavy adhesive, 1 oz	12
M745-1260	Medium/Thin, 2 oz	25
M745-1300	Medium adhesive, 2 oz	15
M745-1310	Medium adhesive, 8 oz	12
M745-1410	Thin adhesive, 8 oz	12
M745-1430	Heavy adhesive, 2 oz	15
M745-1480	Empty 8 oz activator bottle with pump	12
M745-1488	Pump only, 8 oz activator	1
M745-1490	Instant adhesive tips (2/PKG)	12
M745-1499	Instant adhesive starter kit (1 each of: 2 oz thin adhesive, 2 oz medium adhesive, 20 grams gel adhesive, 2 oz de-bonder, 2 oz activator)	5
M745-1500	Gel adhesive, 20 grams	12
M745-1524	Activator, 1 quart	12
M745-2002	Activator, 2 oz	10
M745-2005	Activator, 8 oz	12
M745-2012	Activator Aerosol, 10 oz	12

Richelieu Section 17B



1	SCREWS AND FASTENERS
2	FURNITURE EQUIPMENT
3	HINGES
4	SLIDES
5	CASTERS AND LEGS
6	KITCHEN SOLUTIONS
7	CLOSET SOLUTIONS
8	LIGHTING SOLUTIONS
9	SINKS AND FAUCETS
10	OFFICE
11	SLIDING DOORS
12	GLASS HARDWARE
13	PANELS AND SURFACES
14	EDGE-BANDING
15	CABINET DOORS AND DRAWERS
16	CORBELS AND FLOOR REGISTERS
17	GLUES, SILICONES, CAULK AND INSULATING
18	TOOLS AND SECURITY
19	FINISHING PRODUCTS AND SHOP SUPPLIES
20	COMMERCIAL DISPLAY HARDWARE
21	MOLDING, RAILING AND BATHROOM HARDWARE

CCRMUS 2017

I Glues, Silicones, Caulk and Insulating I

Cyanoacrylate Products and Accessories

Richelieu Section 17B

Mitre-Pro Glue

Mitre Pro Adhesive is a high-viscosity adhesive system for bonding where large gap fill is important or where materials are absorbent. This versatile system will bond most woods, plastics, rubbers and metals.

Because of its viscosity Mitre-Pro Adhesive allows additional bonding time prior to curing when used without activator. When used with Mitre-Pro activator, the cure speed is significantly increased without affecting bond strength.

- Application: Cure speed with activator: 5-20 seconds, depending on substrate and conditions, Cure speed without activator: 25-60 seconds, depending on substrate and conditions, Operating temperature: -50 °C to 80 °C, Full cure time: 24 hours at 20 °C

Sold by unit

PRODUCT	WEIGHT	QTY/BOX
099606G	50 g	10
099606GT	50 g	10

Characteristics

Application Color: Clear

Special Features: Nonflammable

Finish: Clear

Material: Ethyl-2-cyanoacrylate



Mitre-Pro Activator

Mitre Pro Adhesive is a high-viscosity adhesive system for bonding where large gap fill is important or where materials are absorbent. This versatile system will bond most woods, plastics, rubbers and metals.

Because of its viscosity, Mitre-Pro Adhesive allows additional bonding time prior to curing when used without activator. When used with Mitre-Pro activator, the cure speed is significantly increased without affecting bond strength.

- Application: Cure speed with activator: 5-20 seconds, depending on substrate and conditions, Cure speed without activator: 25-60 seconds, depending on substrate and conditions, Operating temperature: -50 °C to 80 °C, Full cure time: 24 hours at 20 °C

Sold by unit

PRODUCT	VOLUME	QTY/BOX
099606A	200 ml	12

Characteristics

Application Color: Clear

Special Features: Flammable

Finish: Clear

Material: Butane, Isobutane

Base: Solvent



Suggested Product(s):

099606G – Mitre-Pro Glue

I Glues, Silicones, Caulk and Insulating I

2P-10 Instant Glues

2P-10 Adhesive System Kit

With 2P-10, you can easily glue the hardest joints in cabinetry without clamping!

- Excellent crack-wicking properties: 10-second bonding, 30 seconds to cure!
- Applications: Vertical surfaces
- Thick product is ideal for use on porous surfaces such as particle board
- Medium product is ideal for use on smooth surfaces such as melamine and laminate

Products included in kit:

- 1 x 2.25 oz. Gel
- 1 x 2.25 oz. Thick
- 1 x 2.25 oz. Medium
- 2 x 2 oz. Activators
- 1 x 2 oz. Debonder Gel

PRODUCT	QTY/BOX
Q2P10KIT	1

2P-10 Solo Adhesive Kit

With 2P-10 you can easily glue the hardest joints in cabinetry without clamping!

- Excellent crack-wicking properties: 10-second bonding, 30 seconds to cure!
- Applications: Vertical surfaces
- Thick product is ideal for use on porous surfaces such as particle board

Products included in kit:

- 1 x 2.25 oz. Thick
- 1 x 12 oz. Activator

Sold by unit

PRODUCT	QTY/BOX
916495	25

2P-10 Adhesives

Sold by unit

PRODUCT	DETAILS	SIZE	QTY/BOX
916428	Medium	10 oz	42
916429	Thick	10 oz	42
916431	Gel	10 oz	42
918842	Thin	8 oz	42

Richelieu Section 17C



- 1 SCREWS AND FASTENERS
- 2 FURNITURE EQUIPMENT
- 3 HINGES
- 4 SLIDES
- 5 CASTERS AND LEGS
- 6 KITCHEN SOLUTIONS
- 7 CLOSET SOLUTIONS
- 8 LIGHTING SOLUTIONS
- 9 SINKS AND FAUCETS
- 10 OFFICE
- 11 SLIDING DOORS
- 12 GLASS HARDWARE
- 13 PANELS AND SURFACES
- 14 EDGE-BANDING
- 15 CABINET DOORS AND DRAWERS
- 16 CORBELS AND FLOOR REGISTERS
- 17 GLUES, SILICONES, CAULK AND INSULATING
- 18 TOOLS AND SECURITY
- 19 FINISHING PRODUCTS AND SHOP SUPPLIES
- 20 COMMERCIAL DISPLAY HARDWARE
- 21 MOLDING, RAILING AND BATHROOM HARDWARE

CCRMUS 2017

2P-10 Refills

PRODUCT	DETAILS	SIZE	QTY/BOX
916438	Medium	2.25 oz	1
916440	Activator	2 oz	1
916442	Debonder	2 oz	1
916496	Thick	2.25 oz	1
9164311	Gel	2.25 oz	1
916499	Thin	2.25 oz	1

2P-10 Aerosol Activator

With 2P-10 Activator you can easily glue the hardest joints in cabinetry without clamping!

- Excellent crack-wicking properties: 10-second bonding, 30 seconds to cure!

Sold by unit

PRODUCT	SIZE	QTY/BOX
916453	12 oz	12

Rubber Toughened 2P-10 Adhesive

- Thick and Gel viscosity
- Rubber provides elasticity to joints
- 10% stronger than standard 2P-10

PRODUCT	DETAILS	SIZE	QTY/BOX
916461	Gel	2.25 oz	1
916465	Gel	10 oz	1
916467	Thick	2.25 oz	1
916469	Thick	10 oz	1



I Glues, Silicones, Caulk and Insulating I

2P-10 Instant Glues

2P-10 Gel Tube Adhesive

2P-10 is an industrial-grade instant glue. It is triple distilled and acidically modified to work specifically with wood.

- Excellent crack-wicking properties: 10-second bonding, 30 seconds to cure!
- Easy to sand within 60 seconds
- 2-year guaranteed shelf life
- Triple distilled for purity
- 4000 PSI tensile and sheer
- Non-clogging pin cap
- Dries crystal clear
- Application: Vertical surfaces and all purpose applications

Sold by unit

PRODUCT	SIZE	QTY/BOX
918850	300 ml	42

2P-10 Adhesive Colorants Kit

This new high-tech adhesive colorant is specifically made to work with the 2P-10 system and allows you to mix exactly the right tint of 2P-10 filler in seconds. Simply mix the dry colorant on the yellow mixing pad to get the shade you want, then add a small amount of 2P-10 Gel. Mix, apply, spray with activator, and sand. You're going to love the results!

- Provides filling perfection in a matter of minutes
- Extremely effective on all surfaces

PRODUCT	FINISH	QTY/BOX
918856	Red, White, Blue, Yellow, Black, Brown	1 kit

Micro-Tip for 2P-10 Glue Bottle

PRODUCT	FINISH	QTY/BOX
918016	Red	25

Richelieu Section 17C



- 1 SCREWS AND FASTENERS
- 2 FURNITURE EQUIPMENT
- 3 HINGES
- 4 SLIDES
- 5 CASTERS AND LEGS
- 6 KITCHEN SOLUTIONS
- 7 CLOSET SOLUTIONS
- 8 LIGHTING SOLUTIONS
- 9 SINKS AND FAUCETS
- 10 OFFICE
- 11 SLIDING DOORS
- 12 GLASS HARDWARE
- 13 PANELS AND SURFACES
- 14 EDGE-BANDING
- 15 CABINET DOORS AND DRAWERS
- 16 CORBELS AND FLOOR REGISTERS
- 17 GLUES, SILICONES, CAULK AND INSULATING
- 18 TOOLS AND SECURITY
- 19 FINISHING PRODUCTS AND SHOP SUPPLIES
- 20 COMMERCIAL DISPLAY HARDWARE
- 21 MOLDING, RAILING AND BATHROOM HARDWARE

NOTES

I Glues, Silicones, Caulk and Insulating I

Silicone and Paintable Latex

Richelieu Bathroom and Kitchen 100% Silicone Sealant

Richelieu® 941600 bathroom and kitchen 100% silicone sealant is a medium modulus, single-component, non-sag, acetoxy-cure caulking material. Specifically designed to resist mould and mildew when fully cured. Richelieu® 941600 also features excellent resistance to weathering, vibration, moisture, ozone, and extreme temperatures. This sealant may be applied in sub-zero weather without loss of extrusion or physical characteristics, and is effective to -46 °C (-50 °F).

- NSF (National Sanitation Foundation) approved
- 100% silicone
- Mildew-resistant
- 100% RTV
- Excellent performance in extreme temperatures
- Application: Caulking and sealing around bathtubs, shower stalls, bathroom vanities, kitchen counters and sinks. Gives excellent adhesion to ceramics, tile board, solid surface, laminated plastic, and most acrylics. Replacing ceramic tiles and making new gaskets for dishwasher doors

Sold by unit

PRODUCT	VOLUME	FINISH	COLOR ON APPLICATION	QTY/BOX
94160011	300 ml	Clear	Clear	12
94160030	300 ml	White	White	12

Characteristics

Material: Silicone

Recommended for: Interior, Outside, Bath / Shower / Kitchen

Special Application: NSF51 certified for food contact

Properties: Not Paintable

Richelieu Painter's Ultra Siliconized Acrylic Latex

Richelieu® 941501 painter's ultra-siliconized acrylic latex is a moderately priced caulking material with added silicone for superior adhesion and strength.

- Paintable within minutes
- Adheres to many construction substrates
- Ideal for walls, panels, door frames, baseboards, and much more
- An excellent all-purpose sealant for cracks and joints
- Cures to rubbery seal that withstands joint movement of 50%, 18% compression, 18% extension
- Ready to use: No mixing required
- Long-lasting: Life expectancy of cured sealant in place is approximately 20 years
- Paintable within 30 to 60 minutes after application
- Will not sag or run when applied on vertical joints, if applied according to directions
- Non-staining: Resists chemical and solvent damage
- Solvent free: Cleans up with water. Beads may be tooled with soapy water
- Dirt: Resists dirt pick-up once cured
- Application: Good adhesion to the full range of construction substrates including wood, concrete, metal, glass, stone, brick, stucco and marble. This sealant is also recommended for sealing interior joints between walls and panels, around door frames and baseboards, and joints between bathroom fixtures and walls

Sold by unit

PRODUCT	VOLUME	FINISH	QTY/BOX
94150111	300 ml	Clear	12
94150130	300 ml	White	12

Characteristics

Material: Acrylic Latex with Silicone

Recommended for: Interior

Color on Application: White

Special Application: Waterproof

Properties: Paintable

Richelieu Section 17D



- 1 SCREWS AND FASTENERS
- 2 FURNITURE EQUIPMENT
- 3 HINGES
- 4 SLIDES
- 5 CASTERS AND LEGS
- 6 KITCHEN SOLUTIONS
- 7 CLOSET SOLUTIONS
- 8 LIGHTING SOLUTIONS
- 9 SINKS AND FAUCETS
- 10 OFFICE
- 11 SLIDING DOORS
- 12 GLASS HARDWARE
- 13 PANELS AND SURFACES
- 14 EDGE-BANDING
- 15 CABINET DOORS AND DRAWERS
- 16 CORBELS AND FLOOR REGISTERS
- 17 GLUES, SILICONES, CAULK AND INSULATING
- 18 TOOLS AND SECURITY
- 19 FINISHING PRODUCTS AND SHOP SUPPLIES
- 20 COMMERCIAL DISPLAY HARDWARE
- 21 MOLDING, RAILING AND BATHROOM HARDWARE

I Glues, Silicones, Caulk and Insulating I

Silicone and Paintable Latex

Richelieu Section 17D

Nuco Silicone Free Latex Caulk 130

NuFlex® 130 acrylic painter's caulk and trim seal is an economy-priced caulking material ideally suited for interior and exterior caulking and sealing applications. When exposed to the atmosphere, cures to a form a continuous seal.

- Paintable within minutes
- Matte finish
- Ideal for repairing nail holes in drywall
- Ideal for perimeter trim sealing
- Application: designed for cracks and joints and adheres to a full range of construction substrates including wood, concrete, metal, glass, stone, brick, stucco and marble. Also recommended for sealing interior joints between walls and panels, around door frames and baseboards, and joints between bathroom fixtures and walls

Sold by unit

PRODUCT	VOLUME	FINISH	QTY/BOX
94150030	300 ml	White	12

Characteristics

Material: Water Based
Recommended for: Interior
Color on Application: White
Dried Film: White
Properties: Paintable



ALEX PLUS Caulk

Superior quality, multi-purpose acrylic latex caulk plus silicone.

- Highly flexible and durable
- Excellent adhesion
- Cured caulk is mildew-resistant
- Interior/exterior use
- Paintable
- Water clean-up
- 35-year durability guarantee

Exceeds ASTM Specification C 834.

Sold by unit

PRODUCT	VOLUME	FINISH	COLOR ON APPLICATION	QTY/BOX
150111	300 ml	Clear	White	12
150130	300 ml	White	White	12

Characteristics

Material: Acrylic Latex with Silicone
Recommended for: Interior
Properties: Paintable



Titebond Silicone

- Versatile 100% silicone formula designed for interior and exterior applications
- Ideal for most construction, remodeling, and repair projects
- This formula creates a tough yet flexible seal that is watertight and mildew-resistant
- 100% silicone adheres strongly to most building materials and can withstand extreme temperature changes
- It has been certified to Federal Specification TT-S-001543A, Class A and passes ASTM C920 Type S, Grade NS, Class 25
- Application: Doors, windows, siding, vents, tubs, sinks and more

Sold by unit

PRODUCT	VOLUME	FINISH	QTY/BOX
15002611	10 oz	Transparent	12
15002621	10 oz	Light Tan	12



I Glues, Silicones, Caulk and Insulating I

Silicone and Paintable Latex

Phenoseal Acrylic Latex Caulk

Phenoseal Does It Clear Adhesive Caulk is a water-based sealant ideal for use wherever an invisible seal is desired. It won't crack or discolor with age and may be scrubbed with most household cleansers. It provides a maximum protection from moisture damage and mildew growth on the cured caulk. Does It Clear can be used for a wide variety of interior and exterior applications. It provides a durable, weatherproof seal by preventing air and moisture from passing through cracks and joints. It provides excellent flexibility to resist expansion and contraction without cracking and it cleans up easily with soap and water.

Sold by unit

PRODUCT	QTY/BOX
145090	12

DAP 100% Silicone Rubber Sealant

- Superior quality, multi-purpose sealant
- Provides a weatherproof, watertight seal with excellent adhesion

Sold by unit

PRODUCT	VOLUME	FINISH	COLOR ON APPLICATION	QTY/BOX
GLU8641	10 oz	White	Clear	12
GLU8646	10 oz	White	White	12
GLU8649	10 oz	White	Almond	12

Characteristics

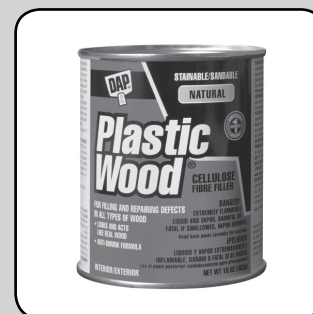
Recommended for interior and exterior

DAP Plastic Wood

- High performance wood filler that hardens to give a surface and body that looks and acts like real wood
- For furniture, doors, paneling, molding, plywood and other wood surfaces

PRODUCT	QTY/BOX
GLU21506	1

Richelieu Section 17D



- 1 SCREWS AND FASTENERS
- 2 FURNITURE EQUIPMENT
- 3 HINGES
- 4 SLIDES
- 5 CASTERS AND LEGS
- 6 KITCHEN SOLUTIONS
- 7 CLOSET SOLUTIONS
- 8 LIGHTING SOLUTIONS
- 9 SINKS AND FAUCETS
- 10 OFFICE
- 11 SLIDING DOORS
- 12 GLASS HARDWARE
- 13 PANELS AND SURFACES
- 14 EDGE-BANDING
- 15 CABINET DOORS AND DRAWERS
- 16 CORBELS AND FLOOR REGISTERS
- 17 GLUES, SILICONES, CAULK AND INSULATING
- 18 TOOLS AND SECURITY
- 19 FINISHING PRODUCTS AND SHOP SUPPLIES
- 20 COMMERCIAL DISPLAY HARDWARE
- 21 MOLDING, RAILING AND BATHROOM HARDWARE

CCRMUS 2017

Cradle Barrel Extra Thrust Caulking Gun for 300 ml Cartridge

Specification:

- Mechanical advantage 18:1
- Wear compensating device
- Built-in ladder hook
- Catch plate – sintered steel
- Barrel turns – application around corners
- Medium-high viscosity materials
- Thumb activated instant pressure release

Sold by unit

PRODUCT	QTY/BOX
91343402	12

Cradle Barrel Caulking Gun for 300 ml Cartridge

Specification:

- Mechanical advantage: 12:1
- Switchable flow control
- Wear compensating device
- Built-in ladder hook
- High volume usage
- Catch plate – sintered steel
- Barrel turns – application around corners
- Low-medium viscosity materials
- Thumb activated instant pressure release

Sold by unit

PRODUCT	QTY/BOX
91346829	12

Skeleton Steel Caulking Gun for 310 ml Cartridge

- Single component applicator
- Capacity: 10 oz / 310 ml

Sold by unit

PRODUCT	QTY/BOX
91340496	24

Characteristics

Handle: Zinc alloy
Trigger: Metal
 Single gripping plate
 Hardness rod
 Hardness push disc
 Attached puncture tool

Cradle Barrel Caulking Gun for 856 ml Cartridge

Specification:

- Single component applicator
- Capacity: 29 oz / 856 ml
- Handle: Aluminum
- Trigger: Metal
- Carriage: Metal
- Twin gripping plate.
- Riveted of reinforce carriage
- Attached puncture tool
- 360° rotary type handle

Sold by unit

PRODUCT	QTY/BOX
91343405	12



I Glues, Silicones, Caulk and Insulating I

Silicone and Paintable Latex

Caulking Gun with 600 ml Aluminum Tube

Specification(s):

- Single component applicator
- Capacity: 20 oz / 600 ml
- Thrust Ratio: 18:1
- Handle: Aluminum alloy
- Trigger: Metal
- Carriage: Aluminum barrel
- Twin gripping plate
- Attached puncture tool

Sold by unit

PRODUCT	QTY/BOX
91340250	10

Skeleton Steel Caulking Gun for 10 oz Cartridge

Specification(s):

- Mechanical advantage: 7:1
- Wear compensating device
- Retractable seal puncturing device
- Corrosion resistant epoxy finish
- Hex drive rod
- Built-in ladder hook
- Steel catch plate

Sold by unit

PRODUCT	QTY/BOX
913441001	12

Super Powerful Caulking Gun 10 oz Cartridge

Specification(s):

- Single component applicator
- Capacity: 10 oz / 310 ml
- Ratio 18:1
- Handle: Aluminum- Trigger: Metal
- Carriage: Metal- Twin gripping plate
- Riveted of reinforce carriage
- Attached puncture tool
- 360° rotary type handle
- Rating High Viscosity Material
- Easily press high viscosity materials

Sold by unit

PRODUCT	QTY/BOX
91343402	12

Cradle Barrel Caulking Gun 10 oz Cartridge

Specification(s):

- Single component applicator
- Capacity: 10 oz / 310 ml
- Ratio 12:1
- Handle: Aluminum alloy- Trigger: Metal
- Carriage: Metal- Twin gripping plate
- Spot welding carriage- Attached puncture tool
- 360° rotary type handle
- Adjustable screw to cut thrust gaps
- Rating Medium Viscosity Material

Sold by unit

PRODUCT	QTY/BOX
91346829	12

Richelieu Section 17D



- 1 SCREWS AND FASTENERS
- 2 FURNITURE EQUIPMENT
- 3 HINGES
- 4 SLIDES
- 5 CASTERS AND LEGS
- 6 KITCHEN SOLUTIONS
- 7 CLOSET SOLUTIONS
- 8 LIGHTING SOLUTIONS
- 9 SINKS AND FAUCETS
- 10 OFFICE
- 11 SLIDING DOORS
- 12 GLASS HARDWARE
- 13 PANELS AND SURFACES
- 14 EDGE-BANDING
- 15 CABINET DOORS AND DRAWERS
- 16 CORBELS AND FLOOR REGISTERS
- 17 GLUES, SILICONES, CAULK AND INSULATING
- 18 TOOLS AND SECURITY
- 19 FINISHING PRODUCTS AND SHOP SUPPLIES
- 20 COMMERCIAL DISPLAY HARDWARE
- 21 MOLDING, RAILING AND BATHROOM HARDWARE

CCRMUS 2017

I Glues, Silicones, Caulk and Insulating I

Silicone and Paintable Latex

Richelieu Section 17D

Skeleton Steel Caulking Gun 10 oz Cartridge

Specification(s):

- Single component applicator
- Capacity: 10 oz / 310 ml
- Ratio 17:1
- Handle: Zinc alloy
- Trigger: Metal
- Drip free device
- Single gripping plate
- Hardness rod- Hardness push disc
- Attached puncture tool
- Rating Low Viscosity Material
- Skeleton and ladder hook designs is easy to use

Sold by unit

PRODUCT	QTY/BOX
91340496	24

Cradle Barrel Extra Thrust Caulking Gun for 10 oz Cartridge

Specification(s):

- Mechanical advantage 18:1
- Wear compensating device
- Built-in ladder hook
- Catch plate – sintered steel
- Barrel turns – application around corners
- Medium-high viscosity materials
- Thumb activated instant pressure release

Sold by unit

PRODUCT	QTY/BOX
913441014	6

Cradle Barrel Caulking Gun for 10 oz Cartridge

Specification(s):

- Mechanical advantage: 12:1
- Switchable flow control
- Wear compensating device
- Built-in ladder hook
- High volume usage
- Catch plate – sintered steel
- Barrel turns – application around corners
- Low-medium viscosity materials
- Thumb activated instant pressure release

Sold by unit

PRODUCT	QTY/BOX
913441004	6

Caulking Gun with 20 oz Avon Tube

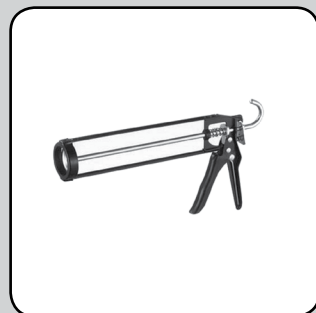
Specification(s):

- Supports 600 ml/300 ml sausages, 300 ml cartridges, and bulk applications
- Pre-configured for sausage application
- Plungers included for cartridge and bulk applications
- Mechanical Advantage: 12:1
- Adjustable flow control
- Plunger extension reduces waste
- Wear compensating device
- Drawn aluminum barrel
- Interchangeable pull handle
- Quick release end cap

Included Product(s):

- Three yellow cone nozzles
- One suspension hook
- One pin wrench

PRODUCT	QTY/BOX
913451001	1



I Glues, Silicones, Caulk and Insulating I

Silicone and Paintable Latex

Caulking Gun with 20 oz Aluminum Tube

Specification(s):

- Easily press high viscosity materials
- Single component applicator
- Capacity: 20 oz / 600 ml
- Thrust Ratio: 18:1
- Handle: Aluminum alloy

- Trigger: Metal
- Carriage: Aluminum barrel
- Twin gripping plate
- Attached puncture tool
- Rating
- High Viscosity Material

Included Product(s):

- 1 nozzle and 1 piston

Sold by unit

PRODUCT	QTY/BOX
91340250	10

Cradle Barrel Caulking Gun for 29 oz Cartridge

Specification(s):

- Mechanical Advantage: 12:1
- Adjustable flow control
- Wear compensating device
- Built-in suspension hook

- Catch plate – sintered steel
- Barrel rotates for application in corners
- Low-medium viscosity materials
- Thumb activated instant pressure release

Sold by unit

PRODUCT	QTY/BOX
913441002	3

Cradle Barrel Caulking Gun for 29 oz Cartridge

Specification(s):

- Single component applicator
- Ratio 18:1
- Capacity: 29 oz / 856 ml
- Handle: Aluminum- Trigger: Metal

- Carriage: Metal- Twin gripping plate
- Riveted of reinforce carriage
- Attached puncture tool
- 360° rotary type handle
- Rating High Viscosity Material

Sold by unit

PRODUCT	QTY/BOX
91343405	12

Richelieu Section 17D



- 1 SCREWS AND FASTENERS
- 2 FURNITURE EQUIPMENT
- 3 HINGES
- 4 SLIDES
- 5 CASTERS AND LEGS
- 6 KITCHEN SOLUTIONS
- 7 CLOSET SOLUTIONS
- 8 LIGHTING SOLUTIONS
- 9 SINKS AND FAUCETS
- 10 OFFICE
- 11 SLIDING DOORS
- 12 GLASS HARDWARE
- 13 PANELS AND SURFACES
- 14 EDGE-BANDING
- 15 CABINET DOORS AND DRAWERS
- 16 CORBELS AND FLOOR REGISTERS
- 17 GLUES, SILICONES, CAULK AND INSULATING
- 18 TOOLS AND SECURITY
- 19 FINISHING PRODUCTS AND SHOP SUPPLIES
- 20 COMMERCIAL DISPLAY HARDWARE
- 21 MOLDING, RAILING AND BATHROOM HARDWARE

CCRMUS 2017

I Glues, Silicones, Caulk and Insulating I

Silicone and Paintable Latex

Richelieu Section 17D

Cordless Caulking Gun 300 ml Cartridge

Ideal for quick and precise application of caulking and sealants. Anti-drip function eliminates residual pressure on caulking tube to prevent caulking from escaping when the trigger is released. Variable speed dial allows operator to set maximum dispensing speed while the variable speed trigger enables fine adjustment for maximum control and precision in a wide range of applications. 360 degrees rotating tube tray allows operator to adjust positioning based on materials or application. Overload protection feature with warning light prevents motor burnout caused by overloading. NEW battery protection system provides over-discharge, temperature and circuit protection for enhanced performance, battery cycle life and overall battery life. LED job light with pre-glow and afterglow feature. Ergonomic soft rubber grip design for vibration absorption and comfortable operation.

Specification(s):

- Accepts standard 300 ml cartridges
- Battery Capacities: 18V (3.0 Ah) Li-Ion, 18V (Compact) Li-Ion
- Max Pushing Force: 1,100 lb (5,000 N)
- Compatible Sealant Size: 300 ml Cartridge
- Dimensions (LxWxH): 15-7/8" x 4-1/4" x 11-1/8" (404 mm x 108 mm x 281 mm)
- Net Weight: 5.1 lb (2.3 kg)
- Shipping Weight: 16.0 lb (7.3 kg)

Included Product(s):

- 2 each 18V (3.0Ah) Li-Ion Batteries BL1830
- 1 Charger
- 1 Battery cover
- 1 Safety goggle
- 1 Tool bag

PRODUCT	QTY/BOX
MKTLXGC01	1

NewTip for Caulk and Adhesive

The NewTip gives new life to your tubes clogged of caulking and adhesive. Simply slice off the old tip and press the NewTip in place. The universal fit eliminates leaks in standard caulking tubes and solves the problem of dried up tips.

Application: Ideal for caulking and adhesives.

Specification(s):

- Fits any standard caulking tube
- Works with almost any material
- 4" long tip – great range and flow

PRODUCT	QTY/BOX
918950	1

Caulked N'Ready Caulking Gun Support

Your caulking is where you need it! Tired of caulk ooze? NEVER AGAIN! Tired of a clogged tip? NEVER AGAIN! Caulked N'Ready will make you love your caulking gun instead of loathe it. The Caulked N'Ready fits on your belt, hangs on your pocket, and can be clipped to your workbench or truck. You won't realize how much you needed it until someone STEALS it! Clog-free! Mess-free! Hands-free!

PRODUCT	QTY/BOX
918865	1

