

Sinks, Washbasins, Faucets and Accessories

Kitchen Products

Section 9A



Bathroom Products

Section 9B



SECTION 9

SCREWS AND FASTENERS	1
FURNITURE EQUIPMENT	2
HINGES	3
SLIDES	4
CASTERS AND LEGS	5
KITCHEN SOLUTIONS	6
CLOSET SOLUTIONS	7
LIGHTING SOLUTIONS	8
SINKS AND FAUCETS	9
OFFICE	10
SLIDING DOORS SYSTEMS	11
GLASS HARDWARE	12
PANELS AND SURFACES	13
EDGEBANDING	14
CABINET DOORS AND DRAWERS	15
CORBELS, FLOOR REGISTERS AND WINE CELLARS	16
GLUES, SILICONES, CAULK AND INSULATING	17
TOOLS AND SECURITY	18
FINISHING PRODUCTS, ABRASIVES AND SHOP SUPPLIES	19
COMMERCIAL DISPLAY HARDWARE	20
MOLDING, RAILING AND BATHROOM PARTITION HARDWARE	21

Kitchen Products

Stainless Steel Undermount or Drop-in



Richelieu Section 9A

Discover the new Riveo stainless steel from Richelieu, an attractive selection of models that are practical and easy to install. These models are designed to maximize space, bringing you comfort and pleasure in the kitchen. CUPC certification

- Made of premium type 304 stainless steel
- A soundshield undercoating maximizes sound dampening and inhibits condensation
- Lifetime warranty
- All RIVEO sinks includes drain strainer and a cutting template included

Riveo Sink Single

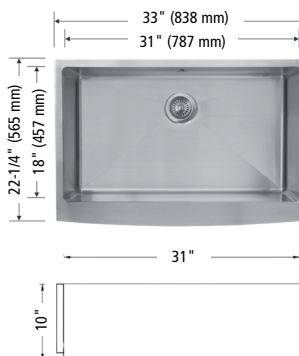
Specification(s):

- Installation Type: Undermount or Drop-in and can also be installed top-mounted
- Depth (Front to Back): 22-1/4"
- Width: 33"
- Depth of Bowl: 10"

- Minimum Cabinet Size: 36"
- Gauge and Chrome-Nickel Content: 16 Gauge, 18/8 Chrome-Nickel Content
- Finish: Stainless Steel

PRODUCT

3814170



Riveo Sink Double

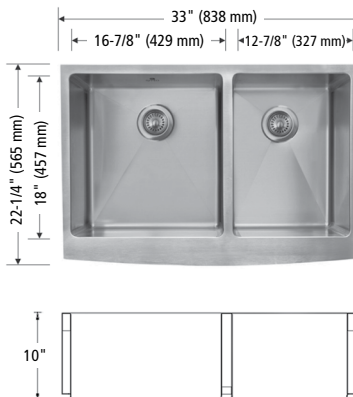
Specification(s):

- Installation Type: Undermount or Drop-in
- Depth (Front to Back): 22-1/4"
- Width: 33"
- Depth of Bowl: 10"

- Minimum Cabinet Size: 36"
- Gauge and Chrome-Nickel Content: 16 Gauge, 18/8 Chrome-Nickel Content
- Finish: Stainless Steel

PRODUCT

3813170



Kitchen Products

Stainless Steel Undermount



Discover the new Riveo stainless steel from Richelieu, an attractive selection of models that are practical and easy to install. These models are designed to maximize space, bringing you comfort and pleasure in the kitchen. CUPC certification

- Made of premium type 304 stainless steel
- A soundshield undercoating maximizes sound dampening and inhibits condensation
- Lifetime warranty
- All RIVEO sinks includes drain strainer and a cutting template included

Riveo Sink Single

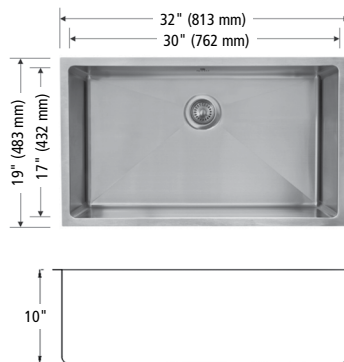
Specification(s):

- Installation Type: Undermount
- Depth (Front to Back): 19"
- Width: 32"
- Depth of Bowl: 10"

- Minimum Cabinet Size: 33"
- Gauge and Chrome-Nickel Content: 18/8 Chrome-Nickel Content, 18 Gauge
- Finish: Stainless Steel

PRODUCT

3821U170



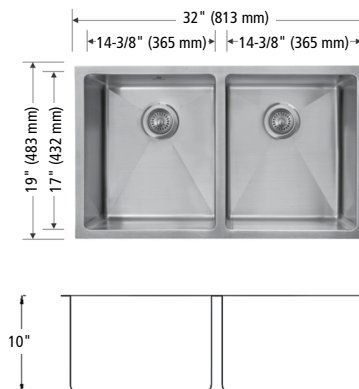
Riveo Sink Double

Specification(s):

- Installation Type: Undermount
- Depth (Front to Back): 19"
- Width: 32"
- Depth of Bowl: 10"
- Minimum Cabinet Size: 33"
- Gauge and Chrome-Nickel Content: 18 Gauge, 18/8 Chrome-Nickel Content
- Finish: Stainless Steel

PRODUCT

3815U170



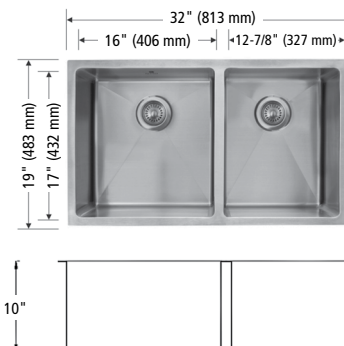
Riveo Sink Double

Specification(s):

- Installation Type: Undermount
- Depth (Front to Back): 19"
- Width: 32"
- Depth of Bowl: 10"
- Minimum Cabinet Size: 33"
- Gauge and Chrome-Nickel Content: 18/8 Chrome-Nickel Content, 18 Gauge
- Finish: Stainless Steel

PRODUCT

3816U170



Richelieu Section 9A



- 1 SCREWS AND FASTENERS
- 2 FURNITURE EQUIPMENT
- 3 HINGES
- 4 SLIDES
- 5 CASTERS AND LEGS
- 6 KITCHEN SOLUTIONS
- 7 CLOSET SOLUTIONS
- 8 LIGHTING SOLUTIONS
- 9 SINKS AND FAUCETS
- 10 OFFICE
- 11 SLIDING DOORS
- 12 GLASS HARDWARE
- 13 PANELS AND SURFACES
- 14 EDGE-BANDING
- 15 CABINET DOORS AND DRAWERS
- 16 CORBELS AND FLOOR REGISTERS
- 17 GLUES, SILICONES, CAULK AND INSULATING
- 18 TOOLS AND SECURITY
- 19 FINISHING PRODUCTS AND SHOP SUPPLIES
- 20 COMMERCIAL DISPLAY HARDWARE
- 21 MOLDING, RAILING AND BATHROOM HARDWARE

CCRMUS 2017

Kitchen Products

Stainless Steel Undermount

BLANCO

Blanco Sink – Performa U 1

Immerse yourself in the simplicity, style and sophistication of our versatile single bowl. With premium stainless steel, sound-deadening insulation and a variety of custom accessories, this spacious bowl is sure to enhance any kitchen. Our stainless sinks feature a polished satin finish which is exclusively made in Germany. This signature finish is the result of an extensive polishing process that creates an extremely consistent and luxurious appearance that is also smooth, hygienic, and extremely easy to clean.

- This design allows easy installation in standard 25" countertops. Sound-deadening pads installed
- Cutout Size: Template provided with approximate 1/8" reveal
- Limited lifetime warranty
- Code/standards compliance:
 - ASME 112.19.3-00
 - IAPMO/UPC listed

Specification(s):

- Installation Type: Undermount
- Sink Type: Single
- Depth (Front to Back): 19"
- Width: 32"
- Depth of Bowl: 10"
- Minimum Cabinet Size: 36"

Included Product(s):

Undermount clips are provided.

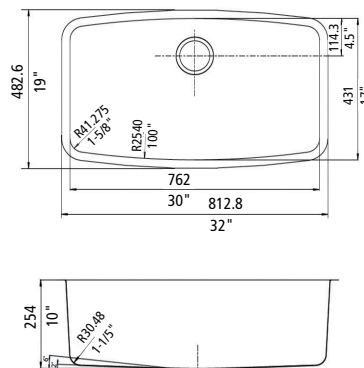
PRODUCT

4801U170

Suggested Product(s):

4829170 – Blanco Sink Grid, 4852170 – Blanco Cleaner for Stainless Steel, 4850170 – Blanco Strainer

- Gauge and Chrome-Nickel Content:
18 Gauge, 18/10 Chrome-Nickel Content
- Finish: Polished Satin



Blanco Sink Grid

Custom-fitted stainless steel bottom grids offer protection for your sink from dishes and utensils. An opening in the grid provides easy access to the drain. Stainless steel grids can be washed in the dishwasher. These heat-resistant grids can also be used on countertops. Grid with protective bumpers and feet. 1-year limited warranty.

Specification(s):

- Depth (Front to Back): 15-1/8"
- Width: 28-3/8"
- Material: Stainless Steel
- Finish: Stainless Steel

PRODUCT

4829170

Suggested Product(s):

4801U170 – Blanco Sink - Performa U1

Strainer

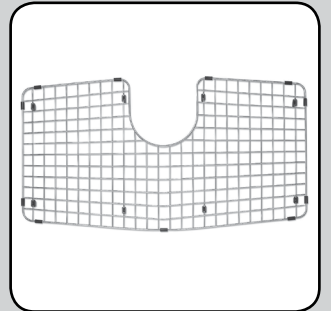
Specification(s):

- Width: 3-1/2"
- Material: Stainless Steel
- Finish: Stainless Steel

PRODUCT

4850170

Richelieu Section 9A



Kitchen Products

Stainless Steel Undermount

BLANCO

Blanco Sink – Wave U 1

Specification(s):

- Installation Type: Undermount
- Sink Type: Single
- Depth (Front to Back): 20-15/32"
- Width: 22-7/16"
- Depth of Bowl: 8"

- Minimum Cabinet Size: 27"
- Gauge and Chrome-Nickel Content: 18 Gauge, 18/10 Chrome-Nickel Content
- Finish: Polished Satin

Included Product(s):

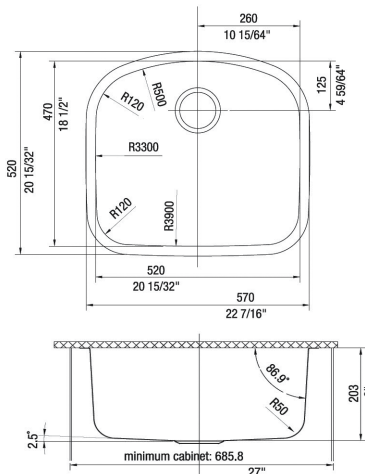
Undermount clips are provided.

PRODUCT

4802U170

Suggested Product(s):

4830170 – Blanco Sink Grid, 4852170 – Blanco Cleaner for Stainless Steel, 4850170 – Blanco Strainer



Blanco Sink Grid

Specification(s):

- For Large Bowl Sinks
- Depth (Front to Back): 17"
- Width: 18-1/4"
- Material: Stainless Steel

PRODUCT

4830170

Suggested Product(s):

4802U170 – Blanco Sink - Wave U1

Strainer

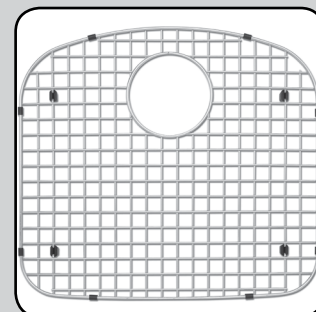
Specification(s):

- Width: 3-1/2"
- Material: Stainless Steel
- Finish: Stainless Steel

PRODUCT

4850170

Richelieu Section 9A



- 1 SCREWS AND FASTENERS
- 2 FURNITURE EQUIPMENT
- 3 HINGES
- 4 SLIDES
- 5 CASTERS AND LEGS
- 6 KITCHEN SOLUTIONS
- 7 CLOSET SOLUTIONS
- 8 LIGHTING SOLUTIONS
- 9 SINKS AND FAUCETS
- 10 OFFICE
- 11 SLIDING DOORS
- 12 GLASS HARDWARE
- 13 PANELS AND SURFACES
- 14 EDGE-BANDING
- 15 CABINET DOORS AND DRAWERS
- 16 CORBELS AND FLOOR REGISTERS
- 17 GLUES, SILICONES, CAULK AND INSULATING
- 18 TOOLS AND SECURITY
- 19 FINISHING PRODUCTS AND SHOP SUPPLIES
- 20 COMMERCIAL DISPLAY HARDWARE
- 21 MOLDING, RAILING AND BATHROOM HARDWARE

CCRMUS 2017

Kitchen Products

Stainless Steel Undermount

BLANCO

Richelieu Section 9A

Blanco Sink – Spex II Plus 1

This sink is sure to exceed your expectations. Our stainless sinks feature a polished satin finish which is exclusively made in Germany. This signature finish is the result of an extensive polishing process that creates an extremely consistent and luxurious appearance that is also smooth, hygienic, and extremely easy to clean.

- Sound-deadening pads installed
- Cutout size: Template provided with approximate 1/8" reveal
- Limited lifetime warranty

Specification(s):

- Installation Type: Undermount
- Sink Type: Single
- Depth (Front to Back): 18"
- Width: 21"
- Depth of Bowls: 8-1/2"

- Minimum Cabinet Size: 27"
- Gauge and Chrome-Nickel Content: 18/8 Chrome-Nickel Content, 18 Gauge
- Finish: Satin

Included Product(s):

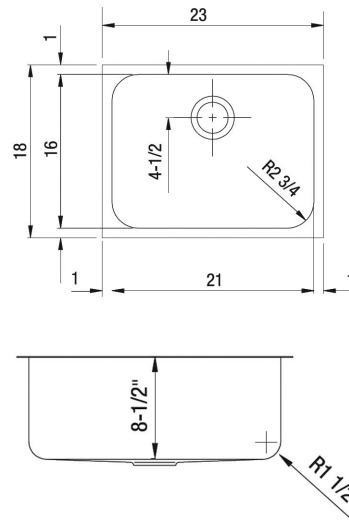
Undermount clips are provided.

PRODUCT

4805U170

Suggested Product(s):

4832170 – Blanco Sink Grid, 4850170 – Blanco Strainer



Blanco Sink Grid

Specification(s):

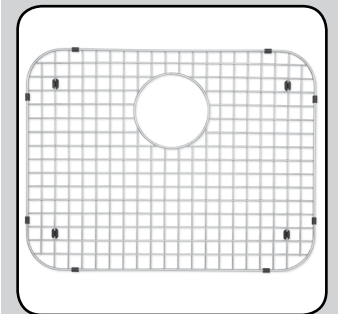
- Depth (Front to Back): 15-17/32"
- Width: 20-7/16"
- Material: Stainless Steel

PRODUCT

4832170

Suggested Product(s):

4805U170 – Blanco Sink - Spex II Plus1



Strainer

Specification(s):

- Width: 3-1/2"
- Material: Stainless Steel
- Finish: Stainless Steel

PRODUCT

4850170



Kitchen Products

Stainless Steel Undermount

BLANCO

Blanco Sink – Supreme U 3/4

Create a customized look that reflects your personal style. Individual bowls may be used alone or as components of a one-of-a-kind sink. And thanks to our luxurious polished sating finish, you'll also enjoy a beautiful, easy-to-clean surface. Our stainless sinks feature a polished satin finish which is exclusively made in Germany. This signature finish is the result of an extensive polishing process that creates an extremely consistent and luxurious appearance that is also smooth, hygienic, and extremely easy to clean.

- Sound-deadening pads installed
- Cutout size: Template provided with approximate 1/8" reveal
- Limited lifetime warranty
- Code/standards compliance:
 - ASME 112.19.3-00
 - IAPMO/UPC listed

Specification(s):

- Installation Type: Undermount
- Sink Type: Single
- Depth (Front to Back): 17-3/4"
- Width: 15-9/16"
- Depth of Bowls: 7"

Included Product(s):

Undermount clips are provided.

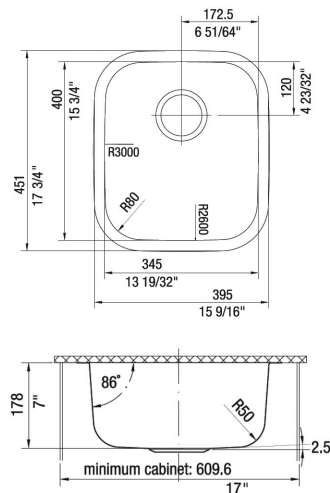
PRODUCT

4804U170

Suggested Product(s):

4831170 – Blanco Sink Grid, 4850170 – Blanco Strainer

- Minimum Cabinet Size: 18"
- Gauge and Chrome-Nickel Content: 18 Gauge, 18/10 Chrome-Nickel Content
- Finish: Polished Satin



Blanco Sink Grid

Specification(s):

- For Small Bowl Sinks
- Depth (Front to Back): 13-29/32"
- Width: 11-7/8"
- Material: Stainless Steel

PRODUCT

4831170

Suggested Product(s):

4804U170 – Blanco Sink - Supreme U3/4

Strainer

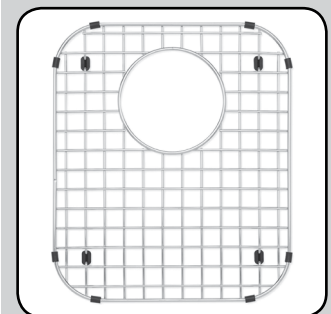
Specification(s):

- Width: 3-1/2"
- Material: Stainless Steel
- Finish: Stainless Steel

PRODUCT

4850170

Richelieu Section 9A



1
SCREWS
AND
FASTENERS

2
FURNITURE
EQUIPMENT

3
HINGES

4
SLIDES

5
CASTERS
AND LEGS

6
KITCHEN
SOLUTIONS

7
CLOSET
SOLUTIONS

8
LIGHTING
SOLUTIONS

9
SINKS
AND
FAUCETS

10
OFFICE

11
SLIDING
DOORS

12
GLASS
HARDWARE

13
PANELS
AND
SURFACES

14
EDGE-
BANDING

15
CABINET
DOORS
AND
DRAWERS

16
CORBELS
AND FLOOR
REGISTERS

17
GLUES,
SILICONES,
CAULK AND
INSULATING

18
TOOLS
AND
SECURITY

19
FINISHING
PRODUCTS
AND SHOP
SUPPLIES

20
COMMERCIAL
DISPLAY
HARDWARE

21
MOLDING,
RAILING AND
BATHROOM
HARDWARE

CCRMUS 2017

Page 9A7

Kitchen Products

Stainless Steel Undermount

BLANCO

Blanco Sink – Stellar U Super

In the Blanco Stellar collection, innovation and durability come standard in shapes for the traditional American home.

- The refined brushed finish (RBF) is superior to the standard American market finish, yet perfectly suits traditional North American home decor
- Limited lifetime warranty
- Design allowing easy installation in standard 25" countertops
- Sound-deadening coating

Specification(s):

- Installation Type: Undermount
- Sink Type: Single
- Depth (Front to Back): 18"
- Width: 28"
- Depth of Bowls: 9"

- Minimum Cabinet Size: 33"
- Gauge and Chrome-Nickel Content: 18/10 Chrome-Nickel Content, 18 Gauge
- Finish: Refined Brushed Stainless Steel

Included Product(s):

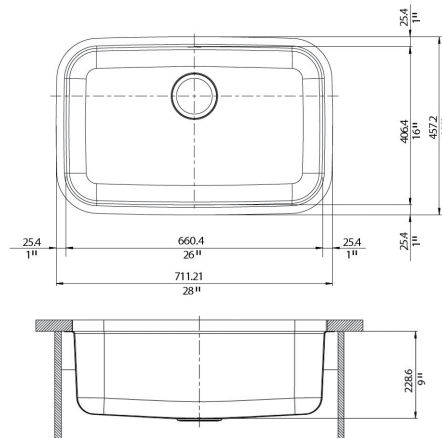
Cutout size: Template provided for undermount installation.

PRODUCT

4809U170

Suggested Product(s):

4836170 – Blanco Sink Grid, 4850170 – Blanco Strainer



Blanco Sink Grid

Specification(s):

- Depth (Front to Back): 14-1/2"
- Width: 24-3/4"
- Material: Stainless Steel

PRODUCT

4836170

Suggested Product(s):

4809U170 – Blanco Sink - Stellar U Super

Strainer

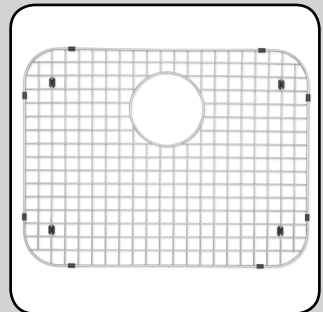
Specification(s):

- Width: 3-1/2"
- Material: Stainless Steel
- Finish: Stainless Steel

PRODUCT

4850170

Richelieu Section 9A



Kitchen Products

Stainless Steel Undermount

BLANCO

Blanco Sink – Stellar U 1 Medium

In the Blanco Stellar collection, innovation and durability come standard in shapes for the traditional American home.

- The refined brushed finish (RBF) is superior to the standard American market finish, yet perfectly suits traditional American home decor
- Limited lifetime warranty
- Design allowing easy installation in standard 25" countertops
- Sound-deadening coating
- Code/standards compliance:
 - ASME 112.19.3-00
 - IAPMO/UPC listed

Specification(s):

- Installation Type: Undermount
- Sink Type: Single
- Depth (Front to Back): 18"
- Width: 25"
- Depth of Bowls: 8"
- Minimum Cabinet Size: 27"

Included Product(s):

Cutout size: Template provided for undermount installation.

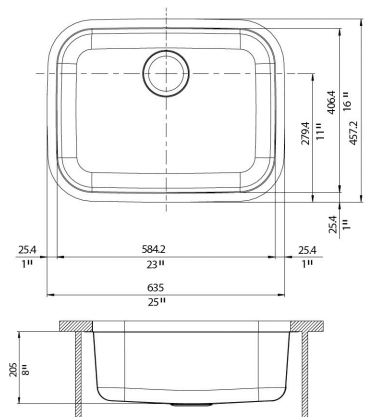
PRODUCT

4810U170

Suggested Product(s):

4837170 – Blanco Sink Grid, 4850170 – Blanco Strainer

- Gauge and Chrome-Nickel Content: 18/10 Chrome-Nickel Content, 18 Gauge
- Finish: Refined Brushed Stainless Steel



Blanco Sink Grid

Specification(s):

- Depth (Front to Back): 15-1/2"
- Width: 22-1/2"
- Material: Stainless Steel

PRODUCT

4837170

Suggested Product(s):

4810U170 – Blanco Sink

Strainer

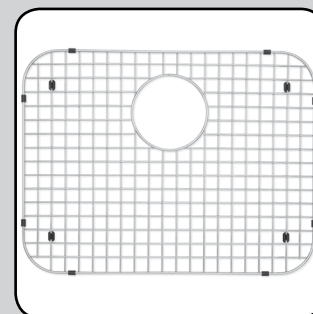
Specification(s):

- Width: 3-1/2"
- Material: Stainless Steel
- Finish: Stainless Steel

PRODUCT

4850170

Richelieu Section 9A



- 1 SCREWS AND FASTENERS
- 2 FURNITURE EQUIPMENT
- 3 HINGES
- 4 SLIDES
- 5 CASTERS AND LEGS
- 6 KITCHEN SOLUTIONS
- 7 CLOSET SOLUTIONS
- 8 LIGHTING SOLUTIONS
- 9 SINKS AND FAUCETS
- 10 OFFICE
- 11 SLIDING DOORS
- 12 GLASS HARDWARE
- 13 PANELS AND SURFACES
- 14 EDGE-BANDING
- 15 CABINET DOORS AND DRAWERS
- 16 CORBELS AND FLOOR REGISTERS
- 17 GLUES, SILICONES, CAULK AND INSULATING
- 18 TOOLS AND SECURITY
- 19 FINISHING PRODUCTS AND SHOP SUPPLIES
- 20 COMMERCIAL DISPLAY HARDWARE
- 21 MOLDING, RAILING AND BATHROOM HARDWARE

Kitchen Products

Stainless Steel Undermount

BLANCO

Blanco Sink – Stellar U Equal

Classic styling and fine craftsmanship at an attainable price. With a refined brushed finish, our most popular shapes are designed to suit a variety of applications and cabinet sizes.

- This design allows easy installation in standard 25" countertops. The refined brushed finish (RBF) is superior to the standard North American market finish, yet perfectly suits a traditional American home decor
- Limited lifetime warranty
- Cutout size: Template provided for undermount installation
- Sound-deadening coating
- Code/standards compliance:
 - ASME 112.19.3-00
 - IAPMO/UPC listed

Specification(s):

- Installation Type: Undermount
- Sink Type: Double
- Depth (Front to Back): 18-1/2"
- Width: 33-1/3"
- Depth of Bowls: 8"

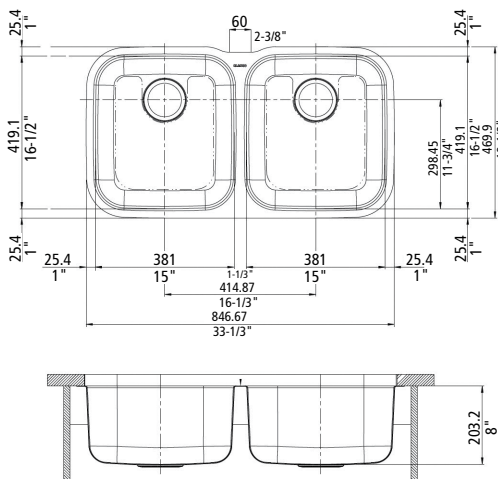
PRODUCT

4806U170

Suggested Product(s):

4833170 – Blanco Sink Grid, 4850170 – Blanco Strainer

- Minimum Cabinet Size: 36"
- Gauge and Chrome-Nickel Content: 18/10 Chrome-Nickel Content, 18 Gauge
- Finish: Refined Brushed Stainless Steel



Blanco Sink Grid

Specification(s):

- Depth (Front to Back): 13-3/4"
- Width: 15-1/4"
- Material: Stainless Steel

PRODUCT

4833170

Suggested Product(s):

4806U170 – Blanco Sink - Stellar U Equal

Strainer

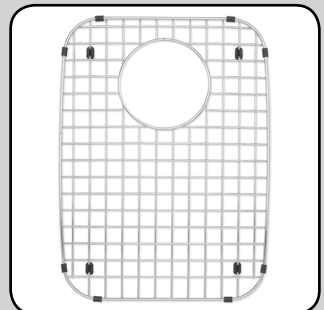
Specification(s):

- Width: 3-1/2"
- Material: Stainless Steel
- Finish: Stainless Steel

PRODUCT

4850170

Richelieu Section 9A



Kitchen Products

Stainless Steel Undermount

BLANCO

Blanco Sink – Stellar U 1.6

The refined brushed finish (RBF) is superior to the standard American market finish, yet perfectly suits a traditional North American home decor.

- Limited lifetime warranty
- Sound-deadening coating

Specification(s):

- Installation Type: Undermount
- Sink Type: Double
- Depth (Front to Back): 20-1/2"
- Width: 31-3/4"
- Secondary Bowl Depth: 7"

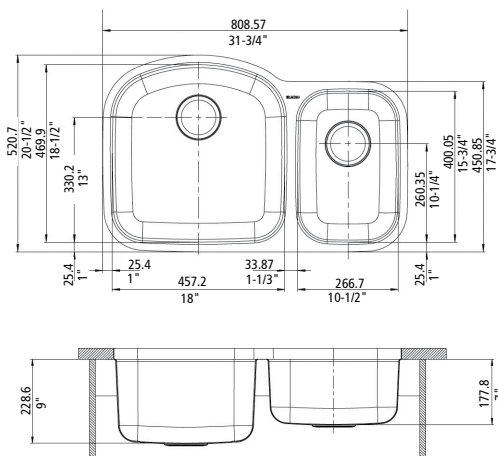
PRODUCT

4807U170

Suggested Product(s):

4834170 – Blanco Sink Grid, 4850170 – Blanco Strainer

- Main Bowl Depth: 9"
- Minimum Cabinet Size: 36"
- Gauge and Chrome-Nickel Content: 18 Gauge, 18/10 Chrome-Nickel Content
- Finish: Refined Brushed Stainless Steel



Blanco Sink Grid

Specification(s):

- For Large Bowl Sinks
- Depth (Front to Back): 17"
- Width: 16-1/2"
- Material: Stainless Steel

PRODUCT

4834170

Suggested Product(s):

4807U170 – Blanco Sink - Stellar U1.6

Strainer

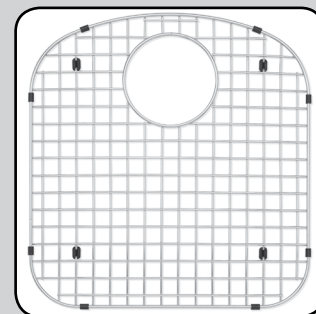
Specification(s):

- Width: 3-1/2"
- Material: Stainless Steel
- Finish: Stainless Steel

PRODUCT

4850170

Richelieu Section 9A



CCRMUS 2017

Kitchen Products

Stainless Steel Undermount

BLANCO

Richelieu Section 9A

Blanco Sink – Stellar U 1-3/4

Specification(s):

- Installation Type: Undermount
- Sink Type: Double
- Depth (Front to Back): 20-1/2"
- Width: 32-3/8"
- Secondary Bowl Depth: 7"
- Main Bowl Depth: 9"
- Minimum Cabinet Size: 36"
- Gauge and Chrome-Nickel Content: 18/10 Chrome-Nickel Content, 18 Gauge
- Finish: Refined Brushed Stainless Steel

PRODUCT

4808U170

Suggested Product(s):

4835170 – Blanco Sink Grid for Left Bowl,
4839170 – Blanco Sink Grid for Right Bowl,
4850170 – Blanco Strainer

Blanco Sink Grid

Specification(s):

- For Large Bowl Sinks
- Depth (Front to Back): 13-5/8"
- Width: 17-1/8"
- Material: Stainless Steel

PRODUCT

4835170

Suggested Product(s):

4808U170 – Blanco Sink - Stellar U1-3/4

Blanco Sink Grid

Specification(s):

- For Small Bowl Sinks
- Depth (Front to Back): 15-1/2"
- Width: 13-1/2"
- Material: Stainless Steel

PRODUCT

4839170

Suggested Product(s):

4808U170 – Blanco Sink - Stellar U1-3/4

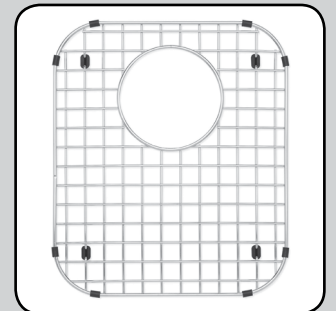
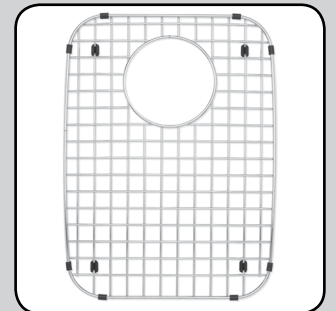
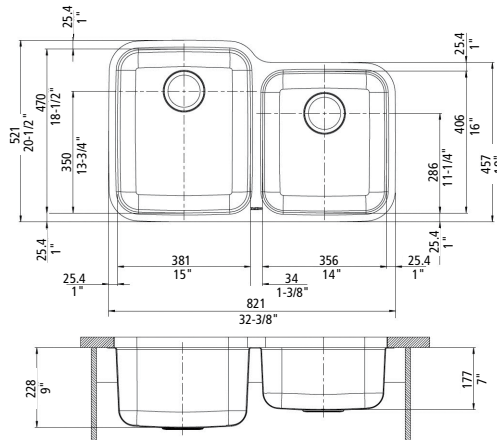
Strainer

Specification(s):

- Width: 3-1/2"
- Material: Stainless Steel
- Finish: Stainless Steel

PRODUCT

4850170



Kitchen Products

Stainless Steel Drop-in

BLANCO

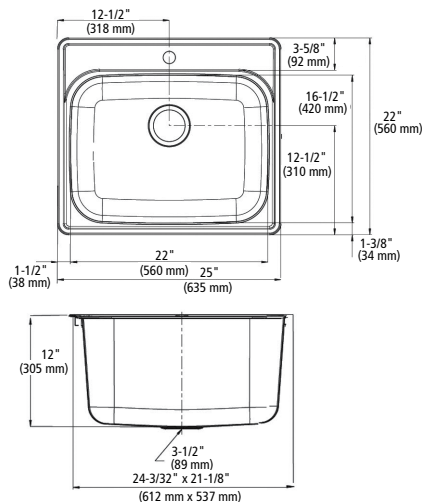
Blanco Sink – Essential Laundry

Transform your laundry room into a work of art. Created with premium 18-gauge stainless steel, this hardworking sink features an extra-deep bowl for soaking, scrubbing, or washing delicates. Our stainless sinks feature a polished satin finish which is our excellence German design. This signature finish is the result of an extensive polishing process that creates an extremely consistent and luxurious appearance that is also smooth, hygienic, and extremely easy to clean.

- Limited lifetime warranty
- Sound-deadening pads
- Code/standards compliance:
 - ASME 112.19.3-00
 - IAPMO/UPC listed

Specification(s):

- Installation Type: Drop-in
- Sink Type: Single
- Depth (Front to Back): 22"
- Width: 25"
- Depth of Bowl: 12"
- Minimum Cabinet Size: 24"
- Gauge and Chrome-Nickel Content: 18/10 Chrome-Nickel Content, 18 Gauge
- Finish: Polished Satin



PRODUCT

4803170

Suggested Product(s):

4852170 – Blanco Cleaner for Stainless Steel, 4850170 – Blanco Strainer

Strainer

Specification(s):

- Width: 3-1/2"
- Material: Stainless Steel
- Finish: Stainless Steel

PRODUCT

4850170

Richelieu Section 9A



1	SCREWS AND FASTENERS
2	FURNITURE EQUIPMENT
3	HINGES
4	SLIDES
5	CASTERS AND LEGS
6	KITCHEN SOLUTIONS
7	CLOSET SOLUTIONS
8	LIGHTING SOLUTIONS
9	SINKS AND FAUCETS
10	OFFICE
11	SLIDING DOORS
12	GLASS HARDWARE
13	PANELS AND SURFACES
14	EDGE-BANDING
15	CABINET DOORS AND DRAWERS
16	CORBELS AND FLOOR REGISTERS
17	GLUES, SILICONES, CAULK AND INSULATING
18	TOOLS AND SECURITY
19	FINISHING PRODUCTS AND SHOP SUPPLIES
20	COMMERCIAL DISPLAY HARDWARE
21	MOLDING, RAILING AND BATHROOM HARDWARE

Kitchen Products

Silgranit® Undermount

BLANCO

Richelieu Section 9A

Sophisticated, yet simple. This spacious design easily conquers the demands of everyday life from sharp knives to red wine. Plus, its colorful, non-porous surface makes our super single bowl easy to clean and even harder to resist. SILGRANIT® II, crafted of 80% natural granite, features the look and feel of natural stone and resists scratches, stains, chips and heat. Colored all the way through, SILGRANIT® II won't fade in direct sunlight and is impervious to household acids and alkalis. And its advanced surface technology ensures that it is non-porous, easy to clean, and extremely hygienic.

- Heat-resistant up to 536 °F
- Resistant to scratches, stains, and all household acids and alkali solutions
- Limited lifetime warranty
- Code/standards compliance:
- ANSI Z124.6-97
- IAPMO/UPC listed

Blanco Sink – Precis U 1

- Installation Type: Undermount
- Sink Type: Single
- Depth (Front to Back): 19"
- Width: 32"
- Depth of Bowl: 9-1/2"
- Minimum Cabinet Size: 36"
- Design allows easy installation in standard 25" countertops
- Material: 80% Natural Granite

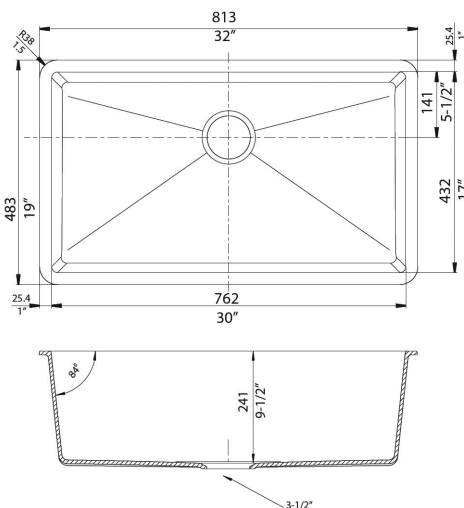
Included Product(s):

- Cutout size: Template provided with approximate 1/8" reveal
- Undermount clips are provided

PRODUCT	FINISH
4815U250	Café
4815U906	Anthracite

Suggested Product(s):

4842170 – Blanco Sink Grid, 4850250 – Blanco Strainer Café,
4850906 – Blanco Strainer Anthracite



Blanco Sink Grid

Specification(s):

- Depth (Front to Back): 14-9/16"
- Width: 27-9/16"
- Material: Stainless Steel

PRODUCT
4842170

Suggested Product(s):

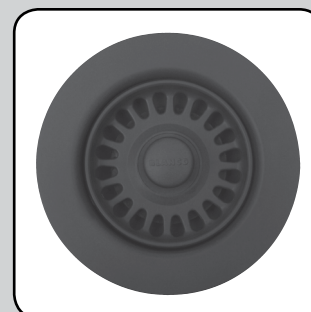
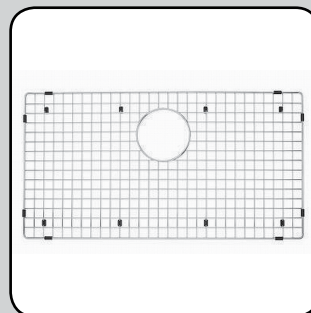
4815U250, 4815U906 – Blanco Sink - Precis U1

Strainer

Specification(s):

- Width: 3-1/2"
- Material: 80% Natural Granite

PRODUCT	FINISH
4850250	Café
4850906	Anthracite



Kitchen Products

Silgranit® Undermount

BLANCO

Blanco Sink – Diamond U 1-3/4

Specification(s):

- Installation Type: Undermount
- Sink Type: Double
- Depth (Front to Back): 19"
- Width: 32"
- Secondary Bowl Depth: 8"
- Main Bowl Depth: 9-1/2"
- Minimum Cabinet Size: 36"
- Material: 80% Natural Granite

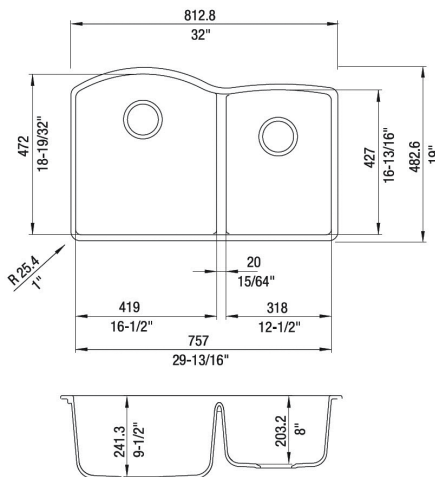
Included Product(s):

- Cutout size: Template provided with approximate 1/8" reveal
- Undermount clips are provided

PRODUCT	FINISH
4816U250	Café
4816U41	Biscuit
4816U906	Anthracite

Suggested Product(s):

4843170 – Blanco Sink Grid for Left Bowl, 4850250 – Blanco Strainer Café,
4850906 – Blanco Strainer Anthracite, 485041 – Blanco Strainer Biscuit



Blanco Sink Grid

Specification(s):

- Depth (Front to Back): 16-13/16"
- Width: 14-1/2"
- Material: Stainless Steel

PRODUCT
4843170

Suggested Product(s):

4819250, 4819906 – Blanco Sink - Diamond 1-3/4

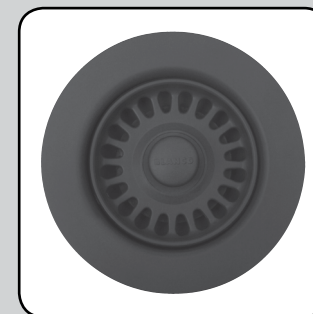
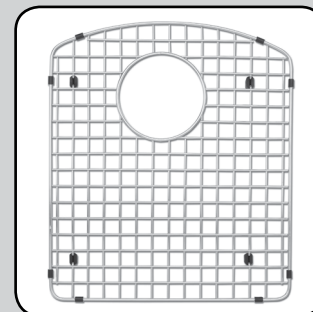
Strainer

Specification(s):

- Width: 3-1/2"
- Material: 80% Natural Granite

PRODUCT	FINISH
4850250	Café
485041	Biscuit
4850906	Anthracite

Richelieu Section 9A



- 1 SCREWS AND FASTENERS
- 2 FURNITURE EQUIPMENT
- 3 HINGES
- 4 SLIDES
- 5 CASTERS AND LEGS
- 6 KITCHEN SOLUTIONS
- 7 CLOSET SOLUTIONS
- 8 LIGHTING SOLUTIONS
- 9 SINKS AND FAUCETS
- 10 OFFICE
- 11 SLIDING DOORS
- 12 GLASS HARDWARE
- 13 PANELS AND SURFACES
- 14 EDGE-BANDING
- 15 CABINET DOORS AND DRAWERS
- 16 CORBELS AND FLOOR REGISTERS
- 17 GLUES, SILICONES, CAULK AND INSULATING
- 18 TOOLS AND SECURITY
- 19 FINISHING PRODUCTS AND SHOP SUPPLIES
- 20 COMMERCIAL DISPLAY HARDWARE
- 21 MOLDING, RAILING AND BATHROOM HARDWARE

CCRMUS 2017

Kitchen Products

Silgranit® Undermount

BLANCO

Blanco Sink – Diamond U 2

Specification(s):

- Installation Type: Undermount
- Sink Type: Double
- Depth (Front to Back): 19-1/4"
- Width: 32"
- Depth of Bowl: 9-1/2"
- Minimum Cabinet Size: 36"
- Material: 80% Natural Granite

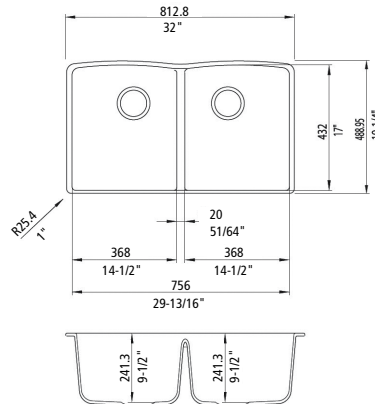
Included Product(s):

- Cutout size: Template provided with approximate 1/8" reveal
- Undermount clips are provided

PRODUCT	FINISH
4817U250	Café
4817U906	Anthracite

Suggested Product(s):

4848170 – Blanco Sink Grid for Left Bowl, 4846170 – Blanco Sink Grid for Right Bowl,
4850250 – Blanco Strainer Café, 4850906 – Blanco Strainer Anthracite



Blanco Sink Grid

Specification(s):

- Depth (Front to Back): 12-3/4"
- Width: 15-1/4"
- Material: Stainless Steel

PRODUCT
4848170

Suggested Product(s):

4817U250, 4817U906 – Blanco Sink - Diamond 2

Blanco Sink Grid

Specification(s):

- Depth (Front to Back): 12-3/4"
- Width: 15-1/4"
- Material: Stainless Steel

PRODUCT
4846170

Suggested Product(s):

4817U250, 4817U906 – Blanco Sink - Diamond 2

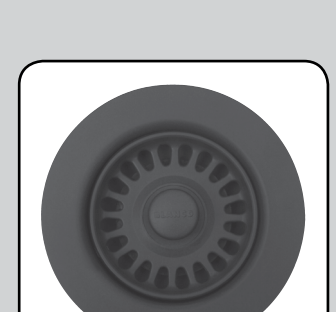
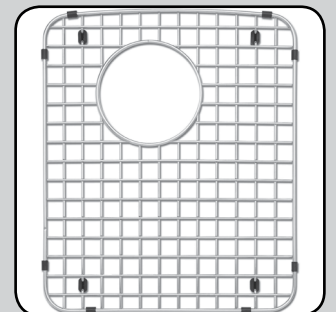
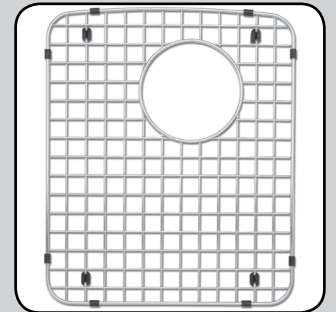
Strainer

Specification(s):

- Width: 3-1/2"
- Material: 80% Natural Granite

PRODUCT	FINISH
4850250	Café
4850906	Anthracite

Richelieu Section 9A



Kitchen Products

Silgranit® Undermount

BLANCO

Blanco Sink – Diamond 1 Super Single

Specification(s):

- Installation Type: Versatile dual-deck design can be installed drop-in or undermount
- Sink Type: Single
- Depth (Front to Back): 22"
- Width: 33-1/2"
- Depth of Bowl: 9-1/2"
- Minimum Cabinet Size: 33"
- Material: 80% Natural Granite
- Softly rounded drain grooves

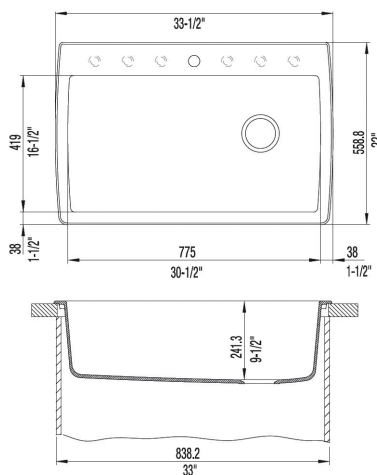
Included Product(s):

Template provided

PRODUCT	FINISH
4818250	Café
4818906	Anthracite

Suggested Product(s):

4847170 – Blanco Sink Grid, 4850250 – Blanco Strainer Café,
4850906 – Blanco Strainer Anthracite



Blanco Sink Grid

Specification(s):

- Depth (Front to Back): 14-1/4"
- Width: 28"
- Material: Stainless Steel

PRODUCT
4847170

Suggested Product(s):

4818250, 4818906 – Blanco Sink - Diamond 1 Super Single

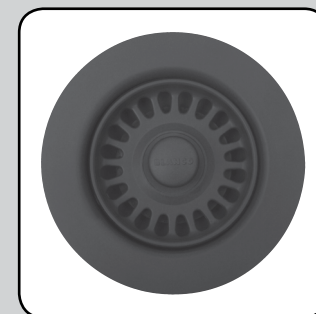
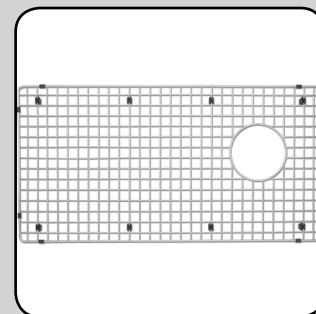
Strainer

Specification(s):

- Width: 3-1/2"
- Material: 80% Natural Granite

PRODUCT	FINISH
4850250	Café
4850906	Anthracite

Richelieu Section 9A



- 1 SCREWS AND FASTENERS
- 2 FURNITURE EQUIPMENT
- 3 HINGES
- 4 SLIDES
- 5 CASTERS AND LEGS
- 6 KITCHEN SOLUTIONS
- 7 CLOSET SOLUTIONS
- 8 LIGHTING SOLUTIONS
- 9 SINKS AND FAUCETS
- 10 OFFICE
- 11 SLIDING DOORS
- 12 GLASS HARDWARE
- 13 PANELS AND SURFACES
- 14 EDGE-BANDING
- 15 CABINET DOORS AND DRAWERS
- 16 CORBELS AND FLOOR REGISTERS
- 17 GLUES, SILICONES, CAULK AND INSULATING
- 18 TOOLS AND SECURITY
- 19 FINISHING PRODUCTS AND SHOP SUPPLIES
- 20 COMMERCIAL DISPLAY HARDWARE
- 21 MOLDING, RAILING AND BATHROOM HARDWARE

CCRMUS 2017

Kitchen Products

Silgranit® Drop-in

BLANCO

Richelieu Section 9A

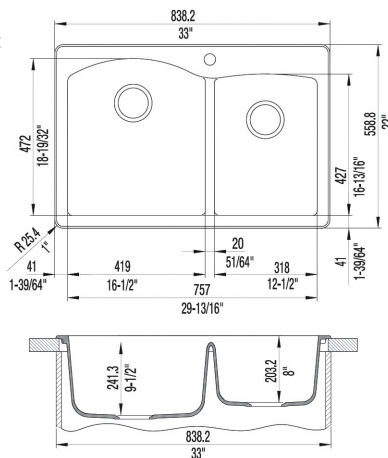
Blanco Sink – Diamond 1-3/4

Specification(s):

- Installation Type: Versatile dual deck design can be installed drop-in or undermount
- Sink Type: Double
- Depth (Front to Back): 22"
- Width: 33"
- Secondary Bowl Depth: 8"
- Main Bowl Depth: 9-1/2"
- Minimum Cabinet Size: 33"
- Material: 80% Natural Granite

Included Product(s):

Template provided.



PRODUCT	FINISH
4819250	Café
4819906	Anthracite

Suggested Product(s):

- 4843170 – Blanco Sink Grid for Left Bowl
- 4850250 – Blanco Strainer Café
- 4850906 – Blanco Strainer Anthracite

Blanco Sink Grid

Specification(s):

- Depth (Front to Back): 16-13/16"
- Width: 14-1/2"
- Material: Stainless Steel

PRODUCT
4843170

Suggested Product(s):

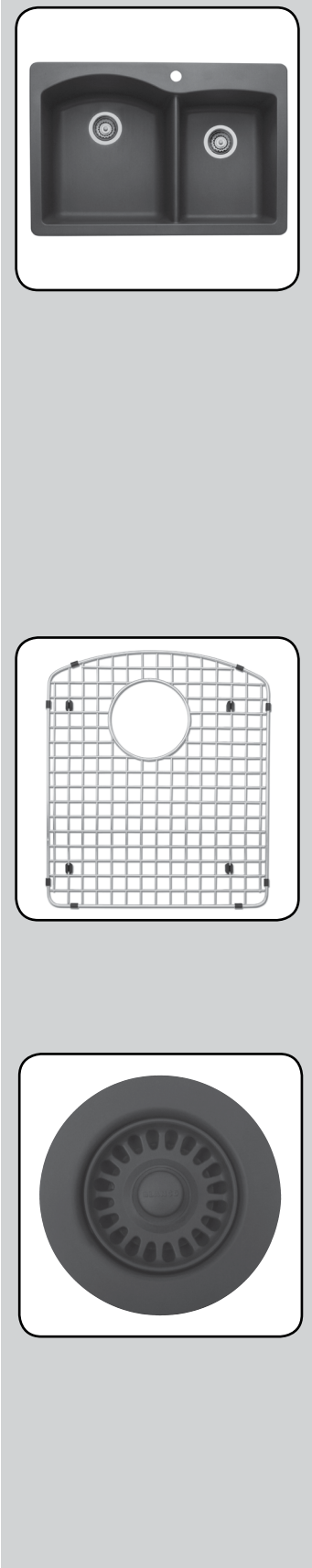
- 4819250, 4819906 – Blanco Sink - Diamond 1-3/4

Strainer

Specification(s):

- Width: 3-1/2"
- Material: 80% Natural Granite

PRODUCT	FINISH
4850250	Café
4850906	Anthracite



Kitchen Products

Silgranit® Drop-in

BLANCO

Blanco Sink – Diamond 2

Specification(s):

- Installation Type: Versatile dual-deck design can be installed drop-in or undermount
- Sink Type: Double
- Depth (Front to Back): 22"
- Width: 33"
- Depth of Bowl: 9-1/2"
- Minimum Cabinet Size: 33"
- Material: 80% Natural Granite

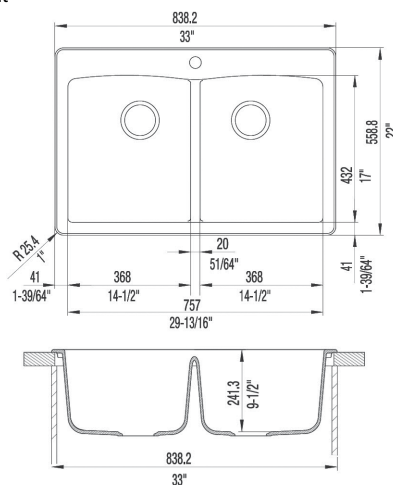
Included Product(s):

Template provided.

PRODUCT	FINISH
4820250	Café
4820906	Anthracite

Suggested Product(s):

4846170 – Blanco Sink Grid for Right Bowl,
4848170 – Blanco Sink Grid for Left Bowl,
4850250 – Blanco Strainer Café,
4850906 – Blanco Strainer Anthracite



Blanco Sink Grid

Specification(s):

- Depth (Front to Back): 12-3/4"
- Width: 15-1/4"
- Material: Stainless Steel

PRODUCT
4846170

Suggested Product(s):

4820250, 4820906 – Blanco Sink - Diamond 2

Blanco Sink Grid

Specification(s):

- Depth (Front to Back): 12-3/4"
- Width: 15-1/4"
- Material: Stainless Steel

PRODUCT
4848170

Suggested Product(s):

4820250, 4820906 – Blanco Sink - Diamond 2

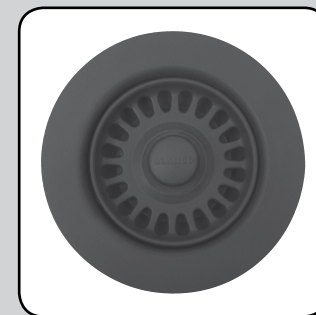
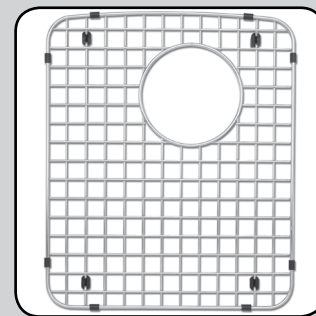
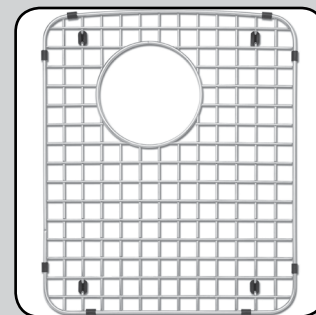
Strainer

Specification(s):

- Width: 3-1/2"
- Material: 80% Natural Granite

PRODUCT	FINISH
4850250	Café
4850906	Anthracite

Richelieu Section 9A



- 1 SCREWS AND FASTENERS
- 2 FURNITURE EQUIPMENT
- 3 HINGES
- 4 SLIDES
- 5 CASTERS AND LEGS
- 6 KITCHEN SOLUTIONS
- 7 CLOSET SOLUTIONS
- 8 LIGHTING SOLUTIONS
- 9 SINKS AND FAUCETS
- 10 OFFICE
- 11 SLIDING DOORS
- 12 GLASS HARDWARE
- 13 PANELS AND SURFACES
- 14 EDGE-BANDING
- 15 CABINET DOORS AND DRAWERS
- 16 CORBELS AND FLOOR REGISTERS
- 17 GLUES, SILICONES, CAULK AND INSULATING
- 18 TOOLS AND SECURITY
- 19 FINISHING PRODUCTS AND SHOP SUPPLIES
- 20 COMMERCIAL DISPLAY HARDWARE
- 21 MOLDING, RAILING AND BATHROOM HARDWARE

CCRMUS 2017

Kitchen Products

Riveo Faucets



Richelieu Section 9A

Riveo Kitchen Faucet One Jet Pull-Out Spray

The new range of Riveo faucets combines style, performance and reliability. Ergonomic faucets with contemporary or classic styles, you will find the widest selection of designs that will appeal to all.

- 35 mm ceramic disc cartridge
- For one or three-hole sinks
- CUPC certification
- Single lever faucet

Specification(s):

- Material: Solid Brass Construction
- Drilling: 1-3/8"
- Height: 21-7/8"
- Projection: 7-3/4"
- Other Features: Pull-down

Included Product(s):

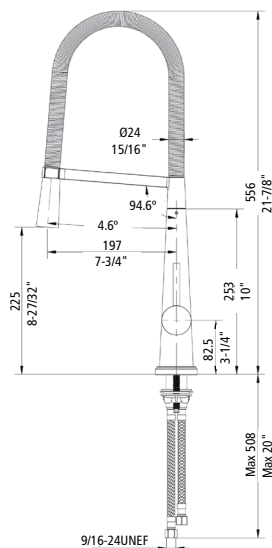
Cover plate included

PRODUCT	FINISH
A220140	Chrome
A220195	Brushed Nickel

Suggested Product(s):

A222140 – Chrome Soap Dispenser

A222195 – Stainless Steel Soap Dispenser



Riveo Kitchen Faucet Two Jet Pull-Out Spray

Three-piece kitchen faucet. The new line of Riveo faucets combines style, performance and reliability. Ergonomic faucets with contemporary or classic styles, you will find the widest selection of designs that will appeal to all.

Specification(s):

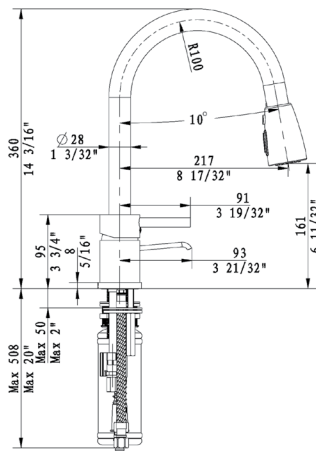
- Material: Solid Brass Construction
- Drilling: 1-3/8"
- Height: 14-3/16"
- Projection: 8-17/32"
- Other Features: Pull-down

PRODUCT	FINISH
A172140	Chrome
A172195	Brushed Nickel

Suggested Product(s):

A222140 – Chrome Soap Dispenser

A222195 – Stainless Steel Soap Dispenser



Kitchen Products

Riveo Faucets



Richelieu Section 9A

Riveo Kitchen Faucet One Jet Pull-Out Spray

The new range of Riveo faucets combines style, performance and reliability. Ergonomic faucets with contemporary or classic styles, you will find the widest selection of designs that will appeal to all.

- 35 mm ceramic disc cartridge
- For one or three-hole sinks
- CUPC certification
- Single lever faucet

Specification(s):

- Material: Solid Brass Construction
- Drilling: 1-3/8"
- Height: 17-5/16"

Included Product(s):

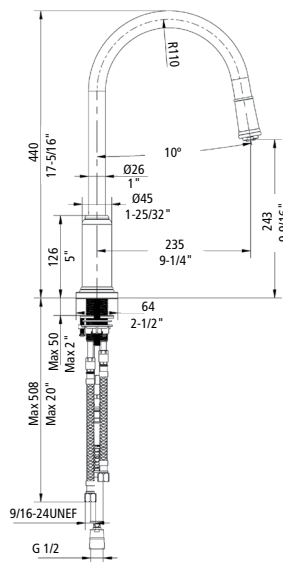
Cover plate included

PRODUCT	FINISH
A175140	Chrome
A175195	Brushed Nickel

Suggested Product(s):

A222140 – Chrome Soap Dispenser
A222195 – Stainless Steel Soap Dispenser

- Projection: 9-1/4"
- Other Features: Pull-out



Riveo Kitchen Faucet Two Jet Pull-Out Spray

The new range of RIVEO kitchen faucets combines style, performance, and reliability.

- 35 mm ceramic disc cartridge
- For one- or three-hole sinks
- CUPC certification
- Single lever

Specification(s):

- Material: Solid Brass Construction
- Drilling: 1-3/8"
- Height: 20-3/4"

Included Product(s):

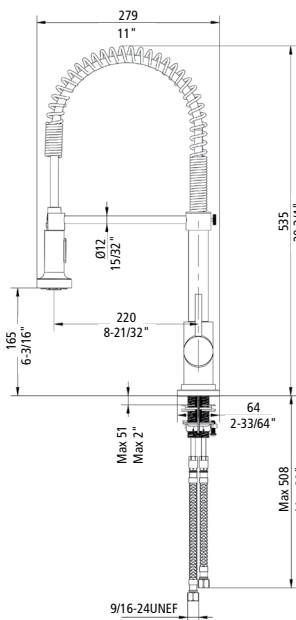
Cover plate included

PRODUCT	FINISH
A184140	Chrome
A184195	Brushed Nickel

Suggested Product(s):

A222140 – Chrome Soap Dispenser
A222195 – Stainless Steel Soap Dispenser

- Projection: 8-21/32"
- Other Features: Pull-out



- 1 SCREWS AND FASTENERS
- 2 FURNITURE EQUIPMENT
- 3 HINGES
- 4 SLIDES
- 5 CASTERS AND LEGS
- 6 KITCHEN SOLUTIONS
- 7 CLOSET SOLUTIONS
- 8 LIGHTING SOLUTIONS
- 9 SINKS AND FAUCETS
- 10 OFFICE
- 11 SLIDING DOORS
- 12 GLASS HARDWARE
- 13 PANELS AND SURFACES
- 14 EDGE-BANDING
- 15 CABINET DOORS AND DRAWERS
- 16 CORBELS AND FLOOR REGISTERS
- 17 GLUES, SILICONES, CAULK AND INSULATING
- 18 TOOLS AND SECURITY
- 19 FINISHING PRODUCTS AND SHOP SUPPLIES
- 20 COMMERCIAL DISPLAY HARDWARE
- 21 MOLDING, RAILING AND BATHROOM HARDWARE

Kitchen Products

Riveo Faucets



Richelieu Section 9A

Riveo Kitchen Faucet Two Jet Pull-Out Spray

The new range of Riveo faucets combines style, performance, and reliability. Ergonomic faucets with contemporary or classic styles, you will find the widest selection of designs that will appeal to all.

- 35 mm ceramic disc cartridge
- For one or three-hole sinks
- CUPC certification
- Single lever faucet

Specification(s):

- Material: Solid Brass Construction
- Drilling: 1-3/8"
- Height: 22-3/8"

Included Product(s):

Cover plate included

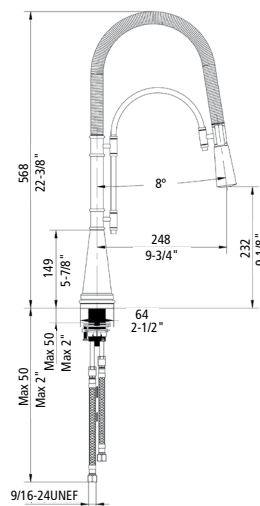
PRODUCT	FINISH
A178140	Chrome
A178195	Brushed Nickel

Suggested Product(s):

A222140 – Chrome Soap Dispenser

A222195 – Stainless Steel Soap Dispenser

- Projection: 9-3/4"
- Other Features: Pull-out



Riveo Kitchen Faucet Two Jet Pull-Out Spray

The new line of Riveo faucets combines style, performance and reliability. Ergonomic faucets with contemporary or classic styles, you will find the widest selection of designs that will appeal to all. 35 mm ceramic disc cartridge.

- For one or three-hole sinks
- CUPC certification
- Single lever faucet

Specification(s):

- Material: Solid Brass Construction
- Drilling: 1-3/8"
- Height: 32-51/64"

Included Product(s):

Cover plate included.

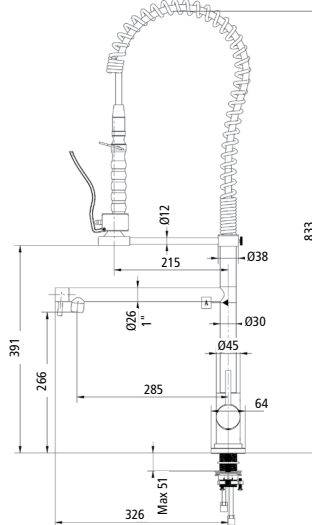
PRODUCT	FINISH
A177140	Chrome
A177195	Brushed Nickel

Suggested Product(s):

A222140 – Chrome Soap Dispenser

A222195 – Stainless Steel Soap Dispenser

- Projection: 8-15/32"
- Other Features: Pull-out



Kitchen Products

Riveo Faucets



Richelieu Section 9A

Riveo Kitchen Faucet Two Jet Pull-Out Spray

The new range of Riveo faucets combines style, performance and reliability. Ergonomic faucets with contemporary or classic styles, you will find the widest selection of designs that will appeal to all.

- 35 mm ceramic disc cartridge
- For one- or three-hole sinks
- CUPC certification
- Single lever faucet

Specification(s):

- Material: Solid Brass Construction
- Drilling: 1-3/8"
- Height: 17-29/32"

Included Product(s):

Cover plate included.

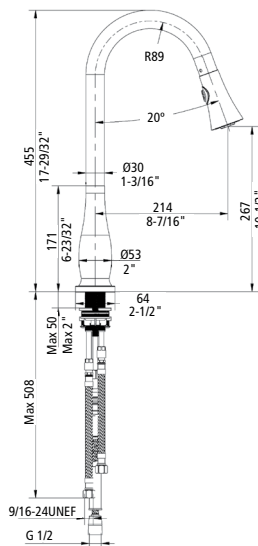
PRODUCT	FINISH
A173140	Chrome
A173195	Brushed Nickel

Suggested Product(s):

A222140 – Chrome Soap Dispenser

A222195 – Stainless Steel Soap Dispenser

- Projection: 8-7/16"
- Other Features: Pull-out



Riveo Kitchen Faucet Two Jet Pull-Out Spray

- 40 mm ceramic disc cartridge
- For one or three-hole sinks
- CUPC certification
- Single lever faucet

Specification(s):

- Material: Solid Brass Construction
- Drilling: 1-3/8"
- Height: 16"

Included Product(s):

Cover plate included.

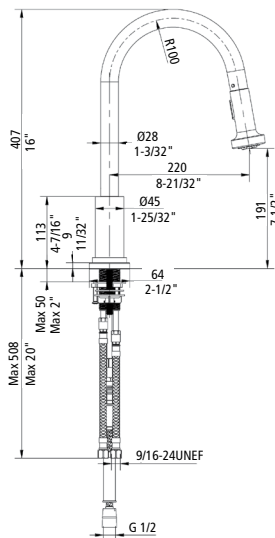
PRODUCT	FINISH
A174140	Chrome
A174195	Brushed Nickel

Suggested Product(s):

A222140 – Chrome Soap Dispenser

A222195 – Stainless Steel Soap Dispenser

- Projection: 8-21/32"
- Other Features: Pull-down



- 1 SCREWS AND FASTENERS
- 2 FURNITURE EQUIPMENT
- 3 HINGES
- 4 SLIDES
- 5 CASTERS AND LEGS
- 6 KITCHEN SOLUTIONS
- 7 CLOSET SOLUTIONS
- 8 LIGHTING SOLUTIONS
- 9 SINKS AND FAUCETS
- 10 OFFICE
- 11 SLIDING DOORS
- 12 GLASS HARDWARE
- 13 PANELS AND SURFACES
- 14 EDGE-BANDING
- 15 CABINET DOORS AND DRAWERS
- 16 CORBELS AND FLOOR REGISTERS
- 17 GLUES, SILICONES, CAULK AND INSULATING
- 18 TOOLS AND SECURITY
- 19 FINISHING PRODUCTS AND SHOP SUPPLIES
- 20 COMMERCIAL DISPLAY HARDWARE
- 21 MOLDING, RAILING AND BATHROOM HARDWARE

Kitchen Products

Riveo Faucets



Richelieu Section 9A

Riveo Kitchen Faucet Two Jet Pull-Out Spray

The new range of Riveo faucets combines style, performance and reliability. Ergonomic faucets with contemporary or classic styles, you will find the widest selection of designs that will appeal to all.

- 40 mm ceramic disc cartridge
- For one or three hole sinks
- CUPC certification
- Single lever faucet

Specification(s):

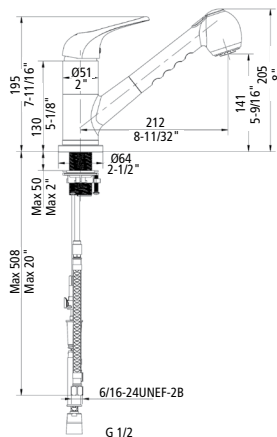
- Material: Solid Brass Construction
- Drilling: 1-3/8"
- Height: 8"

- Projection: 8-11/32"
- Other Features: Pull-out

Included Product(s):

Cover plate included

PRODUCT	FINISH
A170140	Chrome
A170195	Brushed Nickel



Riveo Kitchen Faucet Two Jet Pull-Out Spray

- 40 mm ceramic disc cartridge
- For one or three-hole sinks
- CUPC certification
- Single lever faucet

Specification(s):

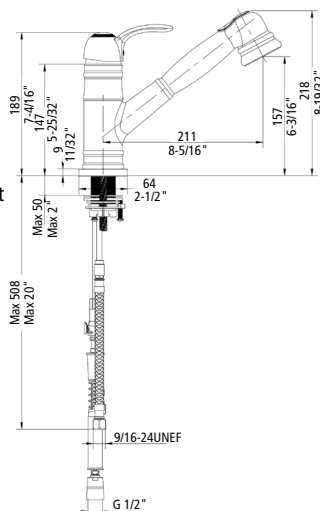
- Material: Solid Brass Construction
- Drilling: 1-3/8"
- Height: 8-19/32"

- Projection: 8-5/16"
- Other Features: Pull-out

Included Product(s):

Cover plate included.

PRODUCT	FINISH
A185140	Chrome
A185195	Brushed Nickel



Kitchen Products

Riveo Faucets



Riveo Kitchen Faucet Deck Mounted

Surface mounted faucet, 8" center with 90° ceramic cartridge. CUPC certification. Two holes of 1-3/8" (35 mm).

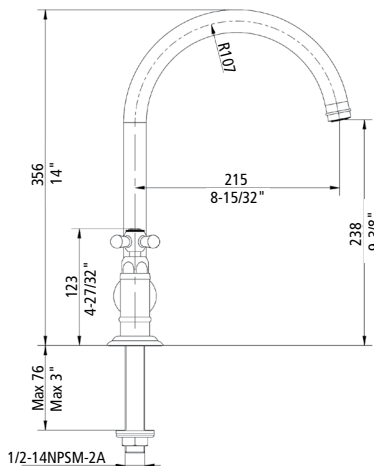
Specification(s):

- Material: Solid Brass Construction
- Drilling: 1-3/8"
- Height: 14"
- Projection: 8-15/32"

PRODUCT	FINISH
A221140	Chrome
A221195	Brushed Nickel

Suggested Product(s):

A222140 – Chrome Soap Dispenser, A222195 – Stainless Steel Soap Dispenser



Blanco Faucets

BLANCO

Blanco Kitchen Faucet – Culina

Sophisticated, yet elegant design. Our new BLANCO CULINA semi-professional design combines high performance with high style. Notice the sleek closed coil, the streamlined handle inlay, and the magnetic spray holder-- just a few of the details sure to add surprise and delight! A gracefully flexible steel spring spout provides maximum free range. The streamlined closed coil is also easier to keep clean. 2011 RED DOT award-winning design.

- AB1953 Compliant under NSF Annex G certification
- 2.2 GPM flow rate
- Dual spray feature on hand spray
- Reach 8-5/8"
- Ceramic disc cartridge
- Limited lifetime warranty
- Application: Quick-release magnetic hand spray is easy to use and effortlessly snaps back to its original position just by

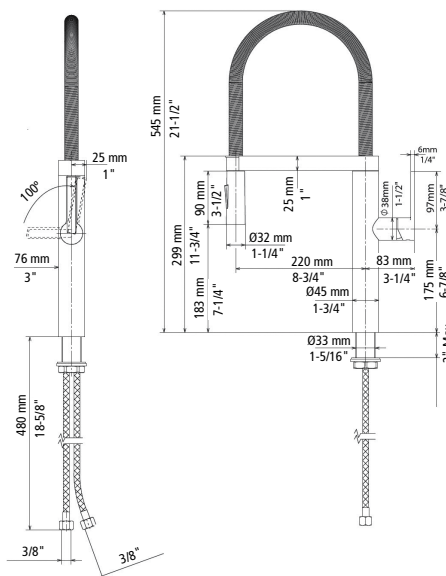
holding the spout near the magnetic feature. Easy-to-clean rubber nubbins on the spray head make it easy to clean calcium and lime deposits with your finger

- Code/standards compliance:
 - ASME A112.18.1-2005
 - NSF 61 certified in conformance with Uniform Plumbing Code
 - NSF 61 ANEX G low lead requirements

Specification(s):

- Material: Solid Brass Construction
- Drilling: 1-3/8"
- Height: 22"
- Projection: 8-3/4"

PRODUCT	FINISH
4827140	Chrome
4827170	Stainless Steel



Richelieu Section 9A



CCRMUS 2017

Page 9A25

- 1 SCREWS AND FASTENERS
- 2 FURNITURE EQUIPMENT
- 3 HINGES
- 4 SLIDES
- 5 CASTERS AND LEGS
- 6 KITCHEN SOLUTIONS
- 7 CLOSET SOLUTIONS
- 8 LIGHTING SOLUTIONS
- 9 SINKS AND FAUCETS
- 10 OFFICE
- 11 SLIDING DOORS
- 12 GLASS HARDWARE
- 13 PANELS AND SURFACES
- 14 EDGE-BANDING
- 15 CABINET DOORS AND DRAWERS
- 16 CORBELS AND FLOOR REGISTERS
- 17 GLUES, SILICONES, CAULK AND INSULATING
- 18 TOOLS AND SECURITY
- 19 FINISHING PRODUCTS AND SHOP SUPPLIES
- 20 COMMERCIAL DISPLAY HARDWARE
- 21 MOLDING, RAILING AND BATHROOM HARDWARE

Kitchen Products

Blanco Faucets

BLANCO

Blanco Kitchen Faucet – Meridian

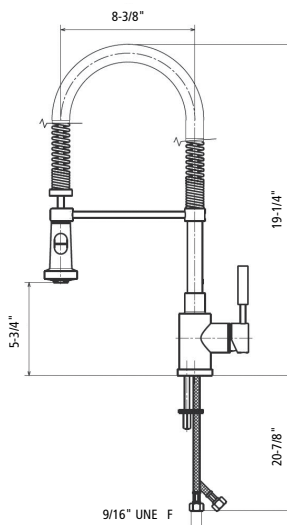
Experience the beauty and performance of our Master Gourmet on a smaller scale. Designed with solid brass construction. Semi-professional with a pull-down spray in polished chrome.

- 2.2 GPM flow rate
- AB1953 lead-free compliant
- Lever handle
- Solid brass body and pull-down hand spray
- Ceramic disk cartridge
- Extra-long supply lines
- Limited lifetime warranty
- Code/standards compliance:
 - ASME A112.18.1-2005
 - IAPMO listed

Specification(s):

- Material: Solid Brass Construction
- Drilling: 1-3/8"
- Height: 19-1/4"
- Projection: 8-3/8"
- Other Features: Pull-down hand spray

PRODUCT	FINISH
4821170	Stainless Steel
4821140	Chrome



Richelieu Section 9A



Blanco Kitchen Faucet – Rados

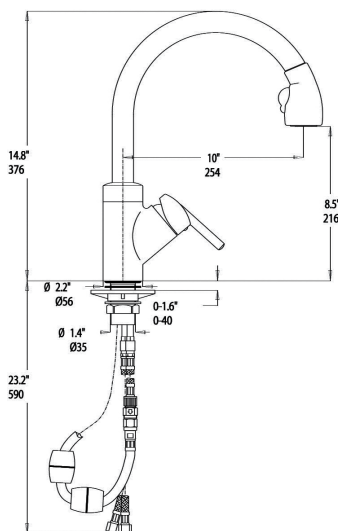
Beauty meets functionality in this contemporary faucet. Choose from a variety of finishes for the faucet and the spray, each designed with a solid brass body and flexible pull-down spray hose.

- AB1953 lead-free compliant
- 2.2 GPM flow rate
- Solid brass body and two jet pull-down spray
- Ceramic disk cartridge
- Extra-long supply lines
- Limited lifetime warranty
- Code/standards compliance:
 - ASME A112.18.1M-2003
 - IAPMO listed

Specification(s):

- Material: Solid Brass Construction
- 2 Choices of Jet (Normal and Spray)
- Drilling: 1-3/8"
- Height: 15"
- Projection: 10"
- Other Features: High-arc spout and pull-down handspray

PRODUCT	FINISH
4822140	Chrome
4822170	Stainless Steel



Kitchen Products

Blanco Faucets

BLANCO

Blanco Kitchen Faucet – Linus

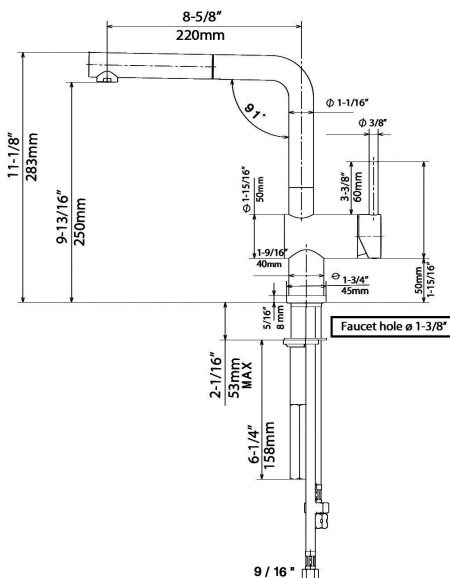
Functionality for the professional kitchen. Designed with a high arc spout that swivels 360 degrees to easily fill pots, pans, and vases. Classic contemporary design to make any kitchen look professional. A consumer value combining durable construction and excellent functionality

- AB1953 compliant
- 2.2 GPM flow rate
- Ceramic disk cartridge
- Color coded hot and cold supply lines
- Durable spiral flexible pull-out spray hose
- Pullout single function spray
- Single-function stream only pull-out
- Limited lifetime warranty
- Code/standards compliance:
 - ASME A112.18.1-2005
 - NSF 61 certified
 - NSF 61 ANEX G low-lead requirements

Specification(s):

- Material: Solid Brass Construction
- Drilling: 1-3/8"
- Height: 11"
- Projection: 8-5/8"
- Other Features: Pullout single function spray

PRODUCT	FINISH
4828140	Chrome
4828170	Stainless Steel



Blanco Kitchen Faucet – Grace Pot Filler

This traditional-style pot filler features a unique swivel aerator providing maximum flexibility in the kitchen. For those with an affinity for professional-grade accessories, we invite you to discover our BLANCO GRACE wall-mounted pot filler.

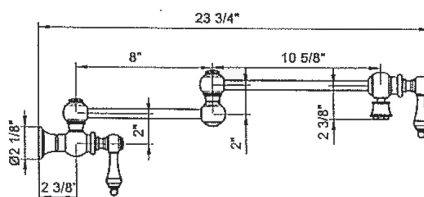
- AB1953 lead-free compliant
- Overall length 23-3/4"
- 2.2 GPM flow rate
- Wall-mounted faucet
- Solid brass body and dual quarter-turn shut-off valves

- Unique swivel aerator for easy use
- Ceramic disk cartridges
- Limited lifetime warranty
- Cold water only, non-mixing valve

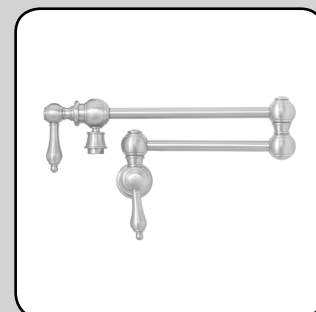
Specification(s):

- Material: Solid Brass Construction
- Projection: 18-5/8"

PRODUCT
4826170



Richelieu Section 9A



- 1 SCREWS AND FASTENERS
- 2 FURNITURE EQUIPMENT
- 3 HINGES
- 4 SLIDES
- 5 CASTERS AND LEGS
- 6 KITCHEN SOLUTIONS
- 7 CLOSET SOLUTIONS
- 8 LIGHTING SOLUTIONS
- 9 SINKS AND FAUCETS
- 10 OFFICE
- 11 SLIDING DOORS
- 12 GLASS HARDWARE
- 13 PANELS AND SURFACES
- 14 EDGE-BANDING
- 15 CABINET DOORS AND DRAWERS
- 16 CORBELS AND FLOOR REGISTERS
- 17 GLUES, SILICONES, CAULK AND INSULATING
- 18 TOOLS AND SECURITY
- 19 FINISHING PRODUCTS AND SHOP SUPPLIES
- 20 COMMERCIAL DISPLAY HARDWARE
- 21 MOLDING, RAILING AND BATHROOM HARDWARE

Kitchen Products

Blanco Faucets

BLANCO

Blanco Kitchen Faucet – Grace

This Victorian-inspired design may look delicate, but shows its strength when it comes to performance. With solid brass construction and color-coded hot and cold supply lines, this faucet will surely exceed your expectations.

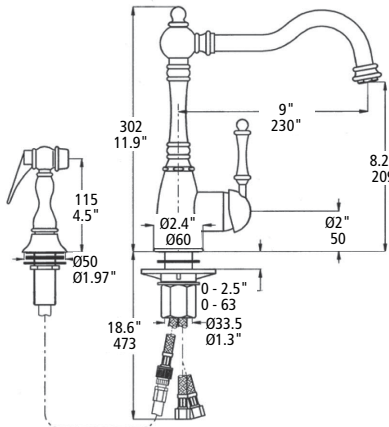
- 2.2 GPM flow rate
- AB1953 lead-free compliant
- Reversible mounting hardware adapts to thick or thin mounting surfaces
- Lever handle
- Side spray 1-3/8" hole
- Solid brass body and all-metal side spray
- Ceramic disk cartridge
- Extra-long supply lines
- Limited lifetime warranty
- Installation in a 1-3/8" hole, side spray in 1-3/8" hole
- Code/standards compliance:
 - ASME A112.18.1-2005
 - IAPMO listed

Specification(s):

- Material: Solid Brass Construction
- Drilling: 1-3/8"
- Height: 12"
- Projection: 9"

PRODUCT

4823170



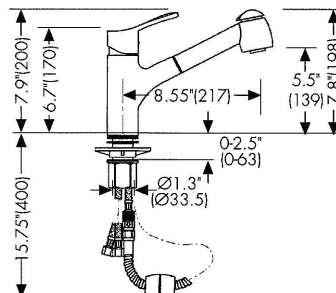
Blanco Kitchen Faucet – Aires II

Fresh new design twist to our classic BLANCO AIRES II. Featuring a decorative loop handle, solid brass body, convenient pull-out spray and color-coded hot and cold supply lines, our BLANCO AIRES II faucet is anything but ordinary. A new, freshly designed hand spray combines form with great function.

- AB1953 lead-free compliant
- 1.8 GPM flow rate
- Water-saving faucet
- Loop handle
- Solid brass body and two jet pull-out spray
- Ceramic disk cartridge
- Extra-long supply lines
- Limited lifetime warranty

Specification(s):

- Material: Solid Brass Construction
- Drilling: 1-3/8"
- Height: 8"
- Projection: 8-1/2"



PRODUCT

4824170

FINISH

Stainless Steel

4824140

Chrome

Richelieu Section 9A



Kitchen Products

Accessories

BLANCO

47" Sink Setter for Offset Undermount Sinks

Model PW-114 adjusts from 31" to 47" in length. This model is recommended for deeper cabinets with offset sinks and for side-to-side installations. Made of metal.

Application: For use with large or double-bowl stainless steel sinks or with cast iron, china, lavatory, and all other sinks in non-standard cabinet applications.

Included Product(s):

Package includes two heavy-duty Sink Setter bars, adjustable to 47", as well as all leveling bolts, screws, and required hardware.

PRODUCT

PW114

47" Sink Setter for Undermount Sinks

Model PW-104 adjusts from 25" to 47" in length. This size works well in deeper cabinets, islands, and for side-to-side installations. Made of metal.

Application: For use with large or double-bowl stainless steel sinks or with cast iron, china, lavatory, and all other sinks in non-standard cabinet applications.

Included Product(s):

Package includes two heavy-duty Sink Setter bars, adjustable to 47", as well as all leveling bolts, screws, and required hardware.

PRODUCT

PW104

26" Sink Setter for Undermount Sinks

Model PW-99 is adjustable from 14" to 26" long, and is typically used in front-to-back installations in standard cabinets or in side-to-side installations in narrow cabinets. Made of metal.

Application: Can be used with any cast iron, small single-bowl stainless steel, china, or lavatory sink, and with most standard installations.

Included Product(s):

Package includes two standard Sink Setter bars, adjustable to 26", as well as all leveling bolts, screws, and hardware required for sink installation.

PRODUCT

PW99

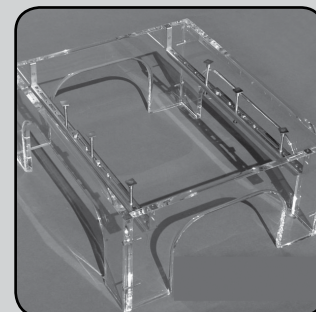
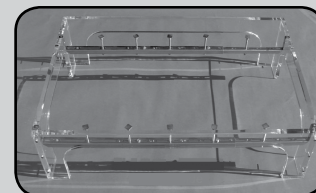
Replacement Cartridge – Water Filters

Replacement cartridge for filter system.

PRODUCT

AFILTER

Richelieu Section 9A



- 1 SCREWS AND FASTENERS
- 2 FURNITURE EQUIPMENT
- 3 HINGES
- 4 SLIDES
- 5 CASTERS AND LEGS
- 6 KITCHEN SOLUTIONS
- 7 CLOSET SOLUTIONS
- 8 LIGHTING SOLUTIONS
- 9 SINKS AND FAUCETS
- 10 OFFICE
- 11 SLIDING DOORS
- 12 GLASS HARDWARE
- 13 PANELS AND SURFACES
- 14 EDGE-BANDING
- 15 CABINET DOORS AND DRAWERS
- 16 CORBELS AND FLOOR REGISTERS
- 17 GLUES, SILICONES, CAULK AND INSULATING
- 18 TOOLS AND SECURITY
- 19 FINISHING PRODUCTS AND SHOP SUPPLIES
- 20 COMMERCIAL DISPLAY HARDWARE
- 21 MOLDING, RAILING AND BATHROOM HARDWARE

CCRMUS 2017

Kitchen Products

Accessories

Soap Dispenser

Specification(s):

- Width: 2-1/8"
- Height: 6-3/32"
- Drilling: 3-3/4"
- Material: Plastic

PRODUCT	FINISH
A222140	Chrome
A222195	Stainless Steel

Blanco Cleaner – 450ml

PRODUCT	DESCRIPTION
4852170	For stainless steel sinks

Richelieu Section 9A



Bathroom Products

Riveo Porcelain Washbasin – Surface Mounting

Create a leisurely, elegant environment with these washbasins, featuring a simple design for modern times. These single sinks are made of vitreous china with a smooth, durable, and wear-resistant coating. Comes with a warranty. Rear overflow with a chrome ring. Meets or exceeds the following standards: CSA B45. 1-2008/ASME A112.19.2 and IAPMO CUPC.

Included Product(s):

- Template supplied
- Pop-Up included with the purchase of a Riveo bathroom faucet



Richelieu Section 9B

Riveo Vessel

Specification(s):

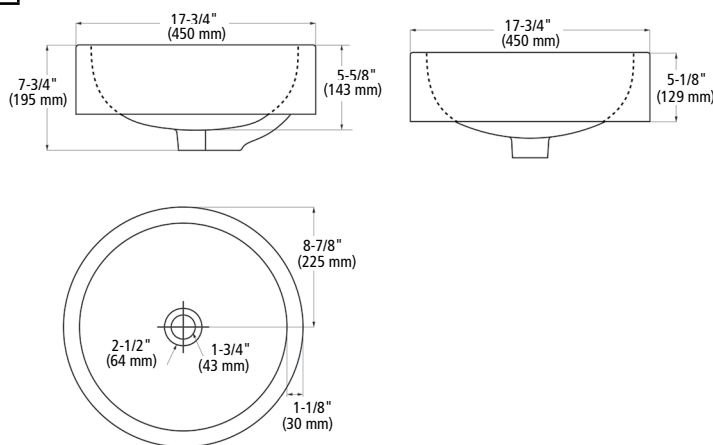
- Installation Type: Surface Mounting
- Sink Type: Round
- Depth (Front to Back): 17-3/4"
- Width: 17-3/4"
- Material: Porcelain
- Finish: White
- Visible Height: 5-1/8"
- Total Height: 7-3/4"

PRODUCT

ALD868

Suggested Product(s):

A187140 – Riveo Bathroom Faucet,
A217140 – Riveo Bathroom Faucet,
A195140 – Riveo Bathroom Faucet,
A193140 – Riveo Bathroom Faucet,
A189140 – Riveo Bathroom Faucet



Riveo Vessel

Specification(s):

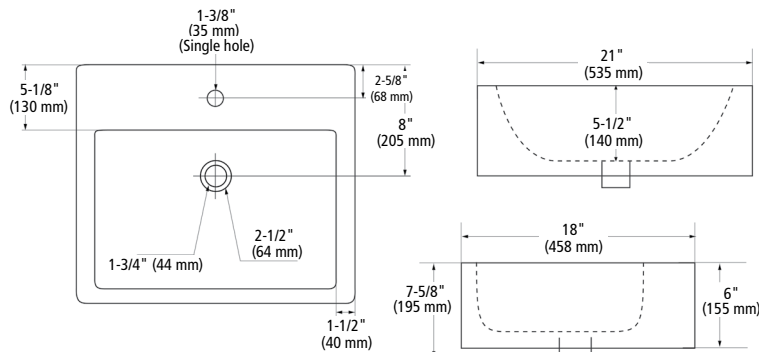
- Installation Type: Surface Mounting
- Sink Type: Single
- Finish: White
- Single hole
- Depth (Front to Back): 18"
- Width: 21"
- Visible Height: 5-1/2"
- Total Height: 7-5/8"

PRODUCT

ALD865

Suggested Product(s):

A194140 – Riveo Bathroom Faucet,
A192140 – Riveo Bathroom Faucet,
A188140 – Riveo Bathroom Faucet



Bathroom Products

Riveo Porcelain Washbasin – Surface Mounting



Richelieu Section 9B

Riveo Vessel

Specification(s):

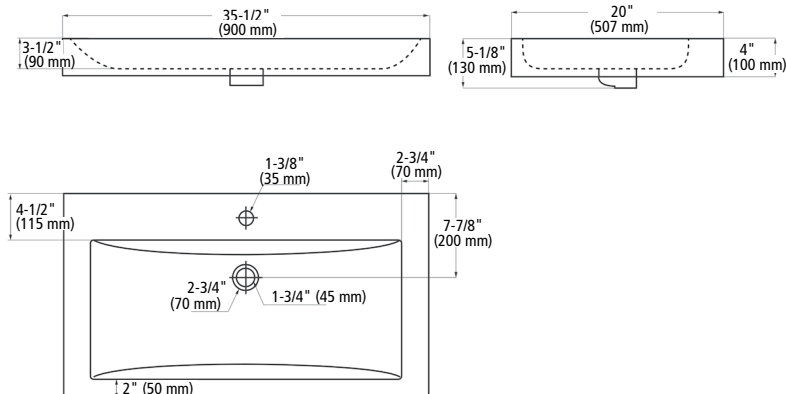
- Installation Type: Surface Mounting
- Sink Type: Single
- Finish: White
- Depth (Front to Back): 20"
- Width: 35-1/2"
- Visible Height: 4"
- Total Height: 5-1/8"

PRODUCT

ALD873

Suggested Product(s):

A216140 – Riveo Bathroom Faucet,
A194140 – Riveo Bathroom Faucet,
A192140 – Riveo Bathroom Faucet,
A188140 – Riveo bathroom faucet



Riveo Vessel

Specification(s):

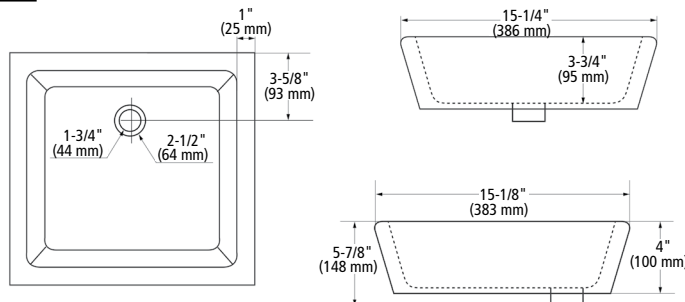
- Installation Type: Surface Mounting
- Sink Type: Single
- Finish: White
- Depth (Front to Back): 15-1/8"
- Width: 15-1/4"
- Visible Height: 4"
- Total Height: 5-7/8"
- Rear overflow not included

PRODUCT

ALD875

Suggested Product(s):

A187140 – Riveo Bathroom Faucet,
A217140 – Riveo Bathroom Faucet,
A195140 – Riveo Bathroom Faucet,
A193140 – Riveo Bathroom Faucet,
A189140 – Riveo Bathroom Faucet



Bathroom Products

Riveo Porcelain Washbasin – Drop-in



Richelieu Section 9B

Riveo Vessel

Specification(s):

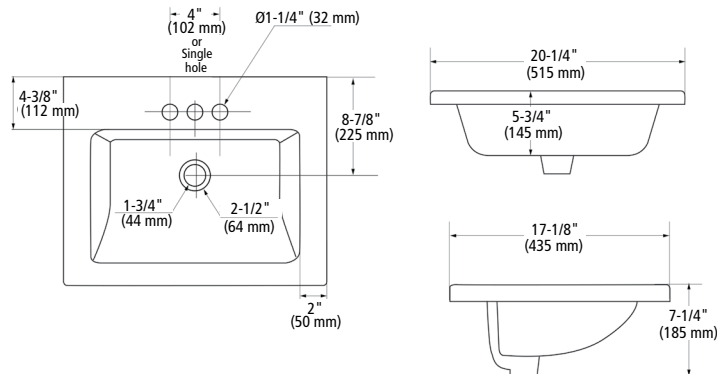
- Installation Type: Drop-in
- Sink Type: Single
- Depth (Front to Back): 17-1/8"

- Width: 20-1/4"
- Total Height: 7-1/4"
- Finish: White

PRODUCT	HOLES PRE-DRILLED IN BACK
ALD866	3
ALD877	1

Suggested Product(s):

A213140 – Riveo Bathroom Faucet
(Complementary to only ALD866),
A214140 – Riveo Bathroom Faucet,
A215140 – Riveo Bathroom Faucet



Riveo Vessel

Specification(s):

- Installation Type: Drop-in
- Sink Type: Oval
- Depth (Front to Back): 17-1/8"

- Width: 20-1/4"
- Total Height: 7-1/2"
- Finish: White

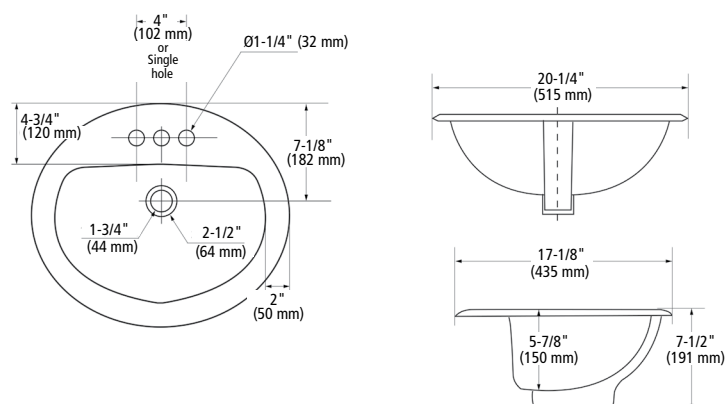
PRODUCT	HOLES PRE-DRILLED IN BACK
ALD876	1
ALD861	3

Suggested Product(s):

ALD876:
A194140 – Riveo Bathroom Faucet
A216140 – Riveo Bathroom Faucet
A192140 – Riveo Bathroom Faucet
A188140 – Riveo Bathroom Faucet
A186140 – Riveo Bathroom Faucet

ALD861:

A214140 – Riveo Bathroom Faucet
A215140 – Riveo Bathroom Faucet
A213140 – Riveo Bathroom Faucet



- 1 SCREWS AND FASTENERS
- 2 FURNITURE EQUIPMENT
- 3 HINGES
- 4 SLIDES
- 5 CASTERS AND LEGS
- 6 KITCHEN SOLUTIONS
- 7 CLOSET SOLUTIONS
- 8 LIGHTING SOLUTIONS
- 9 SINKS AND FAUCETS
- 10 OFFICE
- 11 SLIDING DOORS
- 12 GLASS HARDWARE
- 13 PANELS AND SURFACES
- 14 EDGE-BANDING
- 15 CABINET DOORS AND DRAWERS
- 16 CORBELS AND FLOOR REGISTERS
- 17 GLUES, SILICONES, CAULK AND INSULATING
- 18 TOOLS AND SECURITY
- 19 FINISHING PRODUCTS AND SHOP SUPPLIES
- 20 COMMERCIAL DISPLAY HARDWARE
- 21 MOLDING, RAILING AND BATHROOM HARDWARE

Riveo Vessel

Specification(s):

- Installation Type: Drop-in
- Sink Type: Round
- Depth (Front to Back): 19"

- Width: 19"
- Total Height: 8"
- Finish: White

PRODUCT	HOLES PRE- DRILLED IN BACK
ALD864	1
ALD863	3

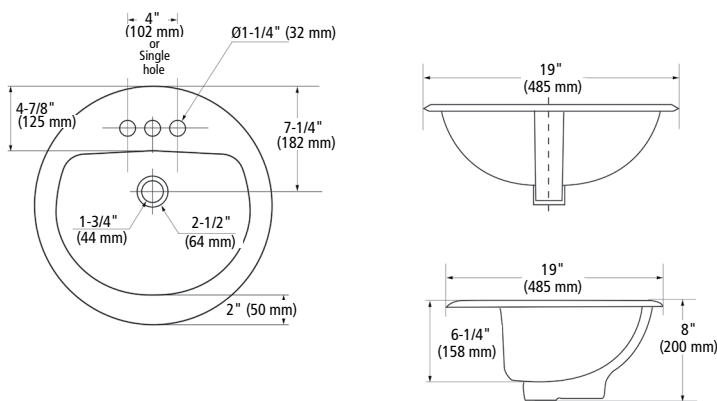
Suggested Product(s):

ALD864:

A194140 – Riveo Bathroom Faucet
A216140 – Riveo Bathroom Faucet
A192140 – Riveo Bathroom Faucet
A188140 – Riveo Bathroom Faucet
A186140 – Riveo Bathroom Faucet

ALD863:

A214140 – Riveo Bathroom Faucet
A215140 – Riveo Bathroom Faucet
A213140 – Riveo Bathroom Faucet



Riveo Washbasin – Undermount

Riveo Washbasin

Specification(s):

- Installation Type: Undermount
- Sink Type: Oval
- Depth (Front to Back): 14"

- Width: 17"
- Total Height: 7-1/2"
- Material: Porcelain

Included Product(s):

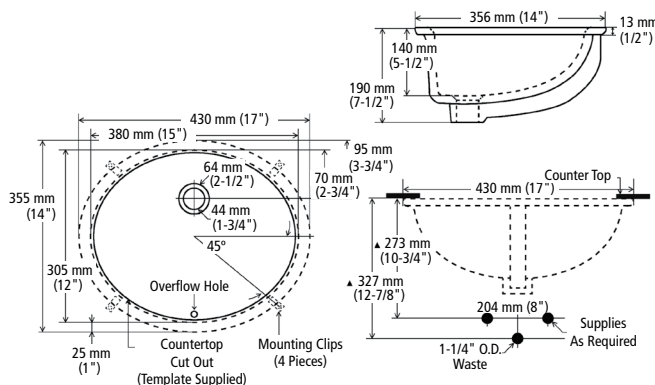
- Template supplied
- Pop-Up included with the purchase of a Riveo bathroom faucet

Sold by unit

PRODUCT	FINISH
ALD869	Bone
ALD870	White

Suggested Product(s):

A216140 – Riveo Bathroom Faucet,
A186140 – Riveo Bathroom Faucet,
A188140 – Riveo Bathroom Faucet,
A192140 – Riveo Bathroom Faucet,
A213140 – Riveo Bathroom Faucet,
A214140 – Riveo Bathroom Faucet,
A215140 – Riveo Bathroom Faucet



Bathroom Products

Riveo Washbasin – Undermount



Richelieu Section 9B

Riveo Washbasin

Specification(s):

- Installation Type: Undermount
- Sink Type: Single
- Depth (Front to Back): 15-1/2"

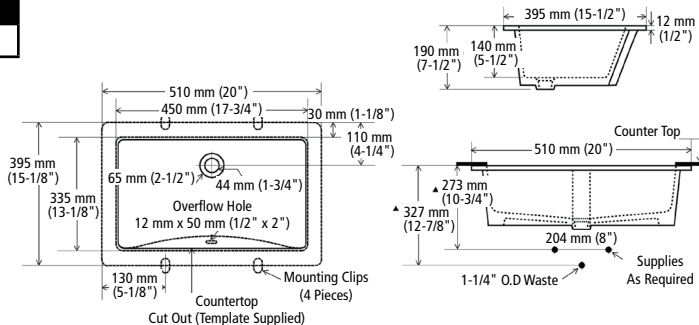
- Width: 20"
- Total Height: 7-1/2"
- Finish: White

PRODUCT

ALD872

Suggested Product(s):

A188140 – Pop-Up for Riveo Porcelain Vessel,
A186140 – Riveo Bathroom Faucet,
A192140 – Riveo Bathroom Faucet,
A213140 – Riveo Bathroom Faucet,
A214140 – Riveo Bathroom Faucet,
A215140 – Riveo Bathroom Faucet



Riveo Washbasin

Specification(s):

- Installation Type: Undermount
- Sink Type: Single
- Depth (Front to Back): 16"

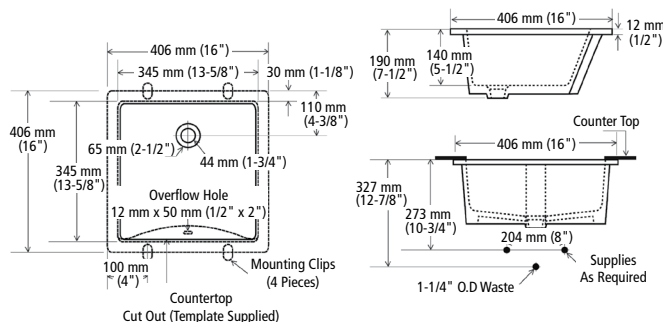
- Width: 16"
- Total Height: 7-1/2"
- Finish: White

PRODUCT

ALD871

Suggested Product(s):

A216140 – Riveo Bathroom Faucet,
A188140 – Riveo Bathroom Faucet,
A186140 – Riveo Bathroom Faucet,
A192140 – Riveo Bathroom Faucet,
A213140 – Riveo Bathroom Faucet,
A214140 – Riveo Bathroom Faucet,
A215140 – Riveo Bathroom Faucet



Bathroom Products

Riveo Bathroom Faucet



Richelieu Section 9B

Riveo Faucets have a ceramic disc cartridge, CUPC certification and a limited Lifetime Warranty.

Included Product(s):

- Pop-Up and cover plate included.

Riveo Bathroom Faucet

Specification(s):

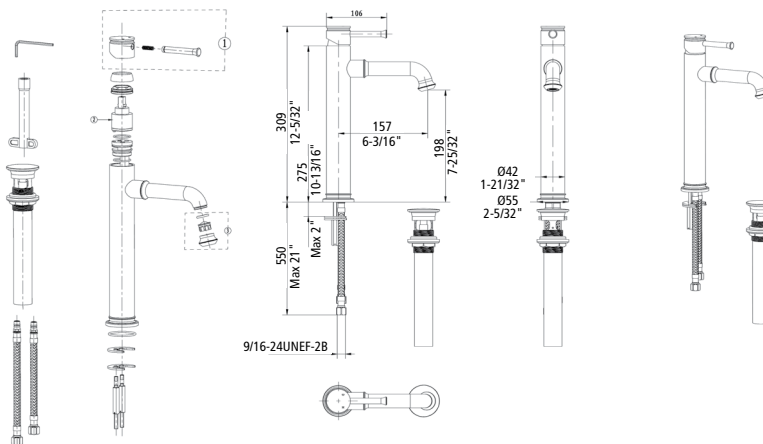
- Material: Solid Brass Construction
- Finish: Chrome
- Single lever faucet
- Height: 7-3/4"
- Projection: 4-15/16"
- Drilling: 1-3/8"
- Other Features: Deck mounted

PRODUCT

A192140

Suggested Product(s):

ALD869 – Riveo Washbasin,
ALD870 – Riveo Washbasin,
ALD871 – Riveo Washbasin,
ALD872 – Riveo Washbasin,
1518170 – Riveo Washbasin,
ALD864 – Riveo Vessel,
ALD865 – Riveo Vessel,
ALD873 – Riveo Washbasin,
ALD876 – Riveo Washbasin



Riveo Bathroom Faucet

Specification(s):

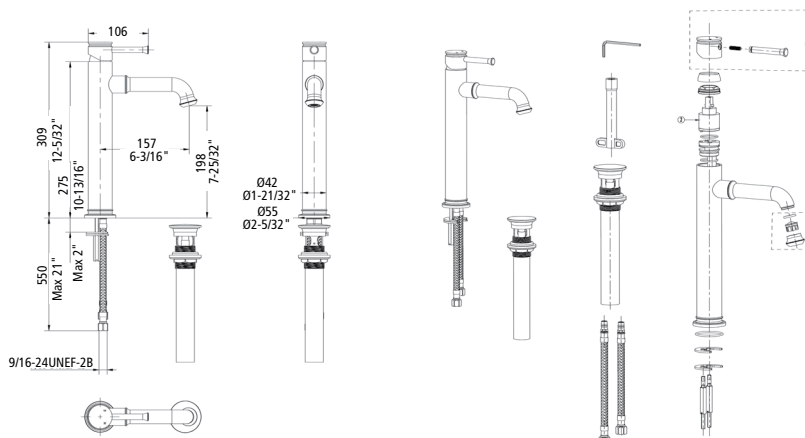
- Material: Solid Brass Construction
- Finish: Chrome
- Height: 12-5/32"
- Projection: 6-3/16"
- Drilling: 1-3/8"
- Other Features: Deck mounted

PRODUCT

A193140

Suggested Product(s):

ALD875 – Riveo Vessel,
ALD868 – Riveo Vessel



Bathroom Products

Riveo Bathroom Faucet



Richelieu Section 9B

Riveo Bathroom Faucet

Specification(s):

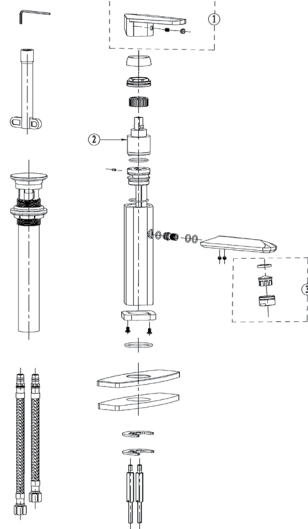
- Material: Solid Brass Construction
- Finish: Chrome
- Height: 8"
- Projection: 4-3/8"
- Drilling: 1-3/8"
- Other Features: Deck mounted

PRODUCT

A194140

Suggested Product(s):

ALD864 – Riveo Vessel,
ALD876 – Riveo Vessel,
ALD873 – Riveo Vessel,
ALD865 – Riveo Vessel,
1518170 – Riveo Washbasin



Riveo Bathroom Faucet

Specification(s):

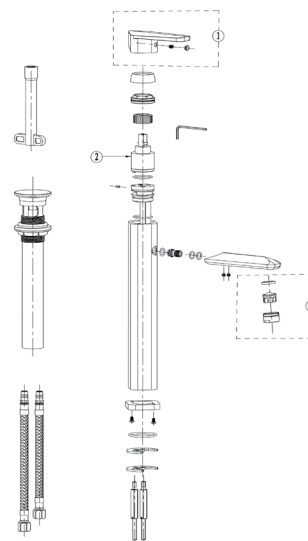
- Material: Solid Brass Construction
- Finish: Chrome
- Single lever faucet
- Height: 12-13/32"
- Projection: 4-3/8"
- Drilling: 1-3/8"
- Other Features: Deck mounted

PRODUCT

A195140

Suggested Product(s):

ALD875 – Riveo Vessel
ALD868 – Riveo Vessel



Riveo Bathroom Faucet

Specification(s):

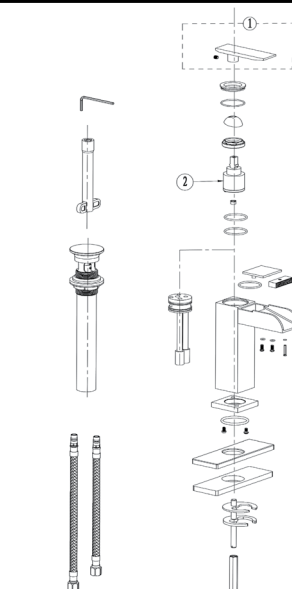
- Material: Solid Brass Construction
- Finish: Chrome
- For one or three hole sinks
- Height: 6-27/32"
- Projection: 4-3/16"
- Drilling: 1-3/8"
- Other Features: Deck mounted

PRODUCT

A216140

Suggested Product(s):

ALD871 – Riveo Washbasin,
ALD869 – Riveo Washbasin,
ALD870 – Riveo Washbasin,
ALD872 – Riveo Washbasin,
ALD876 – Riveo Vessel,
ALD864 – Riveo Vessel,
ALD873 – Riveo Vessel



1	SCREWS AND FASTENERS
2	FURNITURE EQUIPMENT
3	HINGES
4	SLIDES
5	CASTERS AND LEGS
6	KITCHEN SOLUTIONS
7	CLOSET SOLUTIONS
8	LIGHTING SOLUTIONS
9	SINKS AND FAUCETS
10	OFFICE
11	SLIDING DOORS
12	GLASS HARDWARE
13	PANELS AND SURFACES
14	EDGE-BANDING
15	CABINET DOORS AND DRAWERS
16	CORBELS AND FLOOR REGISTERS
17	GLUES, SILICONES, CAULK AND INSULATING
18	TOOLS AND SECURITY
19	FINISHING PRODUCTS AND SHOP SUPPLIES
20	COMMERCIAL DISPLAY HARDWARE
21	MOLDING, RAILING AND BATHROOM HARDWARE

CCRMUS 2017

Bathroom Products

Riveo Bathroom Faucet



Richelieu Section 9B

Riveo Bathroom Faucet

Specification(s):

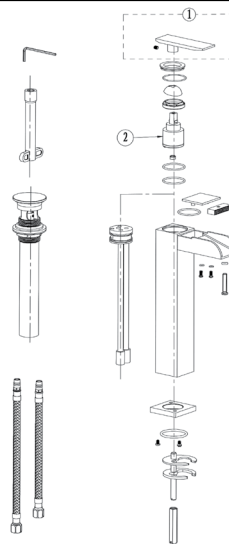
- Material: Solid Brass Construction
- Finish: Chrome
- For one or three-hole sinks
- Height: 11-15/32"
- Projection: 4-3/16"
- Drilling: 1-3/8"
- Other Features: Deck mounted

PRODUCT

A217140

Suggested Product(s):

ALD868 – Riveo Vessel,
ALD875 – Riveo Vessel



Riveo Bathroom Faucet

Specification(s):

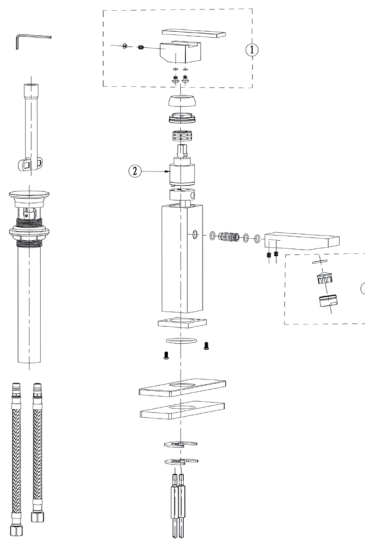
- Material: Solid Brass Construction
- Finish: Chrome
- Single lever faucet
- Height: 7-23/32"
- Projection: 4-13/32"
- Drilling: 1-3/8"
- Other Features: Deck mounted

PRODUCT

A186140

Suggested Product(s):

ALD871 – Riveo Washbasin,
ALD869 – Riveo Washbasin,
ALD870 – Riveo Washbasin,
ALD872 – Riveo Washbasin,
ALD876 – Riveo Vessel,
ALD864 – Riveo Vessel



Riveo Bathroom Faucet

Specification(s):

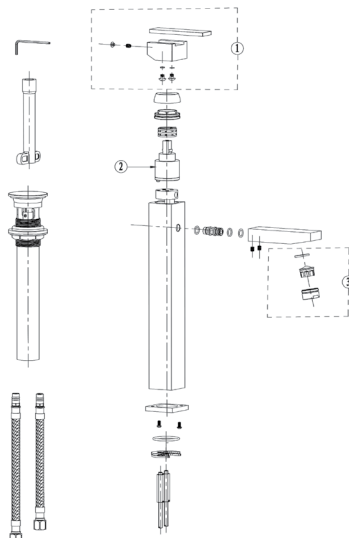
- Material: Solid Brass Construction
- Finish: Chrome
- Height: 13-5/16"
- Projection: 4-13/32"
- Drilling: 1-3/8"
- Other Features: Deck mounted

PRODUCT

A187140

Suggested Product(s):

ALD868 – Riveo Vessel,
ALD875 – Riveo Vessel



Bathroom Products

Riveo Bathroom Faucet



Richelieu Section 9B

Riveo Bathroom Faucet

Specification(s):

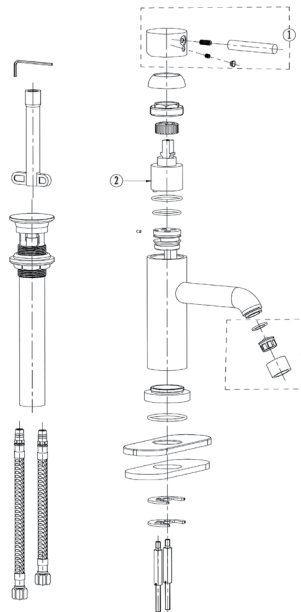
- Material: Solid Brass Construction
- Finish: Chrome
- Single lever faucet
- Height: 7-9/32"
- Projection: 5-7/16"
- Drilling: 1-3/8"
- Other Features: Deck mounted

PRODUCT

A188140

Suggested Product(s):

1518170 – Riveo Washbasin,
ALD873 – Riveo Vessel,
ALD865 – Riveo Vessel,
ALD864 – Riveo Vessel,
ALD876 – Riveo Vessel,
ALD869 – Riveo Washbasin,
ALD870 – Riveo Washbasin,
ALD871 – Riveo Washbasin,
ALD872 – Riveo Washbasin



Riveo Bathroom Faucet

Specification(s):

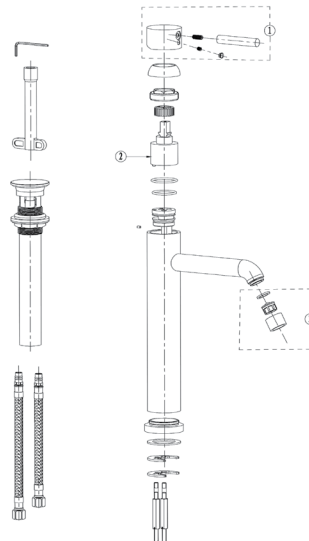
- Material: Solid Brass Construction
- Finish: Chrome
- Single lever faucet
- Height: 12-1/4"
- Projection: 7-7/16"
- Drilling: 1-3/8"
- Other Features: Deck mounted

PRODUCT

A189140

Suggested Product(s):

ALD875 – Riveo Vessel,
ALD868 – Riveo Vessel



1	SCREWS AND FASTENERS
2	FURNITURE EQUIPMENT
3	HINGES
4	SLIDES
5	CASTERS AND LEGS
6	KITCHEN SOLUTIONS
7	CLOSET SOLUTIONS
8	LIGHTING SOLUTIONS
9	SINKS AND FAUCETS
10	OFFICE
11	SLIDING DOORS
12	GLASS HARDWARE
13	PANELS AND SURFACES
14	EDGE-BANDING
15	CABINET DOORS AND DRAWERS
16	CORBELS AND FLOOR REGISTERS
17	GLUES, SILICONES, CAULK AND INSULATING
18	TOOLS AND SECURITY
19	FINISHING PRODUCTS AND SHOP SUPPLIES
20	COMMERCIAL DISPLAY HARDWARE
21	MOLDING, RAILING AND BATHROOM HARDWARE

Bathroom Products

Riveo Bathroom Faucet



Richelieu Section 9B

Riveo Bathroom Faucet

Specification(s):

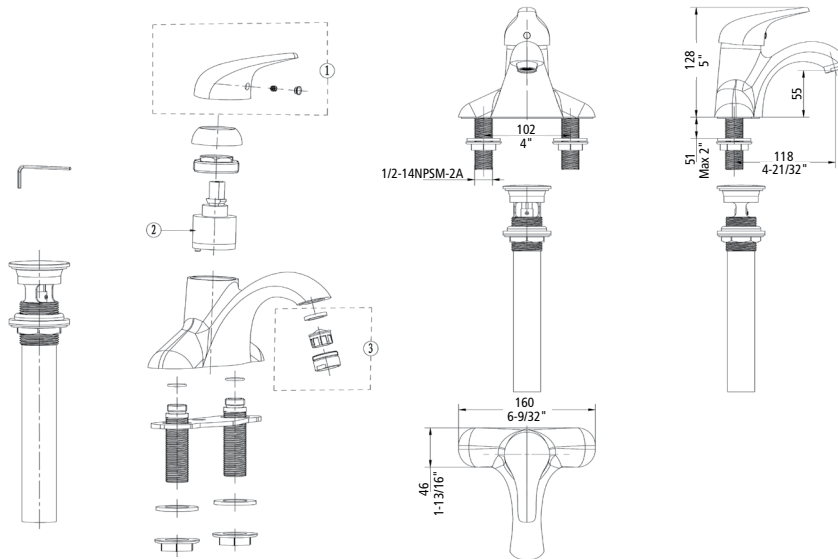
- Material: Solid Brass Construction
- Finish: Chrome
- Single handle lever
- Two holes 1-1/4" (32 mm) to 4" (101 mm) center
- Height: 5"
- Projection: 4-21/32"
- Drilling: 1-1/4"
- Other Features: Deck mounted

PRODUCT

A213140

Suggested Product(s):

ALD869 – Riveo Washbasin,
ALD870 – Riveo Washbasin,
ALD871 – Riveo Washbasin,
ALD872 – Riveo Washbasin,
1518170 – Riveo Washbasin
ALD866 – Riveo Vessel,
ALD863 – Riveo Vessel,
ALD861 – Riveo Vessel



Riveo Bathroom Faucet

Specification(s):

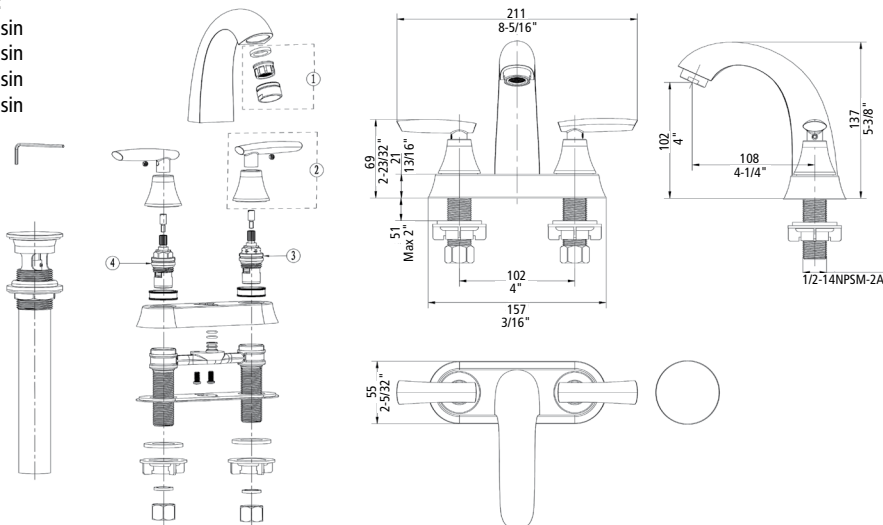
- Material: Solid Brass Construction
- Finish: Chrome
- Height: 5-3/8"
- Projection: 4-1/4"
- Drilling: 1-1/4"
- Two holes of 1-1/4" (32 mm) at 4" (101 mm) center
- Other Features: Deck mounted

PRODUCT

A214140

Suggested Product(s):

ALD869 – Riveo Washbasin
ALD870 – Riveo Washbasin
ALD871 – Riveo Washbasin
ALD872 – Riveo Washbasin
ALD866 – Riveo Vessel
ALD863 – Riveo Vessel
ALD861 – Riveo Vessel



Bathroom Products

Riveo Bathroom Faucet



Richelieu Section 9B

Riveo Bathroom Faucet

Specification(s):

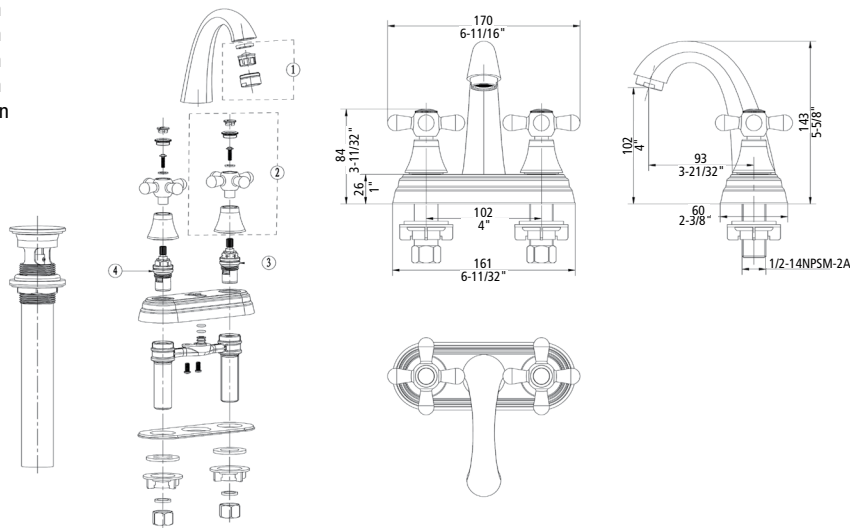
- Material: Solid Brass Construction
- Finish: Chrome
- Two holes of 1-1/4" (32 mm) at 4" (101 mm) center
- Height: 5-5/8"
- Projection: 3-21/32"
- Drilling: 1-1/4"
- Other Features: Deck mounted

PRODUCT

A215140

Suggested Product(s):

ALD869 – Riveo Washbasin
ALD870 – Riveo Washbasin
ALD871 – Riveo Washbasin
ALD872 – Riveo Washbasin
1518170 – Riveo Washbasin
ALD866 – Riveo Vessel
ALD863 – Riveo Vessel
ALD861 – Riveo Vessel



Riveo Faucet for Bath

Specification(s):

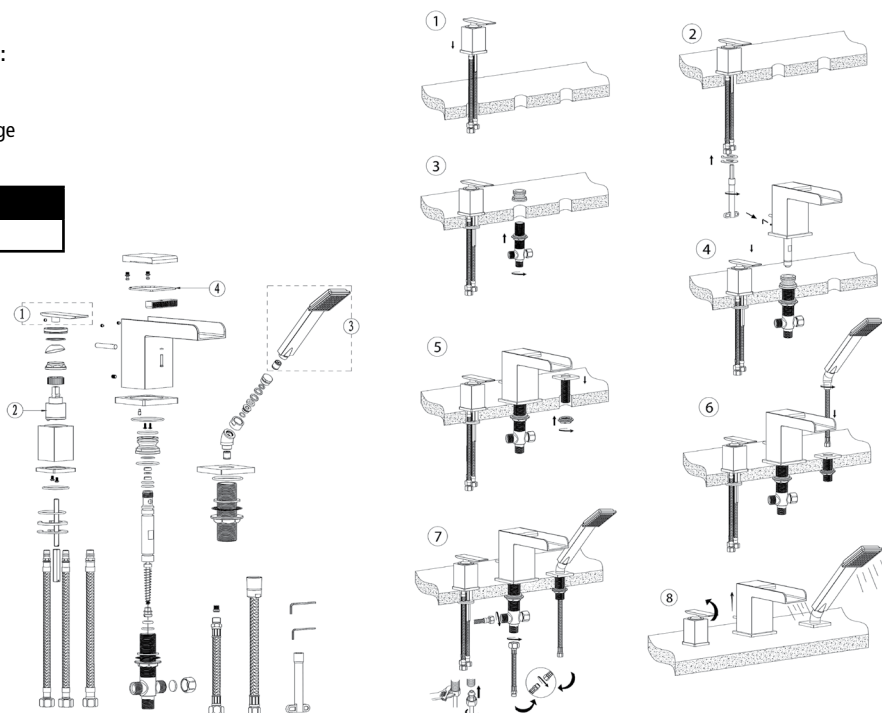
- Material: Solid Brass Construction
- Finish: Chrome
- Height: 5-1/8"
- Projection: 6-15/32"
- Other Features: Deck mounted

Included Product(s):

- Diverter system
- With hand shower
- 35 mm disc cartridge
- Aerator

PRODUCT

A219140



1	SCREWS AND FASTENERS
2	FURNITURE EQUIPMENT
3	HINGES
4	SLIDES
5	CASTERS AND LEGS
6	KITCHEN SOLUTIONS
7	CLOSET SOLUTIONS
8	LIGHTING SOLUTIONS
9	SINKS AND FAUCETS
10	OFFICE
11	SLIDING DOORS
12	GLASS HARDWARE
13	PANELS AND SURFACES
14	EDGE-BANDING
15	CABINET DOORS AND DRAWERS
16	CORBELS AND FLOOR REGISTERS
17	GLUES, SILICONES, CAULK AND INSULATING
18	TOOLS AND SECURITY
19	FINISHING PRODUCTS AND SHOP SUPPLIES
20	COMMERCIAL DISPLAY HARDWARE
21	MOLDING, RAILING AND BATHROOM HARDWARE

Bathroom Products

Riveo Bathroom Faucet



Richelieu Section 9B

Riveo Faucet for Bath

Specification(s):

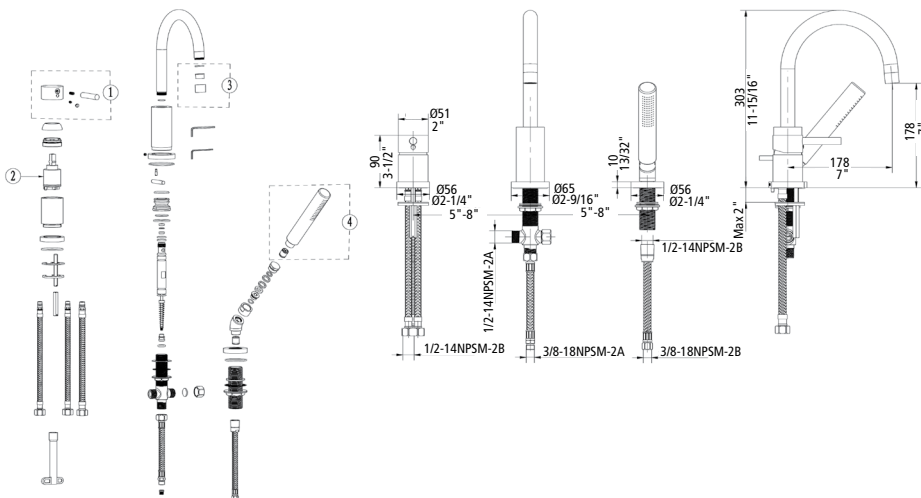
- Material: Solid Brass Construction
- Finish: Chrome
- Height: 11-15/16"
- Projection: 7"
- Diverter system
- With hand shower
- Other Features: Deck mounted

Included Product(s):

- cUPC certification
- 35 mm disc cartridge
- Limited Lifetime Warranty

PRODUCT

A211140



Riveo Faucet for Bath

Specification(s):

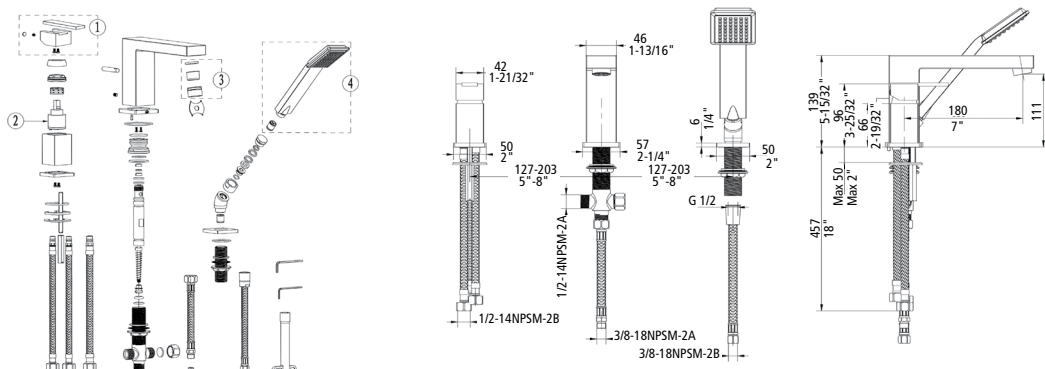
- Material: Solid Brass Construction
- Finish: Chrome
- Spray: Yes
- Height: 5-15/32"
- Projection: 7"
- Other Features: Deck mounted

Included Product(s):

- cUPC certification
- Diverter system
- 35 mm disc cartridge
- Hand shower
- Aerator
- Limited Lifetime Warranty

PRODUCT

A210140



Bathroom Products

Riveo Shower Faucet

Round wall-mounted shower set. All Riveo shower faucets have built-in stop valves which shut off the water at the shower and can control the inflow of water from the house plumbing. Pressure balance with diverter and hand shower on rail. Easy to install, these products adapt to your needs. Solid brass showerheads and bath spouts are just some of the benefits of your Riveo shower collection! CUPC Certified and limited Lifetime Warranty. These sets include a sidebar, a bath spout and a plastic hand shower.



Richelieu Section 9B

Riveo Shower Faucet

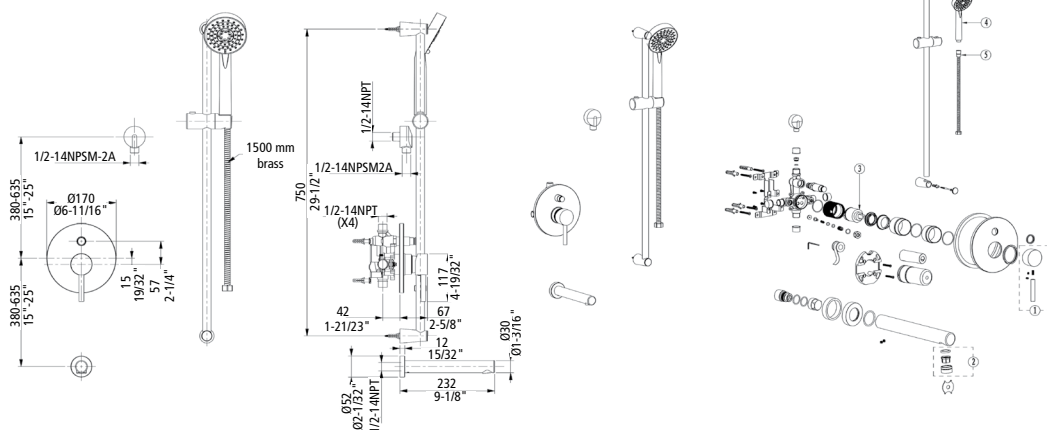
Specification(s):

- Material: Solid Brass Construction
- Finish: Chrome
- Spray: Yes
- Brass spout

- Plastic hand shower
- Height: 29-1/2"
- Projection: 9-1/8"
- Choice of Jet: Normal, Normal with Massage Spray or Massage

PRODUCT

A199140



Riveo Shower Faucet

Round shower kit.

- Pressure regulator with 3-way diverter, hand shower rail
- Brass spout
- Plastic hand shower

- Internal stop valve
- CUPC Certification
- Limited Lifetime Warranty

Important Information

- 16" (406 mm) brass shower arm
- 8" (203 mm) brass shower head

Projection:

- Spout: 8-7/16" (214 mm)
- Shower arm: 15-7/16" (392 mm)

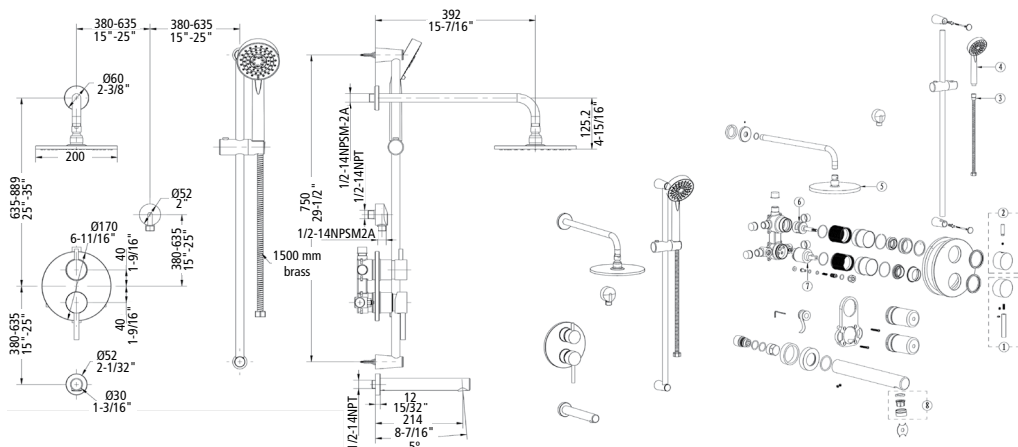
Specification(s):

- Material: Solid Brass Construction
- Finish: Chrome

- Height: 29-1/2"
- Choice of Jet: Normal, Normal with Massage Spray or Massage

PRODUCT

A212140



1	SCREWS AND FASTENERS
2	FURNITURE EQUIPMENT
3	HINGES
4	SLIDES
5	CASTERS AND LEGS
6	KITCHEN SOLUTIONS
7	CLOSET SOLUTIONS
8	LIGHTING SOLUTIONS
9	SINKS AND FAUCETS
10	OFFICE
11	SLIDING DOORS
12	GLASS HARDWARE
13	PANELS AND SURFACES
14	EDGE-BANDING
15	CABINET DOORS AND DRAWERS
16	CORBELS AND FLOOR REGISTERS
17	GLUES, SILICONES, CAULK AND INSULATING
18	TOOLS AND SECURITY
19	FINISHING PRODUCTS AND SHOP SUPPLIES
20	COMMERCIAL DISPLAY HARDWARE
21	MOLDING, RAILING AND BATHROOM HARDWARE



Riveo Shower Faucet

Square wall-mounted shower set.

- Pressure balance with diverter, hand shower on rail
- Brass spout
- Plastic hand shower
- Inner stop valve

- CUPC Certification
- Limited Lifetime Warranty
- Spout projection: 8" (204 mm)

Specification(s):

- Material: Solid Brass Construction
- Finish: Chrome

- Height: 29-1/2"
- Choice of Jet: Normal, Normal with Massage Spray, Massage

PRODUCT

A206140

