



Zenit
by ALNICO

**CUSTOM-MADE CABINET DOORS
WITH LACQUERED SURFACES**

Super-Matte | Soft Texture | High Resistance



Richelieu



The European look of the super-matte **Zenit Collection** offers unlimited project opportunities for woodworking professionals to carry out any type of project.

Zenit Collection doors are the result of state-of-the-art lacquering technologies combined with the latest generation of materials, which allows you to create modern and elegant combinations for kitchens, bathrooms, closets and commercial projects.

KEY FEATURES

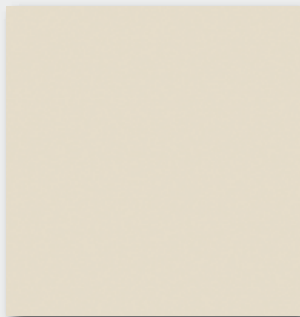
- Coated with a matte lacquer and dried using UV technology
- Excellent heat and scratch resistance
- UV and discoloration resistance
- Doors are edgebanded using PUR adhesive
- Available with matching **ABS solid color** edgebanding
- Recommended for vertical applications
- Both sides of the panels are the same color
- Easy maintenance



The **Zenit Collection**
includes trendy and
attractive super-matte solid colors.



ONE-PIECE DOOR (Slab)

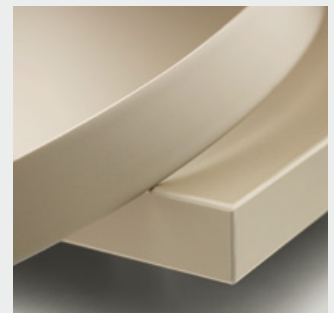


Height	
Minimum	Maximum
4"	107"
102 mm	2718 mm
Width	
Minimum	Maximum
4"	48"
102 mm	1219 mm

- We recommend the installation of a third hinge (without spring) on doors of 36" (914 mm) or more.

EDGEBOARDING*

Zenit doors are built with 1 mm edgebanding. The edgebanding is glued with a PUR adhesive, which makes it waterproof and highly durable. (Will cover 4 edges of the door.)

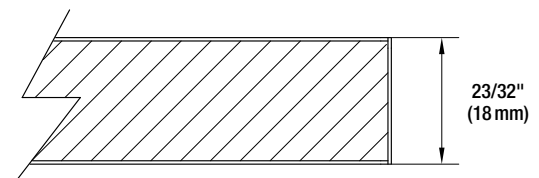


- * Matching ABS super-matte edgebanding, 1 mm thickness
Visit our website for the product code.

PROFILES

The door is made with an 18mm thick MDF panel thermofused on both sides with decorative paper and laminated. A super-matte polyester lacquer is then applied to the face of the panel while the back features a suede TFL finish.

Edges are covered with edgebanding using PUR adhesive technology.

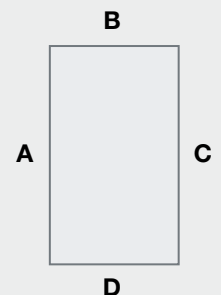


CUT-TO-SIZE PANELS AND COMPONENTS

Our cut-to-size panels and components are manufactured to your specifications. They can be edgebanded on all sides with 1 mm matching edgeband or have designated edges unfinished. These components are ideal for use as end panels, fillers, accessory parts, etc.

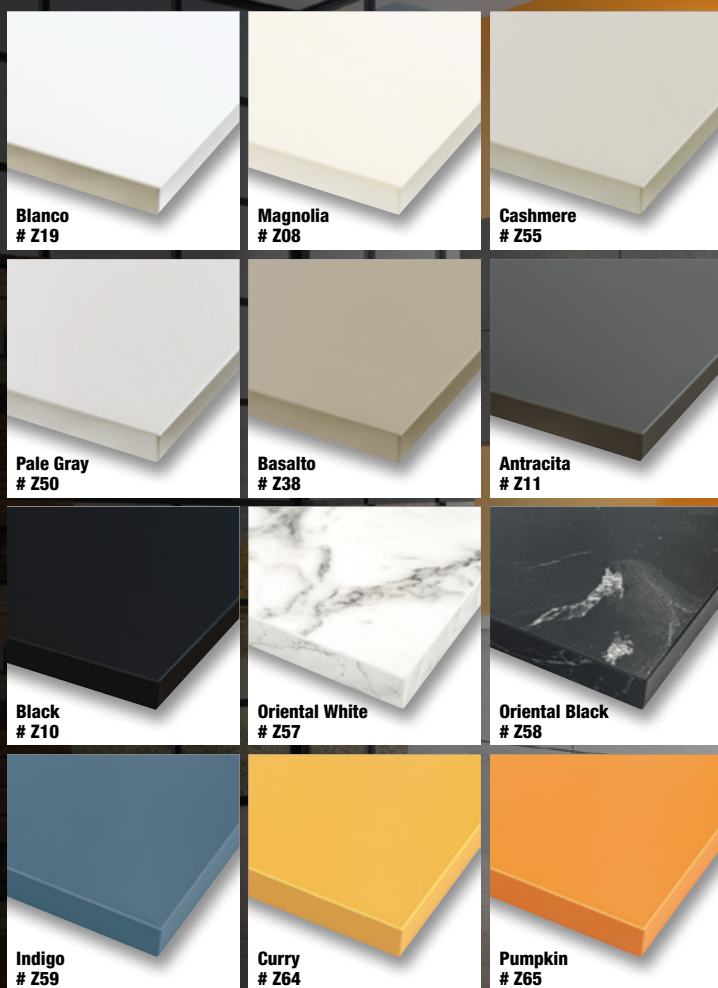
When ordering, please indicate which edges should be square and whether they should be edgebanded or not.

Note that the **minimum** length or width of a component without edgebanding is 1" (25 mm).



Specify which sides need to be edgebanded.

AVAILABLE COLORS



WITH A **EUROPEAN** LOOK, THE **LATEST**
GENERATION OF **LACQUERED**
MATERIALS ALLOW YOU TO **CREATE**
MODERN AND **ELEGANT** COMBINATIONS.



www.richelieu.com

Visit our website and use our step-by-step quick and simple web module under the **Cabinet Doors section / Zenit Collection**

