



SMART *Living*

THE ART OF ORGANIZING YOUR SPACE



R
Richelieu



SAMO

PULL-OUT DRAWER TABLE MECHANISMS



CHEO

This new line of pull-out table mechanisms is right in step with the latest in home organization and functional furnishings, especially for **small spaces**.

Whether for the kitchen, living room or guest bedroom, these hide-away tables can be used anywhere in the house, part of the trend toward, "**smart living**" versatile products that offer easy accessibility to all.

They are fastened to aluminum, telescopic slides mounted in a drawer space or in a cabinet.

Pull out the surface for a beautiful, sturdy table with models that seat two to six persons.

The pull-out mechanisms are also a quick, clever way to create more counter space for food preparation, offering extra-strong load-bearing capacity for added safety.

The tables optimize the overall layout of your kitchen by giving it modular **flexibility**.



02

03

PULL-OUT DRAWER TABLE MECHANISMS

SMART LIVING BY **Richelieu**

| REQUIRED INTERIOR DIMENSIONS | | | | | | |
|------------------------------|------------|---------------------------------------|---------------------|-----------------------|-----------------------|--------------------|
| Ref. | No. | Width | Height (min.) | Depth (min.) | Extension | Load capacity |
| SAMO | 4117112010 | 20 7/8" - 49 1/16" (530 - 1170 mm) | 4 5/16" (110 mm) | 21 11/16" (550 mm) | 40 5/16" (1024 mm) | 132 lb (60 kg) |
| CHEO | 411781122 | 22 1/8" or 22 3/8" (562 or 568 mm) | 4 7/8" (123 mm) | 21 11/16" (550 mm) | 42 5/16" (1075 mm) | 132 lb (60 kg) |
| NAXO | 4117212010 | 20 7/8" - 49 1/16" (530 - 1170 mm) | 4 5/16" (110 mm) | 21 11/16" (550 mm) | 29 11/16" (754 mm) | 132 lb (60 kg) |
| VERSOTO | 4117412010 | 45 13/16" (1163 mm) | 6 7/8" (175 mm) | 20 1/8" (510 mm) | 61 1/2" (1562 mm) | 220 lb (110 kg) |



PULL-OUT PENINSULA TABLE MECHANISMS



Just one simple movement is all it takes to pull out the **DELO** peninsula table and transform your kitchen island into a seating area.

DELO brings total **modular flexibility** to your kitchen with a 5-foot long hide-away table that comfortably accommodates up to five persons. It can also be used as an **additional workspace** for food preparation or the perfect place for helping your children with their homework while getting dinner ready.

MILO takes the functionality of a kitchen island to a whole new level. In the closed position, this pull-out table mechanism with aluminum extension slides blends right in as another countertop. The concealed space could be used for workspaces or for preparing food.

Pull out the **MILO** to transform the area into an open **kitchen** for entertaining guests at brunch or for cocktails while you prepare the meal.



MILO

04
05

PULL-OUT PENINSULA TABLE & WORKTOP MECHANISMS
SMART LIVING BY **Richelieu**

| REQUIRED INTERIOR DIMENSIONS | | | | | | |
|------------------------------|--|----------------------|--------------------|----------------------|---------------------|-------------------|
| Ref. | No. | Width | Height (min.) | Depth (min.) | Extension | Load capacity |
| DELO | 4117656010 | 23" (584 mm) | 3 1/8" (80 mm) | 69 1/8" (1755 mm) | 63" (1600 mm) | 132 lb (60 kg) |
| | | Opening width | Rail Height* | Depth (min.) | Extension | Load capacity |
| MILO | 4117725110 Aluminium mechanism set (rails) 4117725210 Set of 2 aluminium profiles | 96 5/8" (2454 mm) | 2 7/16" (62 mm) | 31 1/2" (800 mm) | 25 1/8" (640 mm) | 176 lb (80 kg) |

*Total Height depends on top thickness



CENTRO

LAVIDO

CONVOY PULL-OUT PANTRY SYSTEMS



Just one word best describes *CONVOY* — perfection! Kitchens are about food and the *CONVOY* pull-out pantry is the ultimate in dry storage for foods such as pasta, sugar, rice, cans or jars.

CONVOY offers one central location for storing dry foods, **easy** to access and completely visible at a glance — a real time-saver that simplifies your daily routine.

The “**smart living**” trend is about products that incite emotion. *CONVOY*’s synchronized slides, a world’s first, create a definite Wow! factor.

The *CONVOY* line is available in two versions: **LAVIDO** for cabinets with hinged doors and **CENTRO** for use with pull-out doors.



The system's **adjustable** trays are covered with anti-slip material to keep contents stable and can be mounted at any height for a totally customized organization of the storage space.

A **world-first** innovation with synchronized slides for effortless assisted opening, plus soft-stop closing.



The trays in the **LAVIDO** system offer optimum access on three sides and a clear view of all contents through transparent glass panels.



For the complete list of products, see pages 8-9.

CONVOY PULL-OUT PANTRY SYSTEMS
SMART LIVING BY **Richelieu**



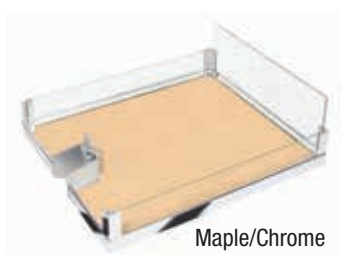
CENTRO

For a complete unit, order: 1x frame + 1x runner
+ x number of shelves

| No. | Description | Recommended internal height | Number of recommended shelves |
|----------|---------------------|--------------------------------|-------------------------------|
| 24610100 | CONVOY CENTRO Frame | 43 3/8"-47 1/4" (1100-1200 mm) | 4 |
| 24670100 | CONVOY CENTRO Frame | 67"-70 7/8" (1700-1800 mm) | 5 |
| 24690100 | CONVOY CENTRO Frame | 74 7/8"-78 3/4" (1900-2000 mm) | 5 |



| No. | Description |
|----------|----------------------|
| 24730100 | CONVOY CENTRO Runner |



Maple/Chrome



Gray/Chrome



Frame

SET OF 4 SHELVES

| No. | Description | Shelves width | Opening width required |
|------------|--------------------------------------|------------------|------------------------|
| 2571140150 | Set of 4 shelves 450 mm Maple/Chrome | 15 3/4" (400 mm) | 16 1/4" (412 mm) |
| 2573140150 | Set of 4 shelves 500 mm Maple/Chrome | 17 3/4" (450 mm) | 18 1/8" (462 mm) |
| 2574140150 | Set of 4 shelves 600 mm Maple/Chrome | 21 5/8" (550 mm) | 22 1/8" (562 mm) |
| 2571140100 | Set of 4 shelves 450 mm Gray/Chrome | 15 3/4" (400 mm) | 16 1/4" (412 mm) |
| 2573140100 | Set of 4 shelves 500 mm Gray/Chrome | 17 3/4" (450 mm) | 18 1/8" (462 mm) |
| 2574140100 | Set of 4 shelves 600 mm Gray/Chrome | 21 5/8" (550 mm) | 22 1/8" (562 mm) |

If you need more than 4 shelves, order: 1x set of 4 shelves + required number of single shelves

SINGLE SHELF

| No. | Description | Shelf width | Opening width required |
|------------|----------------------------------|------------------|------------------------|
| 1571140150 | Single shelf 450 mm Maple/Chrome | 15 3/4" (400 mm) | 16 1/4" (412 mm) |
| 1573140150 | Single shelf 500 mm Maple/Chrome | 17 3/4" (450 mm) | 18 1/8" (462 mm) |
| 1574140150 | Single shelf 600 mm Maple/Chrome | 21 5/8" (550 mm) | 22 1/8" (562 mm) |
| 1571140100 | Single shelf 450 mm Gray/Chrome | 15 3/4" (400 mm) | 16 1/4" (412 mm) |
| 1573140100 | Single shelf 500 mm Gray/Chrome | 17 3/4" (450 mm) | 18 1/8" (462 mm) |
| 1574140100 | Single shelf 600 mm Gray/Chrome | 21 5/8" (550 mm) | 22 1/8" (562 mm) |

IMPORTANT: Interior installation depth required: min. 19 3/4" (500 mm)

LAVIDO

For a complete unit, order: 1x frame + 1x runner
+ x number of shelves

| No. | Description | Recommended internal height | Number of recommended shelves |
|----------|---------------------|-----------------------------------|-------------------------------|
| 23610100 | CONVOY LAVIDO Frame | 43 3/8"-47 1/4" (1100-1200 mm) | 4 |
| 23670100 | CONVOY LAVIDO Frame | 67"-70 7/8" (1700-1800 mm) | 5 |
| 23690100 | CONVOY LAVIDO Frame | 74 7/8"-78 3/4" (1900-2000 mm) | 5 |



| No. | Description |
|----------|----------------------|
| 23730100 | CONVOY LAVIDO Runner |



Maple/Chrome



Gray/Chrome



Frame

SET OF 4 SHELVES

| No. | Description | Shelves width | Opening width required |
|------------|--------------------------------------|------------------|------------------------|
| 2531140150 | Set of 4 shelves 450 mm Maple/Chrome | 15 3/4" (400 mm) | 16 1/4" (412 mm) |
| 2533140150 | Set of 4 shelves 500 mm Maple/Chrome | 17 3/4" (450 mm) | 18 1/8" (462 mm) |
| 2534140150 | Set of 4 shelves 600 mm Maple/Chrome | 21 5/8" (550 mm) | 22 1/8" (562 mm) |
| 2531140100 | Set of 4 shelves 450 mm Gray/Chrome | 15 3/4" (400 mm) | 16 1/4" (412 mm) |
| 2533140100 | Set of 4 shelves 500 mm Gray/Chrome | 17 3/4" (450 mm) | 18 1/8" (462 mm) |
| 2534140100 | Set of 4 shelves 600 mm Gray/Chrome | 21 5/8" (550 mm) | 22 1/8" (562 mm) |

If you need more than 4 shelves, order: 1x set of 4 shelves + required number of single shelves

SINGLE SHELF

| No. | Description | Shelf width | Opening width required |
|------------|----------------------------------|------------------|------------------------|
| 1531140150 | Single shelf 450 mm Maple/Chrome | 15 3/4" (400 mm) | 16 1/4" (412 mm) |
| 1533140150 | Single shelf 500 mm Maple/Chrome | 17 3/4" (450 mm) | 18 1/8" (462 mm) |
| 1534140150 | Single shelf 600 mm Maple/Chrome | 21 5/8" (550 mm) | 22 1/8" (562 mm) |
| 1531140100 | Single shelf 450 mm Gray/Chrome | 15 3/4" (400 mm) | 16 1/4" (412 mm) |
| 1533140100 | Single shelf 500 mm Gray/Chrome | 17 3/4" (450 mm) | 18 1/8" (462 mm) |
| 1534140100 | Single shelf 600 mm Gray/Chrome | 21 5/8" (550 mm) | 22 1/8" (562 mm) |

IMPORTANT: Interior installation depth required: min. 19 3/4" (500 mm)



CONVOY PULL-OUT PANTRY SYSTEMS
SMART LIVING BY **Richelieu**



The Cavare system is the winner of multiple design prizes, including the prestigious *Red Dot Design Award*.



reddot design award

PULL-OUT SHELF SYSTEM



The minimalist design of CAVARE sliding shelves makes them a perfect fit in any room of your home. Plus, the system's bold urban look keeps pace with the current trend in **interior organizational** systems.

These sturdy steel shelves are thin and streamlined, offering superior access and visibility compared to other shelving systems on the market.

The shelves' non-slip mats and magnetic dividers let you customize your **storage space** to your exact specifications.





10
11

PULL-OUT SHELF SYSTEMS
SMART LIVING BY **Richelieu**

SHELF & PANTS SUPPORT SYSTEM



LINA



Magnetic Divider
2130100

REQUIRED INTERIOR DIMENSIONS

| Ref. | No. | Width | Depth (min.) | Height (min.) |
|--------|----------|--|---------------------|--------------------|
| CAVARE | 2131110 | 16 1/4" to 16 1/2" (412 to 418 mm) | 19 3/4" (500 mm) | 5 1/8" (130 mm) |
| | 2131710 | 22 1/8" to 22 3/8" (562 to 568 mm) | 19 3/4" (500 mm) | 5 1/8" (130 mm) |
| | 2132310 | 33 15/16" to 34 3/16" (862 to 868 mm) | 19 3/4" (500 mm) | 5 1/8" (130 mm) |
| LINA | 21430110 | 17 1/4" (440 mm) | 20 1/2" (520 mm) | 3 1/2" (90 mm) |

Slides must be ordered separately

PULL-OUT BASKET OR TOWEL BAR SYSTEMS



The Cavare line is growing with the new **SNELLO** sliding systems, the solution to contemporary design for lower cabinets.

The **minimalist** basket design allows for ergonomic access to both sides of the basket.

With soft-stop closing, full-extension drawers, towel bar version and anti-slip mats, **SNELLO** has all the features for **tomorrow's storage**.

RETRACTABLE SYSTEM

12

13

PEGASUS is a retractable storage system for accessing objects in the upper portion of the cabinets.

Its integrated handle combines ergonomics and effortless movement with high storage capacity, which makes this system a **must** for upper cabinets.



PEGASUS



PULL-OUT BASKET SYSTEMS
SMART LIVING BY **Richelieu**



BROOM CLOSET STORAGE SYSTEM

SESAM is the effective **solution** for the tidy storage of cleaning supplies.

This suspension system mounted on the side allows the **optimal** organization of space in the broom closet.

Includes 3 shelves with hanging hooks, for storing and suspending all cleaning articles, and a vacuum hose holder.

SESAM



| Ref. | | No. | REQUIRED INTERIOR DIMENSIONS | | |
|---------|--------|---------------|------------------------------|-----------------------|-----------------------|
| | | | Width (min.) | Depth (min.) | Height (min.) |
| SNELLO | Basket | 20150110 | 4 3/8" (110 mm) | 18 11/16" (475 mm) | 20 1/2" (520 mm) |
| | Basket | 20200110 | 6 5/16" (160 mm) | 18 11/16" (475 mm) | 20 1/2" (520 mm) |
| | Basket | 20300110 | 10 1/4" (260 mm) | 18 11/16" (475 mm) | 20 1/2" (520 mm) |
| | Towel | 20151110 | 4 3/8" (110 mm) | 18 11/16" (475 mm) | 22 13/16" (580 mm) |
| PEGASUS | | WEBKIT1010887 | 30 3/4" (780 mm) | 11" (280 mm) | 26 1/4" (677 mm) |
| | | WEBKIT1010888 | 42 1/2" (1080 mm) | 11" (280 mm) | 26 1/4" (677 mm) |
| SESAM | | 6356110 | 14 1/4" (362 mm) | 17" (430 mm) | 29 5/8" (752 mm) |



Magnetic Divider
2130100

ONE 2 FOUR

RECYCLING & STORAGE SYSTEMS

One2Four, the versatile, customizable solution for the storage of waste and recycling materials.

One2Four is a simple system consisting of a functional mat cut to fit the bottom of any drawer and a selection of bins for collecting waste according to your household's needs.

One2Four functions as trash can, recycling bin, storage for cleaning products or other items simply through a variety of lids that accommodate different tasks.





Lid with Bio Filter
5003100



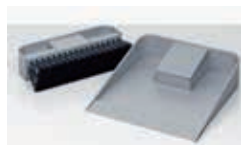
Individual Lid
5662100



Storage Lid
5002100



Cleaning Product Insert
5004100



Dustpan and Broom
5006100



Individual Lid
5670100
5671100
5672100

| No. | For Bins |
|----------------|------------------|
| 5003100 | 5178100, 5175100 |
| 5662100 | 5170100 |
| 5002100 | 5178100, 5175100 |
| 5004100 | 5170100 |
| 5006100 | 5170100 |
| 5670100 | 5135100 |
| 5671100 | 5136100 |
| 5672100 | 5137100 |



Anti-Slip Mat (can be cut to size)
5181100



5135100



5136100



5137100



5178100



5175100



5170100

PRODUCT DIMENSIONS

| Ref. | | No. | Width | Depth | Height | Capacity |
|----------|---------------|----------------|----------------------|-----------------------|----------------------|----------|
| One2Four | Anti-slip mat | 5181100 | 46 1/2" (1181 mm) | 23 5/8" (600 mm) | | |
| One2Four | Bin | 5135100 | 5 9/16" (141 mm) | 8 5/16" (211 mm) | 10 7/8" (275 mm) | 6 L |
| | Bin | 5136100 | 8 5/16" (211 mm) | 11 1/8" (282 mm) | 10 7/8" (275 mm) | 13.5 L |
| | Bin | 5137100 | 8 5/16" (211 mm) | 16 11/16" (423 mm) | 10 7/8" (275 mm) | 21 L |
| | Bin | 5178100 | 9 1/16" (230 mm) | 6 1/32" (153 mm) | 6 11/16" (170 mm) | 4.2 L |
| | Bin | 5175100 | 9 1/16" (230 mm) | 6 1/32" (153 mm) | 8 21/32" (220 mm) | 5.5 L |
| | Bin | 5170100 | 8 1/2" (216 mm) | 12" (306 mm) | 9" (229 mm) | 12 L |



KITCHEN SOLUTIONS



FOLDING CONCEPTA 25

FOLDING & SLIDING DOOR SYSTEMS



Sliding and lateral opening systems are among the newest, most exciting trends in interior design.

These functional **space-savers** are exceptional enhancements to any room. Sliding doors can bring an elegant look to a spacious entryway or offer a practical solution for concealing cabinets.

FOLDING CONCEPTA 25

sliding system lets you open, fold and store doors on the sides of cabinets or in a wall recess.

This system is available as cabinet doors or as full doors.



SLIDING DOOR SYSTEMS

The **APERTO 40F** system can accommodate up to 7 doors in the same opening, plus one hinged door, creating a screen with cabinet fronts.

Perfect for frequently opened cabinets, this system offers unrestricted access to the entire width of the cabinet, letting cabinet fronts stacked out of sight behind a hinged door or used as visible design elements while stationary.



APERTO 40F

The **GHOST** sliding system is built into the door, making it completely **invisible** whether the door is closed or open.



GHOST

FOLDING & SLIDING DOOR SYSTEMS

SMART LIVING BY **Richelieu**

| Ref. | No. | Handedness | Description | Track length |
|---------------------|-----------------------|--------------------|---|--------------------|
| FOLDING CONCEPTA 25 | 18924002 | Right-Hand Opening | Mecanism for 1 pair of cabinet doors | - |
| | 18924003 | Left-Hand Opening | 49 1/4" to 72 7/8" (1250 to 1850 mm) high | - |
| | 18924000 | Right-Hand Opening | Mecanism for 1 pair of full doors | - |
| | 18924001 | Left-Hand Opening | 72 7/8" to 102 3/8" (1850 to 2600 mm) high | - |
| | 189243222610 | - | Top track | 102 3/8" (2600 mm) |
| APERTO 40F | 189240041310 | - | Bottom track | 51 1/4" (1300 mm) |
| | 8917797 | - | Mecanism for 1 sliding door, (88 lb (40 kg) | - |
| | 8917798 | - | Part for stacking area | - |
| | 891825010 | - | Carriage track, guide & bracket | 98 1/2" (2500 mm) |
| | 891825110 | - | Carriage track, guide & bracket | 137 3/4" (3500 mm) |
| | | Roller position | | |
| GHOST | 8941178200122W | Upper | For door thickness min. 1 9/16" (40 mm) | 38 5/8" (980 mm) |
| | 8941178205122W | Lower | and weight capacity per door up to 110 lb (50 kg) | 38 5/8" (980 mm) |



CLICK
FOLDAWAY
SOFA BED

FOLDAWAY BED & SOFA BED SYSTEMS



Designer: Giulio Manzoni

Richelieu offers a wide selection of safe and comfortable hardware mechanism to respond to the growing needs of modular furniture. Optimize your space by transforming it into a multi-purpose room for both day and night. Make the most of your living space with this **modular system** by converting the comfortable sofa into a cozy bed.



FOLDAWAY BED & SOFA BED
SYSTEMS



DONA
KANGAROO STYLE



The Kangaroo lift bed designed by Gianfranco Pessotto offers an **easy-access** storage area under the mattress and elevates to a horizontal position to facilitate bed-making.

Designer: Gianfranco Pessotto

| Ref. | Description | Webkit No. | Bed size | Bed frame dimensions (Width x Length) |
|--------------|------------------------|----------------------|--------------------|---------------------------------------|
| CLICK | Foldaway sofa bed set* | WEBKIT1010862 | Double (54" x 75") | 55 1/8" x 76" (1400 x 1930 mm) |
| | | WEBKIT1010863 | Queen (60" x 80") | 61" x 81 1/8" (1550 x 2060 mm) |
| DONA | Kangourou style set** | WEBKIT1010761 | Simple (39" x 75") | 40 3/16" x 76" (1020 x 1930 mm) |
| | | WEBKIT1010762 | Double (54" x 75") | 55 1/8" x 76" (1400 x 1930 mm) |
| | | WEBKIT1010763 | Queen (60" x 80") | 61" x 81 1/8" (1550 x 2060 mm) |
| | | WEBKIT1010764 | King (76" x 80") | 77 3/16" x 81 1/8" (1960 x 2060 mm) |

*Include lift mechanism, slatted bed frame, hardware and sofa mechanism

**Include lift mechanism, hardware and slatted bed frame



LEAF FOR CABINET

LED LIGHTING KITCHEN AND FURNITURE



LEAF FOR DRAWER

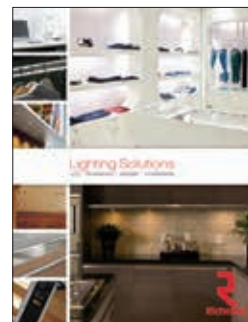
Richelieu presents a sleek selection of lighting to complement your cabinets, closets, and furniture.

Our newest offerings include a sophisticated line of Italian LEDs that are **versatile**, energy efficient, and perfectly catered to your needs and tastes: LEAF, GOCCIA, FOLIO, KITE, SKATE and CUBIK.

LED LEAF is perfectly designed for inside cabinet or drawer.

Equipped with an electronic presence sensor, the sensor detects when doors or drawers are open, lighting immediately.

Once closed, there is a 30-second delay before automatically shutting off.



LIGHTING SOLUTIONS



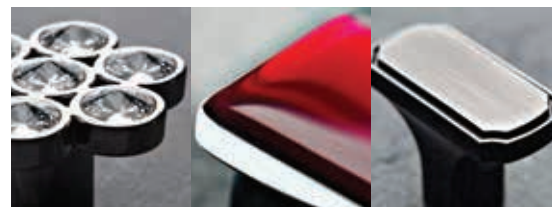
| Ref. | No./Description | Power supply |
|------------------|---|-----------------------|
| LEAF For cabinet | 16 1/8" (1.92w) 108120410 22" (2.64w) 108120560 33 7/8" (4.08w) 108120860 45 3/4" (5.52w) 108121160 | 51215 or 51230 |
| LEAF For drawer | 17 3/4" (1.68w) 108120450 23 5/8" (2.4w) 108120600 35 3/8" (3.84w) 108120900 47 1/4" (5.28w) 108121200 | 51215 or 51230 |
| GOCCIA | 29 1/8" (2.88w) 10880229 35 1/2" (3.84w) 10880335 41 3/4" (4.56w) 10880441 54 1/4" (6w) 10880554 | 51215 or 51230 |
| FOLIO | 9" (0.96w) 1081240109 Neutral white 1081220109 Warm white 1081220222 22" (2.4w) 1081240222 Neutral white 1081220222 Warm white | 51215 or 51230 |
| KITE 1.6W | 108124010* Neutral white 108122010* Warm white 118124010 Neutral white 118122010 Warm white | 51215 or 51230 |
| SKATE 1.6W | 109124030* Neutral white 109122030* Warm white 119124030 Neutral white 119122030 Warm white | 51215 or 51230 |
| METRIS 1.7W | 159121010 Cool white 159122010 Warm white | 52415 |
| CUBIK 1.2W | 460121170 Cool white 460122170 Warm white | 7779 or 7890 |

*Master with touch function and dimmer



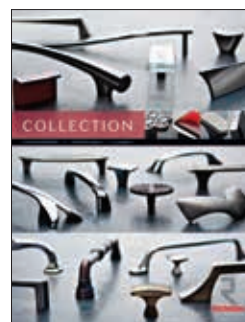
PULLS & KNOBS

BEYOND COMPARISON



Richelieu decorative hardware — **pure elegance** and sophisticated design. Pieces that stand out as miniature masterpieces in their own right.

Design and functionality inspired by the latest market trends: Contemporary style with straight edges and smooth surfaces; Transitional pulls and knobs in elegant, timeless shapes; or Industrial with a distressed metal look.



DECORATIVE HARDWARE COLLECTION

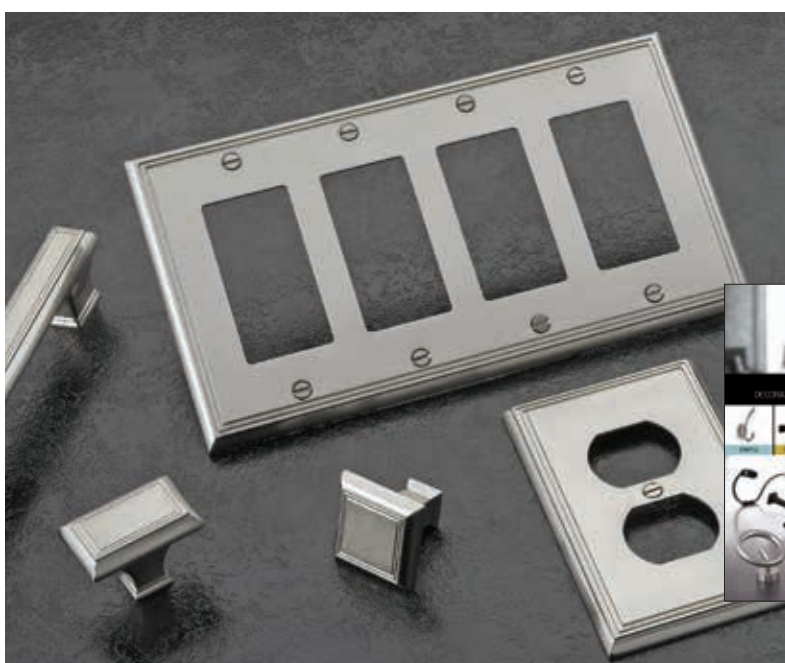


HOOKS & WALL PLATES

FUNCTION & DESIGN

Efficient **organizing** solutions, these practical and stylish hooks are available in a variety of styles and finishes.

Inspired by our Collections, our decorative wall plates and switches perfectly match our different styles including Contemporary and Transitional.



HOOKS & WALL PLATES
 COLLECTION



SMART LIVING concept creates more space and adds functionality, ergonomics and flexibility to any living space.



Consult our wide range of brochures featuring **SMART LIVING** Solutions.

CANADA

Tel.: 1 800 361-6000 • Fax: 1 800 363-0193

ALBERTA

Calgary
Edmonton

BRITISH COLUMBIA

Kelowna
Vancouver
Victoria

MANITOBA

Winnipeg

NEW BRUNSWICK

Moncton

NEWFOUNDLAND

St. John's

NOVA SCOTIA

Halifax

ONTARIO

Barrie
Kitchener
Mississauga
Ottawa
Sudbury
Thunder Bay
Toronto

QUÉBEC

Laval
Montréal
Québec

SASKATCHEWAN

Regina
Saskatoon

UNITED STATES

Tel.: 1 800 619-5446 • Fax: 1 800 876-7454

CONNECTICUT

Hartford

FLORIDA

Dania Beach
Hialeah
Pompano Beach
Riviera Beach

GEORGIA

Atlanta
Savannah

ILLINOIS

Chicago

INDIANA

Indianapolis

KENTUCKY

Louisville

MASSACHUSETTS

Boston

MICHIGAN

Detroit

NEW JERSEY

Avenel
Lincoln Park

NEW YORK

New York
Syracuse

NORTH CAROLINA

Charlotte
Greensboro
Raleigh

OHIO

Cincinnati
Cleveland
Columbus

SOUTH CAROLINA

Greenville

TENNESSEE

Nashville

WASHINGTON

Seattle

 **Richelieu**
richelieu.com

