

LIGHTING LAYOUT DESIGN SERVICE

REQUEST FORM

Date Submitted:	
Name:	
Account Number:	
Company Name:	
Phone Number:	
Email Address:	
Company Address:	
Project Name:	<i>e.g: Smith Residence, Showroom</i>
Area Name:	<i>e.g: Kitchen, Bathroom, Closet, Bookshelves</i>
Richelieu Sales Rep:	

REQUEST TYPE

<input type="checkbox"/>	Parts List
<input type="checkbox"/>	Lighting Layout and Parts List

DEPOSIT NOTICE

A \$30 deposit is required and will be **credited** after the lighting order is processed.

Select method of payment below to approve:

<input type="checkbox"/>	Invoice (Net30)
<input type="checkbox"/>	Credit card (COD)

Elevation and floor plans with **DIMENSIONS** are **required**. PDF or JPEG format in the best resolution possible. Recommend floorplans, elevations, and renderings if available.

NOTE ON DRAWINGS:

- Cabinet dimensions (width, height, etc. of each lighting area)
- Wall outlets (if existing)
- Lighting zones (if you need multiple switches for more than one area of lighting)

Electrical ***REQUIRED RESPONSE**

No electrician will be hired. Plug & play lighting system. (SPECIFY OUTLET LOCATIONS IF EXISTING)

The electrician will run wiring based on job site conditions. Select power supply preference: Plug-in Hardwire

Lighting layout placement of power supplies, cables and control options are to be used as a guide to connect the lighting system.

Final installation locations are based on job site professionals and should be done in accordance with local electrical codes. Additional extension cables could be required.

Single Kelvin (1 CCT)

Super Warm White (2700 K) Warm White (3000 K) Neutral White (4000 K)

D-Motion Kelvin (DM)

D-Motion (2700 K - 4000 K)



Specify how the 1 CCT lighting will be controlled

Wireless remote 1-zone 3-zone

Smart dimming BTRF Bluetooth wireless wall dimmer
Wall dimmer + LuminR phone app + Alexa/Google

1-zone 2-zone

Wall dimmer Traditional 120V switch

Cabinet Sensor Wired Wireless

Motion Sensor Wired Wireless

Switch by others *Traditional 120V switches only*

Specify how the DM lighting will be controlled

Wired, touch dimmer

Wireless dimmer, 3-zone

Richelieu Phone App
Wi-Fi (*compatible with Alexa/Google*)

Only specific lighting products are available in D-Motion.
Cannot use DM accessories with single kelvin accessories.

Product specification sheets available at www.richelieu.com

Cabinet specifications

Framed cabinets: Is the bottom run of the cabinets flush? Yes No

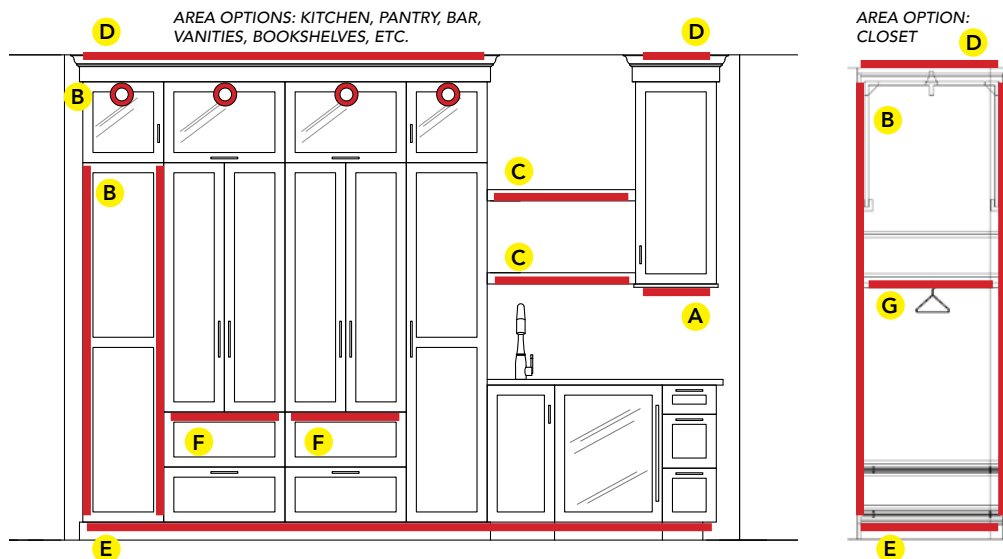
Frameless cabinets: How high is the light valence? (if applicable)

For recessed applications, what is the material thickness? Gables: _____ Bottom: _____

Lighting placement

A	<input type="checkbox"/>	Under cabinet
B	<input type="checkbox"/>	Cabinet interior
C	<input type="checkbox"/>	Floating shelves
D	<input type="checkbox"/>	Above cabinet
E	<input type="checkbox"/>	Toe kick
F	<input type="checkbox"/>	Drawer
G	<input type="checkbox"/>	Closet rod

If more than one is selected, please designate in notes below.



Product lighting recommendations

Product specification sheets available at www.richelieu.com

Linear

Single kelvin lighting. Lighting noted ** also available in D-Motion.

**** FlexyLED AT6**
Recess or surface-mount, milky flexible LED
1/4" (6 mm) x 1/4" (6 mm)

**** Apex profile with FlexyLED HE6PW**
Recess milled groove, 3/8" W x 7/16" D

Assembly kit (recess or surface-mount)
Cut-to-size 8mm uncoated tape (197" L) and
aluminum extrusion (3/4" W x 7/16" H x 96" L)

Puck

Single kelvin lighting. Lighting noted ** also available in D-Motion.

**** Holl BH SP** Surface-mount
 Black Steel

**** Holl TH** Recess bore Ø 73 mm
 Black Steel

**** Holl BH** Recess in blind groove
 Black Steel

**** Atom LED** Recess bore Ø 57 mm Surface-mount Black Satin Nickel White

Orion LED, 3CCT, 2.7W Recess bore Ø 57 mm Aluminum Black Chrome White

Orion HP LED, 3CCT, 4W Recess bore Ø 66 mm Black Satin Nickel White

Toe Kick

Single kelvin lighting. Lighting noted ** also available in D-Motion.

**** FlexyLED AT6**
Recess or surface-mount, milky flexible LED, 1/4" (6 mm) x 1/4" (6 mm)

FlexyLED HE CR
Surface-mount, clear resin silicone LED, various lengths

Drawer

Single kelvin lighting.

Pollux LED with sensor
Surface-mount, linear cut-to-size

Baski LED with sensor
Surface-mount, various linear lengths

Hiddi LED with sensor
Surface-mount, 3 7/8" L X 1" W X 9/16" H

Closet rod

Single kelvin lighting.

Goccia LED
Built-in sensor only
Assembled in various lengths

Castor Cuttable LED
Built-in sensor or switch (sold separately)
Assembled 48" length (cuttable)

Assembly kit
Sensor or switch (sold separately)
96" length rod and various lengths tape light (cuttable)

Specialty products

Subby, double A-USB charging port **Must specify location(s) on drawings.**

Specify other product(s)

Notes