

**INDUSTRIAL** Insert Carbide  
**Shaper Cutters**



**Warning:** Before use, read shaper cutter safety guidelines on page 374.



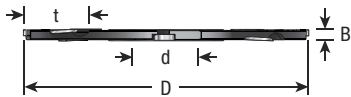
Safety guards have been removed for photo.

## GROOVING

*With Scorer 4mm to 6mm*

Hard wearing steel body complete with tungsten carbide knives and scorer for improved finish. Suitable for producing grooves and slots in softwood, hardwood and man-made boards (with or without coating) on a spindle molder.

Can be used with spacer rings for comb jointing.

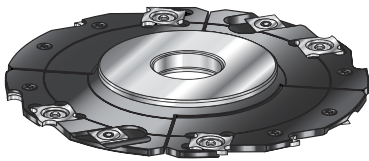


ØD	B	Teeth	Ød	Max. t	RPM	Repl. Knife		Tool No.
125mm(5)	4mm(5/32)	4+4	1-1/4	35mm(1-3/8)	6,100-10,500	RCK-18	RCK-71	<b>61451</b>
125mm(5)	5mm(3/16)	4+4	1-1/4	35mm(1-3/8)	6,100-10,500	RCK-19	RCK-71	<b>61453</b>
125mm(5)	1/4	4+4	1-1/4	35mm(1-3/8)	6,100-10,500	RCK-33	RCK-71	<b>61466</b>
150mm(5-7/8)	4mm(5/32)	4+4	1-1/4	45mm(1-3/4)	5,200-8,900	RCK-18	RCK-71	<b>61455</b>
150mm(5-7/8)	5mm(3/16)	4+4	1-1/4	45mm(1-3/4)	5,200-8,900	RCK-19	RCK-71	<b>61456</b>
150mm(5-7/8)	6mm(15/64)	4+4	1-1/4	45mm(1-3/4)	5,200-8,900	RCK-33	RCK-71	<b>61457</b>
180mm(7-1/16)	4mm(5/32)	8+8	1-1/4	55mm(2-5/32)	4,200-7,200	RCK-18	RCK-71	<b>61458</b>
180mm(7-1/16)	5mm(3/16)	8+8	1-1/4	55mm(2-5/32)	4,200-7,200	RCK-19	RCK-71	<b>61459</b>
180mm(7-1/16)	6mm(15/64)	8+8	1-1/4	55mm(2-5/32)	4,200-7,200	RCK-33	RCK-71	<b>61461</b>

## ADJUSTABLE GROOVING

*With Scorer 4mm to 7.5mm*

Hard wearing steel body complete with tungsten carbide knives and scorer for improved finish. Suitable for producing various thickness grooves and slots in softwood, hardwood and man-made boards (with or without coating) on a spindle molder. Cutting width can be adjusted in 0.1mm increments by using supplied spacer rings.



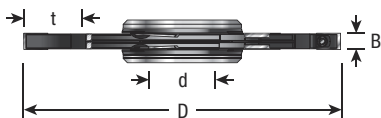
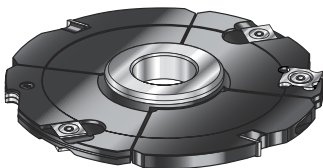
ØD	B	Teeth	E	Ød	Max. t	RPM	Repl. Knife		Tool No.
160mm(6-5/16)	4 to 7.5mm(5/32 to 19/64)	8+4	6.35(1/4)	1-1/4	30mm(1-3/16)	4,800-8,300	RCK-18	RCK-71	<b>61350</b>
180mm(7-1/16)	4 to 7.5mm(5/32 to 19/64)	8+4	6.35(1/4)	1-1/4	40mm(1-1/2)	4,300-7,500	RCK-18	RCK-71	<b>61352</b>

Replacement parts: Blade nut for RCK-18 #67172 / RCK-71 #67056; Torx key #5090.

## 3 PART ADJUSTABLE GROOVING

*With Scorer 4mm to 15.5mm*

Hard wearing steel body complete with tungsten carbide knives and scorer for improved finish. Suitable for producing various thickness grooves and slots in softwood, hardwood and man-made boards (with or without coating) on a spindle molder. Cutting width can be adjusted in 0.1mm increments by using supplied spacer rings.



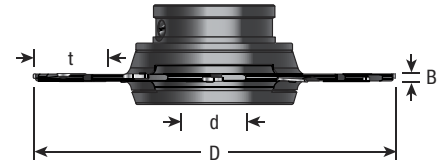
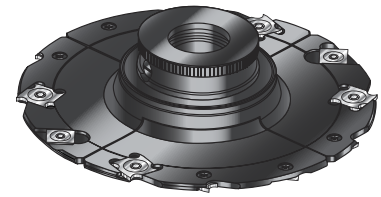
ØD	B	Teeth	Ød	Max. t	RPM	Repl. Knife			Tool No.
150mm(5-7/8)	4 to 15.5mm(5/32 to 5/8)	2+4+4	1-1/4	45mm(1-3/4)	5,500-8,500	AMA-17	RCK-18	RCK-71	<b>61354</b>

Included shim set #67208.

## ADJUSTABLE GROOVING

### With Scorer And Ring Nut

Hard wearing steel body complete with tungsten carbide knives and scorer for improved finish. Suitable for producing various thickness grooves and slots in softwood, hardwood and man-made boards (with or without coating) on a spindle molder. Cutting width can be adjusted in 0.1mm increments by special threaded bushing and scale without removing the cutter from the spindle.



### With Scorer And Ring Nut 4mm to 7.5mm

ØD	B	Teeth	Ød	Max. t	RPM	Repl. Knife		Tool No.
160mm(6-5/16)	4 to 7.5mm(5/32 to 19/64)	8+4	1-1/4	30mm(1-3/16)	4,800-8,300	RCK-18	RCK-71	<b>61345</b>
180mm(7-1/16)	4 to 7.5mm(5/32 to 19/64)	8+4	1-1/4	40mm(1-1/2)	4,300-7,500	RCK-18	RCK-71	<b>61346</b>

Replacement Parts: Allen Cap Screw for 61346 #67006.



### With Scorer And Ring Nut 8mm to 24mm

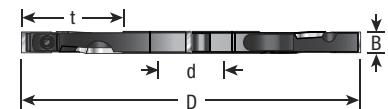
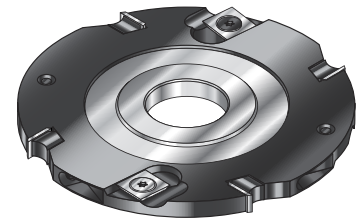
ØD	B	Teeth	Ød	Max. t	RPM	Repl. Knife		Tool No.
160mm(6-5/16)	8 to 15mm(5/16 to 19/32)	4+4	1-1/4	30mm(1-3/16)	4,800-8,300	AMA-17	RCK-70	<b>61340</b>
160mm(6-5/16)	12.5 to 24mm(1/2 to 15/16)	4+4	1-1/4	30mm(1-3/16)	4,800-8,300	AMA-19	RCK-70	<b>61342</b>
180mm(7-1/16)	8 to 15mm(5/16 to 19/32)	4+4	1-1/4	40mm(1-1/2)	4,300-7,500	AMA-17	RCK-70	<b>61343</b>



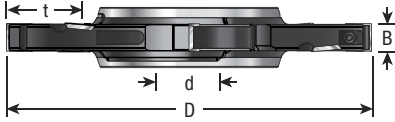
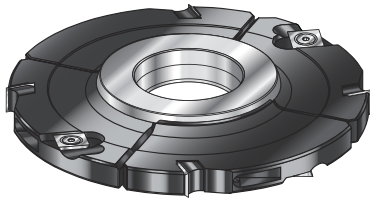
## GROOVING

### With Scorer 8mm to 12mm

Hard wearing steel body complete with tungsten carbide knives and scorer for improved finish. Suitable for producing grooves and slots in softwood, hardwood and man-made boards (with or without coating) on a spindle molder.



ØD	B	Teeth	Ød	Max. t	RPM	Repl. Knife		Tool No.
125mm(5)	8mm(5/16)	4+4	1-1/4	35mm(1-3/8)	6,100-10,500	AMA-17	RCK-70	<b>61411</b>
125mm(5)	10mm(13/32)	4+4	1-1/4	35mm(1-3/8)	6,100-10,500	AMA-18	RCK-70	<b>61412</b>
125mm(5)	12mm(15/32)	4+4	1-1/4	35mm(1-3/8)	6,100-10,500	AMA-19	RCK-70	<b>61413</b>
125mm(5)	1/2	4+4	1-1/4	35mm(1-3/8)	6,100-10,500	AMA-12	RCK-70	<b>61422</b>
150mm(5-7/8)	8mm(5/16)	4+4	1-1/4	45mm(1-3/4)	5,200-8,900	AMA-17	RCK-70	<b>61414</b>
180mm(7-1/16)	8mm(5/16)	4+8	1-1/4	55mm(2-5/32)	4,200-7,200	AMA-17	RCK-70	<b>61417</b>
180mm(7-1/16)	10mm(13/32)	4+8	1-1/4	55mm(2-5/32)	4,200-7,200	AMA-18	RCK-70	<b>61418</b>
180mm(7-1/16)	12mm(15/32)	4+8	1-1/4	55mm(2-5/32)	4,200-7,200	AMA-19	RCK-70	<b>61419</b>



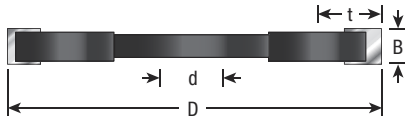
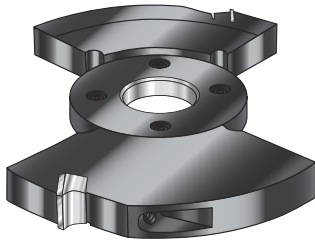
## ADJUSTABLE GROOVING

*With Scorer 8mm to 24mm*

Hard wearing steel body complete with tungsten carbide knives and scorer for improved finish. Suitable for producing various thickness grooves and slots in softwood, hardwood and man-made boards (with or without coating) on a spindle molder. Cutting width can be adjusted in 0.1mm increments by using supplied spacer rings.



ØD	B	Teeth	Ød	Max. t	RPM	Repl. Knife		Tool No.
160mm(6-5/16)	8 to 15mm(5/16 to 19/32)	4+4	1-1/4	30mm(1-3/16)	4,800-8,300	AMA-17	RCK-70	<b>61360</b>
160mm(6-5/16)	12.5 to 24mm(1/2 to 15/16)	4+4	1-1/4	30mm(1-3/16)	4,800-8,300	AMA-19	RCK-70	<b>61362</b>
180mm(7-1/16)	8 to 15mm(5/16 to 19/32)	4+4	1-1/4	40mm(1-1/2)	4,300-7,500	AMA-17	RCK-70	<b>61364</b>
180mm(7-1/16)	12.5 to 24mm(1/2 to 15/16)	4+4	1-1/4	40mm(1-1/2)	4,300-7,500	AMA-19	RCK-70	<b>61366</b>



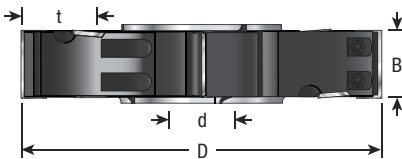
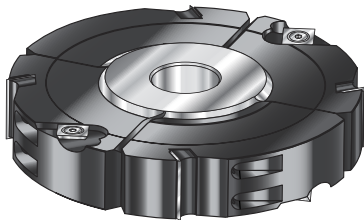
## INTERMEDIATE STACKABLE

*7mm, 15mm and 20mm Kerfs*

Expand the range of the shim-type adjustable groovers with these intermediate cutters. Works like a stackable dado set: sandwich one or more of the intermediate cutters between a pair of the groovers (model #'s 61350, 61352, 61360, 61362, 61364, 61366). Find the coarse groove width by stacking the appropriate selection of cutters on the shaper spindle, and fine-tune the width by shimming the outside groovers.



ØD	B	Teeth	Ød	Max. t	RPM	Repl. Knife		Tool No.
160mm(6-5/16)	7mm(9/32)	2	1-1/4	30mm(1-3/16)	4,800-8,300	AMA-17		<b>61384</b>
160mm(6-5/16)	15mm(19/32)	2	1-1/4	30mm(1-3/16)	4,800-8,300	ICK-15		<b>61386</b>
160mm(6-5/16)	20mm(25/32)	2	1-1/4	30mm(1-3/16)	4,300-7,500	ICK-20		<b>61388</b>



## ADJUSTABLE GROOVING AND RABBETING

*With Scorer 20.6mm to 100mm*

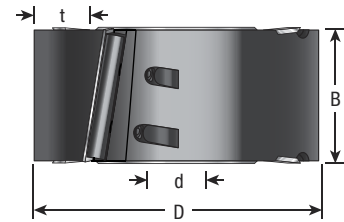
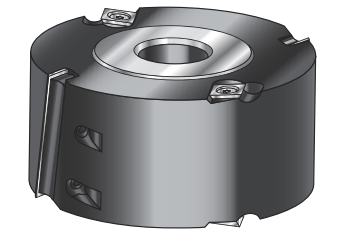
Hard wearing steel body complete with tungsten carbide knives and scorer for improved finish. Suitable for producing various thickness grooves and rabbets in softwood, hardwood and man-made boards (with or without coating) on a spindle molder. Cutting width can be adjusted in 0.1mm increments by using supplied spacer rings.



ØD	B	Teeth	Ød	Max. t	RPM	Repl. Knife		Tool No.
160mm(6-5/16)	20.6 to 40mm(13/16 to 19/16)	4+4	1-1/4	40mm(1-1/2)	4,800-8,000	ICK-20	RCK-70	<b>61355</b>
160mm(6-5/16)	30.6 to 60mm(1-7/32 to 2-3/8)	4+4	1-1/4	40mm(1-1/2)	4,800-8,000	RCK-30	RCK-70	<b>61356</b>
160mm(6-5/16)	50.6 to 100mm(2 to 3-15/16)	4+4	1-1/4	40mm(1-1/2)	4,800-8,000	ICK-50	RCK-70	<b>61357</b>
200mm(7-7/8)	20.6 to 40mm(13/16 to 19/16)	4+4	1-1/4	50mm(2)	4,000-6,500	ICK-20	RCK-70	<b>61358</b>

## SHEAR RABBETING

Cutterhead bodies available in hard wearing aluminum or steel, complete with shear angle tungsten carbide knives and scorer. Suitable for producing various thickness rabbets in softwood, hardwood and man-made boards (with or without coating) on a spindle molder. Shear angle reduces tear-out and improves quality of cut.



ØD	B	Teeth	Ød	Max. t	RPM	Repl. Knife		Tool No.
125mm(5)	30mm(1-3/16)	2+4	1-1/4	27mm(1-1/16)	6,100-10,300	ICK-30	HCK-70	<b>61480</b>
125mm(5)	50mm(2)	4+4	1-1/4	27mm(1-1/16)	6,100-10,300	ICK-50	HCK-70	<b>61482</b>
125mm(5)	60mm(2-3/8)	2+4	1-1/4	27mm(1-1/16)	6,100-10,300	ICK-60	HCK-70	<b>61484 *</b>
150mm(5-7/8)	60mm(2-3/8)	2+4	1-1/4	40mm(1-1/2)	5,200-8,600	ICK-60	HCK-70	<b>61485 *</b>

Replacement screw for RCK-70 #67154.

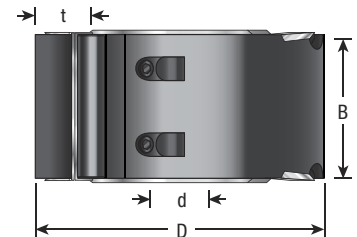
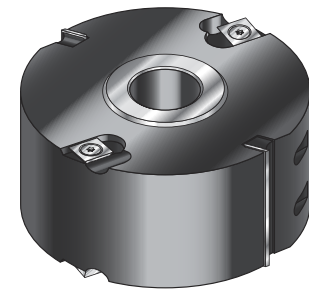
Replacement screw for RCK-30 & ICK-50 #67301.

Replacement screw for ICK-60 #67142.

\* Aluminum

## RABBETING

Cutterhead bodies available in hard wearing aluminum or steel, complete with tungsten carbide knives and scorer for improved finish. Suitable for producing various thickness rabbets in softwood, hardwood and man-made boards (with or without coating) on a spindle molder.



ØD	B	Teeth	Ød	Max. t	RPM	Repl. Knife		Tool No.
85mm(3-3/8)	50mm(2)	2+4	1-1/4	8mm(5/16)	9,000-15,000	RCK-50	RCK-70	<b>61463</b>
90mm(3-9/16)	40mm(1-1/2)	2+4	1-1/4	15mm(19/32)	8,500-12,000	RCK-40	RCK-70	<b>61464 *</b>
100mm(4)	30mm(1-3/16)	2+4	1-1/4	20mm(7/8)	7,600-12,900	ICK-30	HCK-70	<b>61460 *</b>
100mm(4)	50mm(2)	2+4	1-1/4	20mm(7/8)	7,600-12,900	RCK-50	RCK-70	<b>61462 *</b>
125mm(5)	30mm(1-3/16)	2+4	1-1/4	30mm(1-3/16)	6,100-10,000	RCK-30	RCK-70	<b>61470</b>
125mm(5)	50mm(2)	2+4	1-1/4	30mm(1-3/16)	6,100-10,000	RCK-50	RCK-70	<b>61472</b>
125mm(5)	50mm(2)	2+4	1-1/4	30mm(1-3/16)	6,100-10,000	RCK-50	RCK-70	<b>61465 *</b>
125mm(5)	60mm(2-3/8)	2+4	1-1/4	30mm(1-3/16)	6,100-10,000	ICK-60	RCK-70	<b>61467</b>

\*Aluminum

CUT YOUR STOCK TO A

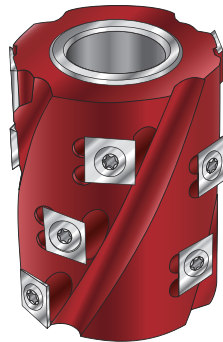
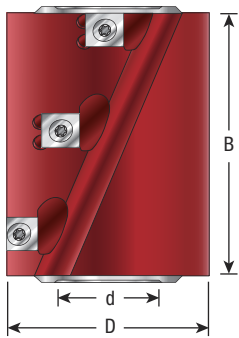
**GLASS  
SMOOTH**

*Finish!*



## SPIRAL PLANER/JOINTING

Hard wearing aluminum body complete with spiral positioned tungsten carbide knives. Suitable for planing and jointing in softwood, hardwood and man-made boards on a spindle molder. Can be used with a bearing guide and ring fence for planing and routing curved work pieces with a template.

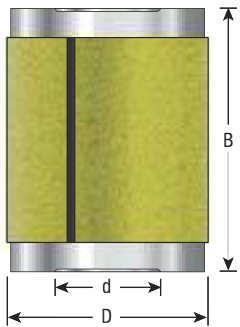


ØD	B	Teeth/Insert Knives	Ød	RPM	Repl. Knife	Rub Collar	Tool No.
62mm(2-1/2)	80mm(3-1/8)	12	1-1/4	8,000-12,000	RCK-70	61596	<b>61292</b>

Replacement screw #67154.

## SANDING DRUM

For sanding rough work-pieces using a bottom template and rub collar with ball bearing.

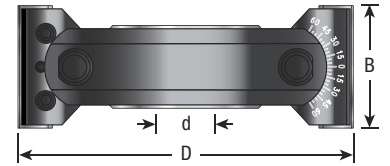
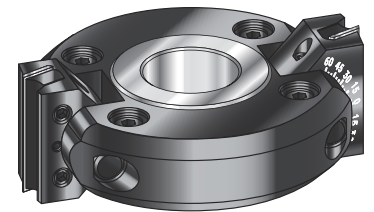


ØD	B	Ød	RPM	Abrasive Replacement	Rub Collar	Tool No.
60mm(2-3/8)	100mm(4)	1-1/4	4,500	AB61293	61596	<b>61293</b>

Replacement abrasive material = AB61293 (9"x3") 80 grit paper.

## ADJUSTABLE CHAMFER

Cutterhead bodies available in hard wearing aluminum or steel, complete with tungsten carbide knives. Suitable for producing chamfer cuts at various angles in softwood, hardwood and man-made boards on a spindle molder. Cutting angle can be adjusted in 7.5° increments by using notched scale. Fine adjustment of 1° is also possible.



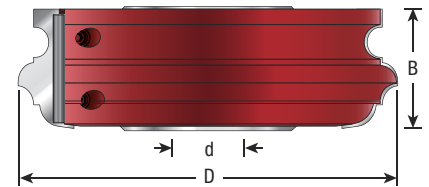
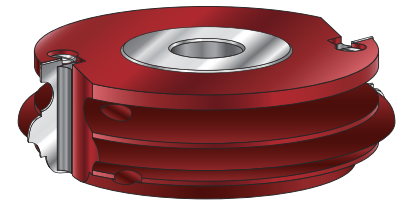
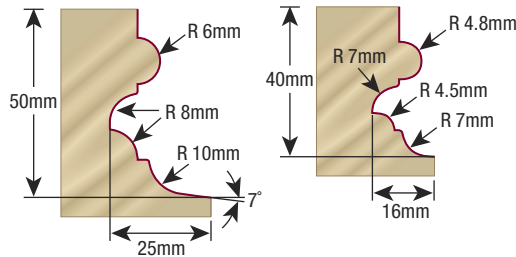
ØD	B	a°	Ød	RPM	Repl. Knife	Tool No.
110mm(4-11/32)	40mm(1-1/2)	-45.0° to +45.0°	1-1/4	7,000-9,000	RCK-40	<b>61303</b>
120mm(4-3/4)	40mm(1-1/2)	-45.0° to +45.0°	1-1/4	6,000-8,500	RCK-40	<b>61304 *</b>
130mm(5-1/8)	50mm(2)	-67.5° to +67.5°	1-1/4	5,000-8,500	ICK-50	<b>61306</b>
150mm(5-7/8)	50mm(2)	-90.0° to +90.0°	1-1/4	5,100-7,400	ICK-50	<b>61307</b>
160mm(6-1/4)	50mm(2)	-90.0° to +90.0°	1-1/4	4,800-6,000	ICK-50	<b>61310 †*</b>
170mm(6-11/16)	60mm(2)	-90.0° to +90.0°	1-1/4	4,500-6,000	ICK-60	<b>61311 †*</b>

\*Aluminum

† Tool has special mechanism to enable fine tuning angle of 1°

## MULTI PROFILE CUTTER

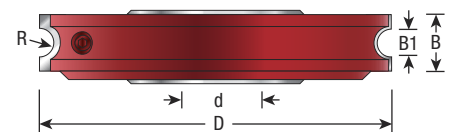
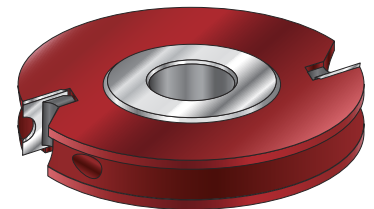
Aluminum alloy heads with special multi-radii replaceable carbide knives. A very versatile cutter for moldings such as beads, corner rounds, classical or a combination of each. Multiple passes and depth settings will give even further combinations. Two different sizes available. Standard bore is 1-1/4". Includes 3mm T-Handle hex key.



ØD	B	d	RPM	Repl. Knife	Tool No.
160mm(6-1/4)	50mm(2)	1-1/4	4,800-8,000	RCK-86	<b>61280</b>

## INSERT BEADING PROFILE CUTTER

Cutterhead body in hard wearing aluminum complete with tungsten carbide knives. Suitable for producing beads of various radii in softwood, hardwood and man-made boards on a spindle molder.

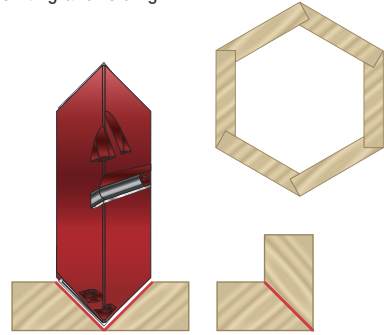
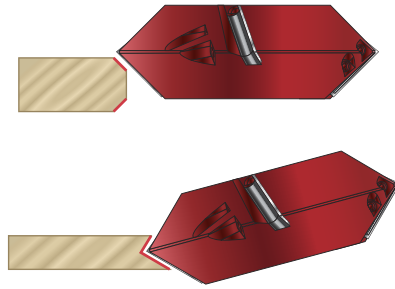
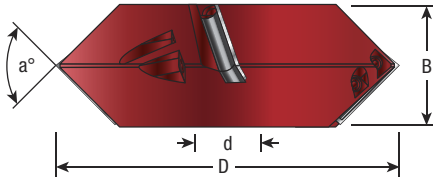
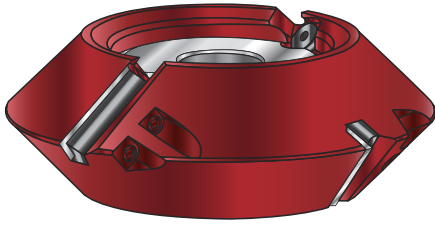


ØD	B	B1	R	Ød	RPM	Repl. Knife	Tool No.
125mm(5)	15mm	6mm	3mm	1-1/4	6,000-10,000	RCK-140	<b>61120</b>
125mm(5)	19/32	1/4	1/8	1-1/4	6,000-10,000	RCK-141	<b>61117 *</b>
125mm(5)	25/32	1/2	1/4	1-1/4	6,000-10,000	RCK-147	<b>61118 *</b>

\*Aluminum with black anodize coated.

## 2+2 DOWN SHEAR FOLDING, JOINTING, RABBETING & CHAMFERING New

Cutter head body in hard wearing aluminum complete with tungsten carbide knives suitable for producing V-Shape, chamfer, jointing and folding.

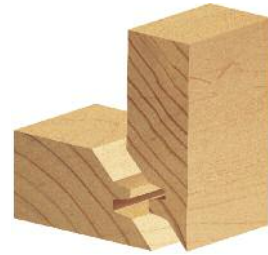
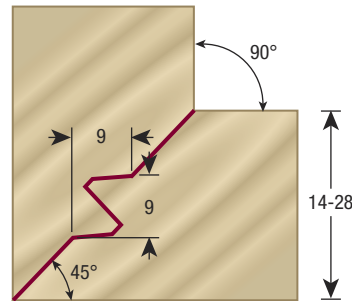
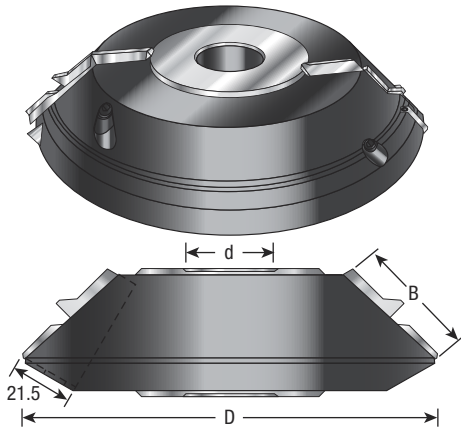


a°	ØD	B	Ød	RPM	Repl. Knife	Tool No.
90°	6-1/4	2-13/64	1-1/4	5,000-8,000	RCK-40	61294

Replacements: M6 screw 67142, Stopper screw #67059

## 45° LOCK MITER

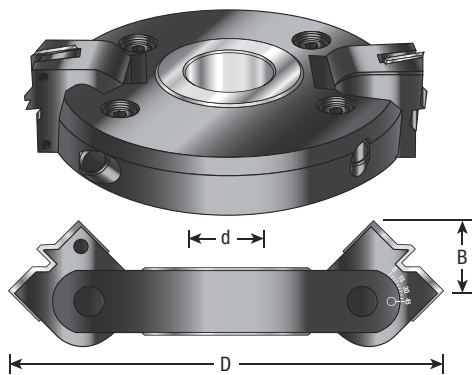
This tool features a solid-steel cutterhead, complete with two tungsten carbide knives. Suitable for producing 45° lock miter joints in softwood, hardwood and man-made boards on a spindle molder. Can also be used for jointing horizontal pieces of timber.



ØD	B	d	RPM	Repl. Knife	Tool No.
170mm(6-11/16)	40mm(1-1/2)	1-1/4	4,500-7,900	RCK-90	61290

## ADJUSTABLE LOCK MITER

This tool cuts the 45° lock miter and other angles as well. It's the ideal cutter for joining polygon shapes, such as hexagons (6-sided) and octagons (8-sided). The cutter has a solid steel body with replaceable carbide knives. An exclusive adjustment system is used that features positive stops at 7.5° increments for precise indexing of angles.

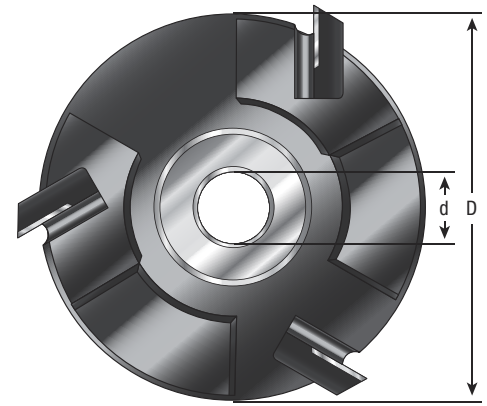
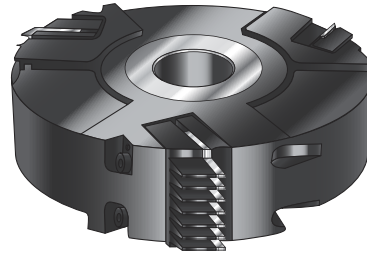
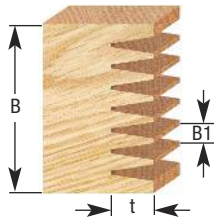


ØD	B	a°	Ød	Max. RPM	Repl. Knife	Tool No.
170mm(6-11/16)	40mm(1-1/2)	-45° to +45	1-1/4	6,000	RCK-90	61298



## FINGER JOINT

This stackable finger-jointing tool is an open-design cutter with no limitation on chip size. As such, it's a high-production, high-performance tool to be used only with an automatic or power feed. The tool features a 3-wing solid-steel cutterhead that takes replaceable carbide knives. Each cutter will cut up to 40mm high and 10mm deep. Stack two or more cutterheads on the spindle to increase the cut height capacity.

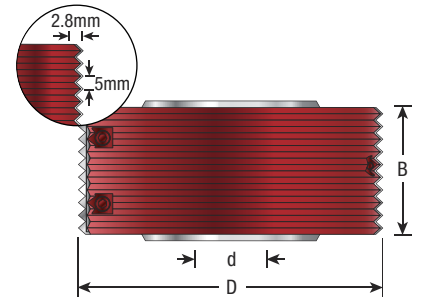
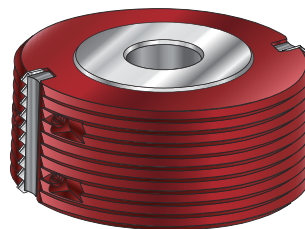


ØD	B	B1	Ød	Max. t	RPM	Repl. Knife	Tool No.
170mm(6-11/16)	40mm(1-1/2)	5mm	1-1/4	10mm(13/32)	7,000	RCK-92	<b>61270</b>

Backing plate for RCK-92 #BP-11.

## 'V' TYPE GLUE JOINT

Cutterhead bodies in hard wearing aluminum, complete with tungsten carbide knives. Suitable for producing glue joints in softwood, hardwood and man-made boards on a spindle molder.

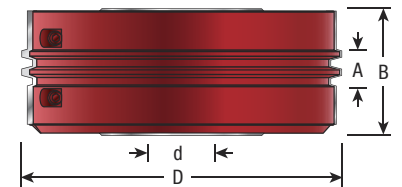
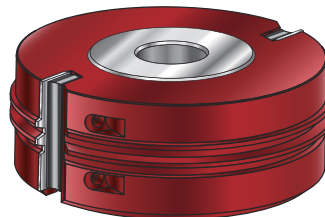


ØD	B	Ød	RPM	Repl. Knife	Tool No.
90mm(3-1/2)	50mm(2)	1-1/4	8,500-12,000	RCK-72	<b>61296</b>
120mm(4-3/4)	50mm(2)	1-1/4	6,100-10,000	RCK-72	<b>61297</b>

## GLUE JOINT

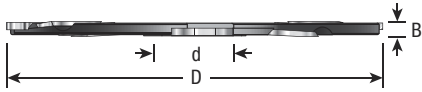
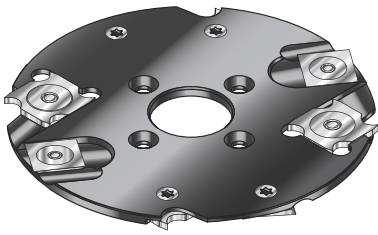
Cutterhead bodies in hard wearing aluminum or steel, complete with tungsten carbide knives. Suitable for producing 'finger style' reversible glue joints in softwood, hardwood and man-made boards on a spindle molder.

Visit [www.amanatool.com](http://www.amanatool.com) for cut profiles.



ØD	B	Profile	A	Ød	RPM	Repl. Knife	Tool No.
120mm(4-3/4)	60mm(2-3/8)	1	7.7mm(5/16)	1-1/4	6,500-9,500	RCK-83	<b>61258</b>
130mm(5-1/8)	60mm(2-3/8)	3	23mm(15/16)	1-1/4	5,400-8,800	RCK-87	<b>61268</b>
140mm(5-1/2)	50mm(2)	2	15.4mm(5/8)	1-1/4	5,400-8,800	RCK-85	<b>61264 *</b>

\* Steel

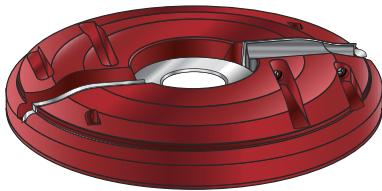


## LAMELLO® BISCUIT JOINT

Hard wearing steel body complete with tungsten carbide knives and scorpers. Suitable for producing grooves and slots in softwood, hardwood and man-made boards for biscuit jointing. For use with most biscuit jointing machines.



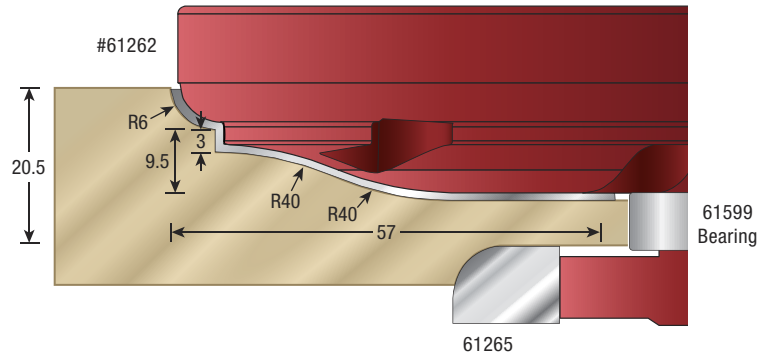
ØD	B	Teeth	Ød	RPM	Repl. Knife		Tool No.
100mm(4)	4mm(5/32)	2+2	22mm	7,700-15,000	RCK-18	RCK-71	<b>61450</b>
100mm(4)	4mm(5/32)	4+4	22mm	7,700-15,000	RCK-18	RCK-71	<b>61452</b>



#61262 with back cutter #61265 and bearing #61599

## RAISED PANEL & BACKCUTTER

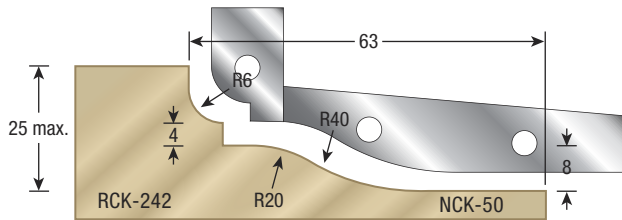
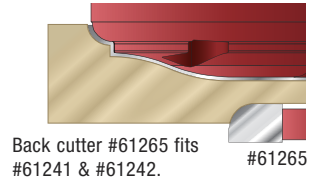
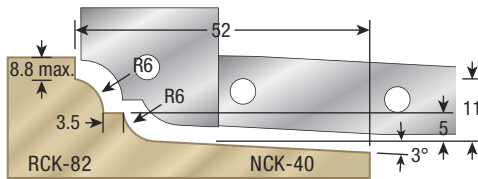
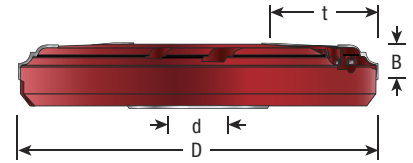
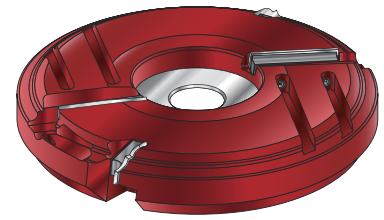
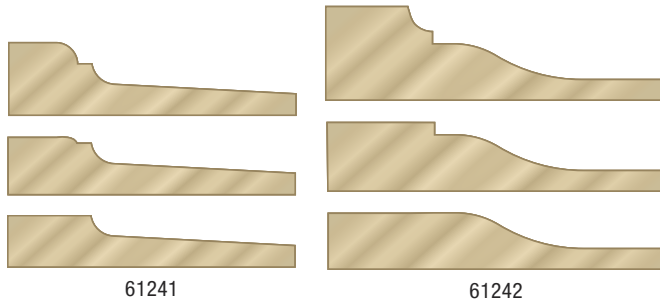
Cutterhead in hard wearing aluminum, complete with tungsten carbide knives. Suitable for producing raised panel profiles in softwood, hardwood and man-made boards on a spindle molder.



Type	ØD	R	B	Ød	Max. t	RPM	Repl. Knife	Rub Collar	Tool No.
Raised Panel	180mm(7-1/16)	—	25mm(1)	1-1/4	57(2-1/4)	4,500-7,500	RCK-78	61599	<b>61262</b>
Back Cutter	104mm(4-3/32)	5/16	18mm(23/32)	1-1/4	—	7,600-10,000	RCK-132	—	<b>61265</b>

## RAISED PANEL

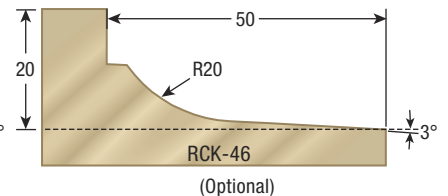
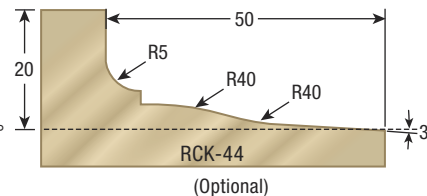
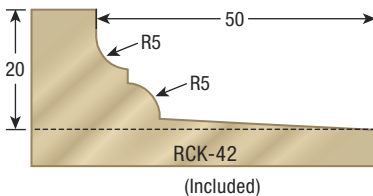
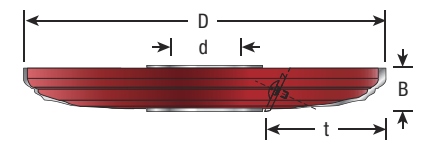
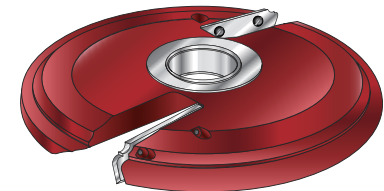
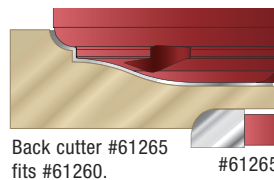
Cutterhead in hard wearing aluminum, complete with two tungsten carbide knives and two scribes. Suitable for producing various raised panel profiles in softwood, hardwood and man-made boards. Raising or lowering the cutterhead on the spindle molder produces different profiles.



Type	ØD	R	B	Ød	Max. t	RPM	Teeth	Repl. Knife	Tool No.
Raised Panel	200mm(7-7/8)	—	20mm(7/8)	1-1/4	52mm(2-1/16)	3,800-6,500	2+2	RCK-82 NCK-40	<b>61241</b>
Raised Panel	200mm(7-7/8)	—	24mm(15/16)	1-1/4	63mm(2-1/2)	3,800-6,500	2+2	RCK-242 NCK-50	<b>61242</b>
Back Cutter	104mm(4-3/32)	5/16	18mm(23/32)	1-1/4	—	7,600-10,000	—	—	<b>61265</b>

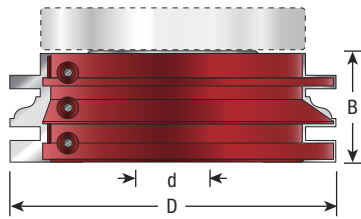
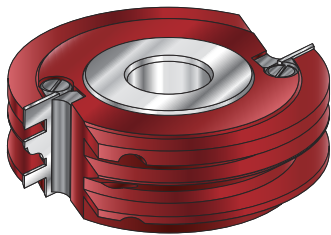
## RAISED PANEL

Three different carbide knife profiles for raised panels are available for this aluminum alloy cutterhead. In the standard package, the traditional profile knives (#RCK-42) are furnished with the cutterhead. Only a regular flat-blade screwdriver is required to change knives. To cut the ogee or cove profiles, order the cutterhead and the desired knives separately.



Type	ØD	R	B	Ød	Max. t	RPM	Teeth	Repl. Knife	Tool No.
Raised Panel	160mm(6-1/4)	—	22mm(7/8)	1-1/4	50mm(2)	4,800-8,000	2+2	RCK-42	<b>61260 *</b>
Back Cutter	104mm(4-3/32)	5/16	18mm(23/32)	1-1/4	—	7,600-10,000	—	RCK-132	<b>61265</b>

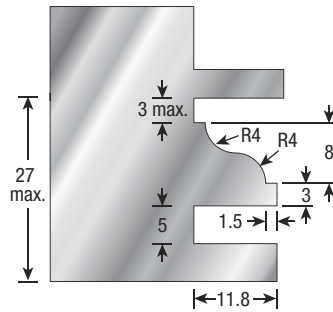
\* RCK-42 included. Replacement knives sold separately.



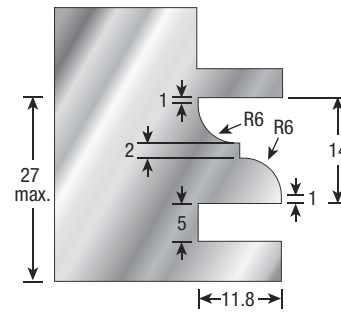
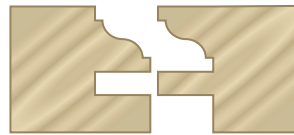
## STILE & RAIL

Cutterhead in hard wearing aluminum alloy with one-sided tungsten carbide knives, utilizing the same knives for both stile and rail cuts by simply adjusting the spindle height of your shaper. Same tool body accepts all four different profiles.

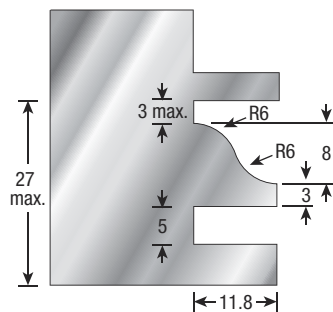
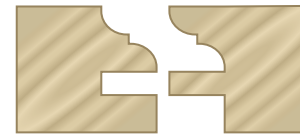
3mm T-handle hex key included. To change profiles order individual knives separately. All patterns are designed for 7/8" through 1" thick materials.



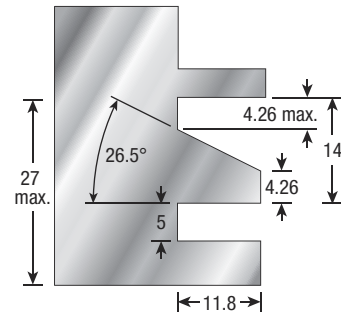
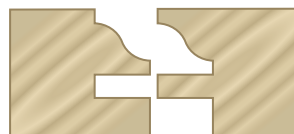
RCK-60



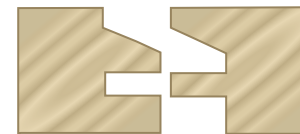
RCK-64



RCK-62



RCK-66

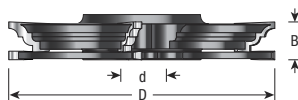
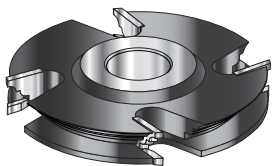


ØD	B	Teeth	Ød	Max. t	RPM	Repl. Knife	Tool No.
120mm(4-3/4)	40mm(1-1/2)	2	1-1/4	11.8mm(15/32)	6,400-8,400	RCK-60	<b>61272</b>
120mm(4-3/4)	40mm(1-1/2)	2	1-1/4	11.8mm(15/32)	6,400-8,400	RCK-64	<b>61273</b>
120mm(4-3/4)	40mm(1-1/2)	2	1-1/4	11.8mm(15/32)	6,400-8,400	RCK-62	<b>61274</b>
120mm(4-3/4)	40mm(1-1/2)	2	1-1/4	11.8mm(15/32)	6,400-8,400	RCK-66	<b>61275</b>

Optional replacement bearing #61609 (98mm x 1-1/4 x 15mm).

## STILE & RAIL (BEAD & COVE)

Two piece steel cutterhead set complete with four tungsten carbide tips. Suitable for producing complete 'stile & rail' joints in softwood, hardwood and man-made boards on a spindle molder. Reversing the cutters on the spindle molder (see illustration) make both the stile and rail. Set comes with necessary washer and ball bearing guide.



ØD	B	Ød	RPM	Repl. Rub Collar	Tool No.
125mm(5)	20mm(7/8)	1-1/4	6,100-10,500	61611	<b>61550</b>

# Adjustable Insert Shaper Cutters

- Create "rattle-free" cabinet doors
- Designed to accommodate undersized plywood flat panels



## ADJUSTABLE TONGUE & GROOVE SET

The perfect fix for undersized plywood flat panel "Mission Style, Arts & Crafts and Shaker" cabinet doors.

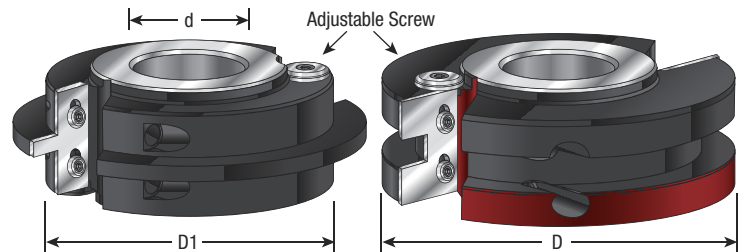
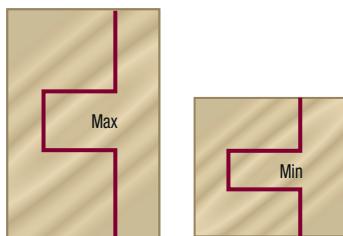
Set includes unique adjustment system and a gauge for precise settings.

- Designed to cut precise grooves to provide undersized plywood veneered panels with a snug, rattle-free fit.
- For 5.5mm undersized 1/4" plywood.
- For 5.9mm oversized 1/4" veneered plywood.
- Adjust the panel groove width 3/16" to 5/16".
- Cut frame stock from 5/8" through 1-3/16" in thickness.



ØD	ØD1	T	C	B	Ød	RPM	Repl. Knife	Rub Collar	Tool No.
4	3-1/4	4.7 to 7.9mm (3/16 to 5/16)	3/8	1-3/16	1-1/4	12,900	RCK-236 RCK-238	C-033	<b>61218</b>

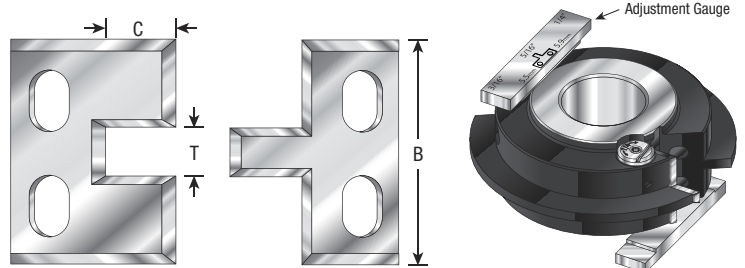
Replacement parts: Knives RCK-236 & RCK-238 consist of one pair each; Screw #67117; Adjusting screw #67058; Locking screw #67059.



Adjust the panel groove width 3/16" to 5/16"

See Pages 182-183 for Instile & Rail System™ Adjustable Tongue & Groove Router Bit Sets.

See Page 338 for Instile & Rail System™ Adjustable Tongue & Groove Shaper Cutters Sets.

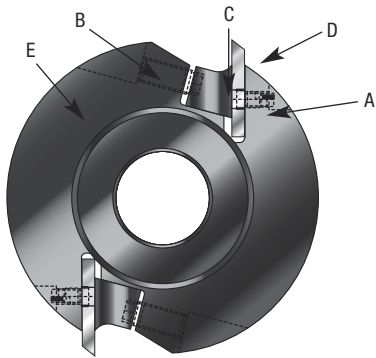
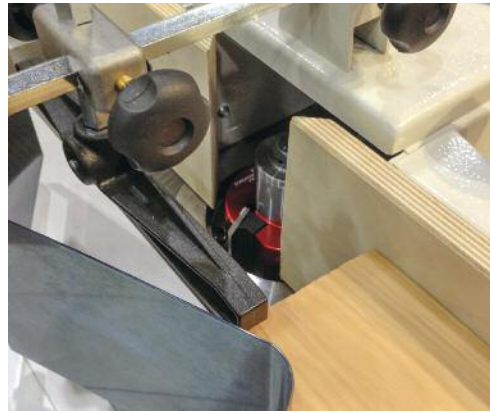


**INDUSTRIAL**

# Profile Pro™

## Insert Shaper Cutter System

- Over 135 interchangeable steel knives
- Steel and aluminum bodies available



### THE PROFILE PRO™ UNIVERSAL SHAPER CUTTER SYSTEM FROM AMANA TOOL®

Designed for professionals, the Profile Pro™ features over **135 different interchangeable steel knife patterns**, ranging from molding to joinery to door sets, which can all be used with a single cutterhead. Blank (unground) knives are also available for custom patterns.

The Profile Pro™ features a unique system of fixed steel pins (A), screws (B) and a wedge block (C) that simultaneously indexes and secures the knives (D) to the head (E). This enables fast, accurate set-ups and eliminates the tedious task of adjusting the knives. This type of system also offers greater safety over other types of cutterheads.

The Profile Pro™ cutterheads are 100mm, 110mm and 120mm black-oxide finished solid steel or 68mm, 88mm, 100mm and 120mm anodized lightweight aluminum alloy. The steel cutterheads are recommended for heavy-duty type shapers with 3 horsepower or more. The aluminum heads, which are 60% less weight than their steel counterparts, are recommended for all spindle shapers, especially smaller machines with 2 horsepower or less.

When selecting the diameter, choose a cutterhead that will properly fit within the table insert rings of your shaper. The diameters shown are for the head only, so you must add from 14mm to 38mm to the diameter to allow for the knives.

(Example: Cutterhead #61100 or #SCS-1000 (88mm) with #64F000 straight knives (add 14mm) = 102mm total outside diameter.)

ALU



Aluminum-Alloy  
Profile Pro™ Shaper Head

STL



Solid Steel  
Profile Pro™ Shaper Head

### 4 POPULAR PROFILES NOW AVAILABLE CARBIDE TIPPED

*See pages 367-368.*



# ALUMINUM PROFILE PRO™ MULTI-SHAPER STARTER SETS

All sets include the basic 68mm or 88mm diameter aluminum alloy cutterhead and seven pairs of interchangeable profile knives. Also included is a custom hardwood storage box, hex key and color poster showing many of the different available knife profiles. Look over the following pages for a full line of aluminum and steel cutterheads in 3/4", 1", 1-1/4" and 30mm bores, a wide array of additional knives, T-bushings for 1/2" and 3/4" diameter arbors, and empty hardwood storage boxes.



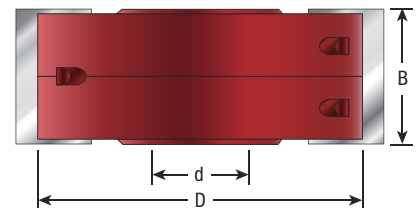
ØD	B	Ød	RPM Ideal/max.	Set No.
68mm(2-11/16)	40mm(1-1/2)	3/4 to 1/2	7,000/9,000	<b>SCS-1106*</b>
88mm(3-1/2)	40mm(1-1/2)	1	7,000/9,000	<b>SCS-1000</b>
88mm(3-1/2)	40mm(1-1/2)	30mm	7,000/9,000	<b>SCS-1002</b>
88mm(3-1/2)	40mm(1-1/2)	1-1/4	7,000/9,000	<b>SCS-1004</b>

ØD	B	Ød	RPM Ideal/max.	Set No.
68mm(2-11/16)	40mm(1-1/2)	3/4 to 1/2	7,000/9,000	<b>SCS-1108*</b>
88mm(3-1/2)	40mm(1-1/2)	30mm	7,000/9,000	<b>SCS-1100</b>
88mm(3-1/2)	40mm(1-1/2)	1	7,000/9,000	<b>SCS-1102</b>
88mm(3-1/2)	40mm(1-1/2)	1-1/4	7,000/9,000	<b>SCS-1104</b>

\* Includes 2 bushings (#BU-561) 3/4" to 1/2"

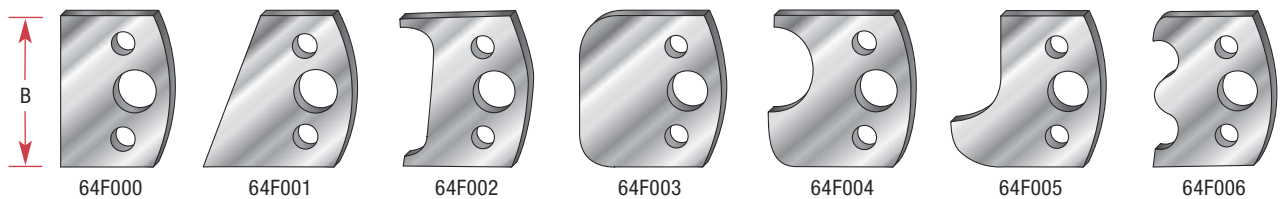
### Replacement Parts:

Description	Size	Qty. Required	Tool No.
Wedge Blocks	For 40mm Knives	2	<b>WB-40</b>
Allen Socket Knife Screws	8x16mm	2	<b>67144</b>
'L' Shaped Allen Key	4mm	1	<b>5010</b>
Wood Storage Box	For 6 Pair Of Knives	1	<b>62282</b>
Bushing	3/4" to 1/2"	2	<b>BU-561</b>
Knife Set Pins	—	4	<b>67153</b>

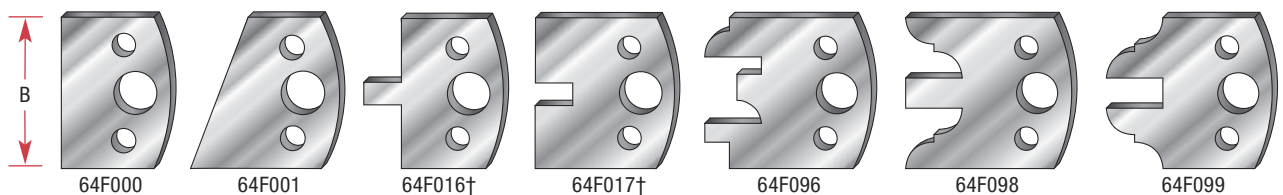


The following 40mm knives are included in each set:

SCS-1000/1002/1004/1106

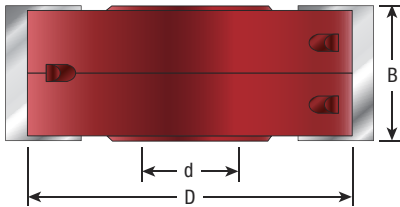


SCS-1100/1102/1104/1108



† Part #'s 64F016 and 64F017 available carbide tipped, see page 364 for more information.

Knives shown at approx. 50% of actual size. See pages 364–365 for larger selection of knives.



## PROFILE PRO™ SHAPER CUTTERS ALUMINUM CUTTERHEADS

(For 40mm Knife System)

Profile Pro™ red anodized aluminum alloy cutterheads in 68mm, 88mm, 100mm or 120mm diameters.



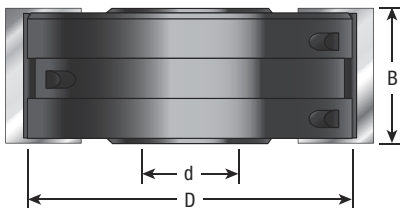
ØD	B	Ød	RPM Ideal/max.	Set No.
68mm	40mm(1-1/2)	3/4	7,000/9,000	<b>61068*</b>
88mm(3-1/2)	40mm(1-1/2)	30mm	7,000/9,000	<b>61100</b>
88mm(3-1/2)	40mm(1-1/2)	1	7,000/9,000	<b>61102</b>
88mm(3-1/2)	40mm(1-1/2)	1-1/4	7,000/9,000	<b>61104</b>
100mm(4)	40mm(1-1/2)	1	5,800/9,000	<b>61200</b>
100mm(4)	40mm(1-1/2)	30mm	5,800/9,000	<b>61204</b>
100mm(4)	40mm(1-1/2)	1-1/4	5,800/9,000	<b>61208</b>
120mm(4-3/4)	40mm(1-1/2)	1	5,100/7,900	<b>61228</b>
120mm(4-3/4)	40mm(1-1/2)	30mm	5,100/7,900	<b>61232</b>
120mm(4-3/4)	40mm(1-1/2)	1-1/4	5,100/7,900	<b>61236</b>

See page 367 for reducing 'T' bushings.

\* Includes 2 bushings (BU-561) 3/4" to 1/2". Part #'s beginning with "CT" and marked in red are carbide tipped and will not fit in the #61068 cutterhead.

ØD	B	Ød	RPM Ideal/max.	Set No.
120mm	50mm	1-1/4	4,500/6,600	<b>61237+</b>

+ **Warning!**: Fits only blank knives 5.5mm thick #65RM127 and #HSSRM127 found on page 365.



## STEEL CUTTERHEADS

(For 40mm Knife System)

Profile Pro™ black oxide solid steel cutterheads in 100mm or 120mm diameters.

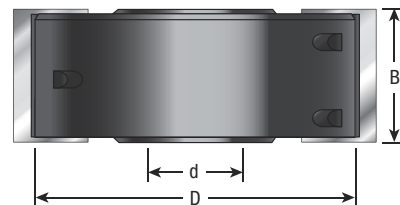


ØD	B	Ød	RPM Ideal/max.	Set No.
100mm(4)	40mm(1-1/2)	1	5,800/9,000	<b>61212</b>
100mm(4)	40mm(1-1/2)	30mm	5,800/9,000	<b>61216</b>
100mm(4)	40mm(1-1/2)	1-1/4	5,800/9,000	<b>61220</b>
120mm(4-3/4)	40mm(1-1/2)	30mm	5,100/7,900	<b>61244</b>
120mm(4-3/4)	40mm(1-1/2)	1-1/4	5,100/7,900	<b>61248</b>

### Replacement Parts:

Description	Size	Qty. Required	Tool No.
Allen Socket Screws	8x16mm	2	<b>67144</b>
Wedge Blocks	For 40mm Knives	2	<b>WB-40</b>
'L' Shaped Allen Key	4mm	1	<b>5010</b>
Knife Set Pins		4	<b>67153</b>

See page 367 for reducing 'T' bushings.



## STEEL CUTTERHEADS

(For 60mm Knife System)

Profile Pro™ black oxide solid steel cutterhead.



ØD	B	Ød	RPM Ideal/max.	Set No.
110mm(4)	60mm(2-3/8)	1-1/4	4,200/6,000	<b>61249+</b>

+ **Warning!**: Fits only blank knives 4mm thick #66RM600 found on page 365.

Profile knives may be found on page 364-365.



# 40MM STEEL KNIVES

4 Popular Profiles Now Available Carbide Tipped\*



More Profiles Available On Our Website  
[www.amanatool.com](http://www.amanatool.com)

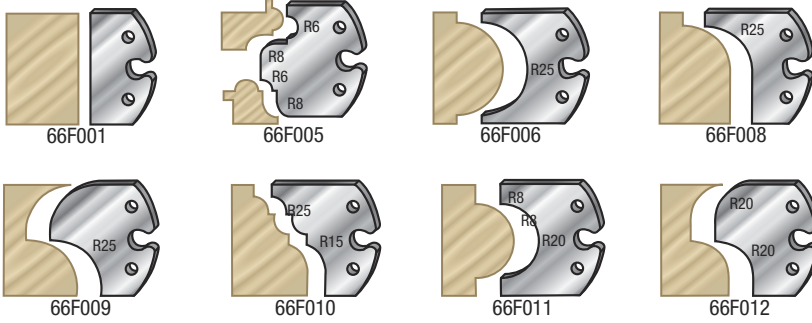
\* Part #'s beginning with "CT" and marked in red are carbide tipped.

**Note:** Each part # consists of one pair. See page 370 for blank (unground) knives.

Specifications shown ('R8', 'R10' etc.) are in millimeters.

## +60MM STEEL KNIVES

(Limiters Included)



**Note:** Each part # consists of one pair. See below for blank (unground) knives.

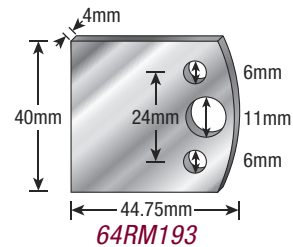
Specifications shown ('R8', 'R10' etc.) are in millimeters.

## BLANK (UNGROUND) KNIVES

For Custom Grinding

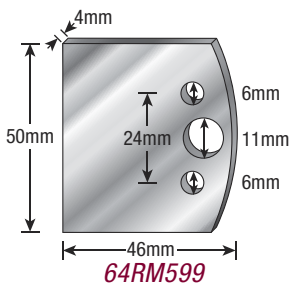
\* **Warning!:** Fits only on special cutterhead #61237, page 368.

\*\* Fits only on special cutter head #61249, page 368.



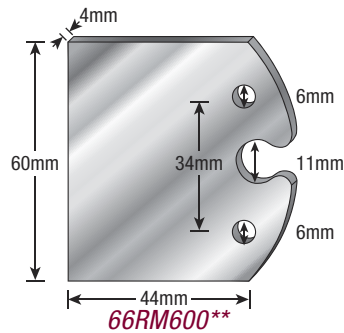
**64RM193**

18mm Maximum Profile Depth



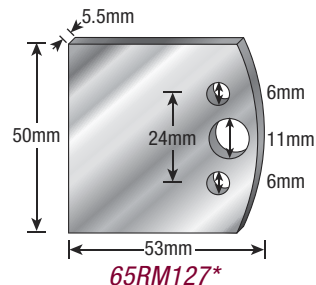
**64RM599**

20mm Maximum Profile Depth



**66RM600\*\***

29mm Maximum Profile Depth



**65RM127\***

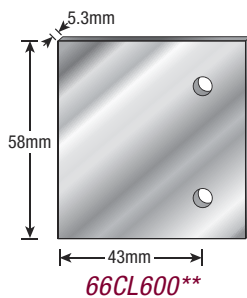
**\*HSSRM127 (High Speed Steel)**

27mm Maximum Profile Depth

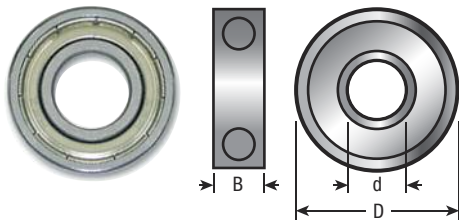
## CHIP LIMITERS

For Blank (Unground) Knives

Fits only on blank (unground) knives #66RM600.



**66CL600\*\***



## BALL BEARING RUB COLLARS

*For Shaper Cutters*

*For 1/2," 3/4" & 1-1/4" Diameter Spindles*

Designed for template shaping such as arched or cathedral doors, etc. Features a ball bearing center with a steel sleeve and is available with either 1/2," 3/4" and 1-1/4" inside diameter. Please see page 372 for additional rub collars.

Use for Amana Tool® No.	Ød	ØD	B	Tool No.
SC602, SC604, SC606	1/2	1.250 (1-1/4)	5/32	<b>C-002</b>
993	1/2	1.500 (1-1/2)	5/16	<b>47806 *</b>
939, SC624, SC642	3/4	1.457	9.5mm	<b>C-043</b>
977	3/4	1.500 (1-1/2)	9.5mm	<b>C-044</b>
905, 950, 906, 929, 930, SC626, SC636, SC638, SC650, SC652, SC654, SC656, SC658	3/4	1.625 (1-5/8)	7/16	<b>C-005</b>
SC586, SC587, SC588, SC589	3/4	42mm (1-21/32)	9mm	<b>47757</b>
957	3/4	1.687 (1-11/16)	7/16	<b>47810 *</b>
900, 901, 968, 969, 980, 998, 991, SC410, SC412, SC414, SC416, SC630, SC640, SC646	3/4	1.750 (1-3/4)	7/16	<b>C-006</b>
965, SC442, SC444, SC446, SC582, SC592	3/4	1.811	7/16	<b>C-007</b>
921, 922, 927, 928, 932, 938, 940, 945, 952, 958, 994, SC554, SC558, SC590, SC634, SC648	3/4	1.874 (1-7/8)	7/16	<b>C-008</b>
964, SC400, SC402, SC404, SC406, SC408	3/4	1.937 (1-15/16)	7/16	<b>C-004</b>
SC440, SC460	3/4	1.964	7/16	<b>C-009</b>
902, 903, 904, 951, 966, SC442, SC644, SC446	3/4	2.000	7/16	<b>C-010</b>
922	3/4	2.063	7/16	<b>C-022</b>
SC585	3/4	2.031 (2-1/32)	7/16	<b>C-039</b>
992	3/4	2.106	7/16	<b>C-023</b>
905, 925, 926, 959, 999, SC618, SC640	3/4	2.125 (2-1/8)	7/16	<b>C-011</b>
975, 976	3/4	2.153	7/16	<b>C-024</b>
SC444	3/4	2.216	7/16	<b>C-012</b>
972, 974, SC628	3/4	2.250 (2-1/4)	7/16	<b>C-025</b>
	3/4	2.272	7/16	<b>C-013</b>
933, SC616, SC441	3/4	2.295	7/16	<b>C-014</b>
911	3/4	2.311	7/16	<b>C-026</b>
960, 961, 971, 973, SC620, SC622	3/4	2.375 (2-3/8)	7/16	<b>C-015</b>
962	3/4	2.425	7/16	<b>C-027</b>
960, 961	3/4	2.468	7/16	<b>C-028</b>
940, 945, 986-VC, 985-VC, 994	3/4	2.500 (2-1/2)	7/16	<b>C-016</b>
934, 935, 936, 937	3/4	2.555	7/16	<b>C-029</b>
984-VC, 987-VC, SC430, SC432	3/4	2.625 (2-5/8)	7/16	<b>47822 *</b>
967	3/4	2.733	7/16	<b>C-030</b>
989	1-1/4	1.850	9mm	<b>C-045</b>
SC532, SC534, SC536	1-1/4	2.000	9mm	<b>C-050</b>
SC680, SC682	1-1/4	2.165	1/2	<b>C-051</b>
SC593	1-1/4	2.312 (2-5/16)	1/2	<b>C-040</b>
924	1-1/4	2.375 (2-3/8)	1/2	<b>C-041</b>
931, 984, 985, 985-LH, 986, 987, A-30-114, A-30-116, A-30-118, A-30-120,	1-1/4	2.500 (2-1/2)	5/8	<b>C-017</b>
SC420, SC422, SC426, SC500, SC502, SC504, SC506, SC508, SC509, SC510, SC511, SC512,				
SC514, SC516, SC520, SC522, SC524, SC526, SC528, SC530, SC556, SC559, SC580, SC617				
SC584, SC594	1-1/4	2.531	1/2	<b>C-018</b>
SC424, SC540, SC542, SC544, SC546, SC548, SC550, SC560, SC562, SC564	1-1/4	2.688	1/2	<b>C-019</b>
SC542, SC546, SC548	1-1/4	2.874 (2-7/8)	1/2	<b>C-020</b>
A-28-108, A-29-108, A-30-110	1-1/4	3.000	1/2	<b>C-032</b>
A-28-106, A-29-106, A-30-108	1-1/4	3.250 (3-1/4)	1/2	<b>C-033</b>
A-28-104, A-29-104, A-30-104	1-1/4	3.500 (3-1/2)	1/2	<b>C-035</b>
A-32-100, A-32-200, A-32-400	1-1/4	3.555	1/2	<b>C-036</b>
A-28-102, A-29-102, A-30-102	1-1/4	3.625 (3-5/8)	1/2	<b>C-037</b>
A-28-100, A-29-100, A-30-100	1-1/4	3.750 (3-3/4)	1/2	<b>C-038</b>

\*Includes 2 steel shims .007" (#55358); Rub collar shim (#55358)

## BALL BEARING RUB COLLARS

For 3/4", 1", 1-1/4" & 30mm Spindle Shapers

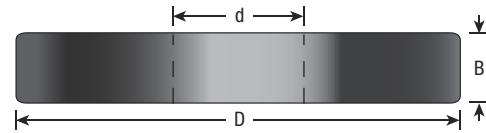
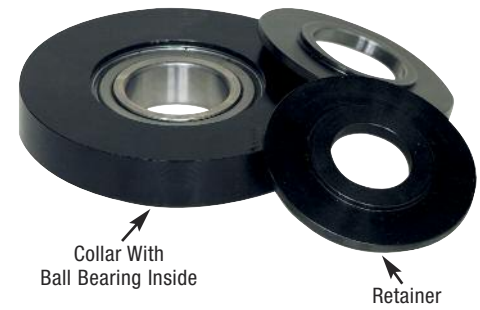
Designed for template shaping such as arched or cathedral doors, etc. Features a steel ball bearing center and interchangeable, lightweight aluminum rub collar sleeves. To order, specify rub collar (example: #61600, 75mm), and then order the correct size bearing to fit your spindle. The bearing includes a special steel retaining collar that properly secures the assembly to your spindle (3/4", 1", 1-1/4" or 30mm).

ØD	B	Order No. (Rub collar only)
75mm	16mm	61600
80mm	16mm	61602
85mm	16mm	61604
90mm	16mm	61606
95mm	16mm	61608
100mm	16mm	61610
4	16mm	61615
103mm	15mm	61611
105mm	16mm	61612
110mm	16mm	61614
115mm	16mm	61616
120mm	16mm	61618
125mm	16mm	61620
130mm	16mm	61622
140mm	16mm	61624
150mm	16mm	61626
160mm	16mm	61628
170mm	16mm	61630

Ød	Order No. (Ball bearing w/ retainer)
1-1/4	61650
1	61652
30mm	61654
3/4	61656

Ød	Order No. (retainer only)
1-1/4	61670
1	61672
30mm	61674
3/4	61676

**Note:** Bearing only  
(1-1/4 x 2-1/2) order  
#61660 (no retainer).



## DOUBLE 'T' REDUCTION BUSHINGS

Ød	ØD	B	Tool No.
1/2	3/4	1-5/16	BU-918
3/4	1	1-5/16	BU-916
3/4	1-1/4	1-5/16	BU-914
1	1-1/4	1-5/16	BU-912

## LONG 'T' REDUCTION BUSHINGS

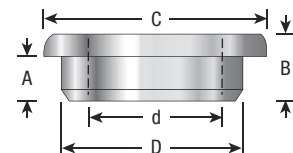
Ød	ØD	B	Tool No.
3/4	1	1-5/16	BU-926
3/4	1-1/4	1-5/16	BU-924
1	1-1/4	1-5/16	BU-922

## SHAPER CUTTER 'T' REDUCTION BUSHINGS

(With Flange), 2 Required Per Cutter

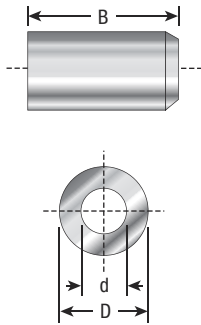
Each item number consists of one of each.

Ød	ØD	A	B	C	Tool No.
1/2	3/4	5mm	9mm	55mm	BU-561
1/2	3/4	1/4	11/32	1	BU-550
1/2	1	5mm	9mm	55mm	BU-565
3/4	1	5mm	9mm	55mm	BU-564
3/4	30mm	5mm	9mm	55mm	BU-562
3/4	1-1/4	5mm	9mm	55mm	BU-570
3/4	1-1/4	1/4	15/32	1-3/4	BU-600
20mm	1-1/4	11/64	1/4	1-3/4	BU-724
1	1-1/4	3/16	9/32	1-3/4	BU-700
1	1-1/4	5mm	9mm	55mm	BU-568
1	1-1/4	1/4	11/32	1-5/8	BU-725 <small>New</small>
1	1-1/4	1/4	11/32	1-3/4	BU-720
1	1-1/4	11/32	1/2	1-3/4	BU-750
1	30mm	5mm	9mm	55mm	BU-560
1-1/8	1-1/4	13/64	1/4	1-3/4	BU-722
30mm	1-1/4	5mm	9mm	55mm	BU-566



# HIGH PRECISION INDUSTRIAL STEEL SPACERS

(Sleeve Bushings) For Shaper Cutters



## For 1/2" Spindles

Ød	ØD	B	Tool No.
1/2	3/4	.437 (7/16)	<b>BU-902</b>
1/2	3/4	.500 (1/2)	<b>BU-900</b>
1/2	3/4	.750 (3/4)	<b>BU-910</b>
1/2	3/4	1.620 (1-1/16)	<b>BU-920</b>
1/2	3/4	1.250 (1-1/8)	<b>BU-930</b>
1/2	1	.250 (1/4)	<b>67220</b>
1/2	1	.375 (3/8)	<b>67221</b>
1/2	1	.500 (1/2)	<b>67222</b>
1/2	1	.750 (3/4)	<b>67223</b>
1/2	1	1	<b>67224</b>

## For 3/4" Spindles

Ød	ØD	B	Tool No.
3/4	1	.250 (1/4)	<b>67230</b>
3/4	1	.375 (3/8)	<b>67243</b>
3/4	1	.437 (7/16)	<b>BU-904</b>
3/4	1-1/4	.250 (1/4)	<b>67225</b>
3/4	1-1/4	.375 (3/8)	<b>67226</b>
3/4	1-1/4	.437 (7/16)	<b>BU-906</b>
3/4	1-1/4	.500 (1/2)	<b>67227</b>
3/4	1-1/4	.750 (3/4)	<b>67228</b>
3/4	1-1/4	1	<b>67229</b>
3/4	1-1/2	.250 (1/4)	<b>67241</b>
3/4	1-5/8	.250 (1/4)	<b>67242</b>
3/4	1-7/8	.250 (1/4)	<b>919</b>

## For 1" Spindles

Ød	ØD	B	Tool No.
1	1-1/4	.437 (7/16)	<b>BU-908</b>
1	1-1/2	.250 (1/4)	<b>67231</b>
1	1-1/2	.375 (3/8)	<b>67232</b>
1	1-1/2	.500 (1/2)	<b>67233</b>
1	1-1/2	.750 (3/4)	<b>67234</b>
1	1-1/2	1	<b>67235</b>

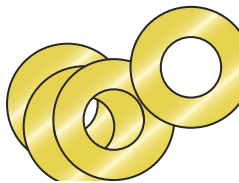
## For 30mm Spindles

Ød	ØD	B	Tool No.
30mm	1-1/4	.250 (1/4)	<b>67244</b>
30mm	1-1/4	.375 (3/8)	<b>67245</b>
30mm	1-1/4	.500 (1/2)	<b>67246</b>
30mm	1-1/4	.750 (3/4)	<b>67247</b>
30mm	1-1/4	1	<b>67248</b>



## For 1-1/4" Spindles

Ød	ØD	B	Tool No.
1-1/4	1-3/4	.250 (1/4)	<b>67236</b>
1-1/4	1-3/4	.375 (3/8)	<b>67237</b>
1-1/4	1-3/4	.500 (1/2)	<b>67238</b>
1-1/4	1-3/4	.750 (3/4)	<b>67239</b>
1-1/4	1-3/4	1	<b>67240</b>



## 8 PC. SHIM SETS FOR SHAPER CUTTERS

Application: General purpose arbor steel shims used on assembly type tools that require cutter adjustment. Particularly useful after tool re-sharpening.



Diameters: 'd' Inside x 'D' Outside	8 Pc Set Includes: 'B' Shim Thickness	Qty.	Tool No.
3/4 x 1-1/4	0.1mm (.0040)	1pc.	<b>67250</b>
	0.2mm (.0078)	2pc.	
	0.5mm (.0197)	1pc.	
	1.0mm (.0393)	4pc.	
1-1/4 x 1-3/4	0.1mm (.0040)	1pc.	<b>67252</b>
	0.2mm (.0078)	2pc.	
	0.5mm (.0197)	1pc.	
	1.0mm (.0393)	4pc.	
1-1/4 x 1-31/32	0.1mm (.0040)	2pc.	<b>67208</b>
	0.2mm (.0078)	2pc.	
	0.5mm (.0197)	1pc.	
	1.0mm (.0393)	1pc.	
	2.0mm (.0788)	1pc.	
	3.0mm (.1182)	1pc.	

# Safety Guidelines for shaper cutters



1. Always make sure the machine is disconnected from the power source while going through these important steps.
2. Always refer to your machine owner's manual prior to using your shaper. Learn the machines' applications and limitations as well as the potential hazards.
3. Always wear eye and hearing protection. Keep clothing clear of cutting area.
4. Make certain that the stock is not warped or twisted and is free of any knots, nails, screws, staples, grit or any other foreign object.
5. Always examine the cutters for dull, worn or damaged knives. Never use a dull, worn or damaged tool.
6. When using insert tooling, be sure all knives are installed correctly and securely tightened. Never make adjustments to cutters or knives while shaper is plugged in.
7. Check the direction of the cutter rotation. The sharp leading edge of the knife should be the first to touch the material.
8. Always be sure the spindle nut is securely tightened.
9. Never feed the material in the same direction that the cutterhead rotates.
10. Make sure that both the in feed and out-feed fences are in alignment with each other.
11. Carefully rotate the spindle by hand to be sure that your cutters clear the fence and guards. Never make adjustments to shaper while cutters are turning or the power is on.
12. Always use the safety guards supplied with your machinery. Never remove any safety guards or safety devices. Never make any cuts freehand!
13. Allow at least a minimum safety distance of 4 inches between the cutters and your hands when cutting material. Always use push blocks or sticks when working with small or narrow pieces.
14. Never stand behind the material being shaped.
15. Avoid shaping stock less than 10 inches in length.
16. Hold down the material firmly and feed it into the cutters with a constant and steady feed rate. Do not over-reach.
17. Always feed the material against the cutters. Never remove any stock until the entire length has passed completely through the cutters.
18. Failure to follow safety instructions and warnings could result in serious bodily injury or death.