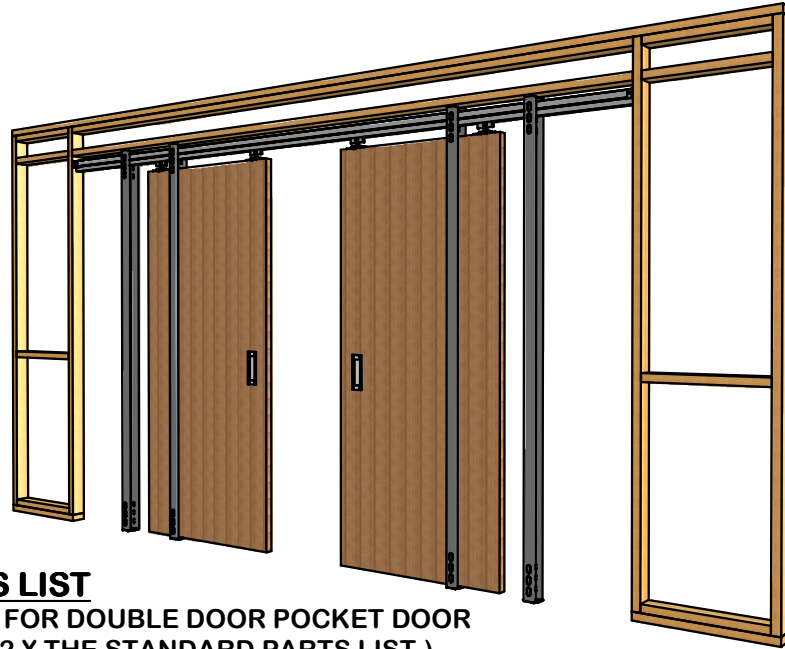


# CROWDERFRAME 'DOUBLE DOOR' MODIFICATION INSTRUCTION SHEET

FOR DOORS 24" TO 48" WIDE



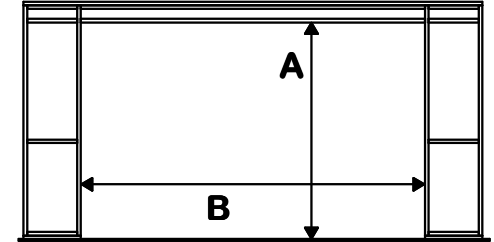
## CHART A (DOUBLE DOORS)

24" TO 48" WIDE DOORS

ROUGH OPENING SIZE

ROUGH OPENING HEIGHT (A) FOR DOORS UP TO 7' MUST BE AT LEAST 90-1/2" (2399 mm).  
ROUGH OPENING HEIGHT (A) FOR DOORS UP TO 8' MUST BE AT LEAST 102-1/2" (2604 mm).

DOOR WIDTH	ROUGH OPENING WIDTH (B)
2@ 2'-0" (610 mm)	95-1/4" (2419 mm)
2@ 2'-2" (661 mm)	103-1/4" (2623 mm)
2@ 2'-4" (711 mm)	111-1/4" (2826 mm)
2@ 2'-6" (762 mm)	119-1/4" (3029 mm)
2@ 2'-8" (813 mm)	127-1/4" (3232 mm)
2@ 2'-10" (864 mm)	135-1/4" (3436 mm)
2@ 3'-0" (915 mm)	143-1/4" (3639 mm)
2@ 3'-2" (965 mm)	151-1/4" (3842 mm)
2@ 3'-4" (1016 mm)	159-1/4" (4045 mm)
2@ 3'-6" (1067 mm)	167-1/4" (4248 mm)
2@ 3'-8" (1118 mm)	175-1/4" (4452 mm)
2@ 3'-10" (1169 mm)	183-1/4" (4655 mm)
2@ 4'-0" (1219 mm)	191-1/4" (4858 mm)



## PARTS LIST

(PARTS FOR DOUBLE DOOR POCKET DOOR KITS IS 2 X THE STANDARD PARTS LIST.)

TO DETERMINE ROUGH OPENING WIDTH FOR NON-STANDARD DOORS, MULTIPLY DOOR WIDTH BY FOUR (4) AND SUBTRACT 1-1/8".

### STEP 1

ALUMINUM HEADER WILL BE SUPPLIED IN THE CORRECT SIZE. STANDARD LENGTH FOR TWO 3'-0" DOORS IS 142-3/4". TO DETERMINE HEADER LENGTH TAKE 4 X THE DOOR WIDTH AND SUBTRACT 1-1/4".

### STEPS 2-6

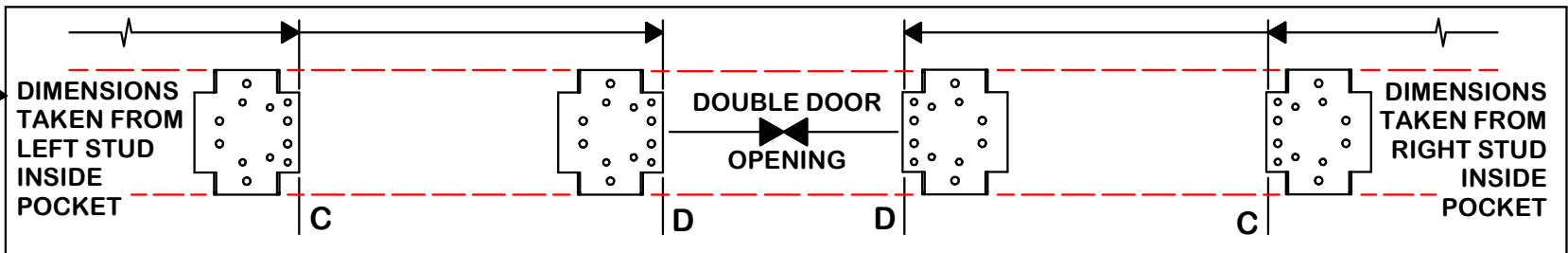
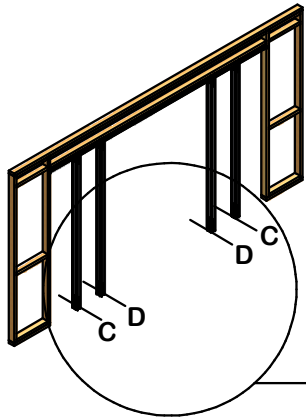
FOLLOW STEPS FROM STANDARD POCKET DOOR KIT INSTRUCTIONS. (FOR STEP 4, PLACE 4 HANGERS INTO HEADER)

### STEPS 7-8

FOLLOW STEPS IN THE STANDARD INSTRUCTION SHEET FOR DOORS 24" TO 36". REFER TO STEPS ON 'EXTRA WIDTH' SHEET FOR DOORS 38"-48".

### STEPS 9-20

FOLLOW STEPS IN THE STANDARD POCKET DOOR KIT INSTRUCTIONS.



### K.N. CROWDER MFG. INC.

1220 BURLOAK DRIVE  
BURLINGTON, ONTARIO, CANADA, L7L 6B3  
TELEPHONE: 905-315-9788 - FAX: 905-315-8090  
TOLL FREE FAX: 1-800-567-0123

### K.N. CROWDER INC.

210 EIGHTH STREET SOUTH  
LEWISTON, NEW YORK, U.S.A. 14092  
TOLL FREE TELEPHONE: 1-866-999-1KNC (1562)  
TOLL FREE FAX: 1-800-567-0123

WEBSITE: [www.kncrowder.com](http://www.kncrowder.com) --- E-MAIL: [customerservice@kncrowder.com](mailto:customerservice@kncrowder.com)

