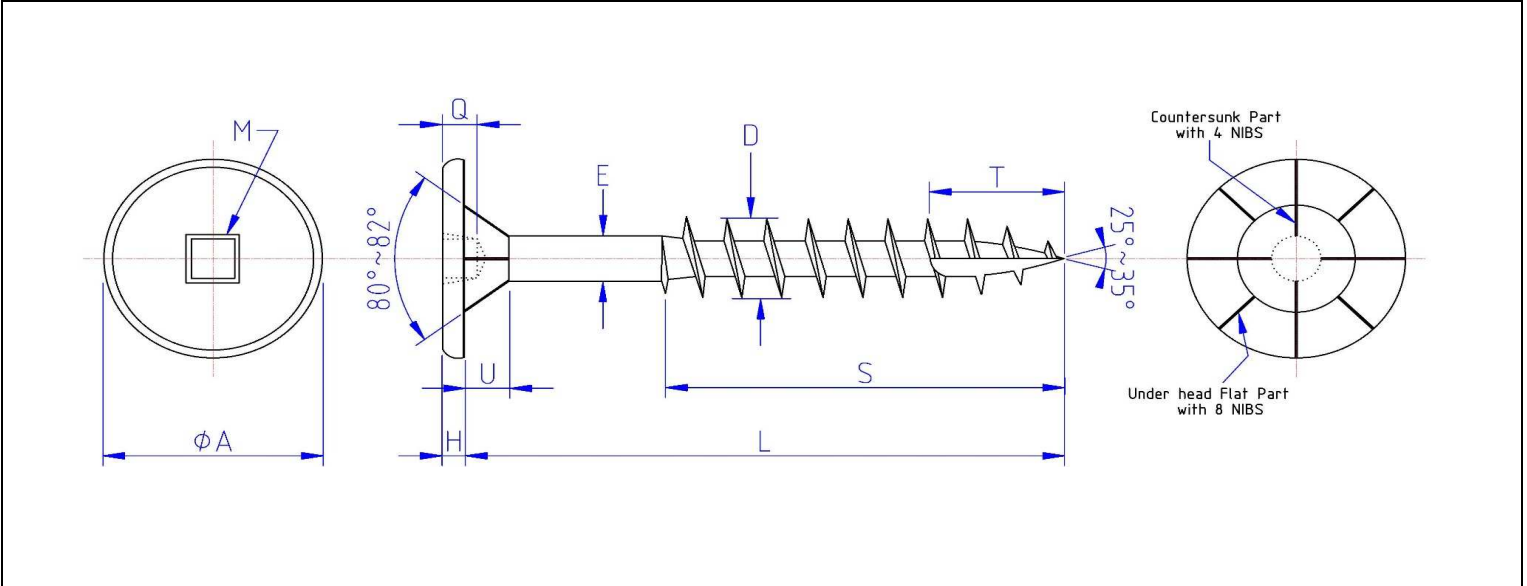




Brand	Root
	FTKNC17W...



unit: INCH

L LENGTH TOLERANCE	> 5/8" to ≤ 1-1/2"	+ 0	- 0.05
	> 1-1/2" to ≤ 2-3/4"	+ 0	- 0.06
	> 2-3/4" to 5"	+ 0	- 0.09

S THREAD LENGTH	2/3 Thread
------------------------------	-------------------

SCREW SIZE	M PUNCH		Q DRIVE DEPTH	A HEAD DIAM.	H HEAD HEIGHT	U NECK HEIGHT	E BODY DIAM.	D THREAD DIAM.	T POINT LENGTH	THREAD PER INCH	TORK INCH/ POUND
# 10	# 2	Min	0.060	Ref.	Ref.	Ref.	0.137	0.194	0.425	8	56
		Max	0.075	0.562	0.080	0.100	0.140	0.200	0.500		

Flat Top head with Nibs, Square recess, Coarse Thread, Type-17, Zinc Plated Head Painted WHITE

Root= Flat Top socKet Nibs Coarse type-17 White
 * Lid color for Pail is RED (PMS485-C)

Bulk Label Description:

- English:** FLAT TOP HEAD WITH NIBS, SQUARE, COARSE THREAD, TYPE-17, ZINC, HEAD PAINTED WHITE
- French:** TÊTE TOP PLATE AVEC NIBS, CARRÉ, GROS FILET, TYPE-17, ZINC, TÊTE PEINTURÉE BLANCHE
- Spanish:** CABEZA PLANA AUTORROSCANTE, CUADRADO, ROSCA GRUESA, TIPO 17, ZINC, BLANCO

Date : 28 février 2019

Done by : P.B.