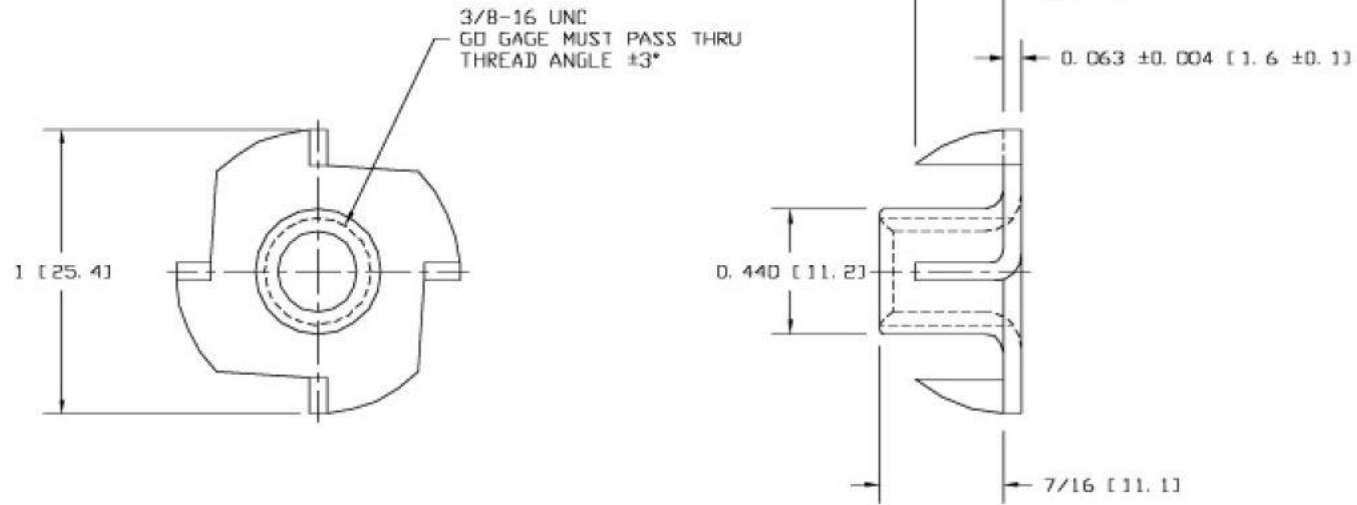




Uncontrolled Document
For Reference Only



NOTES:
FLANGE RADIUS = MATERIAL THICKNESS ± 0.020 [0.5]
MAXIMUM ASSEMBLY TORQUE = 200 IN-LBS [228 CM-KG]
DIMENSIONED IN INCHES [mm]

REVISIONS

TOLERANCES UNLESS NOTED

DECIMALS: ± 0.015 [0.4]

FRACTIONS: $\pm 1/32$ [0.8]

DRAWN BY: JP

DATE: 10-11-94

FILE: 38-584

MAT'L: 1006 - 1008 CRS

TITLE:

4 PRONG T-NUT
381674T