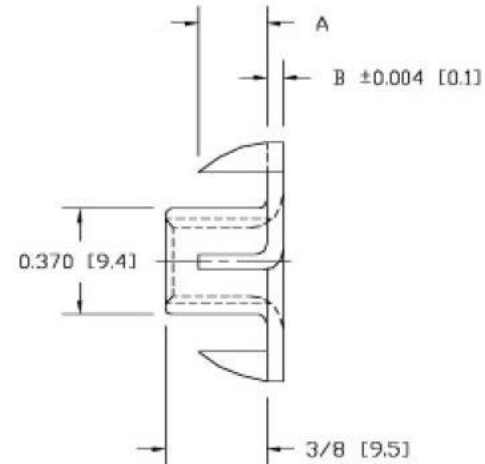
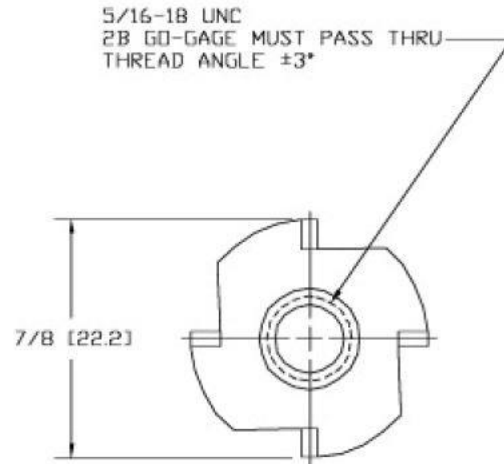


Uncontrolled Document
For Reference Only



	A	B	P/N ①
VENDOR □	9/32 [7.1]	0.055 [1.4]	561864T
VENDOR N	1/4 [6.4]	0.059 [1.5]	561864TN

NOTES:
 FLANGE RADIUS = MATERIAL THICKNESS ± 0.020 [0.5]
 MAXIMUM TORQUE = 125 IN-LBS [143 cm-kg]
 DIMENSIONED IN INCHES [mm]

REVISIONS	TOLERANCES UNLESS NOTED
1. 11/27/02 DM	DECIMALS: ± 0.015 [0.4] FRACTIONS: $\pm 1/32$ [0.8]
MAT'L: 1006 - 1008 CRS	

PLATING NOTES ①

NO SUFFIX	PLAIN STEEL
-B0	BLACK OXIDE
-BZ	BRONZE PLATE
-ZD	ZINC DICHROMATE
-ZN	ZINC PLATE
-**	OTHER PLATINGS (SEE CATALOG)