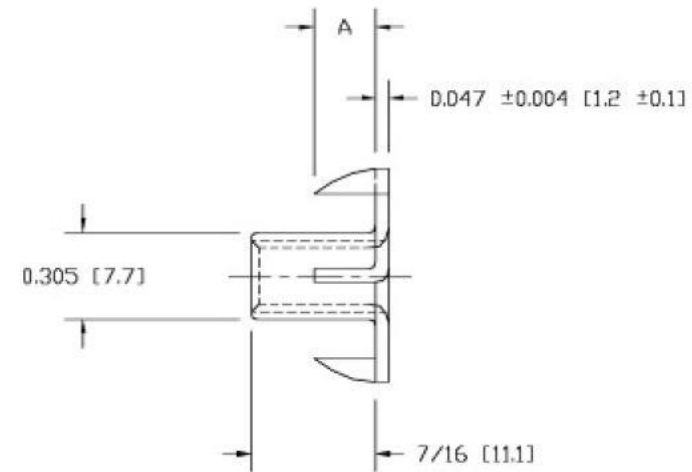
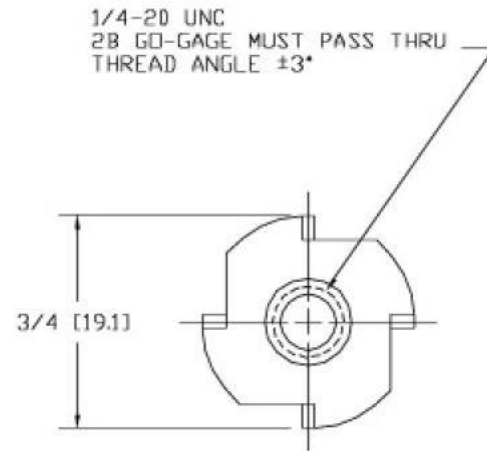


Uncontrolled Document  
For Reference Only



NOTES:  
 FLANGE RADIUS = MATERIAL THICKNESS  $\pm 0.020$  [0.5]  
 MAXIMUM ASSEMBLY TORQUE = 60 IN-LBS [68 cm-kg]  
 DIMENSIONED IN INCHES [mm]

VENDOR	A
Q	15/64 [6.0]
N	1/4 [6.4]

REVISIONS	TOLERANCES UNLESS NOTED
	DECIMALS: $\pm 0.015$ [0.4]
	FRACTIONS: $\pm 1/32$ [0.8]
	MAT'L: 1006 - 1008 CRS