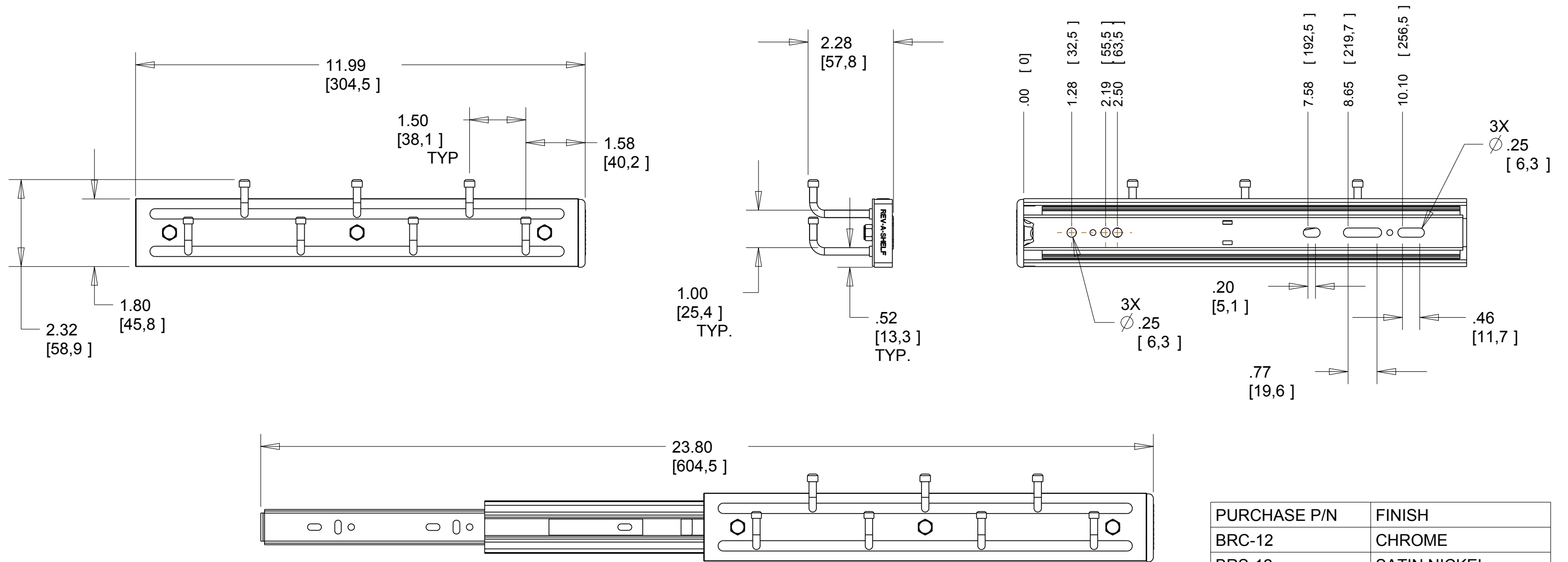


NOTE: SHOWN FOR RIGHT WALL MOUNT.
 FOR LEFT WALL MOUNT:
 REMOVE ACORN NUTS, ROTATE FRONT PLATE 180° AND RE-INSTALL ACORN NUTS.



PURCHASE P/N	FINISH
BRC-12	CHROME
BRS-12	SATIN NICKEL
BRO-12	OIL RUBBED BRONZE

OPEN VIEW

CUSTOMER DRAWING

This drawing is the property of Rev-A-Shelf (RAS) and is disclosed in confidence to the extent its subject matter is original to RAS. Any vendor receiving this drawing from RAS shall hold and use this drawing for the sole benefit of RAS and shall not disclose it to, or use or reproduce it for any third party, or perform any act adverse to the interest of RAS with respect to this drawing without the express written permission of RAS. Vendors shall not revise any physical, dimensional or performance characteristic unless authorized by Rev-A-Shelf Engineering.

REV.	DATE	BY	DESCRIPTION OF CHANGE
B	4-3-12	KRR	ECN12-020
A	9/22/11	BKT	ECN11-058

INCH [MM]	AMERICAN PROJECTION	DRAWN	BY	DATE	REV-A-SHELF, INC.	
		BKT	BKT	7/14/2011	SIZE	B
					DRAWING NO.	BRX-12_CUST
					SCALE	0.143
					FINISH	SEE CHART
					PART NO.	SEE CHART
					SHEET OF	1 2

TOLERANCES
 MAT. DEC.
 (WOOD) .XX ±.03 [.8mm]
 (OTHER) .XX ±.02 [.5mm]
 (ALL) .XXX ±.005 [.13 mm]
 FRACTIONS ± 1/32 [.8 mm]

ANGLES
 ± 1/2°