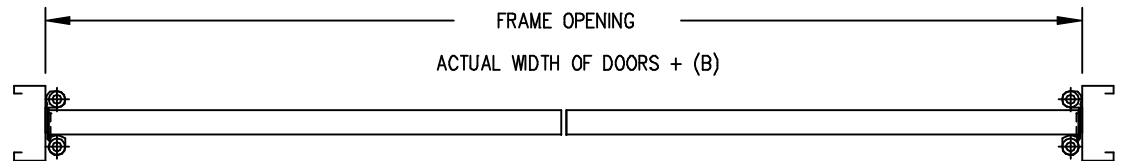
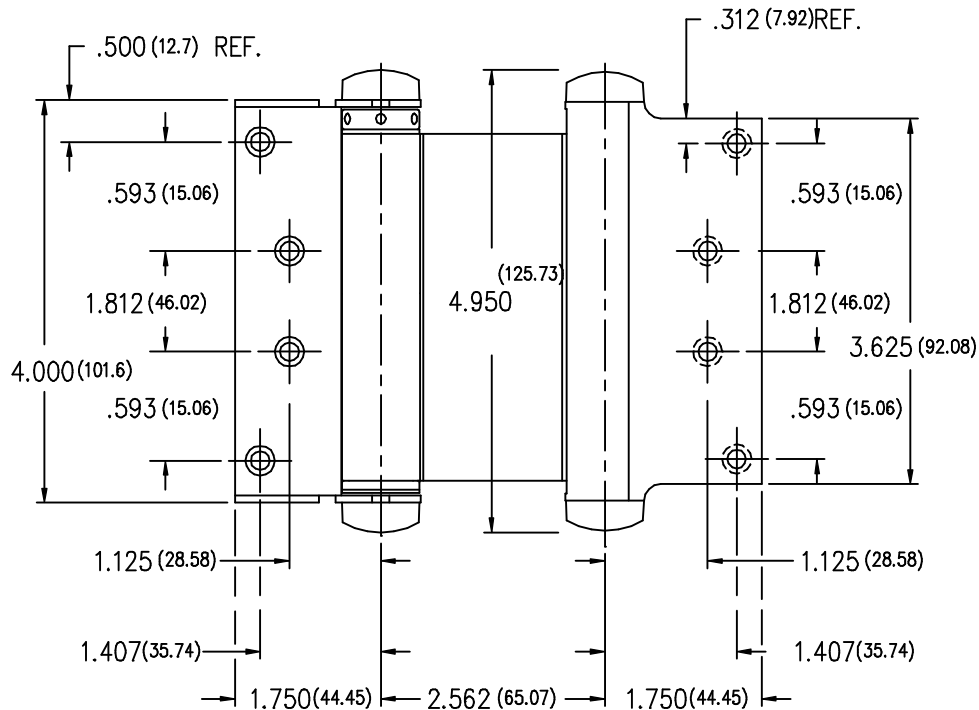
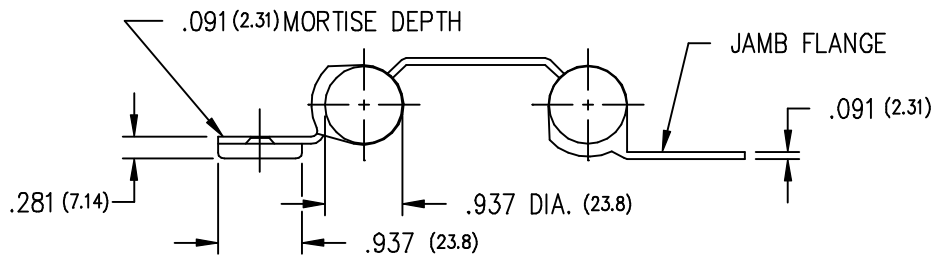


SINGLE DOOR



PAIR OF DOORS



FRAME SIZING INFORMATION

HINGE MOUNTING	(A)	(B)
DOOR FLANGE NOT MORTISED	.470	.940
DOOR FLANGE MORTISED	.379	.758

---NOTES---

- (1) DO NOT USE ON DOORS WITH HINGE EDGE BEVELED.
- (2) INVERT HINGES ON ONE DOOR OF A PAIR FOR PROPER CENTERING.
- (3) DIMENSIONS IN PARENTHESSES ARE MILLIMETERS.
- (4) WOOD SCREW 8 X 3/4".