

# Product Information

<b>Product Number</b> <b>74.1103</b>	<b>Product Description</b> <b>CLIP top Opening Angle Restrictor</b>	<b>Reference Number</b> <b>CE-04-15</b>
---	--	--

<b>Application</b>  The nylon part is inserted into the CLIP top 107 deg. hinge reducing the opening to 86 deg. Used to avoid cabinets hitting each other where 2 cabinets are of different depths or adjacent to range hoods.	<b>Type</b>
	<b>New Product</b>
	<b>Date</b> <b>10/01/04</b>

## Objective

The CLIP top opening angle restrictor will allow Blum's Clip top 107 deg. hinge to compete in the market with similar products from competitors such as Salice.

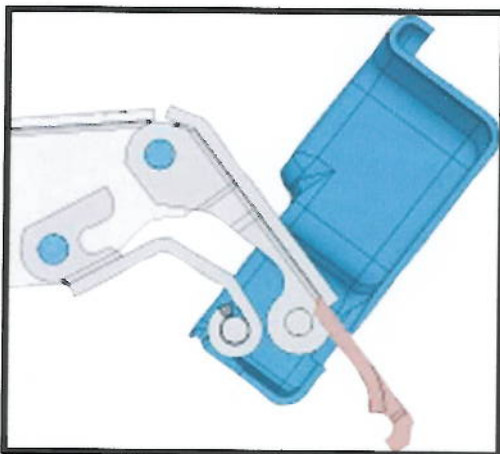
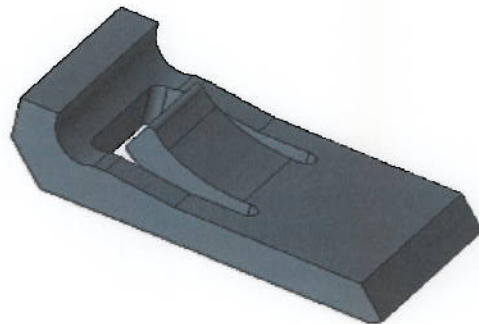
## Technical Details

**Materials:** Nylon

**Packaging:** V250

**Availability:** Oct. 01, 2004

**Price:** Please Contact Your Representative



## Mounting instructions for the opening angle stop 86° (74.1103)

1. Press index finger into boss and close hinge (provides optimal position for assembly)



2. Insert opening angle stop until it engages (finger remains in boss)

