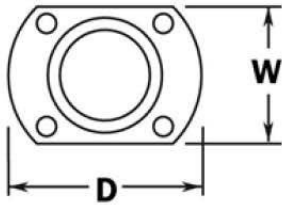


PART# 511112130

Cut Wall Flange for 1-1/2" Diameter Tubing



W	2"
D	3"

MATERIAL & AVAILABLE FINISHES

	BRASS	304 SST	316 SST
Polished	✓	✓	
Satin	✓	✓	
Clear Coat	✓		

MATERIAL USAGE

	BRASS	304 SST	316 SST
Indoor	✓	✓	
Outdoor	✓*		
*Uncoated brass only			

INSTALLATION

Mount plate to the horizontal surface or wall. Mount matching diameter tube inside the neck of the flange. Fix the tube to the neck using the supplied self-drilling screw.

HARDWARE INCLUDED

4 x #10 x 1-1/2" Philips flat head screw. 1 x #8 philips pan head self drilling screw.