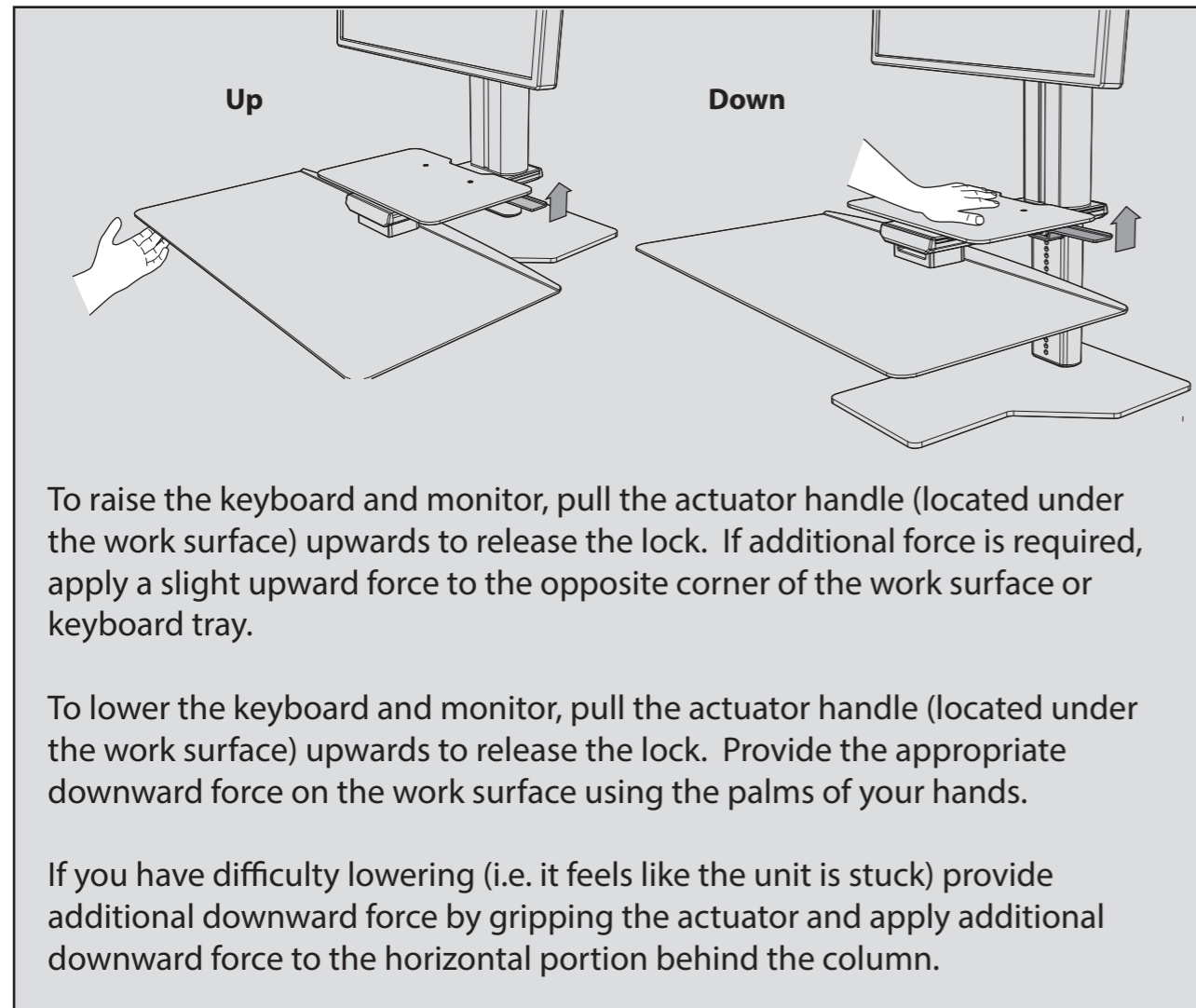
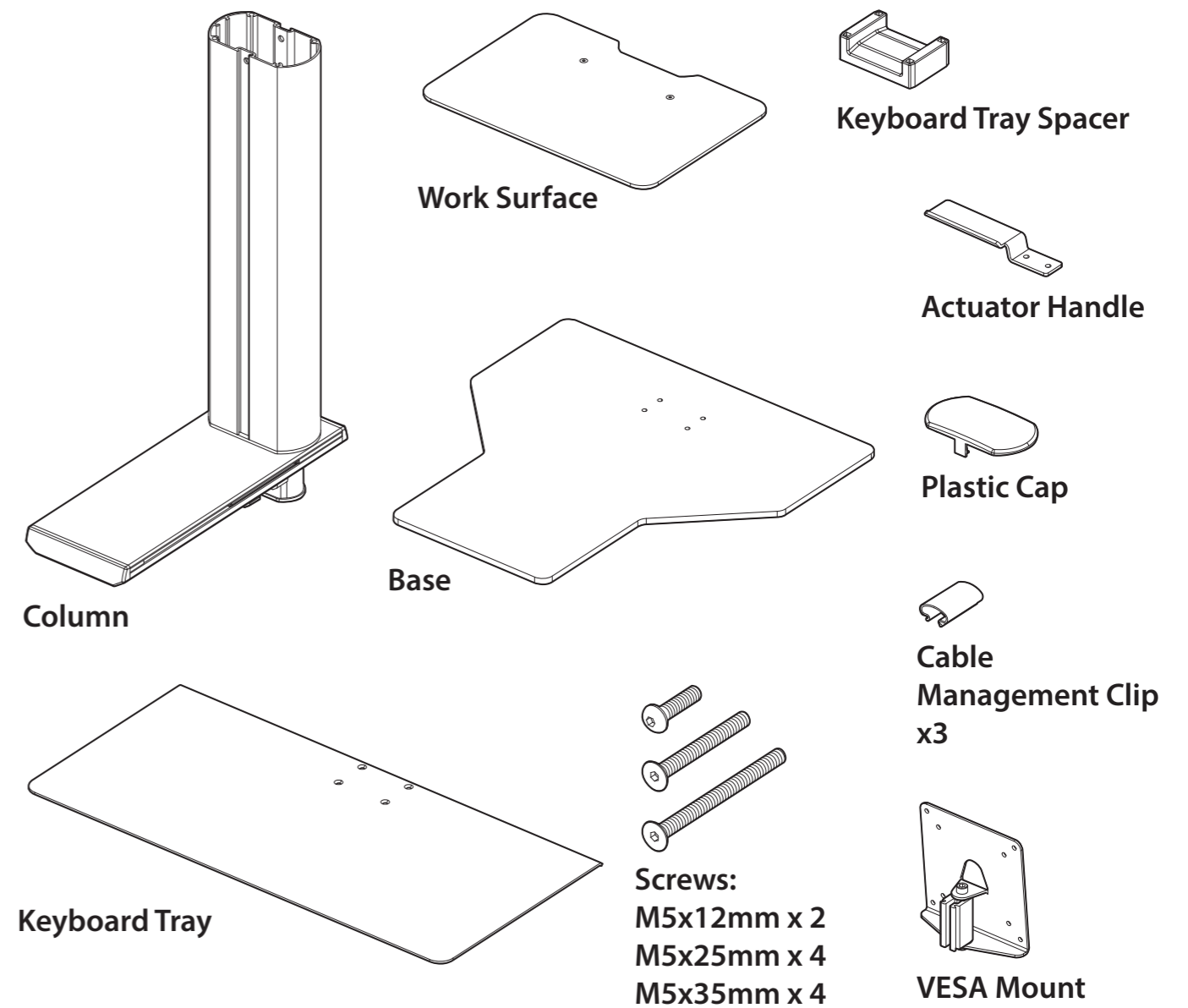


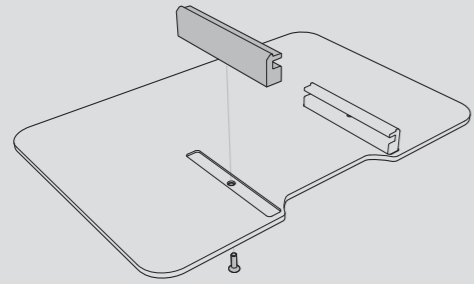
Sit2Stand Single Monitor



Parts:

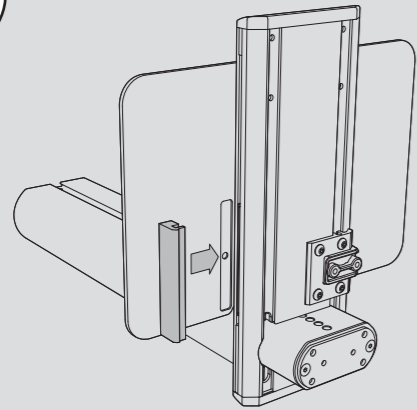


1.



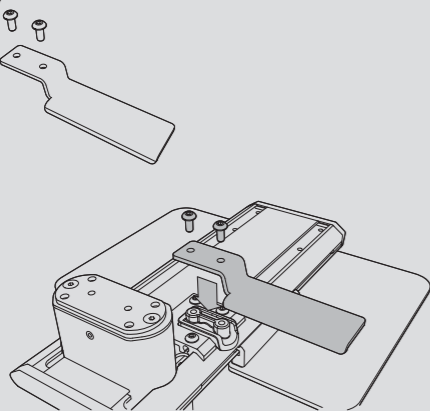
Remove one track from the underside of the work surface and set aside.

3.



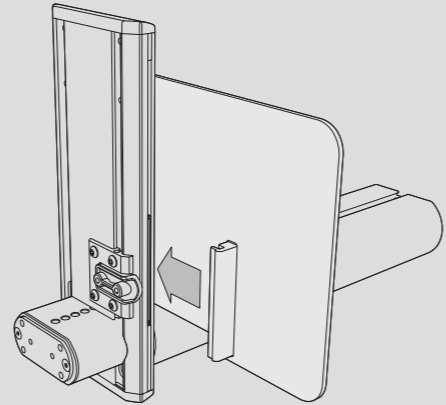
Insert the unattached work surface track into the opposite plastic guide on the column arm and attach using the screw you removed in step 1.

5.



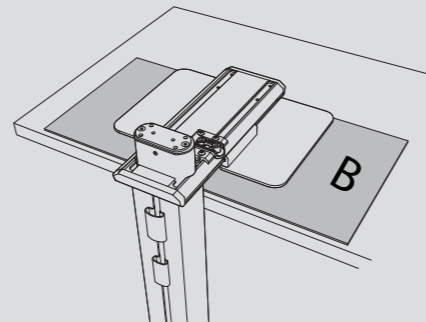
Attach the actuator handle as shown using the M5x12mm screws.

2.



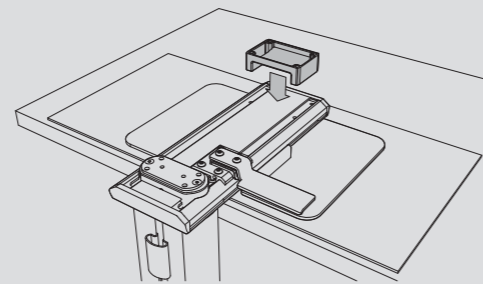
Insert the attached work surface track into the plastic guide on the column arm.

4.



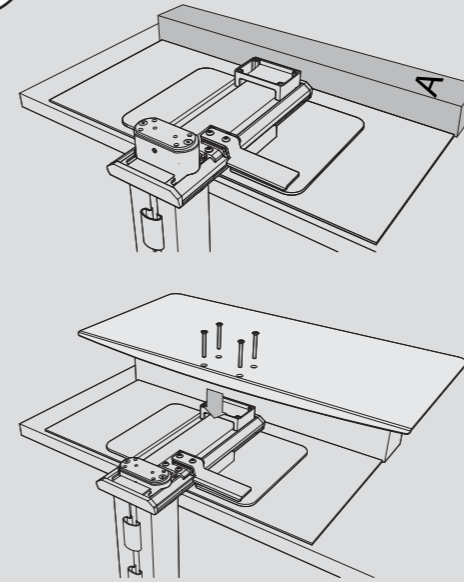
Rest the unit upside down over the edge of a desktop or work surface on top of cardboard divider (marked with "B" in packaging).

6.



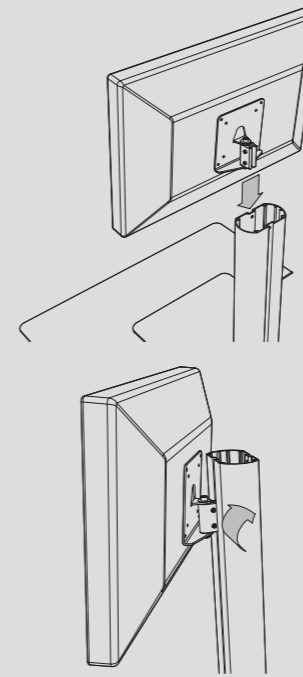
Set the keyboard tray spacer in alignment to the holes on the column arm (aligning the side labeled with BACK towards column).

7.



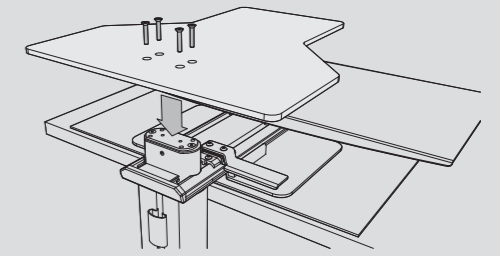
Place the cardboard spacer (labeled "A" in packaging) in front of the unit as shown (to support the keyboard tray) and attach the keyboard tray to the column arm using the M5x35mm screws through the spacer.

9.



Attach your monitor to the VESA mount and then slide into the channel, adjusting to the appropriate height. Tighten the 2 side screws to lock the monitor into place.

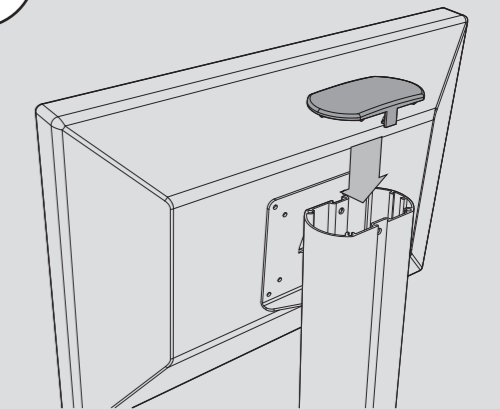
8.



Place some of the bubble wrap on top of the keyboard tray and then attach the baseplate to the vertical column using the M5x25mm screws. Note: The countersunk holes and felt pads of the steel baseplate should be facing you.

When the baseplate is firmly attached, flip the unit over onto the desktop or work surface where you plan to use it.

10.



Affix the plastic cap to the top of column as shown.