



4410905

Practical step stool in a kitchen to get hard to reach stored items in a wall cupboard



4495905



44962G



Application

- Can be stored in a cabinet, hung on a wall or tucked under the toe kick.



Advantages

- Offers a height of 350mm once opened, so allows to reach the item stored in a wall cupboard.
- Thickness of 100mm once folded, so easy to store.
- Include anti-slip rubber feet for safety
- Can be hooked on a wall or at the end of the bottom cabinet with the support # **4495905**. Sold separately
- Can also be tucked under the toe-kick in using the toe-kick bracket and wheels set # **44962G**

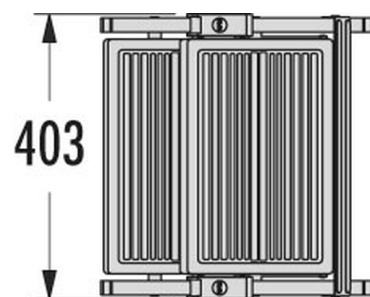
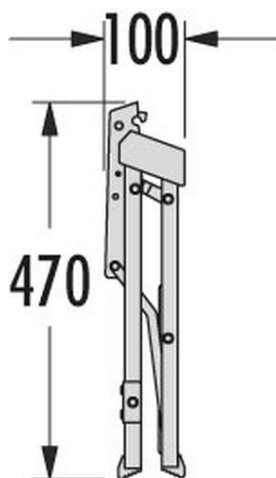
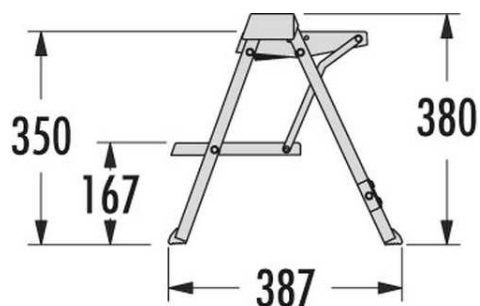


Description

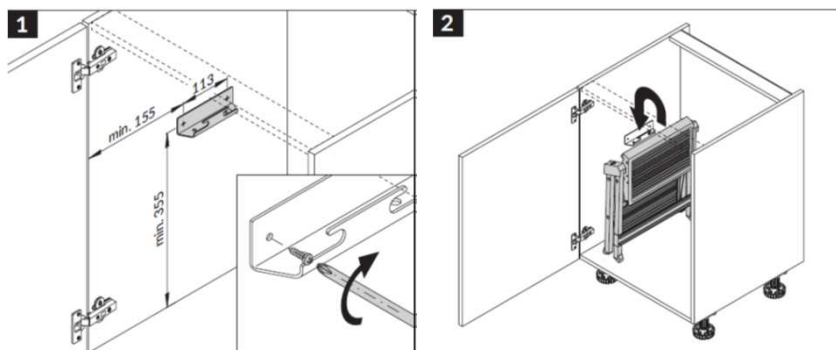
Richelieu offers this step stool in a trendy **Graphite** finish. Can be stored in a cabinet, hung on a wall or tucked under the toe kick.

No.	Description	Prod. Dim. (opened) W x D x H	Prod. Dim. (closed) W x D x H
4410905	FOLDING STEP-STOOL GRAPHITE	403mm x 387mm x 380mm 15 7/8" x 15 1/4" x 15"	403mm x 100mm x 470mm 15 7/8" x 3 15/16" x 18 1/2"
4495905	WALL SUPPORT GRAPHITE		
44962G	STEP STOOL KICK PL.BRAC./WHEEL		

Technical information



Wall storage



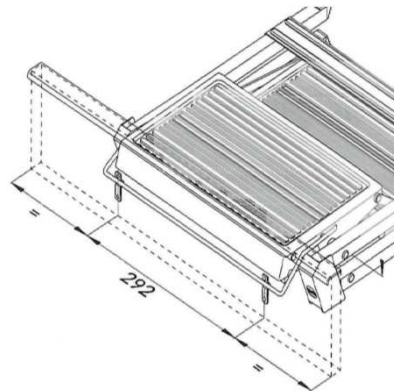
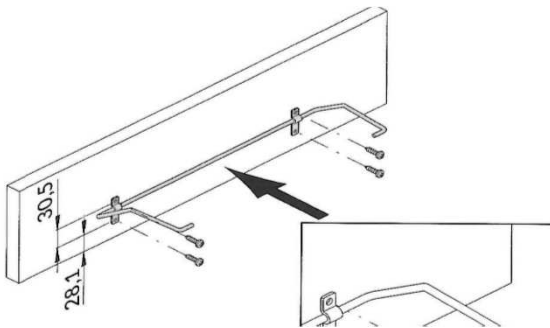
You just have to screw the support
to the wall and hang the step stool

Toe-kick application (with set # 44962G)

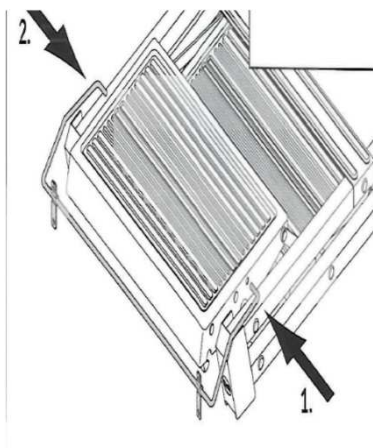
(A min. width of 405mm between cabinet legs and a min. height of 105mm under the cabinet for this application.)

1- Cut your front panel to the width of your cabinet width and the height of the toe-kick.

2- Screw the bracket to the front panel



3- Insert brackets ends into the side holes of the top step



4- Install the 4 wheels (included with the support # 44962G) on the step in the holes provided for this purpose

