



Base pull-out system BPO II Short

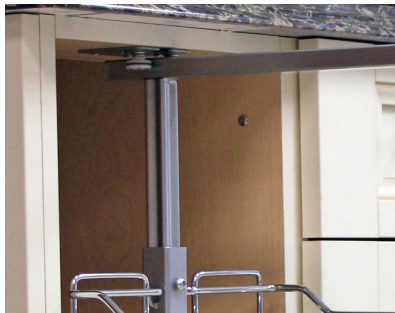


**OUR BASE PULLOUT COMBINES STYLE,
CONVENIENCE, AND VERSATILITY**



Advantages

- This shorter frame allows to install a drawer above the system.
- Slim, center-mounted frame offers easy access from left or right side.
- Create a custom storage solution to suit your needs in adding a choice of accessories.
- Runner provides a smooth soft-close
- 60 lb (27 kg) load rating
- Height adjustable frame from 20" to 28" (508 to 711mm)
- Offered in 2 trendy finishes, silver gray and Champagne.
- Bottom and top mounted to give more stability



Silver Gray finish



Champagne finish

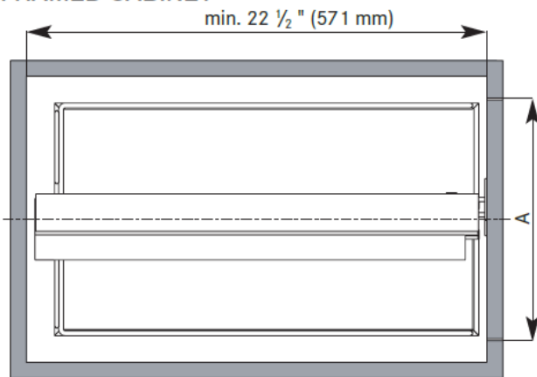
| Description | Silver Gray | Champagne | Product Width | Product Depth | Product Height |
|--------------|-------------|-----------|---------------|---------------|------------------------------|
| Frame BPO II | 2662100 | 2662155 | 3 3/4" (95mm) | 22" (518mm) | 20" to 28" (508 to 711mm) |



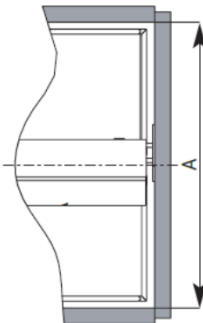
Base pull-out system BPO II Short

Technical information

FRAMED CABINET



FRAMELESS CABINET

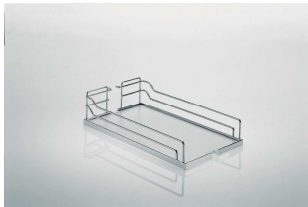


Min. interior dimensions

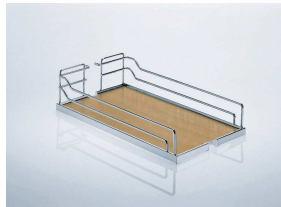
Min. width : depends of the basket or accessory selected

Min. depth : 22 1/2" (571mm)

Min. height : 24 to 32 (610mm to 813mm)



Gray/Chrome



Maple/Chrome



White/Chrome



Maple/Champagne



Anthracite/Chrome

| Min. opening width (A) | Shelf dimension (W x D x H) | Gray/Chrome | Maple/Chrome | White/Chrome | Maple/Champagne | Anthracite/Chrome |
|------------------------|--------------------------------------------|-------------|--------------|--------------|-----------------|-------------------|
| 4 1/2" (114mm) | 4" x 20 3/8" x 4 1/8" (102 x 518 x 105mm) | 33140100 | 33140150 | 3314030 | 33155150 | 33140906 |
| 5 1/2" (140mm) | 5" x 20 3/8" x 4 1/8" (102 x 518 x 105mm) | 24140100 | 24140150 | 2414030 | 24155150 | 24140906 |
| 7 1/2" (191mm) | 7" x 20 3/8" x 4 1/8" (102 x 518 x 105mm) | 34140100 | 34140150 | 3414030 | 34155150 | 34140906 |
| 8 1/2" (216mm) | 8" x 20 3/8" x 4 1/8" (102 x 518 x 105mm) | 25140100 | 25140150 | 2514030 | 25155150 | 25140906 |
| 10 1/2" (267mm) | 10" x 20 3/8" x 4 1/8" (102 x 518 x 105mm) | 35140100 | 35140150 | 3514030 | 35155150 | 35140906 |
| 11 1/2" (292mm) | 11" x 20 3/8" x 4 1/8" (102 x 518 x 105mm) | 26140100 | 26140150 | 2614030 | 26155150 | 26140906 |
| 13 1/2" (343mm) | 13" x 20 3/8" x 4 1/8" (102 x 518 x 105mm) | 36140100 | 36140150 | 3614030 | 36155150 | 36140906 |
| 14 1/2" (368mm) | 14" x 20 3/8" x 4 1/8" (102 x 518 x 105mm) | 27140100 | 27140150 | 2714030 | 27155150 | 27140906 |
| 16 1/2" (419mm) | 16" x 20 3/8" x 4 1/8" (102 x 518 x 105mm) | 37140100 | 37140150 | 3714030 | 37155150 | 37140906 |
| 17 1/2" (445mm) | 17" x 20 3/8" x 4 1/8" (102 x 518 x 105mm) | 28140100 | 28140150 | 2814030 | 28155150 | |
| 19 1/2" (495mm) | 19" x 20 3/8" x 4 1/8" (102 x 518 x 105mm) | 38140100 | 38140150 | 3814030 | 38155150 | |
| 20 1/2" (521mm) | 20" x 20 3/8" x 4 1/8" (102 x 518 x 105mm) | 39140100 | 39140150 | 3914030 | 39155150 | |
| 22 1/2" (572mm) | 22" x 20 3/8" x 4 1/8" (102 x 518 x 105mm) | 40140100 | 40140150 | 4014030 | 40155150 | |



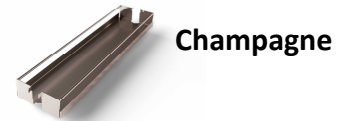
Base pull-out system BPO II Short

Metal trays

| Min. opening | Width (A) | Product Width | Silver Gray | Champagne |
|--------------|-----------|---------------|-------------|-----------|
| 3 7/8" | (98mm) | 3 3/8" (86mm) | 25474100 | 25474155 |
| 4 1/2" | (112mm) | 4" (102mm) | 25475100 | 25475155 |
| 5 1/2" | (140mm) | 5" (127mm) | 25476100 | 25476155 |
| 7 1/2" | (191mm) | 7" (178mm) | 25477100 | 25477155 |



Silver Gray



Champagne

Accessories

Transform your BPO II into a functional storage system that will answer to your specific needs.

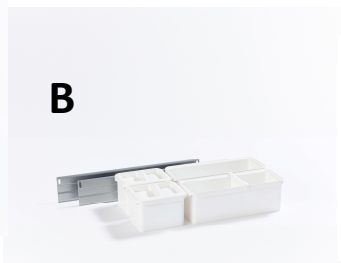


A

Set Youboxx 1

Includes :

- 2 x 1 liter boxes
- 1 x 2,1 liter box
- 2 x 2 liter boxes
- 1 x knife holder insert
- 2 x lids
- 2 traverse rails



B

Set Youboxx 2:

Includes :

- 2 x 1 liter boxes
- 2 x 2,1 liter boxes
- 2 x lids
- 1 x divider, large
- 2 x traverse rails

C



Bakers tray

Includes :

- 2 x wire shelves
- 1 x metal shelf
- 25556-XX** : 4 plastic clips
- 25557-XX** : 6 plastic clips
- 25558-XX** : 8 plastic clips

D



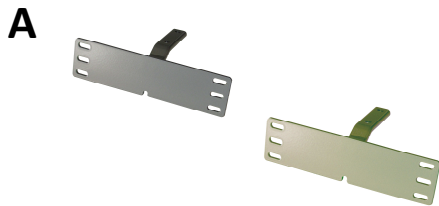
Spice tray

| Ref. | Min. opening | Silver Gray | Champagne | Description | Product dimensions W x D x H |
|------|----------------------|-------------|-----------|--------------------------|--------------------------------------------------------|
| A | 10 1/2 (267mm) * | 25464100 | 25464155 | Set Youbox 1 | 4 1/2" x 17 1/4" x 3 3/4" (114mm x 438mm x 95mm) |
| B | 10 1/2 (267mm) * | 25465100 | 25465155 | Set Youbox 2 | 4 1/2" x 17 1/4" x 3 3/4" (114mm x 438mm x 95mm) |
| C | 3 7/8 (98mm) | 25556100 | 25556155 | Bakers tray 3 5/16" | 3 3/8" x 20 3/8" x min. 8" (86mm x 518mm x min. 203mm) |
| C | 5 1/2 (140mm) | 25557100 | 25557155 | Bakers tray 5" | 5" x 20 3/8" x min. 8" (127mm x 518mm x min. 203mm) |
| C | 7 1/2 (191mm) | 25558100 | 25558155 | Bakers tray 7" | 7" x 20 3/8" x min. 8" (178mm x 518mm x mon. 203mm) |
| D | 10 1/2 (267mm) ** | 25771100 | 25771155 | Spice tray BPO II 4 3/8" | 4 1/2" x 20 1/2" x 1 1/2" (114mm x 521mm x 38mm) |

* (A or B) The minimum opening is based on installing 1 set of rails on each side of the frame (Recommended)

** (D) The min. opening is based for 2 spice trays, one on each side (Recommended)

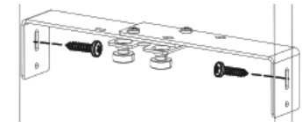
Mounting Accessories



The wide front fixing bracket is required for all cabinets that are wider than 15" (381mm). Optional for less than 15" (381mm). This will replace the original lower bracket only.



Can only be used for frame height of 24 1/8" (613mm) or more



These optional lateral bar supports are used when the top center roller guide can't be mounted directly to the cabinet, most commonly in frameless cabinets.

| Ref. | Description | Silver Gray | Champagne | Product Width | Product Height |
|------|---------------------|-------------|-----------|-------------------------------------|----------------|
| A | Wide door brackets | 2647100 | 2647155 | 5 1/2" (140mm) | 1 1/2" (38mm) |
| B | Additional hook | 4255100 | 4255155 | | 4" (102mm) |
| C | Lateral bar support | 2760452G | | 4 1/2" to 5" (114mm to 127mm) | |
| D | Lateral bar support | 2760752G | | 7 1/2" to 10 1/2" (191mm to 267mm) | |
| E | Lateral bar support | 2761352G | | 13 1/2" to 19 1/2" (343mm to 495mm) | |