



# Base pull-out system BPO II



**OUR BASE PULLOUT COMBINES STYLE, CONVENIENCE, AND VERSATILITY**

## ▶ Advantages

- Slim top rail for easy access.
- Create a custom storage solution to suit your needs in adding a choice of accessories.
- Runner provides a smooth soft-close
- 60 lb (27 kg) load rating
- Height adjustable frame from 24" to 32" (610mm to 813mm)
- Offered in 2 trendy finishes, silver gray and Champagne.
- Bottom and top mounted to give more stability



**Silver Gray finish**



**Champagne finish**



The wide front fixing bracket is required for all cabinets that are wider than 15" (381mm). Optional for less than 15" (381mm). This will replace the original lower bracket only.



Can only be used for frame height of 28 1/8" (715mm) or more

Code	Description	Finish	Product Width	Product Depth	Product Height
2663100	Frame BPO II	Silver Gray	3 3/4" (95mm)	22" (518mm)	24" to 32" (610mm to 813mm)
2663155	Frame BPO II	Champagne	3 3/4" (95mm)	22" (518mm)	24" to 32" (610mm to 813mm)
2647100	Wide door bracket	Silver Gray	5 1/2" (140mm)		1 1/2" (38mm)
2647155	Wide door bracket	Champagne	5 1/2" (140mm)		1 1/2" (38mm)
4255100	Additoinal hook	Silver Gray			4" (102mm)
4255155	Additoinal hook	Champagne			4" (102mm)

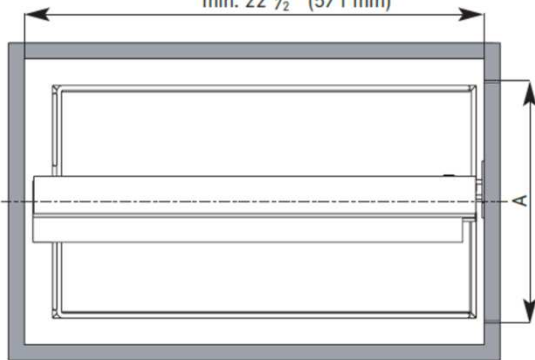


# Base pull-out system BPO II

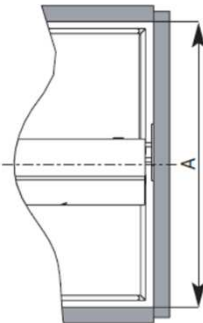
## Technical information

FRAMED CABINET

min. 22 1/2" (571 mm)



FRAMELESS CABINET

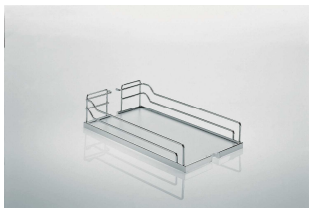


### Min. interior dimensions

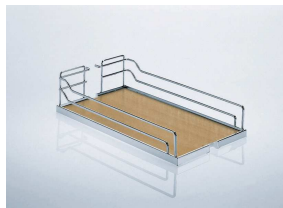
**Min. width :** depends of the basket or accessory selected

**Min. depth :** 22 1/2" (571mm)

**Min. height :** 24 to 32 (610mm to 813mm)



Gray/Chrome



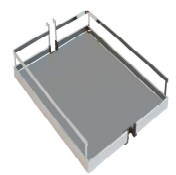
Maple/Chrome



White/Chrome



Maple/Champagne



Anthracite/Chrome  
With STYLE railing

Min. opening width (A)	Shelf dimension (W x D x H)	Gray/Chrome	Maple/Chrome	White/Chrome	Maple/Champagne	Anthracite/Chrome
4 1/2" (114mm)	4" x 20 3/8" x 4 1/8" (102 x 518 x 105mm)	33140100	33140150	3314030	33155150	33140906
5 1/2" (140mm)	5" x 20 3/8" x 4 1/8" (127 x 518 x 105mm)	24140100	24140150	2414030	24155150	24140906
7 1/2" (191mm)	7" x 20 3/8" x 4 1/8" (178 x 518 x 105mm)	34140100	34140150	3414030	34155150	34140906
8 1/2" (216mm)	8" x 20 3/8" x 4 1/8" (203 x 518 x 105mm)	25140100	25140150	2514030	25155150	25140906
10 1/2" (267mm)	10" x 20 3/8" x 4 1/8" (254 x 518 x 105mm)	35140100	35140150	3514030	35155150	35140906
11 1/2" (292mm)	11" x 20 3/8" x 4 1/8" (279 x 518 x 105mm)	26140100	26140150	2614030	26155150	26140906
13 1/2" (343mm)	13" x 20 3/8" x 4 1/8" (330 x 518 x 105mm)	36140100	36140150	3614030	36155150	36140906
14 1/2" (368mm)	14" x 20 3/8" x 4 1/8" (356 x 518 x 105mm)	27140100	27140150	2714030	27155150	27140906
16 1/2" (419mm)	16" x 20 3/8" x 4 1/8" (406 x 518 x 105mm)	37140100	37140150	3714030	37155150	37140906
17 1/2" (445mm)	17" x 20 3/8" x 4 1/8" (432 x 518 x 105mm)	28140100	28140150	2814030	28155150	
19 1/2" (495mm)	19" x 20 3/8" x 4 1/8" (483 x 518 x 105mm)	38140100	38140150	3814030	38155150	
20 1/2" (521mm)	20" x 20 3/8" x 4 1/8" (508 x 518 x 105mm)	39140100	39140150	3914030	39155150	
22 1/2" (572mm)	22" x 20 3/8" x 4 1/8" (559 x 518 x 105mm)	40140100	40140150	4014030	40155150	

## Metal trays

Min. opening Width (A)	Product Width	Silver Gray	Champagne
3 7/8" (98mm)	3 3/8" (86mm)	25474100	25474155
4 1/2" (112mm)	4" (102mm)	25475100	25475155
5 1/2" (140mm)	5" (127mm)	25476100	25476155
7 1/2" (191mm)	7" (178mm)	25477100	25477155



Silver Gray



Champagne

## Accessories

Transform your BPO II into a functional storage system that will answer to your specific needs.

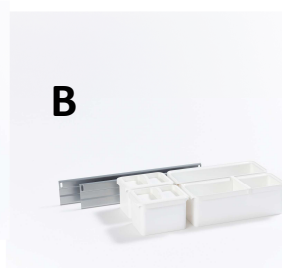


A

### Set Youboxx 1

Includes :

- 2 x 1 liter boxes
- 1 x 2,1 liter box
- 2 x 2 liter boxes
- 1 x knife box
- 2 x lids
- 2 traverse rails



B

### Set Youboxx 2:

Includes :

- 2 x 1 liter boxes
- 2 x 2,1 liter boxes
- 2 x lids
- 1 x divider, large
- 2 x traverse rails



C

### Bakers tray

Includes :

- 2 x wire shelves
- 1 x metal shelf
- 25556-XX : 4 plastic clips
- 25557-XX : 6 plastic clips
- 25558-XX : 8 plastic clips



D

### Spice tray

\* Based on installing 1 set of rails on each side of the frame (Recommended)

\* The min. opening is for 2 spice trays, one on each side (Recommended)

Ref.	Min. opening	Silver Gray	Champagne	Description	Product dimensions W x D x H
A	10 1/2" (267mm)*	25464100	25464155	Set Youbox 1	4 1/2" x 17 1/4" x 3 3/4" (114mm x 438mm x 95mm)
B	10 1/2" (267mm)*	25465100	25465155	Set Youbox 2	4 1/2" x 17 1/4" x 3 3/4" (114mm x 438mm x 95mm)
C	3 7/8" (98mm)	25556100	25556155	Bakers tray 3 5/16"	3 3/8" x 20 3/8" x min. 8" (86mm x 518mm x min. 203mm)
C	5 1/2" (140mm)	25557100	25557155	Bakers tray 5"	5" x 20 3/8" x min. 8" (127mm x 518mm x min. 203mm)
C	7 1/2" (191mm)	25558100	25558155	Bakers tray 7"	7" x 20 3/8" x min. 8" (178mm x 518mm x mon. 203mm)
D	10 1/2" (267mm)*	25771100	25771155	Spice tray BPO II 4 3/8"	4 1/2" x 20 1/2" x 1 1/2" (114mm x 521mm x 38mm)