

Concealed Clip-On Hinge for Face Frame Cabinets

COMPACT CLIP features

- Utilizes our CLIP technology, so doors can be attached and removed tool-free
- Three-dimensional cam adjustment with directional arrows for easy and precise adjustability
- Reduces the risk of stripped screws or damage to the face frame
- Same boring pattern as COMPACT BLUMOTION
- Deactivation switch for small/light doors
- Factory setting remains the same, after door removal and repeated attachment, significantly reducing final adjustment time
- Standard and custom logo cover caps available

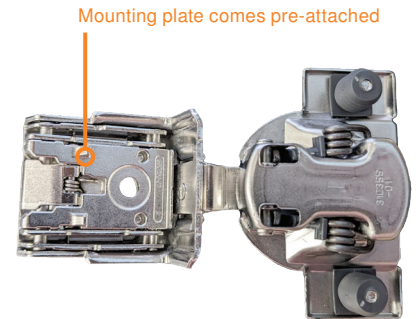
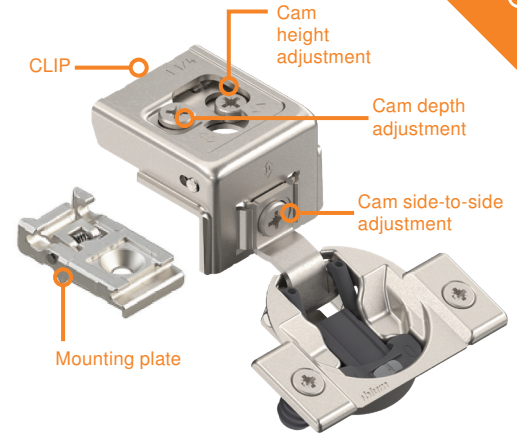
Three-dimensional cam adjustment

- Three-dimensional cam adjustment
- Height adjustment: $\pm 5/64$ "
- Side-to-side adjustment: $\pm 1/16$ "
- Depth adjustment: $+3/32$ "– $-1/32$ "

Full overlay wraparound hinges

- $5/16$ ", $3/8$ ", $7/16$ ", $1/2$ ", $5/8$ ", $3/4$ "

#8 flat head screw recommended.



CLIP technology

The CLIP technology reduces the risk of damage to cabinet frames because doors can be removed and reattached without removing any screws.

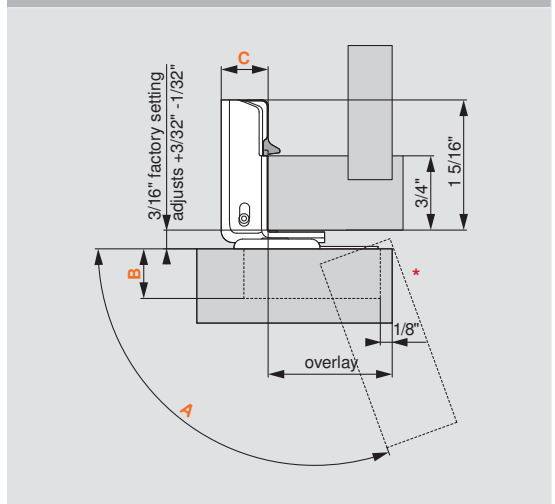
Cam height adjustment

This new feature allows doors to be adjusted up and down, without removing screws and repositioning the door.

Interchangeability

COMPACT CLIP hinges are interchangeable with all current COMPACT BLUMOTION and COMPACT hinges so there is no need to change existing setups or workflows.

Dimensions





*Actual wrap around dimension is 19.4mm


Hinge	A: opening angle	B: cup depth	C: hinge protrusion	Minimum reveal for 3/4" door
31C3 full overlay	110°	1/2"	15/32"	7/32"
31C1 full overlay	107°	7/16"	15/32"	9/32"
30C2 partial overlay	105°	7/16"	17/32"	9/32"

Concealed Clip-On Hinge for Face Frame Cabinets

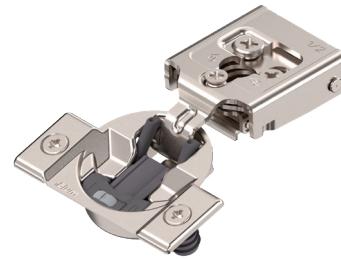
COMPACT CLIP Program

COMPACT CLIP 31C3 for full overlay (1/2" cup depth)		
Overlay	Screw-on	 Press-in
1"	31C355B.16	31C358B.16
1-1/4"	31C355B.20	31C358B.20
1-5/16"	31C355B.21	31C358B.21
1-3/8"	31C355B.22	31C358B.22
1-1/2"	31C355B.24	31C358B.24
1-9/16"	—	31C358B.25

COMPACT CLIP 31C1 for full overlay (7/16" cup depth)		
Overlay	Screw-on	 Press-in
1-1/4"	—	31C158B.20

COMPACT CLIP 30C2 for partial overlay (7/16" cup depth)		
Overlay	Screw-on	 Press-in
5/16"	—	30C258B.05
3/8"	30C255B.06	30C258B.06
1/2"	30C255B.08	30C258B.08
5/8"	30C255B.10	30C258B.10
3/4"	30C255B.12	30C258B.12
Edge mount		
1/2"	30C255B.E8	30C258B.E8

Accessories	
30C blank cover cap	30C2508
30C logo cover cap	30C2508.BL
31C blank cover cap	31C1508
31C logo cover cap	31C1508.BL
Restriction clip	38C315B3.1



Restriction clip



Sign up now for a free E-SERVICES account.
e-services.blum.com



Find out more about our E-SERVICES:
blum.com/e-services