



# Base pull-out system BPO II



OUR BASE PULLOUT COMBINES STYLE, CONVENIENCE, AND VERSATILITY



## Advantages

- Slim, center-mounted frame offers easy access from left or right side.
- Create a custom storage solution to suit your needs in adding a choice of accessories.
- Runner provides a smooth soft-close
- 60 lb (27 kg) load rating
- Height adjustable frame from 24" to 32" (610mm to 813mm)
- Offered in trendy silver gray finish.
- Bottom and top mounted to give more stability



Silver Gray finish



The wide front fixing bracket is required for all cabinets that are wider than 15" (381mm). Optional for less than 15" (381mm). This will replace the original lower bracket only.



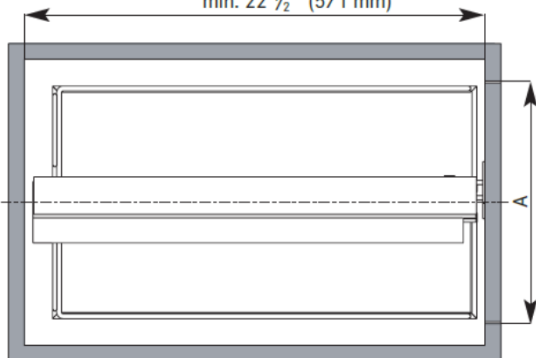
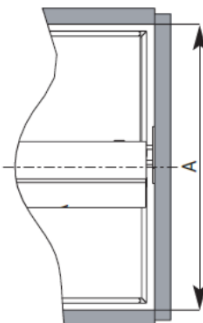
Can only be used for frame height of 28 1/8" (715mm) or more

| Code    | Description       | Finish      | Product Width  | Product Depth | Product Height              |
|---------|-------------------|-------------|----------------|---------------|-----------------------------|
| 2663100 | Frame BPO II      | Silver Gray | 3 3/4" (95mm)  | 22" (518mm)   | 24" to 32" (610mm to 813mm) |
| 2647100 | Wide door bracket | Silver Gray | 5 1/2" (140mm) |               | 1 1/2" (38mm)               |
| 4255100 | Additoinal hook   | Silver Gray |                |               | 4" (102mm)                  |

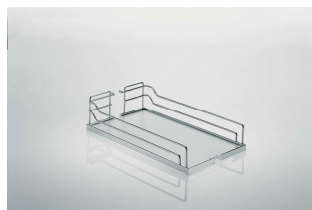
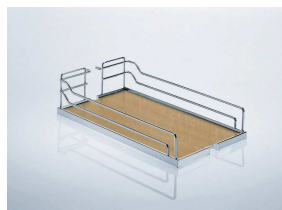
### Technical information

**FRAMED CABINET**

min. 22 ½" (571 mm)


**FRAMELESS CABINET**

**Min. interior dimensions**
**Min. width** : depends of the basket or accessory selected

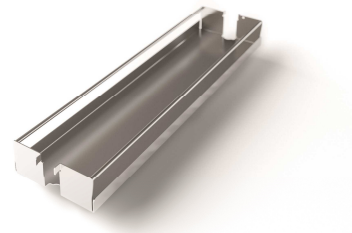
**Min. depth** : 22 ½" (571mm)

**Min. height** : 24 to 32 (610mm to 813mm)

**Gray/Chrome**

**Maple/Chrome**

| Min. opening width (A) | Shelf dimension (W x D x H)                | Gray/Chrome | Maple/Chrome |
|------------------------|--|-------------|--------------|
| 4 ½" (114mm)           | 4" x 20 3/8" x 4 1/8" (102 x 518 x 105mm)  | 33140100    | 33140150     |
| 5 ½" (140mm)           | 5" x 20 3/8" x 4 1/8" (102 x 518 x 105mm)  | 24140100    | 24140150     |
| 7 ½" (191mm)           | 7" x 20 3/8" x 4 1/8" (102 x 518 x 105mm)  | 34140100    | 34140150     |
| 8 ½" (216mm)           | 8" x 20 3/8" x 4 1/8" (102 x 518 x 105mm)  | 25140100    | 25140150     |
| 10 ½" (267mm)          | 10" x 20 3/8" x 4 1/8" (102 x 518 x 105mm) | 35140100    | 35140150     |
| 11 ½" (292mm)          | 11" x 20 3/8" x 4 1/8" (102 x 518 x 105mm) | 26140100    | 26140150     |
| 13 ½" (343mm)          | 13" x 20 3/8" x 4 1/8" (102 x 518 x 105mm) | 36140100    | 36140150     |
| 14 ½" (368mm)          | 14" x 20 3/8" x 4 1/8" (102 x 518 x 105mm) | 27140100    | 27140150     |
| 16 ½" (419mm)          | 16" x 20 3/8" x 4 1/8" (102 x 518 x 105mm) | 37140100    | 37140150     |
| 17 ½" (445mm)          | 17" x 20 3/8" x 4 1/8" (102 x 518 x 105mm) | 28140100    | 28140150     |
| 19 ½" (495mm)          | 19" x 20 3/8" x 4 1/8" (102 x 518 x 105mm) | 38140100    | 38140150     |
| 20 ½" (521mm)          | 20" x 20 3/8" x 4 1/8" (102 x 518 x 105mm) | 39140100    | 39140150     |
| 22 ½" (572mm)          | 22" x 20 3/8" x 4 1/8" (102 x 518 x 105mm) | 40140100    | 40140150     |

## Metal trays

| Min. opening Width (A) | Product Width | Silver Gray     |
|------------------------|---------------|-----------------|
| 3 7/8" (98mm)          | 3 3/8" (86mm) | <b>25474100</b> |
| 4 1/2" (112mm)         | 4" (102mm)    | <b>25475100</b> |
| 5 1/2" (140mm)         | 5" (127mm)    | <b>25476100</b> |
| 7 1/2" (191mm)         | 7" (178mm)    | <b>25477100</b> |



Silver Gray

## Accessories

Transform your BPO II into a functional storage system that will answer to your specific needs.

**A**

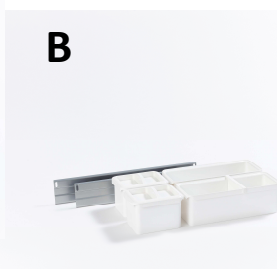


**Set Youboxx 1**

Includes :

- 2 x 1 liter boxes
- 1 x 2,1 liter box
- 2 x 2 liter boxes
- 1 x knife holder insert
- 2 x lids
- 2 traverse rails

**B**



**Set Youboxx 2:**

Includes :

- 2 x 1 liter boxes
- 2 x 2,1 liter boxes
- 2 x lids
- 1 x divider, large
- 2 x traverse rails

**C**



**Bakers tray**

Includes :

- 2 x wire shelves
- 1 x metal shelf
- 25556100** : 4 plastic clips
- 25557100** : 6 plastic clips
- 25558100** : 8 plastic clips

**D**



**Spice tray**

| Ref.     | Min. opening      | Silver Gray | Description              | Product dimensions<br>W x D x H                        |
|----------|-------------------|-------------|--------------------------|--|
| <b>A</b> | 10 1/2" (267mm)*  | 25464100    | Set Youbox 1             | 4 1/2" x 17 1/4" x 3 3/4" (114mm x 438mm x 95mm)       |
| <b>B</b> | 10 1/2" (267mm)*  | 25465100    | Set Youbox 2             | 4 1/2" x 17 1/4" x 3 3/4" (114mm x 438mm x 95mm)       |
| <b>C</b> | 3 7/8" (98mm)     | 25556100    | Bakers tray 3 3/8"       | 3 3/8" x 20 3/8" x min. 8" (86mm x 518mm x min. 203mm) |
| <b>C</b> | 5 1/2" (140mm)    | 25557100    | Bakers tray 5"           | 5" x 20 3/8" x min. 8" (127mm x 518mm x min. 203mm)    |
| <b>C</b> | 7 1/2" (191mm)    | 25558100    | Bakers tray 7"           | 7" x 20 3/8" x min. 8" (178mm x 518mm x mon. 203mm)    |
| <b>D</b> | 10 1/2" (267mm)** | 25771100    | Spice tray BPO II 4 3/8" | 4 1/2" x 20 1/2" x 1 1/2" (114mm x 521mm x 38mm)       |

\* (A or B) The minimum opening is based on installing 1 set of rails on each side of the frame (Recommended)

\*\* (D) The min. opening is based for 2 spice trays, one on each side (Recommended)