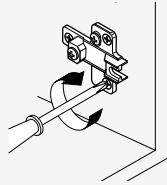
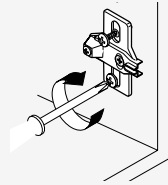


Mounting plate-to-cabinet



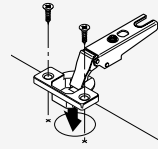
Screw-on



EXPANDO

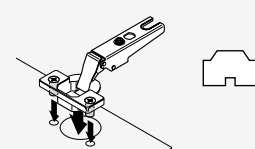
Hinge-to-door attachment

Screw-on



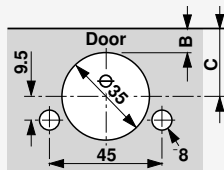
Use #6 wood screws

Press-in



Pre-attached dowels, install with Blum MINIPRESS

Blum boring pattern



C Cup centerpoint					
20.5	21.5	22.5	23.5	24.5	25.5
3	4	5	6	7*	8*

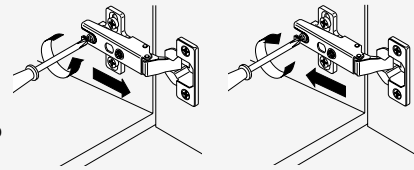
B Bore distance

* only for use with select Blum hinges

Cup centerpoint is the MINIPRESS or MINIDRILL fence depth position.

Door-to-cabinet attachment

To install slide hinge on to the mounting plate, tighten rear fixing screw.

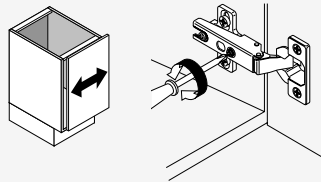


Loosen rear fixing screw and pull hinge forward to remove.

Three-dimensional adjustment

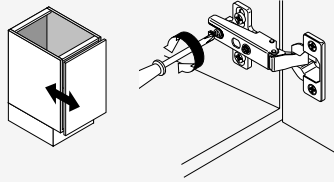
Side adjustment

Turn front screw to increase or decrease door overlay.
 Range = +/-2mm



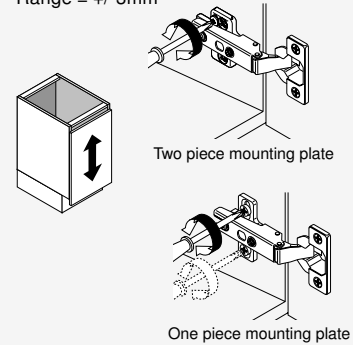
Depth adjustment

Loosen back screw. Adjust door to position and tighten screw.
 Range = +/-2mm

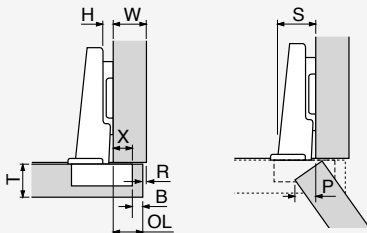


Height adjustment

Loosen screw(s) on the mounting plate. Adjust door to position and tighten screws.
 Range = +/-3mm

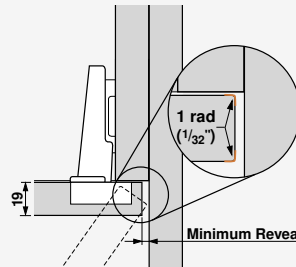


Hinge dimension abbreviations



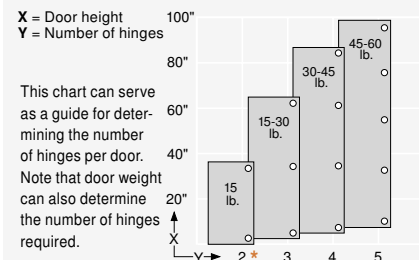
- B = Boring distance
- H = Mounting plate height
- OL = Door overlay
- P = Door protrusion (at max opening)
- R = Reveal
- S = Hinge arm protrusion
- T = Door thickness
- W = Side panel width
- X = Fixed cup distance

Minimum reveal



A minimum reveal per door is required to keep the door from binding and varies depending on door thickness (see Minimum reveal table for each hinge). Minimum reveal based on outside door edge with radius of 1 (1/32").

Hinges per door



* The distance between the two hinges must be greater than the width of the door for maximum stability.