

P 0 1 8 0



Titus International Limited  
Ridgeway Ind. Estate, Iwer  
Buckinghamshire SL0 9HW  
England

THIS DOCUMENT IS CONFIDENTIAL AND OUR PROPERTY AND WE RESERVE ALL RIGHTS WORLDWIDE INCLUDING COPYRIGHT PATENT AND DESIGN RIGHTS IN IT AND THE INFORMATION IT CONTAINS IT MUST NOT BE COPIED OR SHOWN TO OTHERS AND NEITHER IT NOR THE INFORMATION IN IT MUST BE USED FOR ANY PURPOSE EXCEPT THAT FOR WHICH IT IS PROVIDED WITHOUT OUR WRITTEN CONSENT ©TITUS INTERNATIONAL 1992

ALL UNSPECIFIED TOLERANCES :-  
ANGLES: +/ -1° 0.0; +/ -0.3 0.00; +/ -0.2 0.000; +/ -0.

TITLE  
**SPECIAL SCREW**

MATERIAL  
**ZINC ALLOY ZA2**

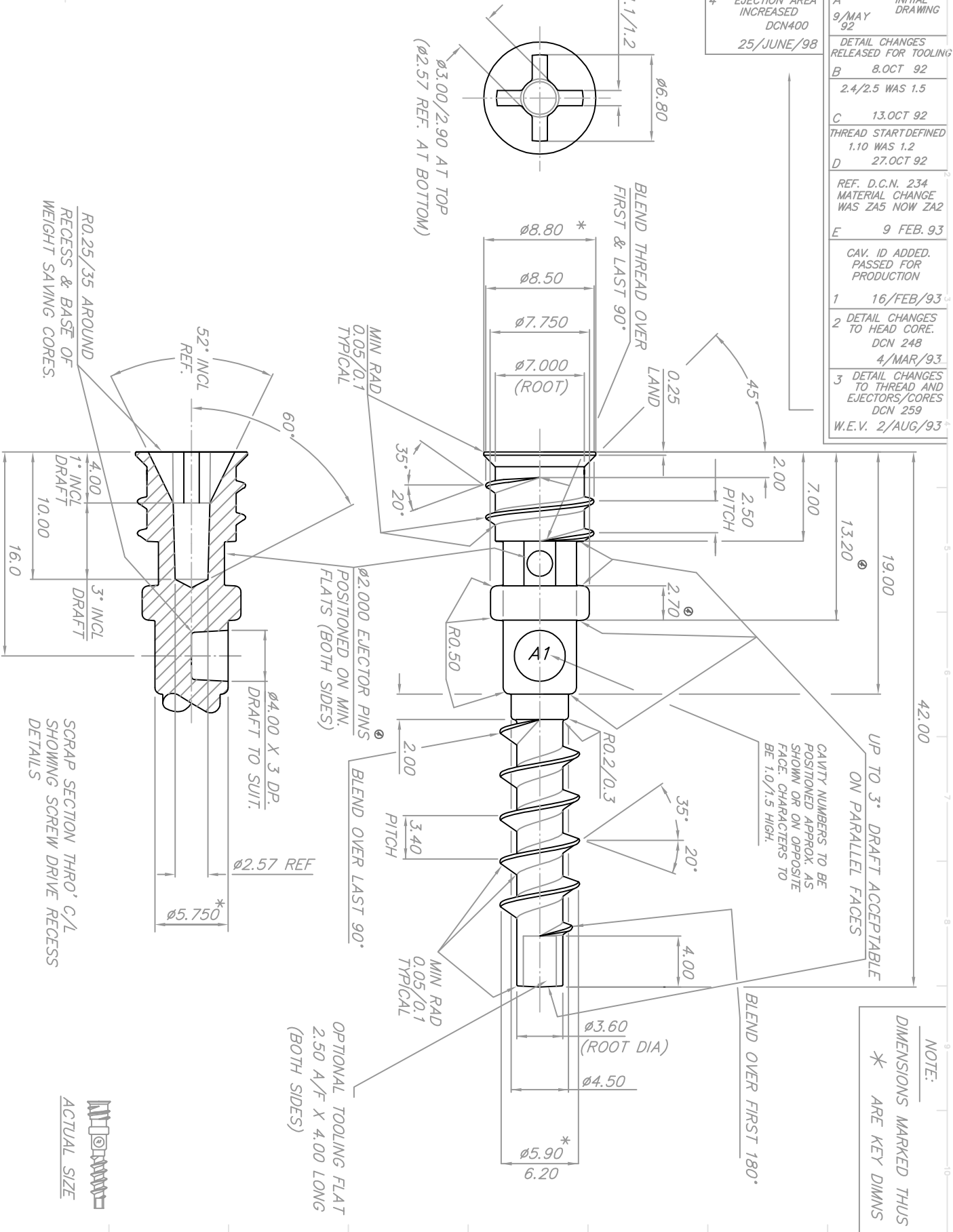
ALL DIMS IN mm's

DESIGN: **W.E.V.**  
DRAWN: **YOUELLINE**  
DATE: **27.APR.92**  
SCALE: **5 : 1**

PART No.  
**P0180**  
NPD No. **164**  
REVISIONS

BASICALLY TO SUIT: NOTE: ALL WORK UNDERTAKEN WITH REFERENCE TO THIS DRAWING MUST BE IN ACCORDANCE WITH THE COMPANY ENGINEERING STANDARDS MANUAL

4	EJECTION AREA INCREASED DCN400 25/JUNE/98	A	INITIAL DRAWING 9/MAY 92
		B	DETAIL CHANGES RELEASED FOR TOOLING 8.OCT 92 2.4/2.5 WAS 1.5
		C	13.OCT 92 THREAD START DEFINED 1.10 WAS 1.2
		D	27.OCT 92 REF. D.C.N. 234 MATERIAL CHANGE WAS ZA5 NOW ZA2
		E	9 FEB. 93 CAV. ID ADDED. PASSED FOR PRODUCTION
1	16/FEB/93		
2	DETAIL CHANGES TO HEAD CORE. DCN 248 4/MAR/93		
3	DETAIL CHANGES TO THREAD AND EJECTORS/CORES DCN 259 W.E.V. 2/AUG/93		



NOTE:  
DIMENSIONS MARKED WITH \* ARE KEY DIMNS

