

# PRE-FINISHED BIRCH DRAWER SIDES

## QUICK ASSEMBLING

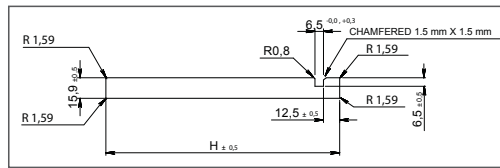


BIRCH DRAWER SIDES, PRE-FINISHED WITH AN ULTRAVIOLET-CURED LACQUER. PERFECT FOR RABBIT JOINT, KREG JIG AND DOVETAIL ASSEMBLIES.

- **Nordic Birch**
- Low labor cost when using a pre-finished drawer bottom
- Specific heights to accommodate 1" (25 mm) center to center dovetailing
- Drawer sides are grooved 1/4" (6.5 mm) to insert a 7/32" (5.2 mm) thick bottom drawer
- Fits with *Blum Tandem* runners, as well as Richelieu and most other brands of undermount soft-closing slides

### FORMATS:

Thickness: 5/8" (15.9 mm)  
Groove depth: 1/4" (6.5 mm)  
Groove width: 1/4" (6.5 mm)



HEIGHT \ LENGTH	22" (559 mm)	30" (762 mm)	36" (914 mm)	42" (1.07 m)	82" (2.08 m)
3 3/8" (86 mm)	-	-	-	1033842ABNF	1033882ABNF 1033882ABSF 1033882BCWF
4 1/8" (105 mm)	1041822ABNF	1041830ABNF	-	1041842ABNF	1041882ABSF 1041882BCWF
5 3/8" (136 mm)	1053822ABNF	-	-	-	1053882ABSF 1053882BCWF
6 1/4" (159 mm)	1061422ABNF	-	1061436ABNF	-	1061482ABSF 1061482BCWF
7 1/8" (180 mm)	1071822ABNF	-	-	-	1071882ABSF 1071882BCNF 1071882BCWF
8 1/4" (210 mm)	1081422ABNF	1081430ABNF	-	1081442ABNF	1081482ABSF 1081482BCWF

### PRODUCT CODE DEFINITION

#### GRADE:

A/B: "A" grade on the outside of drawer, "B" grade on the inside of drawer

B/C: "B" grade on the outside of drawer, "C" grade on the inside of drawer

#### CONSTRUCTION:

NF: No finger joint      WF: With finger joints      SF: Skip finger joints

Please consult our website for more information on grades and product construction.





# FULLY ASSEMBLED CUSTOM DRAWERS

**FAST & EASY!**

Visit us online at: [www.richelieu.com](http://www.richelieu.com)

**TRY OUR STEP-BY-STEP CONFIGURATOR WITHIN OUR DOORS & DRAWERS SECTION, TO ORDER FULLY ASSEMBLED CUSTOM DRAWERS ACCORDING TO YOUR SPECIFICATIONS!**

**ONLY A FEW CLICKS ARE REQUIRED TO ORDER YOUR OWN DESIGNS.**

DOVETAIL ASSEMBLY



DRAWERCNDE2017\_02-2017  
Printed in Canada \$1

