

PRE-FINISHED BIRCH DRAWER SIDES

QUICK ASSEMBLING

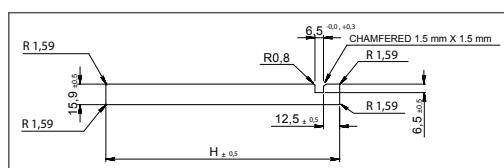


BIRCH DRAWER SIDES, PRE-FINISHED WITH AN ULTRAVIOLET-CURED LACQUER. PERFECT FOR RABBET JOINT, KREG JIG AND DOVETAIL ASSEMBLIES.

- **Nordic Birch**
- Low labor cost when using a pre-finished drawer bottom
- Specific heights to accommodate 1" (25 mm) center to center dovetailing
- Drawer sides are grooved to insert a bottom drawer of 7/32" (5.2 mm) (in a 1/4" (6.5 mm) groove)
- Fits with *Blum Tandem* runners, as well as Richelieu and most other brands of undermount soft-closing slides

FORMATS:

Thickness: 5/8" (15.9 mm)
Groove depth: 1/4" (6.5 mm)
Groove width: 1/4" (6.5 mm)



HEIGHT	LENGTH	20 9/16" (522 mm)	22" (559 mm)	30" (762 mm)	36" (914 mm)	42" (1.07 m)	82" (2.08 m)
3 3/8" (86 mm)		1033820916ABNF	-	-	-	1033842ABNF	1033882ABNF 1033882BCWF
4 1/8" (105 mm)		1041820916ABNF	1041822ABNF	1041830ABNF	-	1041842ABNF	1041882ABNF 1041882ABSF 1041882BCWF
5 3/8" (136 mm)		1053820916ABNF	-	-	-	1053842ABNF	1053882BCWF
6 1/4" (159 mm)		1061420916ABNF	-	-	1061436ABNF	1061442ABNF	1061482ABSF 1061482BCWF
7 1/8" (180 mm)		1071820916ABNF	-	-	-	1071842ABNF	1071882ABSF 1071882BCWF
8 1/4" (210 mm)		1081420916ABNF	1081422ABNF	-	-	1081442ABNF	1081482ABSF 1081482BCWF
10 1/4" (260 mm)		10101420916ABNF	-	-	10101436ABNF	10101442ABNF	10101482ABSF 10101482BCWF

PRODUCT CODE DEFINITION

GRADE:

A/B: "A" grade on the outside of drawer "B" grade on the inside of drawer
B/C: "B" grade on the outside of drawer "C" grade on the inside of drawer

CONSTRUCTION:

NF: No finger joint WF: With finger joints SF: Skip finger joints

Please consult our website for more information on grades and product construction.





FULLY ASSEMBLED CUSTOM DRAWERS

FAST & EASY!

Visit us online at: www.richelieu.com

TRY OUR STEP-BY-STEP CONFIGURATOR WITHIN OUR DOORS & DRAWERS SECTION, TO ORDER FULLY ASSEMBLED CUSTOM DRAWERS ACCORDING TO YOUR SPECIFICATIONS!

ONLY A FEW CLICKS ARE REQUIRED TO ORDER YOUR OWN DESIGNS.

DOVETAIL ASSEMBLY



DRAWERUS2017_02-2017
Printed in Canada \$1

