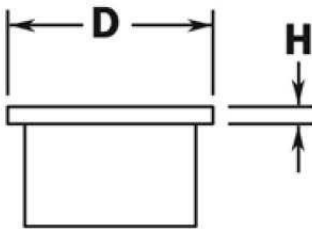


**PART# 048112130 & 048112170 Flush End Cap for 1-1/2" Diameter Tubing**



H	1/8"
D	1-1/2"

MATERIAL & AVAILABLE FINISHES			
	BRASS	304 SST	316 SST
Polished	✓	✓	
Satin	✓	✓	
Clear Coat	✓		

MATERIAL USAGE			
	BRASS	304 SST	316 SST
Indoor	✓	✓	
Outdoor	✓*		
*Uncoated brass only			

<b>INSTALLATION</b>	Designed to mate with 1.5" OD x 0.05" wall tube.
<b>HARDWARE INCLUDED</b>	---
<b>USE TOGETHER WITH</b>	1.5" OD x 0.05" wall tube