



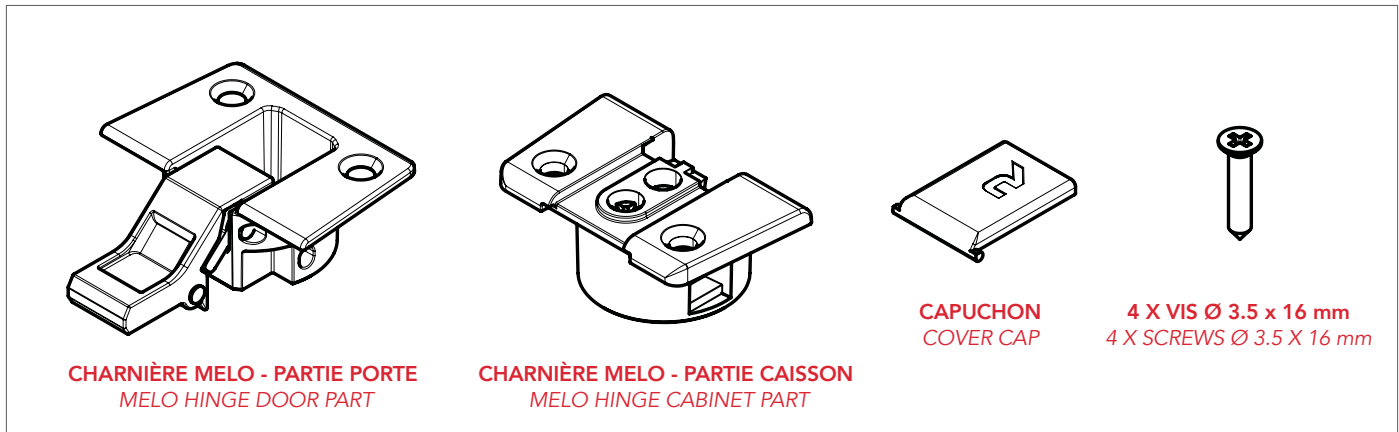
**MELO**

**CHARNIÈRE À RABAT**

*FLAP HINGE*

INSTRUCTIONS D'ASSEMBLAGE ET D'UTILISATION  
*ASSEMBLY & USE INSTRUCTIONS*

## LISTE DES PIÈCES - COMPONENT LIST



## SPÉCIFICATIONS - SPECIFICATIONS

### PRODUITS INCLUS - INCLUDED PRODUCTS

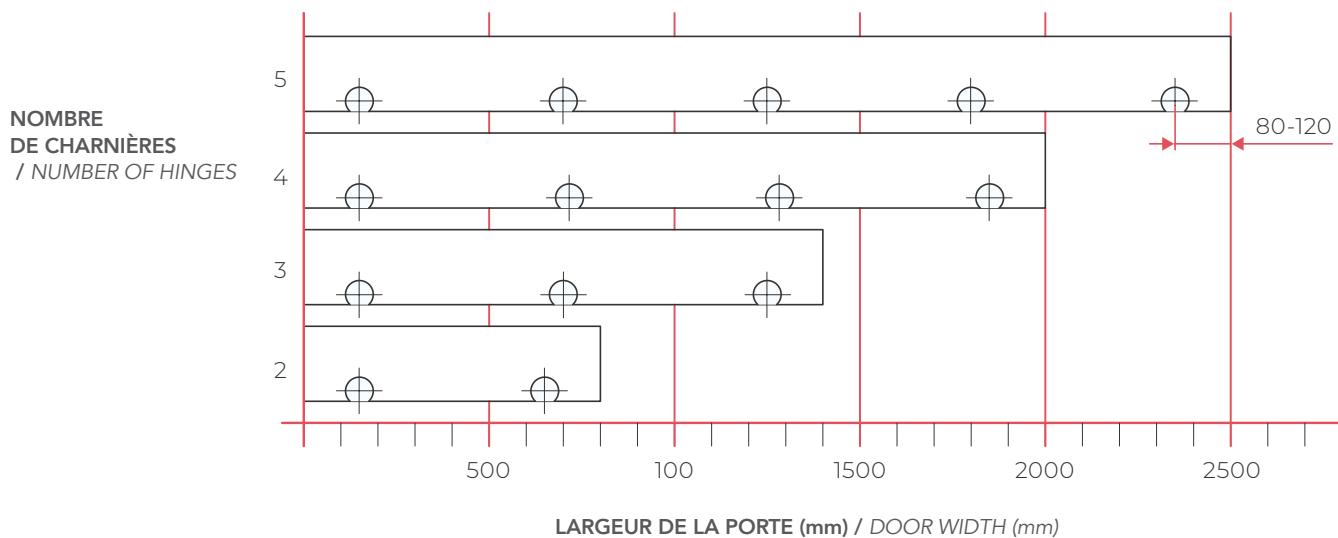
- 1 x Charnière à rabat Melo - Partie Porte  
Melo Slap Hinge - Door Part
- 1 x Charnière à rabat Melo - Partie Caisson  
Melo Slap Hinge - Cabinet Part
- 1 x Capuchon  
Cover Cap
- 4 x Vis avec diamètre Ø 3.5 x 16 mm  
Screws with Ø 3.5 x 16 mm diameter

### FINI - FINISH



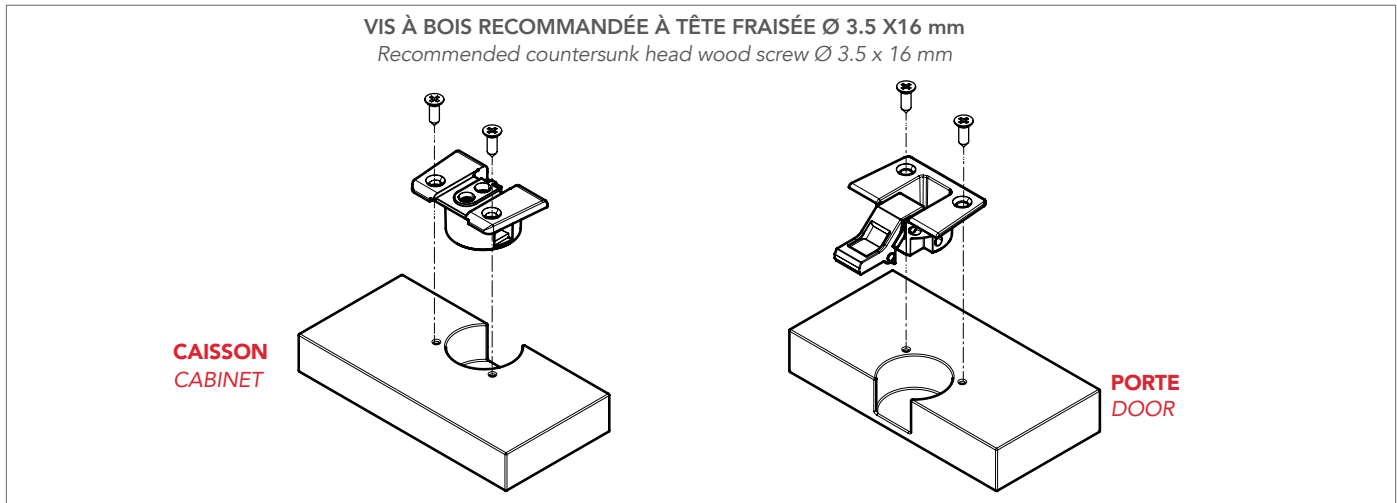
Nickel Satiné Nickel Satin

## CHARTE DE SÉLECTION - SELECTION CHART



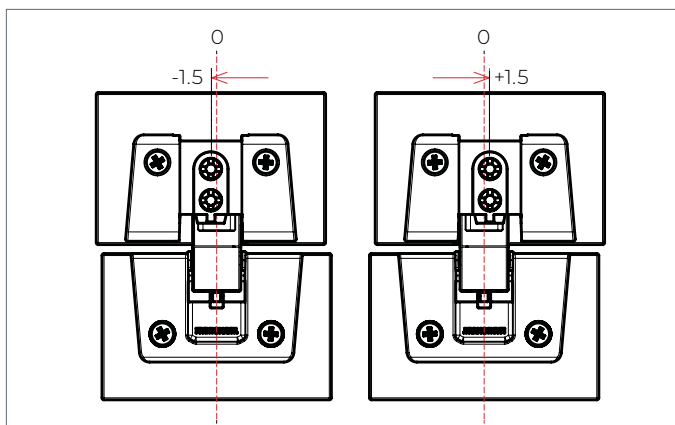
## INSTALLATION

### ÉTAPE 1 / STEP 1



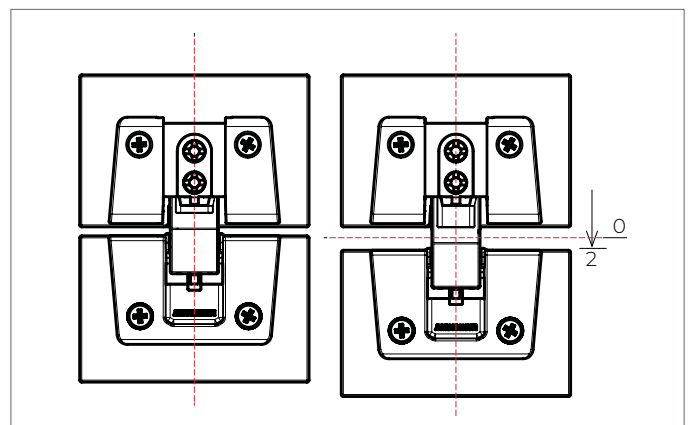
## RÉGLAGES - ADJUSTMENTS

### RÉGLAGE LATÉRAL / LATERAL ADJUSTMENT $0 \pm 1.5$ mm



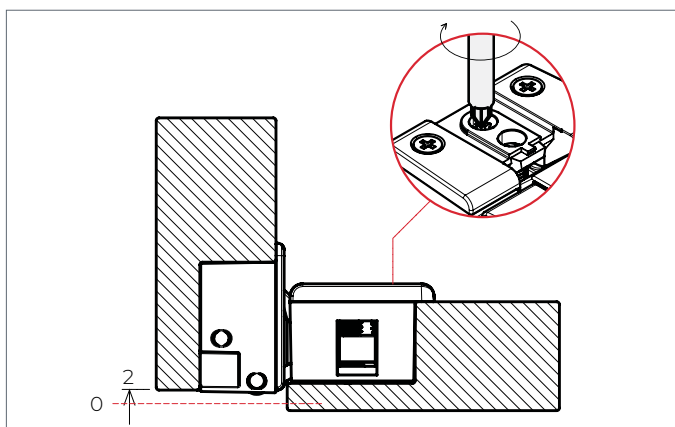
À EFFECTUER AVANT L'OPÉRATION DE LA VIS DE BLOCAGE  
To be made before locking screw operation

### RÉGLAGE EN PROFONDEUR / IN-DEPTH ADJUSTMENT $0 \pm 2$ mm



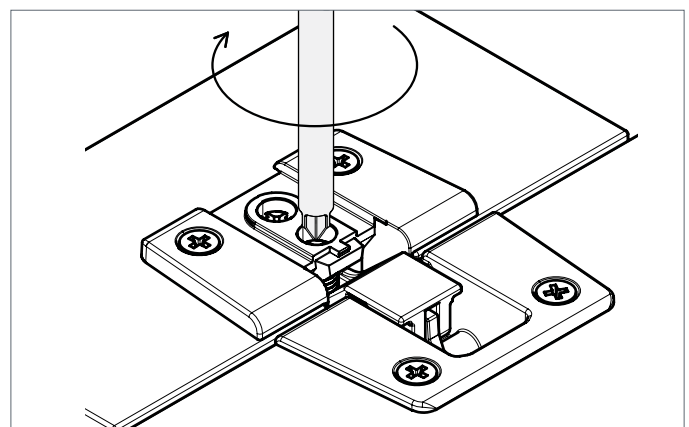
À EFFECTUER AVANT L'OPÉRATION DE LA VIS DE BLOCAGE  
To be made before locking screw operation

### RÉGLAGE VERTICAL / VERTICAL ADJUSTMENT $0 \pm 2$ mm



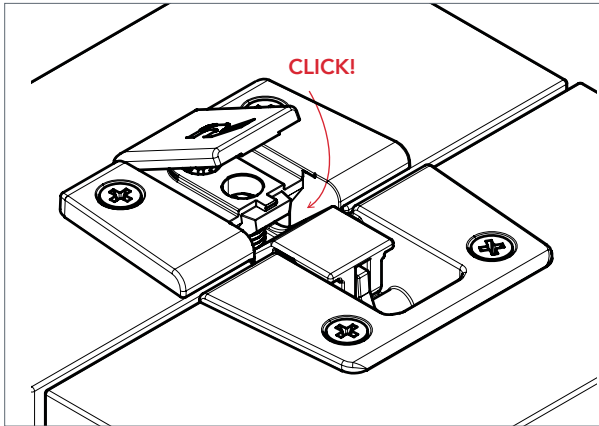
À EFFECTUER AVANT L'OPÉRATION DE LA VIS DE BLOCAGE  
To be made before locking screw operation

### VERROUILLAGE DE LA VIS / LOCKING SCREW

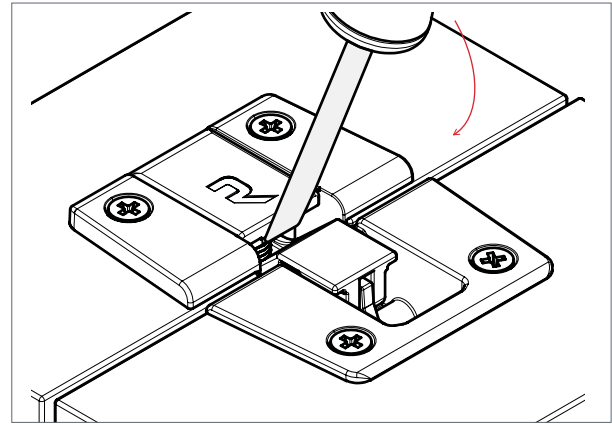


## CONFIGURATION DU CAPUCHON - COVER CAP SETUP

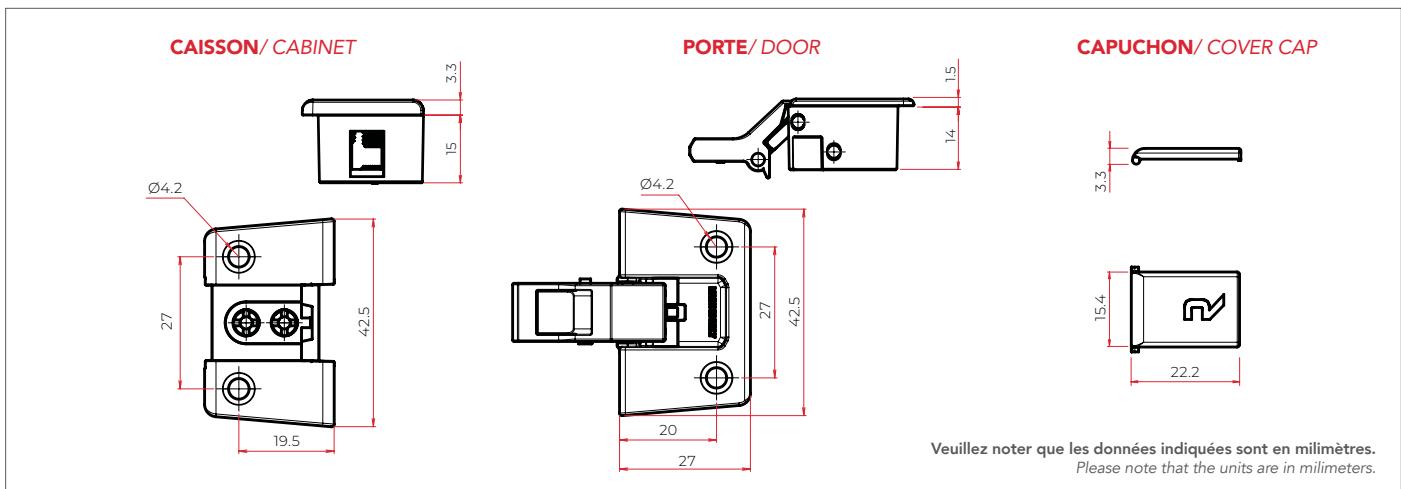
INSERTION DU CAPUCHON / COVER CAP INSERTION



RETRAIT DU CAPUCHON / COVER CAP REMOVAL

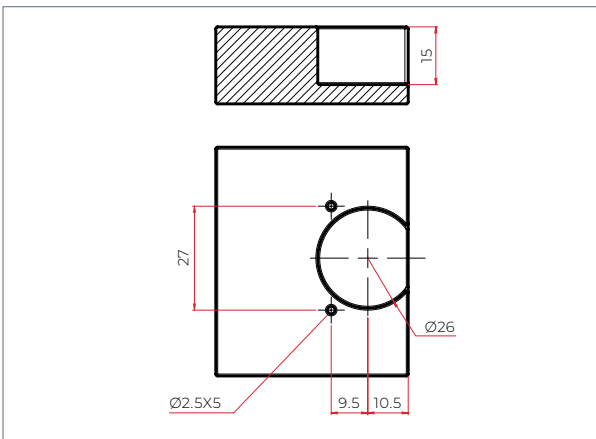


## DIMENSIONS DE LA CHARNIÈRE MELO - MELO OVERALL DIMENSIONS

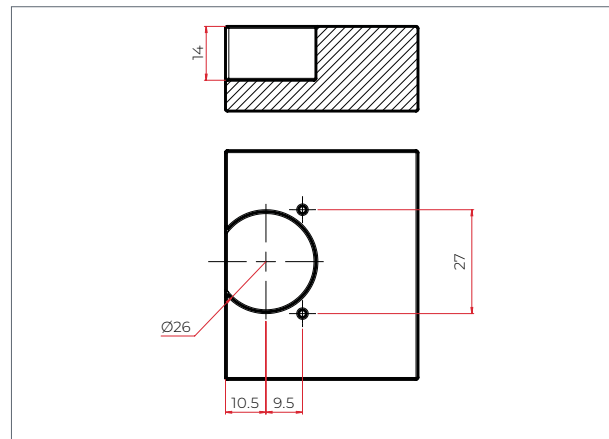


## DIAGRAMME DES DIMENSIONS - DIAGRAM OF DIMENSIONS

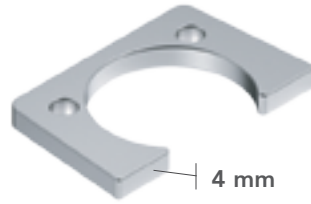
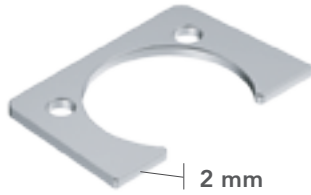
CAISSON/ CABINET



PORTE/ DOOR



## ADAPTEURS D'ESPACEMENT - SPACER ADAPTORS



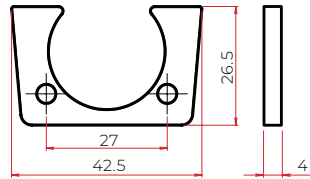
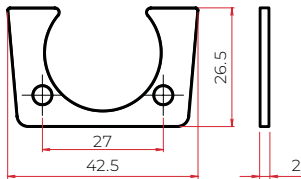
FINI - FINISH



Nickel Satiné Nickel Satin

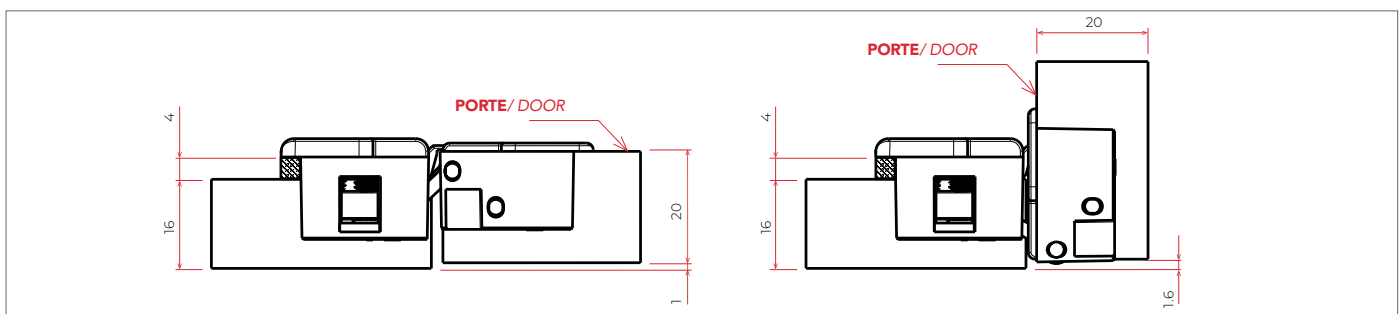
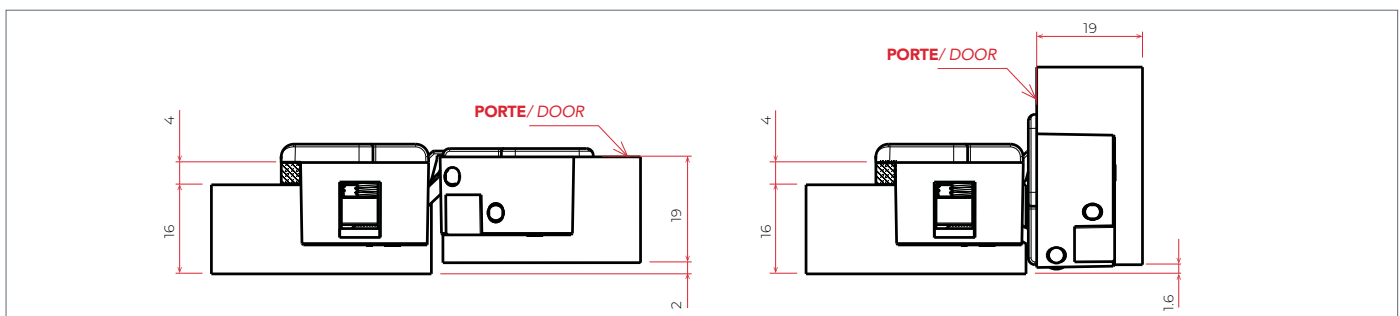
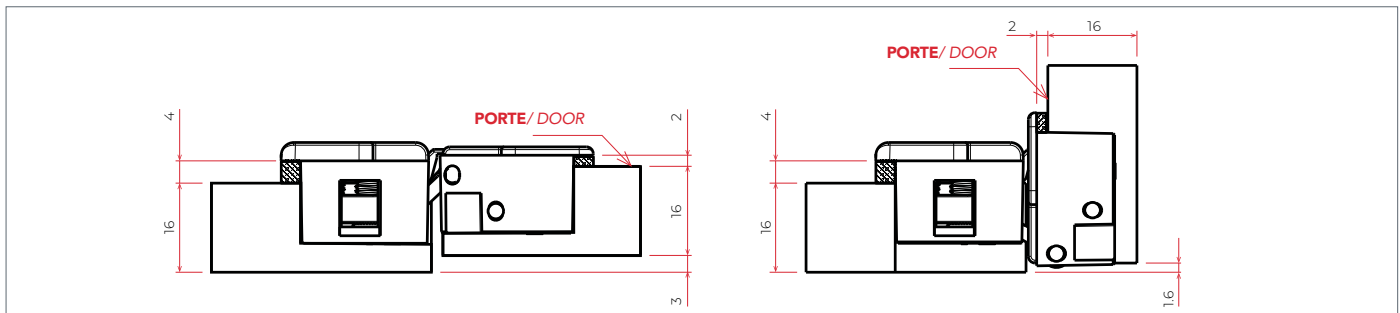
**ADAPTEUR D'ESPACEMENT 2 mm**  
SPACER ADAPTOR 2 mm

**ADAPTEUR D'ESPACEMENT 4 mm**  
SPACER ADAPTOR 4 mm

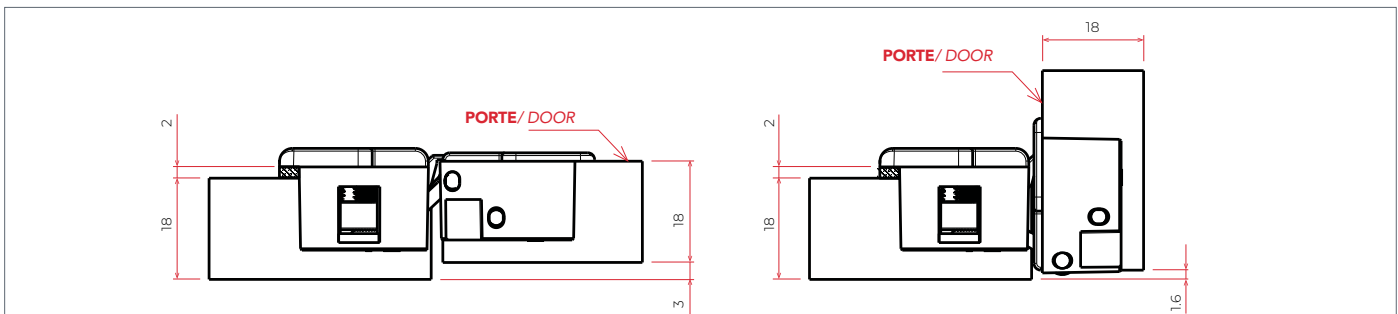
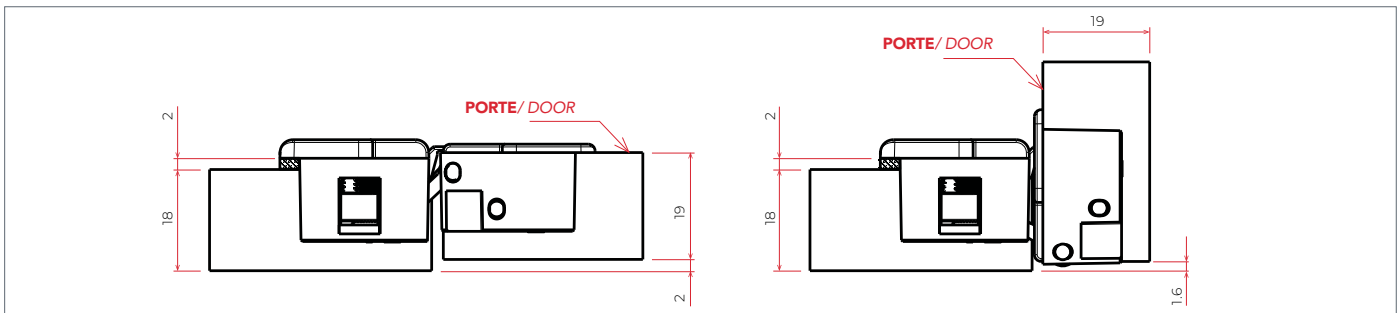
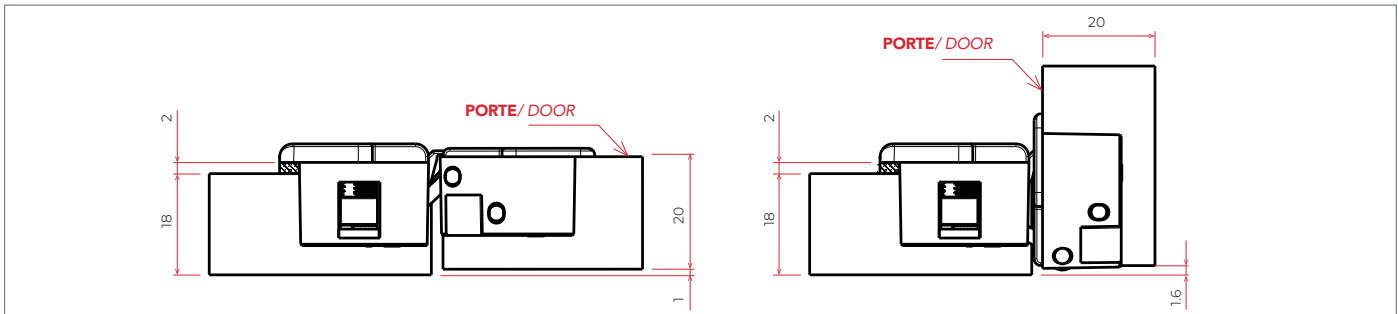


## DIMENSIONS AVEC ESPACEUR - Caisson 16 mm d'épaisseur

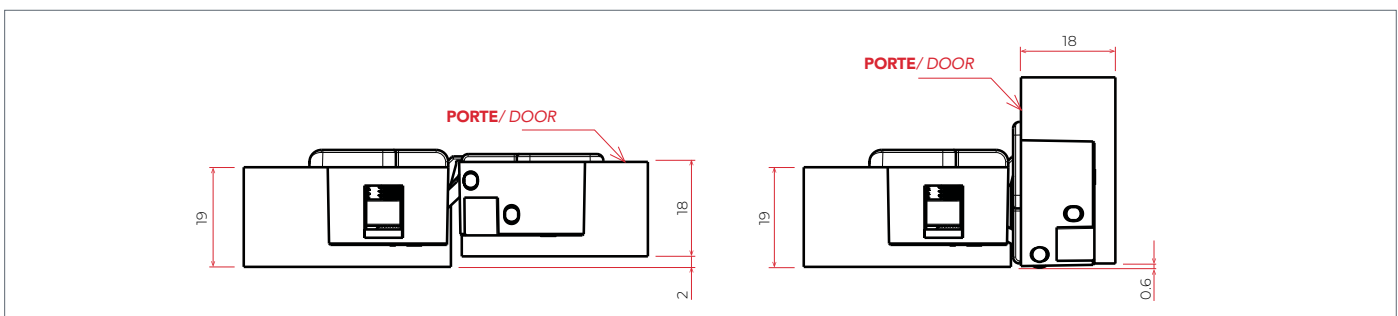
*DIMENSIONS WITH SPACER - 16 mm Cabinet thickness*



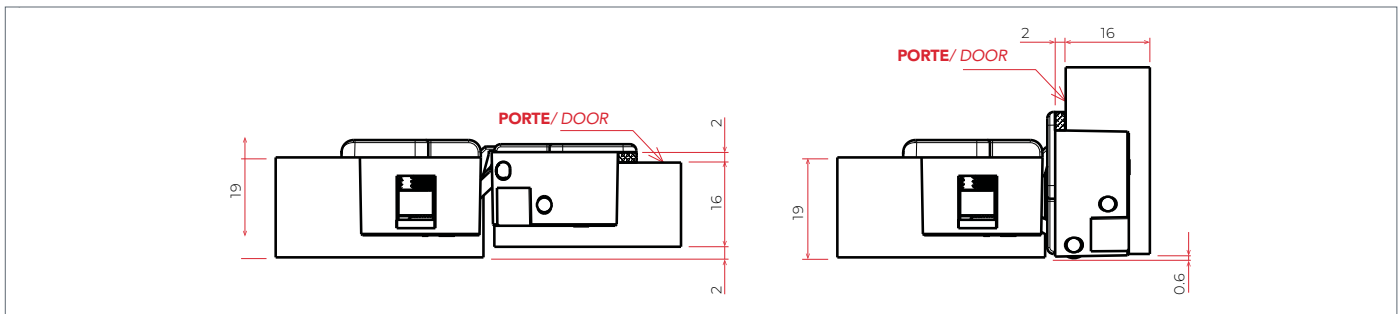
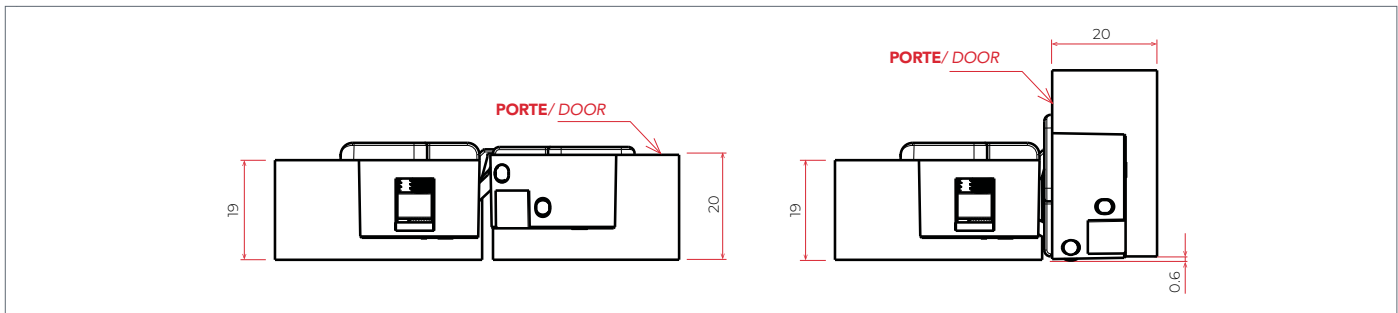
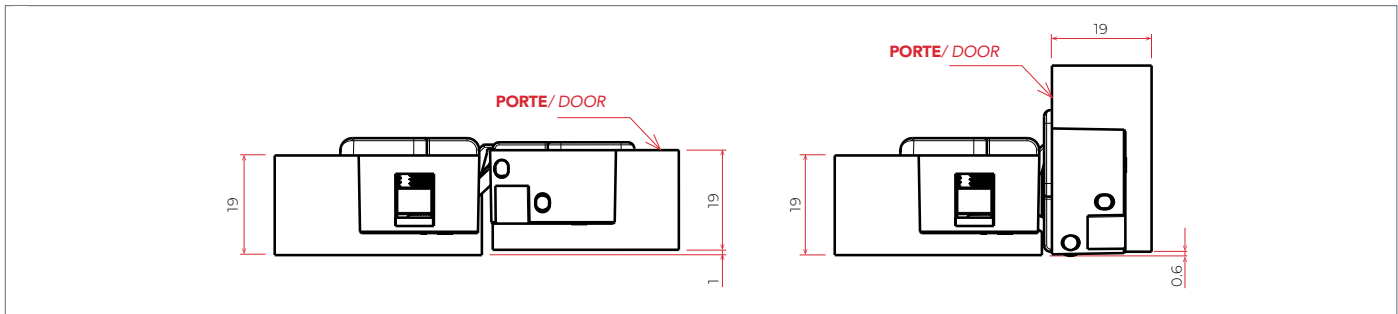
**DIMENSIONS AVEC ESPACEUR - Caisson 18 mm d'épaisseur**  
***DIMENSIONS WITH SPACER - 18 mm Cabinet thickness***



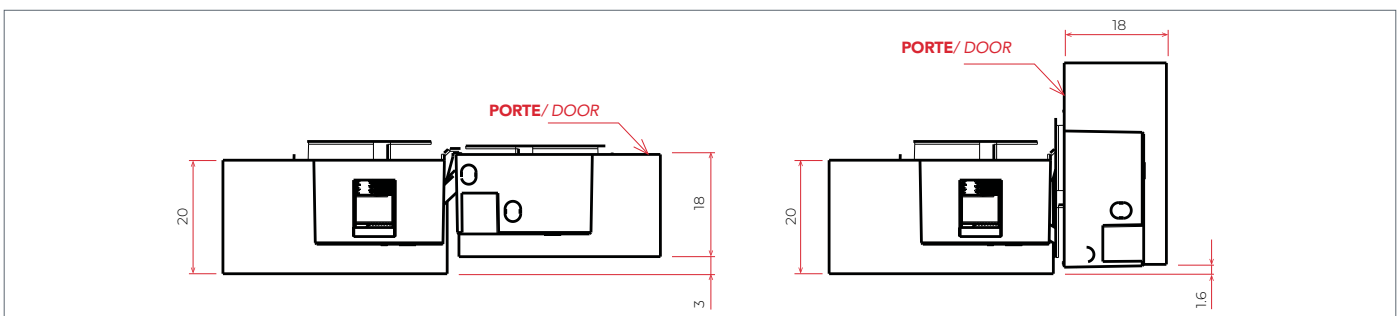
**DIMENSIONS AVEC ESPACEUR - Caisson 19 mm d'épaisseur**  
***DIMENSIONS WITH SPACER - 19 mm Cabinet thickness***



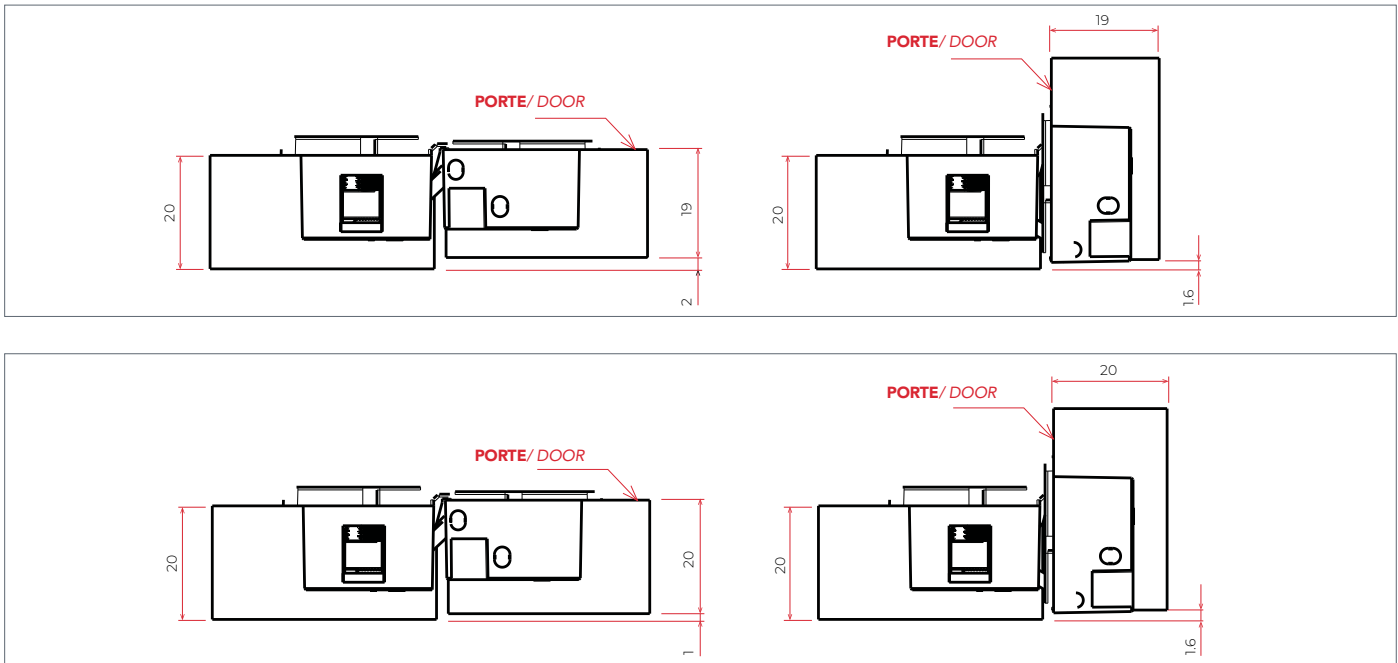
**DIMENSIONS AVEC ESPACEUR - Caisson 19 mm d'épaisseur**  
*DIMENSIONS WITH SPACER - Cabinet thickness 19 mm*



**DIMENSIONS AVEC ESPACEUR - Caisson 20 mm d'épaisseur**  
*DIMENSIONS WITH SPACER - Cabinet thickness 20 mm*

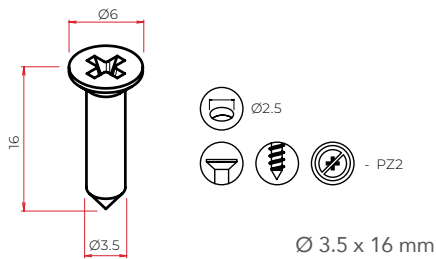


**DIMENSIONS AVEC ESPACEUR - Caisson 20 mm d'épaisseur**  
**DIMENSIONS WITH SPACER - 20 mm Cabinet thickness**

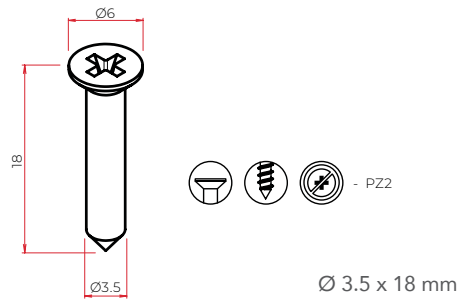


**ACCESSOIRES DE FIXATION (INCLUS) - FIXING ACCESSORIES (INCLUDED)**

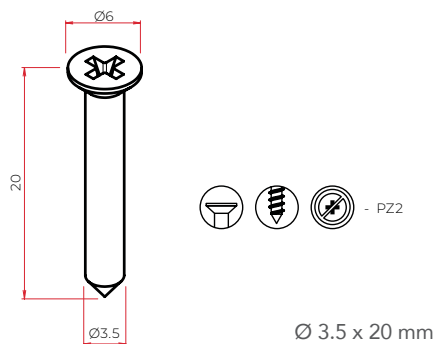
**VIS POUR CHARNIÈRE SANS ADAPTEUR**  
**SCREW FOR HINGE WITHOUT SPACERS**



**VIS POUR CHARNIÈRE AVEC ADAPTEUR 2 mm**  
**SCREW FOR HINGE WITH 2 mm SPACERS**



**VIS POUR CHARNIÈRE AVEC ADAPTEUR 4 mm**  
**SCREW FOR HINGE WITH 4 mm SPACERS**



**TROU DE FORAGE / DRILL HOLE**

