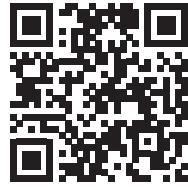


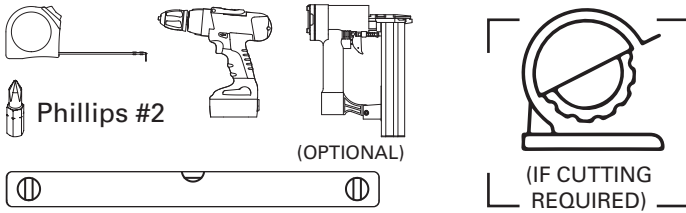
CavitySliders™

Assembly & Installation

CS Cavity Slider™ Kitset Pocket Frame

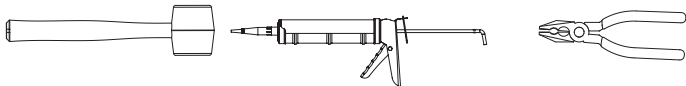


Tools Required - Assembly



#8 screws and appropriate anchors required for installation

Tools Required - Trim Fitting



Safety Gear Required



Parts List

**for CS Ultimate Only*

- Corner Joining Bracket (8)
- Split Jamb Joining Bracket (4)
- Slat Joining Bracket (12) (16)*
- #8 x 33/64" (13mm) Self Drilling Gold Plate (32) (40)*
- #10 x 35/64" (14mm) Self Tapping Zinc Plate (36) (40)*
- 1/4 Crown x 3/8 Leg" 18-Gauge Finish Staple (32)
- Foam Stop (2)
- Bi-Parting Pin
- T-Guide Base
- Block Clip (12)
- Short T-Guide
- Trim Clip (16)
- Long T-Guide
- Setting Block - Used for:
 - Positioning soft close activator
 - Spreading & holding jambs in place



Dimensions below suit 3/4" (19mm) jamb thickness

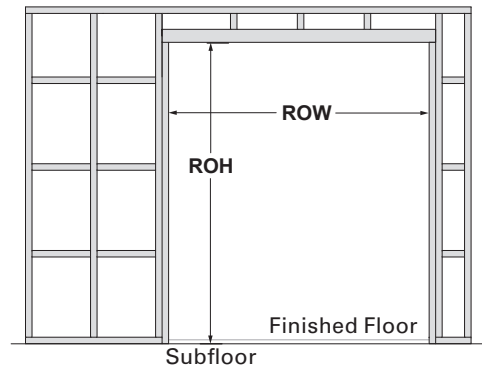
DW = Door Width DH = Door Height

If cutting the Track **C** ensure you do **not** cut the **notched end**

- A** Back Stud x1 DH + 2 7/8" (DH + 74mm)
 ULTIMATE
- B** Split Jamb x2 *Door size: 2'0"x 6'8" to 3'0"x 6'8"*
 DH + 2 11/16" (DH + 68mm)
← 4" (100mm) →
- B** Split Jamb x2 *Door size: 2'0"x 8'0" to 5'0"x 10'0"*
 DH + 2 11/16" (DH + 68mm)
← 5 1/2" (140mm) →
- C** Track x1 DW x 2
 ULTIMATE
- D** Bottom Plate x1 DW - 1/8" (DW - 3mm)
 ULTIMATE
- E** Slat x6 *Door size: 2'0"x 6'8" to 3'0"x 6'8"*
 DW - 4" (DW - 101.5mm)
- E** Slat x6 (x8)* *Door size: 2'0"x 8'0" to 5'0"x 10'0"*
**for 9'0 & 10'0 Ultimate Frame*
 DW - 5 9/16" (DW - 141.5mm)
- F** Top Fixing Block x2 DW + 1/8" (DW + 3mm)
- G** Bottom Fixing Block x2 *Door size: 2'0"x 6'8" to 3'0"x 6'8"*
 DW - 7 1/2" (DW - 190mm)
- G** Bottom Fixing Block x2 *Door size: 2'0"x 8'0" to 4'0"x 8'0"*
 DW - 9" (DW - 230mm)

Rough Opening (RO)

Dimension	inches	mm
RO height (ROH)	DH + 4 1/4"	DH + 108
RO width - Single	(DW x 2) + 2"	(DWx2) + 51
RO width - Bi-Parting	(DW x 4) + 2"	(DWx4) + 51



Assembly

B x 2
2'0" x 8'0" to 4'0" x 8'0"
2'0" x 6'8" to 3'0" x 6'8"

E x 6

C x 4

#8 x 33/64" (13mm) Self Drilling Gold Plated x 8

(or staples)

E x 6

x 12

#8 x 33/64" (13mm) Self Drilling Gold Plated x 24

(or staples)

C **ULTIMATE**

Notched end

#10 x 35/64" (14mm) Self Tapping Zinc Plated x 2

A **ULTIMATE**

D **ULTIMATE**

Slide

G

#10 x 35/64" (14mm) Self Tapping Zinc Plated x 2

B

DO NOT FASTEN!
(until step 9)

Assembly

E

DO NOT FASTEN!

E

DO NOT FASTEN!
(until step 10)

8.

Measure across diagonals for squareness.
Tolerance ± 1/16" (1.5mm)

9.

#10 x 35/64" (14mm) Self Tapping Zinc Plated x 8

10.

90° = 90°

#10 x 35/64" (14mm) Self Tapping Zinc Plated x 6

11.

Slide

F

12.

13.

Offset slats x 2

Repeat steps 3-11 on other side

Assembly

14. Select T-Guide based on flooring thickness 15.

For Mount Plate Positioning refer to the detailed instructions on Page 11

1/4" x 13/16"
5 - 5.5 x 20 - 21mm

15. Select T-Guide based on flooring thickness 15.

T-Guide can be adjusted to minimize clearance in groove in bottom of door

16. Standard M6/M8 (non-SofStop) 17A

#8 screws (not supplied)

Closing jamb optional. See page 10 for suggested detail

17A

Carriages (2)

Insert carriages into track through notched end

SofStop® Single (Soft Close)

17B

a) Single SofStop mechanism fits together as shown above. Push pickup mechanism in direction shown to charge it.

Watch Video:
SofStop Installation
and Trouble Shooting Tips



b) Insert rear carriage

c) Insert cassette

d) Insert front carriage

e) Connect to cassette

SofStop® Twin (Open & Close)

17C

DO NOT DRYWALL THE POCKET UNTIL THE SOFSTOP MECHANISM HAS BEEN INSTALLED & TESTED.

a) The twin SofStop mechanism fits together as shown above. Push front and rear pickup mechanisms in the direction shown to charge.

Watch Video:
SofStop Installation
and Trouble Shooting Tips



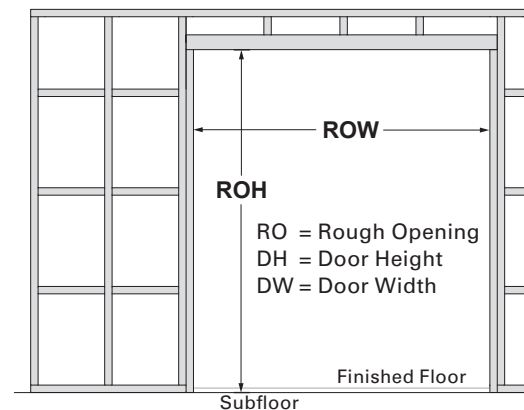
Slide one activator towards end of track

b) Insert one activator into track notch and slide towards end of track. Do not tighten screws - this position is temporary.

M5 pan head machine screw

c) Insert rear carriage, cassette and front carriage using same method as Single Sofstop (17B). Secure carriage to cassette.

Installation



Dimension	inches	mm
RO height (ROH)	DH + 4 1/4"	DH + 108
RO width - Single	(DW x 2) + 2"	(DWx2) + 51
RO width - Bi-Parting	(DW x 4) + 2"	(DWx4) + 51

Hang the door.

1.

Position carriages in track above the door opening. Slide door over T-Guide. Raise door up so that hanger shaft lines up with hole in mounting plate. Depress plunger using wheel hanger shaft head and slide sideways using adjusting wrench until it snaps into locked position. Repeat for the other carriage.

If you do not have your door at time of frame installation, we suggest hanging a dummy door of the same size to ensure the frame is plumb, level & square

2.

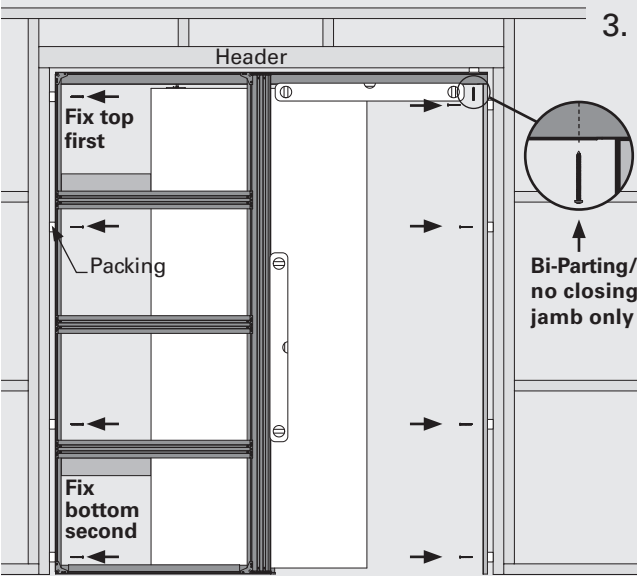
Plumb & straight.
Use a level!

Place unit into rough opening. Plumb split jambs

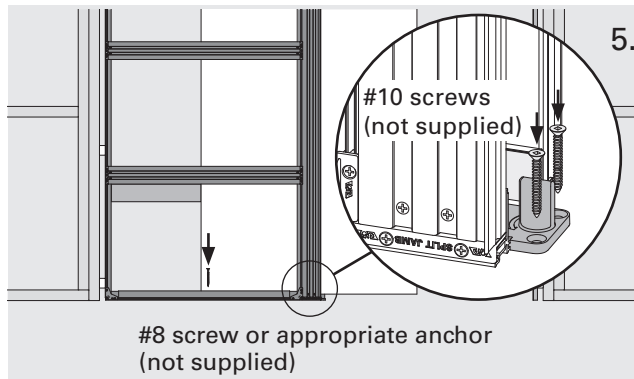
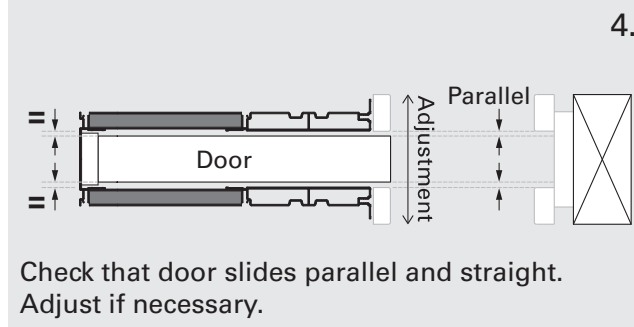
Bi-Parting units only

x 2

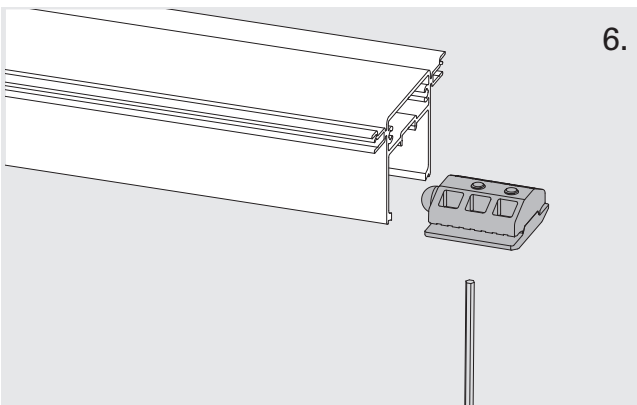
Installation



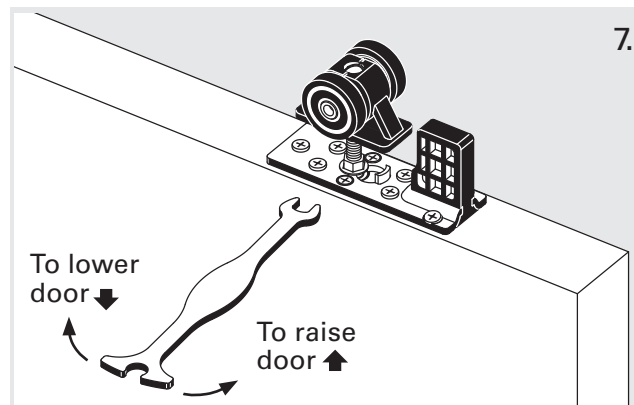
Keep plumb and pack where required. Fix back stud and closing jamb (if using) with #8 countersunk screws (not supplied). Bi-Parting units or units with no closing jamb need to be fixed to the header through the pre drilled hole, otherwise **DO NOT** fix through the track.



Securely fix T-Guide then bottom plate to floor



Adjust track stop position (if using mount plates with stop)



Adjust door for plumb and clearance. Take care not to wind hanger pin up too far on SofStop carriages as it will hit activator in track.

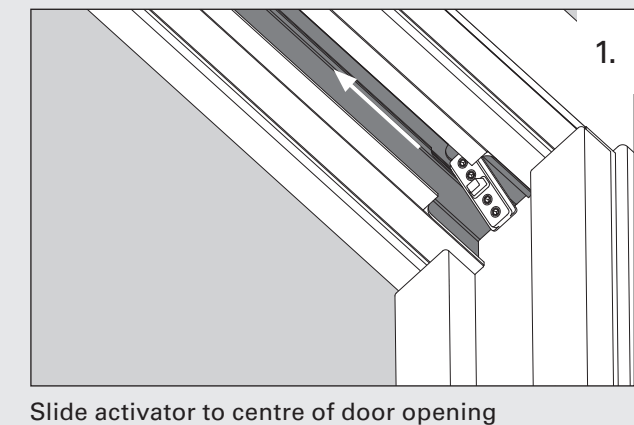
SofStop® Single & Twin

Watch Video: SofStop Installation and Trouble Shooting Tips



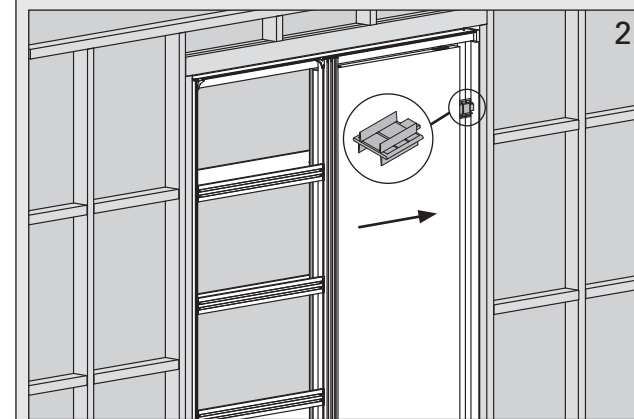
Set front activator position.

Note: Single Soft Close requires one front activator only. Twin Soft Open & Close requires two activators. One should already be in the track above the pocket (Page 5).

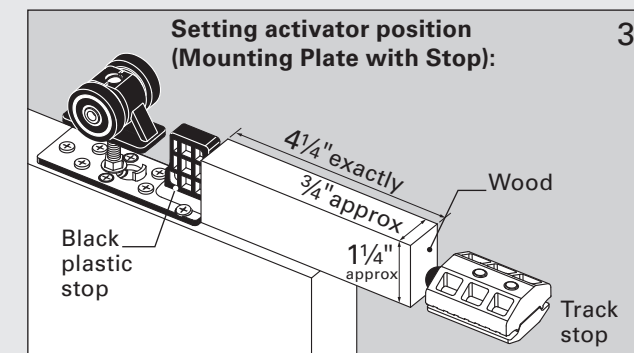


Slide activator to centre of door opening

SofStop® Single & Twin



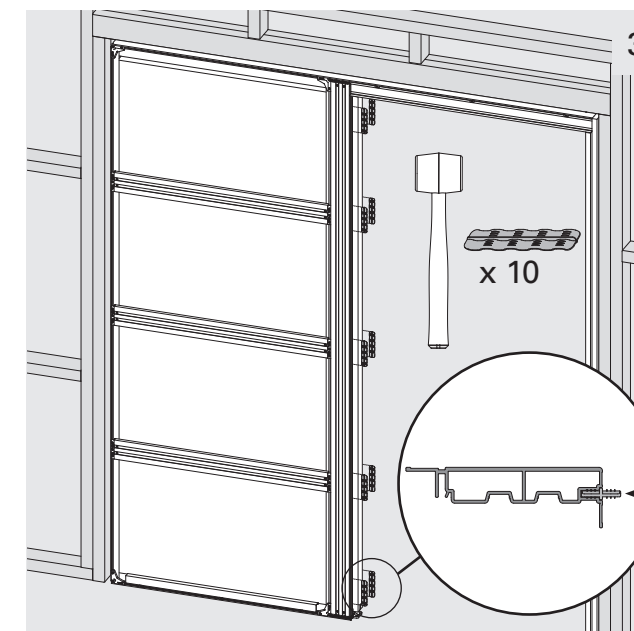
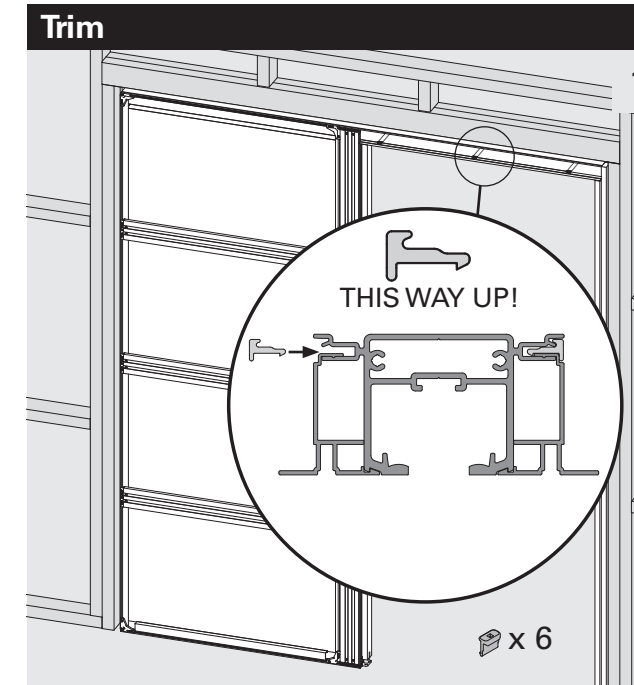
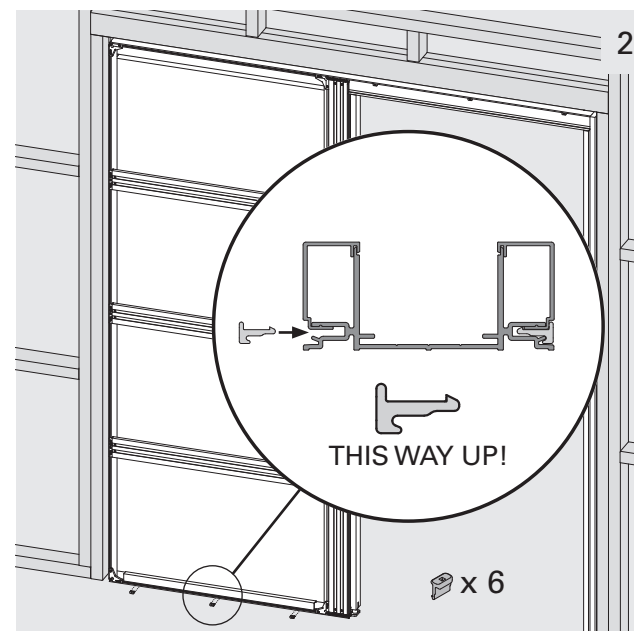
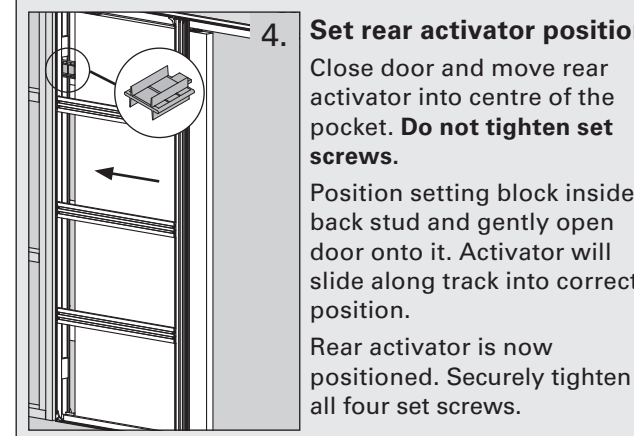
Hold setting block on closing jamb/finished wall and gently close door until wood hits rubber part of track stop. Open door and securely tighten set screws on activator.



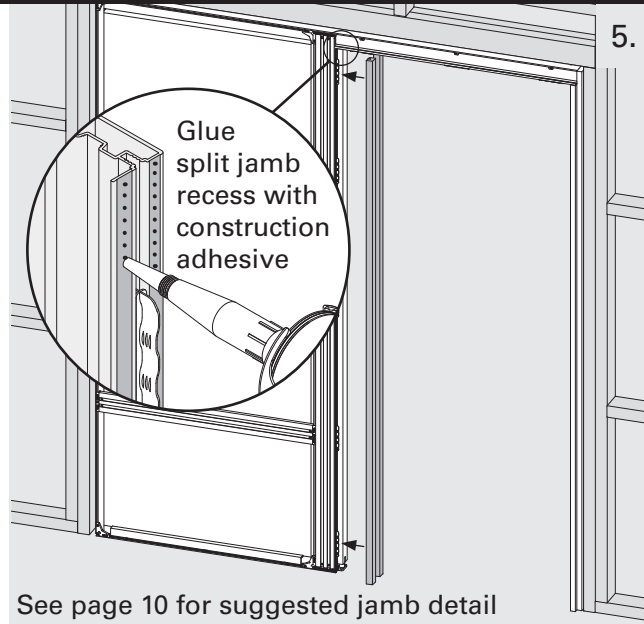
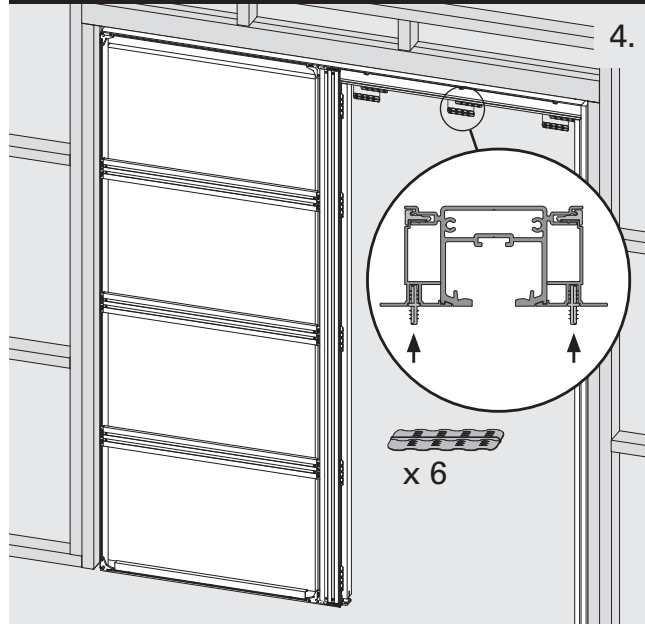
Cut piece of wood to 4-1/4" (108mm) and insert it above door, hard up against black plastic stop on mounting plate. Slowly close door until wood hits rubber part of track stop. Open door and securely tighten set screws on activator.

WARNING: If the door soft closes, but does not come to a stand still on a strike jamb, closing jamb or track stop, you risk breaking the hook on the soft close mechanism. If you use the activator setting block correctly this will be avoided.

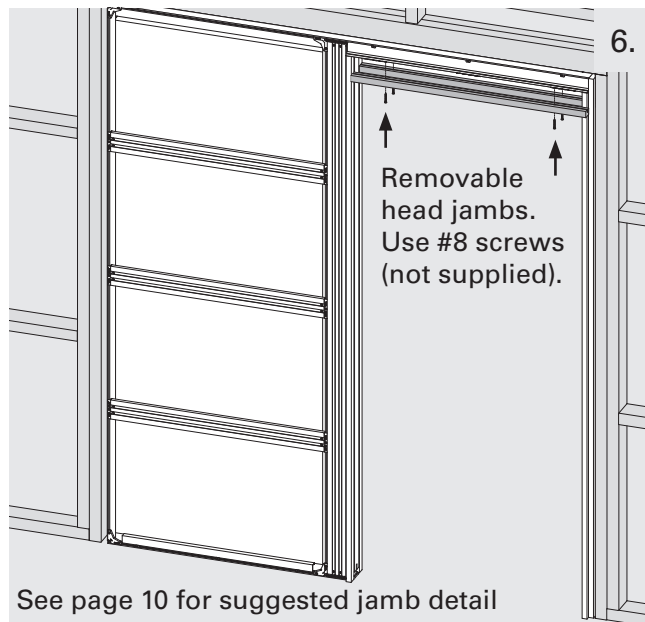
SofStop® Twin ONLY



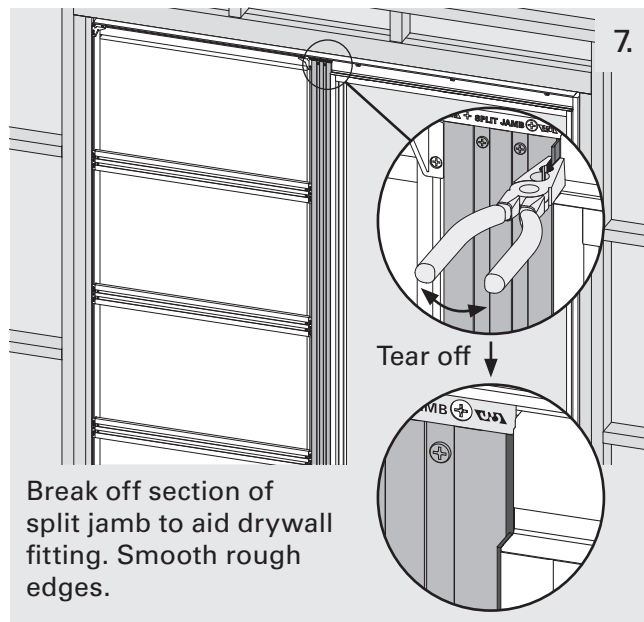
Trim/Finishing



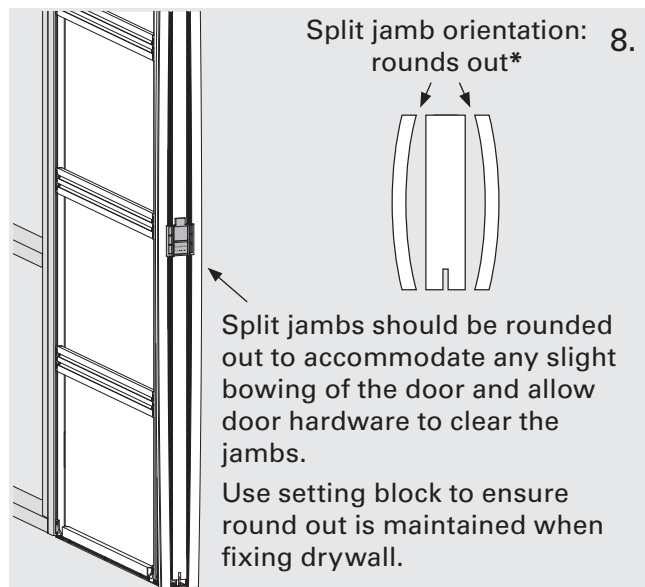
See page 10 for suggested jamb detail



See page 10 for suggested jamb detail

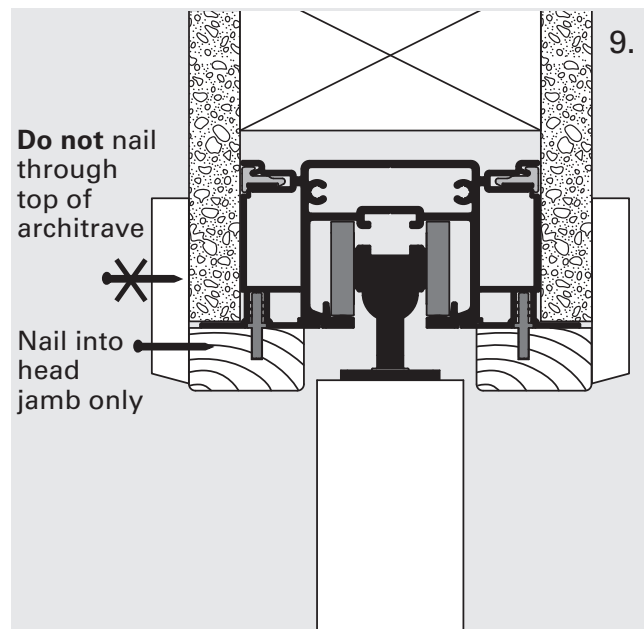


Break off section of split jamb to aid drywall fitting. Smooth rough edges.



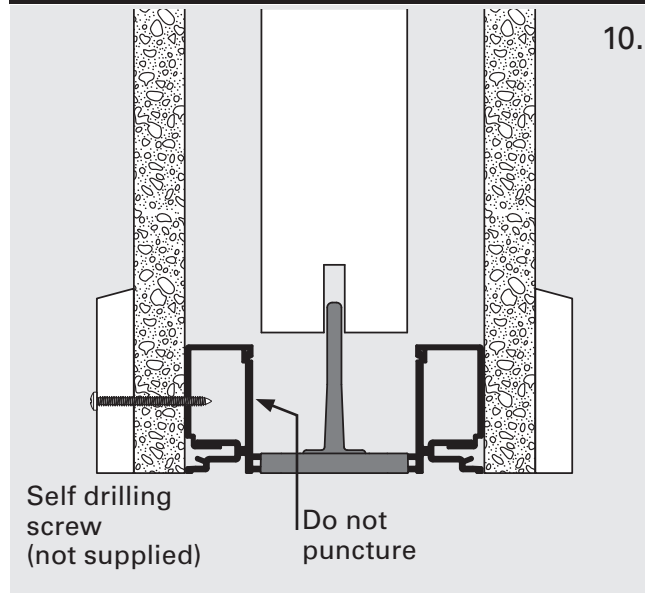
Split jambs should be rounded out to accommodate any slight bowing of the door and allow door hardware to clear the jambs. Use setting block to ensure round out is maintained when fixing drywall.

* Split jambs are bowed on the 2x4 unit only.

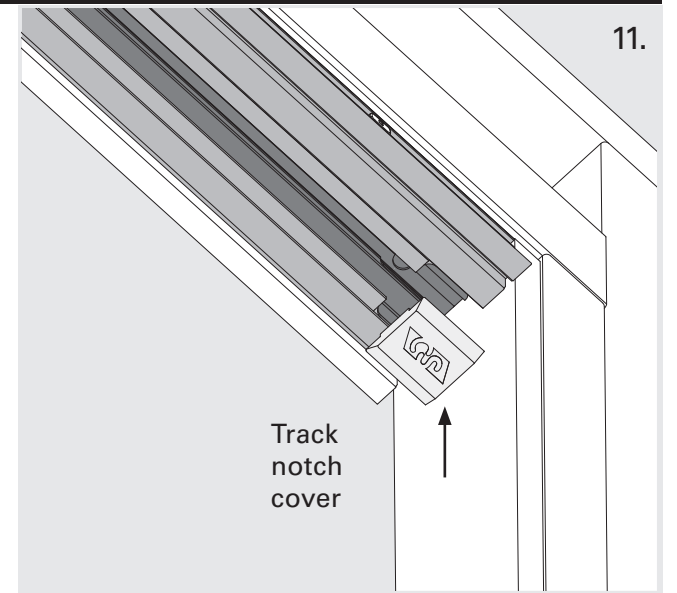


Do not nail through top of architrave. Nail into head jamb only.

Trim/Finishing

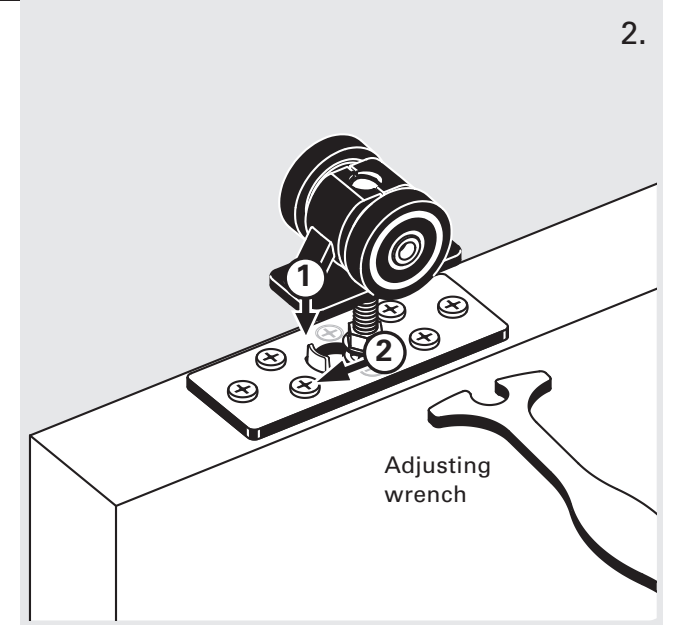
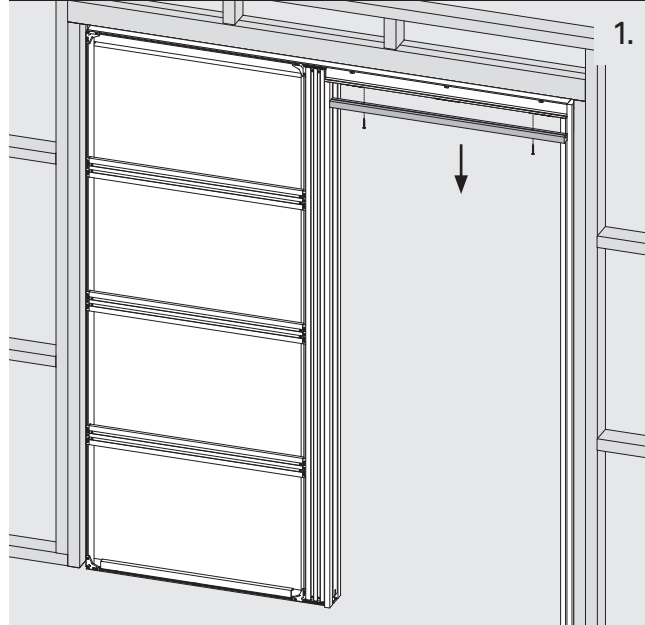


Self drilling screw (not supplied). Do not puncture.

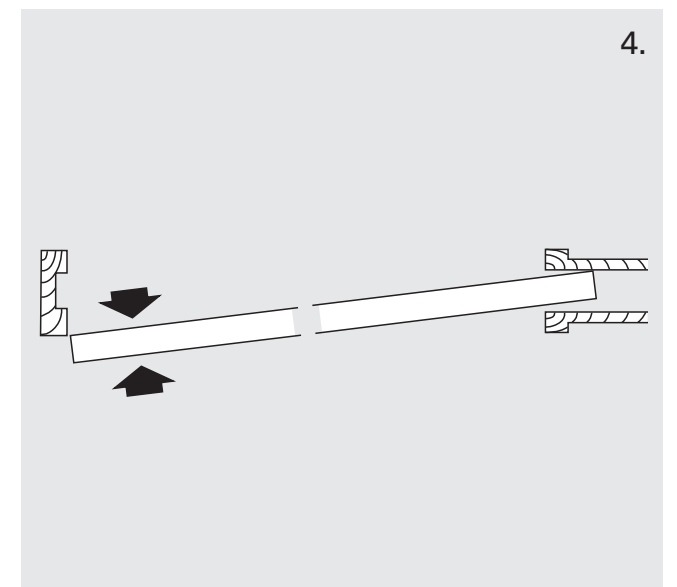
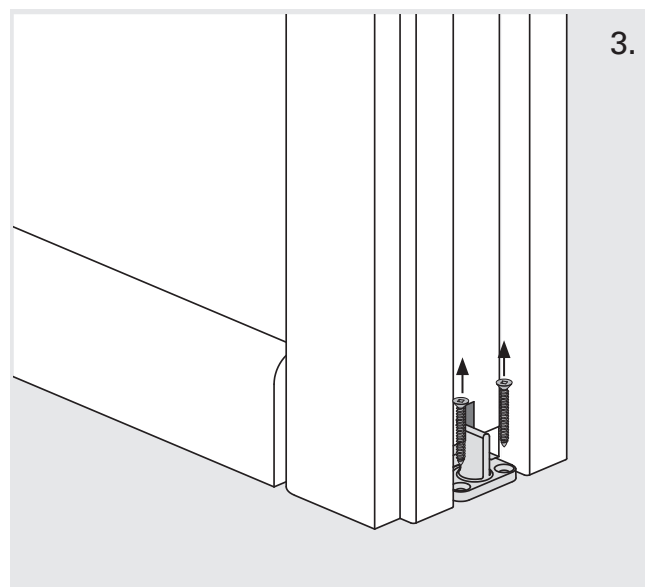


Track notch cover

Removing Door

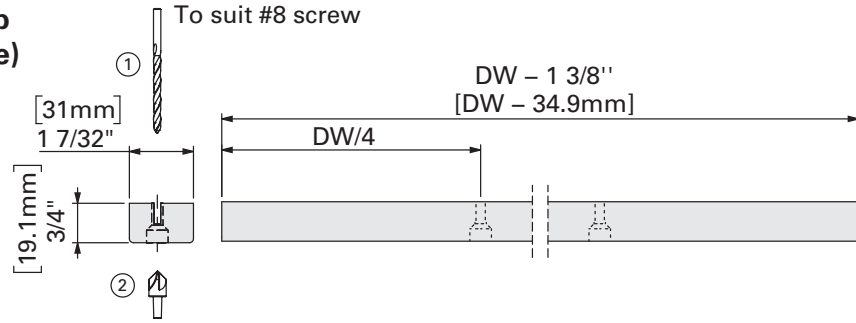


Adjusting wrench



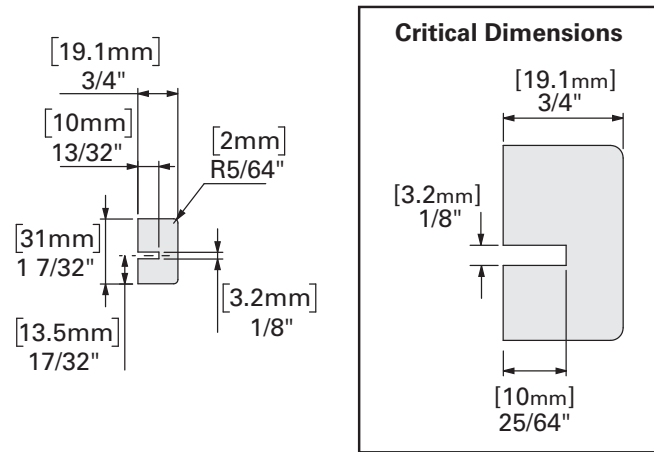
Details for 2x4 frame 1 3/4" doors

Head Jamb (removable)

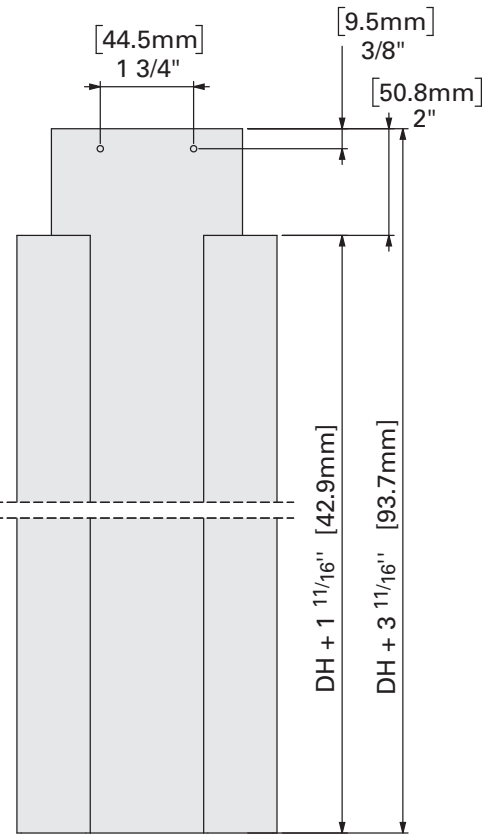
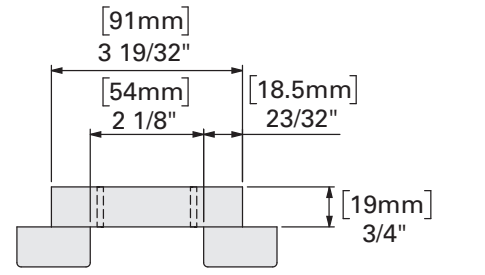


Split Jambs & Head Jambs

(1 3/4" Door with 1/2" Drywall and 2x4 stud)



Closing Jamb



DH + 1 11/16" [42.9mm]

Head Jamb (removable)

Split Jambs

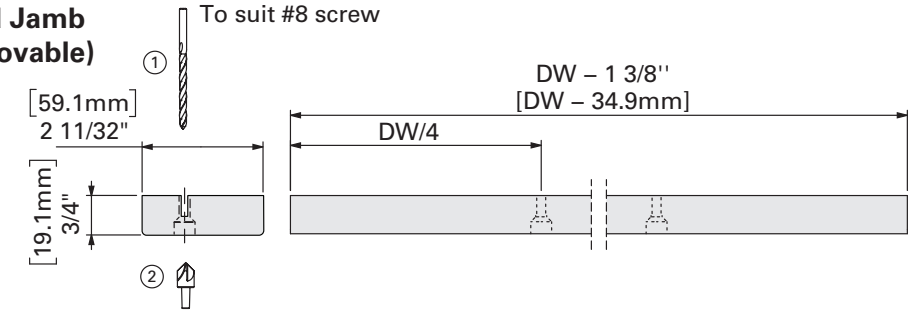
Closing Jamb

DH + 1 11/16" [42.9mm]

DH + 3 11/16" [93.7mm]

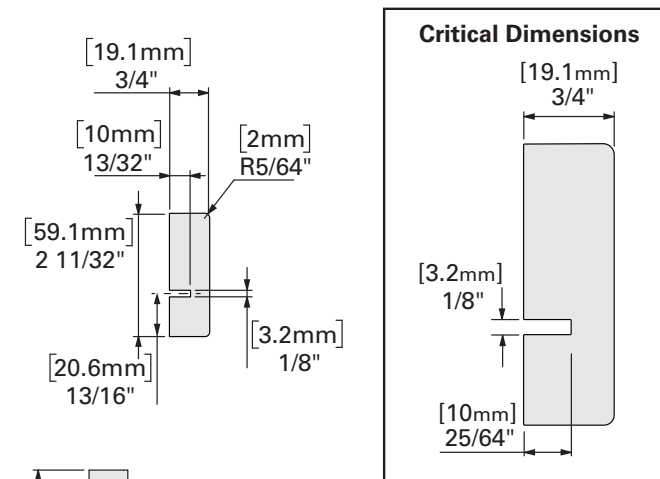
Details for 2x6 frame 1 3/4" doors

Head Jamb (removable)

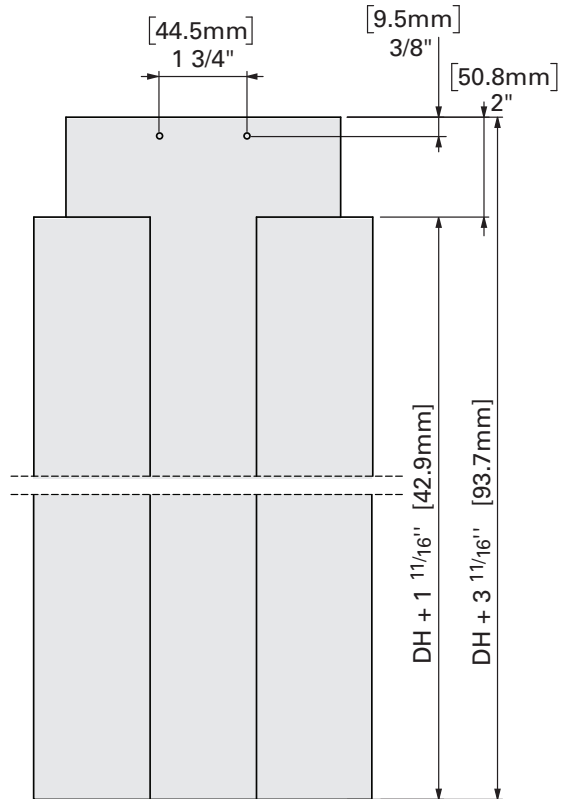
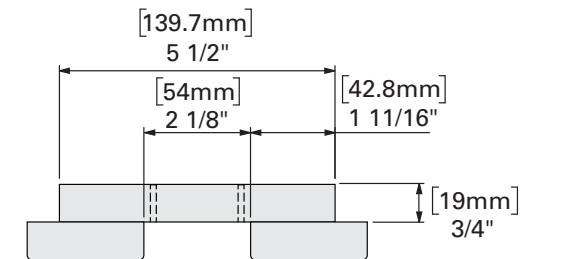


Split Jambs & Head Jambs

(1 3/4" Door with 5/8" Drywall and 2x6 stud)



Closing Jamb



DH + 1 11/16" [42.9mm]

Head Jamb (removable)

Split Jambs

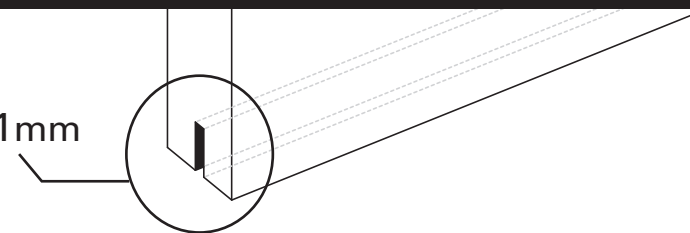
Closing Jamb

DH + 1 11/16" [42.9mm]

DH + 3 11/16" [93.7mm]

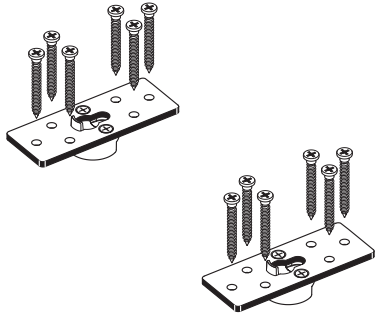
Door Groove Detail

1/4" x 13/16" 5 - 5.5 x 20 - 21mm

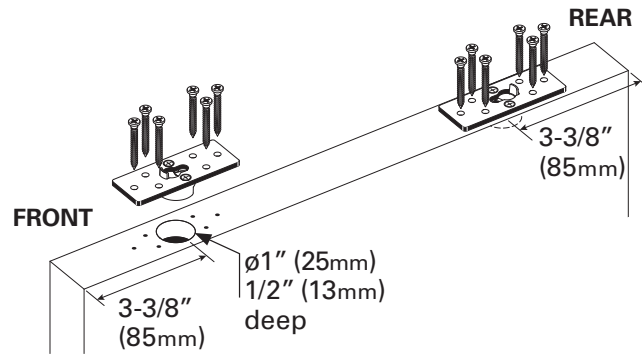


Mount Plate Positioning

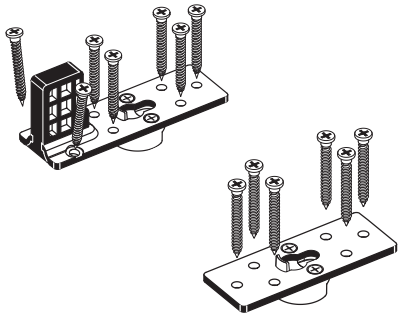
Your Mount Plates:



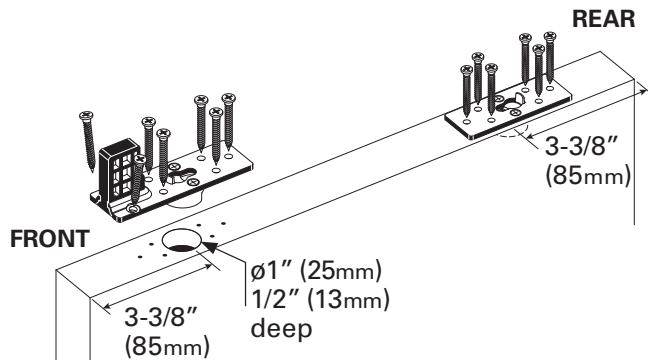
Single Door Mounting Option 1



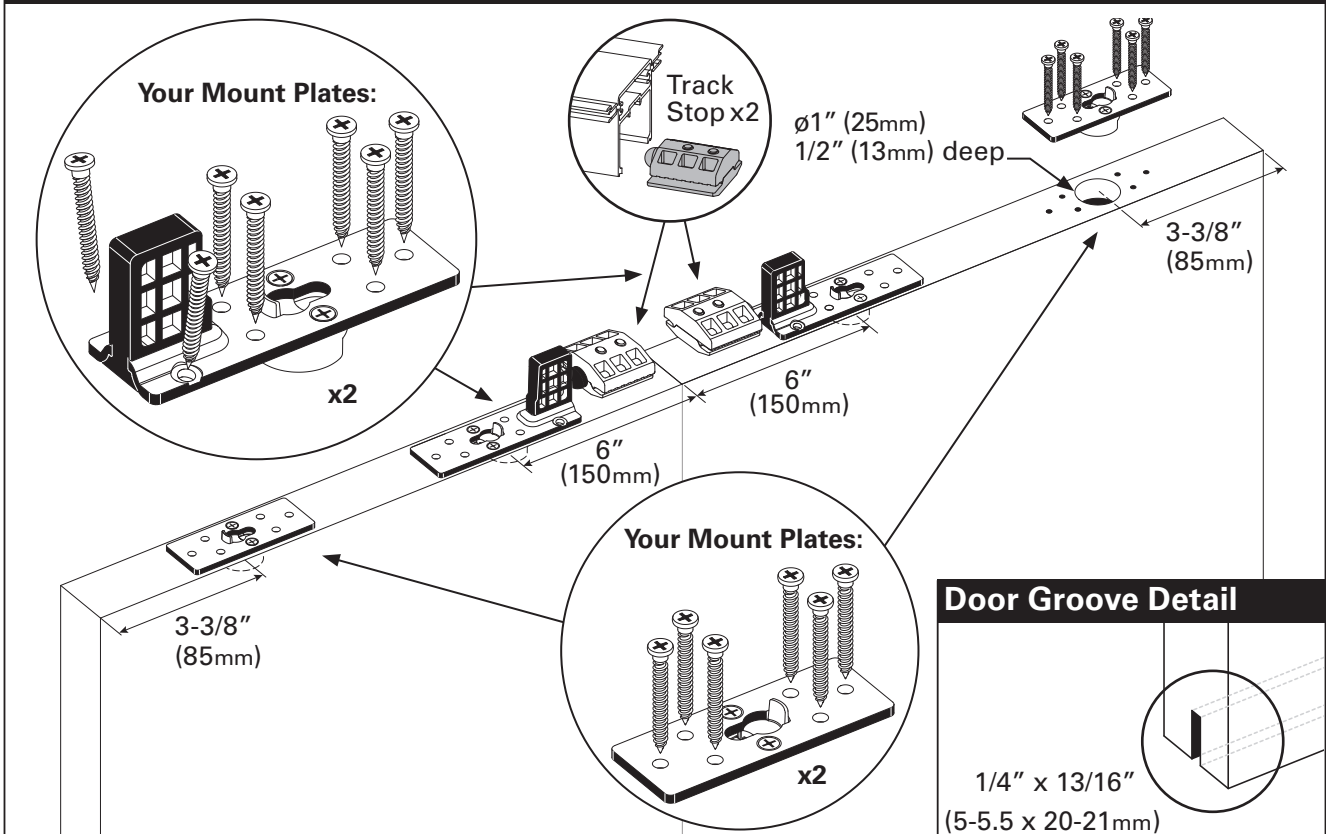
Your Mount Plates:



Single Door Mounting Option 2



Bi-Parting (Double Doors)



© All copyright and other property in this document is reserved by Cavity Sliders USA Inc. Details and specifications are subject to change without notice. Whilst all care is taken to ensure the accuracy of all information, no responsibility will be accepted for any errors or omissions. Drawings are not to scale.
 CS CAVITY SLIDER™ (O.D. 2019). ZG00202 - 04.2023