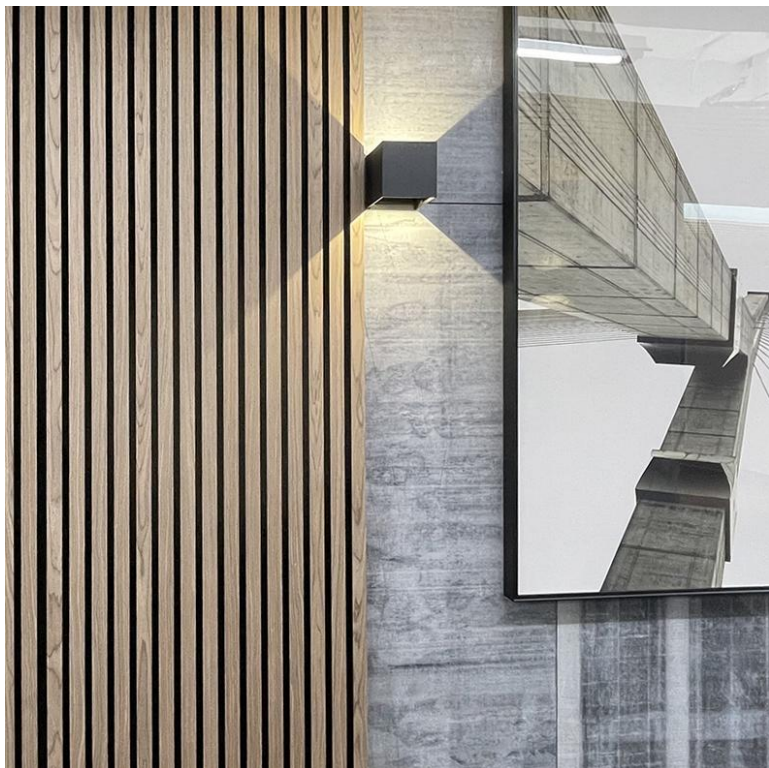


# INSTALLATION INSTRUCTION OF WOOD SLAT PANELS



## Content

Tools to Use: .....	1
The Standard Installation Method: .....	1
Step 1: Preparing the wall or ceiling .....	1
Step 2: Measuring the height and width of the wall or ceiling .....	1
Step 3: Cutting the panels .....	2
The Installation Method for Highest Sound Absorption: .....	4
Step 1: The preparation of wall or ceiling .....	4
Step 2: Installing sound absorbing device .....	4
Step 3: Mounting the panel .....	5
The Simple Installation Method: .....	6
1. Mounting the panel on the wall with glue .....	6
2. Mounting the panel on the wall with screws .....	6
Notes: .....	7

## Tools to Use:



Circular Saw



Electric Screwdriver



Wooden racks



Pencil



Measuring Tape



Stapler



Screw



Keel



Sound Absorption  
Wool



Knife



Structural Adhesive



Structural Adhesive  
Gun

## The Standard Installation Method:

### Step 1: Preparing the wall or ceiling

Make sure the surfaces are clean and dry, without nails and screws.

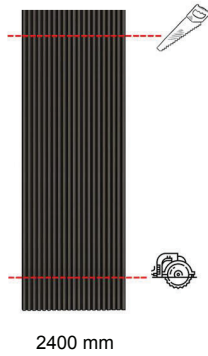


### Step 2: Measuring the height and width of the wall or ceiling

Using the measuring tape to measure.

### Step 3: Cutting the panels

Cutting the panels with a circular saw and a knife to the length and width you need. There are three different sizes of our panels: 2400 mm.



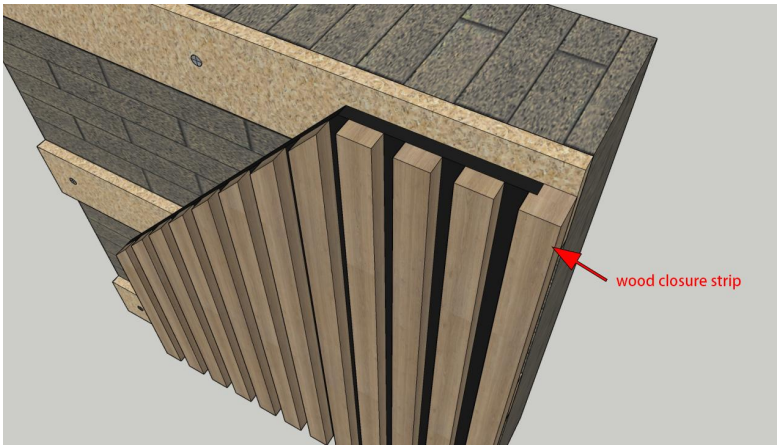
Mounting the panels to the wall and ceiling.



The end result of the installation.

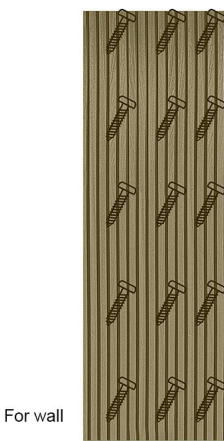


Mounting a wood closure strip at the end of panel for aesthetics if necessary.

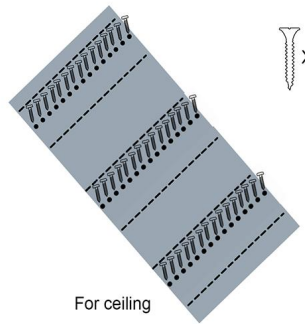


※To place panels on a ceiling, the instructions are the same as on a wall.

Screw the panel to the wall or ceiling: For wall, we recommend 15 screws of 3 screws per row each panel. For ceiling, we strongly recommend additionally strengthening the panel by screwing with screws or nailing with a stapler, making at least 3 rows, totally 45 screws, as indicated in the figure. Thus, we will exclude sagging of the racks.



x15



x45

# The Installation Method for Highest Sound Absorption

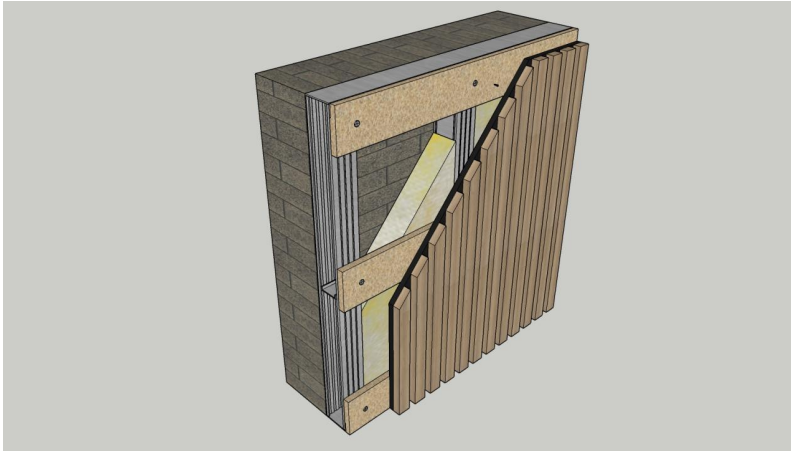
## Absorption:

### Step 1: The preparation of wall or ceiling

Preparing a clean and dry wall or ceiling.

### Step 2: Installing sound absorbing device

We recommend installing the keel initially, then the sound absorption wool, and then the panels. With this combination, you will get the highest sound absorption. The combination of keel, sound absorption wool, wooden racks and panels as the figure shows.

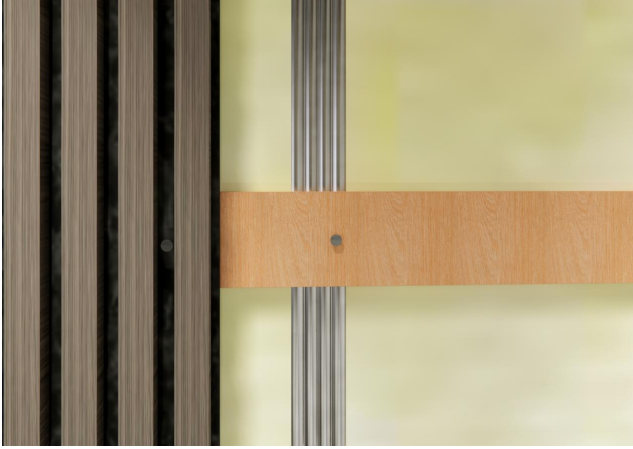


Inserting the sound absorption wool between the keel and wooden racks.



### Step 3: Mounting the panel

Using the electric screwdriver to screw through the black felt into the wooden racks.



When assembling in continuation to each other, please note that the felt side of the one panel is seamless with the slat side of the following panel.



The wall and ceiling are fully installed now.

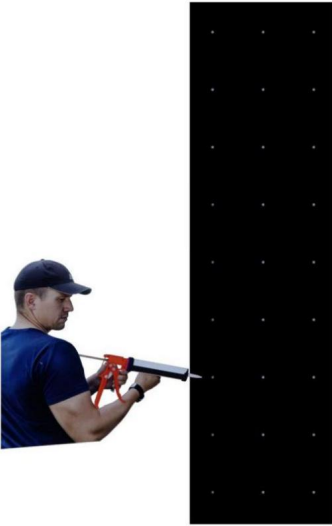


## The Simple Installation Method:

Our slat panels can also be mounted directly on the wall with screws or glue.

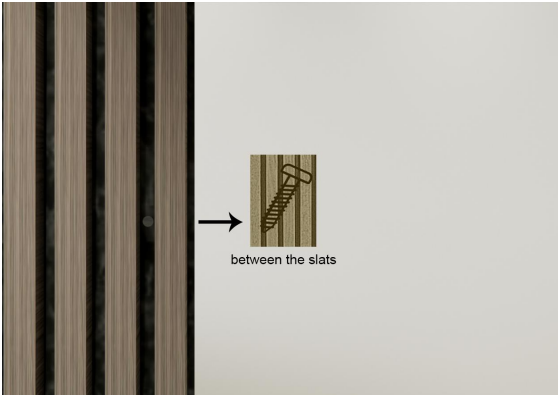
### 1. Mounting the panel on the wall with glue.

Firstly, clean the wall surface and make sure it without nails and screws, then measure the wall and panel, and then add structural adhesive to the backing felt of the panel. Finally, mounting the panel on the wall.



### 2. Mounting the panel on the wall with screws.

Firstly, make sure the wall surface is clean and dry, then measure the size of the panel you need, and then mark where the screws will go through. Lastly, screws the panel on the wall directly.



## Notes:

1. Considering to the material of wall, it would be difficult to screw the panel directly on the wall if the wall is concrete or brick. It need to add an additional layer like racks for solidity.
2. For safety, we do not recommend installing the panels on the ceiling with glue. The uneven glue or poor quality of glue will cause the panel to warp.
3. The above installation methods are for reference only, please refer to the actual operation, our company reserves the right of final explanation.

**If you have any questions about the installation, please do not hesitate to contact us and we will be happy to help you.**

