

CASCADE SERIES™

DISC TUMBLER CAM LOCKS

Novel design to reduce
installation time and
save money!



CASCADE SERIES™ 953 - 954 - 955 - 960 - 961



US19
MATTE BLACK

US14A
BRIGHT NICKEL

ADVANTAGE AND BENEFITS

- Engineered to ensure and maintain industry-leading ship times.
- Customizable options available, custom keys order can ship in 1 to 3 days.
- Keys tested to meet ANSI/BHMA standards through two cycle tests, performed over 20,000 key insertion and removal cycles
- Available in 2 finishes (matte black and bright nickel).

CASCADE SERIES™ – DISC TUMBLER CAM LOCKS

SPECIFICATIONS

- **Keying:** Will key together with CompX National disc tumbler locks
- **Assembly:** Ships with body and cylinder assembled for fast and easy installation
- **ANSI/BHMA:** Passed ANSI/BHMA Grade 2 cycle tests: 20,000 cycles, including key insertion and removal [E07262]
- **Body:** Zinc die cast
- **Cylinder:** Zinc die cast, 5 disc tumblers
- **Standard function:** Key removable in locked or unlocked position
- **Cams:** Ships with one straight and one offset cam
- **Spur Washer:** Ships with anti-rotation, eyelet spur washer (which can be locked into place for a more secure mounting)
- **Finish:** 14A (bright nickel) or US19 (matte black)
- **Packaged:** Packed 15 per box or 120 per case

KEYING INFORMATION

- **Keyway:** Cascade Series™ (equivalent to National 5-disc system)
- **Keys:** Includes 2 keys per lock
- **Stock keying:** KD (120 KD codes), MKKD (120 MKKD codes)
- **Stock KA#:** C346A, C390A, C413A, C415A, C420A, C452A

KEYING OPTIONS

- **KA key codes:** C346A, C390A, C413A, C415A, C420A, C452A
- **KD (120 KD codes), MKKD (120 MKKD codes)**

SERIES AND DIMENSIONS

954

5/8" (15.9 mm) max.
material thickness



15/16" (23.8 mm)

953

7/8" (22.2 mm) max.
material thickness



1 3/16" (30.2 mm)

955

1 1/8" (28.6 mm) max.
material thickness



1 7/16" (36.5 mm)

960

1 7/16" (36.5 mm) max.
material thickness



1 3/4" (44.5 mm)

961

1 13/16" (46 mm) max.
material thickness



2" (50.8 mm)



BRIGHT NICKEL



MATTE BLACK

CASCADE SERIES™ – DISC TUMBLER CAM LOCKS

Series No.	Key Code (Bright Nickel)	Key Code (Matte Black)	Key Type	Cylinder Length	Max. Material Thickness
954	OL954KD14A	OL954KDUS19	Keyed Different	15/16" (23.8 mm)	5/8" (15.9 mm)
	OL95434614A	OL954346US19	Keyed Alike #C346A		
	OL95439014A	OL954390US19	Keyed Alike #C390A		
	OL95441314A	OL954413US19	Keyed Alike #C413A		
	OL95441514A	OL954415US19	Keyed Alike #C415A		
	OL95442014A	OL954420US19	Keyed Alike #C420A		
	OL95445214A	OL954452US19	Keyed Alike #C452A		
	OL954MKKD14A	OL954MKKDUS19	Master Key / Keyed Different		
	OL954MKKA14A	OL954MKKAUS19	Master Key / Keyed Alike		
953	OL953KD14A	OL953KDUS19	Keyed Different	1 3/16" (30.2 mm)	7/8" (22.2 mm)
	OL95334614A	OL953346US19	Keyed Alike #C346A		
	OL95339014A	OL953390US19	Keyed Alike #C390A		
	OL95341314A	OL953413US19	Keyed Alike #C413A		
	OL95341514A	OL953415US19	Keyed Alike #C415A		
	OL95342014A	OL953420US19	Keyed Alike #C420A		
	OL95345214A	OL953452US19	Keyed Alike #C452A		
	OL953MKKD14A	OL953MKKDUS19	Master Key / Keyed Different		
	OL953MKKD14A	OL953MKKAUS19	Master Key / Keyed Alike		
955	OL955KD14A	OL955KDUS19	Keyed Different	1 7/16" (36.5 mm)	1 1/8" (28.6 mm)
	OL95534614A	OL955346US19	Keyed Alike #C346A		
	OL95539014A	OL955390US19	Keyed Alike #C390A		
	OL95541314A	OL955413US19	Keyed Alike #C413A		
	OL95541514A	OL955415US19	Keyed Alike #C415A		
	OL95542014A	OL955420US19	Keyed Alike #C420A		
	OL95545214A	OL955452US19	Keyed Alike #C452A		
	OL955MKKD14A	OL955MKKDUS19	Master Key / Keyed Different		
	OL955MKKA14A	OL955MKKAUS19	Master Key / Keyed Alike		
960	OL960KD14A	OL960KDUS19	Keyed Different	1 3/4" (44.5 mm)	1 7/16" (36.5 mm)
	OL96034614A	OL960346US19	Keyed Alike #C346A		
	OL96039014A	OL960390US19	Keyed Alike #C390A		
	OL96041314A	OL960413US19	Keyed Alike #C413A		
	OL96041514A	OL960415US19	Keyed Alike #C415A		
	OL96042014A	OL960420US19	Keyed Alike #C420A		
	OL96045214A	OL960452US19	Keyed Alike #C452A		
	OL960MKKD14A	OL960MKKDUS19	Master Key / Keyed Different		
	OL960MKKA14A	OL960MKKAUS19	Master Key / Keyed Alike		
961	OL961KD14A	OL961KDUS19	Keyed Different	2" (50.8 mm)	1 13/16" (44.5 mm)
	OL96134614A	OL961346US19	Keyed Alike #C346A		
	OL96139014A	OL961390US19	Keyed Alike #C390A		
	OL96141314A	OL961413US19	Keyed Alike #C413A		
	OL96141514A	OL961415US19	Keyed Alike #C415A		
	OL96142014A	OL961420US19	Keyed Alike #C420A		
	OL96145214A	OL961452US19	Keyed Alike #C452A		
	OL961MKKD14A	OL961MKKDUS19	Master Key / Keyed Different		
	OL961MKKA14A	OL961MKKAUS19	Master Key / Keyed Alike		

CASCADE SERIES™ – DISC TUMBLER CAM LOCKS

ACCESSORIES

MASTER KEY



No.	Description
OLMKE41A	Master key E41A (for MK locks)

KEYING KIT



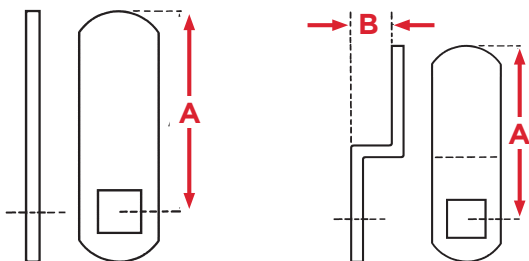
No.	Description
OLD1	Disc Tumbler Keying & Master Keying Kit (KA/KD/MK)

CUT KEY



No.	Description
OLC346A	Cut key for stock KA #C364A
OLC390A	Cut key for stock KA #C390A
OLC413A	Cut key for stock KA #C431A
OLC415A	Cut key for stock KA #C415A
OLC420A	Cut key for stock KA #C420A
OLC452A	Cut key for stock KA #C452A

CAM OPTIONS

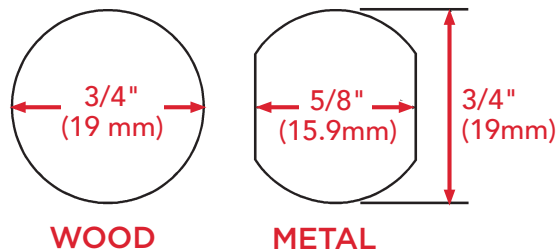


STRAIGHT CAMS	No.	Dim. A (length)	Description
	OLP95CM1™	1 1/2" (38.1 mm)	Straight cam
	OLP95CM3	3" (76.2 mm)	Straight cam
	OLP95CM5	1 1/2" (38.1 mm)	Straight hook cam
	OLP95CM6	1" (25.4 mm)	Straight cam

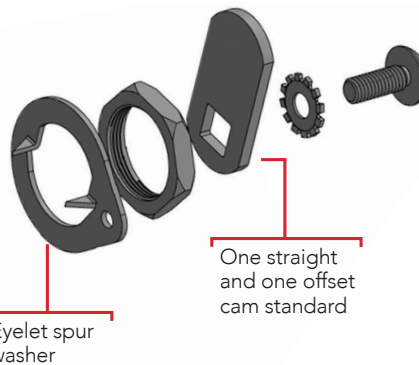
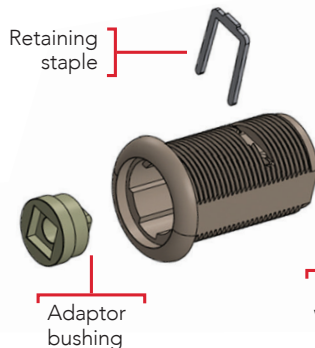
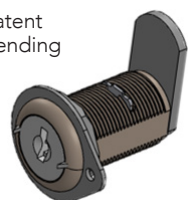
OFFSET CAMS	No.	Dim. A (length)	Dim. B (offset)	Description
	OLP95CM2™	1 1/8" (28.6 mm)	11/32" (8.7 mm)	Offset cam
	OLP95CM4	1 5/8" (41.3 mm)	5/16" (7.9 mm)	Offset cam

** OLP95CM1 and OLP95CM2 are included standard with each disc tumbler cam lock. All cams are available separately.

MOUNTING CUTOUT



Patent pending



One straight and one offset cam standard

