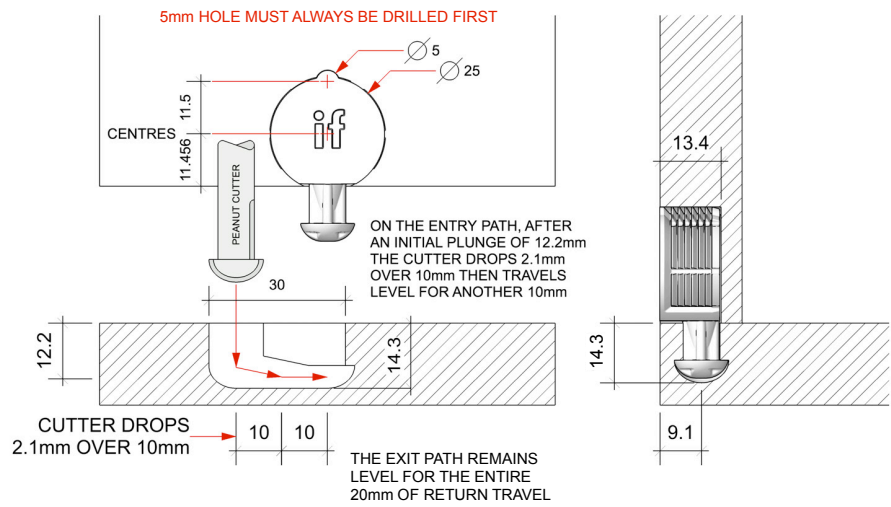
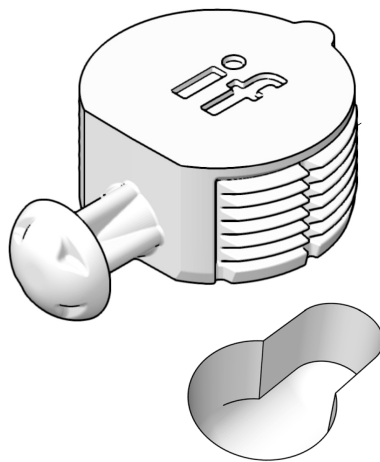
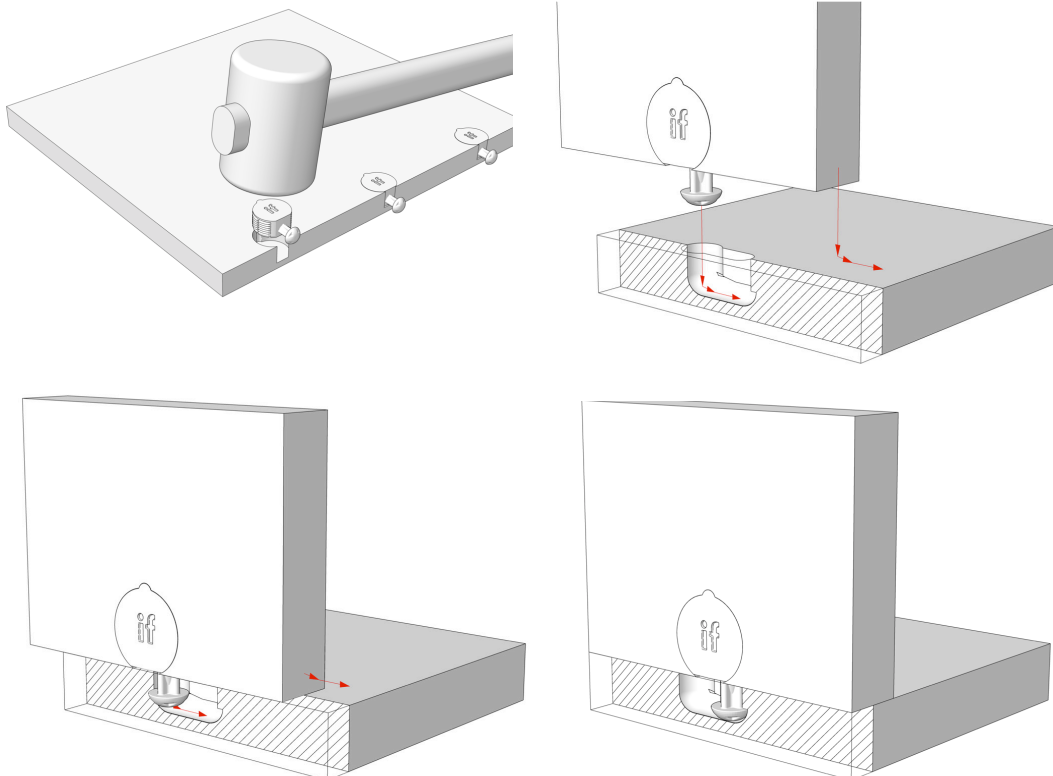




## Machining

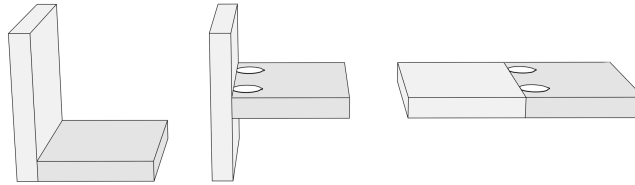


## Assembly





## Applications



## Technical Specifications

### PEANUT® 1 Technical data

<b>COMPONENT COMPOSITION</b>	GLASS-FIBRE REINFORCED PLAST
<b>MATERIAL THICKNESS</b>	>15.3MM
<b>TOLERANCE (25mm HOLE)</b>	+0.1mm and -0.25mm (DIAMETER)
<b>TOLERANCE (PEANUT® CUTTER SLOT)</b>	+0.3mm and -0.4mm (DEPTH)

## Strength Data

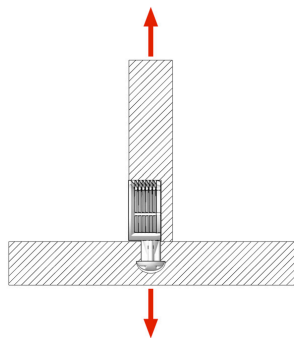


Fig. A

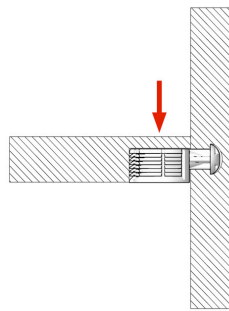


Fig. B

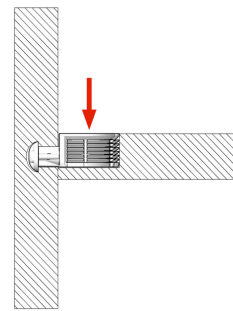


Fig. C

### PEANUT® 1 Tensile strength (based on 1 component):

TESTED BY:



MATERIAL	TENSILE STRENGTH (Fig. A)
PARTICLE BOARD (18mm MFC) from EGGER	750 N / 75 KG ( 1 COMPONENT )
MDF (18mm)	950 N / 95 KG ( 1 COMPONENT )

### PEANUT® 1 Shear strength (based on 2 component):

TESTED BY:



MATERIAL	SHEAR STRENGTH (Fig. B)	SHEAR STRENGTH (Fig. C)
PARTICLE BOARD (18mm MFC) from EGGER	1200 N / 120 KG ( 2 COMPONENTS )	650 N / 65 KG ( 2 COMPONENTS )
MDF (18mm)	1350 N / 135 KG ( 2 COMPONENTS )	950 N / 95 KG ( 2 COMPONENTS )

PLEASE NOTE THAT THE STRENGTH MAY VARY DEPENDING ON MATERIAL AND QUALITY OF MATERIAL USED.

### PEANUT® 1 TOOLING REQUIREMENTS:

<b>IF SOLID CARBIDE PEANUT CUTTER</b>	MAX RPM 14000	CREATES 6500+ SLOTS (BASED ON MELAMINE FACED PARTICLE BOARD) THIS TOOL CANNOT BE SHARPENED
<b>5mm SOLID CARBIDE DRILL</b>		ANY 5mm DRILL WILL WORK (WE HAVE FOUND THE SOLID CARBIDE DRILL WE SUPPLY GIVES BEST RESULTS)
<b>25mm HIGH PERFORMANCE DRILL</b>		ANY 25mm DRILL WILL WORK (WE HAVE FOUND THE SOLID CARBIDE DRILL WE SUPPLY GIVES BEST RESULTS)