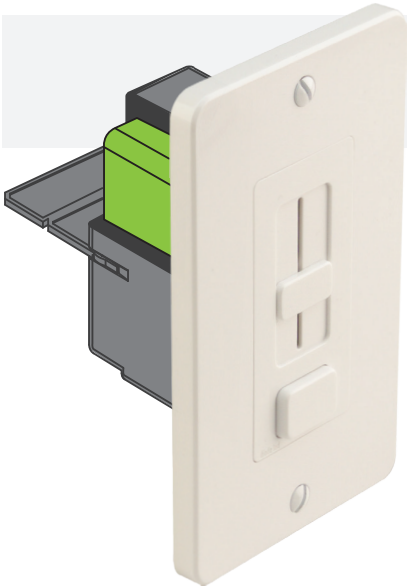


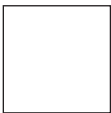
SWITCHEX®

DIMMER + DRIVER

SPECIFICATION SHEET



FINISHES



Glossy
White



Glossy
Light Almond



Glossy
Dark Brown



Glossy
Black



OVERVIEW

SWITCHEX simplifies LED array lighting systems by combining an in-wall LED dimmer switch and power supply into a single integrated unit. SWITCHEX mounts in a standard in-wall switch box, accepts 120V AC and converts to low voltage DC. SWITCHEX is compatible with most solid color 12V and 24VDC tape lights and fixtures.

FEATURES AND BENEFITS

- First LED Driver + In-Wall Dimmer Switch in one unit.
- Simplifies LED installation by eliminating compatibility issues between driver and dimmer.
- Fits in a standard recessed electrical box.
- 100% - 1% smooth dimming.
- No minimum load.
- Single Pole preset dimmer with on/off push switch.
- Adjustable voltage output dial to address voltage drop.
- Includes voltage barrier partition to install high and low voltage circuit in same switch box.
- No derating required when ganging units.
- Power failure memory: If power is interrupted, SWITCHEX will return to setting prior to interruption.
- 3x included face plates: Glossy White, Glossy Light Almond, and Glossy Dark Brown (trim plates not included).

APPROVED LED FIXTURES

SWITCHEX is compatible with Diode LED solid color 12V and 24V tape light and fixtures, including but not limited to:

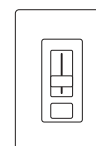
avenue 24tm	HYDROLUME	SPOTMOD® TILE**
blazetm *	PLUStm	SPOTMOD® LINK**
double blazetm	SIDEWINDERTm	PURALIGHT® 2***
FLUID VIEW®*	ULTRA BLAZEtm	
HYDROLUMEm	VALENTm	

* Not compatible with Amber, Red, & Green tape lights
 ** Includes SPOTMOD TILE & LINK Series (DI-SPOT-TL** & DI-SPOT-LK**)

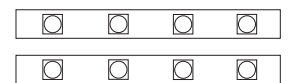
*** Not compatible with Yellow, Red, & Green modules



120VAC



SWITCHEX



12 or 24VDC Array / Fixture

SPECIFICATIONS

Compliance & Regulatory Approvals

- cULus Listed (US & Canada) Low Voltage Lighting System #E469769.
- FCC Approved. Complies with the limits for a Class B digital device, pursuant to Part 15 of the FCC Rules.
- RoHS Certified.
- CE Certified.
- Conforms to NEC Code 725.136 (See Mechanical Diagram): Class 1 and Class 2 circuit in same enclosure must be separated by a barrier (partition) unless Class 2 circuit conductors are installed in accordance with 725.41 Class 1 Circuits.

Input

- Input Voltage: 120VAC (108 ~ 132VAC), 50/60Hz (47 ~ 63Hz)
- Power Factor: >0.9 @ 120VAC 60Hz max load.
- Total Harmonic Distortion (THD): ≤20% @ 120VAC 60Hz max load. Tested to comply in accordance with IEC 61000-3-2.
- Stand-by Power: ≤0.5W.
- Efficiency: ≥91% @ 120VAC max load.
- Input Current: <1.0A @ 120VAC max load.
- In-Rush Current: Meets NEMA-410 requirement at any nominal input full sine wave voltage and maximum load at 25°C.
- Leakage Current: <500µA @ 120VAC.
- Surge/Transient: Tested to meet transients defined in IEC 6100-4-4, level 3 & IEC 6100-4-5, level 3.

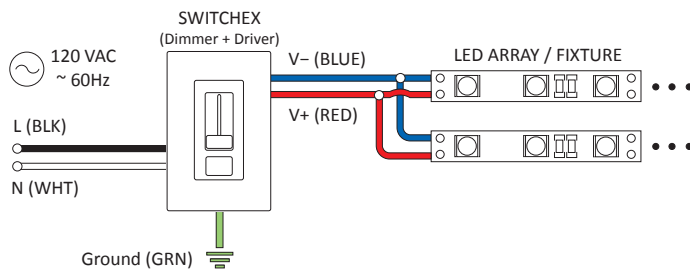
Output

- Dimming: Output voltage is adjustable via sliding lever
- Voltage Adjustment Dial: Increases output +1V to compensate for voltage drop from control to luminaire.
- Startup Time: The main supply output voltages remain within the regulation limit of +/- 3%.
- Protections: Short circuit, thermal runaway, and over voltage.
- Output Ripple Current: ≤20% of the rated output current @ 120VAC max load.

Environmental Requirements

- Indoor use only.
- Ambient Operating Temperature: 0°C to 40°C
- Humidity: 8 ~ 90% relative humidity, non-condensing.

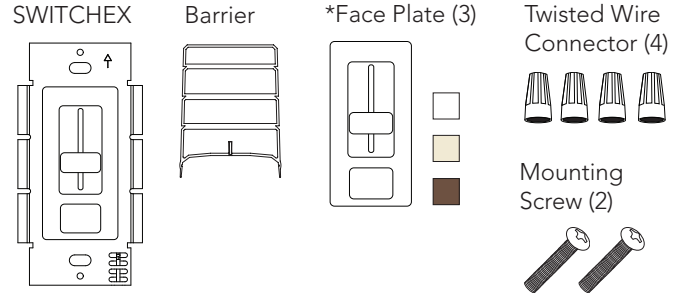
SYSTEM DIAGRAM



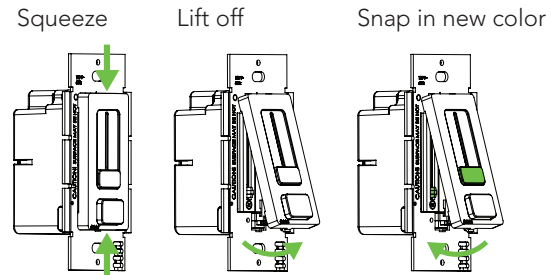
DIMMER MODELS

† No.	Input Voltage	Output Voltage	Max. Load
D11260	120VAC	12VDC	60W, 5A
D124100		24VDC	100W, 4.2A

† Each product includes the following accessories:



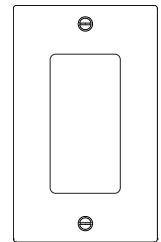
* Face Plates are interchangeable:



FACE PLATES (ALL 3 INCLUDED WITH DIMMER)

Color / Finish

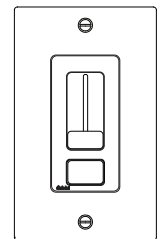
Glossy White	
Glossy Light Almond	
Glossy Dark Brown	



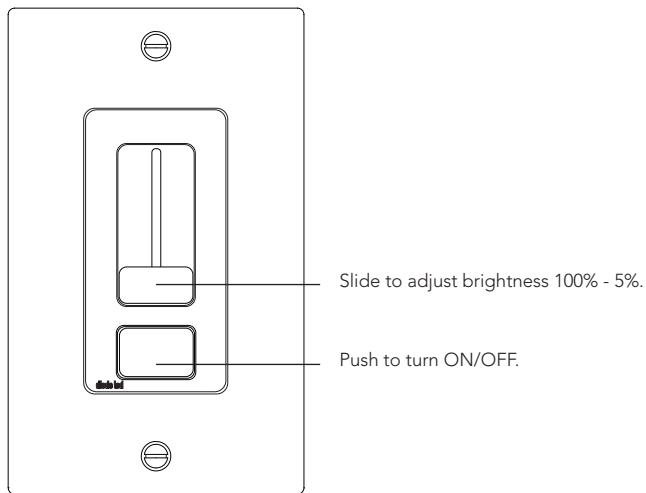
TRIM PLATE KITS (SOLD SEPARATELY)

No.	Color / Finish
445090	Glossy Black

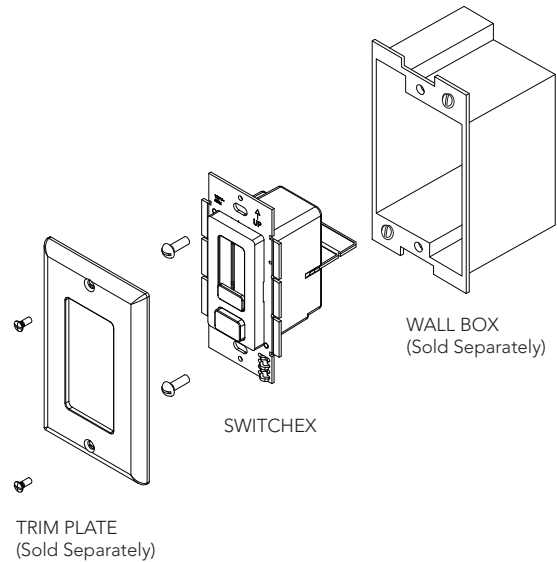
Includes black Switchex face plate and trim plate.



OPERATION

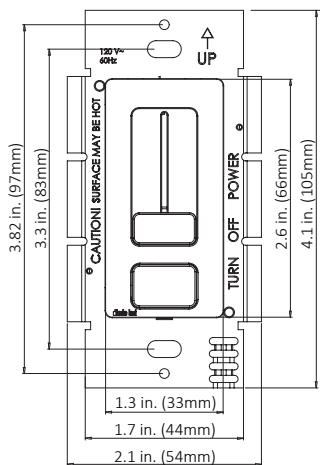


MOUNTING

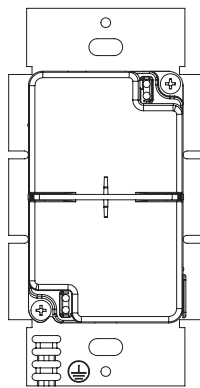


MECHANICAL DIAGRAM

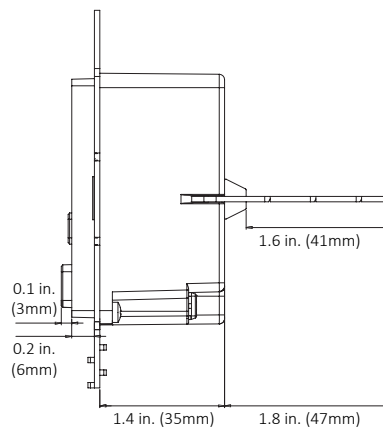
SWITCHEX Front



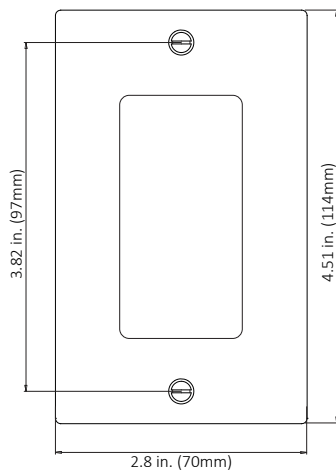
Back



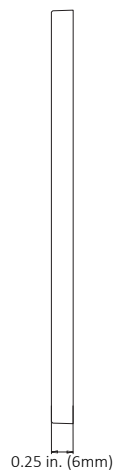
Side with Voltage Barrier



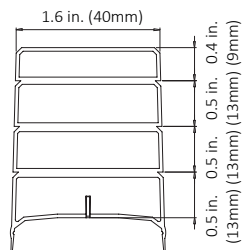
Trim Plate Front



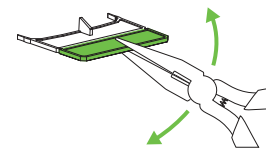
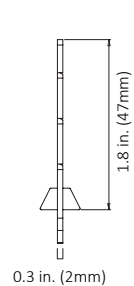
Side



Barrier Top



Side



For shallow boxes, barrier can be shortened. Grip with pliers. Bend back and forth until fin breaks off.

VOLTAGE DROP CHARTS

For best performance and lumen output, ensure proper wire gauge is installed to compensate for voltage drop of low voltage circuits.

EXAMPLE: 12V VOLTAGE DROP & WIRE LENGTH DISTANCE CHART

Wire Gauge	5W .42A	10 W .8 A	20 W 1.7 A	30 W 2.5 A	40 W 3.3 A	50 W 4.2 A	60 W 5.0 A
22 AWG	27 ft	14 ft	7 ft	4.5 ft	3.5 ft	2.8 ft	2.2 ft
20 AWG	43 ft	18 ft	9 ft	6 ft	5 ft	4 ft	3 ft
18 AWG	68 ft	34 ft	17 ft	11 ft	8 ft	6 ft	5 ft
16 AWG	110 ft	54 ft	27 ft	18 ft	13 ft	10 ft	9 ft
14 AWG	170 ft	86 ft	43 ft	29 ft	21 ft	17 ft	14 ft
12 AWG	275 ft	134 ft	68 ft	45 ft	34 ft	27 ft	22 ft
10 AWG	430 ft	199 ft	99 ft	66 ft	49 ft	39 ft	33 ft

- 1 Determine load size. Let's assume load is 55 W. Round up to nearest load.
- 2 Determine distance from SWITCHEX to load. Let's assume the distance is 20 ft.
- 3 It's recommended to install 12 AWG to eliminate excess voltage drop.

12V VOLTAGE DROP & WIRE LENGTH DISTANCE CHART

Wire Gauge	5W .42A	10 W .8 A	20 W 1.7 A	30 W 2.5 A	40 W 3.3 A	50 W 4.2 A	60 W 5.0 A
22 AWG	27 ft	14 ft	7 ft	4.5 ft	3.5 ft	2.8 ft	2.2 ft
20 AWG	43 ft	18 ft	9 ft	6 ft	5 ft	4 ft	3 ft
18 AWG	68 ft	34 ft	17 ft	11 ft	8 ft	6 ft	5 ft
16 AWG	110 ft	54 ft	27 ft	18 ft	13 ft	10 ft	9 ft
14 AWG	170 ft	86 ft	43 ft	29 ft	21 ft	17 ft	14 ft
12 AWG	275 ft	134 ft	68 ft	45 ft	34 ft	27 ft	22 ft
10 AWG	430 ft	199 ft	99 ft	66 ft	49 ft	39 ft	33 ft

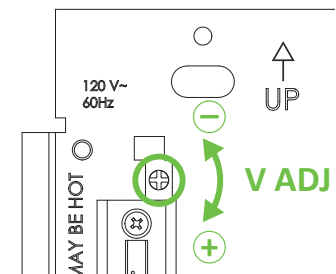
24V VOLTAGE DROP & WIRE LENGTH DISTANCE CHART

Wire Gauge	5 W .2 A	10 W .42 A	20 W .83 A	30 W 1.3 A	40 W 1.7 A	50 W 2.1 A	60 W 2.5 A	70 W 2.9 A	80 W 3.3 A	90 W 3.75 A	100 W 4.2 A
22 AWG	107 ft	52 ft	27 ft	17 ft	13 ft	10.5 ft	9 ft	7.5 ft	6.8 ft	6 ft	5.3 ft
20 AWG	170 ft	85 ft	43 ft	27 ft	21 ft	17 ft	14 ft	12 ft	11 ft	9 ft	8 ft
18 AWG	270 ft	134 ft	68 ft	45 ft	33 ft	27 ft	22 ft	19 ft	17 ft	15 ft	14 ft
16 AWG	430 ft	215 ft	109 ft	72 ft	54 ft	43 ft	36 ft	31 ft	27 ft	24 ft	22 ft
14 AWG	680 ft	345 ft	174 ft	115 ft	86 ft	69 ft	57 ft	49 ft	43 ft	39 ft	36 ft
12 AWG	1090 ft	539 ft	272 ft	181 ft	135 ft	108 ft	90 ft	77 ft	68 ft	61 ft	56 ft
10 AWG	1730 ft	784 ft	397 ft	263 ft	197 ft	158 ft	131 ft	112 ft	98 ft	97 ft	82 ft

VOLTAGE ADJUSTMENT

SWITCHEX can provide a 1V boost if the fixture is receiving noticeable light degradation.

- A. Pop off face plate as shown in Step 4 of INSTALLATION.
- B. Use a small screwdriver to adjust output voltage by turning adjustment dial clockwise.



SAFETY AND WARNINGS

1. UNLIKE TRADITIONAL DIMMING CONTROLS, SWITCHEX REQUIRES UNIQUE WIRING STEPS. READ ALL WARNINGS AND INSTALLATION INSTRUCTIONS THOROUGHLY.
2. Install in accordance with national and local electrical code regulations.
3. This product is intended to be installed and serviced by a qualified, licensed electrician.
4. NEC Code 725.136: Class 1 and Class 2 circuits in same enclosure must be separated by a barrier unless Class 2 circuit conductors are installed in accordance with 725.41 Class 1 Circuits. For example, Non-Metallic (NM) cable is considered a Class 1 circuit conductor. Therefore, if both high voltage and low voltage circuits are installed with NM cable then the voltage barrier is not required for installation.
5. Only install compatible 12 V or 24 V Constant Voltage DC fixtures or warranty will be void.
6. Suitable for indoor / dry installation.
7. To compensate for voltage drop, ensure applicable gauge in-wall rated wire is installed between control and fixture.
8. Do not modify product beyond instructions or warranty will be void.

WARRANTY

Limited Warranty

This product has a five (5) year limited warranty from the date of shipment. This warranty does not include the additional accessories referenced in this specification sheet. Complete warranty details for fixtures and additional accessories are available at www.DiodeLED.com under the 'Tools & Resources' tab. For warranty related questions please contact product support.

Consumer's Acknowledgment

Diode LED stands behind its products when they are used properly and according to our specifications. By purchasing our products, the purchaser agrees and acknowledges that lighting design, configuration and installation is a complex process, wherein seemingly minor factors or changes in layout and infield adjustments can have a significant impact on an entire system. Choosing the correct components is essential. Diode LED is able to work with the original purchaser to make an appropriate product selection to the extent of the limited information that the customer can provide, but it is virtually impossible for Diode LED to design a system that foresees every unknown factor. For this reason, this Warranty does not cover problems caused by improper design, configuration or installation issues. Any statement from a Diode LED employee or agent regarding a customer's bill of goods and/or purchase order is NOT an acknowledgment that the products purchased are designed and configured correctly. The purchase agrees and acknowledges that it is the customer's responsibility to adhere strictly to all information contained in the Product Specification Sheets.

There is often more than one way to design, configure and layout an LED lighting application properly to achieve the same lighting effect. Diode LED strongly recommends that licensed professionals be used in the design and installation of lighting systems that include Diode LED products. The specifications include important information that a designer and installer should carefully review and strictly follow. Qualified designers and certified and/or licensed installers, with access to the final installation environment, customer goals, and Diode LED product specifications can make the requisite decisions appropriate for a successful finished lighting application.