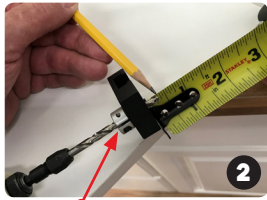


DRILLING HINGE PLATE HOLES

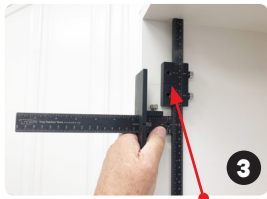
Parts used:
Cabinet Hardware Jig,
2 Sliding Drill Guides



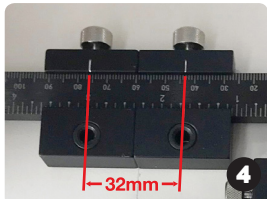
Mark center of hinge plate



Set **Stop Collar** to drill depth and tighten; depth varies depending on screw type and cabinet material



Place two **Sliding Drill Guides** side by side lining up center line with your mark



Two guides together produces (industry standard) **32mm** hinge plate dimensions



Set **Large Stop** to 37mm (industry standard).
Drill top hinge plate holes



Drill bottom holes

KNOB ON DRAWER FRONT

Parts used: Cabinet Hardware Jig



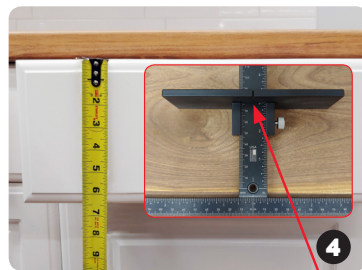
Place hardware (measure as needed) to find position you like; mark hole location (We are centering on width and height)



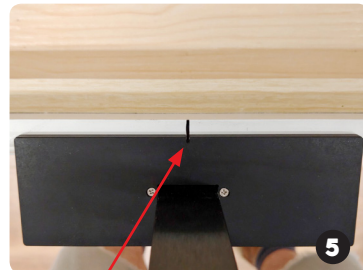
Measure width to find center



Mark center on top of drawer



Measure height of drawer and set **Large Stop** at half of drawer height



Line up **notch** on center of **Large Stop** with center mark at top of drawer then push tool flush against drawer face



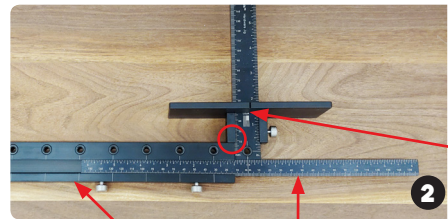
Drill hole using fixed center drill bushing (Large stop reversed for stability)

LINE BORING FOR SHELF PINS

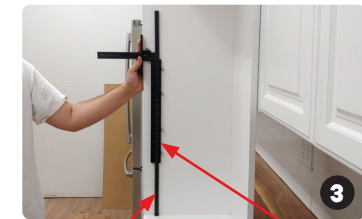
Parts used: Cabinet Hardware Jig, 1-2 Extension Bars, Extended Ruler



Measure and mark desired location of center hole to be drilled (we are drilling in sets of three)



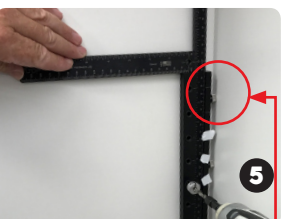
Join **Extension Bar** to **Cabinet Hardware Jig**. When **Large Stop** meets extension bars, (industry standard for shelf pin depth is achieved at **37mm**)



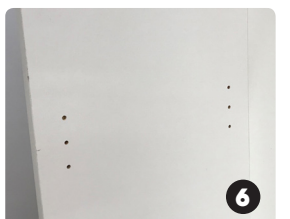
Slide **Extended Ruler** into **Extension Bar**, align any drill bushing with mark in cabinet, tighten thumb screws



Mark your holes with tape for reference, drill first set of shelf pin holes



Remove **Large Stop** and press **thumb screws** against back panel then drill



Perfectly spaced every time

SCAN FOR WEB INSTRUCTIONS



©True Position Tools, LLC 2018

SEE MORE AT TRUEPOSITIONTOOLS.COM

Manufacturers Limited One Year Warranty:

True Position Tools makes every effort to assure that its products meet high quality and durability standards. We guarantee to the original purchaser that this product is free from defects in material and workmanship for the period of 1 year from the date of purchase. This warranty does not apply to damage due directly or indirectly to alteration, misuse, abuse, negligence or accidental, or repairs outside our facilities, lack of maintenance, or normal wear and tear. We shall in no event be liable for death, injuries to persons or property, or for incidental, contingent, special or consequential damages arising from the use of our product. Some states do not allow the exclusion or limitation of incidental or consequential damages. So the above limitations may not apply to you.

To take advantage of this warranty, the product or part must be returned to us with the transportation charges prepaid. Proof of purchase date and an explanation of the complaint must accompany the merchandise. If our inspection verifies the defect, we will either repair or replace the product at our election. We will return repaired products at our expense, but if we determine there is no defect, or that the defect resulted from causes not within the scope of our warranty, then you must bear the cost of returning the product. Subject to proof of purchase. Only available to original owner. This warranty gives you specific legal rights and you may also have other rights which vary from state to state.

Bushing Limited Lifetime Warranty:

Our bushings are warranted for the life of the product and available only to the original purchaser. True Position Tools will offer standard replacement bushings for its products. Upon RMA, replacement bushings will be sent to the reseller whom the product was purchased from or in approved cases, directly to the customer. Upon RMA, True Position Tools may insert the bushings for the customer in special circumstances, freight will be paid by the customer. This warranty does not apply to damage due directly or indirectly to alteration, misuse, abuse, negligence or accidental, or repairs outside our facilities, lack of maintenance. Subject to proof of purchase. Some states do not allow the exclusion or limitation of incidental or consequential damages. So the above limitations may not apply to you.



TRUE POSITION TOOLS

A Guide to Using True Position Tools Hardware Jigs

- Be sure to wear proper safety gear when using power tools
- Make sure hands are out of the way when drilling
- Double check all dimensions and tighten all thumb screws before drilling
- Sliding and Large Stops are reversible if additional clearance is needed
- For high gloss or delicate finishes, use tape on tool or work piece to protect finish



SEE MORE
TRUEPOSITIONTOOLS.COM

KNOB ON DOOR INSTALLATION

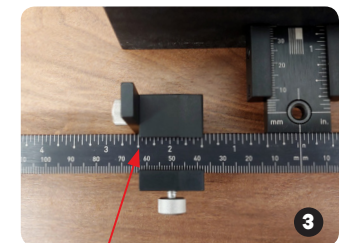
Parts used: Cabinet Hardware Jig, Sliding End Stop



Place hardware (measure as needed) to find position you like; mark hole location



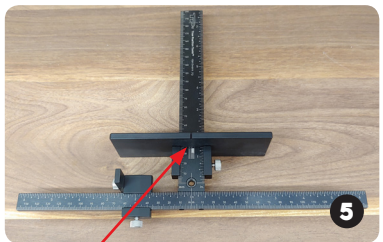
Measure from bottom of door to mark



Set **Sliding End Stop** to measurement from step 2 and tighten



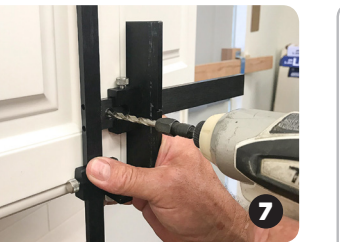
Measure from side of door to mark



Set **Large Stop** to measurement from step 4 and tighten



Position tool with stops as shown and drill hole through drill bushing



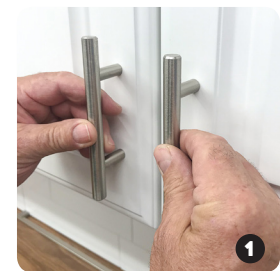
Reverse tool position onto opposite door and drill

SCAN FOR WEB INSTRUCTIONS



HANDLE ON DOOR INSTALLATION

Parts used: Cabinet Hardware Jig, Sliding End Stop, 1-2 Sliding Drill Guides



Place hardware (measure as needed) to find position you like; mark bottom hole location.



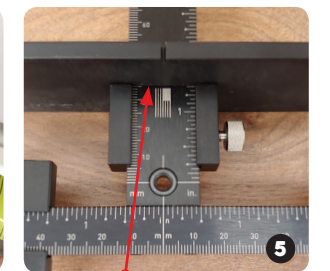
Measure from bottom of door to mark



Set **Sliding End Stop** to measurement from step 2 and tighten



Measure from side of door to mark



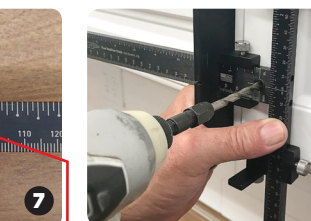
Set **Large Stop** to measurement from step 4 and tighten



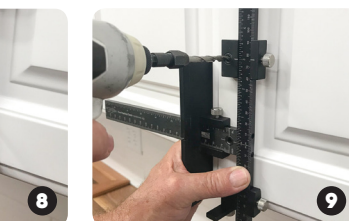
Measure hole centers



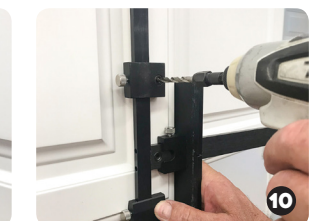
Transfer hardware measurement from step 6 to **Sliding Drill Guide** and tighten



Position tool as shown, drill through fixed center bushing for bottom hole



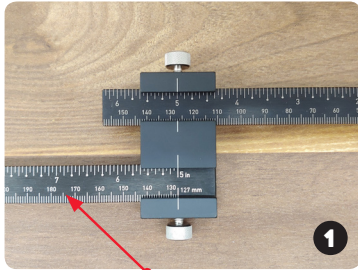
Drill through **Sliding Drill Guide** for top hole



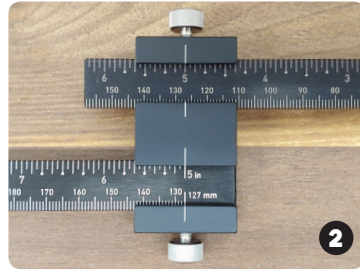
Reverse tool position onto opposite door and drill holes

USING EXTENDED RULER ATTACHMENT ON DRAWER

Parts used: Cabinet Hardware Jig, Sliding End Stop, 0-2 Sliding Drill Guides, Extended Ruler, Double Bracket



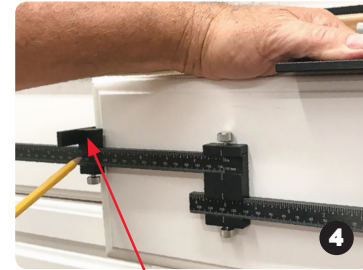
1 Use the **Extended Ruler** when installing hardware on multiple drawers with the same dimensions



2 Set each ruler at the 5" mark to extend the length of ruler to 22"



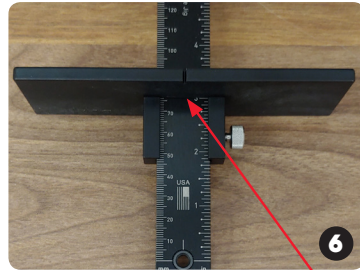
3 Measure drawer width to find center



4 Set the **Sliding End Stop** to half of the drawer width



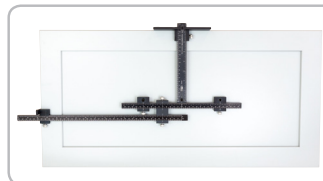
5 Place hardware (measure as needed) to find position you like; mark hole location with pencil (We are centering on width and height)



6 Measure mark from step 5, set **Large Stop** to measurement, and tighten (Our drawer height is 6" so we set our Large Stop at 3")



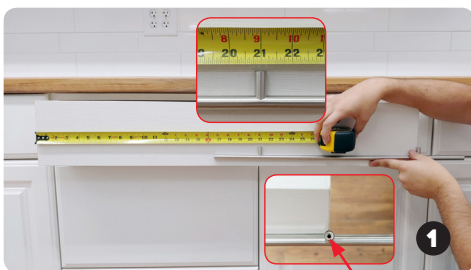
7 For knobs: drill through center bushing/ For handles: measure hardware and align each ruler to match hardware measurement then drill



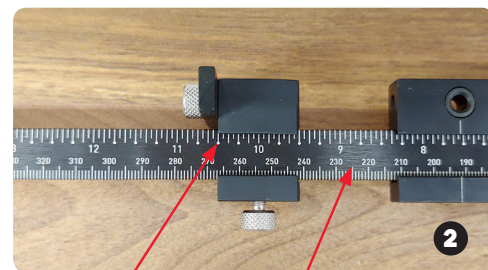
If your handle pattern interferes with Double Bracket, move bracket below t-square and align each ruler at the 2" mark as pictured above

LARGE HANDLE ON WIDE DRAWER FRONT

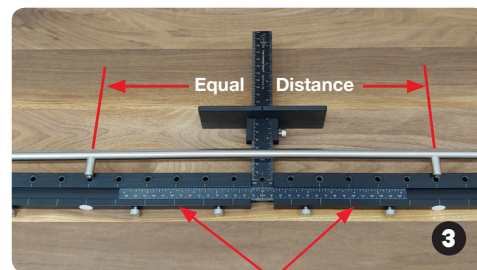
Parts used: Cabinet Hardware Jig, 2 Extension Bars, Extended Ruler, Sliding End Stop



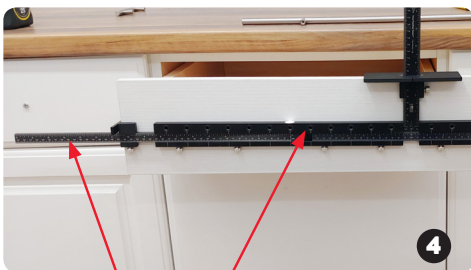
1 Line up center of one end of hardware hole with edge of drawer front and measure from opposite end of drawer to center of other hardware hole (our measurement is 21")



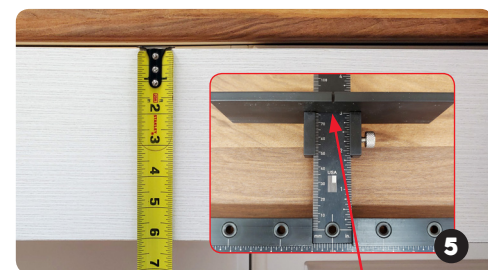
2 Set **Sliding End Stop** on **Extended Ruler** at half the measurement from step 1 (ours is 10½")



3 Place hardware on **Extension Bars** and mark holes to be drilled with tape



4 Attach the **Ruler** to the **Bar**; set 0 mark on **Ruler** with marked hole on **Bar**. If 0 mark does not work, use another digit - 10" mark makes for easy math



5 Measure height of drawer and set **Large Stop** to desired location (our drawer height is 6" so we set our Large Stop at 3")



6 Hold stops firmly against top and side of drawer. Drill through marked holes and install hardware

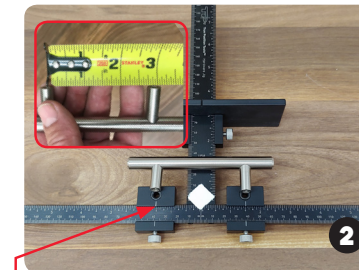
HANDLE ON DRAWER FRONT

Parts used: Cabinet Hardware Jig, 2 Sliding Drill Guides

*Use this method if you do not have Extended Ruler Attachment



1 Place hardware (measure as needed) to find position you like. We are centering handle on width and height



2 Measure hole centers. Adjust and tighten with **Sliding Drill Guides**. Cover unused bushing with tape to prevent accidental drilling.



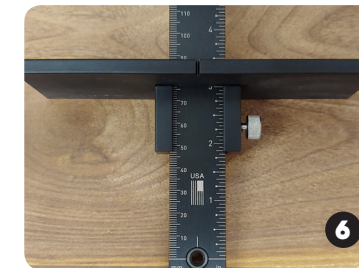
3 Measure drawer width to find center



4 Use half of measurement from step 3 to mark center on top of drawer



5 Measure height of drawer front



6 Set **Large Stop** to half of measurement from step 5 if centering



7 Line up notch on Large Stop with mark from step 4, then drill

LARGE HANDLE ON TALL DOORS

Parts used: Cabinet Hardware Jig, 2 Extension Bars, Extended Ruler, Sliding End Stop



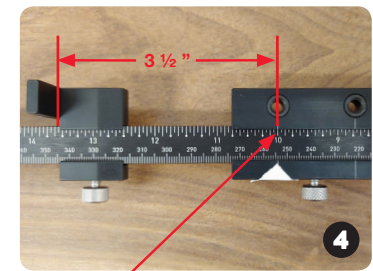
1 Place hardware (measure as needed) to find position you like; mark bottom hole location with pencil



2 Measure from bottom of door to mark (Ours is 3 ½")



3 Slide the **Extension Bars** onto the Cabinet Hardware Jig and tighten thumb screws



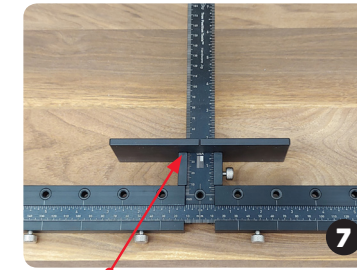
4 Set **Extended Ruler** at index mark for bottom hole. Set **Sliding End Stop** to measurement from step 2. (Ours is 3 ½")



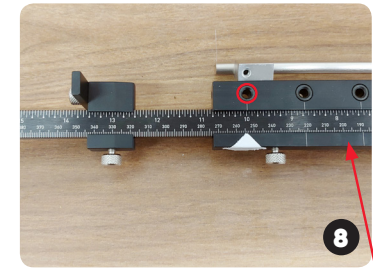
5 If 0 mark does not work, use another digit - 10" mark makes for easy math



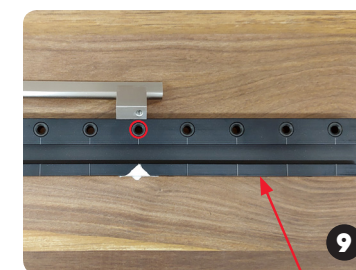
6 Measure from side of door to mark (Ours is 1 ¾")



7 Set **Large Stop** to measurement from step 6 and tighten thumb screw



8 Match the **bottom hole** on hardware to bottom hole on **Extension Bar** and mark with tape



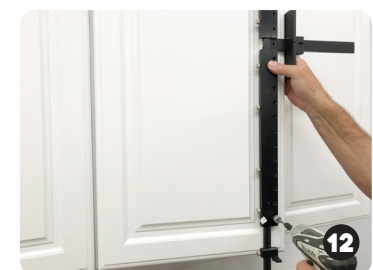
9 Match **top hole** on hardware to matching hole on **Extension Bar**; mark hole with tape



10 Hold both stops firmly against door and drill bottom hole



11 Drill top hole



12 Reverse tool for opposite door and repeat