



## Technical Documentation

### CAPTURA 100 MIFARE

Electronic lock with RFID



### Description of Function

- The **CAPTURA battery-powered electronic lock** can be used to lock doors, flaps and drawers that do not require multi-point locking. It is possible to use it as a right or left hand, top or bottom locking lock. Depending on the application, the lock can be fixed either to the case of the cabinet or to the door/drawer front. CAPTURA has locking pockets into which a locking pin engages.
- The lock is operated by **RFID cards** or tags which are held in front of the area in the furniture behind which the CAPTURA lock is located.
- With the optional **Cover C1 with integrated LED**, CAPTURA is also suitable for use with single-sheet steel doors. Suitability for multi-layer doors or omega profiles on request.
- With an optional **lightpoint pin**, the optical signal of the lock can be made visible on the exterior of wooden or HPL doors.
- The optional door **ejector A1** is spring-loaded and enables use of doors without handles.



You can find details regarding scope of applications and environmental conditions on page 2 – „product information“

### Instruction Manual

- The instruction manual is supplied with the product.
- Alternatively, you can find the instruction manual on our homepage:  
[www.lehmann-locks.com/de/service/downloads](http://www.lehmann-locks.com/de/service/downloads)
- Or scan QR-Code on the right



## Technical Documentation

### CAPTURA 100 MIFARE



Document-No.  
20-2095\_CAPTURA

English version

## Product information and testing

<b>Product</b>	CAPTURA 100 MIFARE®
<b>Type</b>	Electronic lock with 1-point locking
<b>Material</b>	Housing made of ABS, locking mechanism made of zinc die cast ZP5
<b>Surface test</b>	Surface tested according to DIN CEN/TS 16209:2011-09 „chemical demands“, classification of furniture surfaces. Resistant against cleaning agents and disinfectants
<b>Carried out tests and durability</b>	Minimum tensile strength 350 N according to DIN EN 16014 Durability test with 100.000 cycles
<b>Environmental conditions</b>	For indoor use, not suitable for outdoor use. Temperature -5°C up to +60°C at 30% to 80% relative air humidity
<b>Storage conditions</b>	Temperature -25°C up to +70°C to 30% to 80% relative air humidity (without batteries)
<b>Frequency</b>	13,56 MHz
<b>RFID-Technology</b>	MIFARE® Classic, MIFARE® DESFire® EV1/EV2
<b>Configuration</b>	Either by master and programming cards or by LEHMANN Management Software LMS
<b>Noise level (lock)</b>	65dB(A)
<b>Operating mode</b>	Assigned use or shared use
<b>Reader distance</b>	When using several locking systems in close proximity, a minimum distance of 10 cm between each lock and 15 cm between the RFID readers must be maintained. (see also page 3)
<b>Energy supply</b>	1x 3V CR123A LiMnO <sub>2</sub> Battery (inside the M-box)
<b>Durability of batteries</b>	Standby >2 years   in operation up to 25.000 cycles (assigned use)
<b>Range</b>	Depending on the type of transponder, up to 40 mm between the reader and the RFID card (customer's own transponders must be checked in advance for compatibility and range!)
<b>Comply with</b>	2014/53/EU "RED" (Radio Equipment Directive), RoHS2
<b>Tested as per</b>	ETSI EN 301 489-1 V2.2.3 (2019-11), ETSI EN 301 489-3 V2.1.1 (2019-03), ETSI EN 300 330 V2.1.1 (2017-02), EN55032:2015 / CISPR 32:2015, EN 61000-6-2:2005, EN 61000-4-2:2009, EN 61000-4-3:2006 + A1:2008 + A2:2010, EN 50364:2018, EN 62368-1:2014 + AC:2015 + A11:2017
<b>License</b>	Europe, USA, Canada, China (permission requirement is not needed) Other countries on request

## Scope of application

### Conventional use

The System CAPTURA is used as a convenient electronic locking system for office and residential furniture according to DIN EN 16014. It prevents unauthorized third parties from direct access to personal valuables and / or documents. Climate conditions are limited to dry and closed rooms. Please avoid ingress of moisture or increased air humidity. (see "environment conditions")  
In combination with the cover B1 the CAPTURA is suitable for metal surfaces.


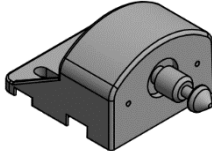
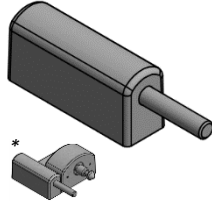
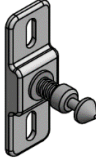

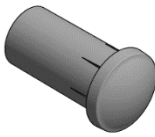
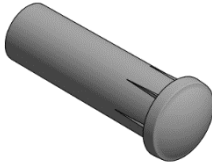

### Use only after consultation of the manufacturer

Please contact the manufacturer in advance in case of unconventional use, e.g. application in heightened humidity and/or heightened temperature environments like indoor swimming pools and sauna areas, areas of heightened dust emissions, non-furniture applications, etc.

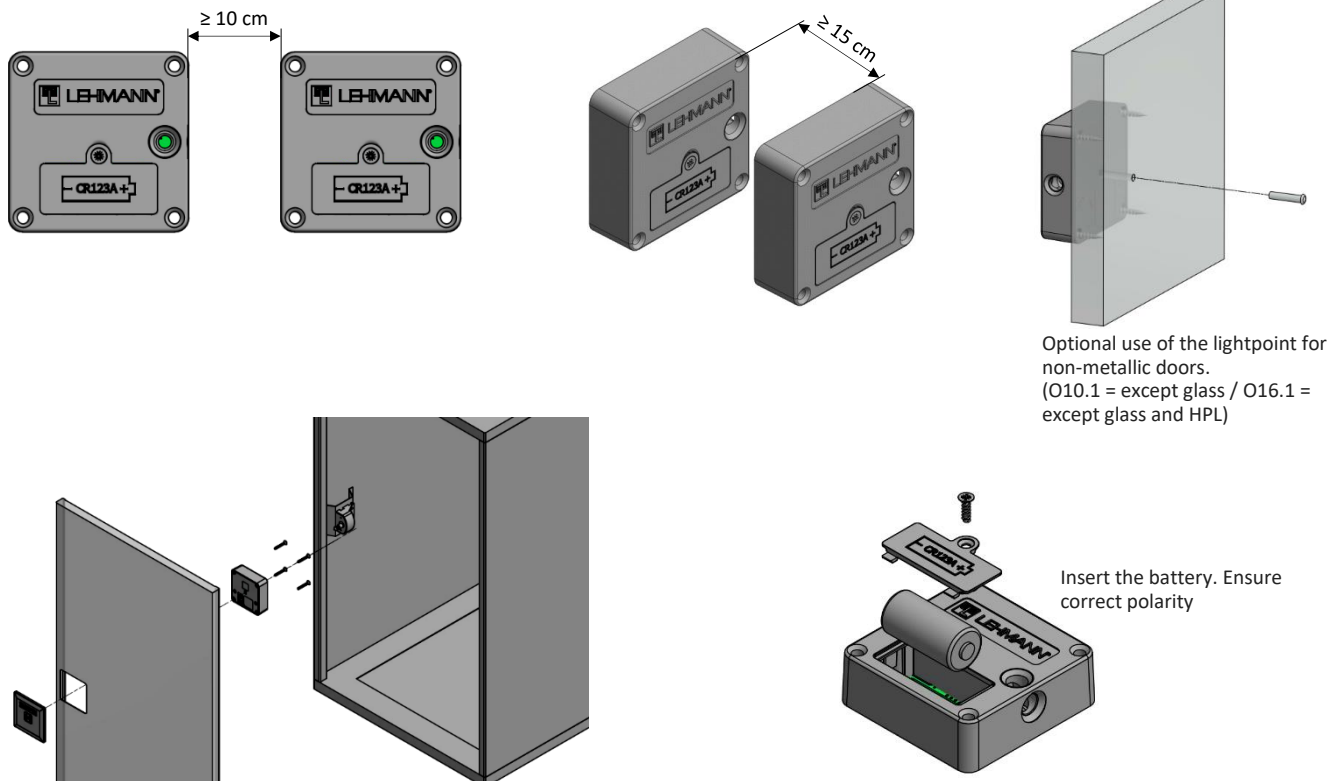
### Prohibited use

Following uses are not allowed: weapons cabinets, cabinets for hazardous or chemical substances, cabinets for ammunition, use in outdoor areas, safety of objects for which insurances require special security measures, applications which require a security level according to EN 1143-1 and/or VDMA 24992, as well as all uses which deviate from normal use and for which the manufacturer has not given approval.

## Parts of the system CAPTURA 100 MIFARE

<b>CAPTURA 100 MIFARE</b> 	<b>Locking pin SD Type A</b>  <ul style="list-style-type: none"> <li>• Suitable for hinge doors and drawers</li> <li>• Fixed to the cabinet or door / drawer</li> </ul>	<b>Ejector A1</b>  <ul style="list-style-type: none"> <li>• Spring pin for doors without handles</li> <li>* Only in connection with SD type A</li> </ul>	<b>Locking pin SD Typ B</b>  <ul style="list-style-type: none"> <li>• Suitable for sliding doors and drawers</li> <li>• Fixed to the cabinet</li> </ul>
<b>Cover C1</b>  <ul style="list-style-type: none"> <li>• Required for use in single-sheet steel doors</li> <li>• Integrated LED display</li> </ul>	<b>Lightpoint pin O10.1</b> <i>(dimension see page 4)</i>  <ul style="list-style-type: none"> <li>• Option for non-metallic doors (except glass)</li> <li>• Door thickness 10-15mm</li> </ul>	<b>Lightpoint pin O16.1</b> <i>(dimension see page 4)</i>  <ul style="list-style-type: none"> <li>• Option for non-metallic doors (except glass and HPL)</li> <li>• Door thickness 16-21mm</li> </ul>	<b>RFID-cards</b>  <ul style="list-style-type: none"> <li>• Installation, programming, operation etc. by use of various RFID cards</li> <li>• Configuration and management also possible via LEHMANN Management Software LMS</li> </ul>

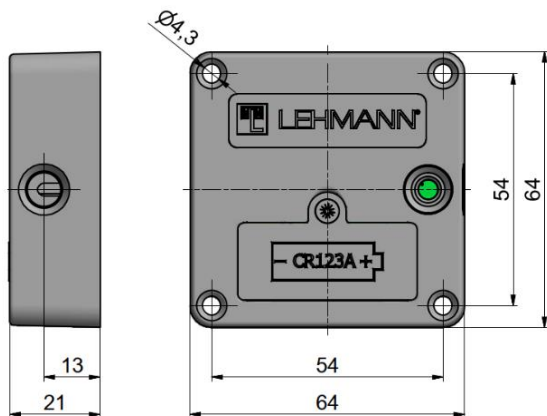
## Note



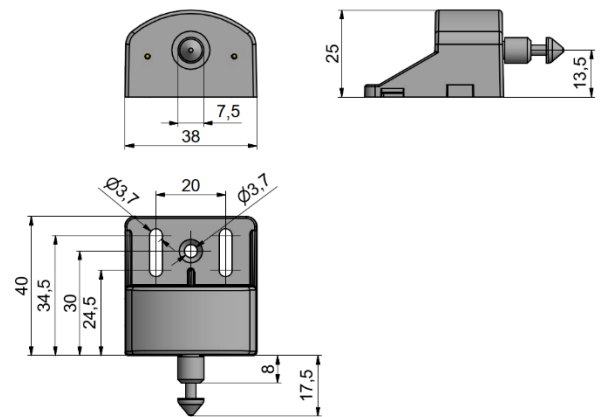
Use Cover C1 on single-sheet steel doors

## Dimensions

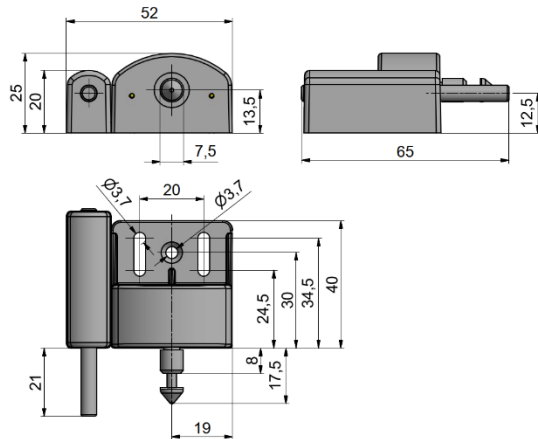
**CAPTURA 100 MIFARE**



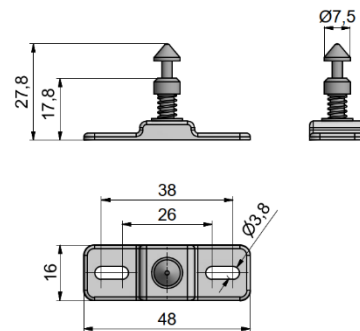
**Locking pin SD type A**



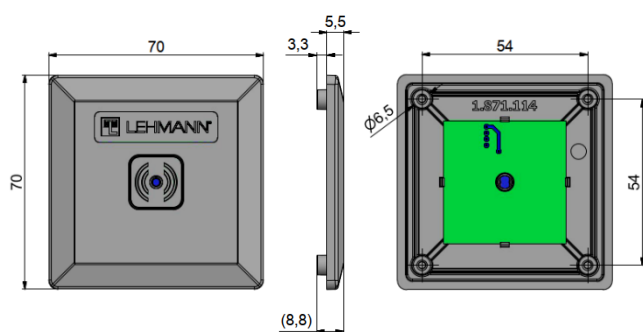
**Ejector A1 with locking pin SD type A**



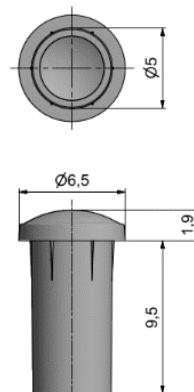
**Locking pin SD type B**



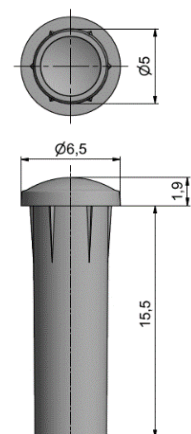
**Cover C1**



**Lightpoint pin O10.1**



**Lightpoint pin O16.1**

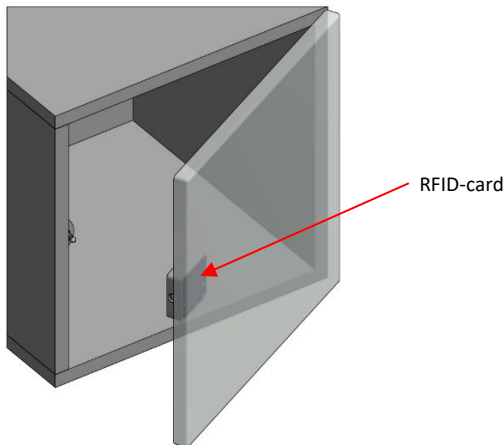


## Installation Examples

Depending on the application, CAPTURA can be fitted either on the door / drawer or in the cabinet case. When designing the furniture, please ensure that the area in front of which the lock is mounted is accessible to the user holding an RFID card.

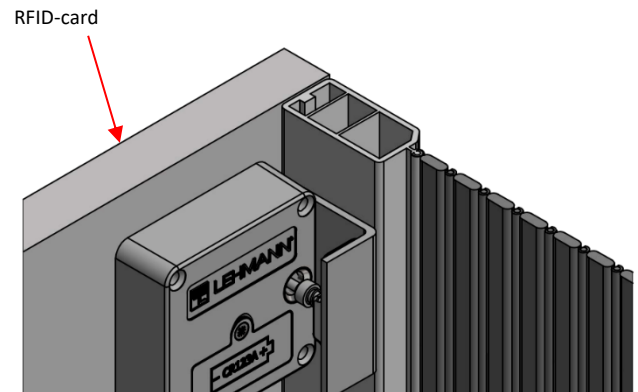
### Hinge Door Cabinet

CAPTURA on the back of the door, locking pin type A inside the cabinet



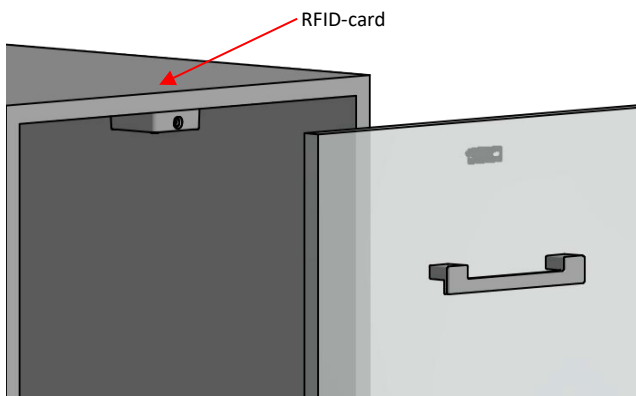
### Tambour Door Cabinet

CAPTURA inside the cabinet, locking pin type B on the back of handle profile



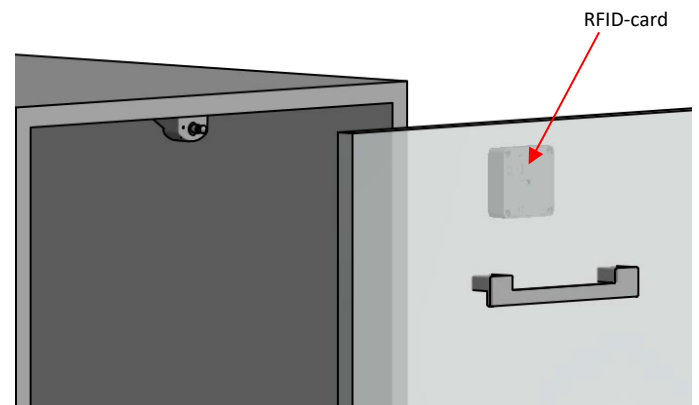
### Drawer Cabinet

CAPTURA inside the cabinet, locking pin type B on back of the drawer



### Drawer Cabinet

CAPTURA on the back of the drawer, locking pin type A inside the cabinet



## Note



In general, the use of our lock and locking systems in combination with additional mechanisms is possible. But in individual cases the compatibility has to be checked by the manufacturer. We do not take responsibility for damages due to incompatibility.



Batteries should not be disposed of as household waste. Please dispose of them responsibly by returning them to local collection points, retailers or recycling centres.