



# DOLCE

A SOFT TOUCH TO LIFE

PANELS | EDGEBOARDING | LAMINATES  
CABINET DOORS | MOLDINGS



**Richelieu**



# DOLCE

**DOLCE** features innovative new technology resulting in a silky smooth surface.

**DOLCE**'s anti-scratch and anti-fingerprint surface complements including kitchens, closets, offices, commercial projects and all design applications.

One-year warranty.



#### Abrasion and Scratch Resistant

The durability of the surface has been tested and found to have a high abrasion resistance, demonstrated with a test system which subjects the surface to a cycle of 160 rubs with a nylon / alumina abrasive material.



#### Chemical Resistant

The surface is tested by a rigorous laboratory procedure having confirmed its high chemical resistance to household products.



#### Fingerprints

The surface with a matte finish is fingerprint proof for improved aesthetics and provides a wonderful tactile experience.



#### Repairability

Minor scratches on the surface can be repaired with a simple thermal method using an iron at a temperature of 100c - 120c (level 2) on a clean cloth with a uniform movement lasting 20-30 seconds.

## DOLCE PANELS | EDGE BANDS | HPL

The panel faces are created by applying a polymeric foil using PUR adhesive to 19mm-thick MDF board (TSCA TITLE VI certification). The silky surface is the result of SERICA's latest generation of acrylic resin treatment and technology. The back features a matching TFL with a suede finish.

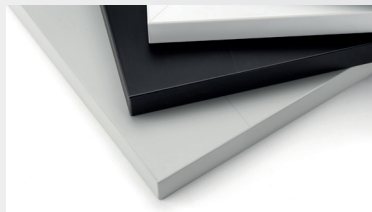
WHITE 001	GRAY 002	ANTHRACITE 003	BLACK 004
			

PANELS 48" x 110" (122 X 279 cm)			EDGE BANDS 300 LF roll 15/16" (23 mm)		HPL 48" x 120" (122 X 305 cm)	
1/4" (6.35 mm)		3/4" (19 mm)	3/64" (1 mm)		1/32" (0.8 mm)	
White 001	LN001MAT06490	LN001MAT19490	White 001	SMLN001A0124300	White 001	LNL001SM0740
Gray 002	LN002MAT06490	LN002MAT19490	Gray 002	SMLN002A0124300	Gray 002	LNL002SM0740
Anthracite 003	LN003MAT06490	LN003MAT19490	Anthracite 003	SMLN003A0124300	Anthracite 003	LNL003SM0740
Black 004	LN004MAT06490	LN004MAT19490	Black 004	SMLN004A0124300	Black 004	LNL004SM0740

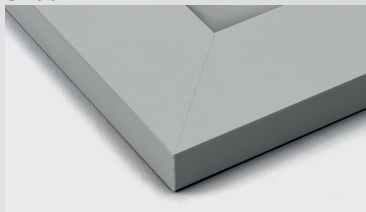
## DOLCE DOORS | DRAWERS | FRAME DOORS | COMPONENTS

The program offers a range of cabinet doors and custom-made components.

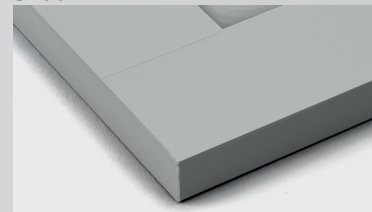
### SLAB



### S400



### S490



	MINIMUM		MAXIMUM	
	WIDTH	HEIGHT	WIDTH	HEIGHT
<b>Slab</b> Door and Cut To Size Component	3 3/4" (95 mm)	3 3/4" (95 mm)	46 1/2" (1 181 mm)	108 1/2" (2 756 mm)
<b>S400</b> Door, Drawer Front and Frame Door	4 5/8" (117 mm)	4 5/8" (117 mm)	50 1/2" (1 283 mm)	72" (1 829 mm)
<b>S490</b> Door, Drawer Front and Frame Door	6 3/4" (171 mm)	5 1/2" (140 mm)	50 1/2" (1 283 mm)	72" (1 829 mm)

- Doors higher than 50" (1.27 m) are not covered by any guarantee (warping or other things).
- We recommend the installation of a third hinge (without a spring) on doors that measure 36" (914 mm) wide or more.
- Edgebanding for doors and components is glued using PUR adhesive technology.

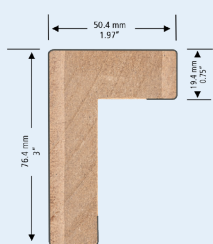
Kitchen | Furniture | Office | Restaurant | Hotel | Reception

**THE DOLCE COLLECTION OFFERS A COMPLETE RANGE OF PANELS, LAMINATE SHEETS, EDGEBOARDING AND CUSTOM-MADE CABINET DOORS.**

## DOLCE MOLDINGS

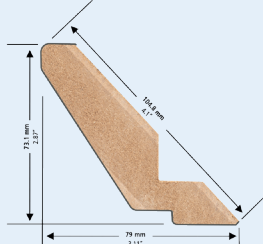
The program also offers matching moldings. They are wrapped with a polymer sheet using PUR adhesive on MDF molding.

### LIGHT MOLDING



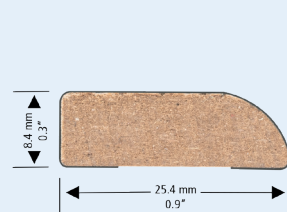
White 001	NML002MAT001
Gray 002	NML002MAT002
Anthracite 003	NML002MAT003
Black 004	NML002MAT004

### CROWN MOLDING



White 001	NML003MAT001
Gray 002	NML003MAT002
Anthracite 003	NML003MAT003
Black 004	NML003MAT004

### DECORATIVE MOLDING



White 001	NML001MAT001
Gray 002	NML001MAT002
Anthracite 003	NML001MAT003
Black 004	NML001MAT004

Visit our website for the technical information.

# DOLCE

A SOFT TOUCH TO LIFE

innovative  
**solutions**  
**clean designs**

**European influence**



[www.richelieu.com](http://www.richelieu.com)

Visit our website and try our step-by-step quick and simple web module under the **Cabinet Doors Section**.



**Serving you across North America**

UNITED STATES PANELS

Tel. : 1 844 433-3354

Fax : 1 844 433-3329

[www.richelieu.com](http://www.richelieu.com)

UNITED STATES DOORS

Tel. : 1 877 556-5150

Fax : 1 877 556-5151



DOLCEBRUS 2023-04  
Printed in Canada \$2