

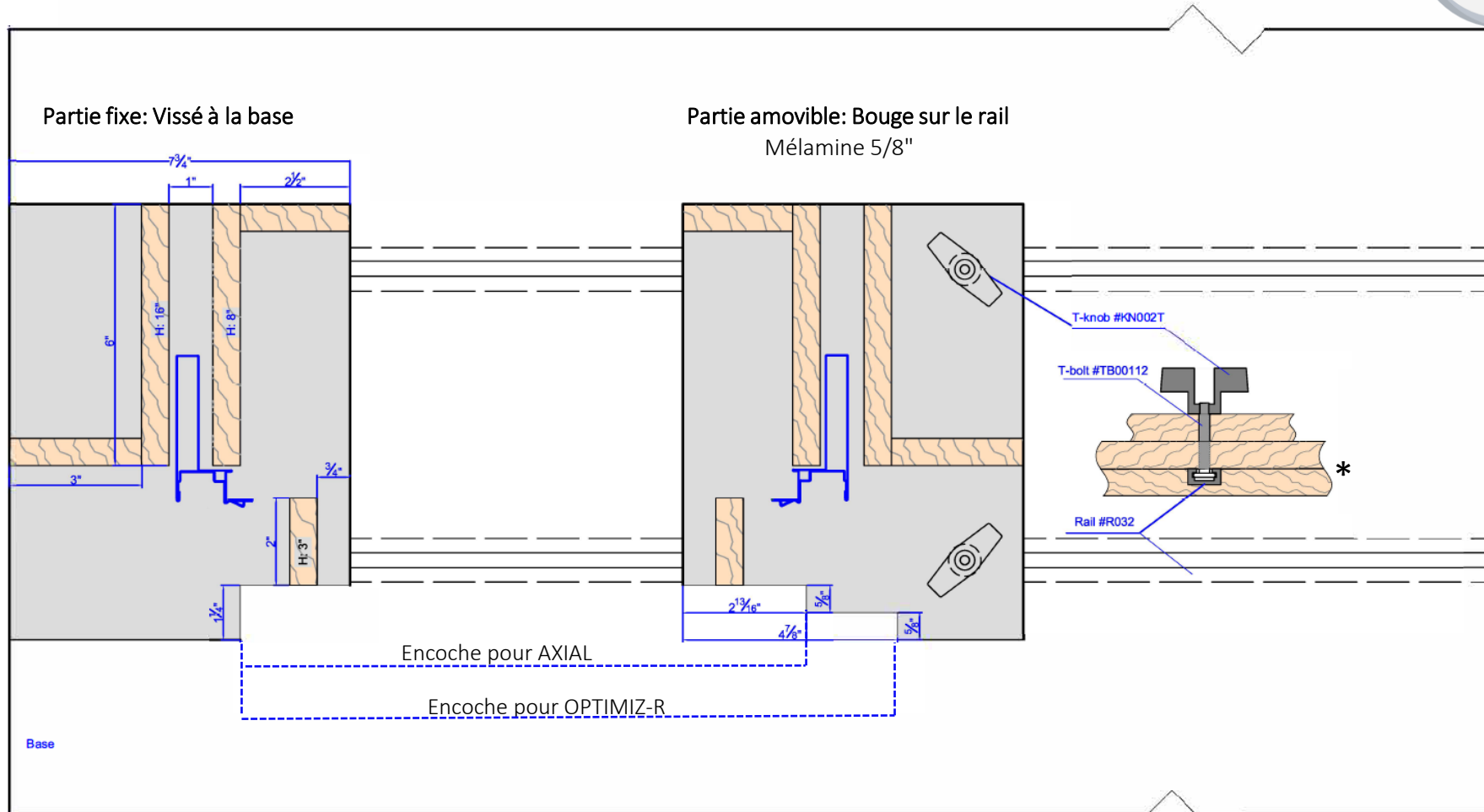


GABARIT D'ASSEMBLAGE






SIMPLE ET RAPIDE

Profondeur de la base : 18"



Largeur de la base : Min. 54" pour un cabinet de 48"

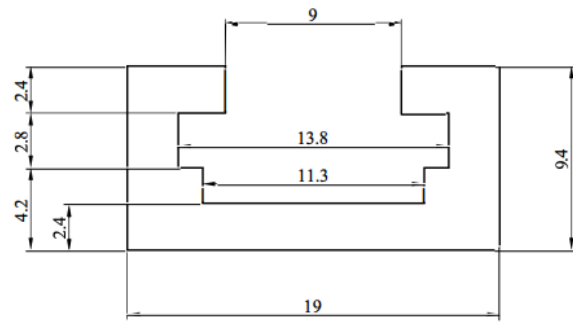
Ce dont vous avez besoin :

- Feuilles de mélamine 5/8"
- 2x Boulons en T #TB00112 
- 2x Boutons d'insertion # KN002T 
- 2x Rails T-Track #R032 

***Pour la base :**
2 épaisseurs de mélamine 5/8" pour installer les rails

RAIL T-TRACK

#R032

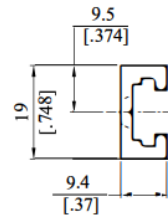


SCALE 4:1

EXPOSED SURFACE

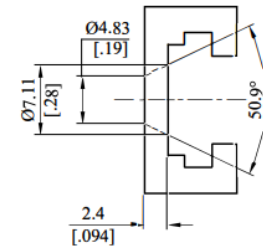
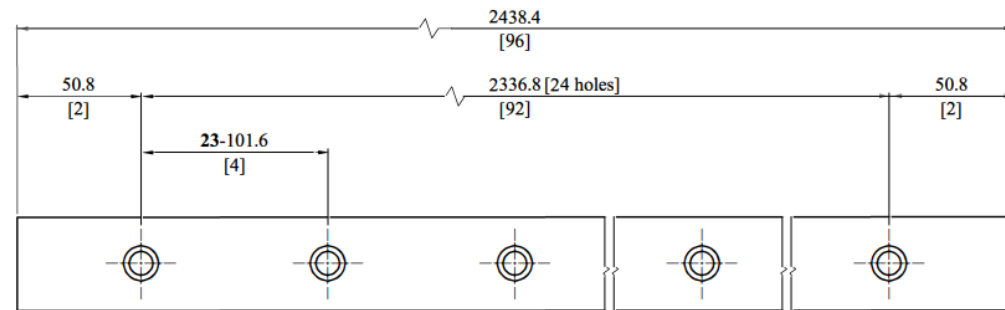
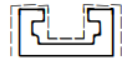


SCALE 1:1



Alu Profile's
Code: QL032
Alloy: 6063T5

EXPOSED SURFACE





GABARIT D'ASSEMBLAGE



SIMPLE ET RAPIDE

