

OMNIA HINGE

The italian
KNOW-HOW &
INGENUITY AT
ITS BEST!

Brings together all the best features you need in a hinge



AnyClick system

for quick and easy mounting in any position



ADVANTAGES AND BENEFITS

- SlowMotion rotation technology for smooth, rebound-free damping
- AnyClick mounting system for quick and easy assembly in any position
- 3-dimensional independent adjustment
- Increased side-coverage capability
- Complete range of reversible mounting plates
- Modern, linear and patented design

OMNIA HINGES

OMNIA HINGES



110D hinges

Door position	Closing mechanism	Screw-on		Dowels	
		Screw-on	Dowels	Screw-on	Dowels
Full overlay	Self-closing	OMN11000050	OMN11000058	OMN11000050	OMN11000058
	Soft-closing	OMN11000040	OMN11000048	OMN11000040	OMN11000048
Half overlay	Self-closing	OMN11000950	OMN11000958	OMN11000950	OMN11000958
	Soft-closing	OMN11000940	OMN11000948	OMN11000940	OMN11000948
Inset	Self-closing	OMN11001750	OMN11001758	OMN11001750	OMN11001758
	Soft-closing	OMN11001740	OMN11001748	OMN11001740	OMN11001748



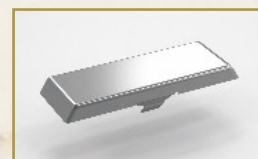
Hinges	Closing mechanism	Screw-on		Dowels	
45D	Soft-closing	OMN45000040	OMN45000048	OMN45000040	OMN45000048
90D	Soft-closing	OMN90000040	OMN90000048	OMN90000040	OMN90000048
155D	Self-closing	OMN15500050	OMN15500058	OMN15500050	OMN15500058
	Soft-closing	OMN15500040	OMN15500048	OMN15500040	OMN15500048
Corner	Self-closing	OMNBF000050	OMNBF000058	OMNBF000050	OMNBF000058

OPTIONAL ACCESSORIES



95D angle restrictor for OMNIA hinge

OMNANGLE
Bag of 100 units



OMNIA hinge metal arm cover cap Full overlay

OMNARM000



OMNIA hinge metal box cover cap

OMNCUP000

OMNIA HINGE MOUNTING PLATES

Standard



Cam adjustment



Linear



Height	Screw-on	Euro screw-on	Expando dowels
0 mm	OMNPL10000	OMNPL20000	OMNPL30000
2 mm	OMNPL10002	OMNPL20002	OMNPL30002
4 mm	OMNPL10004	OMNPL20004	OMNPL30004
0 mm	OMNPL1C000	OMNPL2C000	OMNPL3C000
2 mm	OMNPL1C002	OMNPL2C002	OMNPL3C002
4 mm	OMNPL1C004	OMNPL2C004	OMNPL3C004
0 mm	-	-	OMNPL300L0
2 mm	-	-	OMNPL300L2
4 mm	-	-	OMNPL300L4

Ideal combination with the slim double-wall metal drawer

TEN²

- Italian elegance and design
- Smooth and silent operation
- Several heights available
- White or storm grey finish

