



# Base pull-out system BPO II Short

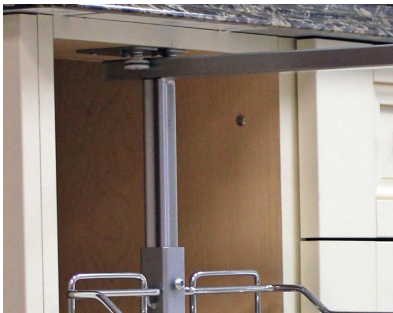


OUR BASE PULLOUT COMBINES STYLE,  
CONVENIENCE, AND VERSATILITY



## Advantages

- This shorter frame allows to install a drawer above the system.
- Slim, center-mounted frame offers easy access from left or right side.
- Create a custom storage solution to suit your needs in adding a choice of accessories.
- Runner provides a smooth soft-close
- 60 lb (27 kg) load rating
- Height adjustable frame from 20" to 28" (508 to 711mm)
- Offered in trendy silver gray finish.
- Bottom and top mounted to give more stability



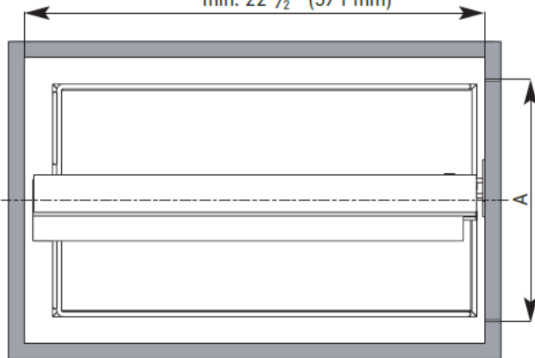
Silver Gray finish

Description	Silver Gray	Product Width	Product Depth	Product Height
Frame BPO II	2662100	3 3/4" (95mm)	22" (518mm)	20" to 28" (508 to 711mm)

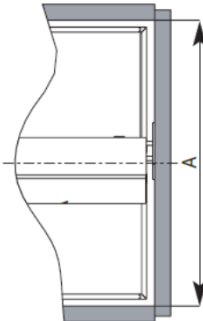
## Technical information

FRAMED CABINET

min. 22 1/2" (571 mm)



FRAMELESS CABINET

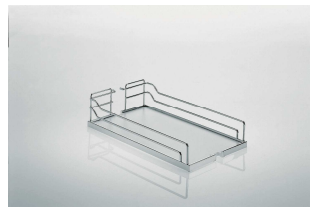


### Min. interior dimensions

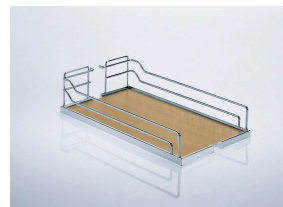
**Min. width** : depends of the basket or accessory selected

**Min. depth** : 22 1/2" (571mm)

**Min. height** : 24 to 32 (610mm to 813mm)



Gray/Chrome

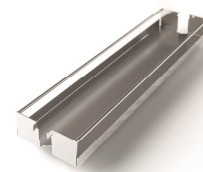


Maple/Chrome

Min. opening width (A)	Shelf dimension (W x D x H)	Gray/Chrome	Maple/Chrome
4 1/2" (114mm)	4" x 20 3/8" x 4 1/8" (102 x 518 x 105mm)	33140100	33140150
5 1/2" (140mm)	5" x 20 3/8" x 4 1/8" (102 x 518 x 105mm)	24140100	24140150
7 1/2" (191mm)	7" x 20 3/8" x 4 1/8" (102 x 518 x 105mm)	34140100	34140150
8 1/2" (216mm)	8" x 20 3/8" x 4 1/8" (102 x 518 x 105mm)	25140100	25140150
10 1/2" (267mm)	10" x 20 3/8" x 4 1/8" (102 x 518 x 105mm)	35140100	35140150
11 1/2" (292mm)	11" x 20 3/8" x 4 1/8" (102 x 518 x 105mm)	26140100	26140150
13 1/2" (343mm)	13" x 20 3/8" x 4 1/8" (102 x 518 x 105mm)	36140100	36140150
14 1/2" (368mm)	14" x 20 3/8" x 4 1/8" (102 x 518 x 105mm)	27140100	27140150
16 1/2" (419mm)	16" x 20 3/8" x 4 1/8" (102 x 518 x 105mm)	37140100	37140150
17 1/2" (445mm)	17" x 20 3/8" x 4 1/8" (102 x 518 x 105mm)	28140100	28140150
19 1/2" (495mm)	19" x 20 3/8" x 4 1/8" (102 x 518 x 105mm)	38140100	38140150
20 1/2" (521mm)	20" x 20 3/8" x 4 1/8" (102 x 518 x 105mm)	39140100	39140150
22 1/2" (572mm)	22" x 20 3/8" x 4 1/8" (102 x 518 x 105mm)	40140100	40140150

## Metal trays

Min. opening Width (A)	Product Width	Silver Gray
3 7/8" (98mm)	3 3/8" (86mm)	25474100
4 1/2" (112mm)	4" (102mm)	25475100
5 1/2" (140mm)	5" (127mm)	25476100
7 1/2" (191mm)	7" (178mm)	25477100



Silver Gray

## Accessories

Transform your BPO II into a functional storage system that will answer to your specific needs.

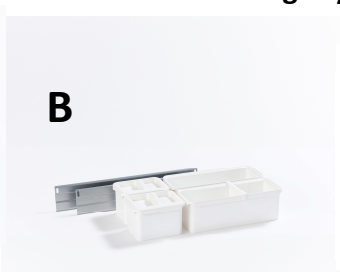


**A**

### Set Youbox 1

Includes :

- 2 x 1 liter boxes
- 1 x 2,1 liter box
- 2 x 2 liter boxes
- 1 x knife holder insert
- 2 x lids
- 2 traverse rails



**B**

### Set Youbox 2:

Includes :

- 2 x 1 liter boxes
- 2 x 2,1 liter boxes
- 2 x lids
- 1 x divider, large
- 2 x traverse rails

**C**

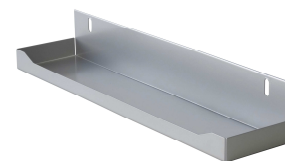


### Bakers tray

Includes :

- 2 x wire shelves
- 1 x metal shelf
- 25556-XX** : 4 plastic clips
- 25557-XX** : 6 plastic clips
- 25558-XX** : 8 plastic clips

**D**



### Spice tray

Ref.	Min. opening	Silver Gray	Description	Product dimensions W x D x H
A	10 1/2" (267mm) *	25464100	Set Youbox 1	4 1/2" x 17 1/4" x 3 3/4" (114mm x 438mm x 95mm)
B	10 1/2" (267mm) *	25465100	Set Youbox 2	4 1/2" x 17 1/4" x 3 3/4" (114mm x 438mm x 95mm)
C	3 7/8" (98mm)	25556100	Bakers tray 3 5/16"	3 3/8" x 20 3/8" x min. 8" (86mm x 518mm x min. 203mm)
C	5 1/2" (140mm)	25557100	Bakers tray 5"	5" x 20 3/8" x min. 8" (127mm x 518mm x min. 203mm)
C	7 1/2" (191mm)	25558100	Bakers tray 7"	7" x 20 3/8" x min. 8" (178mm x 518mm x mon. 203mm)
D	10 1/2" (267mm) **	25771100	Spice tray BPO II 4 3/8"	4 1/2" x 20 1/2" x 1 1/2" (114mm x 521mm x 38mm)

\* (A or B) The minimum opening is based on installing 1 set of rails on each side of the frame (Recommended)

\*\* (D) The min. opening is based for 2 spice trays, one on each side (Recommended)

## Mounting Accessories



The wide front fixing bracket is required for all cabinets that are wider than 15" (381mm). Optional for less than 15" (381mm). This will replace the original lower bracket only.

**B**



Can only be used for frame height of 24 1/8" (613mm) or more

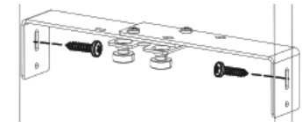
**C**



**D**



**E**



These optional lateral bar supports are used when the top center roller guide can't be mounted directly to the cabinet, most commonly in frameless cabinets.

Ref.	Description	Silver Gray	Product Width	Product Height
<b>A</b>	Wide door brackets	<b>2647100</b>	5 ½" (140mm)	1 ½" (38mm)
<b>B</b>	Additional hook	<b>4255100</b>		4" (102mm)
<b>C</b>	Lateral bar support	<b>2760452G</b>	4 ½" to 5" (114mm to 127mm)	
<b>D</b>	Lateral bar support	<b>2760752G</b>	7 ½" to 10 1/2" (191mm to 267mm)	
<b>E</b>	Lateral bar support	<b>2761352G</b>	13 ½" to 19 1/2" (343mm to 495mm)	